

SIGNAMARK®



Fiberglass Entry Door Systems

SELECT PROGRAM OFFERING





Pictures depicted in this brochure may have been graphically enhanced for illustration purposes.

Printer and monitor limitations prevent exact color duplication for finished products shown in this brochure.

Distinctive character is brought to life through the hand-staining expertise of our craftsmen. Unique stain variations are to be expected—these are treasured elements of the real-wood look.

Textured Glass is made up of bubbles, swirls, and lines which are part of the unique characteristic of this glass type. They will vary in shape, size, and location throughout the glass patterns which utilize it.

Cover: Metro™ Cross Reed 236 door in Smooth pre-painted Tricorn Black
This Page: 480 Lehigh® door in Cocoa Teak, 8'0" height
Back Cover: 460 9-Lite SDL door with 260 9-Lite SDL sidelites Cord in painted Smooth



1 800 235 5533
CONTACT OUR SALES TEAM FOR
SPECIFIC FINISHES AND OPTIONS

- 4 Why Signamark®?
- 5 Jamb Options
- 6 Finish Options
- 7 Pre-Painted Color Options
- 8 Glass Types & Privacy Rating Chart
- 10 ENERGY STAR® Information
- 10 Energy Ratings Chart
- 12 Beauty Shot Gallery

Collections:

- 13 St. Jane® (STJ)
 - 14 Sena™ (SEN)
 - 15 Stellar™ (SLR)
 - 16 Provence™ (PRV)
 - 17 Turquoise™ (TUR)
 - 18 Lehigh® (LEH)
 - 19 Cube™ (CUB)
 - 20 Palm Springs™ (PSP)
 - 21 Lone Star™ (LST)
 - 22 Solitaire™ (SOL)
 - 23 Classic (CLA)
 - 24 Iron Jane™ (IRJ)
 - 25 Portofino™ (PTF)
 - 26 Craftsman Collection
 - 27 Metro™
 - 28 Textured Obscure
 - 30 Simulated Divided Lites (SDL)
 - 32 Panel Doors
 - 33 Builder and Fire Doors
 - 34 Impact Rated
 - 36 Clear Low-E (CLR)
 - 36 Internal Grille Low-E (GBG)
 - 36 Molded SDL Grilles (CGS)
 - 37 Internal Mini Blinds Low-E (MBL)
 - 37 Impact Internal Mini Blinds Low-E (MBL)
 - 37 Vent Lites Low-E (VNT)
 - 38 8'0" Height
-
- 40 Rough Opening, Swing, Handing
 - 42 Warranty Information
 - 43 Finishing Instructions

signamark.com

WHY SIGNAMARK®?

Our standard product features are usually found as upgrade options with other doors.

Curb Appeal

- High definition panel embossments
- Matching glass coming, sill, and hinge finish
- True resemblance of a real wood door

Security

- 16" wood lockblock & jamb security plate
- Laminated veneer lumber (LVL) door stiles
- Molded open panel design for glass inserts
- Safety tempered glass

Durability

- Composite on all 6 sides of door slab – no exposed wood[#]
- Fiberglass door panels won't dent, rust, rot, or crack
- PVC jambs will not rot or absorb moisture (no Sill Key™ System needed)
- Sill Key™ System (on wood jambs) doesn't allow jamb bottom to sit on sub floor or sill where it is susceptible to water damage^{**}
- Ball bearing hinge prevents door sag and hinge wear
- Composite bottom rail with door sweep & composite adjustable threshold

Energy Efficiency

- Injected polyurethane foam core
 - Up to 5 times more energy efficient than wood
 - 100% CFC free (environmentally friendly)
 - Superior density
- Triple pane decorative glass
 - Secured by our high performance lite frame
- Foam compression weatherstrip helps seal out drafts



Signamark® proudly offers ENERGY STAR certified door models in all 50 states.



Palm Springs™ 445 in Cherry Mahogany, white PVC jamb

INDUSTRY LEADING WARRANTY

Door: Limited Lifetime Warranty
Stain Finish: 5-Year Warranty
Paint Finish: 5-Year Warranty
Glass: 10-Year Warranty



LIMITED WARRANTY



FINISH WARRANTY



GLASS WARRANTY

SIGNAMARK® JAMB OPTIONS

White Woodgrain PVC Jamb System (Standard)

UNFINISHED
Ready to paint



Primed Finger-Jointed Wood Jamb* (Option)

UNFINISHED
Ready to paint

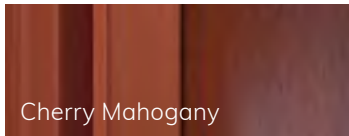


Sill Key™ System
(wood jambs)

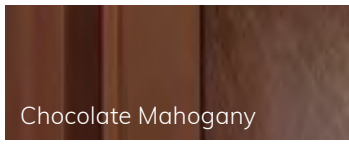
Pre-Colored Woodgrain PVC Jamb System (Upgrade Option)

Available option on Woodgrain Fiberglass.
Note: Designed to complement the overall door finish; color will not match hand stained finishes perfectly.

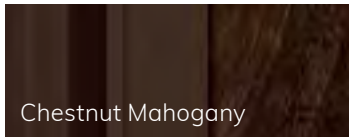
Mahogany Pre-Colored



Cherry Mahogany

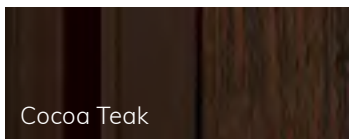


Chocolate Mahogany



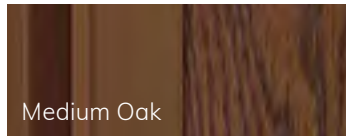
Chestnut Mahogany

Teak Pre-Colored

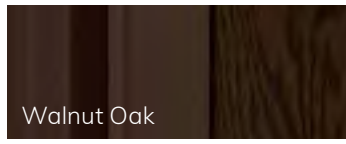


Cocoa Teak

Oak Pre-Colored



Medium Oak

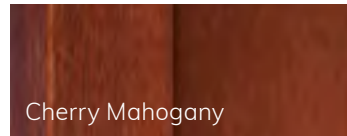


Walnut Oak

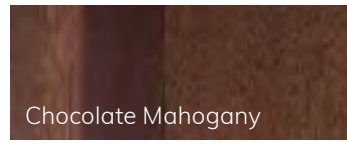
Hand Stained Woodgrain PVC Jamb System (Upgrade Option)

This is a hand stained woodgrain PVC jamb option that offers full non rot protection and is hand stained to best complement our hand stained door finishes.

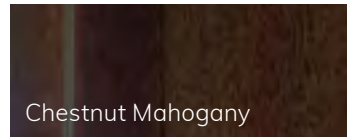
Woodgrain Mahogany Finishes



Cherry Mahogany

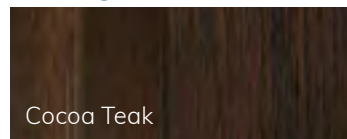


Chocolate Mahogany



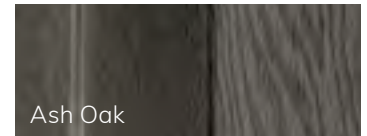
Chestnut Mahogany

Woodgrain Teak Finish



Cocoa Teak

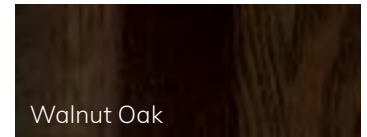
Woodgrain Oak Finishes



Ash Oak



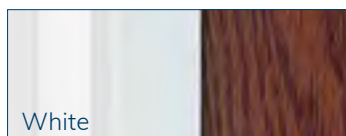
Medium Oak



Walnut Oak

Pre-Colored White PVC Jamb System

Available on both woodgrain and smooth fiberglass



White

Note: A close up of the door system—jamb on the left and door panel on the right—shown in the images above.

* Comes standard with the Sill Key™ System.

Call your
Sales Representative
for finish availabilities
in your market.

TEAK WOODGRAIN FINISHES

Unfinished Teak also available

Hand
Stained

Cocoa

Painted

Painted White

Painted

Painted White

Hand
Stained

Chocolate

Hand
Stained

Cherry

Hand
Stained

Chestnut

MAHOGANY WOODGRAIN FINISHES

Unfinished Mahogany also available

OAK WOODGRAIN FINISHES

Hand
Stained

Ash

Hand
Stained

Medium

Hand
Stained

Walnut

Unfinished Oak
ready to stain
or paint

In these days of repetitive architecture, there are fewer ways of making your home stand out from the neighbors. Customizing your home without a major investment is a big challenge. The perfect solution is a hand stained Teak, Mahogany, or Oak woodgrain front entry door glazed with handcrafted glass. Your home will immediately make a statement your friends are sure to notice. Our hand finishing process creates a custom looking door. The grain pattern of the door and lite frame provide a realistic wood appearance without the maintenance. Enhance your home for many years with a long lasting and durable fiberglass entry door.

Printer and monitor limitations prevent exact color duplication for finished products shown in this brochure.

Unfinished Smooth
ready to paint

SMOOTH FINISH

Ready to paint
or Pre-painted

PRE-PAINTED COLOR OPTIONS

Smooth finish only



Sena™ 420 door with 160 sidelites in Smooth pre-painted Tricorn Black

Pre-painted Pure White

Pre-painted Tricorn Black

INDUSTRY LEADING
WARRANTY



FINISH WARRANTY

Pre-painted available for Smooth finish only

- Durable paint finish
- Two-color option available
- Touch up bottle included with all special orders
- 5-Year Finish Warranty
- Jamb options available
 - Unfinished white woodgrain PVC
 - Pre-colored white PVC jamb
 - Custom painted PVC jambs
4-9/16", 5-1/4", and 6-9/16" widths

GLASS TYPES

Decorative Collections are comprised of combinations of the glass types shown here. These unique finished designs are held in place by decorative camings and hand-pieced together by our team of artisans and craftsmen. Traditional techniques of creating art glass produce textures, swirls, and air bubbles that add individual character to the glass. These purposeful and unique qualities are integral to the expressive nature of the art glass.

Textured Obscure Collection*: Cord, Cross Reed, Hammered, Privacy, Reeded, Rain Fall™, and Sandstone™ are available in full glass panel options. See pages 28-29, Metro™ and SDL Collections.



Glue Chip



Clear Texture



Gray Texture



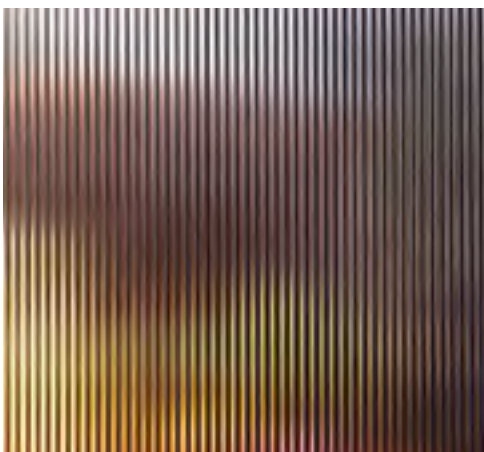
Double Ripple Wave



Ripple Wave



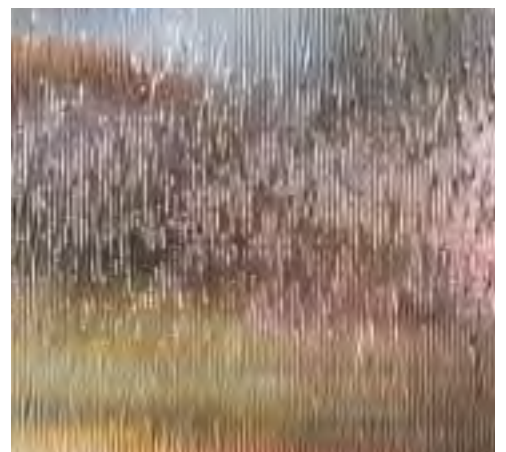
Rose Ripple Wave



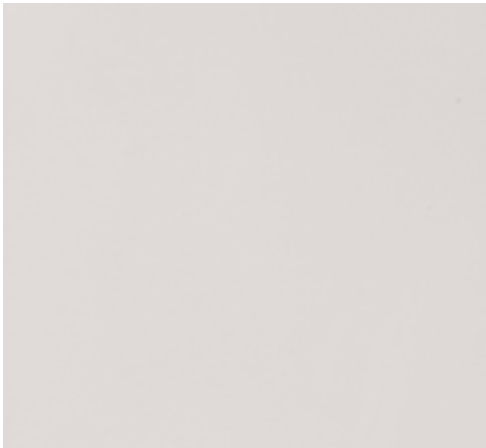
Fluted



Reeded*



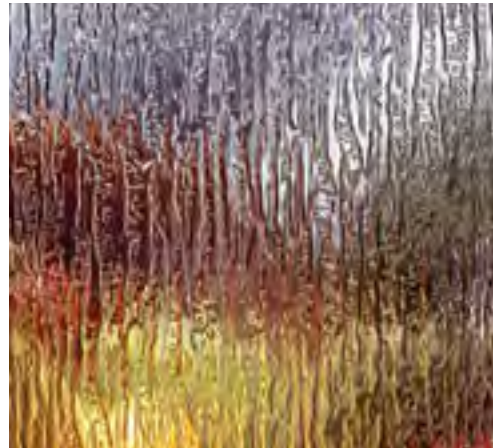
Cord*



Privacy*



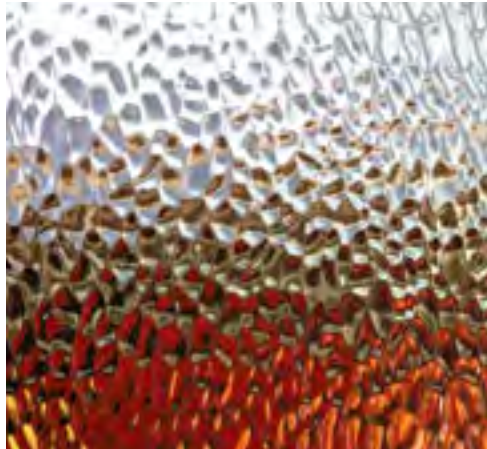
Cross Reed*



Rain Fall™*



Hammered*



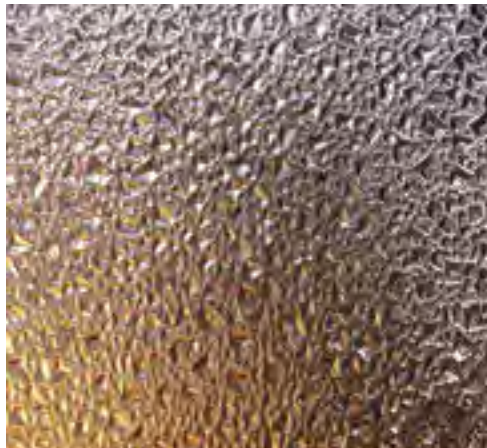
Pebble



Chinchilla



Granite



Double Granite



Sandstone™*



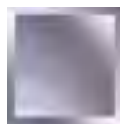
Amber Streak Opaque



Patina Caming



Zinc Caming



Clear Bevel



Glue Chip Bevel



Jewel

Privacy Rating Chart (PR)



1
Less
Private

10
More
Private

Our glass collections are assigned a privacy rating based on the overall obscurity of the glass types used.

ENERGY STAR



Signamark® offers ENERGY STAR certified door models in all 50 states.

All Signamark® Fiberglass Doors are energy efficient and designed to stand up to all seasons, so your home stays warm during the winter months and cool during the summer. Imagine the savings from a fiberglass door which is up to five times more energy efficient than a traditional wood door.

Most of our doors are ENERGY STAR certified. The chart beginning below and continuing on page 11 shows a listing of the U-Factor and SHGC (Solar Heat Gain Coefficient) for all of our Entry Door Products. Certified units must hit the U-Factor, Solar Heat Gain Coefficient in their climate zone, and air leakage listed in the chart to the right.

Visit energystar.gov for your area's climate zone detail.

Glazing Level	U-Factor ¹	SHGC ²	
Opaque	≤0.17	No Rating	
≤1/2 Lite	≤0.25	≤0.25	
>1/2 Lite	≤0.30	Northern North-Central	≤0.40
		Southern South-Central	≤0.25

Effective: 1/1/2015

Air Leakage for Swinging Doors ≤ 0.5 cfm/ft²
 1 Btu/h.ft².°F 2 Fraction of incident solar radiation.

U-Factor: The heat transfer per time per area and per degree of temperature difference. The U-factor multiplied by the interior-exterior temperature difference and by the projected fenestration product area yields the total heat transfer through the fenestration product due to conduction, convection, and long wave infrared radiation. Expressed here in units of Btu/h.ft².°F.

Solar Heat Gain Coefficient (SHGC): The ratio of the solar heat gain entering the space through the fenestration product to the incident solar radiation. Expressed as a value between 0 and 1.

Air Leakage (AL): Measures the rate at which air passes through joints in the window. AL is measured in cubic feet of air passing through one square foot of window area per minute. The lower the AL value, the less air leakage. Most industry standards and building codes require an AL of 0.3 cf-m/ft².

ENERGY RATINGS INFORMATION – PVC JAMBS

In some years the government has offered a federal tax credit for energy efficient products that meet or exceed ENERGY STAR performance levels for doors. Please visit irs.gov and energystar.gov for additional information regarding tax credit availability or visit signamark.com for additional information regarding energy efficiency. PVC jamb ratings are shown in the Energy Ratings Chart below.

NFRC Size Designation	Signamark Door Description
1/4 Lite ≤ 410 sq in	150, 206, 208, 232, 236, 243, 248, 300, 310, 325, 400, 408, 420, 425
1/2 Lite ≤ 900 sq in	243, 430, 525, 529, 550, 555
3/4 Lite ≤ 1100 sq in	440, 445
Full Lite > 1100 sq in	360, 460, 480
Opaque/No Glass	All Panel Doors

NFRC Size Designation	Signamark Sidelite Description
1/4 Lite ≤ 65 sq in	206
1/2 Lite ≤ 281 sq in	145, 225, 230
3/4 Lite ≤ 391 sq in	160, 240, 243, 245, 248
Full Lite > 391 sq in	260, 265, 280
Opaque/No Glass	N/A

ENERGY RATINGS CHART

✗ Will not qualify under ENERGY STAR guidelines.

Note: Transoms do not qualify for the tax credit. Any tax credit, if available, would be based on "qualified" Door with Sidelites or Double Door configuration.
 Note: Ratings shown here are with PVC Jamb. Wood jamb ratings can be found in the "Performance Data" section on signamark.com.

Teak Woodgrain Style Fiberglass Entry Doors & Sidelites

TYPE	SWING	GLAZING	1/4 Lite ≤ 410 sq in		1/2 Lite ≤ 900 sq in		3/4 Lite ≤ 1100 sq in		Full Lite > 1100 sq in	
			U-factor	SHGC	U-factor	SHGC	U-factor	SHGC	U-factor	SHGC
Fiberglass Door	Inswing & Outswing	Triple Pane—Decorative Glass	0.23	0.12	0.25	0.11	N/A	N/A	N/A	N/A
		Triple Pane—Obscure (5mm) Glass	0.23	0.12	0.25	0.11	N/A	N/A	N/A	N/A
		Triple Pane—Obscure (5mm) Glass with Grid	N/A	N/A	0.25	0.09	N/A	N/A	N/A	N/A
		Dual Pane—Low E-270 (Clear)	0.22	0.07	0.23	0.07	N/A	N/A	N/A	N/A
		Dual Pane—Low E-270 (Internal Grille)	N/A	N/A	0.23	0.05	N/A	N/A	N/A	N/A
TYPE	SWING	GLAZING	1/4 Lite ≤ 65 sq in		1/2 Lite ≤ 281 sq in		3/4 Lite ≤ 381 sq in		Full Lite > 381 sq in	
Fiberglass Sidelite	Inswing & Outswing	Triple Pane—Decorative Glass	N/A	N/A	N/A	N/A	N/A	N/A	0.29	0.17
		Triple Pane—Obscure (5mm) Glass	N/A	N/A	N/A	N/A	N/A	N/A	0.29	0.17
		Dual Pane—Low E-270 (Clear)	N/A	N/A	N/A	N/A	N/A	N/A	0.27	0.10

Air Leakage ≤ 0.3 cfm/ft²

Mahogany Woodgrain Style Fiberglass Entry Doors & Sidelites

TYPE	SWING	GLAZING	1/4 Lite ≤ 410 sq in		1/2 Lite ≤ 900 sq in		3/4 Lite ≤ 1100 sq in		Full Lite > 1100 sq in	
			U-factor	SHGC	U-factor	SHGC	U-factor	SHGC	U-factor	SHGC
Fiberglass Door	Inswing & Outswing	Triple Pane—Decorative Glass	0.20	0.08	0.23	0.13	N/A	N/A	0.25	0.18
		Triple Pane—Obscure (5mm) Glass	0.20	0.08	0.23	0.13	N/A	N/A	0.25	0.18
		Dual Pane—Craftsman 6-Lite (Mahogany/Smooth)	0.22	0.10	N/A	N/A	N/A	N/A	N/A	N/A
		Dual Pane—Craftsman 3-Lite, 1-Lite Low E-270	0.20	0.05	N/A	N/A	N/A	N/A	N/A	N/A
		Dual Pane—Low E Wrought Iron	0.20	0.07	0.20	0.07	N/A	N/A	N/A	N/A
		Dual Pane—(Clear/Internal Grille/Wrought Iron)	0.22	0.10	0.26	0.17	N/A	N/A	0.29	0.23
		Triple Pane—Laminated Impact Glass	0.20	0.08	0.23	0.13	N/A	N/A	0.25	0.17
		Opaque/No Glass (Flush/Embossed)	U-Factor = 0.15		SHGC = 0.01					
TYPE	SWING	GLAZING	1/4 Lite ≤ 65 sq in		1/2 Lite ≤ 281 sq in		3/4 Lite ≤ 391 sq in		Full Lite > 391 sq in	
Fiberglass Sidelite	Inswing & Outswing	Triple Pane—Decorative Glass	N/A	N/A	0.20	0.05	0.24	0.10	0.26	0.13
		Triple Pane—Obscure (5mm) Glass	N/A	N/A	0.20	0.05	0.24	0.09	0.26	0.12
		Dual Pane—(Obscure/Clear/Internal Grille/Wrought Iron)	N/A	N/A	0.21	0.05	0.25	0.11	0.28	0.14
		Dual Pane—Low E Wrought Iron	N/A	N/A	0.16	0.03	0.18	0.06	0.19	0.07
		Dual Pane—Low E-270 (Clear/Internal Grille/SDL)	N/A	N/A	0.20	0.03	N/A	N/A	0.26	0.07
		Triple Pane—Laminated Impact Glass	N/A	N/A	0.20	0.04	0.24	0.09	0.26	0.12
		Dual Pane—Low E (Mini Blind UP)	N/A	N/A	N/A	N/A	0.26	0.07	0.29	0.09
Air Leakage ≤ 0.3 cfm/ft ²										

Oak Woodgrain and Smooth Style Fiberglass Entry Doors & Sidelites

TYPE	SWING	GLAZING	1/4 Lite ≤ 410 sq in		1/2 Lite ≤ 900 sq in		3/4 Lite ≤ 1100 sq in		Full Lite > 1100 sq in	
			U-factor	SHGC	U-factor	SHGC	U-factor	SHGC	U-factor	SHGC
Fiberglass Door	Inswing & Outswing	Triple Pane—Decorative Glass	0.20	0.07	0.23	0.13	0.25	0.18	0.28	0.24
		Triple Pane—Obscure (5mm) Glass	0.20	0.07	0.23	0.13	0.25	0.18	0.29	0.24
		Dual Pane—Low E Wrought Iron	0.19	0.06	0.22	0.11	0.24	0.15	0.27	0.20
		Dual Pane—Low E-270 (Clear/Internal Grille)	0.19	0.05	0.21	0.08	0.22	0.11	0.25	0.15
		Dual Pane—Low E (Mini Blind UP)	N/A	N/A	0.23	0.08	0.25	0.10	0.28	0.13
				Opaque/No Glass (Flush/Embossed)	U-Factor = 0.16		SHGC = 0.01			
TYPE	SWING	GLAZING	1/4 Lite ≤ 65 sq in		1/2 Lite ≤ 281 sq in		3/4 Lite ≤ 381 sq in		Full Lite > 381 sq in	
Fiberglass Sidelite	Inswing & Outswing	Triple Pane—Decorative Glass	0.17	0.03	0.21	0.07	0.22	0.10	0.24	0.13
		Triple Pane—Obscure (5mm) Glass	0.17	0.03	0.21	0.07	0.22	0.09	0.24	0.12
		Dual Pane—Low E Wrought Iron	0.14	0.02	0.16	0.04	0.17	0.05	0.18	0.07
		Dual Pane—Low E-270 (Clear/Internal Grille)	0.17	0.01	0.20	0.04	0.21	0.06	0.22	0.07
		Dual Pane—Low E (Mini Blind UP)	N/A	N/A	0.21	0.03	0.23	0.04	0.25	0.05
		Dual Pane—(Mini Blind UP)	N/A	N/A	0.22	0.06	0.24	0.08	0.27	0.10
Air Leakage ≤ 0.3 cfm/ft ²										

Flush-glazed Teak Woodgrain, Oak Woodgrain, and Smooth Style Fiberglass Entry Doors & Sidelites

TYPE	SWING	GLAZING	1/4 Lite ≤ 410 sq in		1/2 Lite ≤ 900 sq in		3/4 Lite ≤ 1100 sq in		Full Lite > 1100 sq in	
			U-factor	SHGC	U-factor	SHGC	U-factor	SHGC	U-factor	SHGC
Fiberglass Door	Inswing & Outswing	Triple Pane—Laminated Impact Glass	0.20	0.07	0.23	0.13	0.26	0.17	0.29	0.23
		Triple Pane—Decorative Glass	0.20	0.07	0.23	0.13	0.25	0.18	0.28	0.24
		Triple Pane—Obscure (5mm) Glass	0.20	0.07	0.23	0.13	0.26	0.17	0.29	0.23
		Triple Pane—Laminated Low E Impact Glass	0.19	0.06	0.22	0.10	0.24	0.14	0.27	0.18
		Dual Pane—Laminated Low E Impact Glass	0.19	0.07	0.22	0.13	0.24	0.17	0.26	0.23
		Dual Pane—Low E Wrought Iron	0.20	0.07	0.23	0.13	0.24	0.17	0.27	0.23
		Dual Pane—Low E-270 (Clear/Internal Grille)	0.19	0.05	0.22	0.08	0.24	0.11	0.26	0.15
		Dual Pane—Low E (Mini Blind UP)	N/A	N/A	0.26 ✘	0.10 ✘	0.29	0.14	0.32 ✘	0.18 ✘
		Dual Pane—Low E (Mini Blind DOWN)	N/A	N/A	0.23	0.06	0.25	0.07	0.28	0.09
		Dual Pane—Laminated Low E Impact (Mini Blind UP)	N/A	N/A	0.25	0.09	0.27	0.13	0.31 ✘	0.17 ✘
Dual Pane—Laminated Low E Impact (Mini Blind DOWN)	N/A	N/A	0.23	0.05	0.25	0.06	0.28	0.09		
TYPE	SWING	GLAZING	1/4 Lite ≤ 65 sq in		1/2 Lite ≤ 281 sq in		3/4 Lite ≤ 391 sq in		Full Lite > 391 sq in	
Fiberglass Sidelite	Inswing & Outswing	Triple Pane—Laminated Impact Glass	N/A	N/A	0.22	0.10	0.24	0.13	0.27	0.18
		Triple Pane—Decorative Glass	N/A	N/A	0.22	0.10	0.24	0.14	0.27	0.19
		Triple Pane—Obscure (5mm) Glass	N/A	N/A	0.22	0.10	0.24	0.14	0.27	0.19
		Triple Pane—Laminated Low E Impact Glass	N/A	N/A	0.17	0.05	0.18	0.07	0.19	0.09
		Dual Pane—Laminated Impact Glass	N/A	N/A	0.23	0.10	0.25	0.13	0.28	0.18
		Dual Pane—Laminated Low E Impact Glass	N/A	N/A	0.17	0.05	0.18	0.07	0.19	0.09
		Dual Pane—Low E Wrought Iron	N/A	N/A	0.17	0.05	0.18	0.07	0.19	0.09
		Dual Pane—Low E-270 (Clear/Internal Grille)	N/A	N/A	0.22	0.06	0.24	0.07	0.26	0.09
		Dual Pane—Low E (Mini Blind UP)	N/A	N/A	0.19	0.03	0.21	0.04	0.24	0.05
		Dual Pane—Low E (Mini Blind DOWN)	N/A	N/A	0.17	0.02	0.18	0.03	0.19	0.04
		Dual Pane—Laminated Low E Impact (Mini Blind UP)	N/A	N/A	0.19	0.03	0.20	0.04	0.23	0.05
		Dual Pane—Laminated Low E Impact (Mini Blind DOWN)	N/A	N/A	0.17	0.02	0.18	0.03	0.19	0.04
Air Leakage ≤ 0.3 cfm/ft ²										

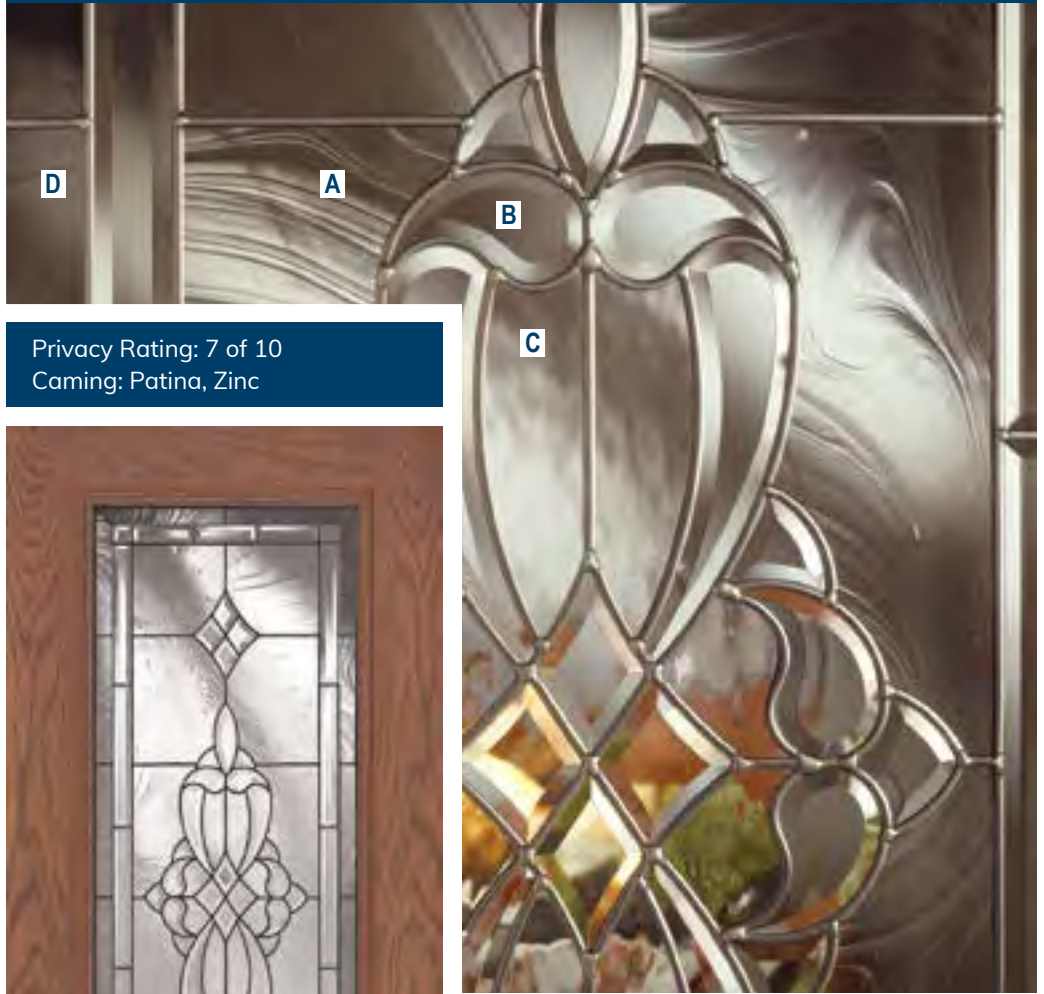


ST. JANE®

Glass Code = STJ **A** Clear Texture **B** Clear Bevel **C** Ripple Wave **D** Gray Texture



STJ550 Mahogany




Privacy Rating: 7 of 10
Caming: Patina, Zinc



STJ430 Smooth



STJ460 Oak

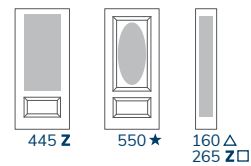
 Impact rated options available on page 35

NOTES

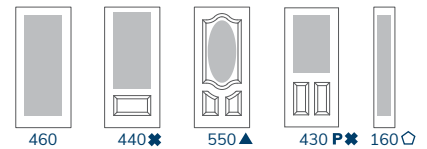
Unless otherwise noted:
 - All doors available in 36"
 - All sidelites available in 12" and 14"
 ▲ 34" also □ 14" only
 ✱ 32" also △ 10" & 12" only
 ★ 32" & 34" also ◊ 10" also
 Z Zinc only
 P Patina only

6'8" height doors and sidelites

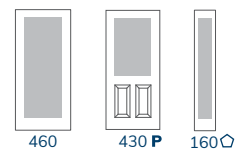
MAHOGANY



OAK



SMOOTH



All doors and sidelites in the 6'8" St. Jane® Collection are ENERGY STAR certified for all 50 states

SENA™

Glass Code = SEN

A Double Ripple Wave **B** Rose Ripple Wave **C** Amber Streak Opaque

Privacy Rating: 8 of 10
Caming: Patina



SEN525 Teak



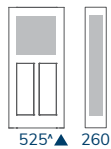
SEN529 Mahogany



SEN420 Smooth

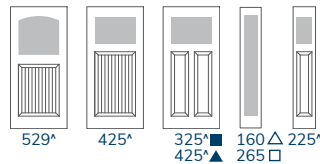


TEAK



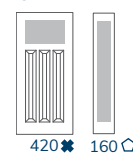
525▲ 260

MAHOGANY



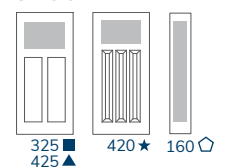
529▲ 425▲ 325■ 425▲ 160△ 225* 265□

OAK



420✱ 160◊

SMOOTH



325■ 420★ 160◊ 425▲

NOTES

Unless otherwise noted:
– All doors available in 36"
– All sidelites available in 12" and 14"

- 30" & 32" only □ 14" only
- ▲ 34" also △ 10" & 12" only
- ✱ 32" also ◊ 10" also
- ★ 32" & 34" also



▲ Screwed-on dentil shelf option



All doors and sidelites in the 6'8" Sena™ Collection are ENERGY STAR certified for all 50 states

6'8" height doors and sidelites

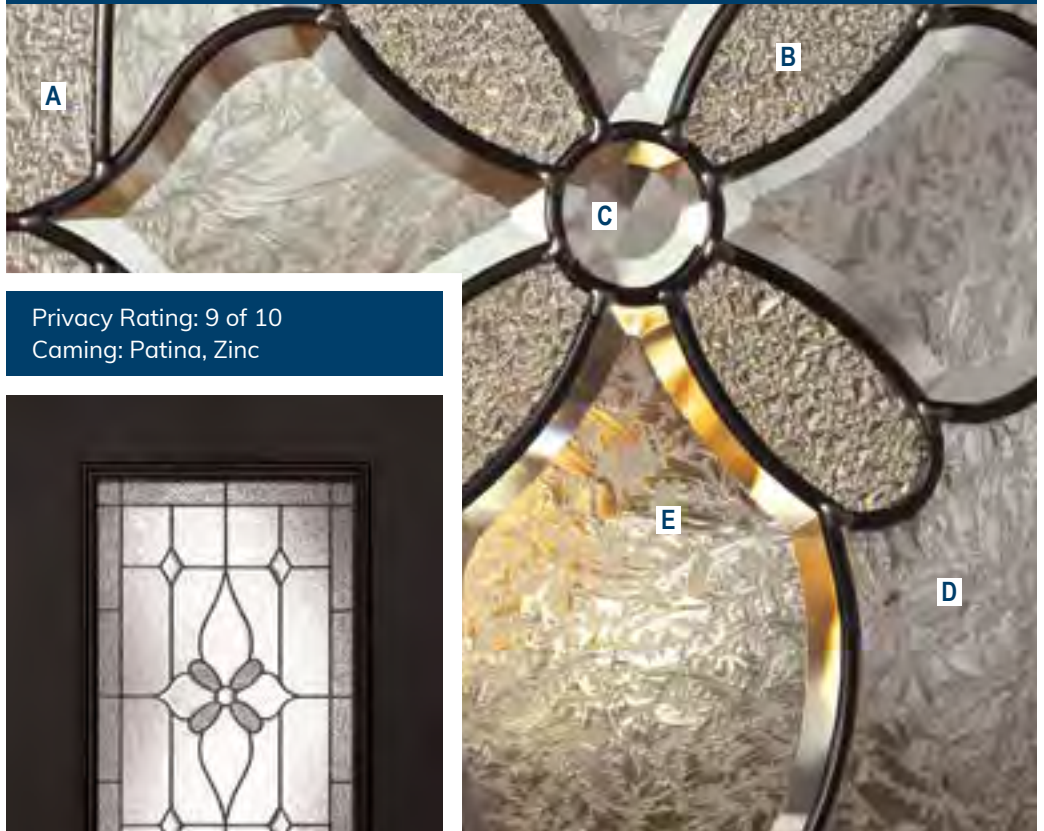
PROVENCE™

Glass Code = PRV

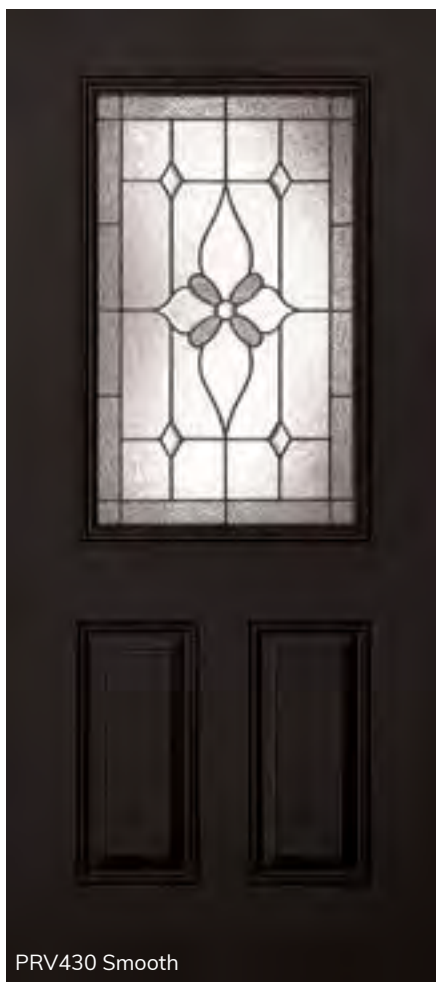
A Granite **B** Double Granite **C** Jewel
D Glue Chip **E** Glue Chip Bevel



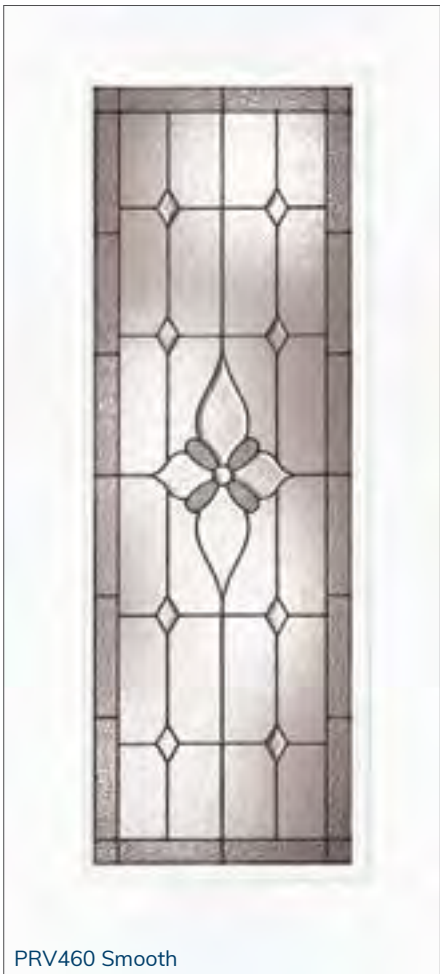
PRV550 Mahogany



Privacy Rating: 9 of 10
 Caming: Patina, Zinc

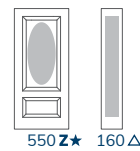


PRV430 Smooth

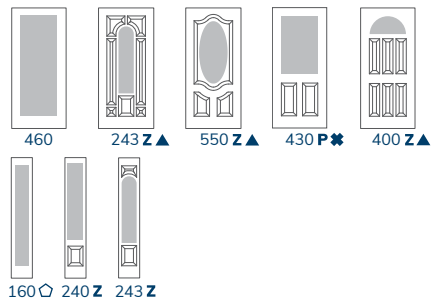


PRV460 Smooth

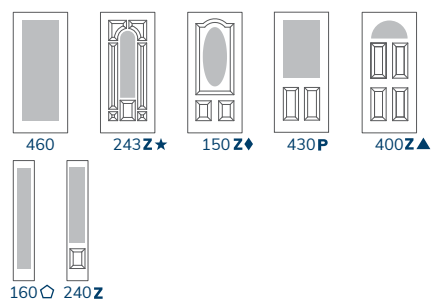
MAHOGANY



OAK



SMOOTH



NOTES

- Unless otherwise noted:
- All doors available in 36"
- All sidelites available in 12" and 14"
- ▲ 34" also Δ 10" & 12" only **Z** Zinc only
- ★ 32" also ◊ 10" also **P** Patina only
- ★ 32" & 34" also
- ◆ 30", 32" & 34" also

6'8" height doors and sidelites



All doors and sidelites in the 6'8" Provence™ Collection are ENERGY STAR certified for all 50 states

TURQUOISE™

Glass Code = TUR

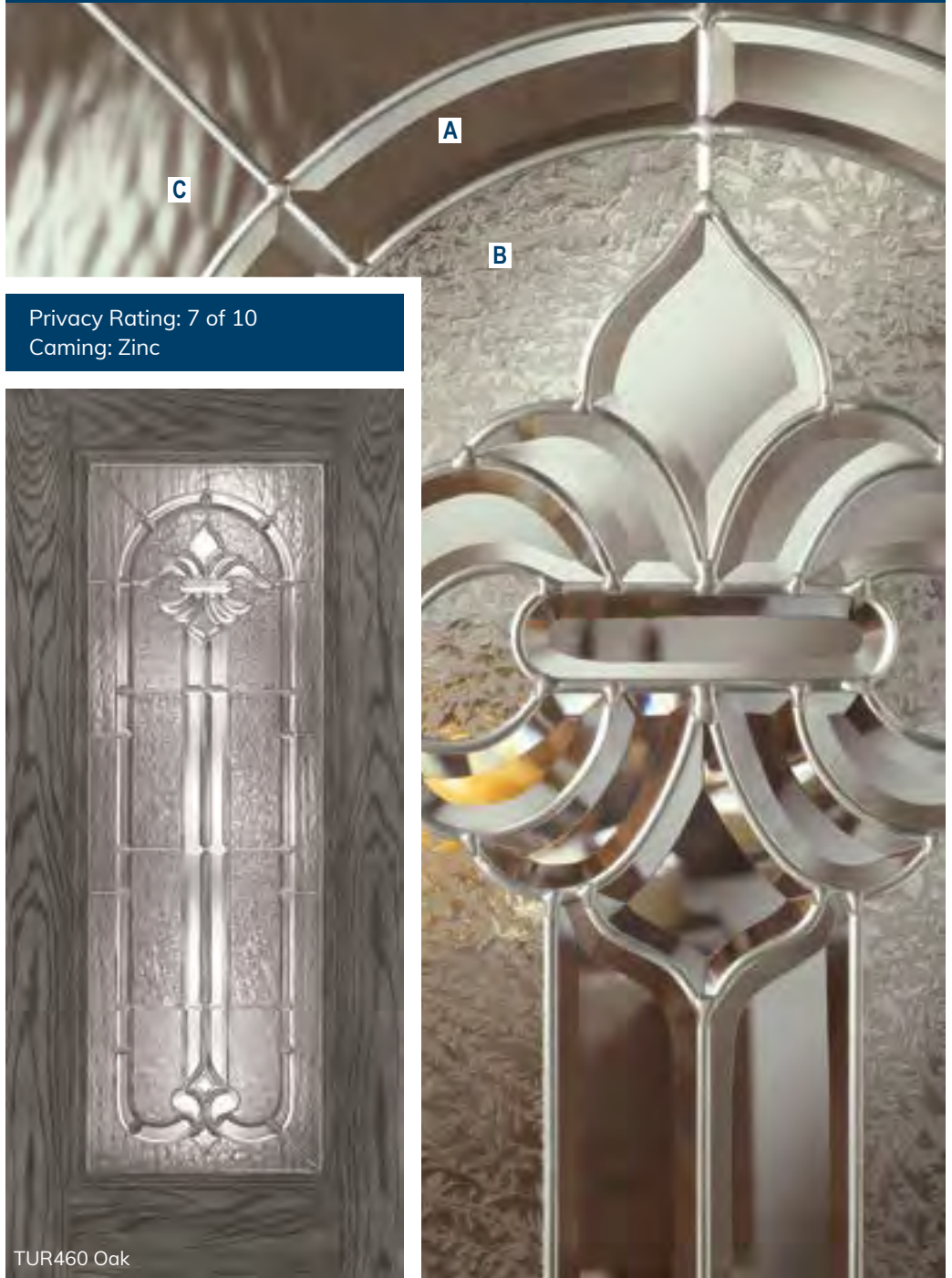
A Clear Bevel

B Glue Chip

C Ripple Wave



TUR243 Smooth



Privacy Rating: 7 of 10
Caming: Zinc



TUR460 Oak



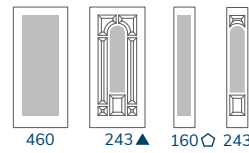
TUR460 Smooth

NOTES

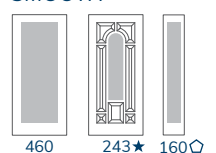
- Unless otherwise noted:
 - All doors available in 36"
 - All sidelites available in 12" and 14"
 ▲ 34" also ◊ 10" also
 ★ 32" & 34" also

6'8" height doors and sidelites

OAK



SMOOTH



All doors and sidelites in the 6'8" Turquoise™ Collection are ENERGY STAR certified for all 50 states



Impact rated options available on page 35

LEHIGH[®]

Glass Code = LEH

A Clear Bevel

B Double Granite

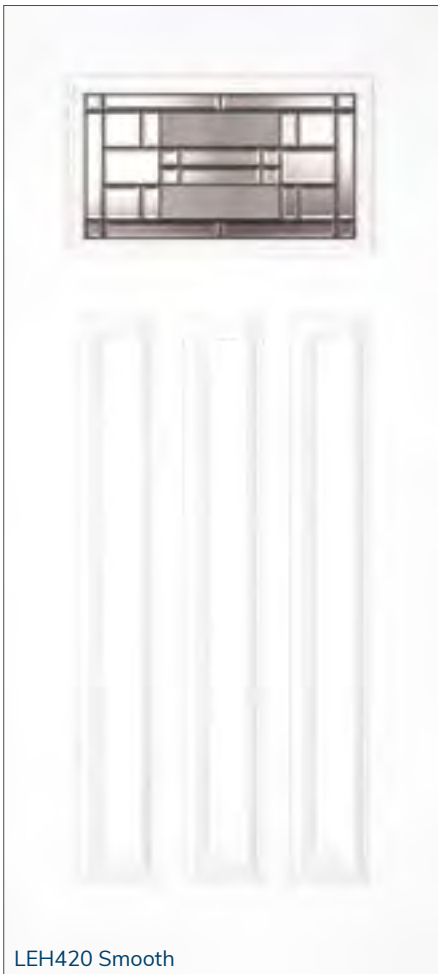
C Fluted



Privacy Rating: 6 of 10
Caming: Patina, Zinc



LEH425 Mahogany



LEH420 Smooth



LEH430 Oak



Lehigh[®] 445 door with 245 sidelites in Chestnut Mahogany

NOTES

- Unless otherwise noted:
 - All doors available in 36"
 - All sidelites available in 12" and 14"
- | | |
|------------------|------------------|
| ■ 30" & 32" only | □ 14" only |
| ▲ 34" also | △ 10" & 12" only |
| ✱ 32" also | ◇ 10" also |
| ★ 32" & 34" also | P Patina only |

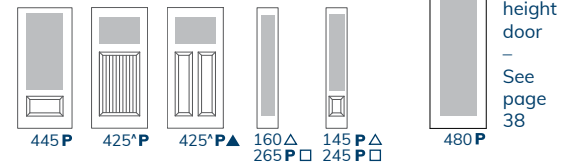
6'8" height doors and sidelites



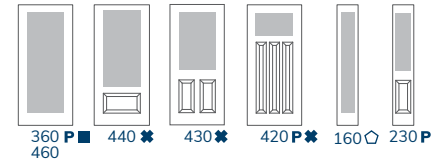
All doors and sidelites in the 6'8" Lehigh[®] Collection are ENERGY STAR certified for all 50 states

TEAK / OAK / SMOOTH

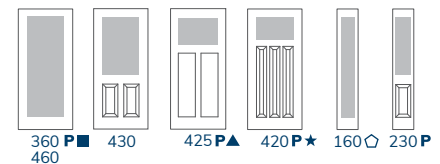
MAHOGANY



OAK



SMOOTH



▲ Screwed-on dentil shelf option

Impact rated options available on page 35

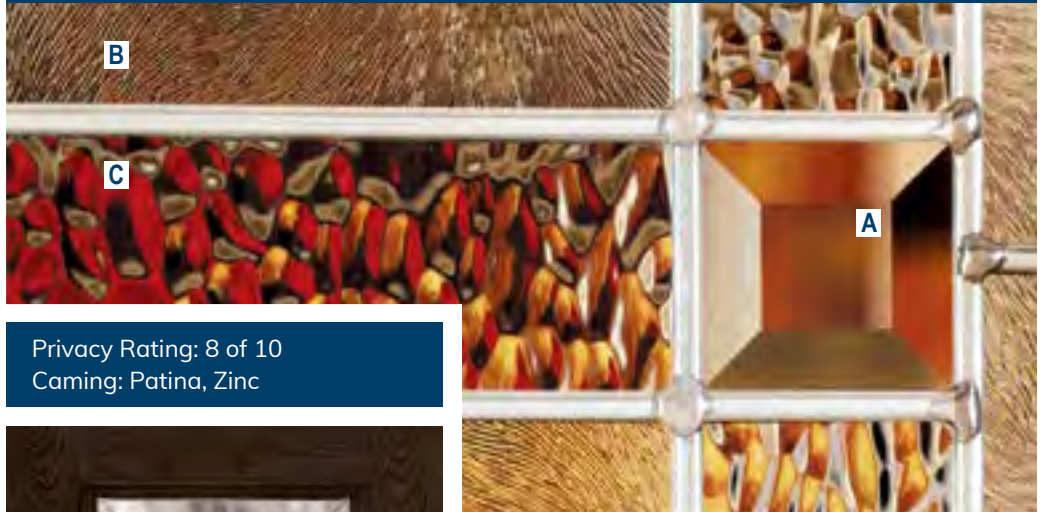
CUBE™

Glass Code = CUB

A Clear Bevel

B Chinchilla

C Pebble



Privacy Rating: 8 of 10
Caming: Patina, Zinc



CUB550 Mahogany

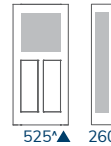


CUB440 Oak



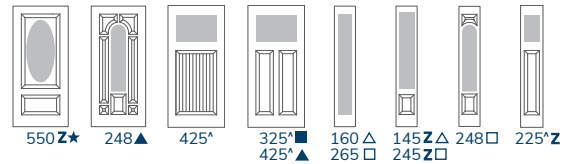
CUB420 Smooth

TEAK



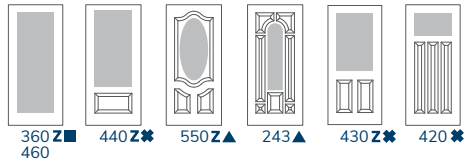
525[▲] 260

MAHOGANY

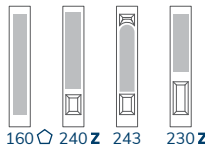


550[★] 248[▲] 425[▲] 325[■] 160[△] 145^Z 248[□] 225^Z
425[▲] 265[□] 245^Z□

OAK

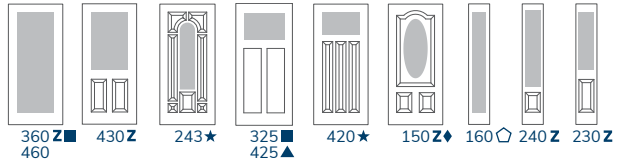


360^Z 440[★] 550[▲] 243[▲] 430[★] 420[★]
460



160[□] 240^Z 243 230^Z

SMOOTH



360^Z 430^Z 243[★] 325[■] 420[★] 150^Z 160[□] 240^Z 230^Z
460 425[▲]

Transom options also available – contact our sales team for specific information

NOTES

- Unless otherwise noted:
- All doors available in 36"
- All sidelites available in 12" and 14"
- 30" & 32" only □ 14" only
- ▲ 34" also △ 10" & 12" only
- ★ 32" also ☆ 10" also
- ★ 32" & 34" also Z Zinc only
- † 30", 32" & 34" also

6'8" height doors and sidelites

Impact rated options available on page 35

▲ Screwed-on dentil shelf option

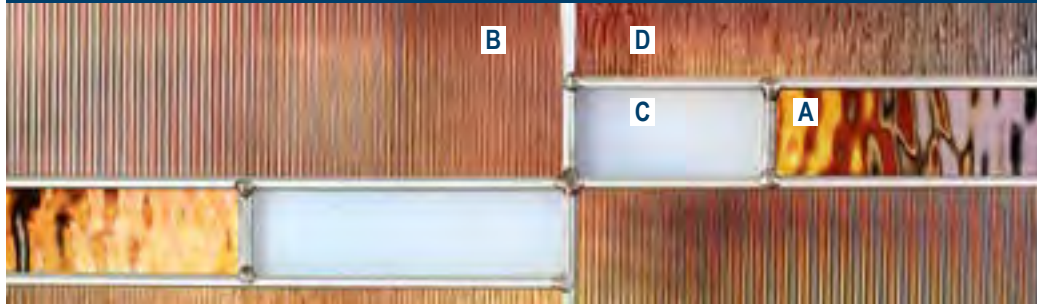


All doors and sidelites in the 6'8" Cube™ Collection are ENERGY STAR certified for all 50 states

PALM SPRINGS™

Glass Code = PSP

A Ripple Wave **B** Fluted **C** Privacy **D** Cord



Privacy Rating: 8 of 10
Caming: Zinc



PSP445 Mahogany



PSP460 Oak



PSP430 Smooth

MAHOGANY



445

OAK



460



440*



430*

SMOOTH



460



430

NOTES

Unless otherwise noted:
– All doors available in 36"
* 32" also

6'8" height doors and sidelites

As viewed from outside,
left-handed inswing doors



All doors and sidelites in the 6'8" Palm Springs™ Collection are ENERGY STAR™ certified for all 50 states



Palm Springs™ 460 doors in Smooth pre-painted Pure White

LONE STAR™

Glass Code = LST

A Clear Bevel

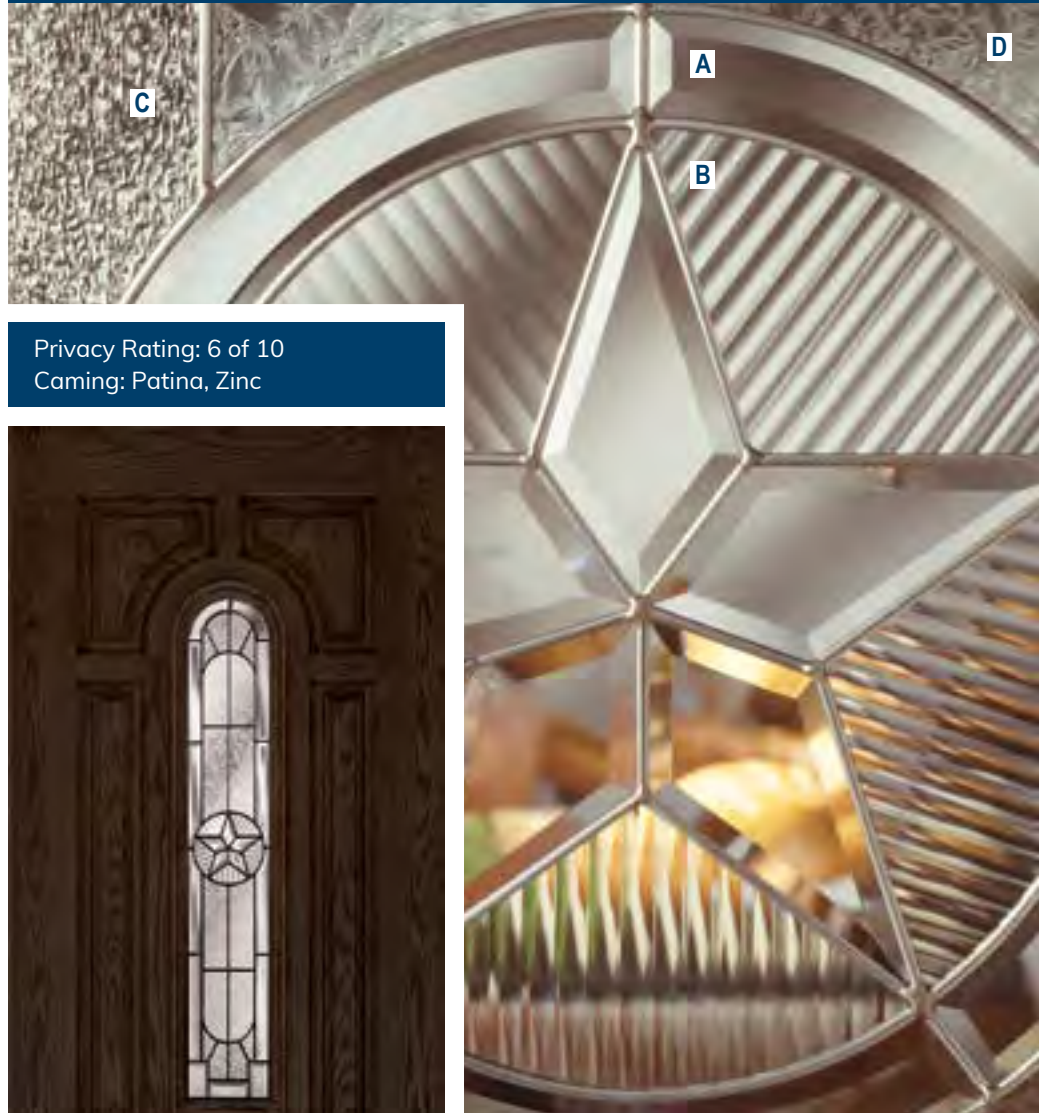
B Reeded

C Granite

D Glue Chip



LST445 Mahogany



Privacy Rating: 6 of 10
Caming: Patina, Zinc



LST150 Smooth



LST243 Oak

NOTES

Unless otherwise noted:

- All doors available in 36"

- All sidelites available in 12" and 14"

▲ 34" also ◊ 10" also P Patina only

★ 32" & 34" also △ 10" & 12" only Z Zinc only

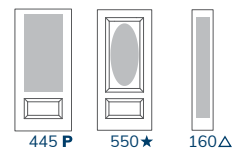
◆ 30", 32" & 34" also

6'8" height doors and sidelites

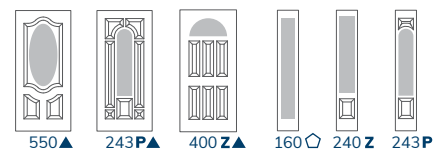


All doors and sidelites in the 6'8" Lone Star™ Collection are ENERGY STAR™ certified for all 50 states

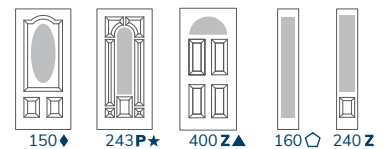
MAHOGANY



OAK



SMOOTH



SOLITAIRE™

Glass Code = SOL

A Clear Bevel

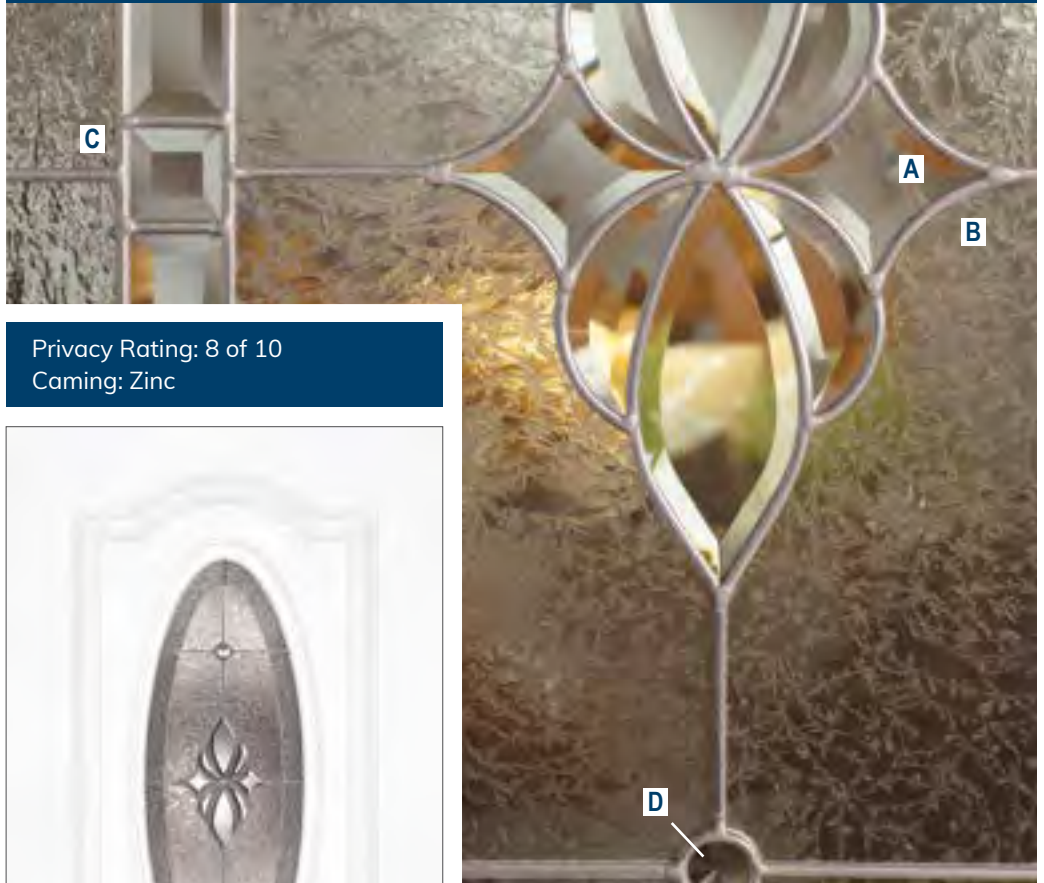
B Glue Chip

C Granite

D Jewel



SOL460 Oak



Privacy Rating: 8 of 10
Caming: Zinc



SOL150 Smooth



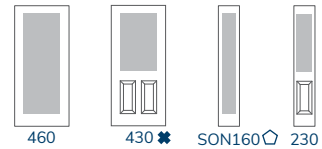
SOL430 Smooth

NOTES

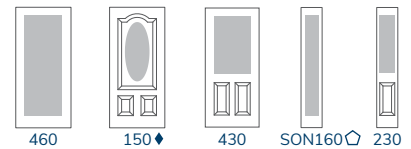
- Unless otherwise noted:
- All doors available in 36"
- All sidelites available in 12" and 14"
- ✱ 32" also ◊ 10" also
- ◆ 30", 32" & 34" also

6'8" height doors and sidelites

OAK



SMOOTH



All doors and sidelites in the 6'8" Solitaire™ Collection are ENERGY STAR certified for all 50 states

CLASSIC

Glass Code = CLA

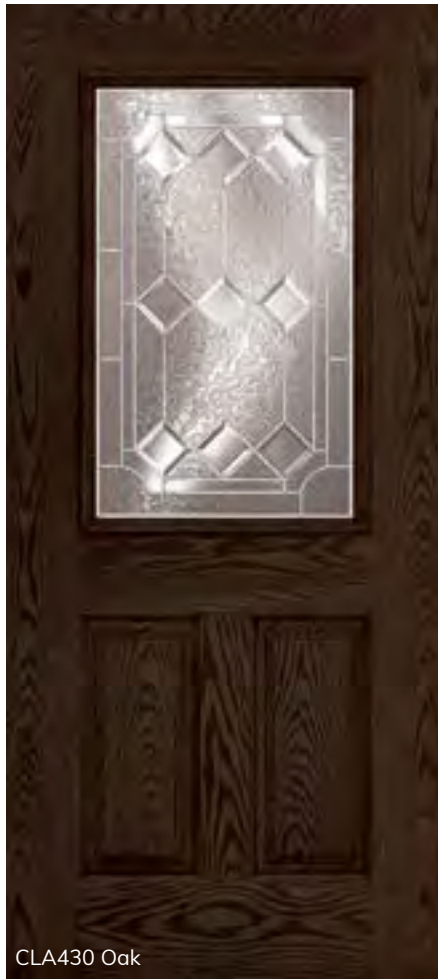
A Clear Bevel **B** Glue Chip
 CLA400 is all Glue Chip Bevel glass



CLA400 Oak



Privacy Rating: 7 of 10
 Caming: Zinc



CLA430 Oak



Classic™ 460 door with 160 sidelites
 in Smooth pre-painted Tricorn Black



CLA460 Smooth

NOTES

Unless otherwise noted:
 - All doors available in 36"
 - All sidelites available in 12" and 14"

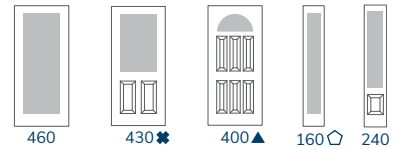
- ✦ 32" also ◊10" also
- ▲ 34" also
- ◆ 30", 32" & 34" also

6'8" height doors and sidelites



All doors and sidelites in the
 6'8" Classic Collection are
 ENERGY STAR certified for all 50 states

OAK



SMOOTH



IRON JANE™

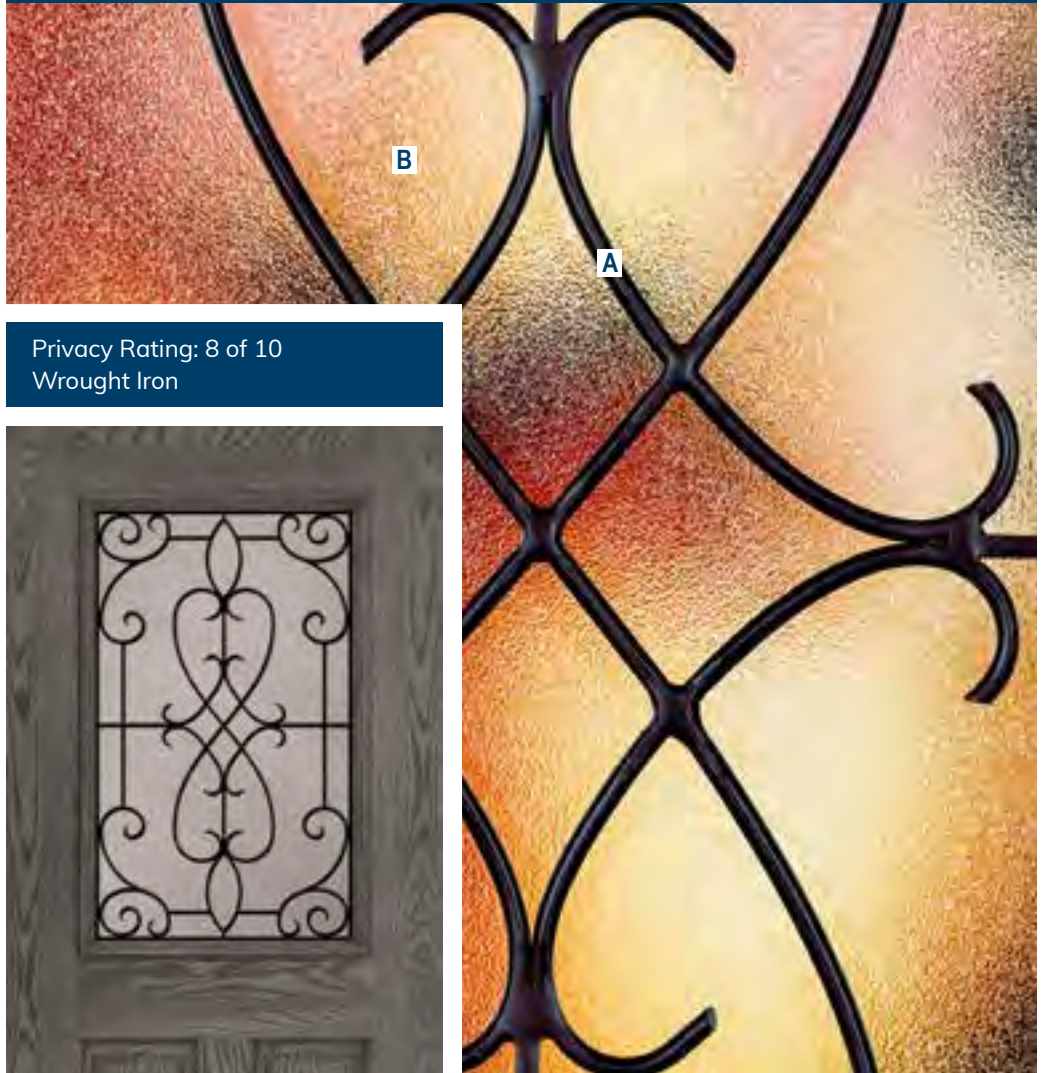
Glass Code = IRJ

A Wrought Iron

B Sandstone™



IRJ445 Mahogany



Privacy Rating: 8 of 10
Wrought Iron



IRJ430 Oak



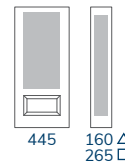
IRJ460 Smooth

NOTES

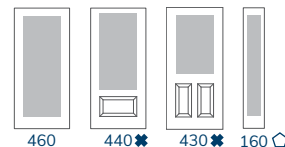
- Unless otherwise noted:
 - All doors available in 36"
 - All sidelites available in 12" and 14"
 * 32" also □ 14" only
 △ 10" & 12" only
 ◇ 10" also

6'8" height doors and sidelites

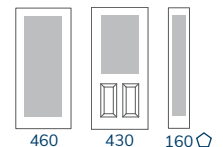
MAHOGANY



OAK



SMOOTH



All doors and sidelites in the 6'8" Iron Jane™ Collection are ENERGY STAR certified for all 50 states



Impact rated options available on page 35

PORTOFINO™

Glass Code = PTF

A Wrought Iron

B Hammered



PTF445 Mahogany



Privacy Rating: 8 of 10
Wrought Iron



PTF245
Mahogany



PTF160
Oak



PTF160
Smooth

MAHOGANY



445



160



245

OAK



160

SMOOTH



160

NOTES

- Unless otherwise noted:
- All doors available in 36"
- All sidelites available in 12" and 14"
- 14" only
- △ 10" & 12" only
- ◇ 10" also

6'8" height doors and sidelites



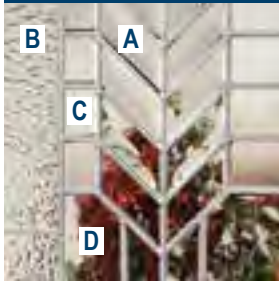
All doors and sidelites in the 6'8" Portofino™ Collection are ENERGY STAR certified for all 50 states

CRAFTSMAN COLLECTION

CAMERON™

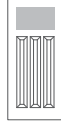
Glass Code = CMR
Privacy Rating: 5 of 10
Caming: Zinc

- A** Clear Bevel
- B** Granite
- C** Fluted
- D** Seedy



CMR420 Oak

OAK



420✳

SMOOTH

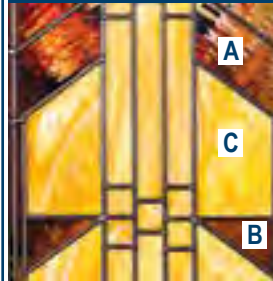


420★

SENA™

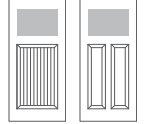
Glass Code = SEN
Privacy Rating: 8 of 10
Caming: Patina

- A** Double Ripple Wave
- B** Rose Ripple Wave
- C** Amber Streak Opaque



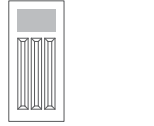
SEN425 Mahogany

MAHOGANY



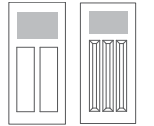
425▲ 325■ 425▲

OAK



420✳

SMOOTH

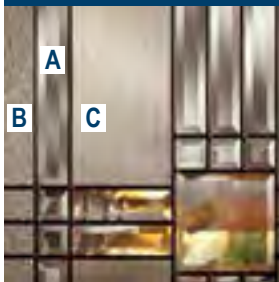


325■ 420★ 425▲

LEHIGH®

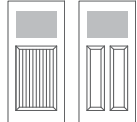
Glass Code = LEH
Privacy Rating: 6 of 10
Caming: Patina

- A** Clear Bevel
- B** Double Granite
- C** Fluted



LEH425 Smooth

MAHOGANY



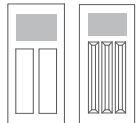
425▲ 425▲

OAK



420✳

SMOOTH

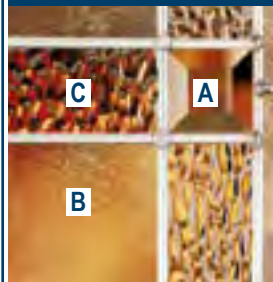


425▲ 420★

CUBE™

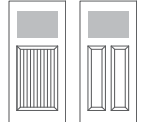
Glass Code = CUB
Privacy Rating: 8 of 10
Caming: Patina, Zinc

- A** Clear Bevel
- B** Chinchilla
- C** Pebble



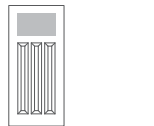
CUB425 Mahogany

MAHOGANY



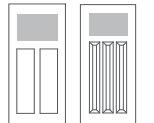
425▲ 325■ 425▲

OAK



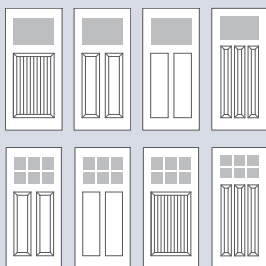
420✳

SMOOTH

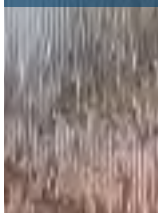


325■ 420★ 425▲

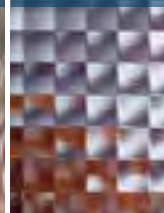
Additional Options Available
Contact our sales team
for specific information



CORD



CROSS REED



HAMMERED



PRIVACY



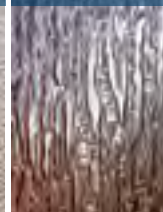
REEDED



SANDSTONE™



RAIN FALL™



CLEAR LOW-E



Impact rated options
available on page 35



▲ Screwed-on dentil shelf option

NOTES

Unless otherwise noted:

- All doors available in 36"

▲ 34" also

✳ 32" also

★ 32" & 34" also

■ 30" & 32" only

6'8" height doors and sidelites



All doors in the Craftsman
Collection are ENERGY STAR
certified for all 50 states

CORD
Glass Code = COR
Privacy Rating: 8 of 10



Modern contemporary flat lite frames



CROSS REED
Glass Code = CRE
Privacy Rating: 8 of 10

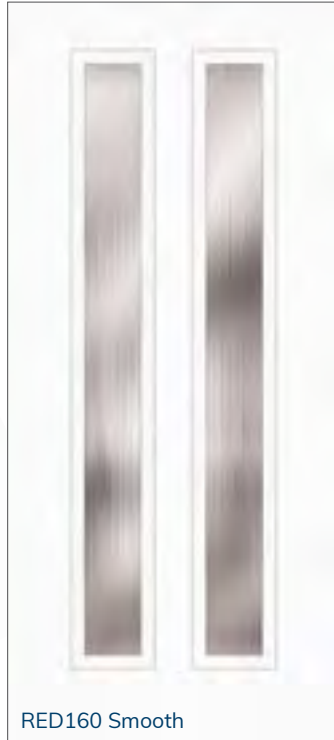
HAMMERED
Glass Code = HAM
Privacy Rating: 8 of 10

PRIVACY
Glass Code = PVY
Privacy Rating: 9 of 10

REDED
Glass Code = RED
Privacy Rating: 7 of 10

SANDSTONE™
Glass Code = SDS
Privacy Rating: 8 of 10

RAIN FALL™
Glass Code = RAI
Privacy Rating: 8 of 10



RED160 Smooth



RAI206 Smooth



HAM206/230 Smooth

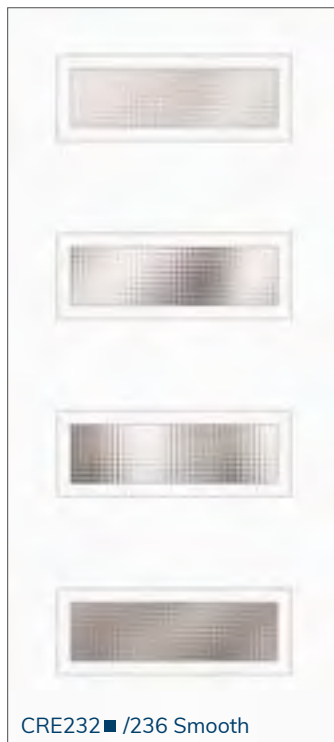
- Countless door cutout options available based on variety of frame shapes shown here – contact our sales team for specific information
- Not all glass options available for all door shapes – contact our sales team for specific information

NOTES

Unless otherwise noted:
– All doors available in 36"
■ 30" & 32" only

6'8" height doors and sidelites

See page 28 for glass detail images



CRE232 ■ /236 Smooth



SDS310 Smooth



COR420 Smooth



All doors and sidelites in the 6'8" Metro™ Collection are ENERGY STAR certified for all 50 states

TEXTURED OBSCURE COLLECTION

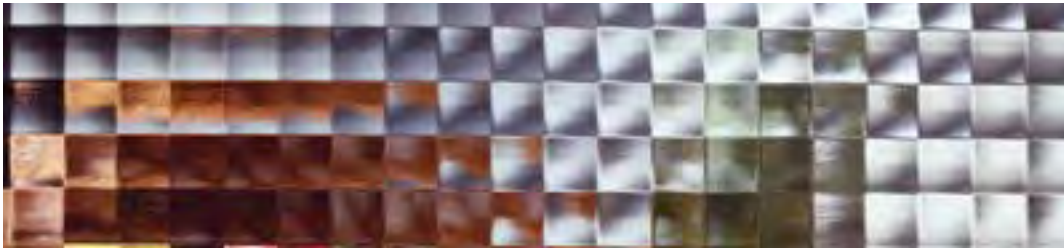
CORD

Glass Code = COR
Privacy Rating: 8 of 10
Triple Pane



CROSS REED

Glass Code = CRE
Privacy Rating: 8 of 10
Triple Pane



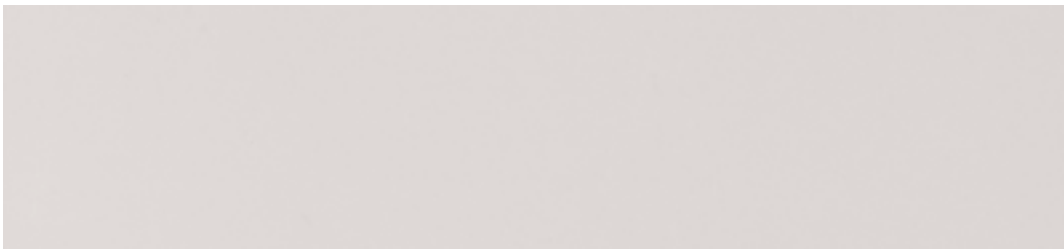
HAMMERED

Glass Code = HAM
Privacy Rating: 8 of 10
Triple Pane



PRIVACY

Glass Code = PVY
Privacy Rating: 9 of 10
Triple Pane



REEDED

Glass Code = RED
Privacy Rating: 7 of 10
Triple Pane



SANDSTONE™

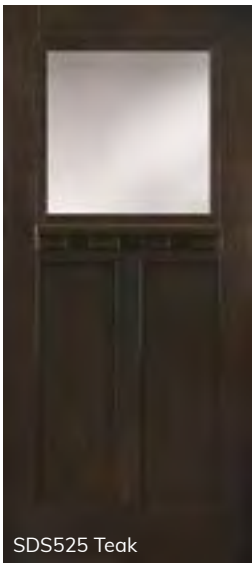
Glass Code = SDS
Privacy Rating: 8 of 10
Triple Pane



RAIN FALL™

Glass Code = RAI
Privacy Rating: 8 of 10
Triple Pane





SDS525 Teak



COR525 4-Lite Teak



RAI420 Oak



COR425 Mahogany



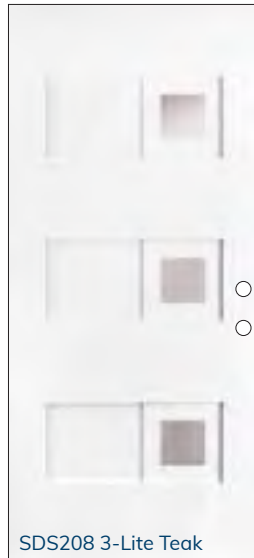
PVY445 Mahogany



HAM408 3-Lite Teak



COR208 3-Lite Teak



SDS208 3-Lite Teak

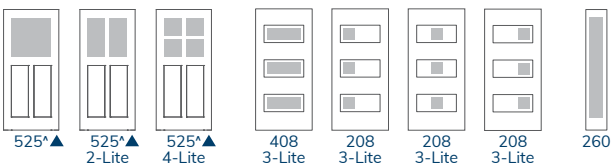


PVY208 3-Lite Teak

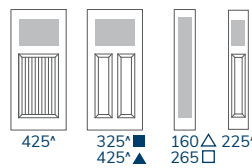


CRE460 Smooth

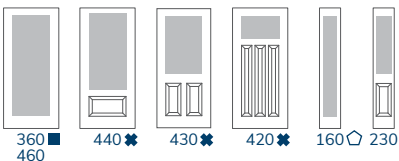
TEAK



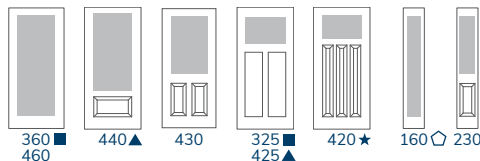
MAHOGANY



OAK



SMOOTH



NOTES

- Unless otherwise noted:
- All doors available in 36"
- All sidelites available in 12" and 14"
- 30" & 32" only □ 14" only
- ▲ 34" also △ 10" & 12" only
- ✱ 32" also ◇ 10" also
- ★ 32" & 34" also

6'8" height doors and sidelites



▲ Screwed-on dentil shelf option



Impact rated options available on page 35

Metro™ smooth doors also available with textured obscure glass on page 27

Flush Glaze options with and without Simulated Divided Lites (SDLs) on pages 30-31

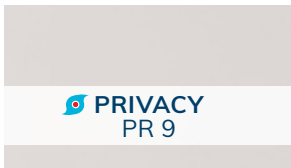
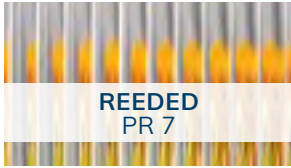
Transom options also available – contact our sales team for specific information

Not all glass options available for all door shapes – contact our sales team for specific information



All doors and sidelites in the 6'8" Textured Obscure Collection are ENERGY STAR certified for all 50 states

SIMULATED DIVIDED LITES (SDLs)



Not all glass options available for all door shapes

SDL FEATURES

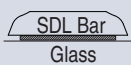


1-1/8"
(1.125")

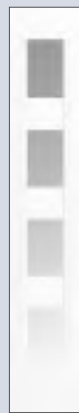


2-1/4"
(2.25")

Bar profile for
above widths



3-1/2"
(3.5")



5-5/8"
(5.625")

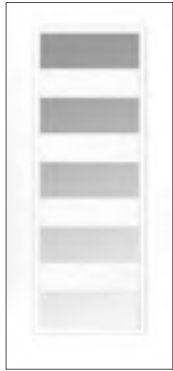
Bar profile for
above widths



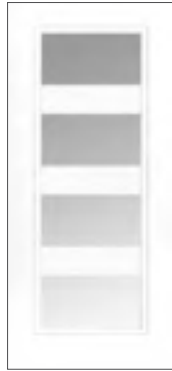
- SDL bars are applied to both exterior and interior of glass
- SDL bars are non-removable
- SDL bar finish color and texture matches door
- All door and glass shown are also available without SDL bars
- Triple pane obscure glass
- Transoms available for Privacy and Clear Low-E glass
- Impact options available, see page 35

Contact our sales team at 1 800 235 5533 for specific finishes and options
 - Examples below -

6'8" SMOOTH FLUSH GLAZE



360 ■
460
5-Lite



360 ■
460
4-Lite

FULL LITE
Grille Options:
2-1/4"
3-1/2"
5-5/8" (shown)



260
5-Lite



260
4-Lite

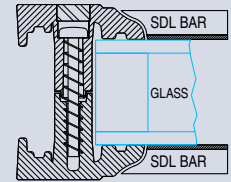


260
3-Lite

FULL LITE
Grille Options:
1-1/8"
2-1/4"
3-1/2" (shown)
5-5/8"

**FRAME PROFILE
(Cross Section)**

**Smooth
Flush Glaze**



8'0" TEAK WOODGRAIN FLUSH GLAZE

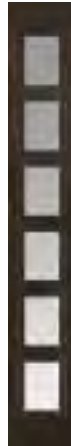


480
6-Lite



480
5-Lite

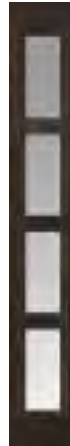
FULL LITE
Grille Options:
2-1/4"
3-1/2"
5-5/8" (shown)



280
6-Lite



280
5-Lite

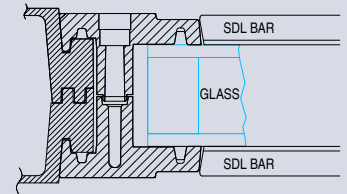


280
4-Lite

FULL LITE
Grille Options:
2-1/4"
3-1/2" (shown)
5-5/8"

**FRAME PROFILE
(Cross Section)**


**Teak
Flush Glaze**




NOTES

- Unless otherwise noted:
- All doors available in 36"
- All sidelites available in 12" and 14"
- 30" & 32" only

6'8" height Smooth doors and sidelites
8'0" height Teak doors and sidelites

 Impact rated options
available on page 35

 All doors and sidelites in the
SDL Collection are ENERGY STAR
certified for all 50 states

PANEL DOORS



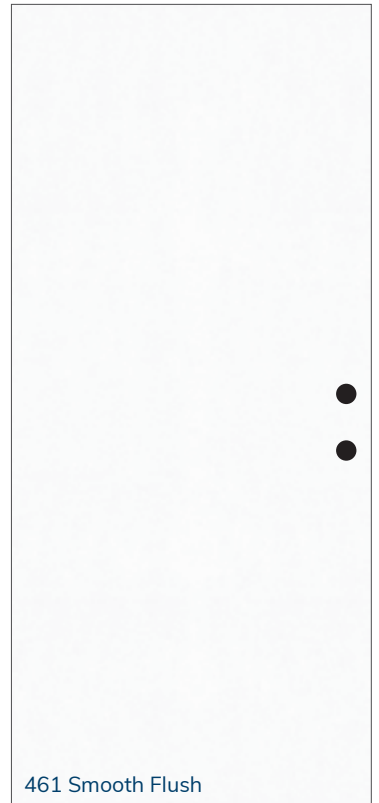
917 Mahogany



600 Oak



620 Oak



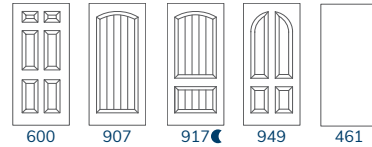
461 Smooth Flush



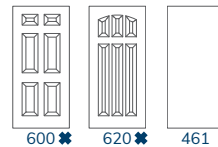
917 door with Portofino™ 160 sidelite in Chestnut Mahogany

Pair panel doors with any applicable sidelite

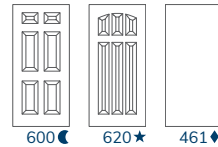
MAHOGANY



OAK



SMOOTH



Clavos options for 907 & 917



TEAK



NOTES

- Unless otherwise noted:
 - All doors available in 36"
 - ✱ 32" also
 - ★ 32" & 34" also
 - ☾ 30" & 32" also
 - ◆ 30", 32" & 34" widths also



HVHZ Impact rated options available on page 35

6'8" height doors and sidelites

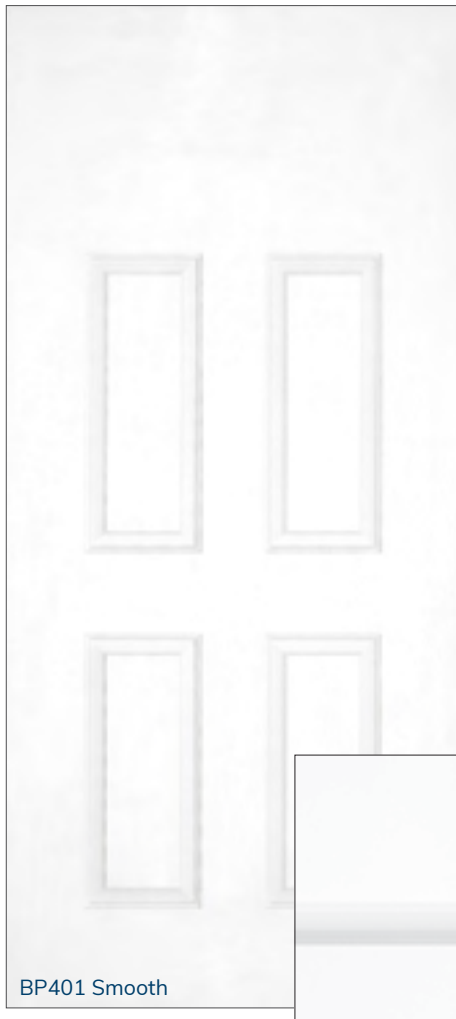


All doors and sidelites in the 6'8" Panel Collection are ENERGY STAR certified for all 50 states

BUILDER DOORS



BP601 Oak



BP401 Smooth

FIRE RATED (FD601 only)



- Rated 20 minutes
- Standard builder panel profile



FD601 Smooth ◀



FD601 Oak ✖

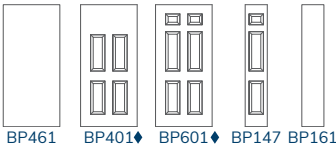
Unfinished only

Standard builder panel profile

Unfinished only

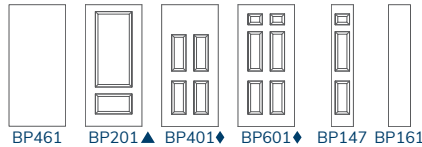
Standard builder panel profile

OAK



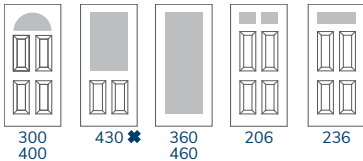
BP461 BP401♦ BP601♦ BP147 BP161

SMOOTH



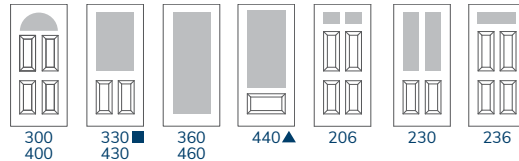
BP461 BP201▲ BP401♦ BP601♦ BP147 BP161

CUTOUTS

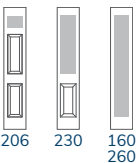


300/400 430✖ 360/460 206 236

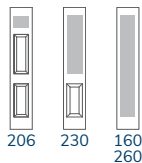
CUTOUTS



300/400 330/430 360/460 440▲ 206 230 236



206 230 160/260



206 230 160/260

NOTES

Unless otherwise noted:

- All doors available in 36"
- All sidelites available in 12" and 14"
- ✖ 32" also
- ▲ 34" also
- 30" & 32" only
- ◀ 30" & 32" also
- ♦ 30", 32" & 34" also

6'8" height doors and sidelites

IMPACT



No Shutters Required Flush-glazed Fiberglass Doors

DESIGNED TO MEET
IMPACT REQUIREMENTS
FOR "HVHZ" AREAS
IN FLORIDA



Durability

- Fiberglass door panels won't dent, rust, rot, or crack
- Ball bearing hinge prevents door sag and hinge wear for smooth operation
- PVC jambs will not rot or absorb moisture (no Sill Key™ System needed)
- Sill Key™ System (on wood jambs) doesn't allow jamb bottom to sit on sub floor or sill where it is susceptible to water damage**

Performance

- High-performance, dual-fastening snap-fit lite frame—Premium DP and Impact performance
- Flush glaze design—Optimal design and structural performance
- Triple-pane decorative glass with safety laminated interior—energy-efficient and Impact resistant
- 100% CFC-free polyurethane foam core—Energy-efficient insulation and environmentally friendly

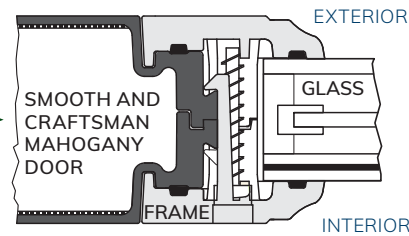
Design

- True resemblance of a real wood door
Woodgrain: Unique detail in every design
Smooth: Crisp design and paintable to match any décor
- Lite frame and stile alignment—Architecturally correct design
- Matching glass coming, sill, and hinge finish provides enhanced look and appearance
- High-definition panel embossments give elegant curb appeal

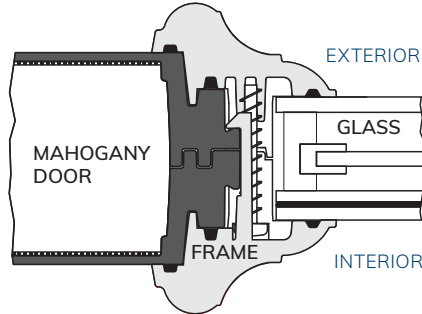
High Performance Door & Frame System



Flush Glaze Frame



Mahogany Lip Lite Frame



- Integrated Door, Frame, and Glass for Superior Performance
- Reinforced Fiberglass Door Skin
- Dual-Fastening Snap-Fit Frame Design
- Safety Laminated Glass Interior/ Safety Tempered Exterior
—Interior: 1/8" x .090PVB x 1/8"

FLORIDA BUILDING CODE TESTING INFORMATION

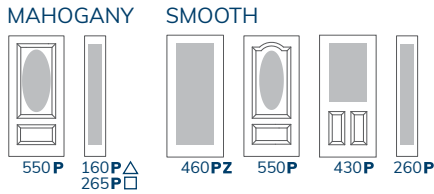
DOOR TYPE	TESTING NUMBER	SWING	Panel/Opaque				
			Glazed	±75	+60 / -70	±55	±55
Panel/ Opaque	FL# 20867.2	Outswing	DP Rating	±75	+60 / -70	±55	±55
			Impact	Yes	Yes	Yes	Yes
Glazed	FL# 20867.1	Outswing	DP Rating	± 60*	+60 / -70	±55	±55
			Impact	Yes	Yes	Yes	Yes

Visit sigmark.com for Evaluation Reports and Drawings (go to "Performance Data"). You can also view Evaluation Reports/Drawings at floridabuilding.org.

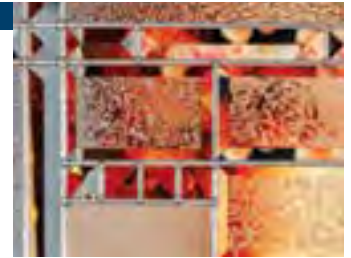
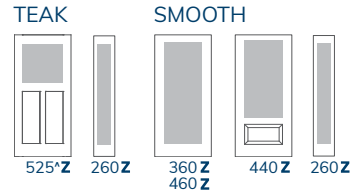
Doors with sidelite(s) are continuous head & sill. DP Ratings shown are based on wood jambs. PVC Jamb DP Ratings on website.

* 3/4 Oval DP Rating: + 75 / - 75 (Smooth)
** Maximum protection is achieved only when the door system is installed and caulked properly

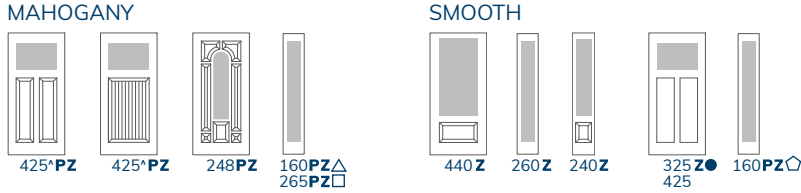
ST. JANE®



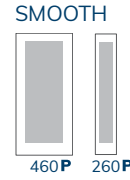
PRESTON®



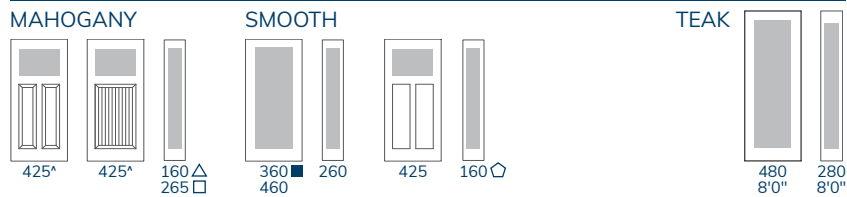
CUBE™



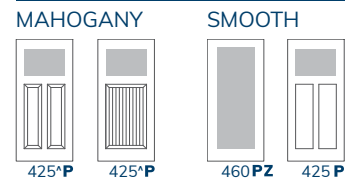
TURQUOISE™



CORD

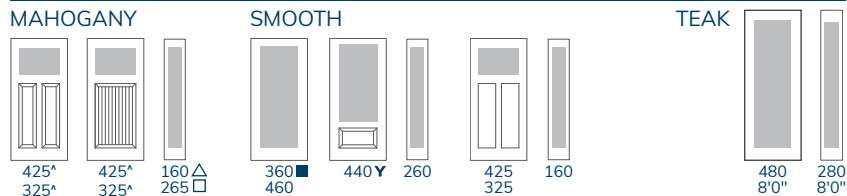


LEHIGH®

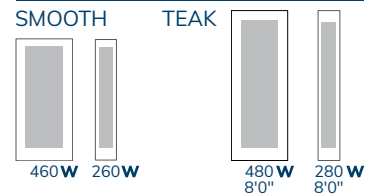


Flush Glaze options with and without Simulated Divided Lites (SDLs) on pages 30-31

PRIVACY and SANDSTONE™

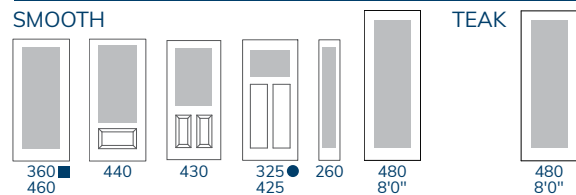


IRON JANE™

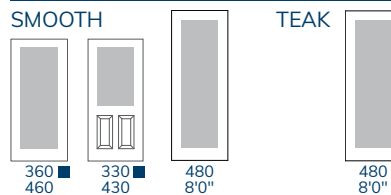


Flush Glaze options with and without Simulated Divided Lites (SDLs) on pages 30-31

CLEAR LOW-E



MINI BLINDS LOW-E



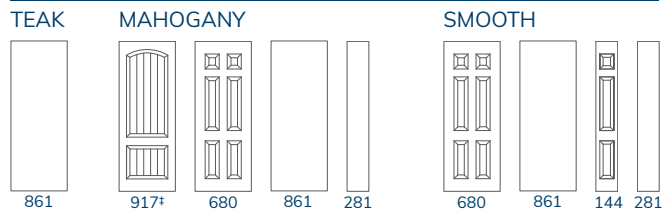
See Page 37 for details

Flush Glaze options with and without Simulated Divided Lites (SDLs) on pages 30-31

PANEL



8'0" PANEL & FLUSH



▲ Screwed-on dentil shelf option

† Square and round clavos options

Y Privacy glass only



NOTES

Unless otherwise noted:

- All doors available in 36"

- All sidelites available in 12" and 14"

■ 30" & 32" only

● 30" & 32" also

✳ 32" also

● 30" only

◊ 10" also

◻ 14" only

△ 10" & 12" only

P Patina coming

Z Zinc coming

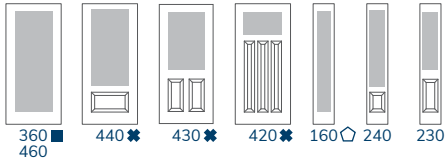
W Wrought iron

6'8" height doors and sidelites

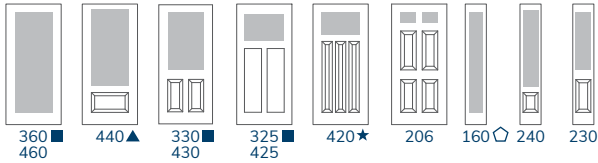
CLEAR LOW-E

Glass Code = CLR

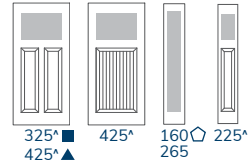
OAK



SMOOTH



MAHOGANY



▲ Screwed-on dentil shelf option

Transom options also available – contact our sales team for specific information

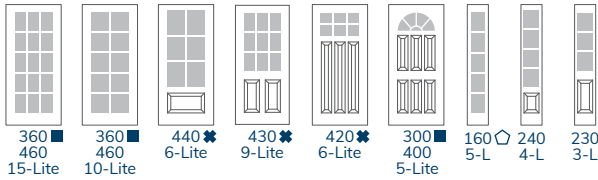


CLR460 Smooth

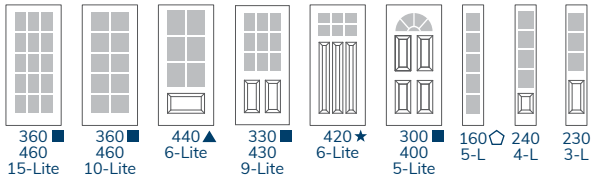
INTERNAL GRILLE LOW-E

Glass Code = GBG

OAK

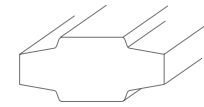


SMOOTH



GRILLE OPTIONS

3/4" Contour Profile



5/8" Flat Bar Profile

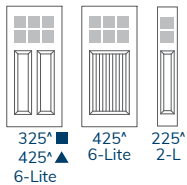


GBG430 9-Lite Smooth

MOLDED SDL GRILLES

Glass Code = CGS

MAHOGANY



Mahogany Only

Bronze spacer and shadow bars will come standard on all doors with the 3-Lite or 6-Lite Grille profile along with the 2-Lite Sidelite.

SMOOTH



NOTES

- Unless otherwise noted:
- All doors available in 36"
- All sidelites available in 12" and 14"
- 30" & 32" only ◊ 10" also
- ✱ 32" also
- ★ 32" & 34" also
- ▲ 34" also



▲ Screwed-on dentil shelf option



All doors and sidelites in the 6'8" Clear Low-E, Internal Grille Low-E, and Molded SDL Grilles Collections are ENERGY STAR certified for all 50 states



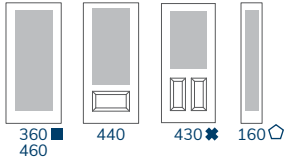
CGS425 6-Lite[▲] Mahogany

6'8" height doors and sidelites

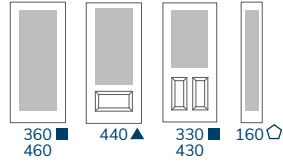
INTERNAL MINI BLINDS LOW-E

Glass Code = MBL

OAK



SMOOTH



Dual function:
Raise/Lower and Tilt

Single Operator

Standard 1/2" Slats



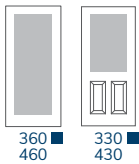
MBL460 Smooth

IMPACT INTERNAL MINI BLINDS LOW-E

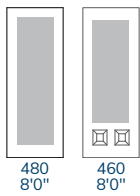
Glass Code = MBL



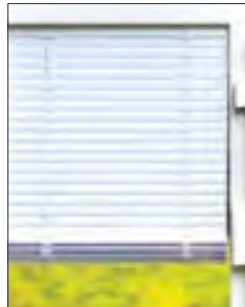
SMOOTH



OAK / SMOOTH



Flush Glazed Doors
See page 35 for Impact
door information



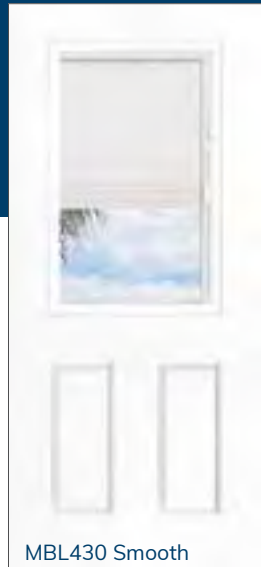
Dual function:
Raise/Lower and Tilt

Dual Operator

3/8" Slats

Flush Profile Lite Frame

Paintable Lite Frame

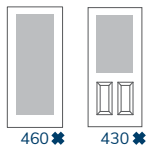


MBL430 Smooth

VENT LITES LOW-E

Glass Code = VNT

SMOOTH



Locking latch



Window handle for easy operation



Ergonomic vent handles



VNT460 Smooth



VNT430 Smooth

NOTES

- Unless otherwise noted:
- All doors available in 36"
- All sidelites available in 12" and 14"
- 30" & 32" only ◇ 10" also
- ★ 32" also
- ▲ 34" also

6'8" height doors and sidelites

8'0" HEIGHT



All doors and sidelites in the 8'0" Collection are ENERGY STAR certified for all 50 states



HVHZ Impact rated options available on page 35

NOTES

- Unless otherwise noted:
- All doors available in 36"
- All sidelites available in 14"
- ◆ 42" also P Patina coming
- ◇ 12" also Z Zinc coming
- 12" also, W Wrought iron
- Smooth only

◆ Available in Smooth only

LEH480 Teak



COR525 Teak



STJ460 Oak

ST. JANE®

MAHOGANY



445 Z

SENA™

TEAK / MAHOGANY



525 P

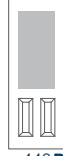


280 P ◇

OAK / SMOOTH



460 P Z



440 P Z

OAK / SMOOTH



260 P ◆



260 P □

PORTOFINO™

MAHOGANY



445 W

TURQUOISE™

OAK / SMOOTH



460 Z

PROVENCE™

OAK / SMOOTH



460 P Z



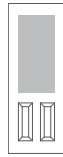
240 Z ◆



240 Z □

STELLAR™

MAHOGANY



445 P Z

OAK / SMOOTH



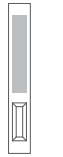
460 P Z



440 P



240 Z ◆



240 Z □

LEHIGH®

TEAK



480 P

MAHOGANY



445 P

OAK / SMOOTH



480 P



460 P Z



440 P Z

PALM SPRINGS™

MAHOGANY



445 Z

OAK / SMOOTH



460 Z



440 Z

IRON JANE™

TEAK



480 W

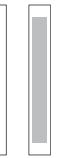


280 W ◇

MAHOGANY



445 W



280 W ◇

OAK / SMOOTH



480 W



460 W



440 W

CUBE™

TEAK



525 P Z

OAK / SMOOTH



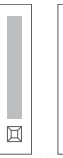
460 P Z



440 Z



260 P Z ◆



240 Z ◆



260 P Z □



240 Z □

LONE STAR™

MAHOGANY

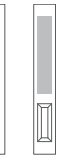


445 P

OAK / SMOOTH



240 Z ◆



240 Z □

SOLITAIRE™

OAK



460 Z

SMOOTH



460 Z

CLASSIC

OAK / SMOOTH



460 Z

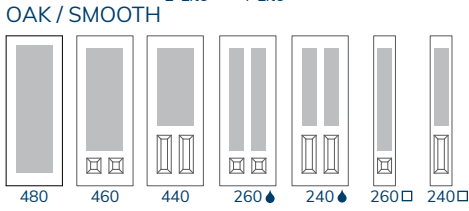
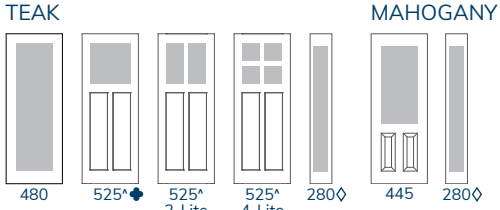


240 Z

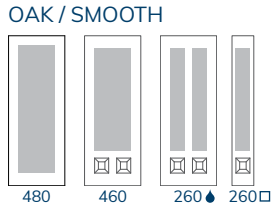
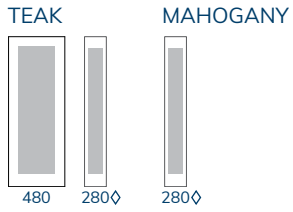


240 Z □

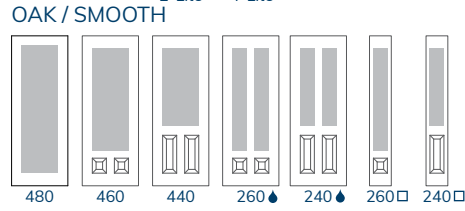
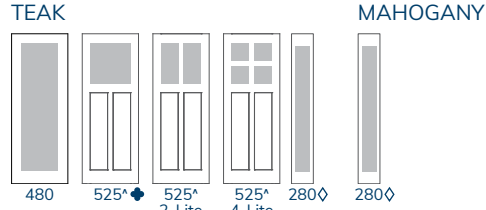
PRIVACY



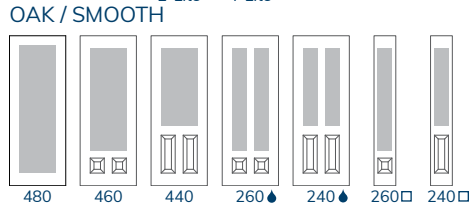
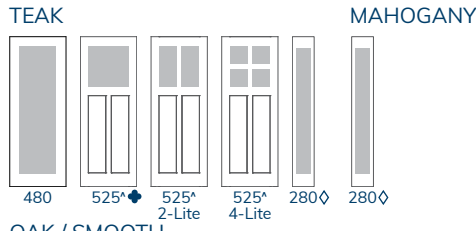
CROSS REED



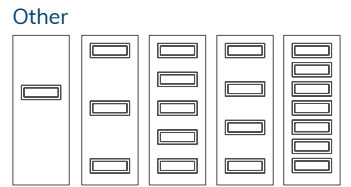
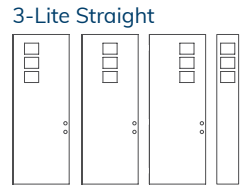
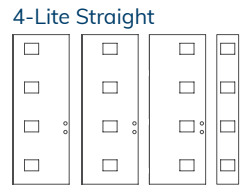
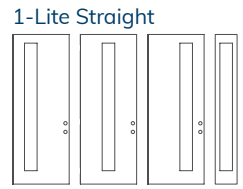
SANDSTONE™



CORD

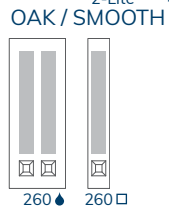
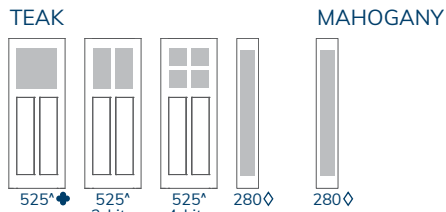


METRO™ SMOOTH

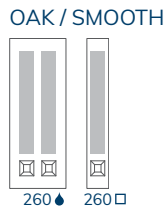
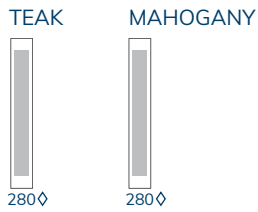


Metro™ available with Textured Obscure glass. Countless door cutout options available based on variety of frame shapes shown here – contact our sales team for specific information.

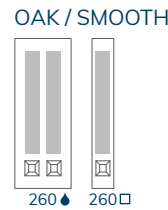
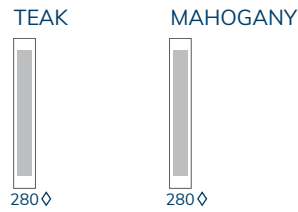
HAMMERED



REEDED



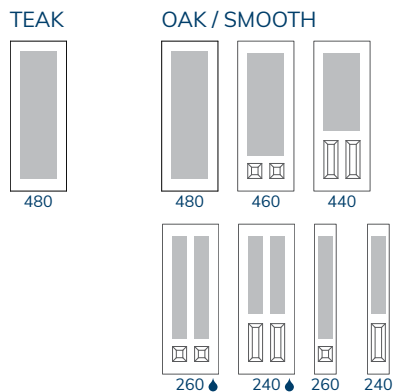
RAIN FALL™



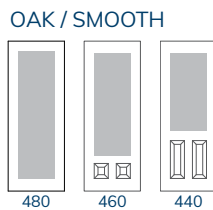
Flush Glaze options with and without Simulated Divided Lites (SDLs) on page 30-31



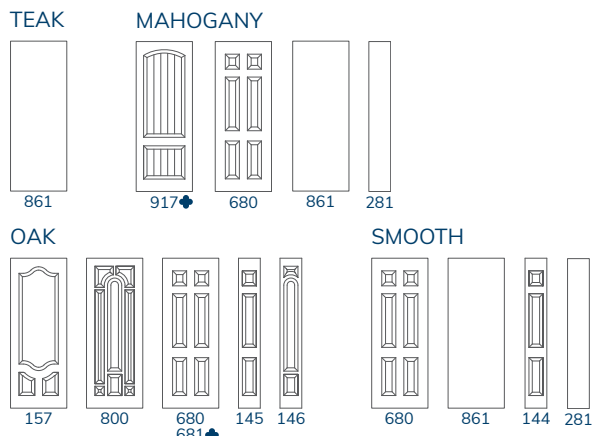
CLEAR LOW-E



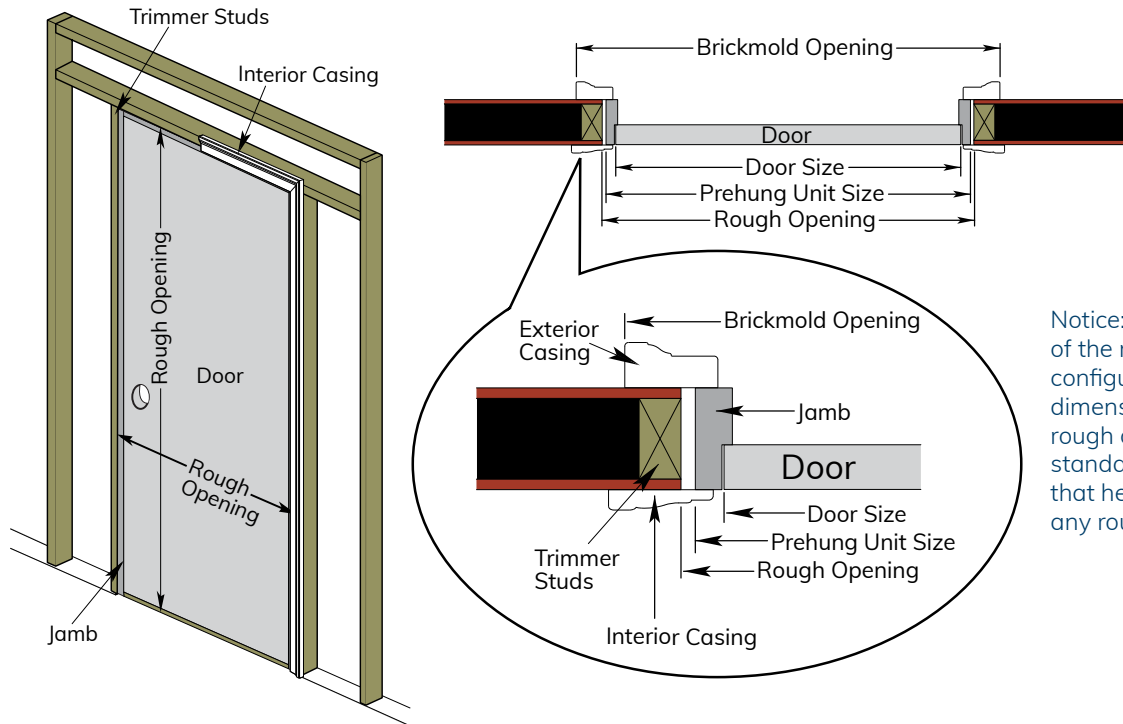
MINI BLINDS LOW-E



PANEL



ROUGH OPENING, DOOR SWING & HANDING



Notice: Listed at right are some of the most common door configurations, with rough opening dimensions. If you find that your rough opening does not match the standard sizes, we have options that help to accommodate almost any rough opening size.

Doors with Sidelite(s): **Rough Opening sizes shown on page 41 are for a standard continuous head and sill setup with primed wood jamb or unfinished PVC jamb.**

Note: Some PVC jamb options may add 1/2" per sidelite to the width shown in the chart at right (this will be a continuous head and sill unit, but at a box construction size).

Box Construction Size Option: We also offer our doors in box construction size depending on jamb option. This size adds 1/2" to the measurements shown per sidelite.

Box Construction with Spread Mullion Option: Allows for a 1/2" to 3" spread between door and sidelite. Built as standard box construction and only available on certain jamb options.

Double Door with Two Sidelites: Only available in Box Construction as standard and no Spread Mullion.

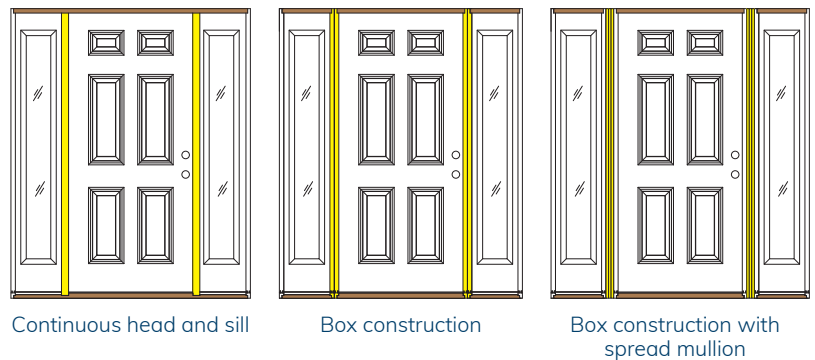
Outswing Units: Come standard with a Bumper-Style Sill, which requires that you subtract 1-1/8" from the Prehung Unit and Rough Opening height. Also add 1/2" to Brickmold Opening for width.

Wheelchair Accessible: Subtract 7/8" from any of the heights shown.

Threshold: Inswing Units – Threshold height is 1-3/8", which allows for approximately 1" opening clearance. If a spacer is needed under sill to allow for proper opening clearance, please adjust rough opening accordingly.

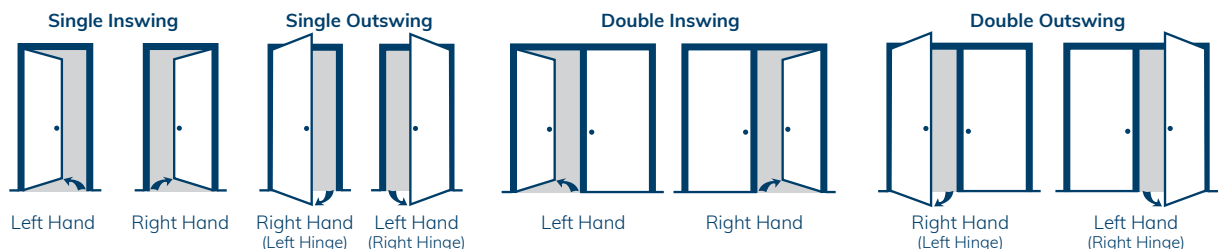
Transom: To calculate heights for combined doors and transoms, add the transom height to the chart height.

PRE-HUNG SETUP CONSTRUCTION EXAMPLES



DOOR SWING & HANDING

Viewed From The Outside

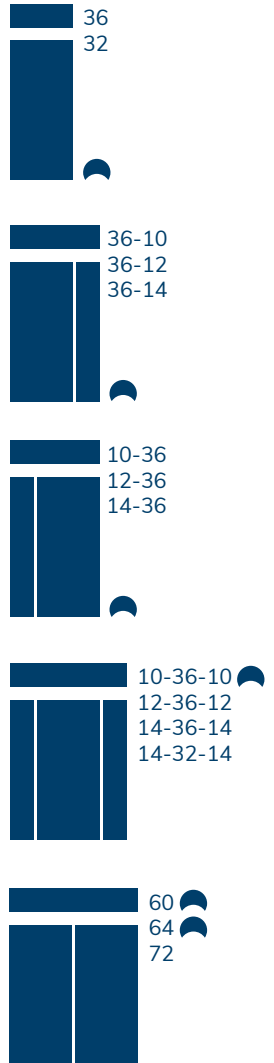


ROUGH OPENING CHART

NOMINAL DOOR WIDTH	NOMINAL DOOR HEIGHT	PREHUNG UNIT SIZE	ROUGH OPENING	BRICKMOLD OPENING
14"	6/8	15-1/2" x 81-5/8"	16-1/4" x 82-1/8"	18" x 82-7/8"
12"	6/8	13-1/2" x 81-5/8"	14-1/4" x 82-1/8"	16" x 82-7/8"
10"	6/8	11-5/8" x 81-5/8"	12-3/8" x 82-1/8"	14-1/8" x 82-7/8"
14"	7/0	15-1/2" x 85-5/8"	16-1/4" x 86-1/8"	18" x 86-7/8"
14"	8/0	15-1/2" x 97-5/8"	16-1/4" x 98-1/8"	18" x 98-7/8"
12"	8/0	13-1/2" x 97-5/8"	14-1/4" x 98-1/8"	16" x 98-7/8"
36"	6/8	37-1/2" x 81-5/8"	38-1/4" x 82-1/8"	40" x 82-7/8"
34"	6/8	35-1/2" x 81-5/8"	36-1/4" x 82-1/8"	38" x 82-7/8"
32"	6/8	33-1/2" x 81-5/8"	34-1/4" x 82-1/8"	36" x 82-7/8"
30"	6/8	31-1/2" x 81-5/8"	32-1/4" x 82-1/8"	34" x 82-7/8"
36"	7/0	37-1/2" x 85-5/8"	38-1/4" x 86-1/8"	40" x 86-7/8"
36"	8/0	37-1/2" x 97-5/8"	38-1/4" x 98-1/8"	40" x 98-7/8"
42"	8/0	43-1/2" x 97-5/8"	44-1/4" x 98-1/8"	46" x 98-7/8"
36"-14"SL	6/8	52-1/2" x 81-5/8"	53-1/4" x 82-1/8"	55" x 82-7/8"
36"-12"SL	6/8	50-1/2" x 81-5/8"	51-1/4" x 82-1/8"	53" x 82-7/8"
36"-10"SL	6/8	48-5/8" x 81-5/8"	49-3/8" x 82-1/8"	51-1/8" x 82-7/8"
32"-14"SL	6/8	48-1/2" x 81-5/8"	49-1/4" x 82-1/8"	51" x 82-7/8"
32"-12"SL	6/8	46-1/2" x 81-5/8"	47-1/4" x 82-1/8"	49" x 82-7/8"
36"-14"SL	7/0	52-1/2" x 85-5/8"	53-1/4" x 86-1/8"	55" x 86-7/8"
36"-14"SL	8/0	52-1/2" x 97-5/8"	53-1/4" x 98-1/8"	55" x 98-7/8"
36"-12"SL	8/0	50-1/2" x 97-5/8"	51-1/4" x 98-1/8"	53" x 98-7/8"
42"-14"SL	8/0	58-1/2" x 97-5/8"	59-1/4" x 98-1/8"	61" x 98-7/8"
36"-14"SL	6/8	67-1/2" x 81-5/8"	68-1/4" x 82-1/8"	70" x 82-7/8"
36"-12"SL	6/8	63-1/2" x 81-5/8"	64-1/4" x 82-1/8"	66" x 82-7/8"
36"-10"SL	6/8	59-3/4" x 81-5/8"	60-1/2" x 82-1/8"	62-1/4" x 82-7/8"
32"-14"SL	6/8	63-1/2" x 81-5/8"	64-1/4" x 82-1/8"	66" x 82-7/8"
32"-12"SL	6/8	59-1/2" x 81-5/8"	60-1/4" x 82-1/8"	62" x 82-7/8"
36"-14"SL	7/0	67-1/2" x 85-5/8"	68-1/4" x 86-1/8"	70" x 86-7/8"
36"-14"SL	8/0	67-1/2" x 97-5/8"	68-1/4" x 98-1/8"	70" x 98-7/8"
36"-12"SL	8/0	63-1/2" x 97-5/8"	64-1/4" x 98-1/8"	66" x 98-7/8"
42"-14"SL	8/0	73-1/2" x 97-5/8"	74-1/4" x 98-1/8"	76" x 98-7/8"
72" (36-36)	6/8	74" x 81-5/8"	74-3/4" x 82-1/8"	76-1/2" x 82-7/8"
68" (34-34)	6/8	70" x 81-5/8"	70-3/4" x 82-1/8"	72-1/2" x 82-7/8"
64" (32-32)	6/8	66" x 81-5/8"	66-3/4" x 82-1/8"	68-1/2" x 82-7/8"
60" (30-30)	6/8	62" x 81-5/8"	62-3/4" x 82-1/8"	64-1/2" x 82-7/8"
72" (36-36)	7/0	74" x 85-5/8"	74-3/4" x 86-1/8"	76-1/2" x 86-7/8"
72" (36-36)	8/0	74" x 97-5/8"	74-3/4" x 98-1/8"	76-1/2" x 98-7/8"
84" (42-42)	8/0	86" x 97-5/8"	86-3/4" x 98-1/8"	88-1/2" x 98-7/8"
88" (12-32-32-12)	6/8	93" x 81-5/8"	93-3/4" x 82-1/8"	95-1/2" x 82-7/8"
96" (12-36-36-12)	6/8	101" x 81-5/8"	101-3/4" x 82-1/8"	103-1/2" x 82-7/8"
92" (14-32-32-14)	6/8	97" x 81-5/8"	97-3/4" x 82-1/8"	99-1/2" x 82-7/8"
100" (14-36-36-14)	6/8	105" x 81-5/8"	105-3/4" x 82-1/8"	107-1/2" x 82-7/8"
100" (14-36-36-14)	7/0	105" x 85-5/8"	105-3/4" x 86-1/8"	107-1/2" x 86-7/8"
100" (14-36-36-14)	8/0	105" x 97-5/8"	105-3/4" x 98-1/8"	107-1/2" x 98-7/8"
100" (12-36-36-12)	8/0	101" x 97-5/8"	101-3/4" x 98-1/8"	103-1/2" x 98-7/8"

Limited transoms available – contact our sales team for specific information

TRANSOMS



Heights 12" & 14-3/4" unless otherwise noted

12" height only

Widths listed next to configuration

LIMITED LIFETIME WARRANTY

For Purchases Made On or After August 1, 2018

Signamark fiberglass exterior entry and patio door systems, door slabs and other components (hereinafter Product) by Trinity Glass International, Inc. (hereinafter Trinity) are warranted to be free from defects in material and workmanship that would render the Product unfit for its intended use under normal conditions, subject to the conditions and restrictions contained herein. This warranty extends only to the original purchaser of the Product (hereinafter Customer) from Trinity, from the date the Product is first purchased and extending to the following periods:

Limited Lifetime Warranty on all door slabs and sidelite slabs

Limited Lifetime Warranty on PVC jambs, brickmoulds and mullions

Limited Lifetime Warranty on doorlite (glass) frames

10 Years Limited Warranty on insulated glass against seal failure

5 Years Limited Warranty on factory finish (paint and stain)

2 Years Limited Warranty on wood products (i.e. jambs, brickmoulds, mullion) and all other components not specified in this warranty

The following are exceptions that may void the warranty or are not otherwise considered to be defects in material or workmanship:

1. Damage caused by failure to comply with the installation, finishing and maintenance instructions and recommendations by Trinity.
2. Damage caused by improper storage and handling, abuse, abnormal and unreasonable use by the Customer or other parties beyond the control of Trinity, to include but not limited to damages caused during shipping, handling, installation, or any act(s) performed to the Products not in compliance with Trinity's instructions and recommendations.
3. Damage from harsh natural conditions, including but not limited to substantial exposure to sun, salt spray, lightning, windstorms, earthquakes, acts of God, and other severe environmental conditions including but not limited to harsh chemicals or solvents, such as acidic brick washes or stucco leach.
4. Broken or shattered glass, normal wear and tear of components, improper maintenance, improper cleaning, improper caulking, and damage caused by pets or wild animals.
5. Bowing not exceeding 1/4 inch in the plane of the door. This shall be determined by placing a straight edge on the bowed surface of the door and measuring the point of maximum distance between the bottom of the straight edge and the surface of the door, accounting for panels and glazing recesses.
6. For unfinished Products, failure to properly finish all door/sidelite/transom surfaces and/or jamb materials within 2 weeks of installation or 6 months from the date of purchase, whichever is sooner.
7. Natural variations in color or texture of any wood grain surface shall not be considered a defect. When exposed to direct sunlight over long periods of time, discoloration may occur, but this will be within the accepted tolerances contained within 5 Delta E units, calculated in accordance with ASTM E 308-85, ASTM E 805-81 and ASTM D 2244-85, effective on the date the product is manufactured. Non-uniform fading and/or color changes are natural occurrences if the exterior surfaces of the products are not equally exposed to the sun and other environmental conditions.
8. Natural conditions created during the manufacturing process used in making decorative glass panels such as bubbles, streaks and swirls in decorative glass shall not be considered a defect. Irregularity in glass that is not visible from farther than six feet shall not be considered defects.
9. Any damage caused by improper installation of a storm door or the installation of a non-ventilating, full glass storm door shall void this warranty.
10. This warranty applies only to Products installed in owner occupied residential dwellings within the U.S., during the Customer's ownership, and is non-transferable.
11. Repaired or replaced components are warranted on the same terms and only for the remainder of the original warranty period. Color and grain match are not guaranteed. Trinity reserves the right to discontinue or change products or components. If a product or component is not available, Trinity may select and provide a like product or component of equal quality and price.

Warranty Claim Procedures:

In the event of a defect covered under this warranty, Customer shall comply with the following claim procedures:

1. Written warranty claim shall be presented to Trinity.
2. Customer's written claim must include the following information:
 - Nature or adequate description of defect(s).
 - Identification of product including size, design, type, and product number (if available).
 - Date of purchase.
 - Proof of purchase.
3. Upon Trinity's request, Customer must permit Trinity (or its representative) to inspect the claimed defective Product and provide photographs of the defective Product. Trinity shall have 30 days from receipt of Customer's written claim to exercise this option to inspect.

Upon receipt of a valid claim, Trinity shall have the option to either repair the product or provide a replacement product of like kind and design. Further, in lieu of repair or replacement, Trinity reserves the right to refund the Customer's purchase price (not replacement price). THIS SHALL BE THE CUSTOMER'S SOLE AND EXCLUSIVE REMEDY, AND IN NO EVENT SHALL TRINITY BE RESPONSIBLE FOR LABOR, SHIPPING, FINISHING EXPENSES, REMOVAL OF PRODUCT, INSTALLATION OF REPLACEMENT PRODUCT, OR OTHER INCIDENTAL AND/OR CONSEQUENTIAL CHARGES, COSTS, EXPENSES OR CLAIMS INCURRED BY CUSTOMER.

If Trinity elects to refund the purchase price, this warranty will be prorated from the date of purchase in the following manner: 0-5 years, 100% of the original purchase price; 6-10 years, prorated at 75% of original purchase price; and 11 years and up, 50% of original purchase price.

Trinity makes no other warranty, including a warranty of merchantability or fitness for a particular purpose, with respect to the product or replacement except to the extent provided herein. Invalidation of any one or more of the provisions of this limited warranty shall in no way affect any of the provisions in this limited warranty which remain in full force and effect. Any and all legal actions for any and every breach of this warranty shall be instituted and maintained in any court of competent jurisdiction in the County of King, State of Washington. Trinity reserves the right to modify the terms and conditions of this warranty without prior notice.

FINISHING INSTRUCTIONS

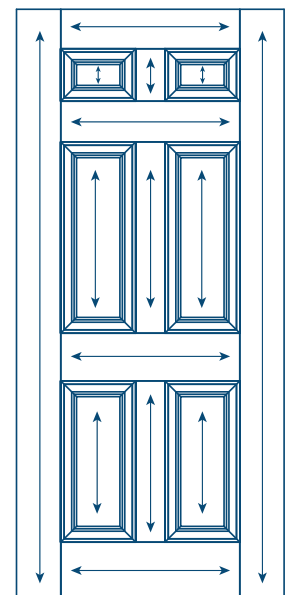
SIGNAMARK HAND STAINED DOORS: Signamark hand stained doors already come with a polyurethane UV top coat which protects the door during the 5 year finish warranty. It does not require additional topcoats at time of purchase but you will need to apply additional topcoats after 2-5 years as mentioned in the Care and Maintenance section below.

PAINTED FINISH: SMOOTH FIBERGLASS DOORS

SMOOTH FIBERGLASS DOORS: You can use any high quality oil based or latex based exterior paint. Priming the door is not required, but we do recommend a light sanding with 600 grit sandpaper for better paint adhesion. Before applying a paint, wipe the door and doorlite frame with a damp cloth to remove any dirt, oil, or debris. Allow the surface to fully dry before painting. For a pleasing look, we recommend painting with strokes in the directions shown. Apply at least two coats of paint, following the paint manufacturer's recommended instructions along with drying time between coats.

CARE AND MAINTENANCE

We recommend on any hand stained product that you reapply a UV topcoat over the existing topcoat every 2-5 years to protect your beautiful entryway from harsh weathering. We do not recommend stripping the finish. In locations with severe weather exposure, more frequent maintenance may be required. Caulk as well as repaint your doors as soon as deterioration can be detected.



SIGNAMARK®



Fiberglass Entry Door Systems

SELECT PROGRAM OFFERING



Contact our sales team at 1 800 235 5533 for specific finishes and options