



BUILDING CODE COMPLIANCE OFFICE (BCCO)  
PRODUCT CONTROL DIVISION

MIAMI-DADE COUNTY, FLORIDA  
METRO-DADE FLAGLER BUILDING  
140 WEST FLAGLER STREET, SUITE 1603  
MIAMI, FLORIDA 33130-1563  
(305) 375-2901 FAX (305) 375-2908

**NOTICE OF ACCEPTANCE (NOA)**

[www.buildingcodeonline.com](http://www.buildingcodeonline.com)

Trinity Glass International  
4621 192<sup>nd</sup> Street East  
Tacoma, WA 98446

**SCOPE:**

This NOA is being issued under the applicable rules and regulations governing the use of construction materials. The documentation submitted has been reviewed by Miami-Dade County Product Control Division and accepted by the Board of Rules and Appeals (BORA) to be used in Miami Dade County and other areas where allowed by the Authority Having Jurisdiction (AHJ).

This NOA shall not be valid after the expiration date stated below. The Miami-Dade County Product Control Division (In Miami Dade County) and/or the AHJ (in areas other than Miami Dade County) reserve the right to have this product or material tested for quality assurance purposes. If this product or material fails to perform in the accepted manner, the manufacturer will incur the expense of such testing and the AHJ may immediately revoke, modify, or suspend the use of such product or material within their jurisdiction. BORA reserves the right to revoke this acceptance, if it is determined by Miami-Dade County Product Control Division that this product or material fails to meet the requirements of the applicable building code.

This product is approved as described herein, and has been designed to comply with the Florida Building Code, including the High Velocity Hurricane Zone.

**DESCRIPTION: "Premium" 8' - 0" Inswing Opaque Fiberglass Door - w/ and w/o Sidelites**

**APPROVAL DOCUMENT:** Drawing No. S-2611, titled Opaque Premium Fiberglass Doors with & w/out Sidelite(s) Inswing "Non-Impact", sheets 1 through 7 of 7, dated 11/14/05 with revision #1 dated 03/16/06, prepared by RW Building Consultants, Inc., signed and sealed by Lyndon F. Schmidt, bearing the Miami-Dade County Product Control Approval stamp with the Notice of Acceptance number and approval date by the Miami-Dade County Product Control Division.

**MISSILE IMPACT RATING: None**

**LABELING:** Each unit shall bear a permanent label with the manufacturer's name or logo, city, state and following statement: "Miami-Dade County Product Control Approved", unless otherwise noted herein.

**RENEWAL** of this NOA shall be considered after a renewal application has been filed and there has been no change in the applicable building code negatively affecting the performance of this product.

**TERMINATION** of this NOA will occur after the expiration date or if there has been a revision or change in the materials, use, and/or manufacture of the product or process. Misuse of this NOA as an endorsement of any product, for sales, advertising or any other purposes shall automatically terminate this NOA. Failure to comply with any section of this NOA shall be cause for termination and removal of NOA.

**ADVERTISEMENT:** The NOA number preceded by the words Miami-Dade County, Florida, and followed by the expiration date may be displayed in advertising literature. If any portion of the NOA is displayed, then it shall be done in its entirety.

**INSPECTION:** A copy of this entire NOA shall be provided to the user by the manufacturer or its distributors and shall be available for inspection at the job site at the request of the Building Official. This NOA consists of this page 1 and evidence page E-1, as well as approval document mentioned above. The submitted documentation was reviewed by **Manuel Perez, P.E.**



NOA No 05-1130.03  
Expiration Date: April 13, 2011  
Approval Date: April 13, 2006  
Page 1

**Trinity Glass International**

**NOTICE OF ACCEPTANCE: EVIDENCE SUBMITTED**

**A. DRAWINGS**

1. Manufacturer's die drawings and sections.
2. Drawing No **S-2611**, Sheets 1 through 7 of 7, titled Opaque Premium Fiberglass Doors with & w/out Sidelite(s) Inswing "Non-Impact", prepared by RW Building Consultants, Inc., dated 11/14/05 with revision #1 dated 03/16/06, signed and sealed by Lyndon F. Schmidt, P.E.

**B. TESTS**

1. Test reports on 1) Air Infiltration Test, per FBC, TAS 202-94  
2) Uniform Static Air Pressure Test, Loading per FBC TAS 202-94  
3) Water Resistance Test, per FBC, TAS 202-94  
4) Forced Entry Test, per FBC 2411 3.2.1, TAS 202-94  
along with marked-up drawings and installation diagram of Opaque Premium Fiberglass Doors with & w/out Sidelite(s) Inswing "Non-Impact", prepared by Testing Evaluation Laboratories, Inc., Test Report No. **TEL-05-1026-1** dated 09/13-10/22/005 and sealed by Wendell W. Haney, P.E.

**C. CALCULATIONS**

1. Anchor verification calculations complying with FBC 2004, dated 11/21/05, prepared by RW Building Consultants, Inc., signed and sealed by Lyndon F. Schmidt, P.E.  
**Complies with ASTM E1300-98**

**D. QUALITY ASSURANCE**

1. Miami Dade Building Code Compliance Office (BCCO).

**E. MATERIAL CERTIFICATIONS**

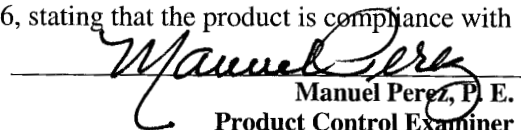
1. Test Report No. **ETC-05-781-17122.0**, prepared by ETC Laboratories., issued to Trinity Glass International, dated 10/19/05, Polyurethane Foam, tested per **ASTM D2843** "Self Ignition Temperature"; **ASTM E84** "Flame Spread Index", **ASTM E84** "Smoke Developed Index", signed and sealed by Joseph Labora Doldan, P.E.
2. Notice of Acceptance No. **05-1206.01** issued to Trinity Glass International, for their Unfinished Fiberglass Door Skin approved on 03/02/06 and expiring on 03/02/11.
3. Notice of Acceptance No. **02-0429.11** issued to Trinity Glass International, for their Trinity Lite Frame approved on 07/3/02 and expiring on 07/03/07.

**F. STATEMENTS**

1. Statement letter of conformance and no financial interest, dated 11/21/05, signed Lyndon F. Schmidt, P.E.
2. Statement letter of no financial interest, dated 07/21/05, signed by Andrew Na.

**G. OTHER**

1. Letter from the consultant, dated 03/02/06, stating that the product is compliance with the Florida Building Code (FBC).

  
Manuel Perez, P. E.  
Product Control Examiner

NOA No 05-1130.03  
Expiration Date: April 13, 2011  
Approval Date: April 13, 2006



4621 192nd STREET EAST TACOMA, WA 98446  
 TEL: 253-875-7300 FAX: 253-875-7301

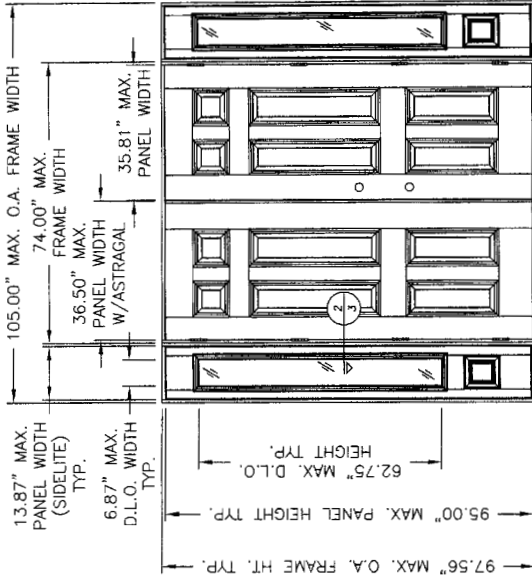
## OPAQUE PREMIUM FIBERGLASS DOORS WITH & W/OUT SIDELITE(S) - INSWING "NON-IMPACT"

### GENERAL NOTES

1. THIS PRODUCT HAS BEEN EVALUATED AND IS IN COMPLIANCE WITH THE FLORIDA BUILDING CODE INCLUDING THE "HIGH VELOCITY HURRICANE ZONE".
2. PRODUCT ANCHORS SHALL BE AS LISTED AND SPACED AS SHOWN ON DETAILS; ANCHOR EMBEDMENT TO BASE MATERIAL SHALL BE BEYOND WALL DRESSING OR STUCCO.
3. WHEN USED IN THE "HIGH VELOCITY HURRICANE ZONE" THIS PRODUCT IS REQUIRED TO BE PROTECTED WITH AN IMPACT RESISTANT COVERING THAT COMPLIES WITH SECTION 1626 OF THE FLORIDA BUILDING CODE.
4. WHEN USED IN AREAS OUTSIDE OF THE "HVHZ" REQUIRING WIND-BORNE DEBRIS PROTECTION, THIS PRODUCT IS REQUIRED TO BE PROTECTED WITH AN IMPACT RESISTANT COVERING THAT COMPLIES WITH SECTION 1609.1.4 OF THE FLORIDA BUILDING CODE.
5. FOR 2X STUD FRAMING CONSTRUCTION, THE ANCHORING OF THESE UNITS SHALL BE THE SAME AS THAT SHOWN FOR 2X BUCK MASONRY CONSTRUCTION.
6. CONDITIONS NOT COVERED BY THIS DRAWING ARE SUBJECT TO FURTHER ENGINEERING ANALYSIS.
7. WOOD BUCKS BY OTHERS, MUST BE ANCHORED PROPERLY TO TRANSFER LOADS TO STRUCTURE AND TO BE REVIEWED BY BUILDING OFFICIAL.
8. FOR DESIGN PRESSURE RATING SEE CHART UNDER EACH PRODUCT ELEVATION.
9. THIS PRODUCT DOES NOT MEET THE WATER REQUIREMENTS FOR THE HIGH VELOCITY HURRICANE ZONE (HVHZ). UNIT SHALL BE INSTALLED ONLY IN NON-HABITABLE AREAS OR AT HABITABLE LOCATIONS PROTECTED BY AN OVERHANG OR CANOPY SUCH THAT THE ANGLE BETWEEN THE EDGE OF CANOPY OR OVERHANG TO SILL IS LESS THAN 45 DEGREES.

### TABLE OF CONTENTS

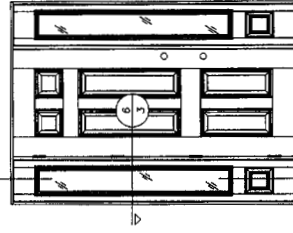
1	TYPICAL ELEVATIONS, DESIGN PRESSURES & GENERAL NOTES
2	VERTICAL CROSS SECTIONS & ASSEMBLY NOTES
3	HORIZONTAL CROSS SECTIONS
4	FRAME ANCHORING SINGLE, SINGLE W/SIDELITE & SIDELITES
5	FRAME ANCHORING DOUBLE & DOUBLE W/SIDELITES
6	COMPONENTS
7	BILL OF MATERIALS & GLAZING DETAIL



DOUBLE DOOR WITH SIDELITES (BOXED)

DESIGN PRESSURE (PSF.)	+47.0	-47.0
------------------------	-------	-------

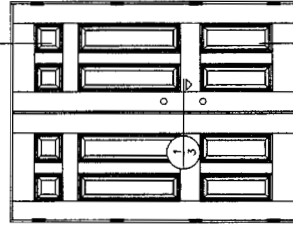
2



SINGLE DOOR WITH C.H.S. SIDELITES

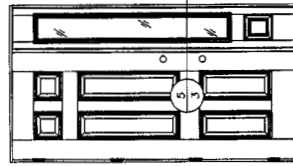
DESIGN PRESSURE (PSF.)	+47.0	-47.0
------------------------	-------	-------

1



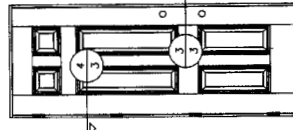
DOUBLE DOOR

DESIGN PRESSURE (PSF.)	+47.0	-47.0
------------------------	-------	-------



SINGLE DOOR WITH C.H.S. SIDELITE

DESIGN PRESSURE (PSF.)	+47.0	-47.0
------------------------	-------	-------



SINGLE DOOR

DESIGN PRESSURE (PSF.)	+47.0	-47.0
------------------------	-------	-------

Approved as complying with the Florida Building Code  
 Basis: **APRIL 15, 2006**  
 NOA# **05-1130-03**  
 Building Code Product Control  
 By: *[Signature]*

Documents Prepared By: *[Signature]*  
 BUILDING CONSULTANTS, INC.  
 P.O. Box 230 Vero Beach, FL 33595  
 Phone No.: 813 659,9197  
 Florida Board of Professional Engineers  
 Certificate Of Authorization No. 9813  
 3.17.06  
 Lyndon, F. Schmidt, P.E. No. 43499

PRODUCT: OPAQUE PREMIUM FIBERGLASS DOORS WITH & W/OUT SIDELITE(S) INSWING "NON-IMPACT"  
 PART OR ASSEMBLY:  
 TYPICAL ELEVATIONS, DESIGN PRESSURES & GENERAL NOTES

NO.	DATE	REVISIONS
1	3/16/06	REVISED PER DADE LETTER

DATE: 11/14/05  
 SCALE: N.T.S.  
 DWG. BY: AEM  
 CHK. BY: LFS  
 DRAWING NO.: S-2611  
 SHEET 1 OF 7

Documents Prepared By: **RW BUILDING CONSULTANTS, INC.**  
 P.O. Box 230 Venice, FL 33595  
 Phone No.: 813.559.9197  
 Florida Board of Professional Engineers  
 Certificate Of Authorization No. 9813  
 3-17-06 Lynden, F. Schmidt, P.E. No. 43409

PRODUCT: OPAQUE PREMIUM FIBERGLASS DOORS WITH & W/O SIDELITES (INSWING "NON-IMPACT")  
 PART OR ASSEMBLY: VERTICAL CROSS SECTIONS & ASSEMBLY NOTES

NO.	DATE	REVISED PER DATE LETTER	BY
1	03/16/06		WH

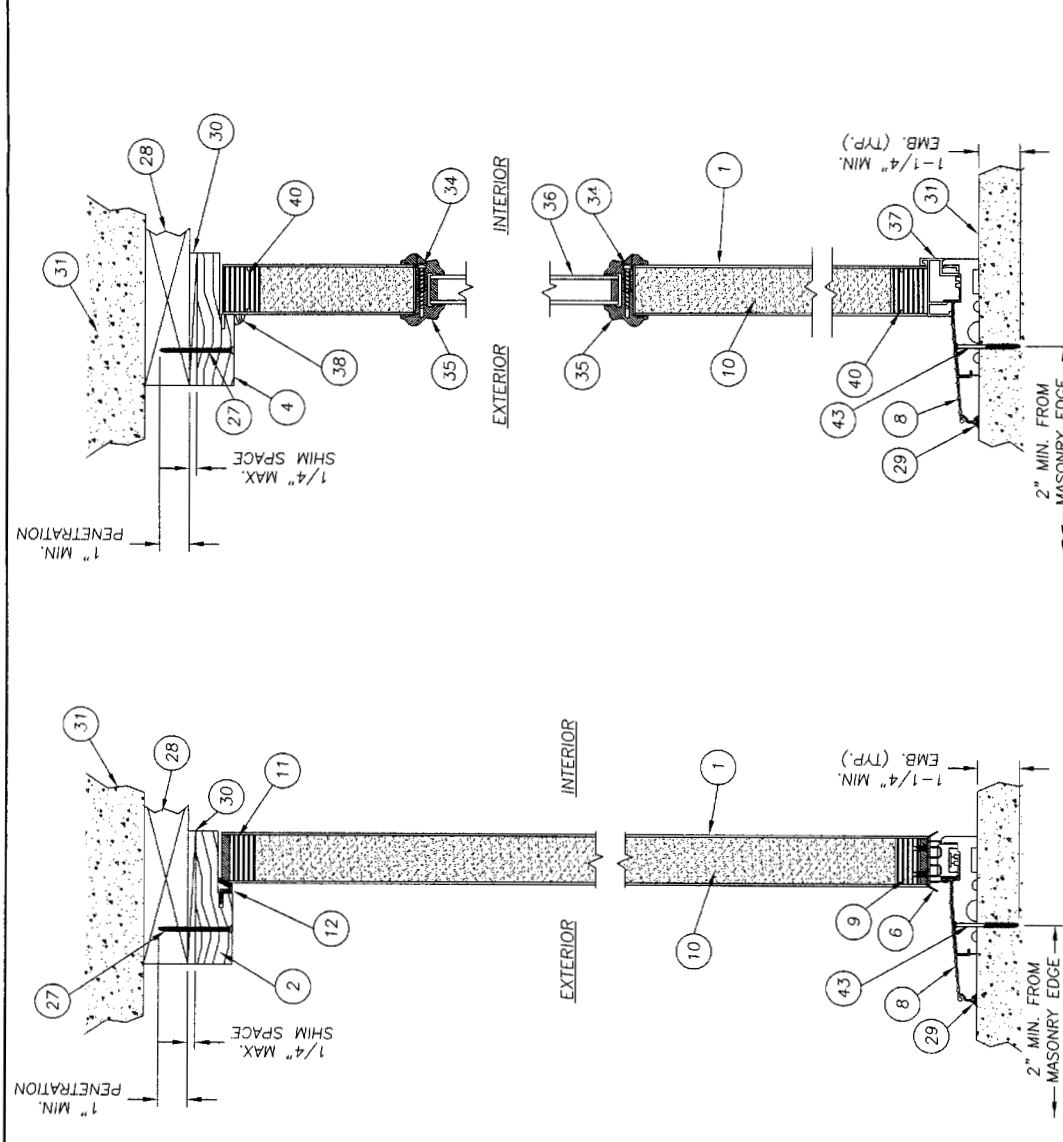
REVISIONS

DATE: 11/14/05  
 SCALE: N.T.S.  
 DWG. BY: AEM  
 CHK. BY: LFS  
 DRAWING NO.: S-2611  
 SHEET 2 OF 7

**ASSEMBLY NOTES**

- DEADBOLT CENTER LINE LOCATED @ 49.00" FROM TOP OF DOOR PANEL.
- LOCK CENTER LINE LOCATED @ 61.875" FROM TOP OF DOOR PANEL.
- HINGES (4) LOCATED @ 8.5", 34.5", 60.5" AND 86.5" FROM TOP OF DOOR PANEL TO CENTER LINE OF HINGE. (SEE DETAIL "A" TOP HINGE & DETAIL "B" LOWER HINGES SHEET 4 OF 7 FOR HINGE ANCHORING)
- ASTRAGAL ATTACHED WITH (14) #8 X 1" PFH DRYWALL SCREWS, (2) @ 2.5", (1) @ 3.5", (1) @ 10.375", (1) @ 18.375", (1) @ 26.25", (1) @ 34.25", (1) @ 44.25", (2) @ 77.25".
- THE BOXED SIDELITES ARE ATTACHED TO THE DOOR JAMBS UTILIZING (6) #10 X 2.0" PFH WOOD SCREWS LOCATED 6.0" FROM THE TOP AND (5) MORE CONTINUOUS MAX. 13.625" ON CENTER.
- THE SIDELITE PANELS ARE ATTACHED TO THE JAMBS UTILIZING (8) #9 X 2.25" PFH SCREWS (4) EACH SIDE 6.0" FROM THE TOP AND BOTTOM WITH 2 MORE EQUALLY SPACED.
- 3/16" TAPCONS REQUIRE A MINIMUM 2" CLEARANCE TO MASONRY EDGES AND A MINIMUM 2-5/16" CLEARANCE TO ADJACENT TAPCONS.

Approved as complying with the Florida Building Code  
 Date: **APR 13 2006**  
 NOM: **05-130-03**  
 Division: **Final Trade Product Control**  
 By: *[Signature]*



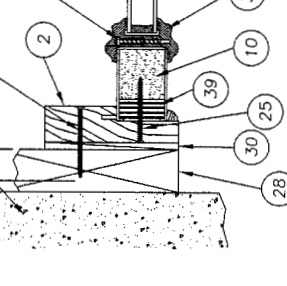
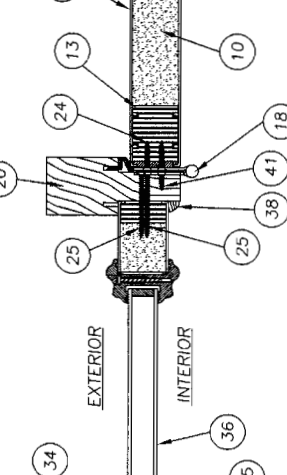
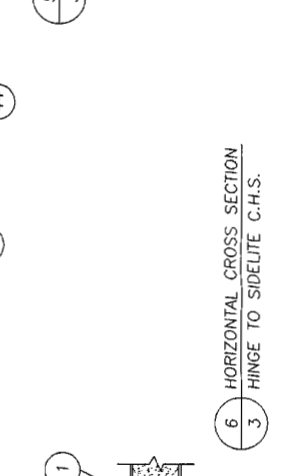
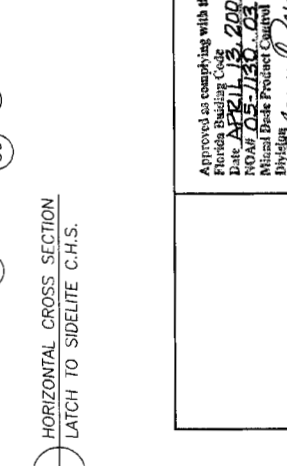
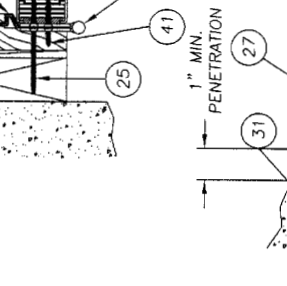
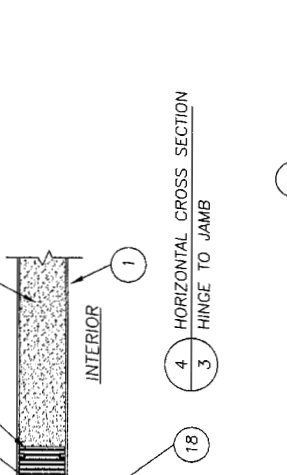
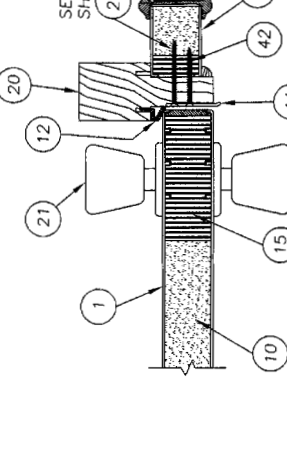
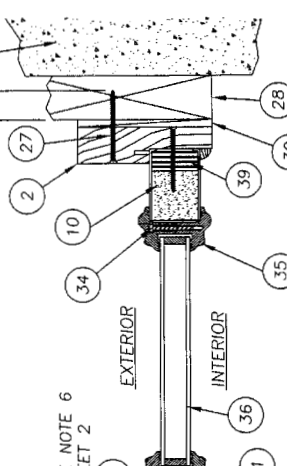
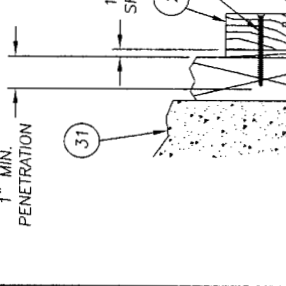
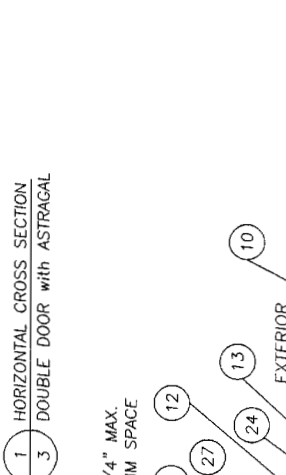
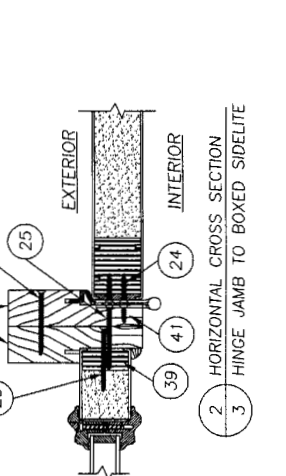
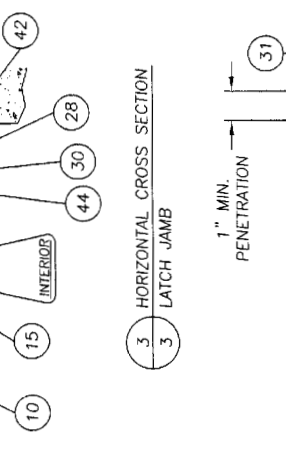
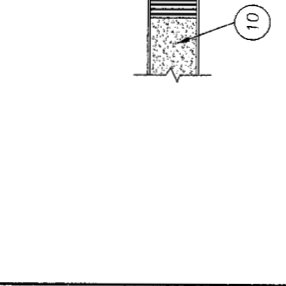
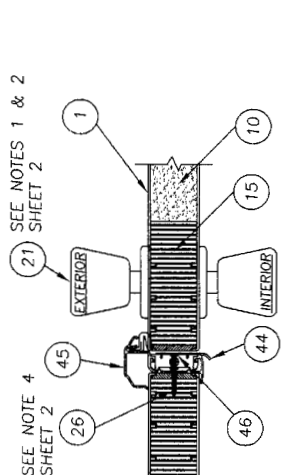
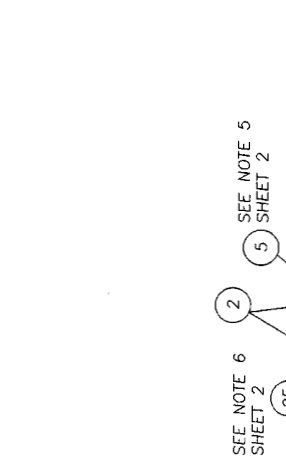
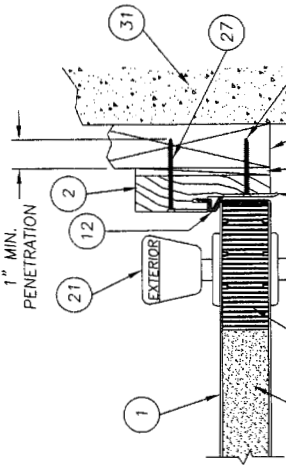
1 VERTICAL CROSS SECTION INSWING DOOR  
 2 SIDELITE

Documents Prepared By:  
**RBM**  
 BUILDING CONSULTANTS, INC.  
 P.O. Box 230 Venice, FL 33595  
 Phone No.: 813.559.9197  
 Florida Board of Professional Engineers  
 Certificate of Authorization No. 9813  
 3-17-06  
 Lynden, F. Schmidt, P.E. No. 43409

PRODUCT:  
 OPAQUE PREMIUM FIBERGLASS  
 DOORS WITH W/OUT SIDELITE(S)  
 INSWING, "NON-IMPACT"  
 PART OR ASSEMBLY:  
 HORIZONTAL CROSS SECTIONS  
 BY: WH  
 REVISIONS

NO.	DATE	REVISIONS
1	03/16/06	REVISED PER DADE LETTER

DATE: 11/14/05  
 SCALE: N.T.S.  
 DWG. BY: AEM  
 CHK. BY: LFS  
 DRAWING NO.: S-2611  
 SHEET 3 of 7



Approved as complying with the  
 Florida Building Code  
 Date: **APR 11 13 2006**  
 NOAF: **05-730-03**  
 Minimal Risk Product Control  
 By: *[Signature]*

SEE NOTE 3 SHEET 2  
 6 HORIZONTAL CROSS SECTION  
 3 HINGE TO SIDELITE C.H.S.

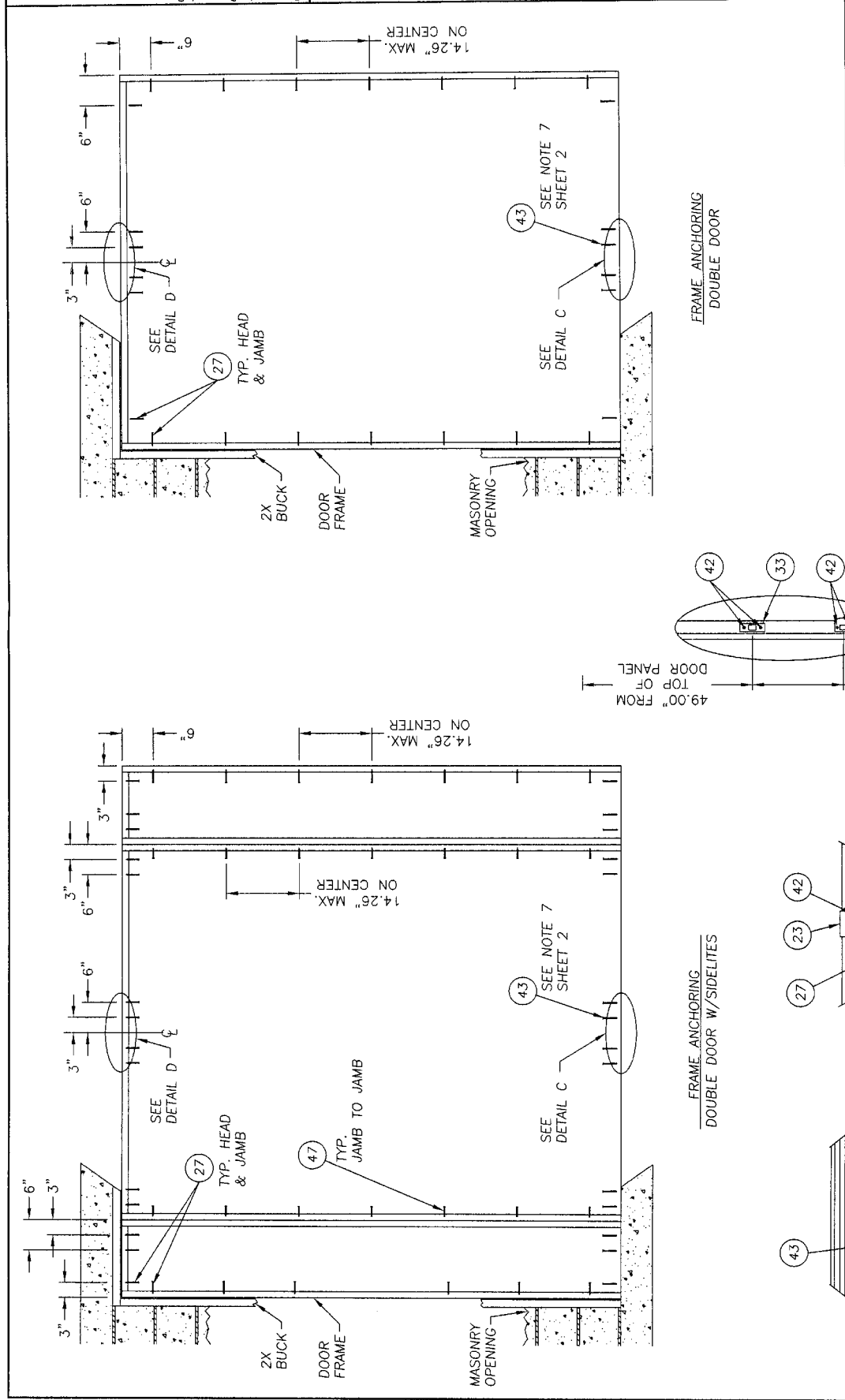


Documents Prepared By:  
**RPM** BUILDING CONSULTANTS, INC.  
 P.O. Box 230 Vero Beach, FL 33595  
 Phone No.: 813.659.9197  
 Florida Board of Professional Engineers  
 Certificate Of Authorization No. 8813  
 Lyndon, F. Schmidt, P.E., No. 43409

PRODUCT:  
 OPAQUE PREMIUM FIBERGLASS  
 DOORS WITH W/OUT SIDELITES(S)  
 INSURING "NON-IMPACT"  
 PART OR ASSEMBLY:  
 FRAME ANCHORING  
 DOUBLE & DOUBLE W/SIDELITES

REVISIONS	
NO.	DATE
1	03/16/08
REVISED PER DADE LETTER	

DATE: 11/14/05  
 SCALE: N.T.S.  
 DWG. BY: AEM  
 CHK. BY: LFS  
 DRAWING NO.: S-2611  
 SHEET 5 OF 7



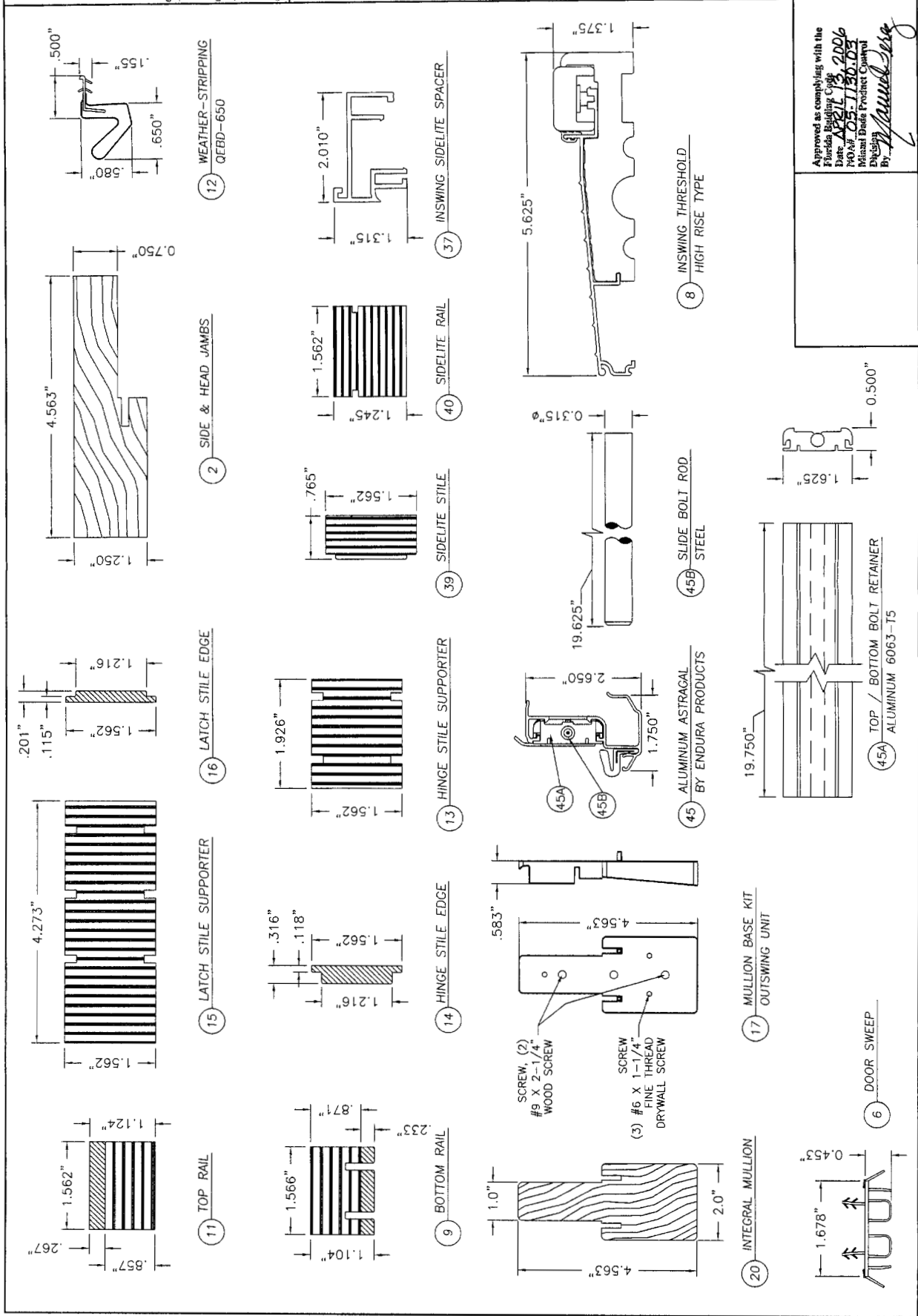
Approved as complying with the  
 Florida Building Code  
 Date: **APR 13 2006**  
 NOAH **05-130-03**  
 Miami Dade Product Control  
 Division  
 By: *Maureen Debra*

Documents Prepared By:  
**R.M.**  
 BUILDING CONSULTANTS, INC.  
 P.O. Box 230 Venice, FL 33595  
 Phone No.: 813.659.9197  
 Florida Board of Professional Engineers  
 Certificate of Authorization No. 9813  
 Lyndon, F. Schmidt, P.E. No. 43409

PRODUCT:	
OPAQUE PREMIUM FIBERGLASS DOORS WITH W/OUT SIDELITE(S) INSURING "NON-IMPACT"	
PART OR ASSEMBLY:	COMPONENTS
WH	
BY	

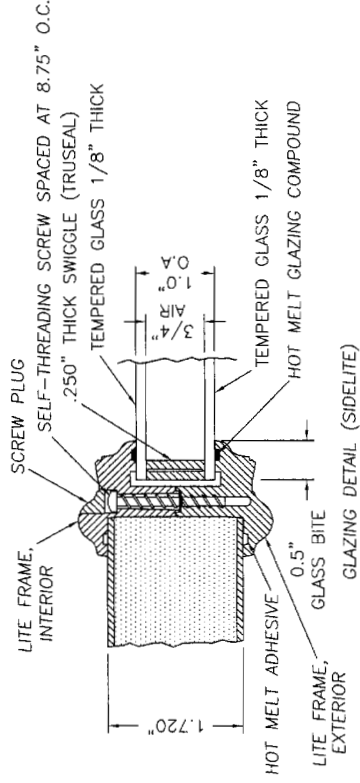
REVISIONS	
NO.	DATE
1	03/16/06
REVISED PER DATE LETTER	

DATE: 11/14/05  
 SCALE: N.T.S.  
 DWG. BY: AEM  
 CHK. BY: LFS  
 DRAWING NO.: S-2611  
 SHEET 6 OF 7



Approved as complying with the Florida Building Code  
 Date: **APRIL 13, 2006**  
 MOA: **05-1130-03**  
 Michael Bader Product Control  
 Division  
 By: *[Signature]*

ITEM	DESCRIPTION	MATERIAL
1	FIBERGLASS SKIN 0.079" MIN. THICKNESS	FIBERGLASS
2	JAMB	WOOD
3	NOT USED	-
4	NOT USED	-
5	#10 x 2" PFH WS	STEEL
6	DOOR SWEEP	PVC
7	STRIKE PLATE AT SILL	STEEL
8	INSWING THRESHOLD ALUMINUM W/ COMPOSITE SUBSTRATE	ALUM. / COMP.
9	PVC COMPOSITE & LVL BOTTOM RAIL	PVC / LVL
10	URETHANE CORE FOAMED IN PLACE 2.5 LBS. / cu.ft. DENSITY	POLYURETHANE
11	PVC COMPOSITE & LVL TOP RAIL	PVC / LVL
12	WEATHER-STRIP OE06050 O-LON	FOAM
13	LVL HINGE STILE SUPPORTER	POPLAR
14	COMPOSITE HINGE STILE EDGE	PVC
15	LVL LATCH STILE SUPPORTER	POPLAR
16	COMPOSITE LATCH STILE EDGE	PVC
17	MULLION BASE KIT (INSWING UNIT)	PVC
18	3.983" X 4.0" HINGE MIN 0.098" THICK	STEEL
19	SILL KEY	PC/ASA
20	INTEGRAL MULLION FOR CONTINUOUS HEAD & SILL ASSEMBLIES	WOOD
21	KWIKSET LATCH GRADE II	STEEL
22	KWIKSET DEADBOLT GRADE II	STEEL
23	STRIKE PLATE AT HEAD	STEEL
24	#9 X 1.0" PFHWS	STEEL
25	#9 X 2.25" PFHWS	STEEL
26	ASTRAGAL SCREW #8 X 1.0" PFH DRYWALL SCREW	STEEL
27	#8 X 2.5" PFH SMS	STEEL
28	2X BUCK	WOOD
29	LATEX CAULK	LATEX
30	MAX. 1/4" SHIM	WOOD
31	MASONRY	CONCRETE
32	3/16" X 2-3/4" TAPCON	STEEL
33	DEADBOLT STRIKE PLATE	STEEL
34	LITE FRAME SCREW #8 X 1-1/2" SELF THREADING	STEEL
35	LITE FRAME	PC/ASA
36	1" INSULATED GLASS - 1/8" TEMPERED - AIR - 1/8" TEMPERED	GLASS
37	INSWING SIDELITE SPACER	PVC
38	1/4" BEAD	WOOD
39	LVL SIDELITE STILE	POPLAR
40	LVL SIDELITE RAIL	POPLAR
41	HINGE TO JAMB #9 X 5/8" PFHWS	STEEL
42	#8 X 2" PFH WS	STEEL
43	3/16" X 2-1/4" TAPCON	STEEL
44	LATCH STRIKE PLATE	STEEL
45	ASTRAGAL BY ENDURA	ALUMINUM
46	10-32 X 5/8" MS	STEEL



**Documents Prepared By:** B.W. BUILDING CONSULTANTS, INC. P.O. Box 230 Venice FL 33595 Phone No.: 813.659.8197  
 Florida Board of Professional Engineers Certificate of Authorization No. 8813  
 3-17-06 Lyndon F. Schmidt, P.E. No. 43405

**PRODUCT:** DOORS WITH & W/O SIDELITE(S)  
**INSWING "NON-IMPACT"**  
**PART OR ASSEMBLY:** BILL OF MATERIALS & GLAZING DETAIL

**REVISIONS**

NO.	DATE	REVISIONS
1	03/16/06	REVISED PER DATE LETTER

DATE: 11/14/05  
 SCALE: N.T.S.  
 DWG. BY: AEM  
 CHK. BY: LFS  
 DRAWING NO.: S-2611  
 SHEET 7 OF 7

Approved as complying with the Florida Building Code  
 Date: **APR 11 13 2006**  
 MOAK 05-1130-03  
 Patrick Donde Product Control  
 By: *Patrick Donde*