



**BUILDING CODE COMPLIANCE OFFICE (BCCO)
PRODUCT CONTROL DIVISION**

**MIAMI-DADE COUNTY, FLORIDA
METRO-DADE FLAGLER BUILDING
140 WEST FLAGLER STREET, SUITE 1603
MIAMI, FLORIDA 33130-1563
(305) 375-2901 FAX (305) 375-2908**

NOTICE OF ACCEPTANCE (NOA)

www.buildingcodeonline.com

**Trinity Glass International
4621 192nd Street East
Tacoma, WA 98446**

SCOPE:

This NOA is being issued under the applicable rules and regulations governing the use of construction materials. The documentation submitted has been reviewed by Miami-Dade County Product Control Division and accepted by the Board of Rules and Appeals (BORA) to be used in Miami Dade County and other areas where allowed by the Authority Having Jurisdiction (AHJ).

This NOA shall not be valid after the expiration date stated below. The Miami-Dade County Product Control Division (In Miami Dade County) and/or the AHJ (in areas other than Miami Dade County) reserve the right to have this product or material tested for quality assurance purposes. If this product or material fails to perform in the accepted manner, the manufacturer will incur the expense of such testing and the AHJ may immediately revoke, modify, or suspend the use of such product or material within their jurisdiction. BORA reserves the right to revoke this acceptance, if it is determined by Miami-Dade County Product Control Division that this product or material fails to meet the requirements of the applicable building code.

This product is approved as described herein, and has been designed to comply with the Florida Building Code, including the High Velocity Hurricane Zone.

DESCRIPTION: "Premium" 6' - 8" Outswing Opaque Fiberglass Door w/ and w/o Sidelites.

APPROVAL DOCUMENT: Drawing No. **S-2579**, titled " 3'0 x 6'8 Opaque Premium Fiberglass Door Outswing 'Non-Impact' ", sheets 1 through 9 of 9, dated 08/11/05 with revision #1 dated 03/16/06, prepared by R.W. Building Consultants, Inc., signed and sealed by Lyndon F. Schmidt, P.E., bearing the Miami-Dade County Product Control Approval stamp with the Notice of Acceptance number and approval date by the Miami-Dade County Product Control Division.

MISSILE IMPACT RATING: None

LABELING: Each unit shall bear a permanent label with the manufacturer's name or logo, city, state and following statement: "Miami-Dade County Product Control Approved", unless otherwise noted herein.

RENEWAL of this NOA shall be considered after a renewal application has been filed and there has been no change in the applicable building code negatively affecting the performance of this product.

TERMINATION of this NOA will occur after the expiration date or if there has been a revision or change in the materials, use, and/or manufacture of the product or process. Misuse of this NOA as an endorsement of any product, for sales, advertising or any other purposes shall automatically terminate this NOA. Failure to comply with any section of this NOA shall be cause for termination and removal of NOA.

ADVERTISEMENT: The NOA number preceded by the words Miami-Dade County, Florida, and followed by the expiration date may be displayed in advertising literature. If any portion of the NOA is displayed, then it shall be done in its entirety.

INSPECTION: A copy of this entire NOA shall be provided to the user by the manufacturer or its distributors and shall be available for inspection at the job site at the request of the Building Official. This NOA consists of this page 1 and evidence page E-1, as well as approval document mentioned above. The submitted documentation was reviewed by **Manuel Perez, P.E.**



**NOA No 05-0819.10
Expiration Date: April 27, 2011
Approval Date: April 27, 2006**

Trinity Glass International

NOTICE OF ACCEPTANCE: EVIDENCE SUBMITTED

A. DRAWINGS

1. Manufacturer's die drawings and sections.
2. Drawing No **S-2579**, Sheets 1 through 9 of 9, titled " 3'0 x 6'8 Opaque Premium Fiberglass Doors Outswing 'Non-Impact' ", dated 08/11/05 with revision #1 on 03/16/06, prepared by RW Building Consultants, Inc., signed and sealed by Lyndon F. Schmidt, P.E.

B. TESTS

1. Test reports on 1) Air Infiltration Test, per FBC, TAS 202-94
2) Uniform Static Air Pressure Test, Loading per FBC TAS 202-94
3) Water Resistance Test, per FBC, TAS 202-94
4) Forced Entry Test, per FBC 2411 3.2.1 TAS 202-94
along with marked-up drawings and installation diagram of Opaque Premium Fiberglass Doors with & w-out Sidelite(s) Outswing "Non-Impact, prepared by Testing Evaluation Laboratories, Inc., Test Report No. **TEL-05-0813-1**, dated 08/13/05, signed and sealed by Wendell W. Haney.

C. CALCULATIONS

1. Anchor verification calculations complying with FBC 2004, dated 11/21/05, prepared by RW Building Consultants, Inc., signed and sealed by Lyndon F. Schmidt, P.E.
Complies with ASTM E1300-98

D. QUALITY ASSURANCE

1. Miami Dade Building Code Compliance Office (BCCO).

E. MATERIAL CERTIFICATIONS


1. Test Report No. **ETC-05-781-17122.0**, prepared by ETC Laboratories., issued to Trinity Glass International, dated 10/19/05, Polyurethane Foam, tested per **ASTM D2843** "Self Ignition Temperature"; **ASTM E84** "Flame Spread Index", **ASTM E84** "Smoke Developed Index", signed and sealed by Joseph Labora Doldan, P.E.
2. Notice of Acceptance No. **05-1206.01** issued to Trinity Glass International, for their Unfinished Fiberglass Door Skin approved on 03/02/06 and expiring on 03/02/11.
3. Notice of Acceptance No. **02-0429.11** issued to Trinity Glass International, for their Trinity Lite Frame approved on 07/3/02 and expiring on 07/03/07.

F. STATEMENTS

1. Statement letter of conformance and no financial interest, dated 08/17/05, signed Lyndon F. Schmidt, P.E.
2. Statement letter of no financial interest, dated 07/21/05, signed by Andrew Na.

G. OTHER

1. None.


Manuel Perez, P.E.
Product Control Examiner
NOA No. **05-0819.10**
Expiration Date: April 27, 2011
Approval Date: April 27, 2006



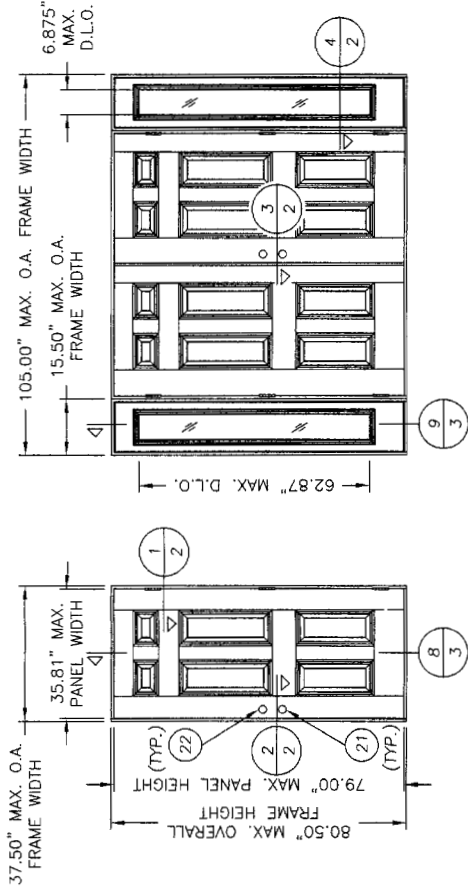
INTERNATIONAL
4621 192nd STREET EAST TACOMA, WA 98446
TEL: 253-875-7300 FAX: 253-875-7301

3'0 X 6'8 OPAQUE PREMIUM FIBERGLASS DOOR OUTSWING "NON-IMPACT"

GENERAL NOTES

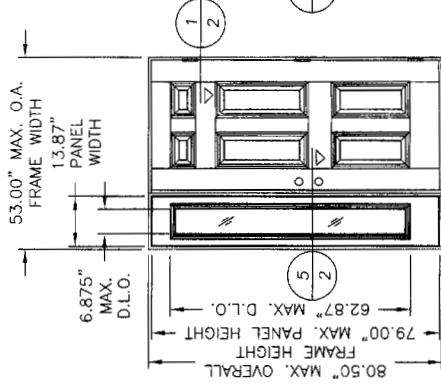
- THIS PRODUCT HAS BEEN EVALUATED AND IS IN COMPLIANCE WITH THE FLORIDA BUILDING CODE INCLUDING THE "HIGH VELOCITY HURRICANE ZONE".
- PRODUCT ANCHORS SHALL BE AS LISTED AND SPACED AS SHOWN ON DETAILS. ANCHOR EMBEDMENT TO BASE MATERIAL SHALL BE BEYOND WALL DRESSING OR STUCCO.
- WHEN USED IN THE "HIGH VELOCITY HURRICANE ZONE" THIS PRODUCT IS REQUIRED TO BE PROTECTED WITH AN IMPACT RESISTANT COVERING THAT COMPLIES WITH SECTION 1626 OF THE FLORIDA BUILDING CODE.
- WHEN USED IN AREAS OUTSIDE OF THE "HVHZ" REQUIRING WIND-BORNE DEBRIS PROTECTION THIS PRODUCT IS REQUIRED TO BE PROTECTED WITH AN IMPACT RESISTANT COVERING THAT COMPLIES WITH SECTION 1609.1.4 OF THE FLORIDA BUILDING CODE.
- FOR 2X STUD FRAMING CONSTRUCTION, THE ANCHORING OF THESE UNITS SHALL BE THE SAME AS THAT SHOWN FOR 2X BUCK MASONRY CONSTRUCTION.
- CONDITIONS NOT COVERED BY THIS DRAWING ARE SUBJECT TO FURTHER ENGINEERING ANALYSIS.
- WOOD BUCKS BY OTHERS, MUST BE ANCHORED PROPERLY TO TRANSFER LOADS TO STRUCTURE AND TO BE REVIEWED BY BUILDING OFFICIAL.
- FOR DESIGN PRESSURE RATING SEE CHART UNDER EACH PRODUCT ELEVATION.
- THIS PRODUCT MEETS THE WATER REQUIREMENTS FOR HIGH VELOCITY HURRICANE ZONES.

TABLE OF CONTENTS	
1	TYPICAL ELEVATION, DESIGN PRESSURES & GENERAL NOTES
2	HORIZONTAL & VERTICAL CROSS SECTIONS
3	FRAME ANCHORING
4	FRAME ANCHORING
5	FRAME ANCHORING
6	FRAME ANCHORING
7	FRAME ANCHORING & GLAZING DETAIL
8	COMPONENTS
9	BILL OF MATERIALS & COMPONENTS



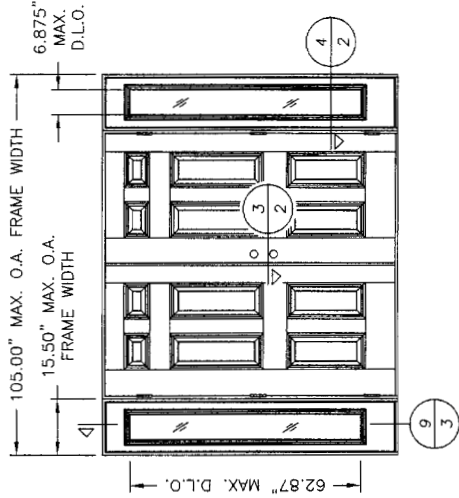
SINGLE DOOR

DESIGN PRESSURE (PSF)
POS. +75.0 NEG. -75.0



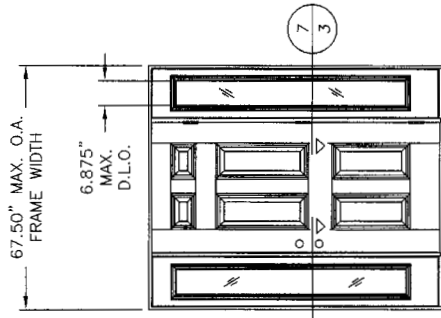
SINGLE DOOR W/SIDELITE
BOXED/CONTINUOUS HEAD & SILL

DESIGN PRESSURE (PSF)
C.H.S. POS. +43.0 NEG. -43.0
BOXED POS. +55.0 NEG. -55.0



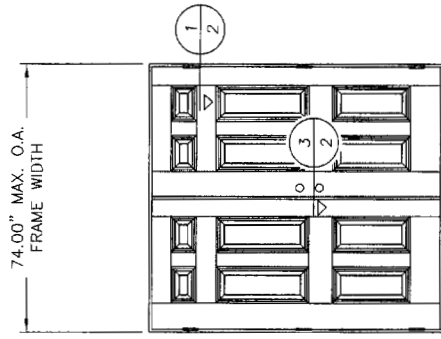
DOUBLE DOOR W/SIDELITES BOXED

DESIGN PRESSURE (PSF)
POS. +55.0 NEG. -55.0



SINGLE DOOR W/SIDELITES
BOXED/CONTINUOUS HEAD & SILL

DESIGN PRESSURE (PSF)
C.H.S. POS. +43.0 NEG. -43.0
BOXED POS. +55.0 NEG. -55.0



DOUBLE DOOR

DESIGN PRESSURE (PSF)
POS. +55.0 NEG. -55.0

Approved as complying with the Florida Building Code
Date: April 27, 2006
Miami Base Product Control
NO# 05-019-10
Division
By: [Signature]
8-17-05

Documents Prepared By:
RPM BUILDING CONSULTANTS, INC.
P.O. Box 230 Venice FL 33595
Phone No.: 813.659.9197
Florida Board of Professional Engineers
Certificate of Authorization No. 9813
Lydon F. Schmidt, P.E. No. 43409

PRODUCT:
TRINITY GLASS INTERNATIONAL
3'0 X 6'8 OPAQUE PREMIUM
OUTSWING FIBERGLASS DOOR
PART OR ASSEMBLY:
TYPICAL ELEVATION, DESIGN
PRESSURES & GENERAL NOTES

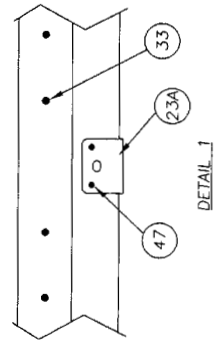
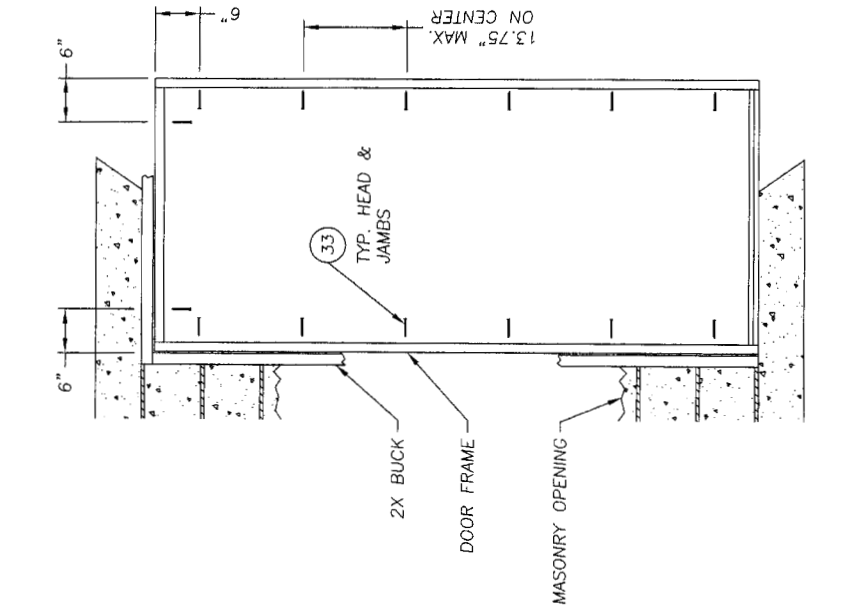
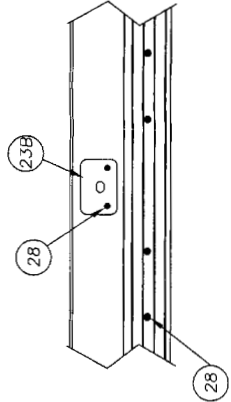
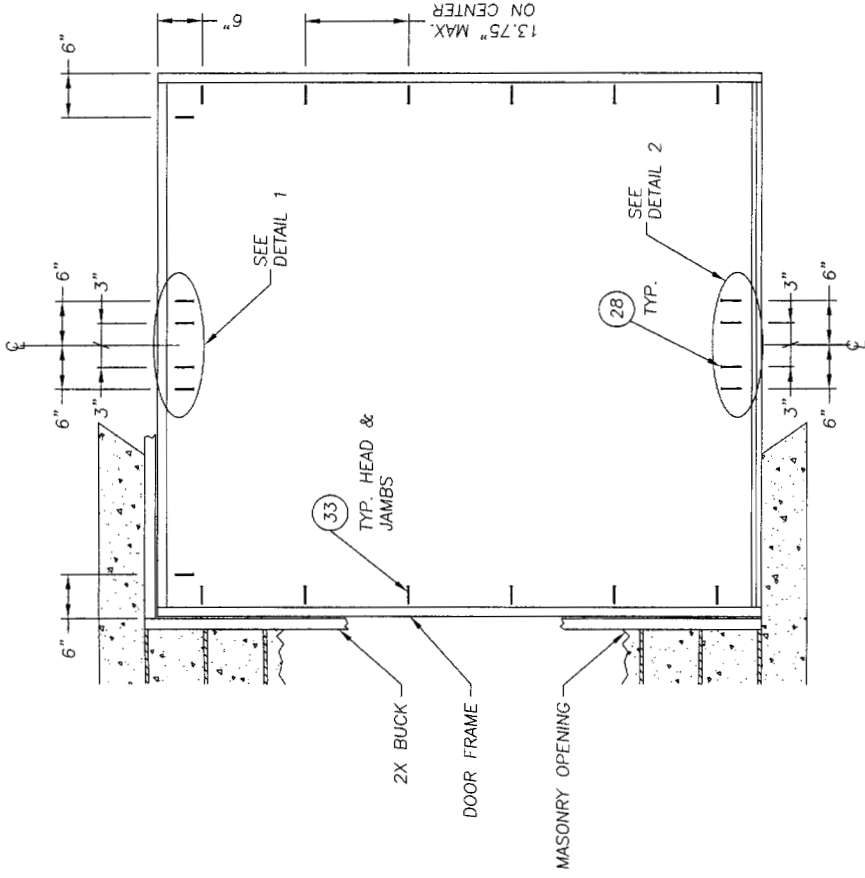
NO.	DATE	BY

REVISIONS

DATE: 08/11/05
SCALE: N.T.S.
DWG. BY: EW
CHK. BY: LFS
DRAWING NO.: S-2579
SHEET 1 OF 9

BUILDING CONSULTANTS, INC. P.O. Box 230 Vero Beach, FL 33595 Phone No.: 813.659.9197 Certificate of Professional Engineers No. 9813 Lyndon F. Schmidt, P.E. No. 43409		DOCUMENTS PREPARED BY:	
PRODUCT: TRINITY GLASS INTERNATIONAL 3'0" X 6'8" OPAQUE PREMIUM OUT SWING FIBERGLASS DOOR		PART OR ASSEMBLY: FRAME ANCHORING	
REVISIONS		NO. DATE	
DATE: 8/11/05		SCALE: N.T.S.	
DWG. BY: EW		CHK. BY: LFS	
DRAWING NO.: S-2579		SHEET 4 OF 9	

Approved as complying with the
 Florida Building Code
 Date: APRIL 24, 2006
 No. 05-0819-10
 Licensed Design Professional
 By: *[Signature]*

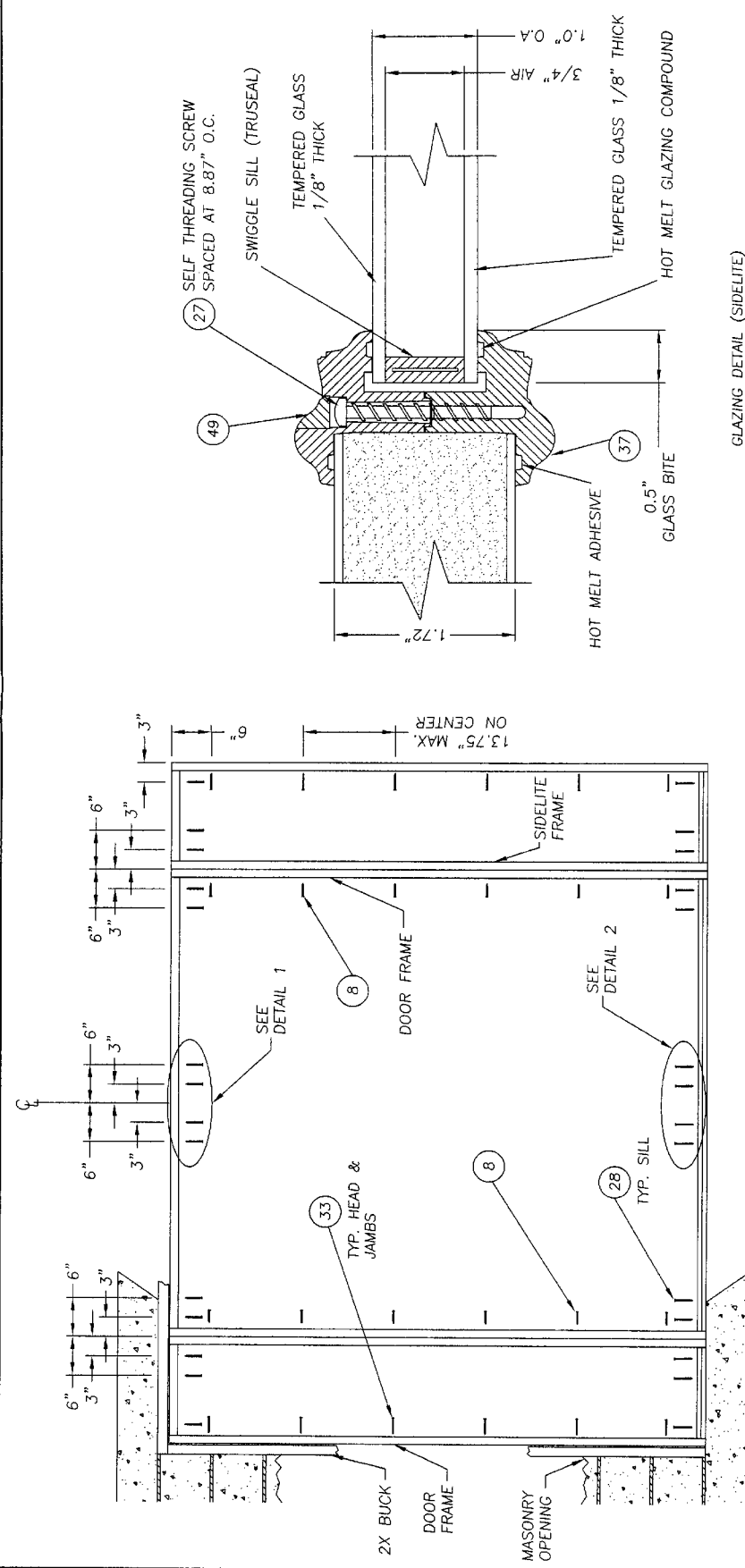


BUILDING CONSULTANTS, INC.
 P.O. Box 230 Venice FL 33595
 Phone No.: 813.659.9197
 Florida Board of Professional Engineers
 Certificate Of Authorization No. 9813
 Lyndon F. Schmidt, P.E. No. 43409

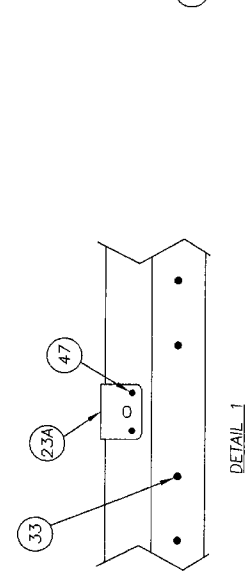
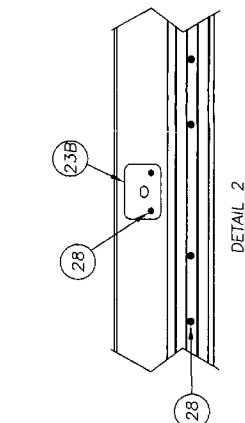
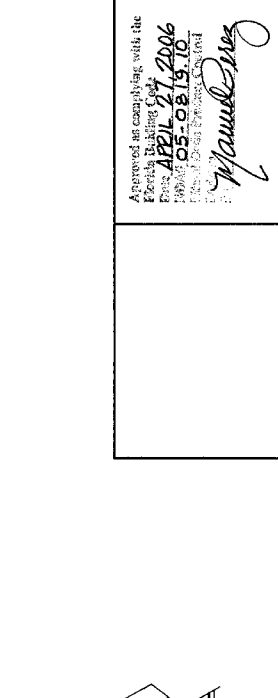
PRODUCT: TRINITY GLASS INTERNATIONAL
 3.0 X 6.8 OPAQUE PREMIUM
 QUT SWING FIBERGLASS DOOR
 PART OR ASSEMBLY:
 FRAME ANCHORING &
 GLAZING DETAIL

NO.	DATE	REVISIONS

DATE: 8/11/05
 SCALE: N.T.S.
 DWG. BY: EW
 CHK. BY: LFS
 DRAWING NO.: S-2579
 SHEET 7 of 9



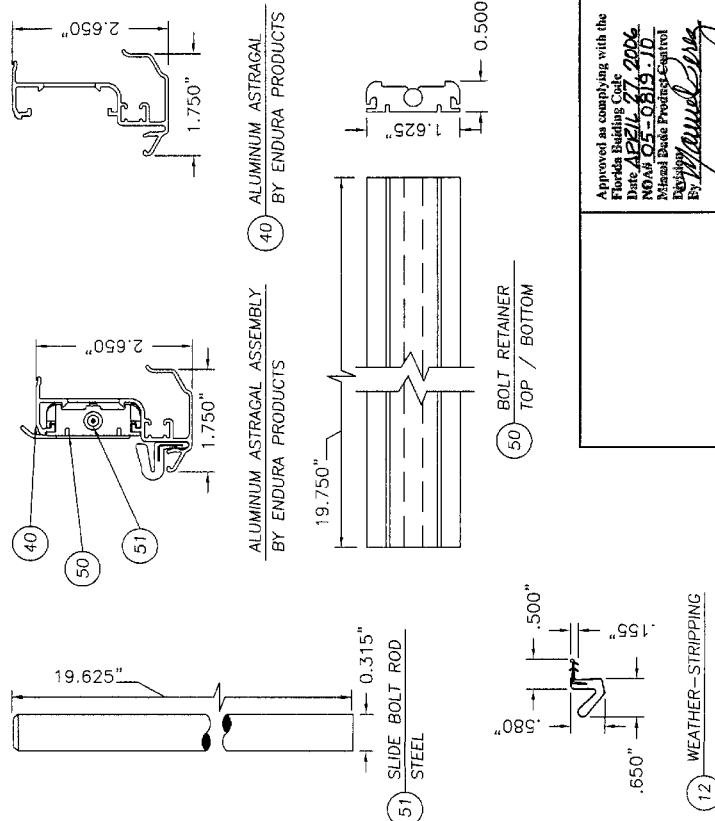
DOOR FRAME TO BUCK ANCHORING
 DESIGN PRESSURE +/-55.0 PSF



Approved as capacity with the
 Florida Building Code
 DATE: APRIL 27, 2006
 BY: 05-0819-10
 Florida Board of Professional Engineers
 Lyndon F. Schmidt, P.E.

ITEM	DESCRIPTION	MATERIAL
1	FIBERGLASS SKIN 0.079" MIN. THICKNESS	FIBERGLASS
2	SIDELITE JAMB FINGER-JOINT PINE	WOOD
3	HINGE JAMB - FINGER-JOINT PINE	WOOD
4	HEAD JAMB FINGER-JOINT PINE	WOOD
5	OUT-SWING THRESHOLD ALUMINUM W/ COMPOSITE SUBSTRATE	ALUM./COMP.
6	LATCH JAMB FINGER-JOINT PINE	WOOD
7	MULLION	WOOD
8	#10 X 2.0" PFHWS	STEEL
9	PVC/LVL/COMPOSITE BOTTOM RAIL	PVC/LVL
10	DOOR PANEL CORE FOAMED IN PLACE	POLYURETHANE
11	PVC/LVL/COMPOSITE TOP RAIL	PVC/LVL
12	WEATHER-STRIP QEBD650 Q-LON	FOAM
13	LVL HINGE STILE SUPPORTER	POPLAR
14	COMPOSITE HINGE STILE EDGE	PVC
15	LVL LOCK STILE SUPPORTER	POPLAR
16	COMPOSITE LOCK STILE EDGE	PVC
17	LVL LOCK BLOCK	POPLAR
18	3.983" X 4.0" HINGE MIN 0.098" THICK	STEEL
19	SILL KEY	PC/ASA
20	JAMB GUARD	STEEL
21	KWIKSET LATCH GRADE II	STEEL
22	KWIKSET DEADBOLT GRADE II	STEEL
23	STRIKE PLATE @ LATCH	STEEL
23A	STRIKE PLATE @ HEAD	STEEL
23B	STRIKE PLATE @ SILL	STEEL
24	HINGE TO JAMB SCREW #9 X 5/8" PFHWS (3 REQUIRED EACH HINGE)	STEEL
25	HINGE TO BUCK SCREW #9 X 2-1/4" PFHWS (1 REQUIRED EACH HINGE)	STEEL
26	HINGE TO DOOR SCREW #9 X 1.0" PFHWS (4 REQUIRED EACH HINGE)	STEEL
27	LITE FRAME SCREW #8 X 1-1/2" SELF THREADING	STEEL
28	3/16" x 2-3/4" TAPCON	STEEL
29	#10-32 X 5/8" MACHINE SCREW	STEEL
30	NOT USED	-
31	NOT USED	-
32	NOT USED	-
33	JAMB/SILL TO BUCK SCREW #10 X 2.5" PFHWS	STEEL
34	2X BUCK	WOOD
35	LATEX CAULK	LATEX
36	MAX. 1/4" SHIM	WOOD

37	LITE FRAME	PC/ASA
38	ASTRAGAL SCREW #8 X 1"	STEEL
39	#9 X 2-1/4" SELF DRILLING SCREW	STEEL
40	ASTRAGAL	ALUM.
41	1" INSULATED GLASS - 1/8" TEMPERED - AIR - 1/8" TEMPERED GLASS	GLASS
42	NOT USED	-
43	OUTSWING SIDELITE SPACER	PVC
44	BEAD 1/4" ROUND	WOOD
45	LVL SIDELITE STILE	POPLAR
46	LVL SIDELITE RAIL	POPLAR
47	#8 X 2-1/2" PFH WS	STEEL
48	MASONRY	CONC.
49	SCREW PLUG	PC/ASA
50	BOLT RETAINER TOP / BOTTOM	PVC
51	SLIDE BOLT ROD	STEEL



Documents Prepared By: **RM BUILDING CONSULTANTS, INC.**
 P.O. Box 230 Venice, FL 33595
 Phone No.: 813.659.9197
 Florida Board of Professional Engineers
 Certificate Of Authorization No. 9813
 6/17/05
 Lyndon F. Schmidt, P.E. No. 43409

TRINITY GLASS INTERNATIONAL
 3.0 X 6.8 OPAQUE PREMIUM
 OUT SWING FIBERGLASS DOOR
 PART OR ASSEMBLY: _____
 BILL OF MATERIALS & _____
 BY: _____

REVISIONS
 NO. _____ DATE _____

DATE: 8/11/05
 SCALE: N.T.S.
 DWG. BY: EW
 CHK. BY: LFS
 DRAWING NO.: S-2579
 SHEET 9 OF 9

Approved as complying with the
 Florida Building Code
 Date: **APR 11 2006**
 No. of: **03-0819-10**
 Request State Printing Control
 By: *[Signature]*