



4621 192nd STREET EAST TACOMA, WA 98446  
 TEL: 253-875-7300 FAX: 253-875-7301

## PREMIUM OPAQUE FIBERGLASS DOOR OUTSWING "IMPACT"

### GENERAL NOTES

1. This product has been evaluated and is in compliance with the 2007 Florida Building Code (FBC) structural requirements including the "High Velocity Hurricane Zone" (HVHZ).
2. Product anchors shall be as listed and spaced as shown on details. Anchor embedment to base material shall be beyond wall dressing or stucco.
3. When used in the "HVHZ" this product complies with section 1626 of the 2007 FBC and does not require an impact resistant covering.
4. When used in areas requiring wind borne debris protection this product complies with Section 1609.1.2 of the 2007 FBC and does not need to be protected with an impact resistant covering. This product meets missile level "D" and includes Wind Zone 4 as defined in ASTM E1996.
5. For 2x stud framing construction, anchoring of these units shall be the same as that shown for 2x buck masonry construction.
6. Site conditions that deviate from the details of this drawing require further engineering analysis by a licensed engineer or registered architect.
7. This product meets water infiltration requirements for "HVHZ".

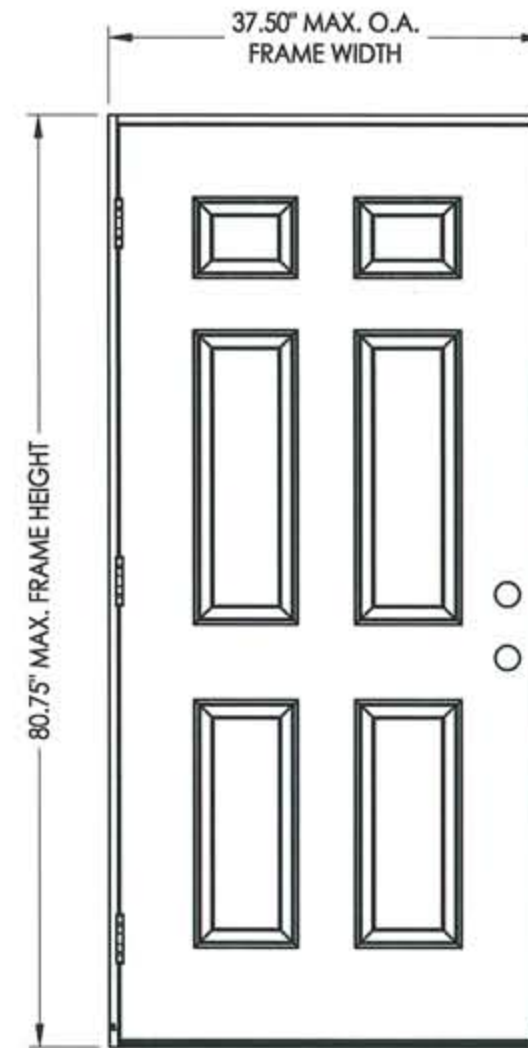


TABLE OF CONTENTS	
SHEET #	DESCRIPTION
1	Typical elevations, design pressures & general notes
2	Door panel construction details
3	Horizontal & vertical cross sections
4	Horizontal & vertical cross sections
5	Horizontal & vertical cross sections
6	Horizontal & vertical cross sections
7	Buck and frame anchoring - 2X buck masonry construction
8	Frame anchoring - 1X buck masonry construction
9	Components
10	Bill of materials

SWING	MAX. FRAME DIMENSION	DESIGN PRESSURE (PSF)	
		POSITIVE	NEGATIVE
OUTSWING	37.50" x 80.75"	+65.0	-65.0

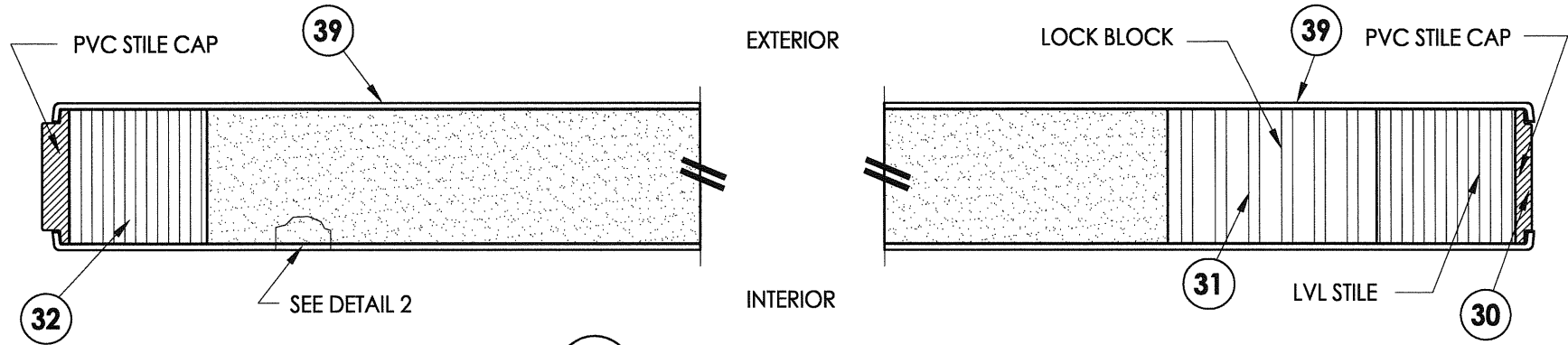
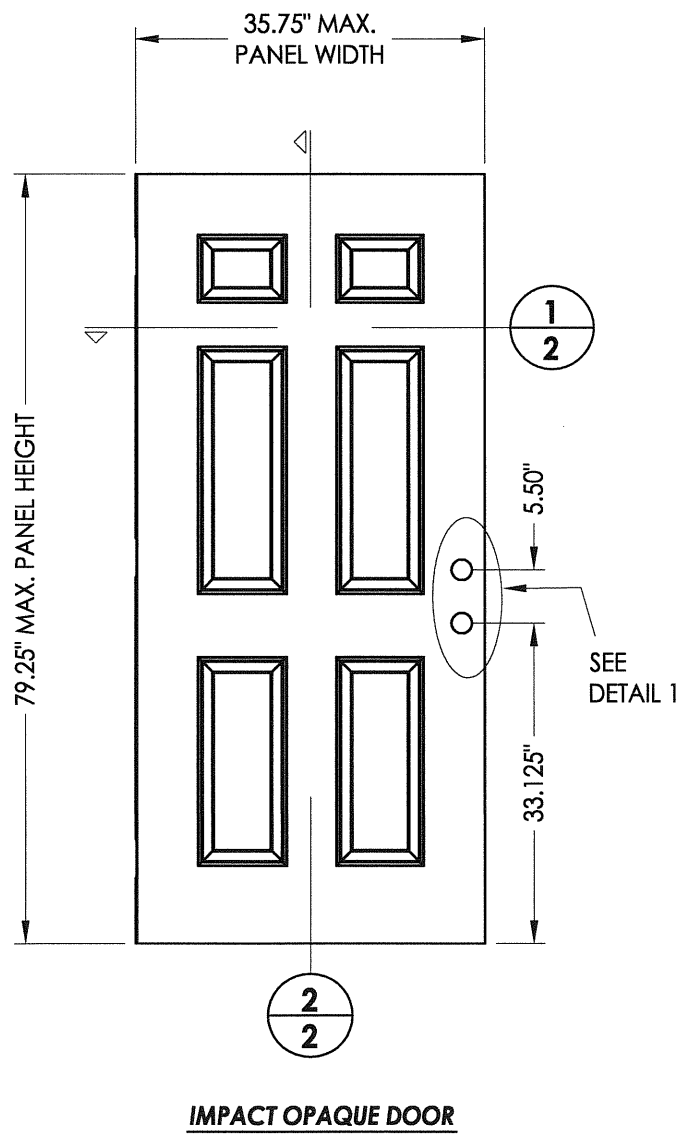
Documents Prepared By:

**RW** BUILDING CONSULTANTS, INC.  
 P.O. Box 230 Valrico FL 33595  
 Phone No.: 813.659.9197  
 Florida Board of Professional Engineers  
 Certificate Of Authorization No. 9813  
*LF-52117.09*  
 Lyndon F. Schmidt, P.E. No. 43408

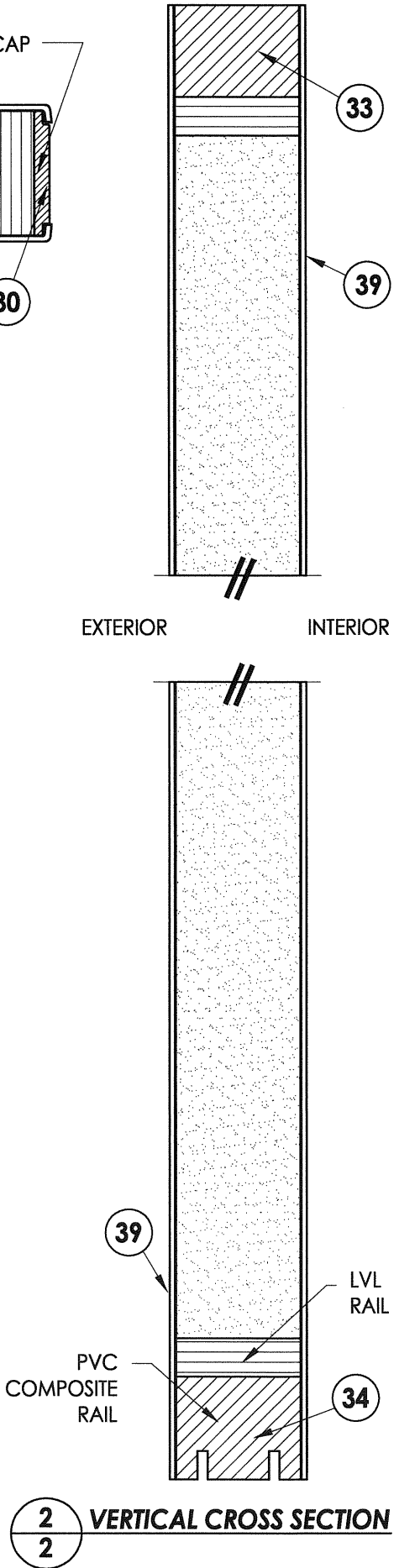
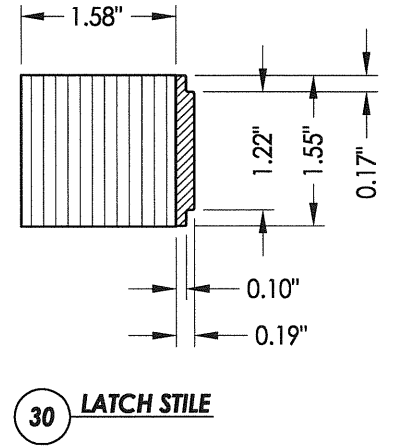
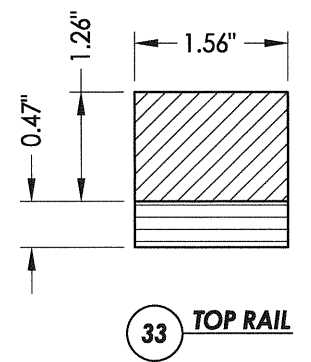
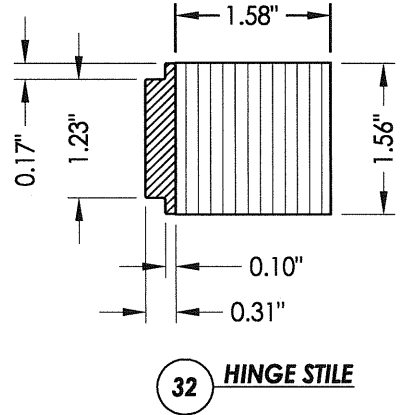
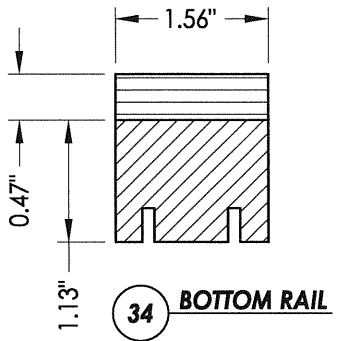
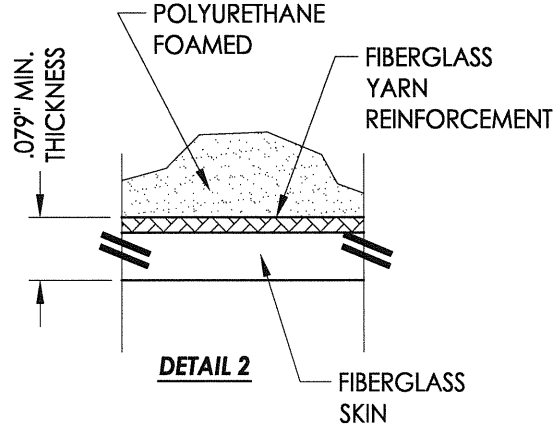
PRODUCT: TRINITY GLASS INT'L  
 6'8" PREMIUM OPAQUE  
 PART OR ASSEMBLY:  
 TYPICAL ELEVATION, DESIGN  
 PRESSURES & GENERAL NOTES

REVISIONS	
NO.	DATE
1.	12/23/08
DWS	BY
DIRECT TO MASONRY ANCHORING	

DATE: 4/29/08  
 SCALE: N.T.S.  
 DWG. BY: DWS  
 CHK. BY: LFS  
 DRAWING NO.:  
 FL-7964.1  
 SHEET 1 OF 10



1  
2 **HORIZONTAL CROSS SECTION**



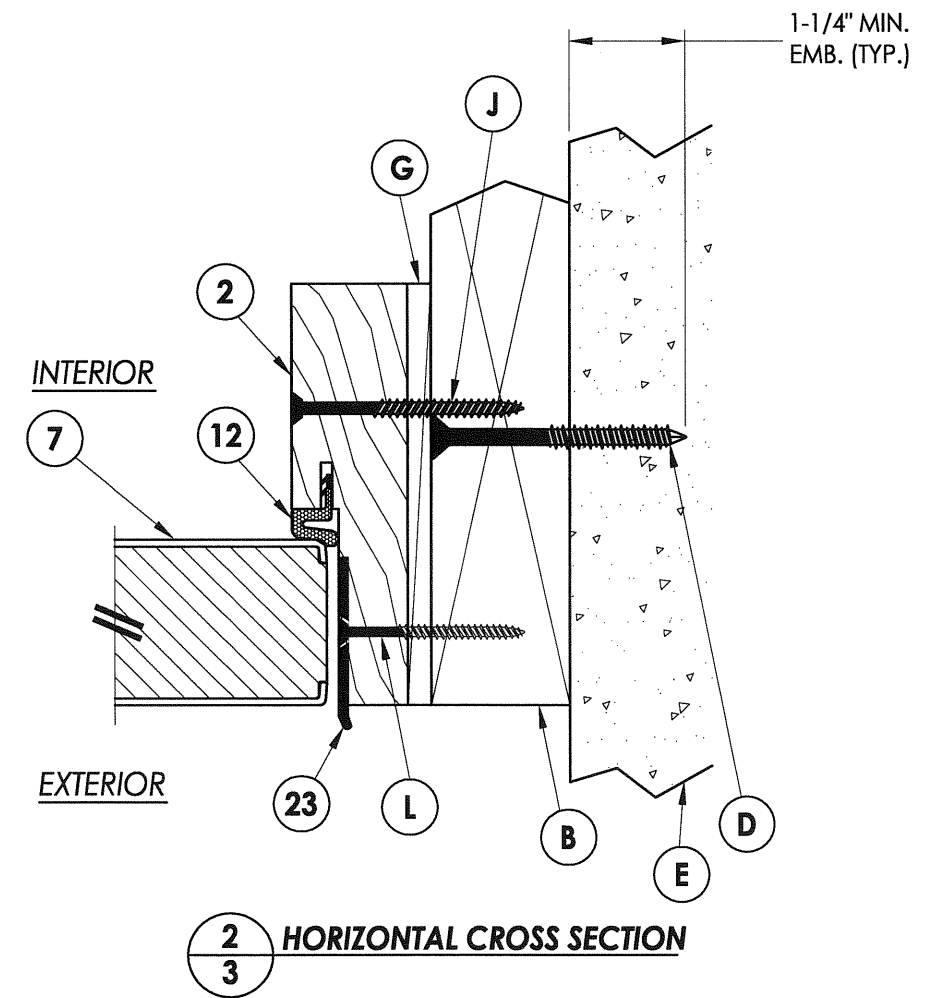
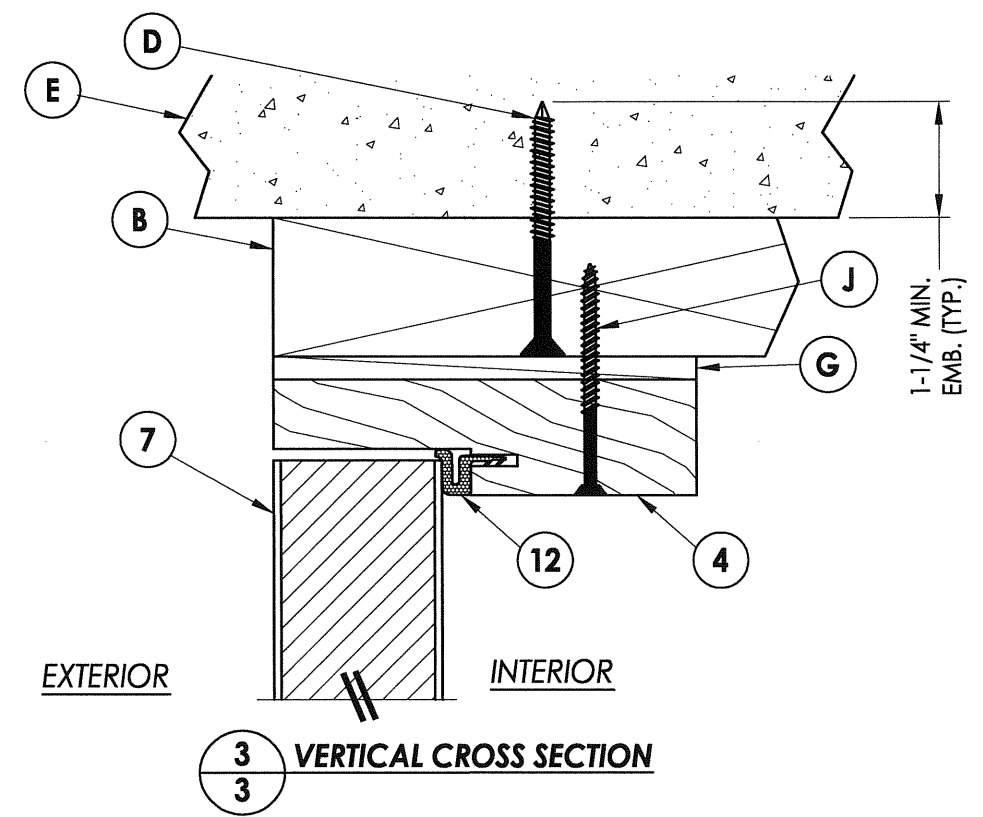
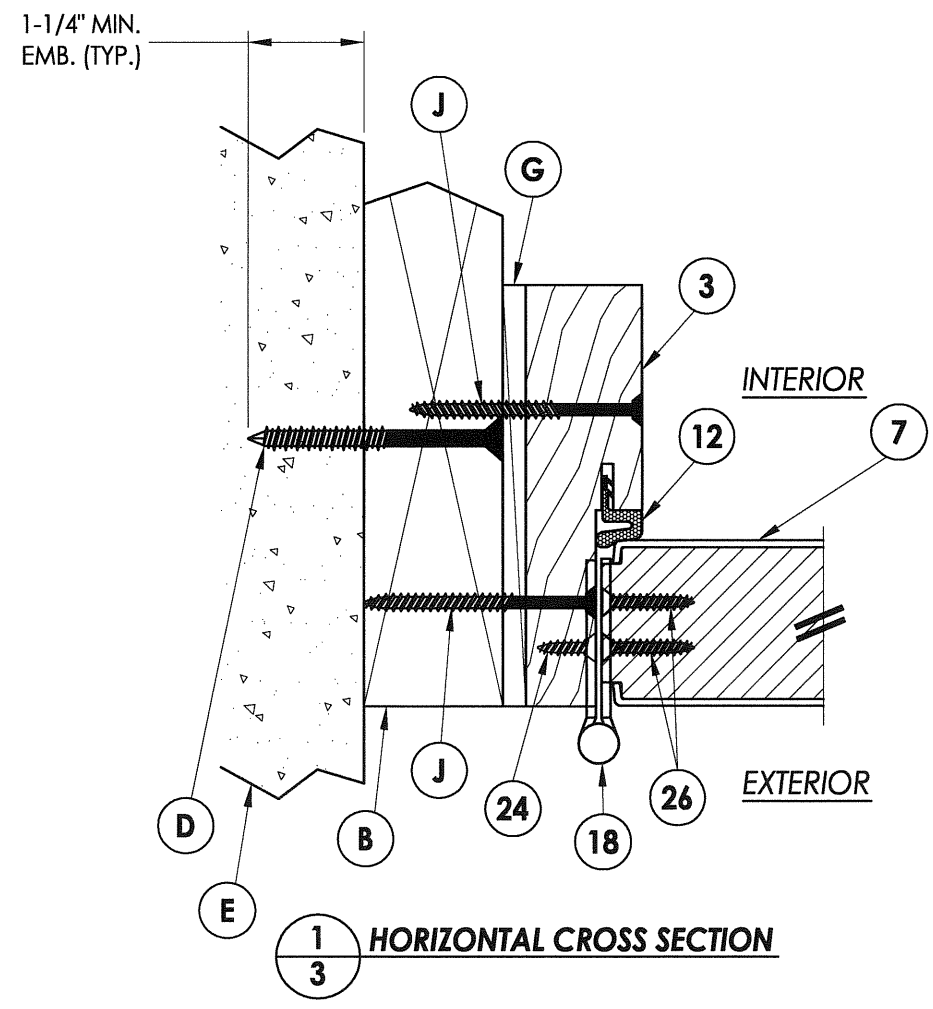
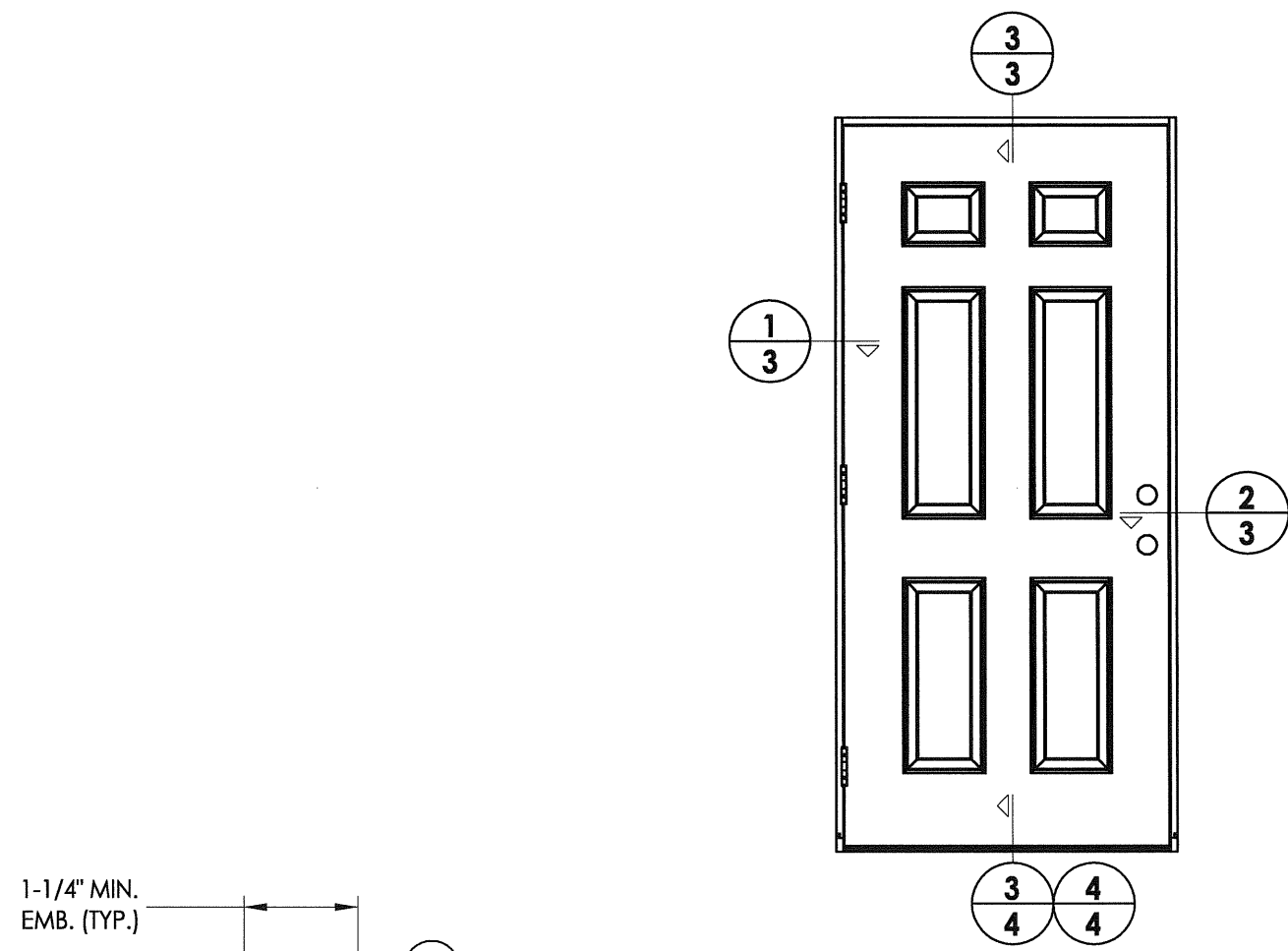
2  
2 **VERTICAL CROSS SECTION**

Documents Prepared By: **RW** BUILDING CONSULTANTS, INC.  
P.O. Box 230 Valrico FL 33595  
Phone No.: 813.659.9197

Florida Board of Professional Engineers  
Certificate Of Authorization No. 9813  
1750 1709  
Lyndon F. Schmidt, P.E. No. 43409

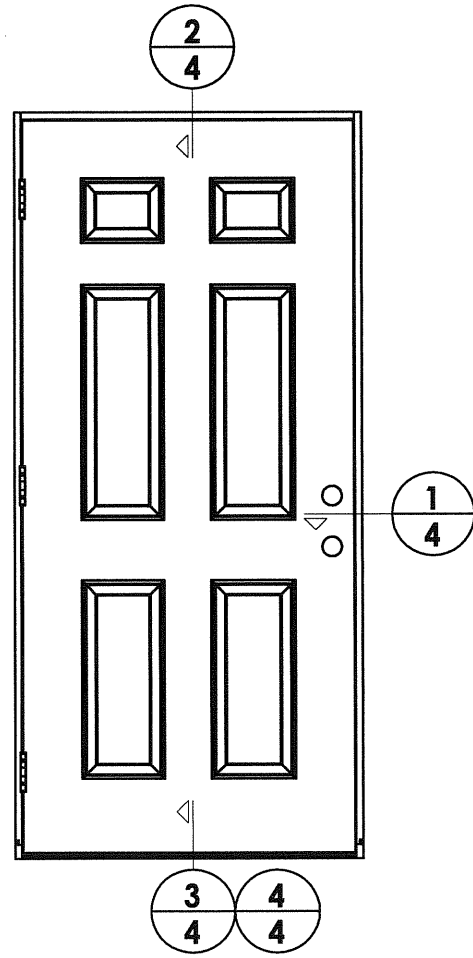
PRODUCT:	TRINITY GLASS INT'L 6.8 PREMIUM OPAQUE
PART OR ASSEMBLY:	DOOR PANEL CONSTRUCTION DETAILS
DWG. BY:	DWS
CHK. BY:	LFS
DATE:	12/23/08
NO.:	1
REVISIONS	
DATE:	4/29/08
SCALE:	N.T.S.
DWG. BY:	DWS
CHK. BY:	LFS
DRAWING NO.:	FL-7964.1
SHEET	2 OF 10

© 2008 R.W. BUILDING CONSULTANTS INC.

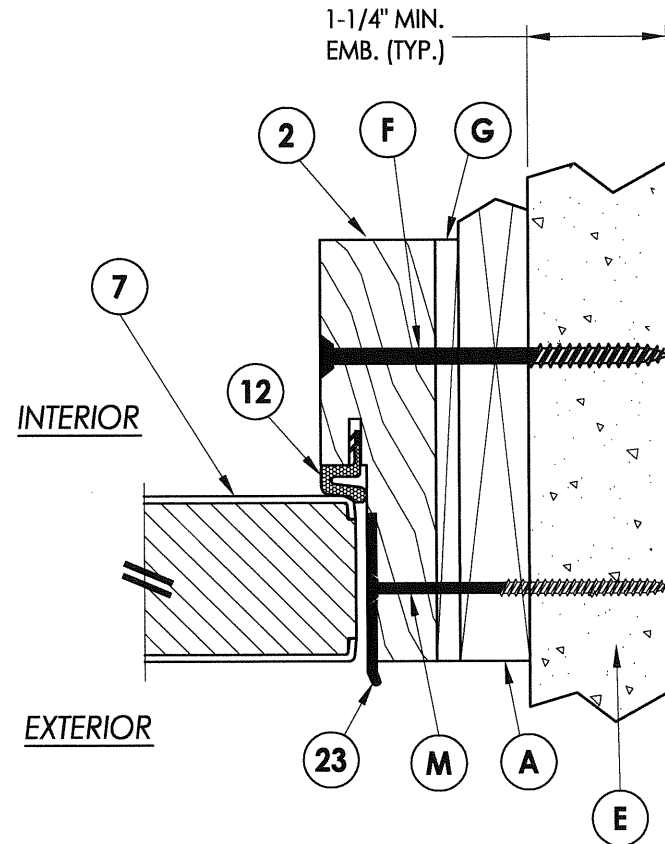


Documents Prepared By:		RW BUILDING CONSULTANTS, INC. P.O. Box 230 Valrico FL 33595 Phone No.: 813.659.9197	
PRODUCT:		TRINITY GLASS INT'L 6/8 PREMIUM OPAQUE	
PART OR ASSEMBLY:		HORIZONTAL & VERTICAL CROSS SECTIONS	
NO.	DATE	DWS	BY
1.	12/23/08	DIRECT TO MASONRY ANCHORING	
REVISIONS			
DATE: 4/29/08			
SCALE: N.T.S.			
DWG. BY: DWS			
CHK. BY: LFS			
DRAWING NO.: FL-7964.1			
SHEET 3 OF 10			

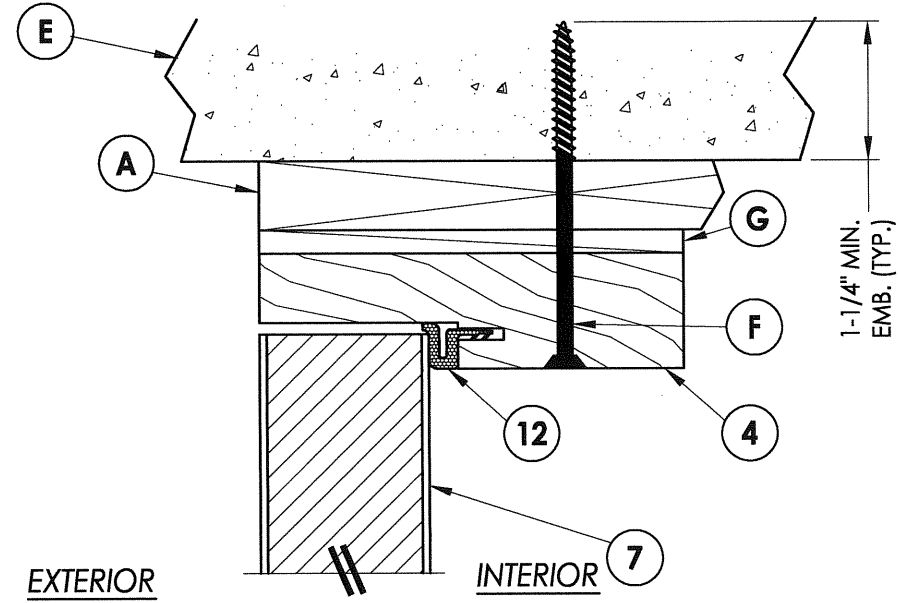
R:\A - Projects\Project Folders\Proj 1001-1100\pf1089\D. RWBC Drawings\FL-7964\FL-7964.1-7.DWG, Model



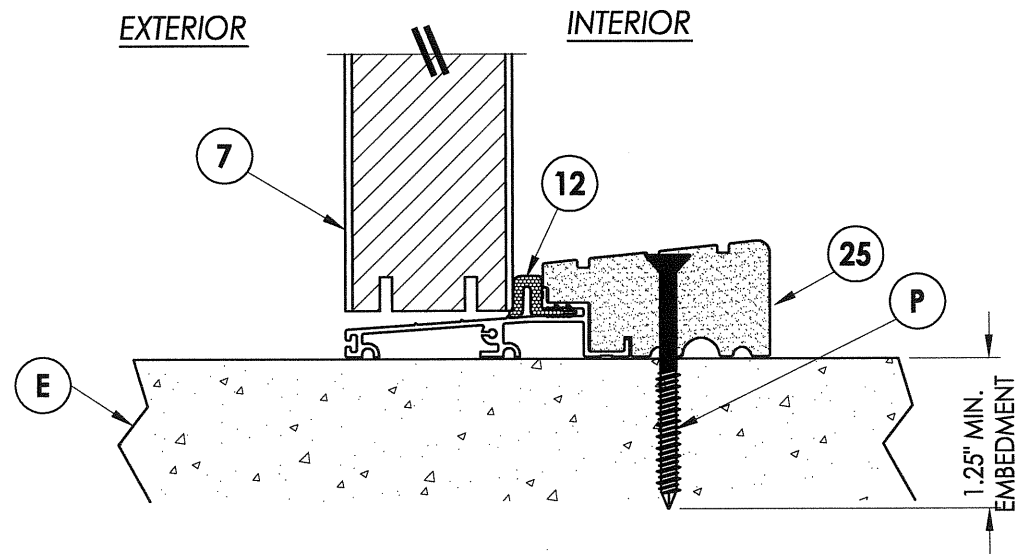
**1**  
**4** **HORIZONTAL CROSS SECTION**  
Shown w/1X sub-buck substituting concrete screws for wood screws per Section 1714.5.4.2 of the FBC



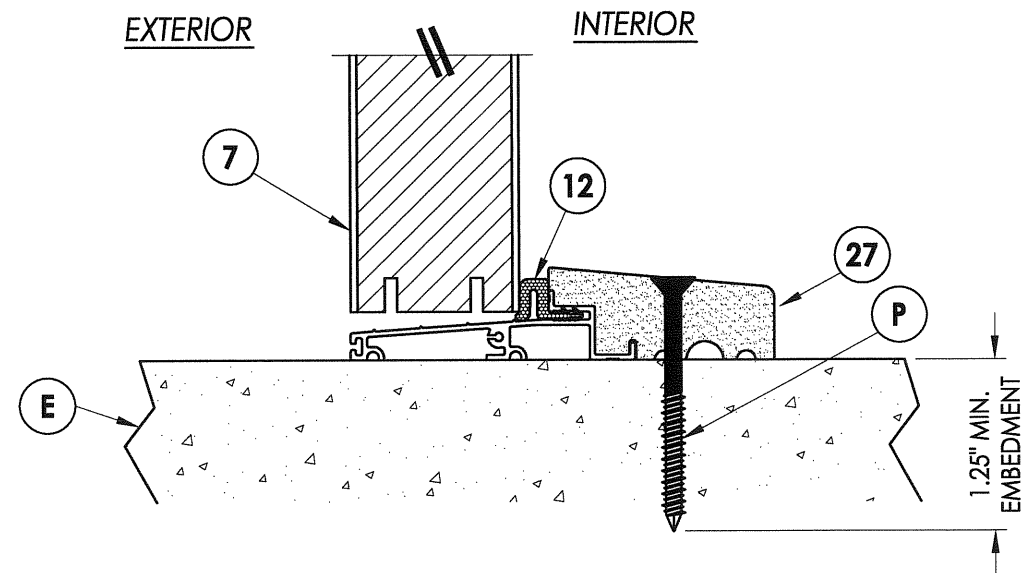
**2**  
**4** **VERTICAL CROSS SECTION**  
Shown w/1X sub-buck substituting concrete screws for wood screws per Section 1714.5.4.2 of the FBC



**4**  
**4** **VERTICAL CROSS SECTION**  
Outswing sill



**3**  
**4** **VERTICAL CROSS SECTION**  
Outswing sill - high dam



Documents Prepared By:

**RW** BUILDING CONSULTANTS, INC.  
P.O. Box 230 Valrico FL 33595  
Phone No.: 813.659.9197  
Florida Board of Professional Engineers  
Certificate Of Authorization No. 9813  
*LFS*  
Lyndon F. Schmidt, P.E. No. 43409

PRODUCT:  
TRINITY GLASS INT'L  
6 8 PREMIUM OPAQUE

PART OR ASSEMBLY:  
HORIZONTAL & VERTICAL  
CROSS SECTIONS

NO.	DATE	DWS	BY
1.	12/23/08		

DATE: 4/29/08

SCALE: N.T.S.

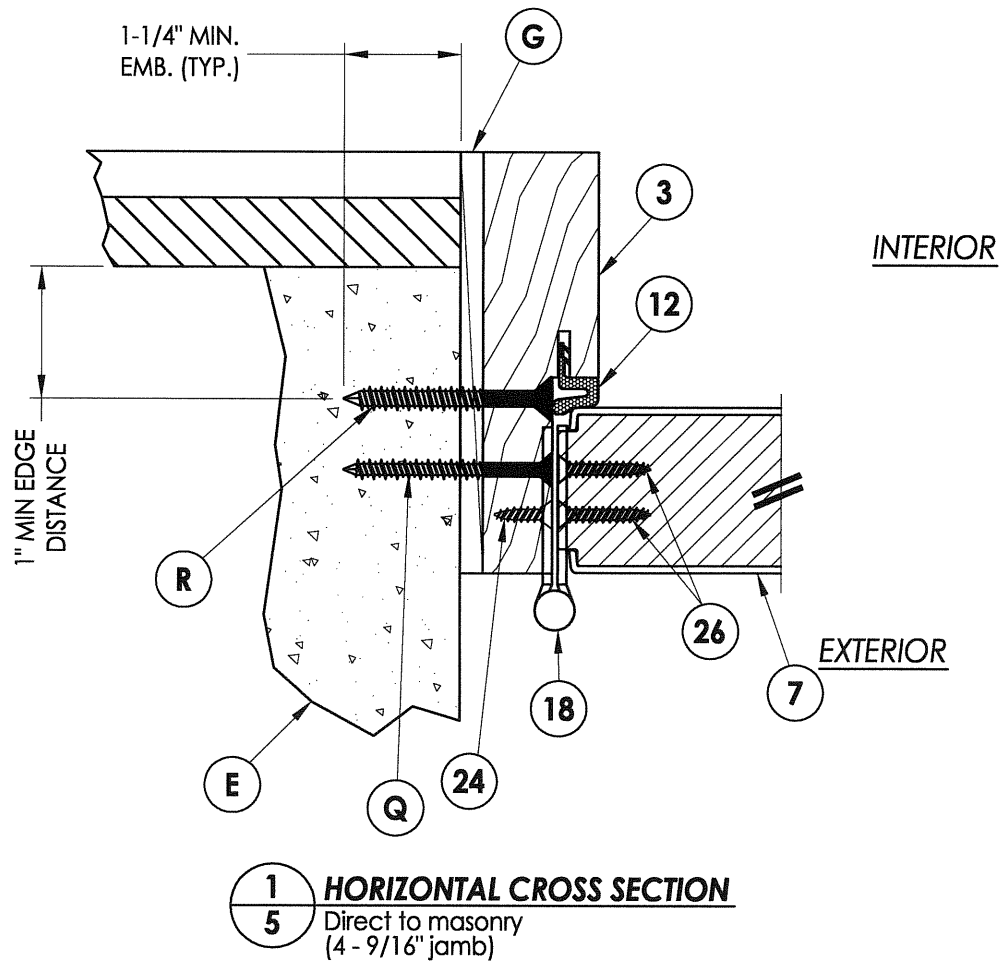
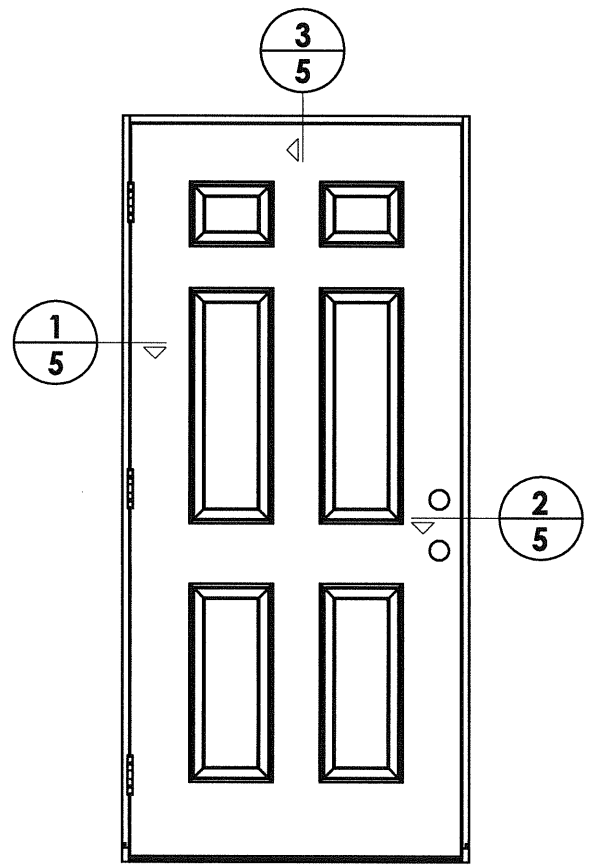
DWG. BY: DWS

CHK. BY: LFS

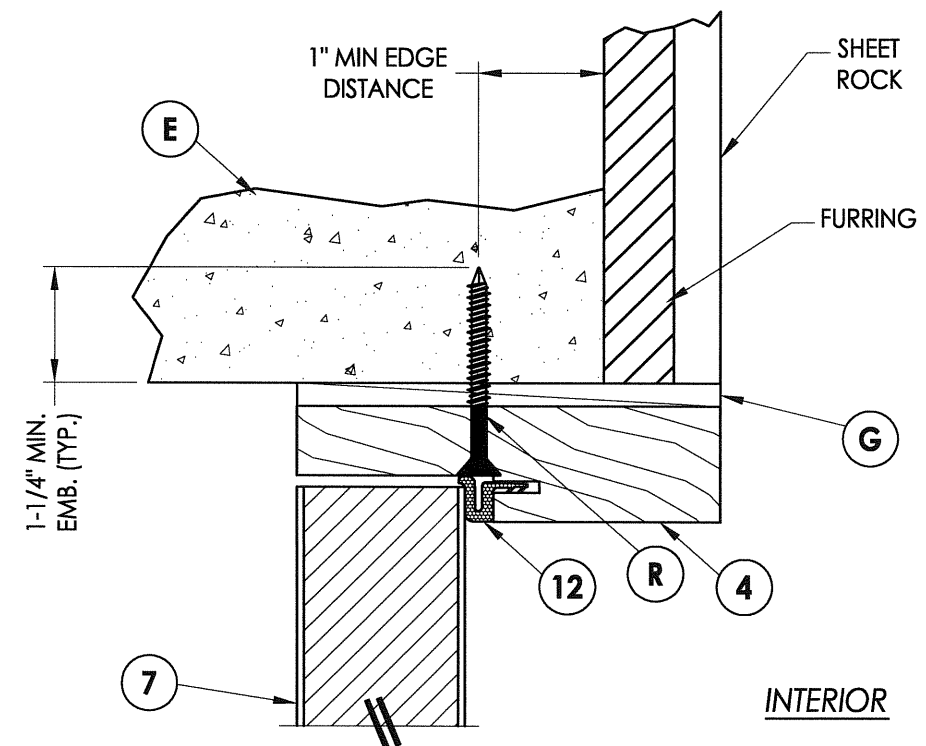
DRAWING NO.:

FL-7964.1

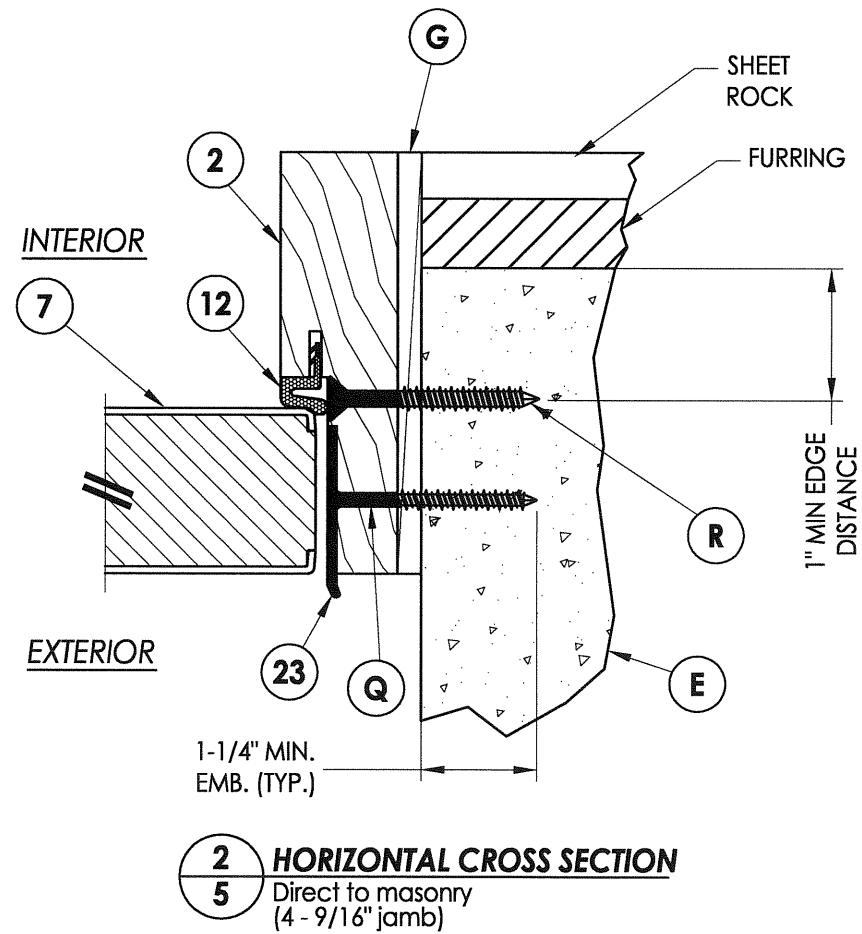
SHEET 4 OF 10



EXTERIOR



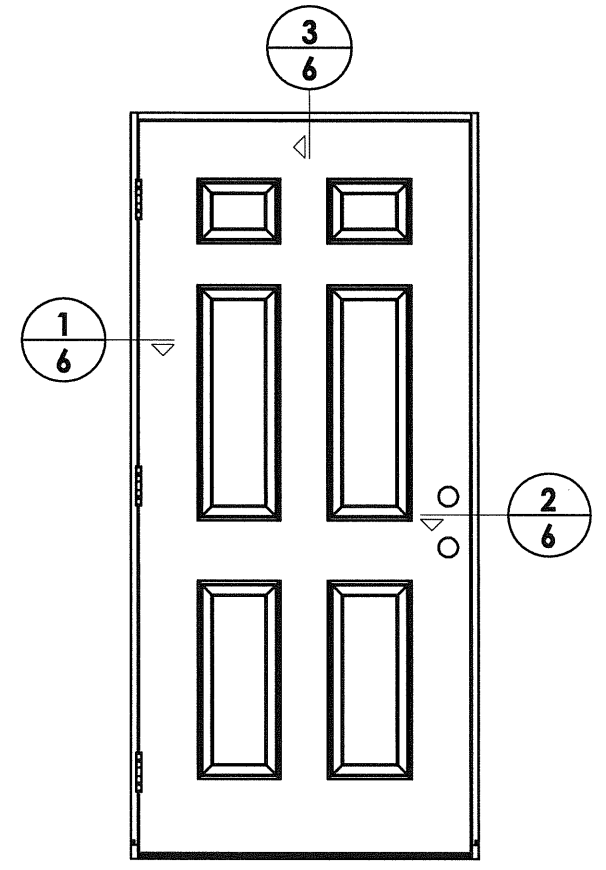
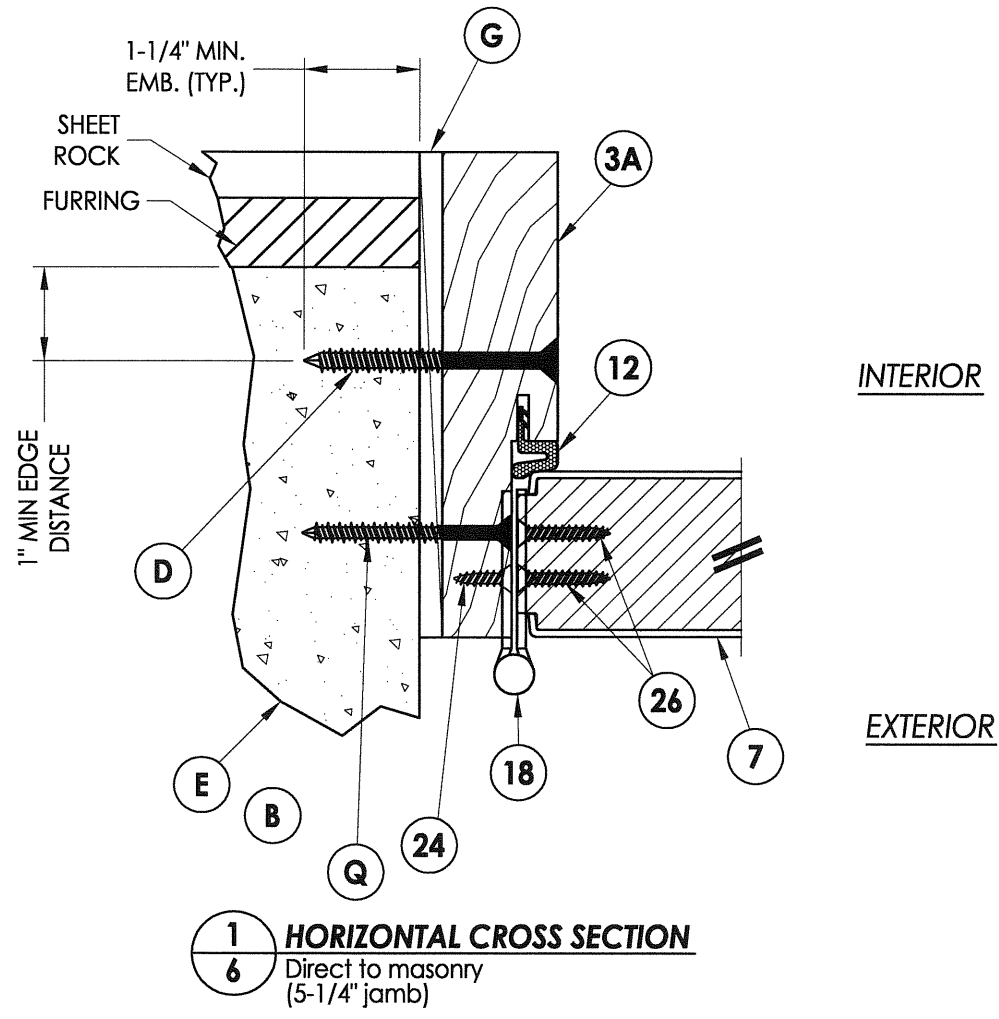
INTERIOR



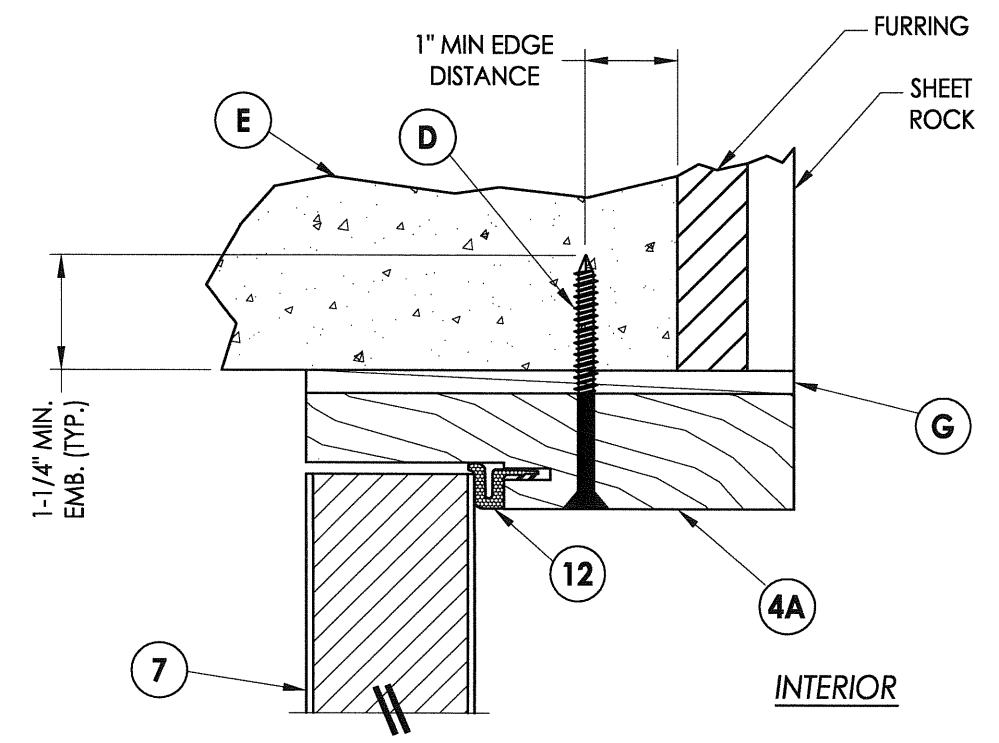
INTERIOR

EXTERIOR

Documents Prepared By:		BUILDING CONSULTANTS, INC. P.O. Box 230 Valrico FL 33595 Phone No.: 813.659.9197 Florida Board of Professional Engineers Certificate Of Authorization No. 9813 Lyndon F. Schmidt, P.E. No. 43409	
PRODUCT:	TRINITY GLASS INT'L 6'8 PREMIUM OPAQUE		
PART OR ASSEMBLY:	HORIZONTAL & VERTICAL CROSS SECTIONS		
NO.	DATE	DWS	BY
1.	12/23/08	DIRECT TO MASONRY ANCHORING	
REVISIONS			
DATE: 4/29/08			
SCALE: N.T.S.			
DWG. BY: DWS			
CHK. BY: LFS			
DRAWING NO.: FL-7964.1			
SHEET 5 OF 10			

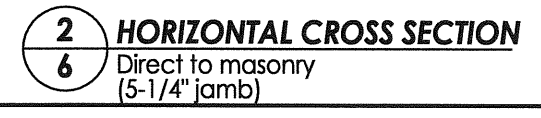


EXTERIOR

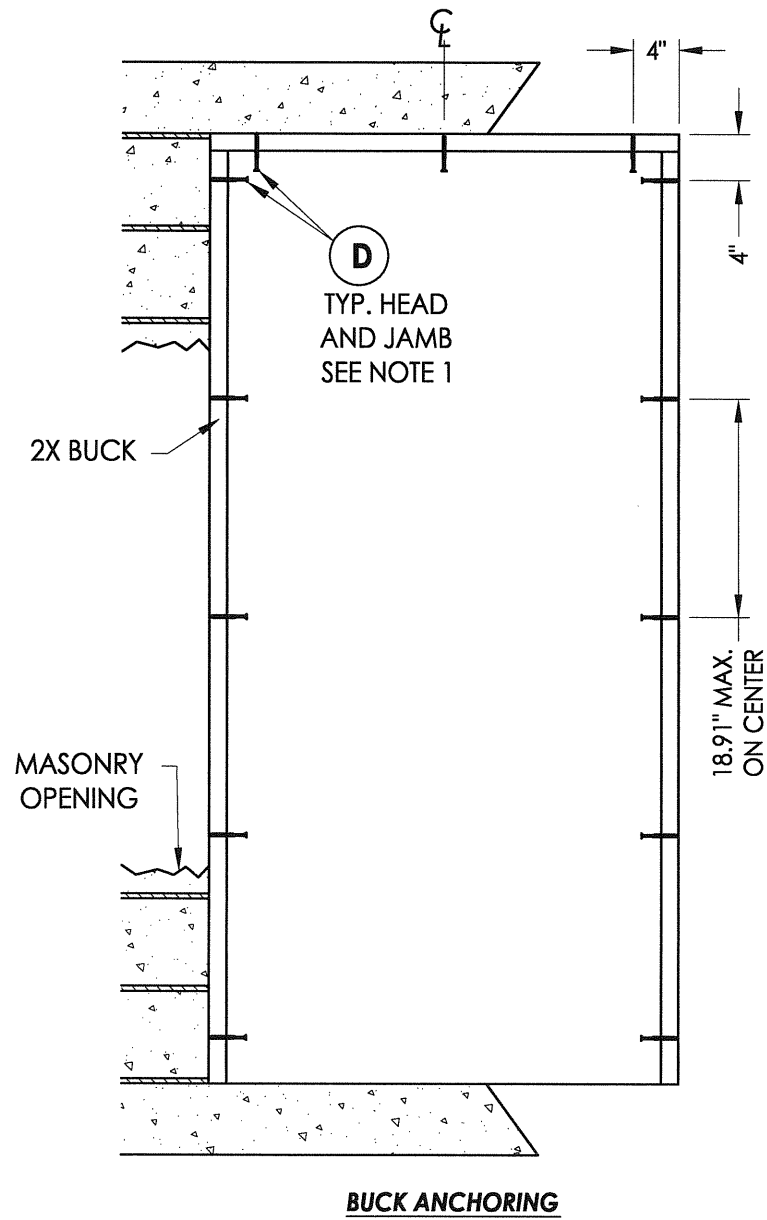


EXTERIOR

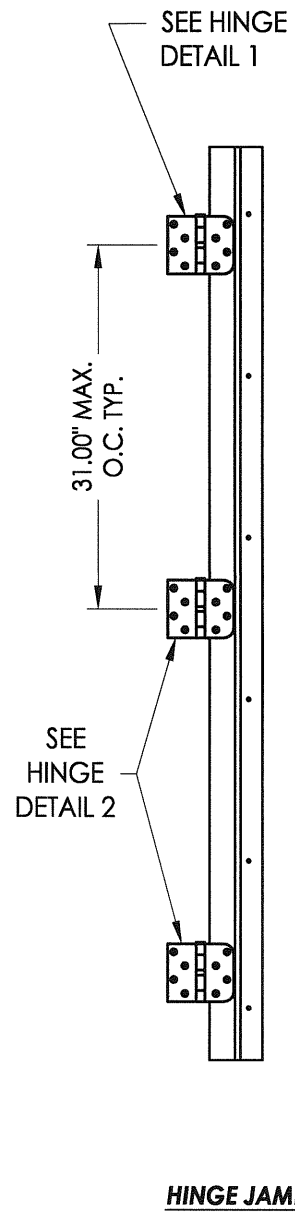
EXTERIOR



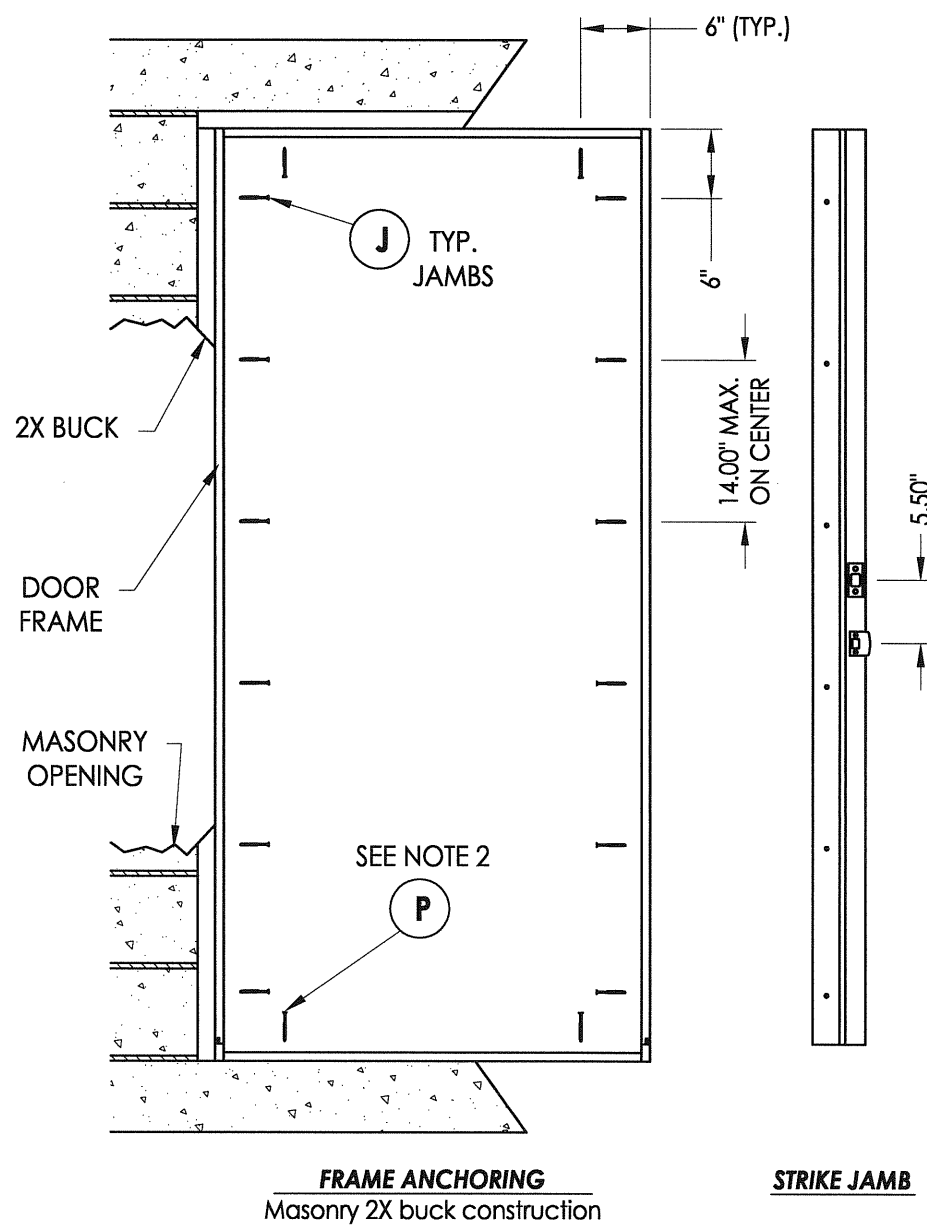
Documents Prepared By: <b>RW</b> BUILDING CONSULTANTS, INC. P.O. Box 230 Valrico FL 33595 Phone No.: 813.659.9197 Florida Board of Professional Engineers Certificate of Authorization No. 9813 <i>LF</i> 1-7-09 Lyndon F. Schmidt, P.E. No. 43409			
PRODUCT: TRINITY GLASS INT'L 6 8 PREMIUM OPAQUE	PART OR ASSEMBLY: HORIZONTAL & VERTICAL CROSS SECTIONS		
NO.	DATE	DWS	BY
1.	12/23/08	DIRECT TO MASONRY ANCHORING	
REVISIONS			
DATE: 4/29/08			
SCALE: N.T.S.			
DWG. BY: DWS			
CHK. BY: LFS			
DRAWING NO.: FL-7964.1			
SHEET 6 OF 10			



**BUCK ANCHORING**

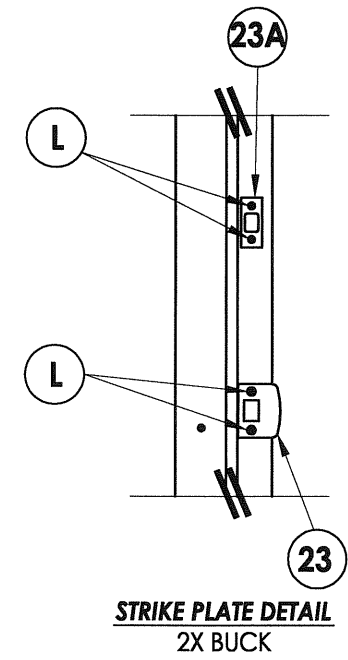


**HINGE JAMB**

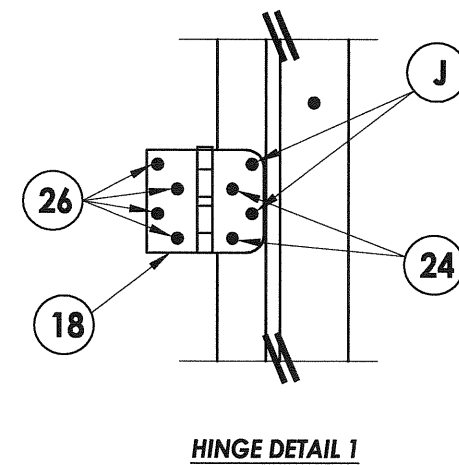


**FRAME ANCHORING**  
Masonry 2X buck construction

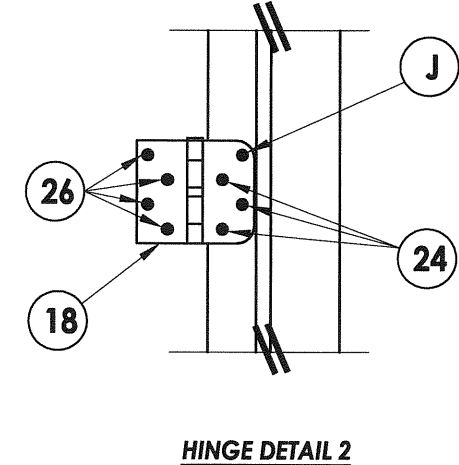
**STRIKE JAMB**



**STRIKE PLATE DETAIL**  
2X BUCK



**HINGE DETAIL 1**



**HINGE DETAIL 2**

**NOTES:**

1. 1/4" Elco Concrete screws anchoring 2x buck require a minimum 1" clearance to masonry edges, a 1-1/4" minimum embedment and a minimum 4" clearance to adjacent concrete screws. Substitution of equal concrete screws from a different supplier may have different edge distance and center distance requirements. Concrete screw locations at the corners may be adjusted to maintain the minimum edge distance to mortar joints. If Concrete screw locations noted as "MAX. ON CENTER" must be adjusted to maintain the minimum edge distance to mortar joints, additional Concrete screws may be required to ensure the maximum on center dimension is not exceeded.
2. 1/4" ITW concrete screws anchoring frame and/or sill require a minimum 2-1/2" clearance to masonry edges, a 1-1/4" minimum embedment and a minimum 3" clearance to adjacent concrete screws. Substitution of equal concrete screws from a different supplier may have different edge distance and center distance requirements. Concrete screw locations at the corners may be adjusted to maintain the minimum edge distance to mortar joints. If Concrete screw locations noted as "MAX. ON CENTER" must be adjusted to maintain the minimum edge distance to mortar joints, additional Concrete screws may be required to ensure the maximum on center dimension is not exceeded.

PRODUCT:

TRINITY GLASS INT'L  
6 8 PREMIUM OPAQUE

PART OR ASSEMBLY:

BUCK AND FRAME ANCHORING  
2X BUCK MASONRY CONSTRUCTION

NO.	DATE	BY	DWS
1.	12/23/08		DIRECT TO MASONRY ANCHORING

REVISIONS

DATE: 4/29/08

SCALE: N.T.S.

DWG. BY: DWS

CHK. BY: LFS

DRAWING NO.:  
FL-7964.1

SHEET 7 OF 10

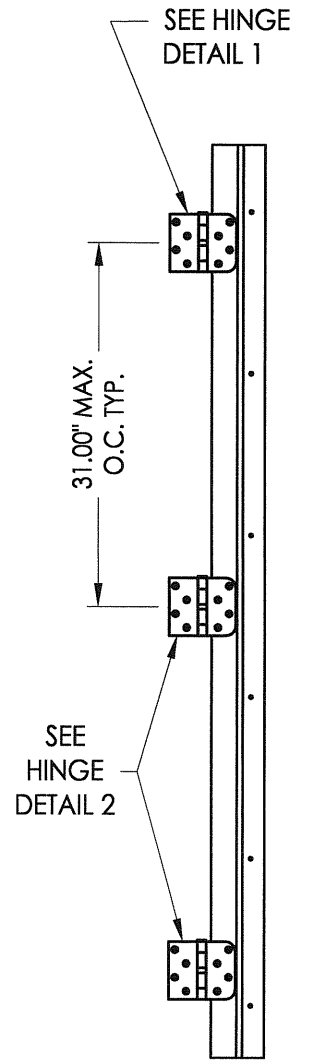
Documents Prepared By:

**RW** BUILDING CONSULTANTS, INC.  
P.O. Box 230 Valrico FL 33595  
Phone No.: 813.659.9197

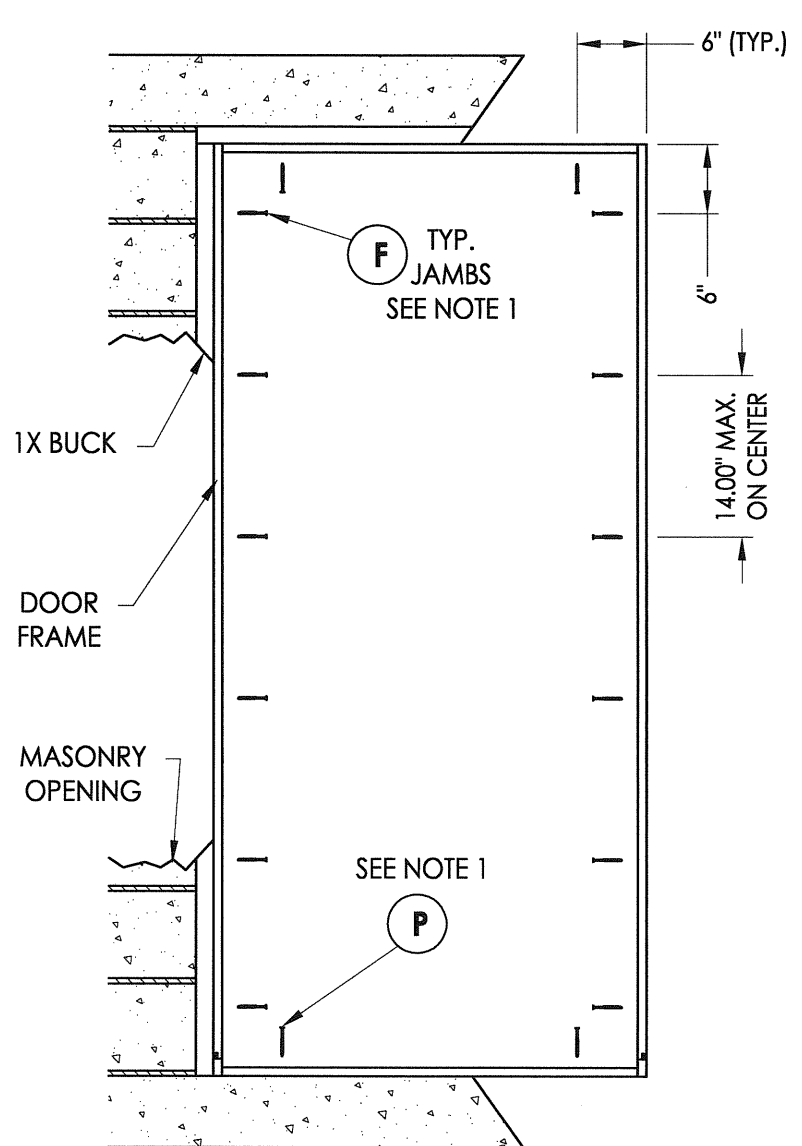
Florida Board of Professional Engineers  
Certificate Of Authorization No. 9813

Lyndon F. Schmidt, P.E. No. 43409

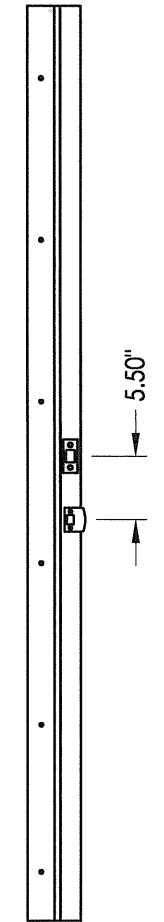
R:\A - Projects\Project Folders\Proj 1001-1100\pf1089\D. RWBC Drawings\FL-7964\FL-7964.1-7.DWG, Model



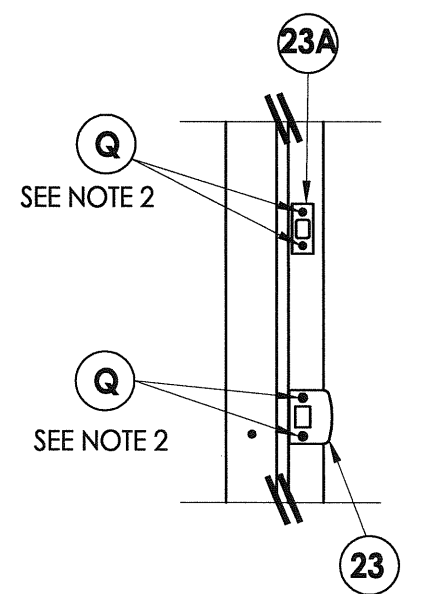
**HINGE JAMB**



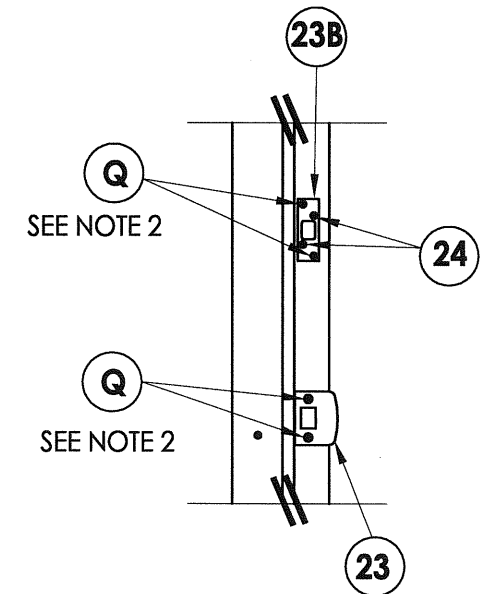
**FRAME ANCHORING**  
Masonry 1X buck construction  
or direct to masonry



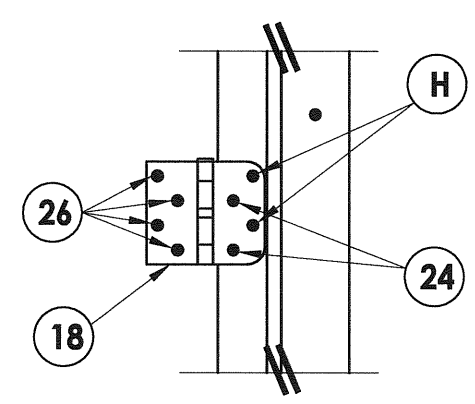
**STRIKE JAMB**



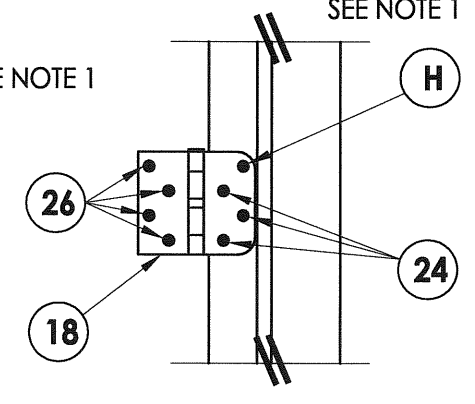
**STRIKE PLATE DETAIL**  
1X buck/Direct to masonry  
MAX. DESIGN PRESSURE  
±55 p.s.f.



**STRIKE PLATE DETAIL**  
1X buck/Direct to masonry  
MAX. DESIGN PRESSURE  
±65 p.s.f.



**HINGE DETAIL 1**



**HINGE DETAIL 2**

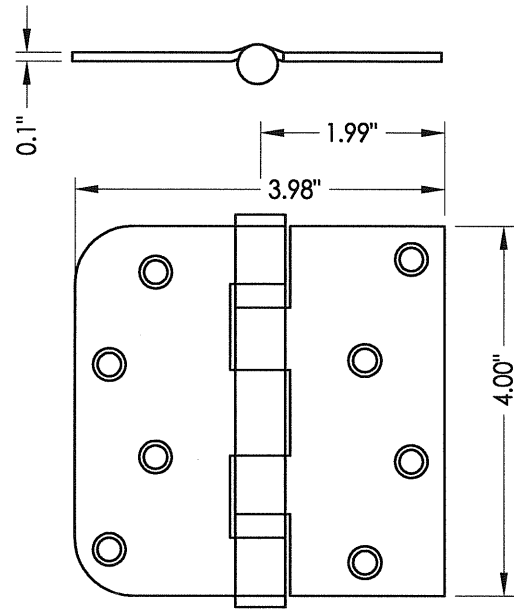
**NOTES:**

- 1/4" ITW concrete screws anchoring frame and/or sill require a minimum 2-1/2" clearance to masonry edges, a 1-1/4" minimum embedment and a minimum 3" clearance to adjacent concrete screws. Substitution of equal concrete screws from a different supplier may have different edge distance and center distance requirements. Concrete screw locations at the corners may be adjusted to maintain the minimum edge distance to mortar joints. If Concrete screw locations noted as "MAX. ON CENTER" must be adjusted to maintain the minimum edge distance to mortar joints, additional Concrete screws may be required to ensure the maximum on center dimension is not exceeded.
- 3/16" ITW concrete screws anchoring frame and/or sill require a minimum 2-5/8" clearance to masonry edges, a 1-1/4" minimum embedment and a minimum 2-1/4" clearance to adjacent concrete screws unless otherwise noted by concrete screw manufacturer.

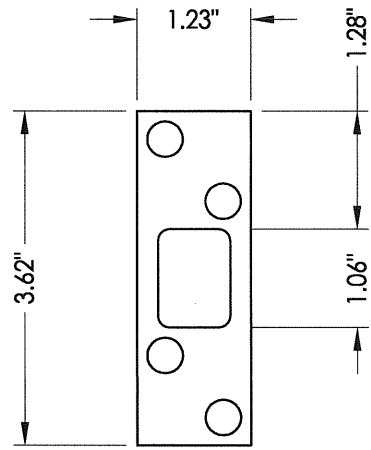
Documents Prepared By: **RW** BUILDING CONSULTANTS, INC.  
P.O. Box 230 Valrico FL 33595  
Phone No.: 813.659.9197  
Florida Board of Professional Engineers  
Certificate Of Authorization No. 9813  
*LF 5/26/17.07*  
Lyndon F. Schmidt, P.E. No. 43409

PRODUCT:	TRINITY GLASS INT'L 6 8 PREMIUM OPAQUE		
PART OR ASSEMBLY:	FRAME ANCHORING 1x BUCK MASONRY CONSTRUCTION		
NO.	DATE	DWS	BY
1.	12/23/08		
REVISIONS			
DATE:	4/29/08		
SCALE:	N.T.S.		
DWG. BY:	DWS		
CHK. BY:	LFS		
DRAWING NO.:	FL-7964.1		
SHEET	8	OF	10

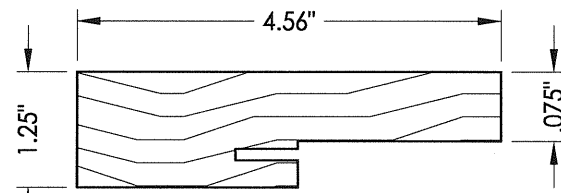
© 2008 R.W. BUILDING CONSULTANTS INC.



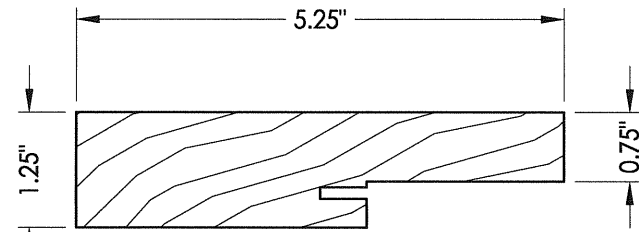
18 HINGE



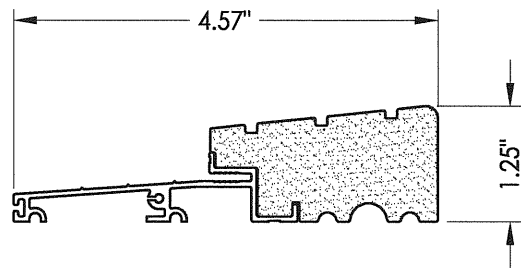
23B DEADBOLT PLATE  
4-HOLE



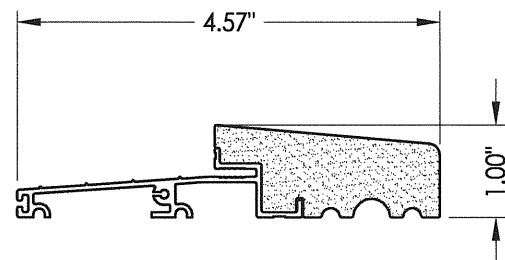
4 3 2 SIDE & HEAD JAMBS



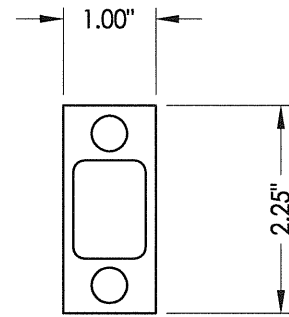
4A 3A 2A SIDE & HEAD JAMBS  
(5-1/4" or larger)



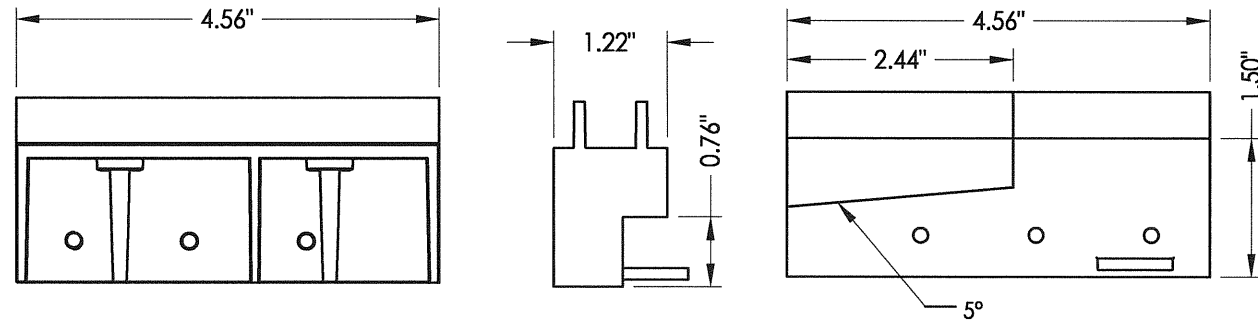
25 OUTSWING THRESHOLD  
High-dam option



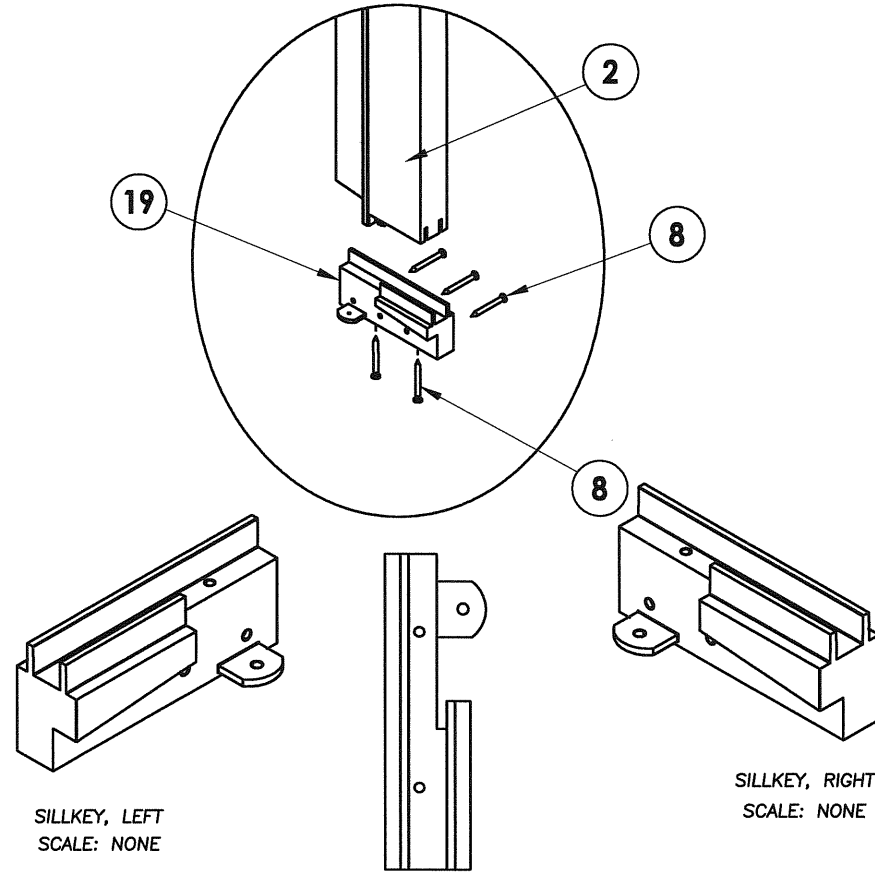
27 OUTSWING THRESHOLD



23B DEADBOLT PLATE  
2-HOLE



19 SILLKEY DETAILS  
Optional



Documents Prepared By:

**RW** BUILDING CONSULTANTS, INC.  
P.O. Box 230 Valrico FL 33595  
Phone No.: 813.659.9197  
Florida Board of Professional Engineers  
Certificate Of Authorization No. 9813  
*RF* 1-7-09  
Lyndon F. Schmidt, P.E. No. 43409

PRODUCT:  
TRINITY GLASS INT'L  
6.8 PREMIUM OPAQUE

PART OR ASSEMBLY:  
COMPONENTS

NO.	DATE	DIRECT TO MASONRY ANCHORING	DWS	BY
1.	12/23/08			

REVISIONS

DATE: 4/29/08

SCALE: N.T.S.

DWG. BY: DWS

CHK. BY: LFS

DRAWING NO.:  
FL-7964.1

SHEET 9 OF 10

BILL OF MATERIALS		
ITEM	DESCRIPTION	MATERIAL
A	1X BUCK	WOOD
B	2X BUCK SG >= 0.55	WOOD
D	1/4" X 2-3/4" ELCO PFH CONCRETE SCREW	STEEL
E	MASONRY - 3,192 PSI MIN. CONCRETE CONFORMING TO ACI 301 OR HOLLOW BLOCK CONFORMING TO ASTM C90	CONCRETE
F	1/4" X 3-3/4" ITW PFH CONCRETE SCREW	STEEL
G	MAX. 1/4" SHIM SPACE	WOOD
H	1/4" X 3-1/4" ITW PFH CONCRETE SCREW	STEEL
J	#10 X 2.5" PFH WS	STEEL
L	#8 X 2-1/2" PFH WS	STEEL
M	#3/16 X 3-1/4" ITW PFH CONCRETE SCREW	STEEL
P	1/4" X 2-3/4" ITW PFH CONCRETE SCREW	STEEL
Q	3/16" X 2-1/4" ITW PFH CONCRETE SCREW	STEEL
R	1/4" X 2-1/4" ITW PFH CONCRETE SCREW	STEEL
2	STRIKE JAMB - FINGER-JOINT PINE (4 - 9/16") - SG >= 0.42	WOOD
2A	STRIKE JAMB - FINGER-JOINT PINE (5 - 1/4") - SG >= 0.42	WOOD
3	HINGE JAMB - FINGER-JOINT PINE (4 - 9/16") - SG >= 0.42	WOOD
3A	HINGE JAMB - FINGER-JOINT PINE (5 - 1/4") - SG >= 0.42	WOOD
4	HEAD - FINGER-JOINT PINE (4 - 9/16") - SG >= 0.42	WOOD
4A	HEAD - FINGER-JOINT PINE (5 - 1/4") - SG >= 0.42	WOOD
7	DOOR PANEL - SEE DOOR PANEL DETAIL SHEET FOR CONSTRUCTION DETAILS	-
8	#6 X 1-1/4" PFH DRYWALL SCREW	STEEL
12	WEATHER STRIP QEBD650 Q-LON	-
18	3.983" X 4.0" HINGE MIN 0.098" THICK	STEEL
19	SILLKEY	PC/ASA
23	STRIKE PLATE	STEEL
23A	DEADBOLT PLATE (2-HOLE)	STEEL
23B	DEADBOLT PLATE (4-HOLE)	STEEL
24	#9 X 5/8" PFH WS	STEEL
25	OUTSWING HIGH-DAM THRESHOLD ALUMINUM W/ COMPOSITE SUBSTRATE	ALUM./ COMP.
26	#9 X 1.0" PFH WS	STEEL
27	OUTSWING THRESHOLD ALUMINUM W/ COMPOSITE SUBSTRATE	ALUM./ COMP.
30	LATCH STILE - SG >= 0.42	LVL/PVC
31	LVL LOCK BLOCK	POPLAR
32	HINGE STILE - SG >= 0.42	LVL/PVC
33	TOP RAIL - POPLAR LVL & WPC COMBINATION	POPLAR/WPC
34	BOTTOM RAIL - POPLAR LVL & WPC COMBINATION	POPLAR/WPC
39	FIBERGLASS SKIN 0.079" MIN. THICKNESS (Fy = 5,203 PSI MIN.)	FIBERGLASS

DATE: 4/29/08  
 SCALE: N.T.S.  
 DWG. BY: DWS  
 CHK. BY: LFS  
 DRAWING NO.: FL-7964.1  
 SHEET 10 OF 10

NO.	DATE	DIRECT TO MASONRY ANCHORING	DWS	BY
1.	12/23/08			

PRODUCT: TRINITY GLASS INT'L  
6'8" PREMIUM OPAQUE  
 PART OR ASSEMBLY: BILL OF MATERIALS

Documents Prepared By:  
**RW** BUILDING CONSULTANTS, INC.  
 P.O. Box 230 Valrico FL 33595  
 Phone No.: 813.659.9197  
 Florida Board of Professional Engineers  
 Certificate Of Authorization No. 9813  
*LF*  
 Lyndon F. Schmidt, P.E. No. 43409

REVISIONS