



Trinity Glass
INTERNATIONAL

4621 192nd STREET EAST TACOMA, WA 98446

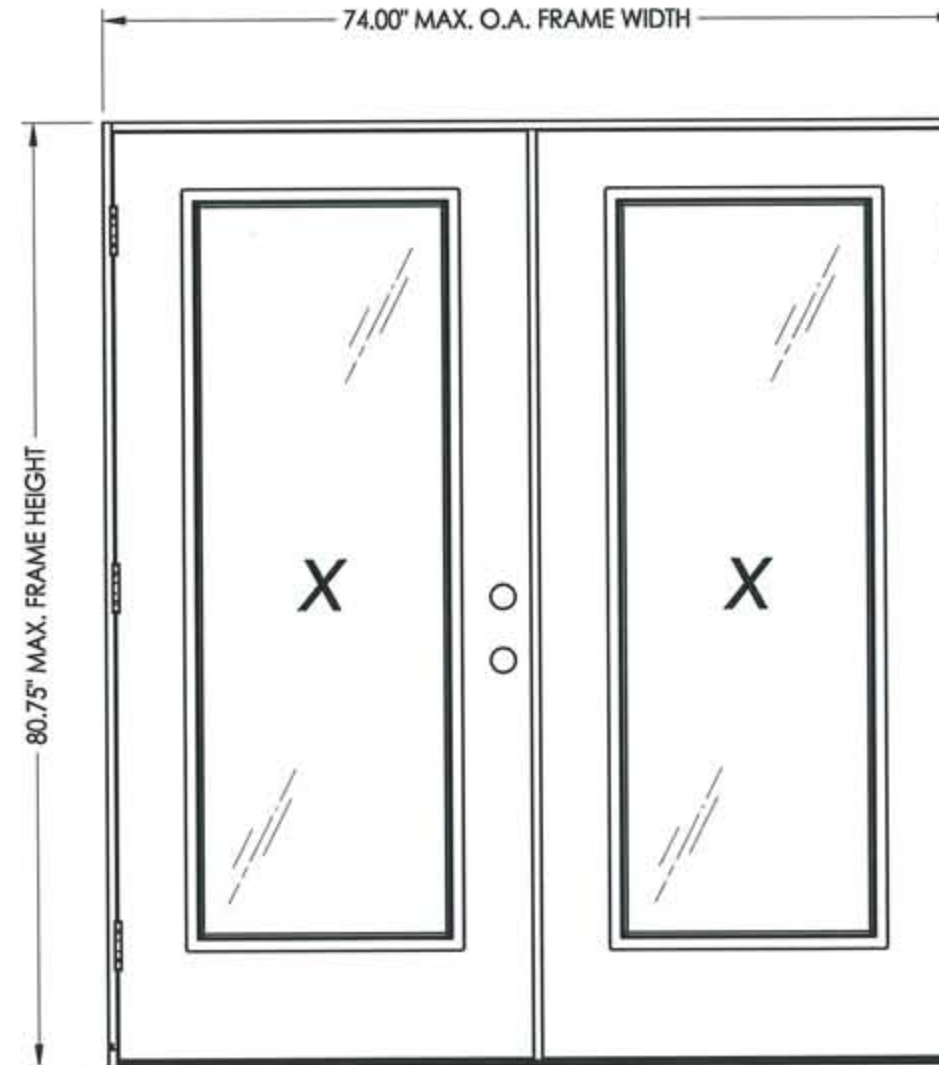
**FLUSH-GLAZED
FIBERGLASS DOOR
OUTSWING
"IMPACT"**

GENERAL NOTES

1. This product has been evaluated and is in compliance with the 2007 Florida Building Code (FBC) structural requirements including the "High Velocity Hurricane Zone" (HVHZ).
2. Product anchors shall be as listed and spaced as shown on details. Anchor embedment to base material shall be beyond wall dressing or stucco.
3. When used in the "HVHZ" this product complies with section 1626 of the 2007 FBC and does not require an impact resistant covering.
4. When used in areas requiring wind borne debris protection this product complies with Section 1609.1.2 of the 2007 FBC and does not need to be protected with an impact resistant covering. This product meets missile level "D" and includes Wind Zone 4 as defined in ASTM E1996.
5. For 2x stud framing construction, anchoring of these units shall be the same as that shown for 2x buck masonry construction.
6. Site conditions that deviate from the details of this drawing require further engineering analysis by a licensed engineer or registered architect.
7. This product meets water infiltration requirements for "HVHZ".

TABLE OF CONTENTS

SHEET #	DESCRIPTION
1	Typical elevation, design pressures & general notes
2	Door panel construction details & glazing details (rectangular)
3	Door panel construction details & glazing details (oval)
4	Horizontal cross sections
5	Vertical cross sections
6	Horizontal & vertical cross sections
7	Horizontal & vertical cross sections
8	Buck anchoring
9	Frame anchoring - 2X buck masonry construction
10	Frame anchoring - 1X buck masonry construction
11	Components
12	Endura astragal details
13	Trinity astragal details
14	Bill of materials



Rectangular life elevation shown

ASTRAGAL TYPE	SWING	MAX. FRAME DIMENSION	GLASS TYPE	DESIGN PRESSURE (PSF)	
				POSITIVE	NEGATIVE
ENDURA	OUTSWING	74.00" x 80.75"	G1, G2, G3, G4	+55.0	-55.0
TRC	OUTSWING	74.00" x 80.75"		+55.0	-55.0

Documents Prepared By:

RW BUILDING CONSULTANTS, INC.
P.O. Box 230 Vairico FL 33595
Phone No.: 813.659.9197
Florida Board of Professional Engineers
Certificate of Authorization No. 9813
LFS 1-8-09
Lyndon F. Schmidt, P.E. No. 43409

PRODUCT:
TRINITY GLASS INT'L
6"8 FLUSH GLAZED

PART OR ASSEMBLY:
TYPICAL ELEVATION, DESIGN PRESSURES & GENERAL NOTES

NO.	DATE	DESCRIPTION	BY
2	12/23/08	DIRECT TO MASONRY ANCHORING	DWS
1	09/29/08	ADD OVAL LITED PANEL	JK

REVISIONS

DATE: 9/30/08

SCALE: N.T.S.

DWG. BY: JK

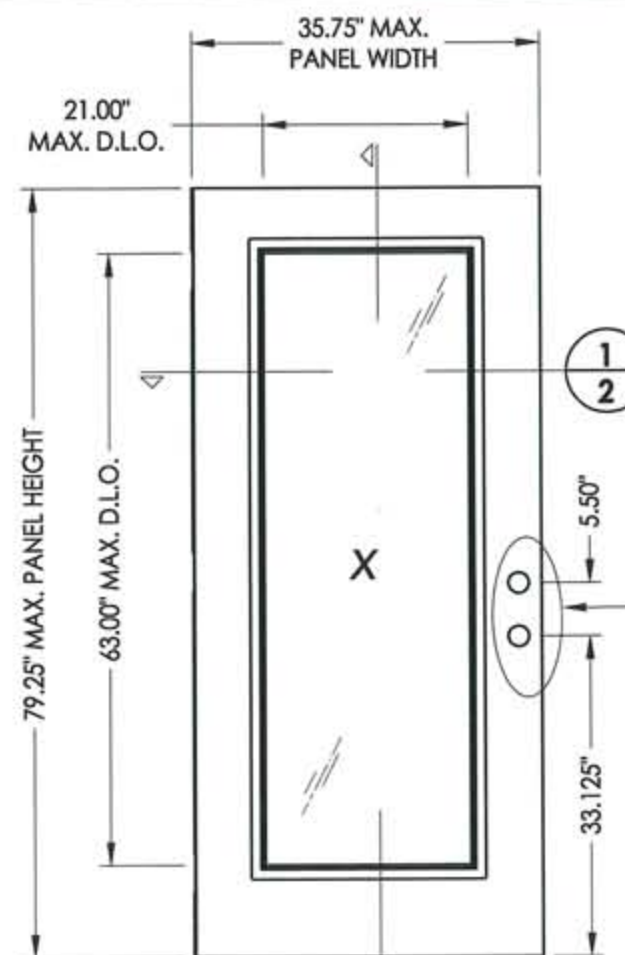
CHK. BY: LFS

DRAWING NO.:

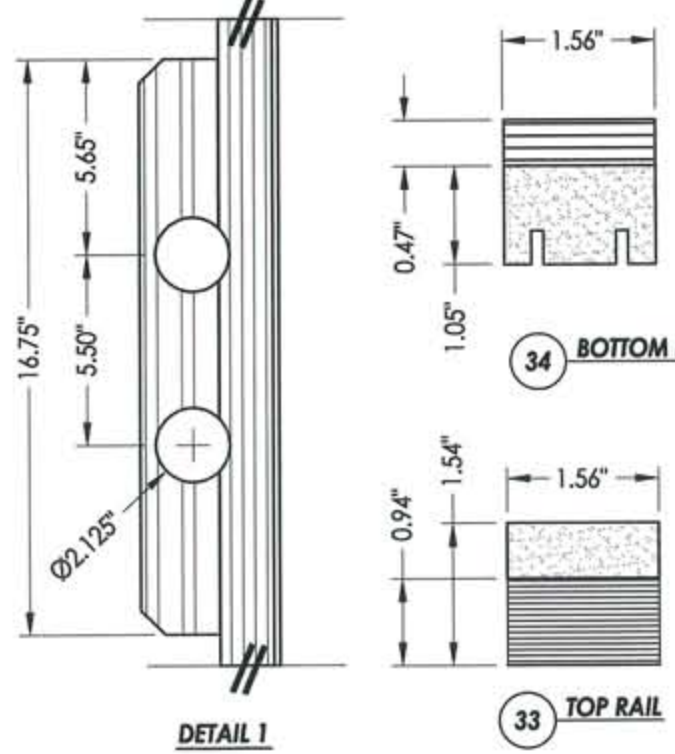
FL-7960.6

SHEET 1 OF 14

R:\A - Projects\Project Folders\Proj 1001-1100\p1088\1088.D. RWBC Drawings\FL-7960-R1\FL-7960.1-7 REV1.dwg, Model



7 DOOR PANEL
Full lite

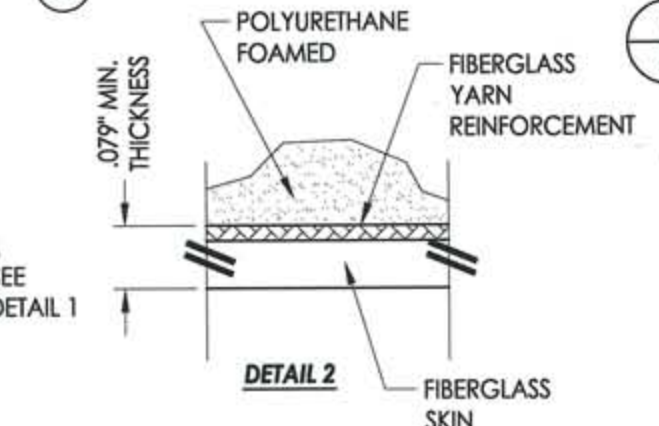


33 TOP RAIL

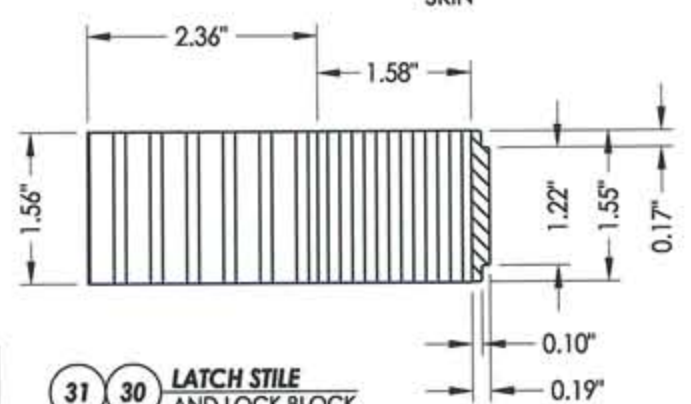
34 BOTTOM RAIL

31 30 LATCH STILE AND LOCK BLOCK

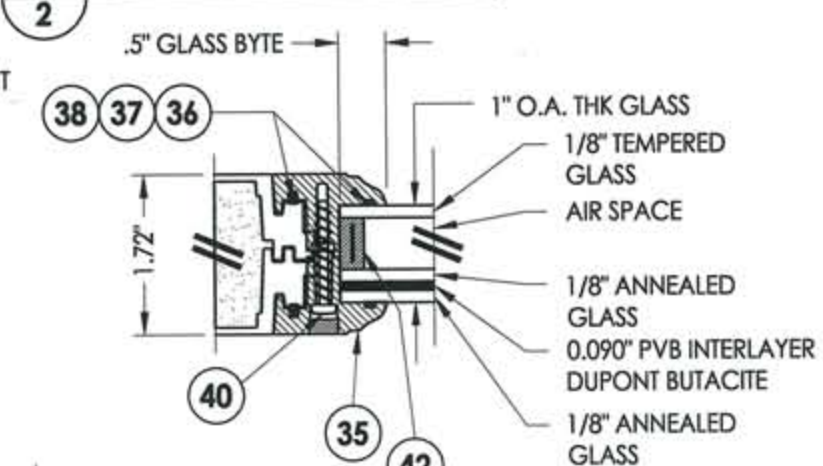
32 HINGE STILE



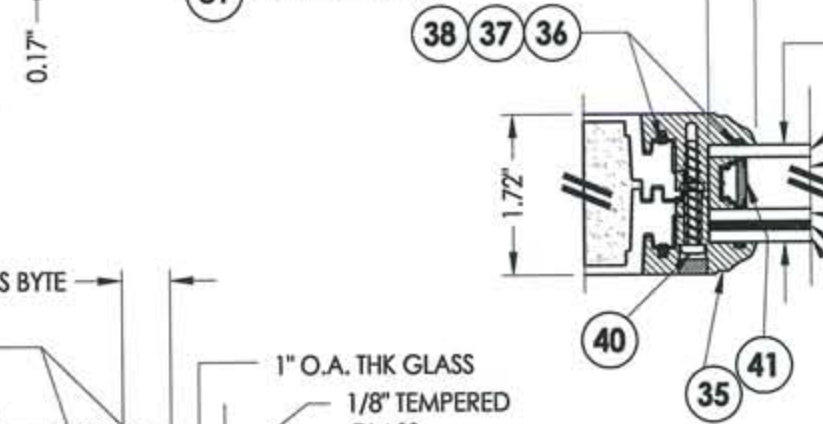
DETAIL 2



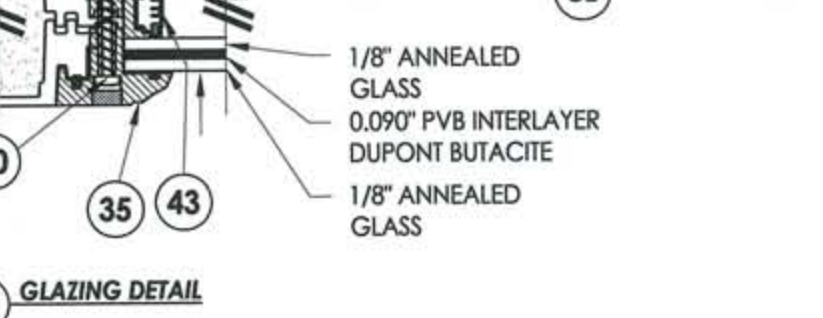
1 2 HORIZONTAL CROSS SECTION



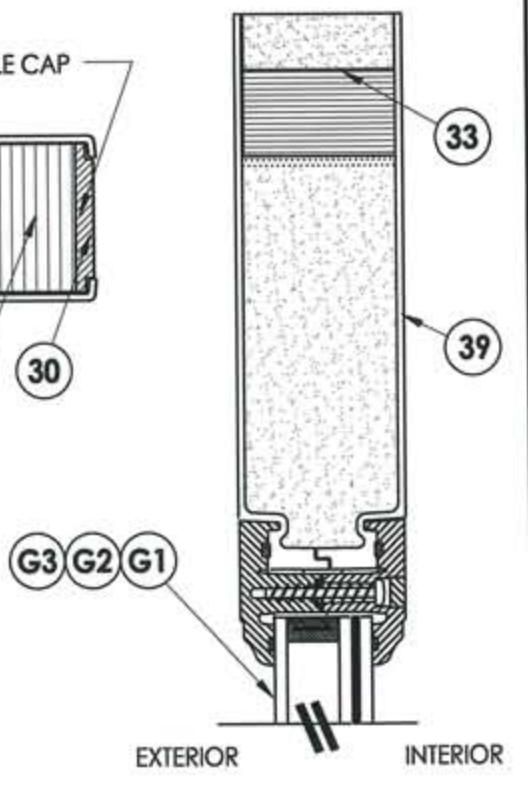
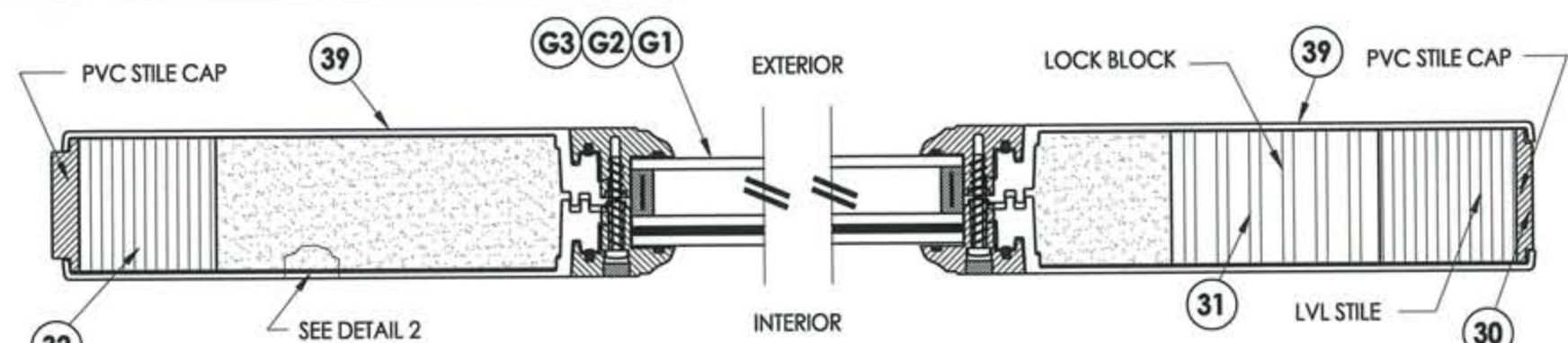
G1 GLAZING DETAIL



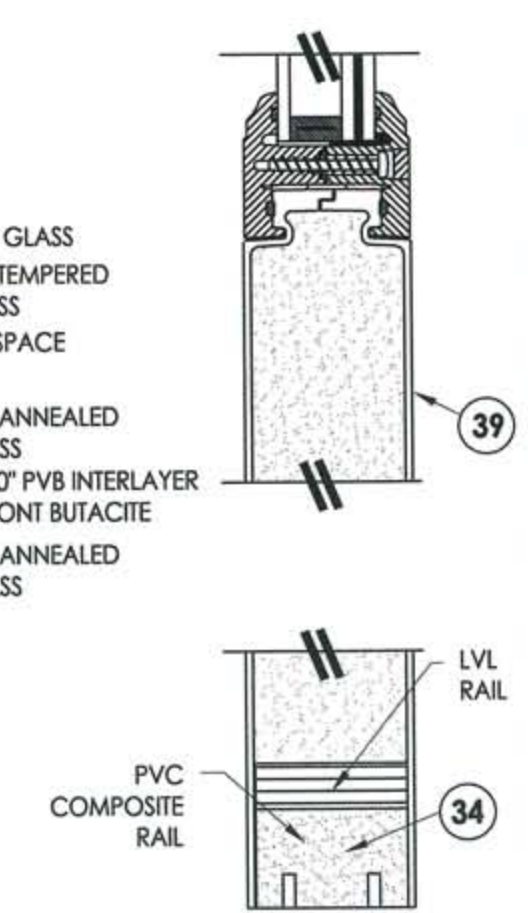
G2 GLAZING DETAIL



G3 GLAZING DETAIL



2 2 VERTICAL CROSS SECTION



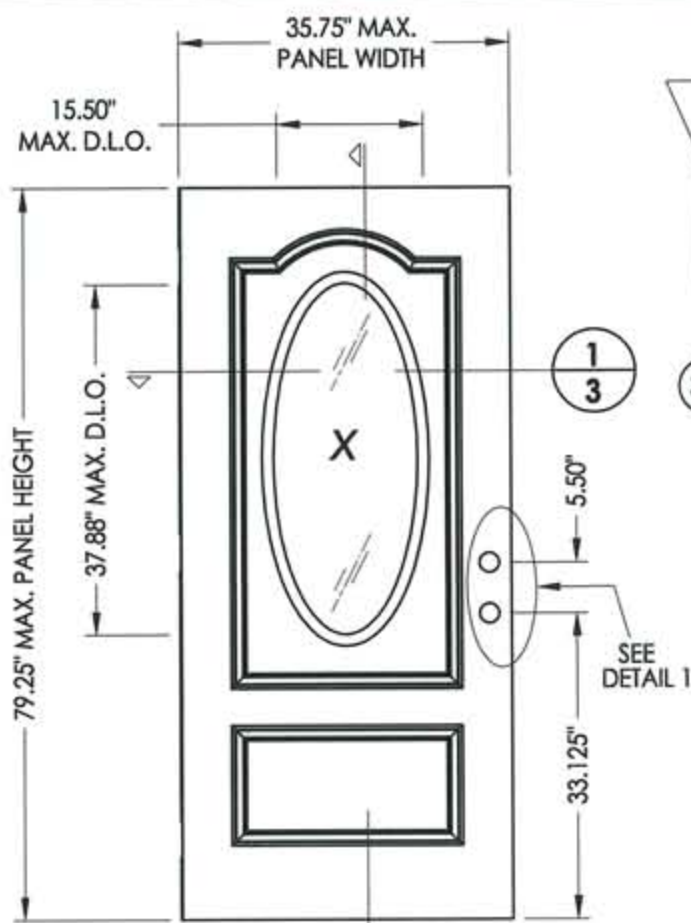
Documents Prepared By:
RW BUILDING CONSULTANTS, INC.
 P.O. Box 230 Vairco FL, 33595
 Phone No.: 813.659.9197
 Florida Board of Professional Engineers
 Certificate Of Authorization No. 9813
 1752 1-8-09
 Lyndon F. Schmidt, P.E. No. 43409

PRODUCT: TRINITY GLASS INT'L
6'8 FLUSH GLAZED
 PART OR ASSEMBLY: DOOR PANEL CONSTRUCTION
DETAILS AND GLAZING DETAILS
(RECTANGULAR)

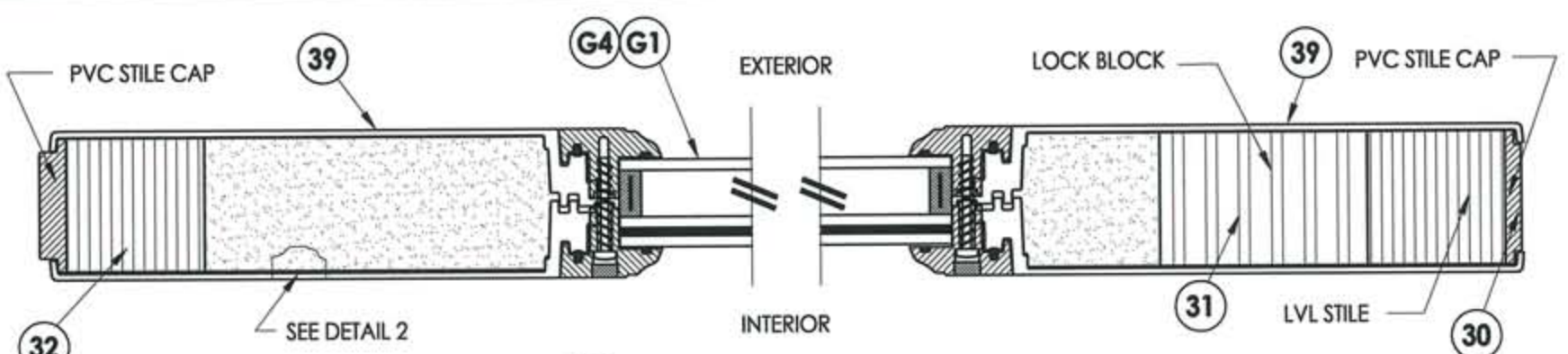
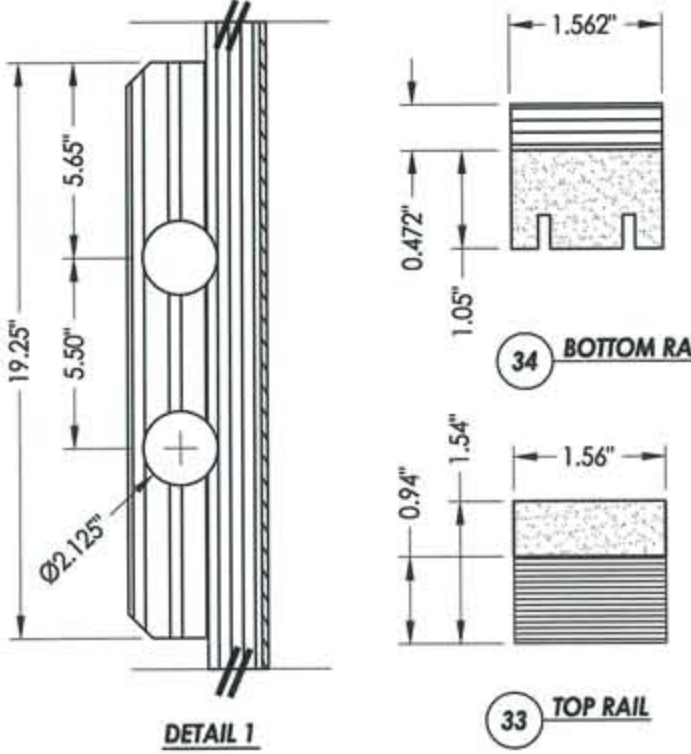
REVISIONS	
NO	DATE
2	12/23/08
1	09/29/08

DATE: 9/30/08
 SCALE: N.T.S.
 DWG. BY: JK
 CHK. BY: LFS
 DRAWING NO.: FL-7960.6
 SHEET 2 OF 14

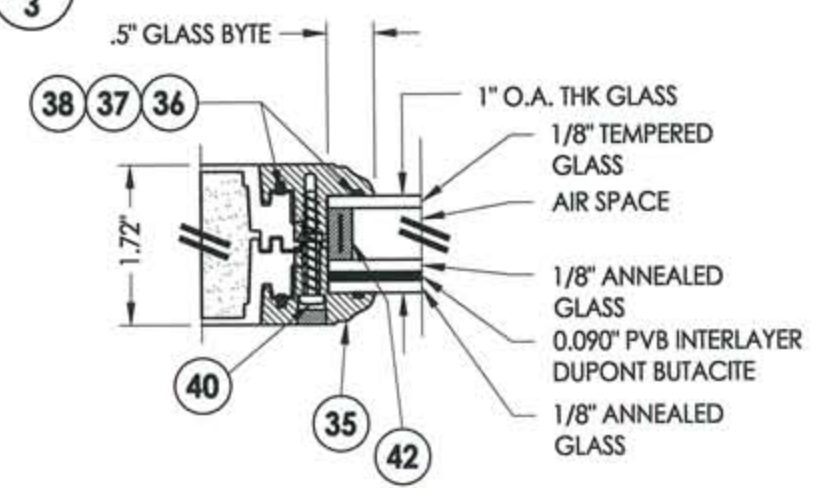
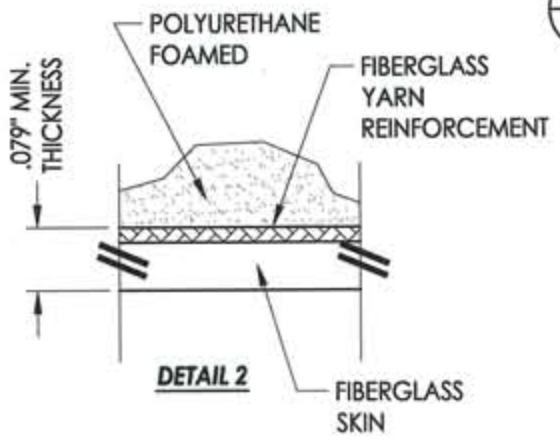
R:\A - Projects\Project Folders\Proj 1001-1100\p1088\D. RWBC Drawings\FL-7960-R1\FL-7960.1-7 REV1.dwg, Model



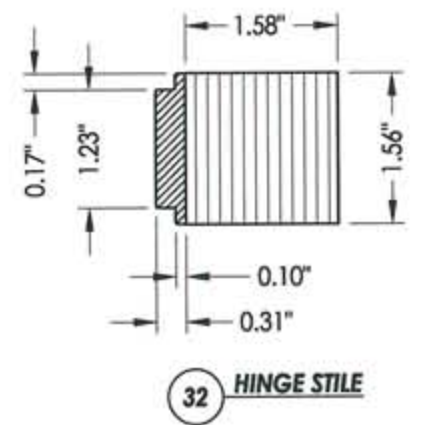
7 DOOR PANEL
Oval lite



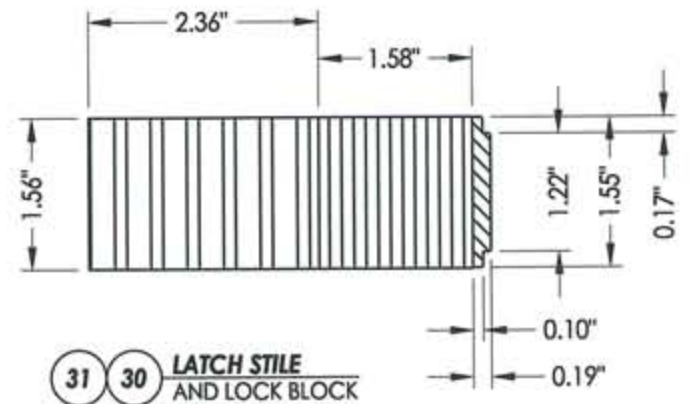
1 HORIZONTAL CROSS SECTION



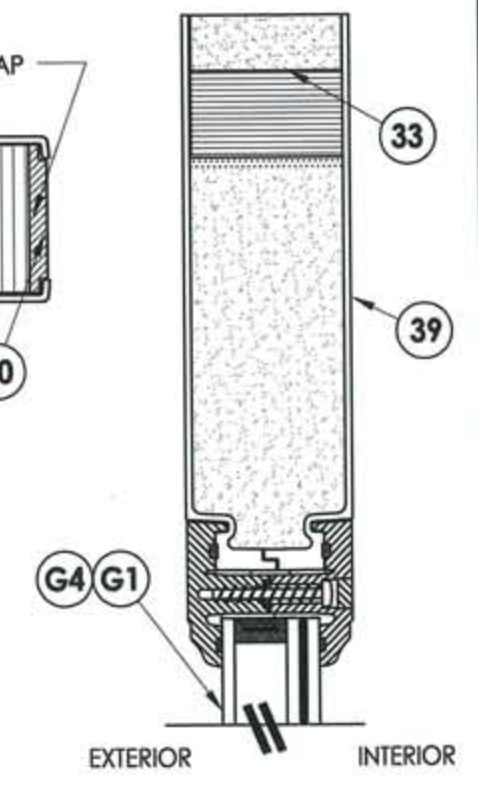
G1 GLAZING DETAIL



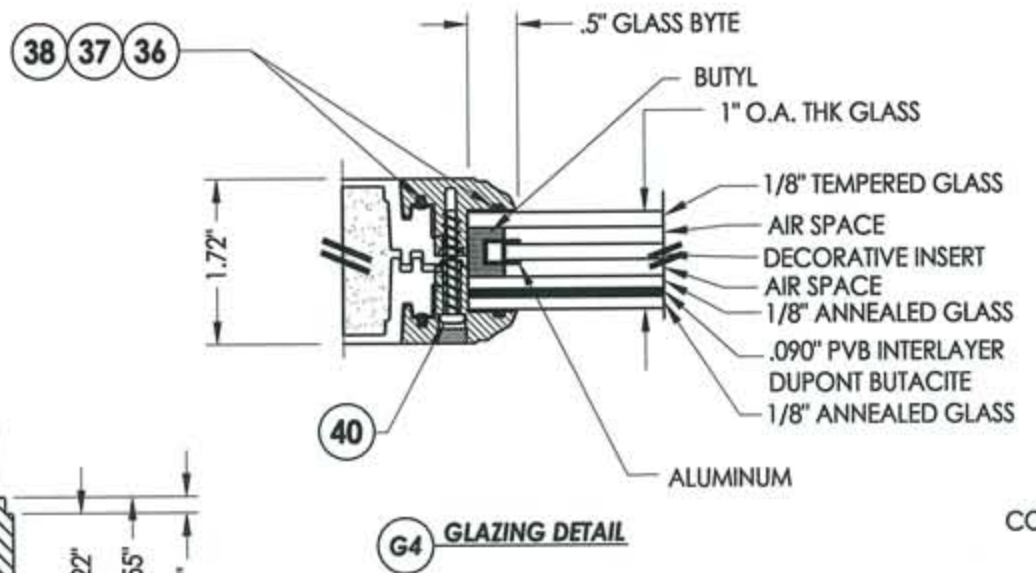
32 HINGE STILE



31 30 LATCH STILE AND LOCK BLOCK



2 VERTICAL CROSS SECTION



G4 GLAZING DETAIL

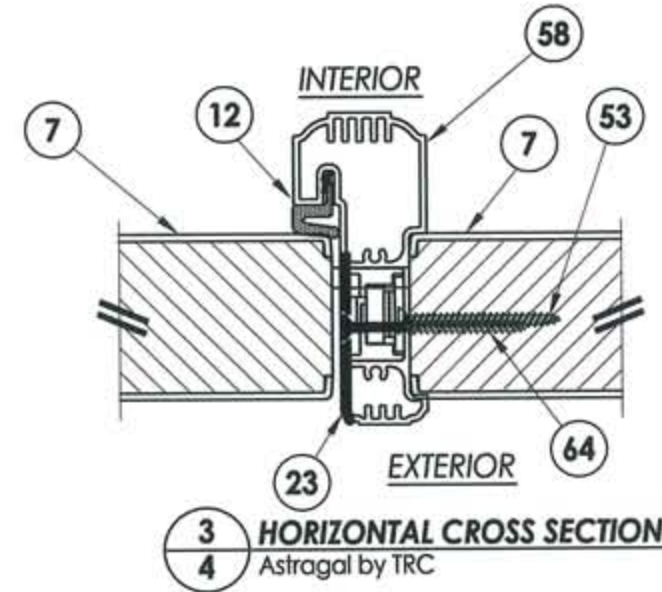
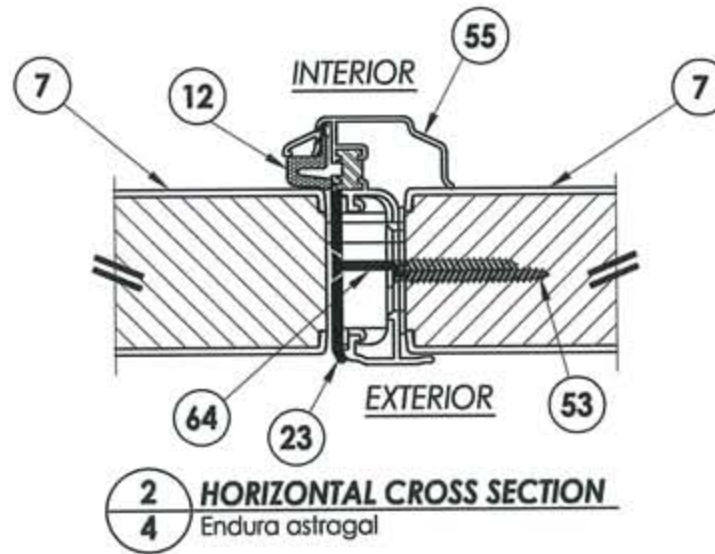
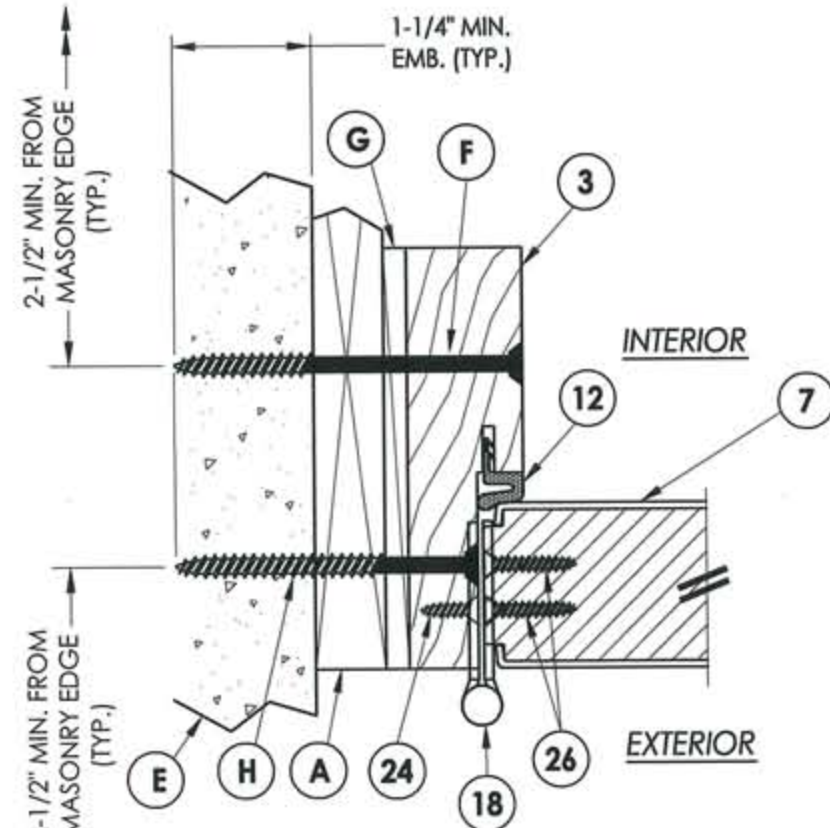
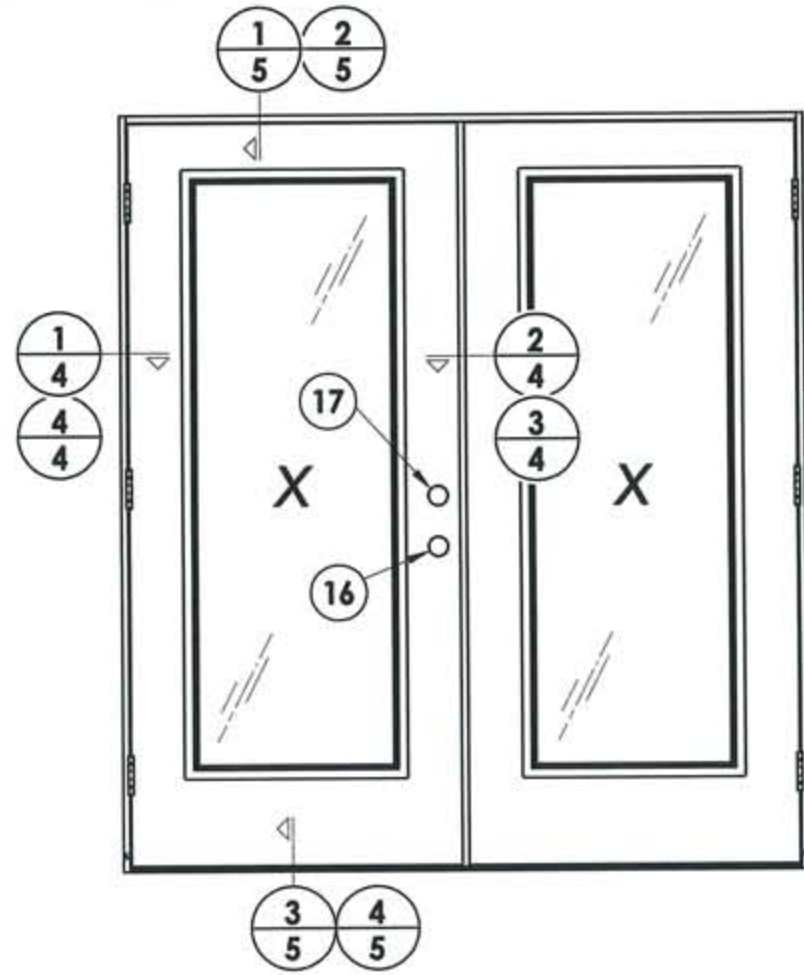
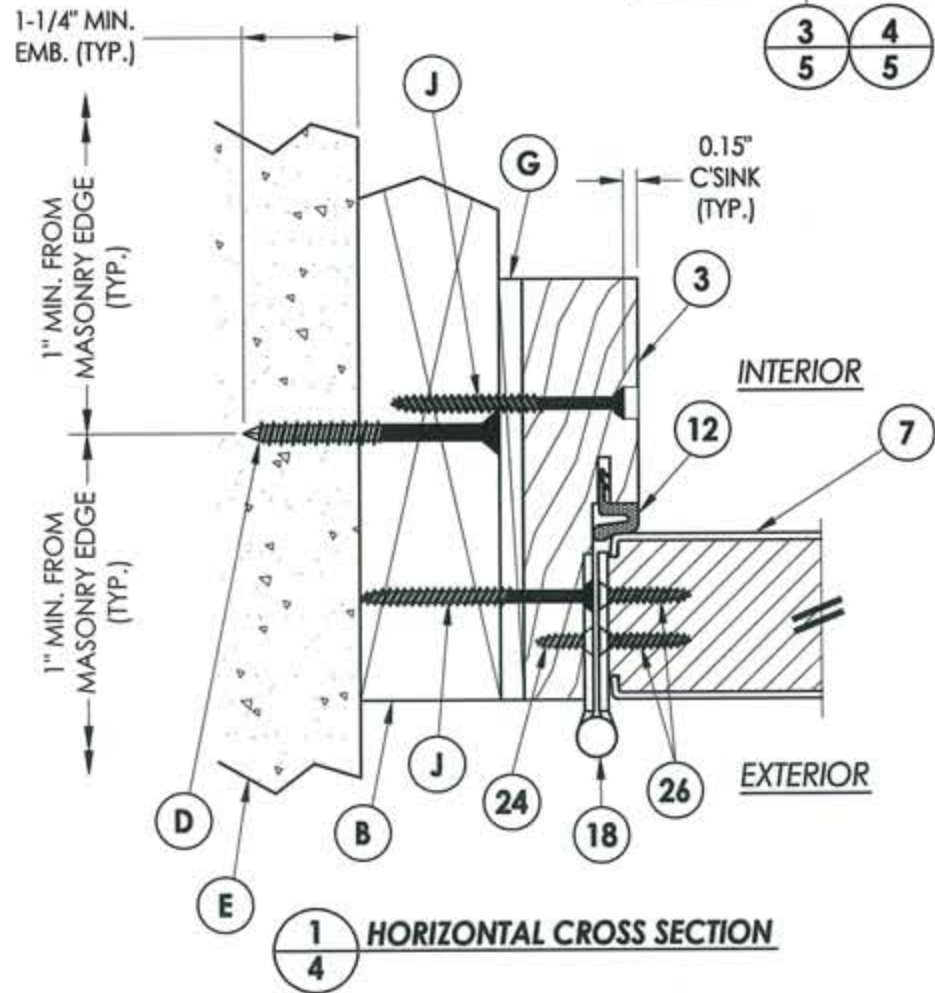
Documents Prepared By:
RW BUILDING CONSULTANTS, INC.
P.O. Box 230 Valrico FL 33595
Phone No.: 813.659.9197
Florida Board of Professional Engineers
Certificate of Authorization No. 9813
LFS
Lyndon F. Schmidt, P.E. No. 43409

PRODUCT:
TRINITY GLASS INT'L
6'8 FLUSH GLAZED

PART OR ASSEMBLY:
DOOR PANEL CONSTRUCTION
DETAILS AND GLAZING DETAILS
(OVAL)

NO	DATE	BY	REVISIONS
2	12/23/08	DWS	DIRECT TO MASONRY ANCHORING
1	09/29/08	JK	ADD OVAL LITED PANEL

DATE: 9/30/08
SCALE: N.T.S.
DWG. BY: JK
CHK. BY: LFS
DRAWING NO.: FL-7960.6
SHEET 3 OF 14



Documents Prepared By:

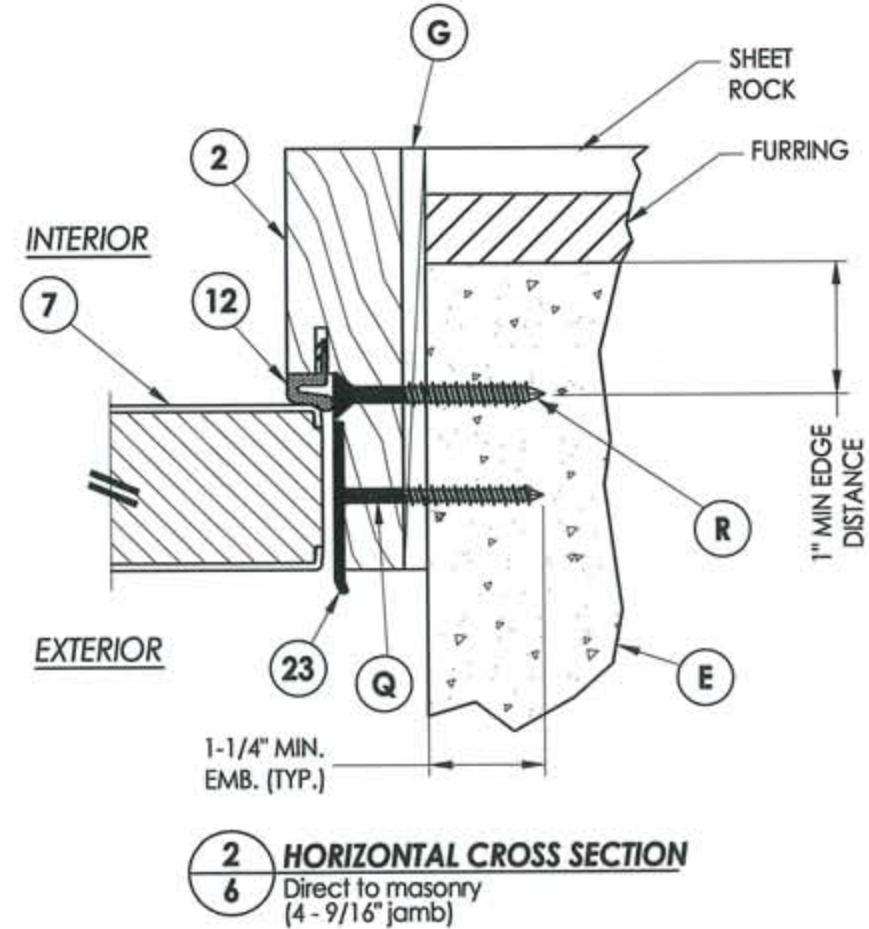
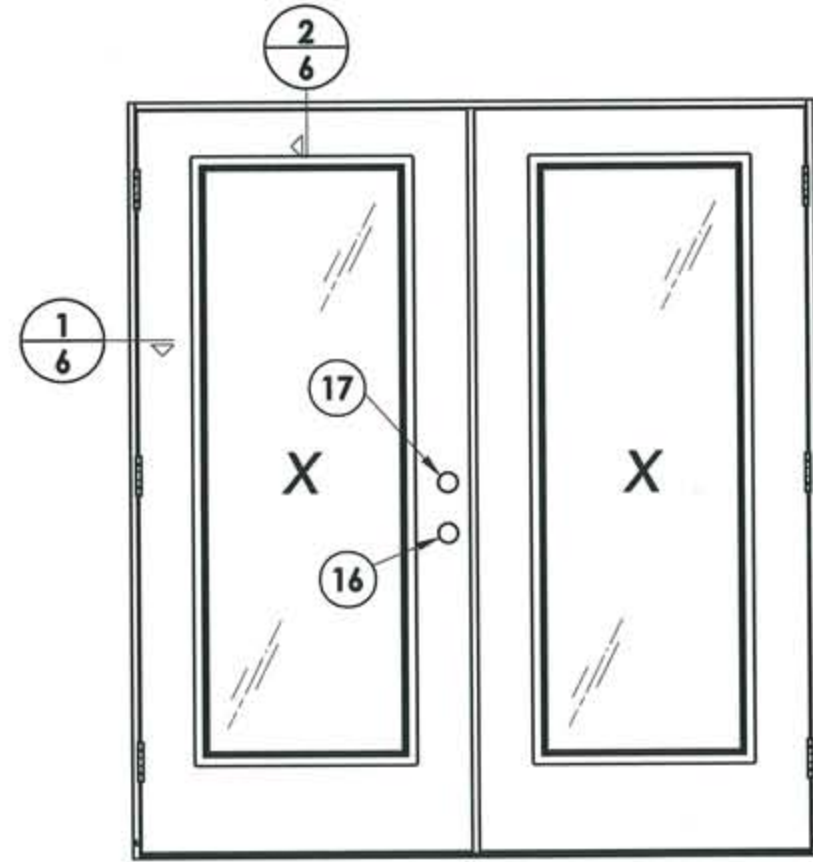
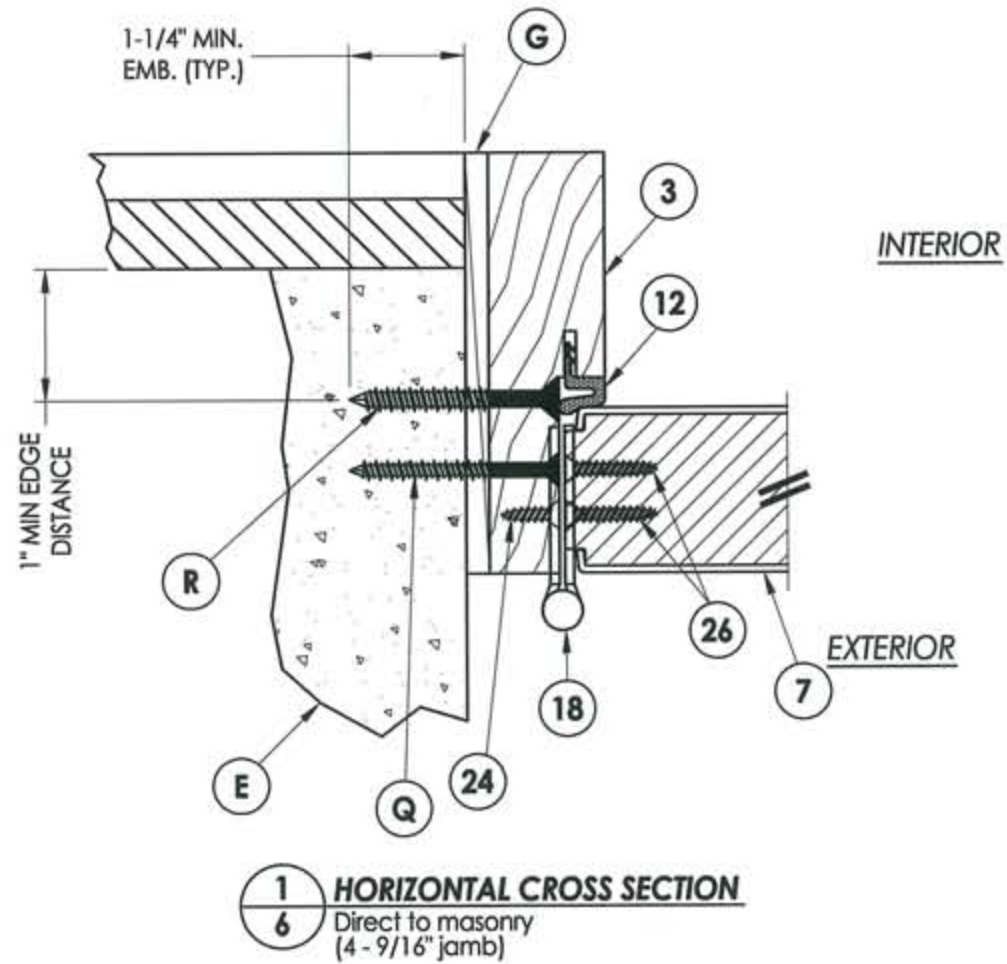
RW BUILDING CONSULTANTS, INC.
P.O. Box 230 Vairico FL 33595
Phone No.: 813.659.9197
Florida Board of Professional Engineers
Certificate Of Authorization No. 9813
LFS 1.8.07
Lyndon F. Schmidt, P.E. No. 43409

PRODUCT: TRINITY GLASS INT'L
6'8 FLUSH GLAZED

PART OR ASSEMBLY:
HORIZONTAL CROSS SECTIONS

NO.	DATE	REVISIONS
2	12/23/08	DIRECT TO MASONRY ANCHORING
1	09/29/08	ADD OVAL LITED PANEL
		DWS
		JK
		BY

DATE: 9/30/08
SCALE: N.T.S.
DWG. BY: JK
CHK. BY: LFS
DRAWING NO.: FL-7960.6
SHEET 4 OF 14



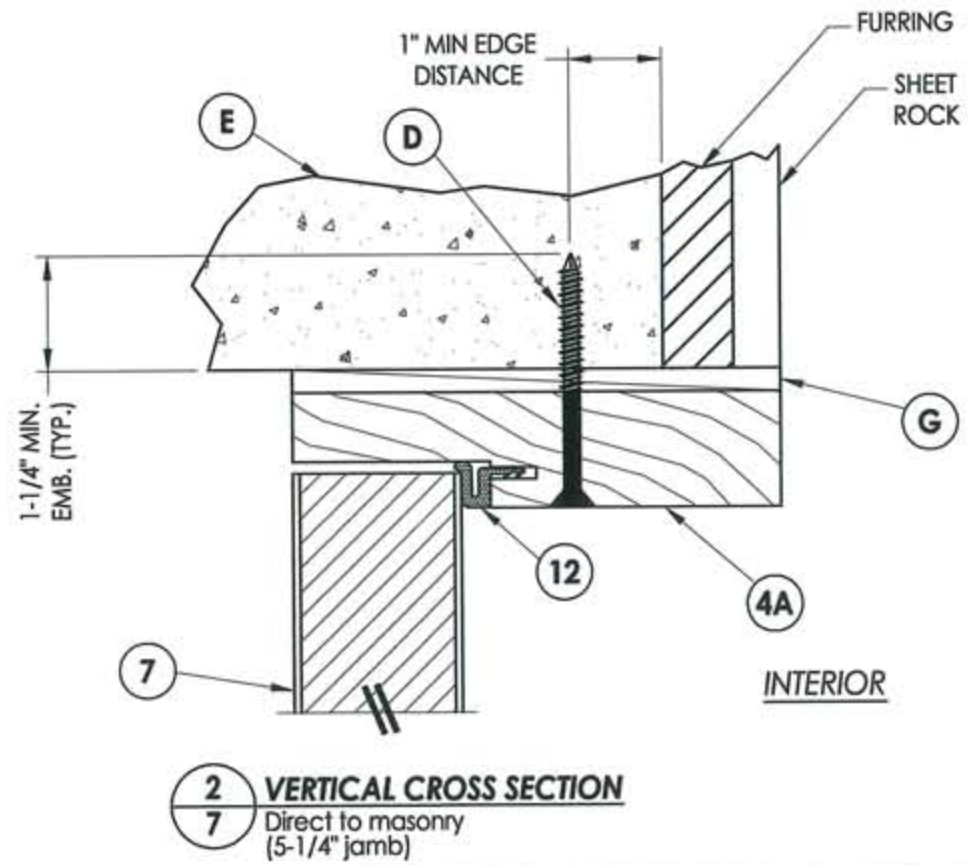
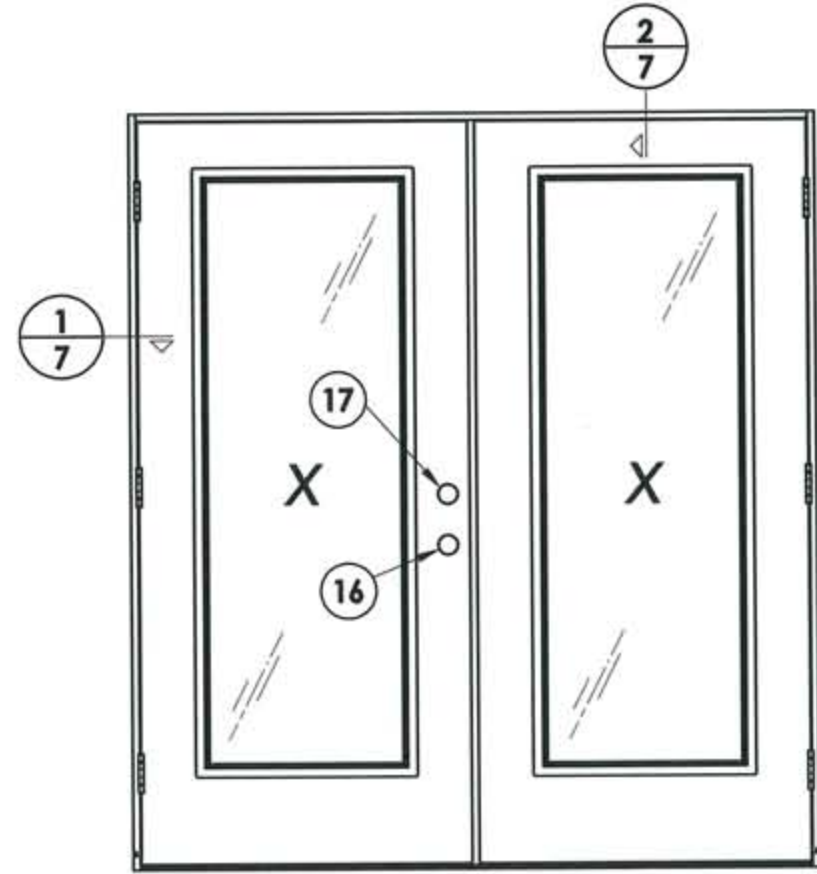
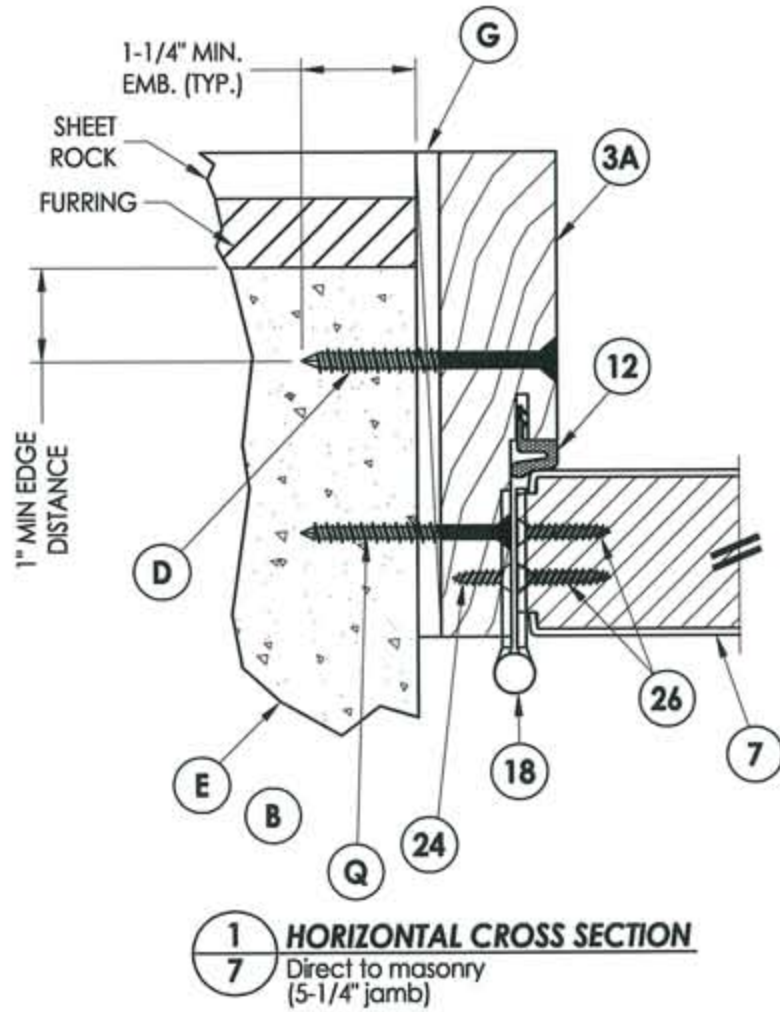
DATE: 9/30/08
SCALE: N.T.S.
DWG. BY: DWS
CHK. BY: LFS
DRAWING NO.: FL-7960.6
SHEET 6 OF 14

PRODUCT: TRINITY GLASS INT'L
6'8 FLUSH GLAZED
PART OR ASSEMBLY: HORIZONTAL & VERTICAL
CROSS SECTIONS

NO.	DATE	REVISIONS
1	12/23/08	DIRECT TO MASONRY ANCHORING
		DWS
		BY

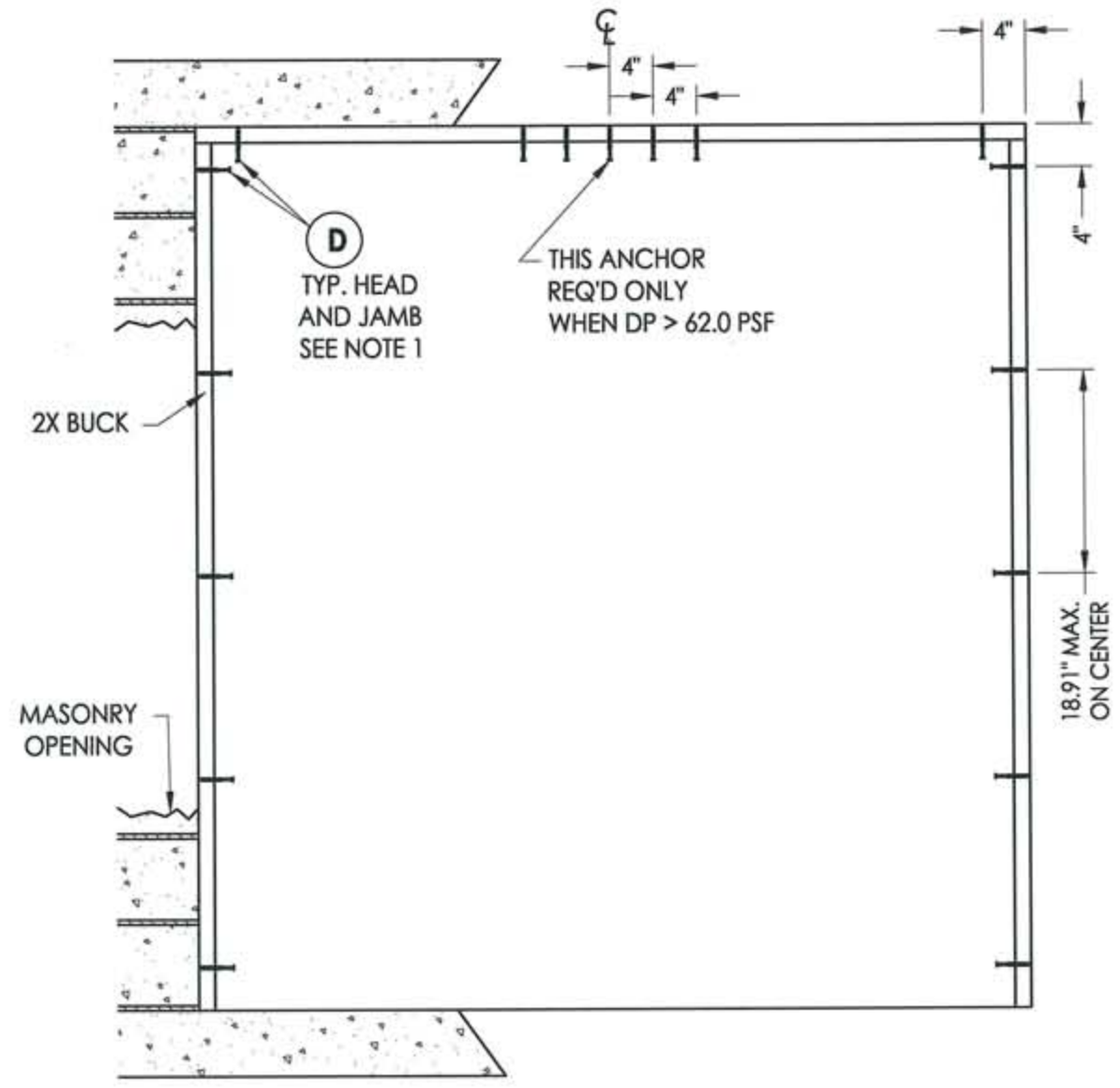
Documents Prepared By:

RW BUILDING CONSULTANTS, INC.
P.O. Box 230 Valrico FL 33595
Phone No.: 813.659.9197
Florida Board of Professional Engineers
Certificate of Authorization No. 9813
LFS 1.8.09
Lyndon F. Schmidt, P.E. No. 43409



PRODUCT:		TRINITY GLASS INT'L 6'8" FLUSH GLAZED	
PART OR ASSEMBLY:		HORIZONTAL & VERTICAL CROSS SECTION	
NO.	DATE	DIRECT TO MASONRY ANCHORING	DWS BY
1.	12/23/08		
REVISIONS			
DATE: 9/30/08			
SCALE: N.T.S.			
DWG. BY: DWS			
CHK. BY: LFS			
DRAWING NO.: FL-7960.6			
SHEET 7 OF 14			

Documents Prepared By:
RW BUILDING CONSULTANTS, INC.
 P.O. Box 230 Vairico FL 33595
 Phone No.: 813.659.9197
 Florida Board of Professional Engineers
 Certificate Of Authorization No. 9813
LFS 1-8-09
 Lyndon F. Schmidt, P.E. No. 43409



BUCK ANCHORING

NOTES:

1. 1/4" Elco Concrete screws anchoring 2x buck require a minimum 1" clearance to masonry edges, a 1-1/4" minimum embedment and a minimum 4" clearance to adjacent concrete screws. Substitution of equal concrete screws from a different supplier may have different edge distance and center distance requirements. Concrete screw locations at the corners and at astragal locations may be adjusted to maintain the minimum edge distance to mortar joints. If Concrete screw locations noted as "MAX. ON CENTER" must be adjusted to maintain the minimum edge distance to mortar joints, additional Concrete screws may be required to ensure the maximum on center dimension is not exceeded.

Documents Prepared By: **RW** BUILDING CONSULTANTS, INC.
 P.O. Box 230 Valrico FL 33595
 Phone No.: 813.659.9197
 Florida Board of Professional Engineers
 Certificate Of Authorization No. 9813
LFS 1.8.09
 Lyndon F. Schmidt, P.E. No. 43409

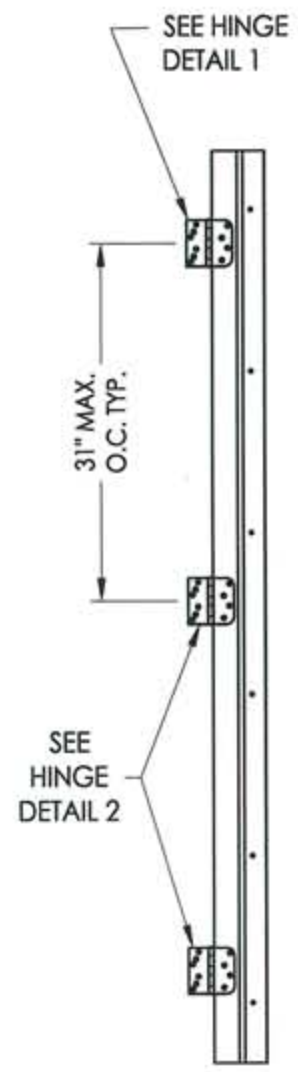
PRODUCT: TRINITY GLASS INT'L
 6 8 FLUSH GLAZED
 PART OR ASSEMBLY:
 BUCK ANCHORING

NO.	DATE	REVISIONS
2.	12/23/08	DIRECT TO MASONRY ANCHORING
1.	09/29/08	ADD OVAL LITED PANEL
		DWS
		JK
		BY

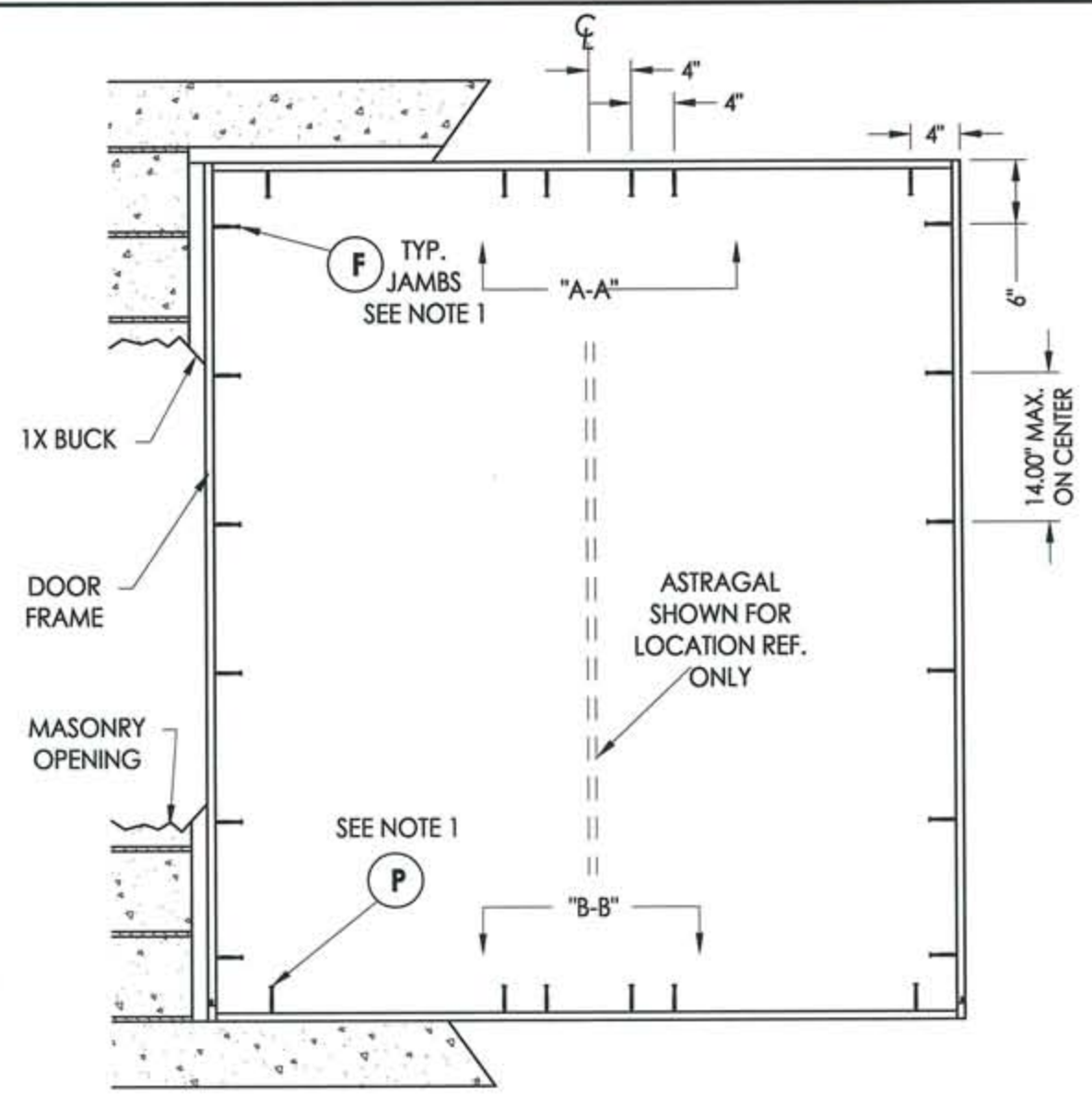
DATE: 9/30/08
 SCALE: N.T.S.
 DWG. BY: JK
 CHK. BY: LFS
 DRAWING NO.: FL-7960.6
 SHEET 8 OF 14

© 2008 R.W. BUILDING CONSULTANTS INC.

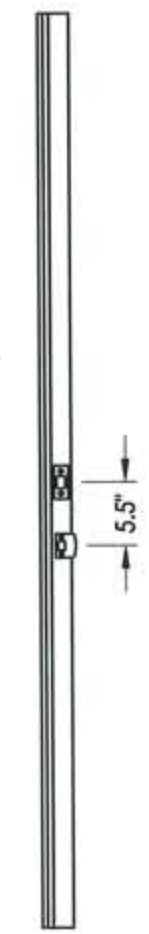
R:\A - Projects\Project Folders\Proj 1001-1100\p1088\D. RWBC Drawings\FL-7960-R1\FL-7960.1-7 REV1.dwg, Model



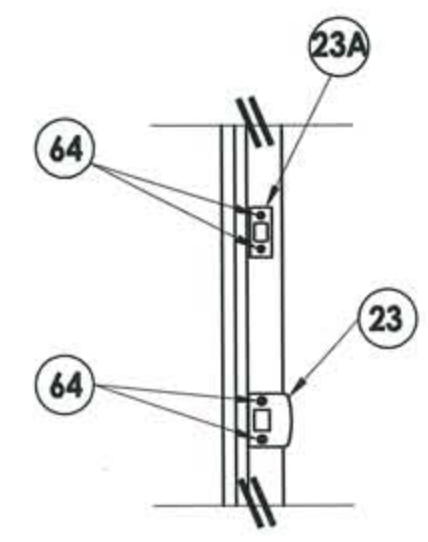
HINGE JAMB



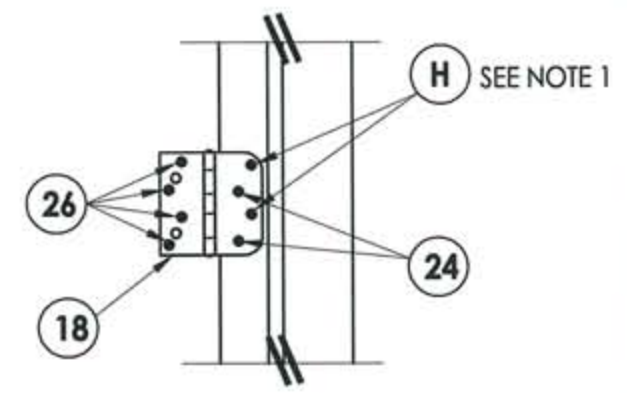
FRAME ANCHORING
Masonry 1X buck construction



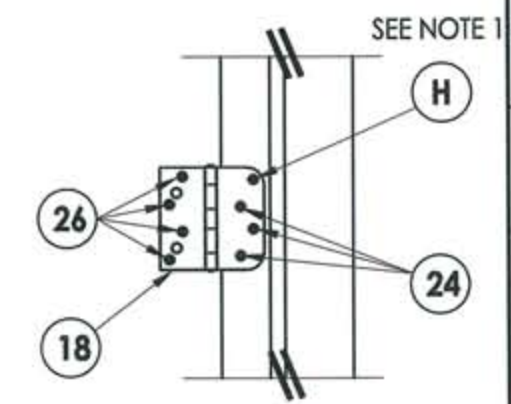
ASTRAGAL



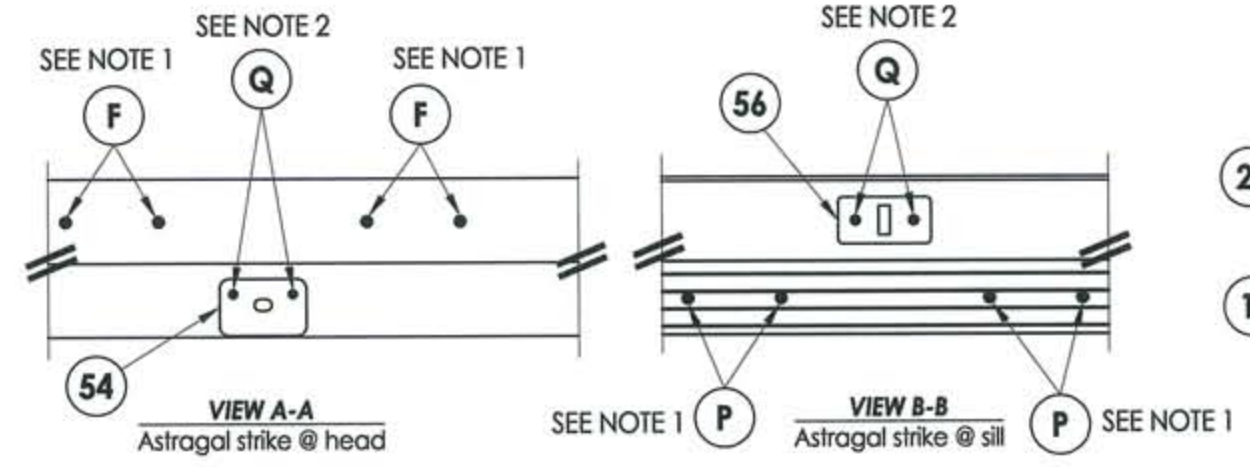
STRIKE PLATE DETAIL
Astragal



HINGE DETAIL 1



HINGE DETAIL 2



VIEW A-A
Astragal strike @ head

VIEW B-B
Astragal strike @ sill

- NOTES:**
- 1/4" ITW concrete screws anchoring frame and/or sill require a minimum 2-1/2" clearance to masonry edges, a 1-1/4" minimum embedment and a minimum 3" clearance to adjacent concrete screws. Substitution of equal concrete screws from a different supplier may have different edge distance and center distance requirements. Concrete screw locations at the corners and at astragal locations may be adjusted to maintain the minimum edge distance to mortar joints. If Concrete screw locations noted as "MAX. ON CENTER" must be adjusted to maintain the minimum edge distance to mortar joints, additional Concrete screws may be required to ensure the maximum on center dimension is not exceeded.
 - 3/16" ITW concrete screws anchoring frame and/or sill require a minimum 2-5/8" clearance to masonry edges, a 1-1/4" minimum embedment and a minimum 2-1/4" clearance to adjacent concrete screws unless otherwise noted by concrete screw manufacturer.

Documents Prepared By:
RW BUILDING CONSULTANTS, INC.
 P.O. Box 230 Vairico FL 33595
 Phone No.: 813.659.9197
 Florida Board of Professional Engineers
 Certificate Of Authorization No. 9813
 Lyndon F. Schmidt, P.E. No. 43409

PRODUCT: TRINITY GLASS INT'L
6 8 FLUSH GLAZED

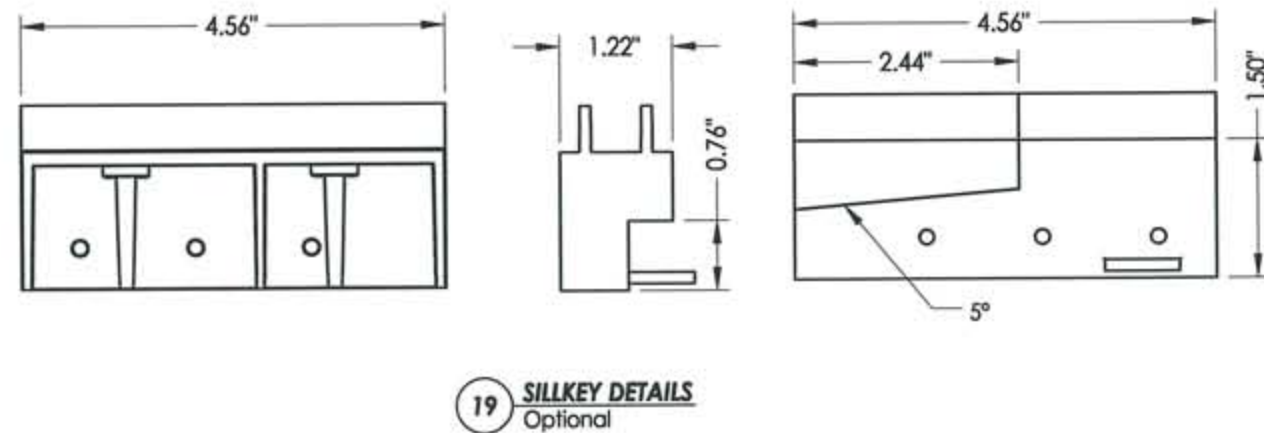
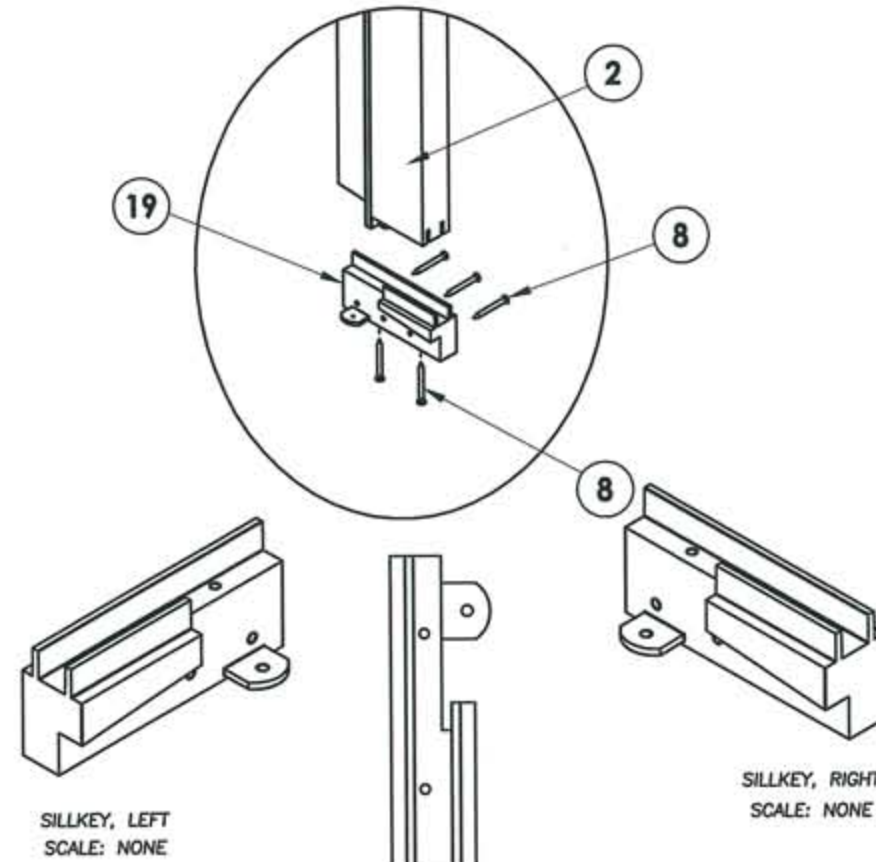
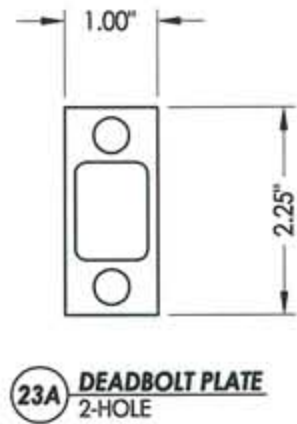
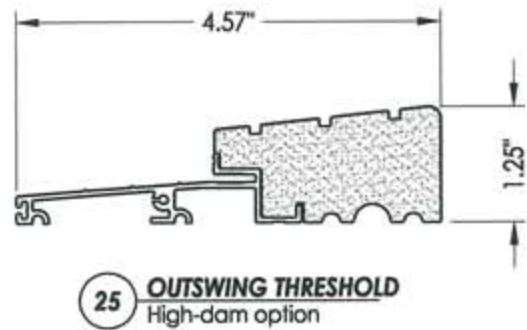
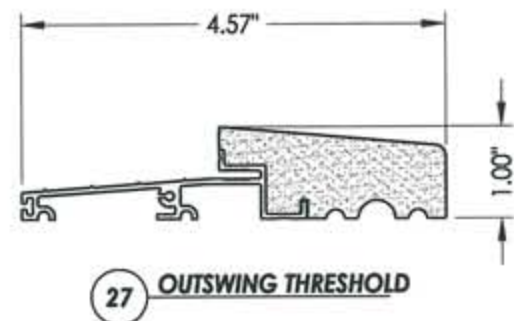
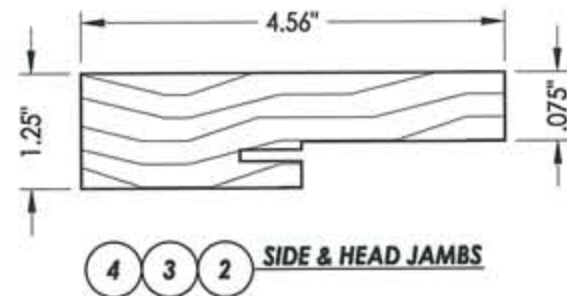
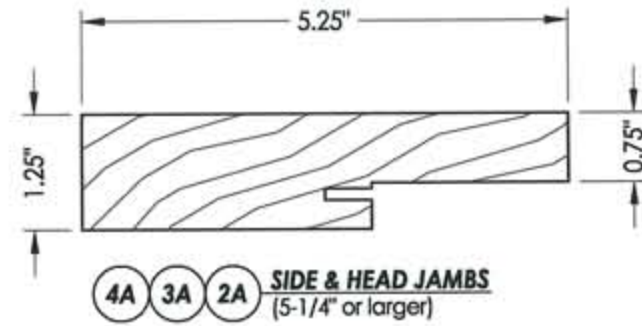
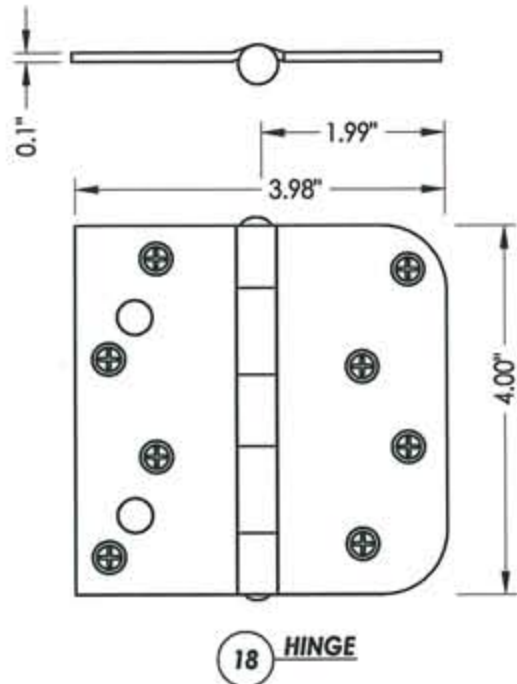
PART OR ASSEMBLY:
 DWS JK BY
 12/23/08 DIRECT TO MASONRY ANCHORING
 09/29/08 ADD OVAL LITED PANEL

1x BUCK MASONRY CONSTRUCTION

NO.	DATE	REVISIONS

DATE: 9/30/08
 SCALE: N.T.S.
 DWG. BY: JK
 CHK. BY: LFS
 DRAWING NO.: FL-7960.6
 SHEET 10 of 14

© 2008 R.W. BUILDING CONSULTANTS INC.



Documents Prepared By:

RW BUILDING CONSULTANTS, INC.
P.O. Box 230 Vairico FL 33595
Phone No.: 813.659.9197
Florida Board of Professional Engineers
Certificate of Authorization No. 9813
LFS 1-8-09
Lyndon F. Schmidt, P.E. No. 43409

PRODUCT:
TRINITY GLASS INT'L
6'8" FLUSH GLAZED

PART OR ASSEMBLY:
COMPONENTS

NO.	DATE	BY
2	12/23/08	DWS
1	09/29/08	JK

REVISIONS

DATE: 9/30/08

SCALE: N.T.S.

DWG. BY: JK

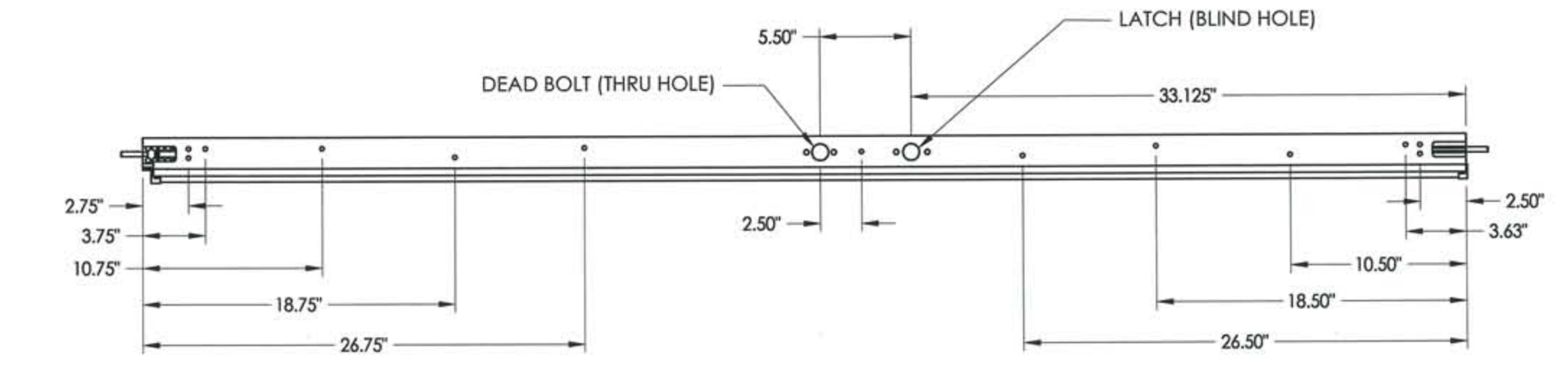
CHK. BY: LFS

DRAWING NO.:

FL-7960.6

SHEET 11 OF 14

R:\A - Projects\Project Folders\Proj 1001-1100\pf1088\1.D. RWBC Drawings\FL-7960-R1\FL-7960.1-7 REV1.dwg, Model



TOP

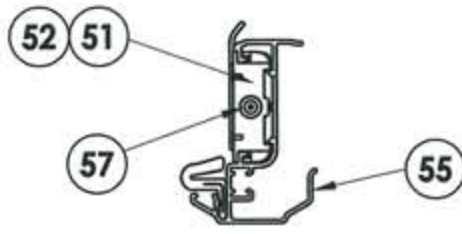
BOTTOM

A-A

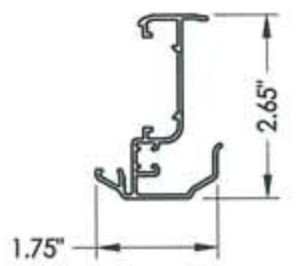
6'8 ALUMINUM ASTRAGAL ASSEMBLY
By Endura Product



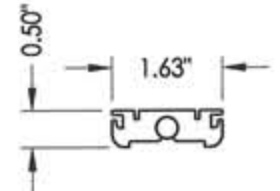
57 SLIDE BOLT ROD
MATL: Steel



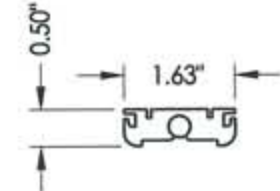
VIEW A-A
Aluminum Astragal Assembly



55 ALUMINUM ASTRAGAL
By Endura Product



52 TOP BOLT RETAINER
MATL: 9-3/4" Aluminum



51 TOP BOLT RETAINER
MATL: 4-3/4" HDPE

Documents Prepared By:

RW BUILDING CONSULTANTS, INC.
P.O. Box 230 Valrico FL 33595
Phone No.: 813.659.9197
Florida Board of Professional Engineers
Certificate Of Authorization No. 9813
LFS 1-8-09
Lyndon F. Schmidt, P.E. No. 43409

PRODUCT:
TRINITY GLASS INT'L
6'8 FLUSH GLAZED

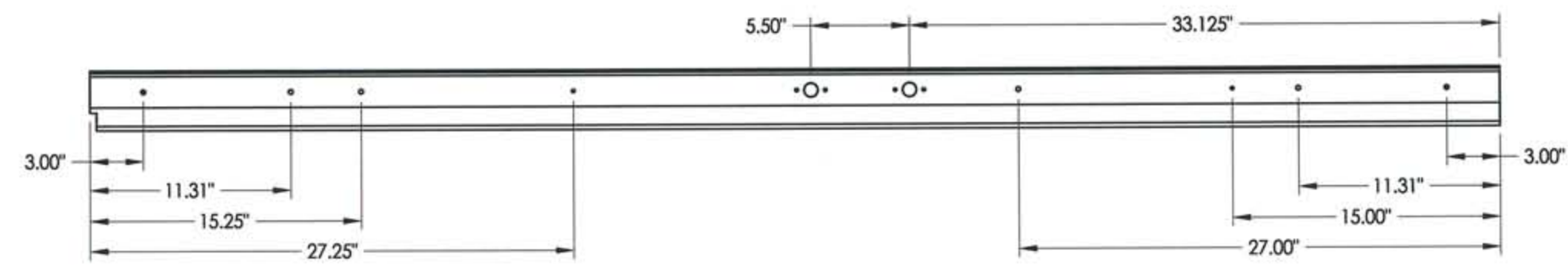
PART OR ASSEMBLY:
ENDURA ASTRAGAL DETAILS

NO.	DATE	REVISIONS
2	12/23/08	DIRECT TO MASONRY ANCHORING
1	09/29/08	ADD OVAL LITED PANEL
		DWS
		JK
		BY

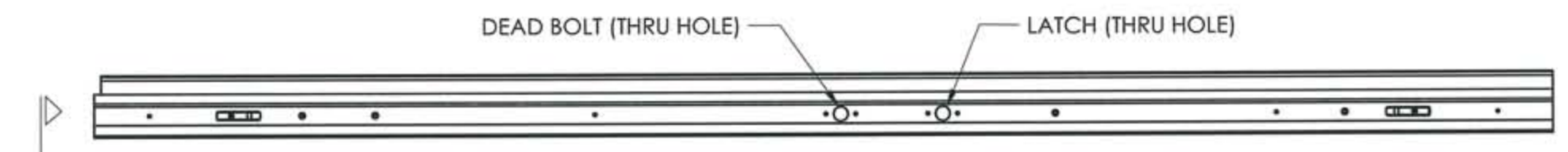
DATE: 9/30/08
SCALE: N.T.S.
DWG. BY: JK
CHK. BY: LFS
DRAWING NO.: FL-7960.6
SHEET 12 of 14

R:\A - Projects\Project Folders\Proj 1001-1100\pf1088\10. RWBC Drawings\FL-7960-R1\FL-7960.1-7 REV1.dwg, Model

TOP

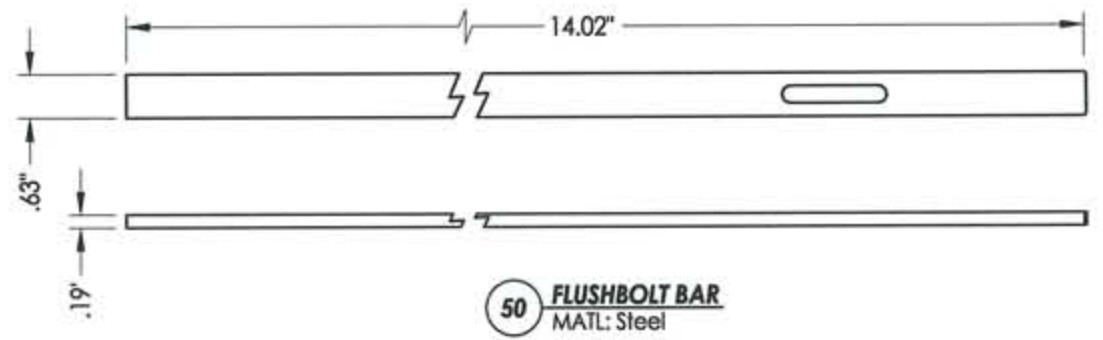


BOTTOM

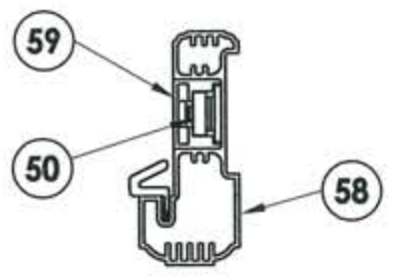


6'8 ALUMINUM ASTRAGAL ASSEMBLY
By TRC

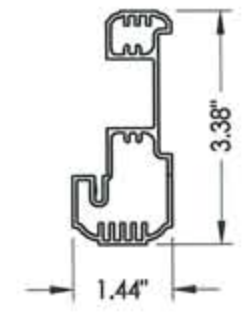
B-B



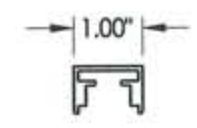
50 FLUSHBOLT BAR
MATL: Steel



VIEW B-B
Aluminum Astragal Assembly



58 ALUMINUM ASTRAGAL
BY TRC



59 ASTRAGAL CHANNEL
BY TRC

Documents Prepared By:

RW BUILDING CONSULTANTS, INC.
P.O. Box 230 Valrico FL 33595
Phone No.: 813.659.9197
Florida Board of Professional Engineers
Certificate Of Authorization No. 9813
LFS 1-8-09
Lyndon F. Schmidt, P.E. No. 43409

PRODUCT:
TRINITY GLASS INT'L
6'8 FLUSH GLAZED

PART OR ASSEMBLY:
TRINITY ASTRAGAL DETAILS

NO.	DATE	REVISIONS
2.	12/23/08	DIRECT TO MASONRY ANCHORING
1	09/29/08	ADD OVAL LITED PANEL
		DWS
		JK
		BY

DATE: 9/30/08
SCALE: N.T.S.
DWG. BY: JK
CHK. BY: LFS
DRAWING NO.: FL-7960.6
SHEET 13 OF 14

R:\A - Projects\Project Folders\Proj 1001-1100\p1088\DWG - RWBC Drawings\FL-7960-R1\FL-7960.1-7 REV1.dwg, Model

BILL OF MATERIALS			BILL OF MATERIALS		
ITEM	DESCRIPTION	MATERIAL	ITEM	DESCRIPTION	MATERIAL
A	1X BUCK SG >= 0.55	WOOD	50	FLUSHBOLT BAR	STEEL
B	2X BUCK SG >= 0.55	WOOD	51	4-3/4" LENGTH TOP BOLT RETAINER	HDPE
D	1/4" X 2-3/4" ELCO PFH CONCRETE SCREW	STEEL	52	9-8/4" LENGTH TOP BOLT RETAINER	ALUMINUM
E	MASONRY - 3,192 PSI MIN. CONCRETE CONFORMING TO ACI 301 OR HOLLOW BLOCK CONFORMING TO ASTM C90	CONCRETE	53	#8 X 1-3/4" PFH SMS	STEEL
F	1/4" X 3-3/4" ITW PFH CONCRETE SCREW	STEEL	54	ASTRAGAL STRIKE @ HEAD	STEEL
G	MAX. 1/4" SHIM SPACE	WOOD	55	ASTRAGAL BY ENDURA PRODUCTS	ALUMINUM
H	1/4" X 3-1/4" ITW PFH CONCRETE SCREW	STEEL	56	ASTRAGAL STRIKE @ SILL	STEEL
J	#10 X 2.5" PFH WS	STEEL	57	SLIDE BOLT ROD	STEEL
L	#8 X 2-1/2" PFH WS	STEEL	58	ASTRAGAL BY TRC	ALUMINUM
P	1/4" X 2-3/4" ITW PFH CONCRETE SCREW	STEEL	59	ASTRAGAL CHANNEL BY TRC	ALUMINUM
Q	3/16" X 3-1/4" ITW CONCRETE SCREW	STEEL	64	#8 x 2" PFH SCREW	STEEL
R	1/4" X 2-1/4" ITW PFH CONCRETE SCREW	STEEL			
2	STRIKE JAMB - FINGER-JOINT PINE (4-9/16") - SG >= 0.42	WOOD			
2A	STRIKE JAMB - FINGER-JOINT PINE (5 - 1/4") - SG >= 0.42	WOOD			
3	HINGE JAMB - FINGER-JOINT PINE (4-9/16") - SG >= 0.42	WOOD			
3A	HINGE JAMB - FINGER-JOINT PINE (5 - 1/4") - SG >= 0.42	WOOD			
4	HEAD - FINGER-JOINT PINE (4-9/16") - SG >= 0.42	WOOD			
4A	HEAD - FINGER-JOINT PINE (5 - 1/4") - SG >= 0.42	WOOD			
7	DOOR PANEL - SEE DOOR PANEL DETAIL SHEET FOR CONSTRUCTION DETAILS	-			
8	#6 X 1-1/4" PFH DRYWALL SCREW	STEEL			
12	WEATHER STRIP QEBD650 Q-LON	-			
16	KWIKSET KEYED ENTRY GRADE 2	STEEL			
17	KWIKSET DEADBOLT GRADE 2	STEEL			
18	3.983" X 4.0" HINGE MIN 0.098" THICK	STEEL			
19	SILLKEY	PC/ASA			
23	STRIKE PLATE	STEEL			
23A	DEADBOLT PLATE	STEEL			
24	#9 X 5/8" PFH WS	STEEL			
25	OUTSWING HIGH-DAM THRESHOLD ALUMINUM W/ COMPOSITE SUBSTRATE	ALUM./ COMP.			
26	#9 X 1.0" PFH WS	STEEL			
27	OUTSWING THRESHOLD ALUMINUM W/ COMPOSITE SUBSTRATE	ALUM./ COMP.			
30	LATCH STILE - SG >= 0.42	LVL/PVC			
31	LVL LOCK BLOCK	LVL			
32	HINGE STILE - SG >= 0.42	LVL/PVC			
33	TOP RAIL - POPLAR LVL & WPC COMBINATION	POPLAR/WPC			
34	BOTTOM RAIL - POPLAR LVL & WPC COMBINATION	POPLAR/WPC			
35	LITE FRAME	PC/ASA			
36	STRUCTURAL SILICONE BY CAPSTONE	SILICONE			
37	DOW 995 STRUCTURAL SILICONE	SILICONE			
38	STRUCTURAL SILICONE BY DONGYANG SILICONE CO.	SILICONE			
39	FIBERGLASS SKIN 0.079" MIN. THICKNESS (Fy = 5,203 PSI MIN.)	FIBERGLASS			
40	#8 X 1-1/8" SELF THREDDING SCREW	STEEL			
41	POLYPROPYLENE & ALUMINUM COMBINATION GLAZING SPACER	POLY./ALUM.			
42	ALUMINUM & BUTYL SPACER SYSTEM	ALUM./BUTYL			
43	PVC & ALUMINUM SPACER SYSTEM	PVC/ ALUM.			

Documents Prepared By: **RW** BUILDING CONSULTANTS, INC.
P.O. Box 230 Valrico FL 33595
Phone No.: 813.659.9197
Florida Board of Professional Engineers
Certificate of Authorization No. 9813
1-7-08-1.8.09
Lyndon F. Schmidt, P.E. No. 43409

PRODUCT: TRINITY GLASS INT'L
6'8 FLUSH GLAZED
PART OR ASSEMBLY:
BILL OF MATERIALS

DWS	JK	BY	NO	DATE	REVISIONS
2	12/23/08				DIRECT TO MASONRY ANCHORING
1	09/29/08				ADD OVAL LITED PANEL

DATE: 9/30/08
SCALE: N.T.S.
DWG. BY: JK
CHK. BY: LFS
DRAWING NO.: FL-7960.6
SHEET 14 OF 14