



4621 192nd STREET EAST TACOMA, WA 98446

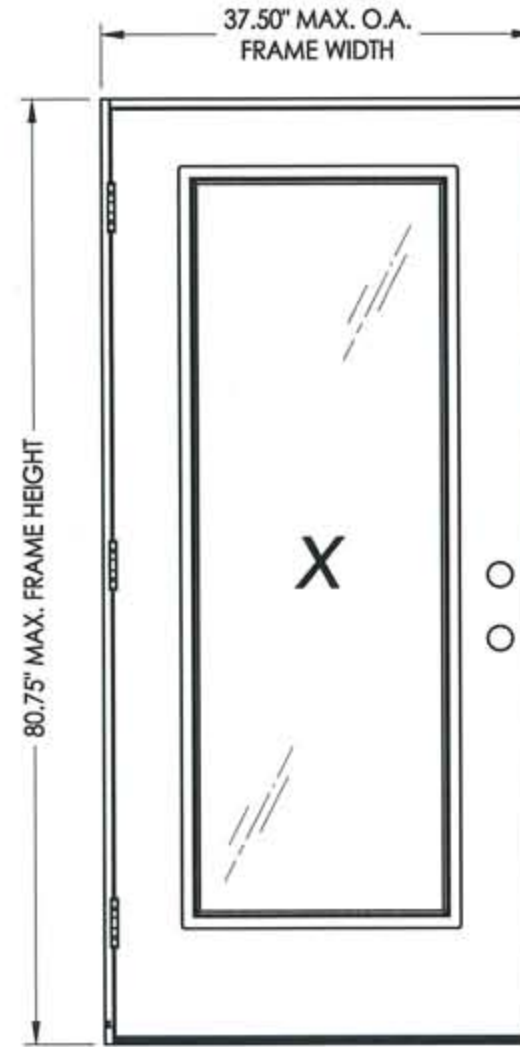
FLUSH-GLAZED FIBERGLASS DOOR OUTSWING "IMPACT"

GENERAL NOTES

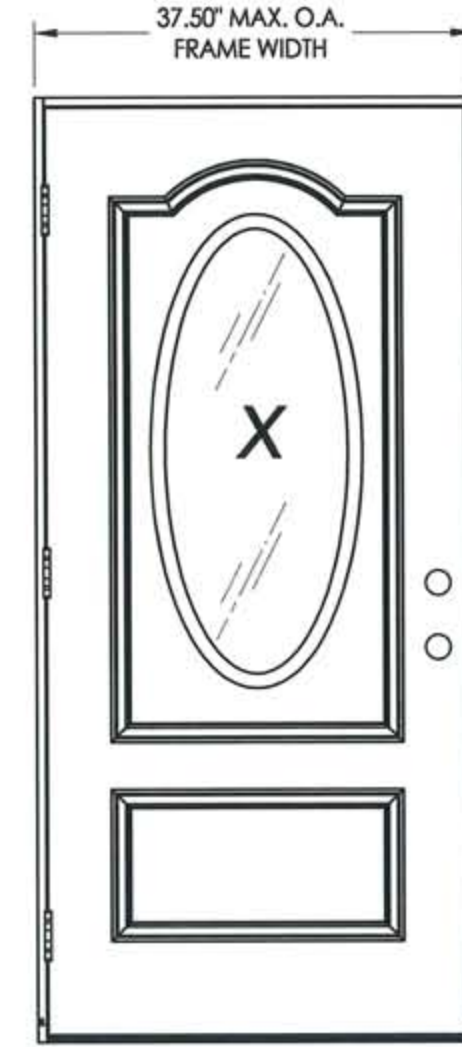
1. This product has been evaluated and is in compliance with the 2007 Florida Building Code (FBC) structural requirements including the "High Velocity Hurricane Zone" (HVHZ).
2. Product anchors shall be as listed and spaced as shown on details. Anchor embedment to base material shall be beyond wall dressing or stucco.
3. When used in the "HVHZ" this product complies with section 1626 of the 2007 FBC and does not require an impact resistant covering.
4. When used in areas requiring wind borne debris protection this product complies with Section 1609.1.2 of the 2007 FBC and does not need to be protected with an impact resistant covering. This product meets missile level "D" and includes Wind Zone 4 as defined in ASTM E1996.
5. For 2x stud framing construction, anchoring of these units shall be the same as that shown for 2x buck masonry construction.
6. Site conditions that deviate from the details of this drawing require further engineering analysis by a licensed engineer or registered architect.
7. This product meets water infiltration requirements for "HVHZ".

TABLE OF CONTENTS

SHEET #	DESCRIPTION
1	Typical elevations, design pressures & general notes
2	Door panel construction details & glazing details (rectangular)
3	Door panel construction details & glazing details (oval)
4	Horizontal cross sections
5	Vertical cross sections
6	Horizontal & vertical cross sections
7	Horizontal & vertical cross sections
8	Buck and frame anchoring - 2X buck masonry construction
9	Frame anchoring - 1X buck masonry construction
10	Components
11	Bill of materials



DOOR WITH RECTANGULAR LITE



DOOR WITH OVAL LITE

SWING	MAX. FRAME DIMENSION	GLASS TYPE	DESIGN PRESSURE (PSF)	
			POSITIVE	NEGATIVE
OUTSWING (RECTANGULAR)	37.50" x 80.75"	G1, G2 & G3	+60.0	-60.0
OUTSWING (OVAL)	37.50" x 80.75"	G1, G4	+75.0	-75.0

Documents Prepared By:

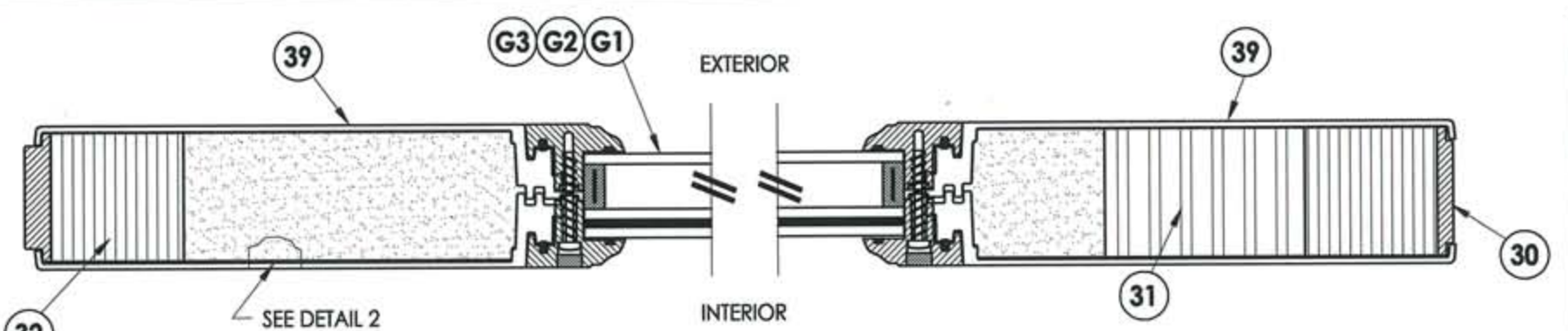
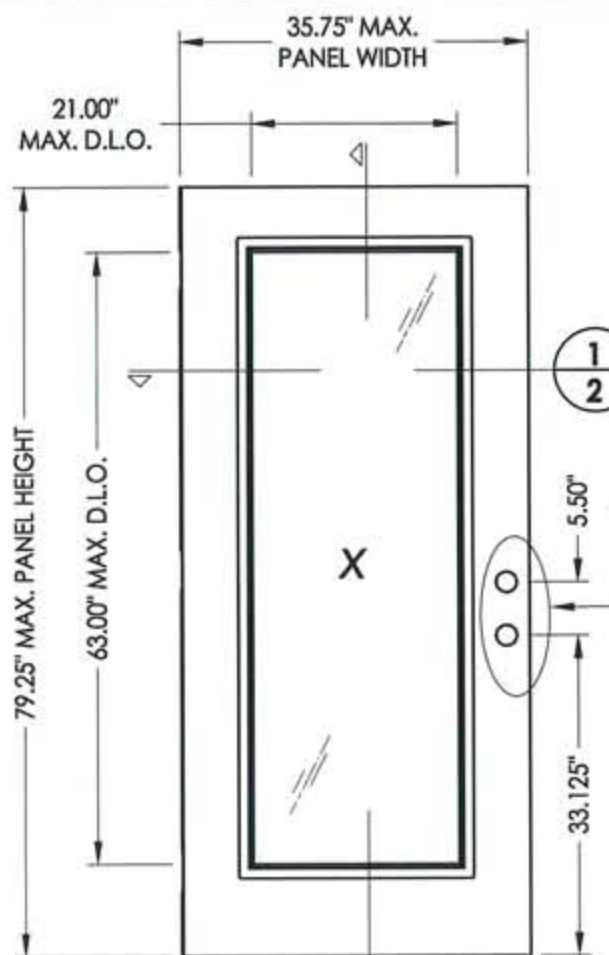
RW BUILDING CONSULTANTS, INC.
P.O. Box 230 Valrico FL 33595
Phone No.: 813.658.9197
Florida Board of Professional Engineers
Certificate Of Authorization No. 9813
1-08-09
Lyndon F. Schmidt, P.E. No. 43409

PRODUCT: TRINITY GLASS INT'L 6'8" FLUSH GLAZED
PART OR ASSEMBLY: TYPICAL ELEVATIONS, DESIGN PRESSURES & GENERAL NOTES

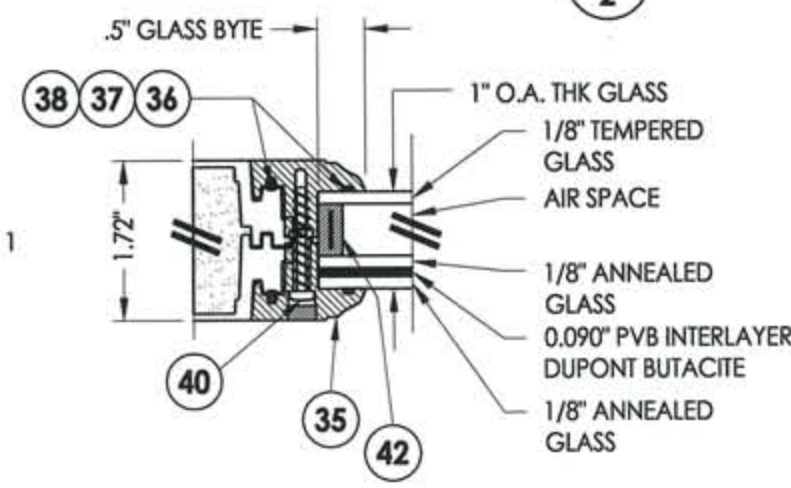
NO.	DATE	REVISIONS
2	12/23/08	DIRECT TO MASONRY ANCHORING
1	09/29/08	ADD OVAL LITED PANEL

DATE: 9/30/08
SCALE: N.T.S.
DWG. BY: JK
CHK. BY: LFS
DRAWING NO.: FL-7960.1
SHEET 1 of 11

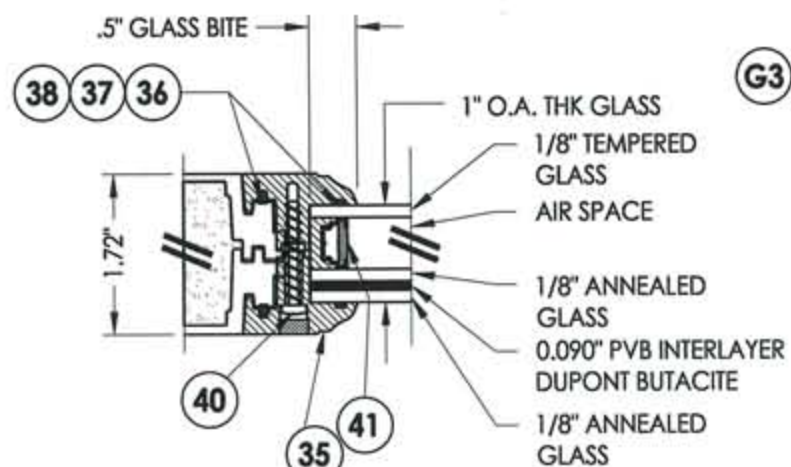
R:\A - Projects\Project Folders\Proj 1001-1100\p1088\1.D. RWBC Drawings\FL-7960-R1\FL-7960.1-7 REV1.dwg, Model



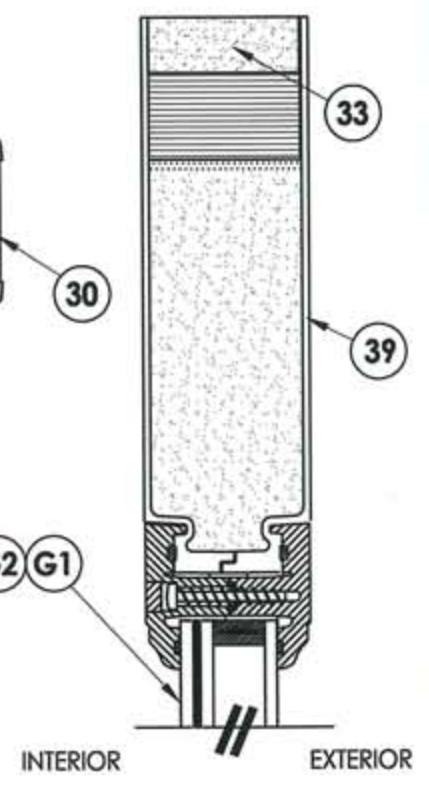
1
2 HORIZONTAL CROSS SECTION



G1 GLAZING DETAIL

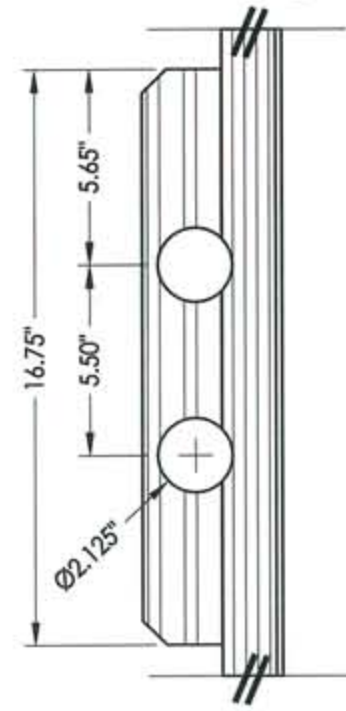


G2 GLAZING DETAIL

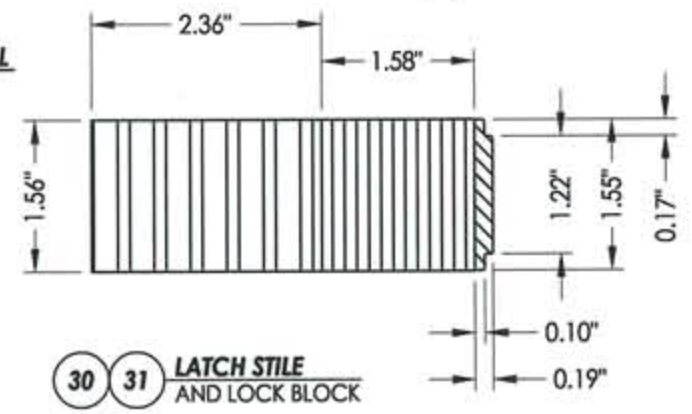


2
2 VERTICAL CROSS SECTION

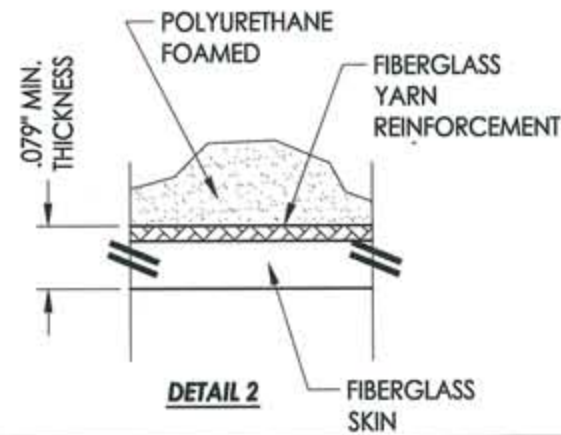
7 DOOR PANEL Full life



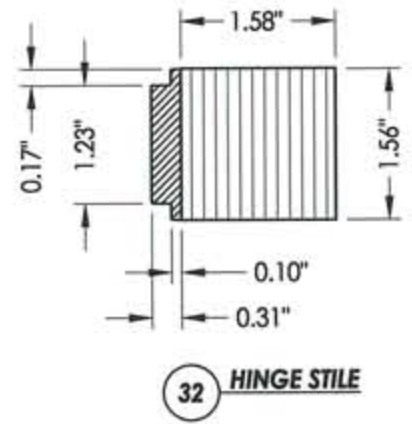
DETAIL 1



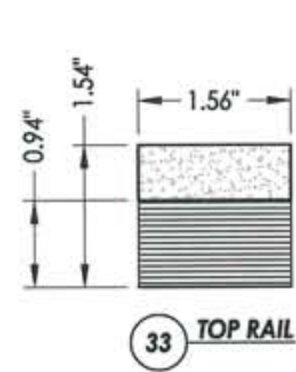
30 31 LATCH STILE AND LOCK BLOCK



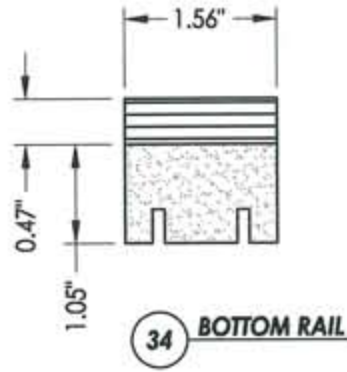
DETAIL 2



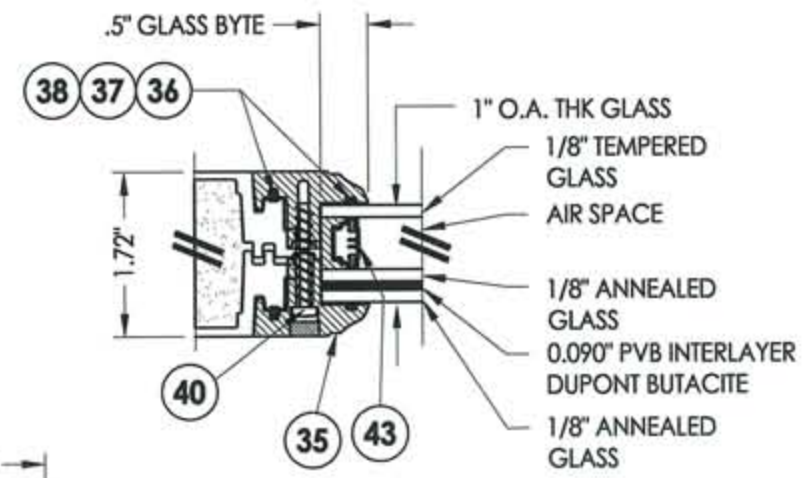
32 HINGE STILE



33 TOP RAIL



34 BOTTOM RAIL



G3 GLAZING DETAIL

Documents Prepared By:

RW BUILDING CONSULTANTS, INC.
P.O. Box 230 Valrico FL 33595
Phone No.: 813.659.9197
Florida Board of Professional Engineers
Certificate of Authorization No. 9813
1-8-09
Lyndon F. Schmidt, P.E. No. 43409

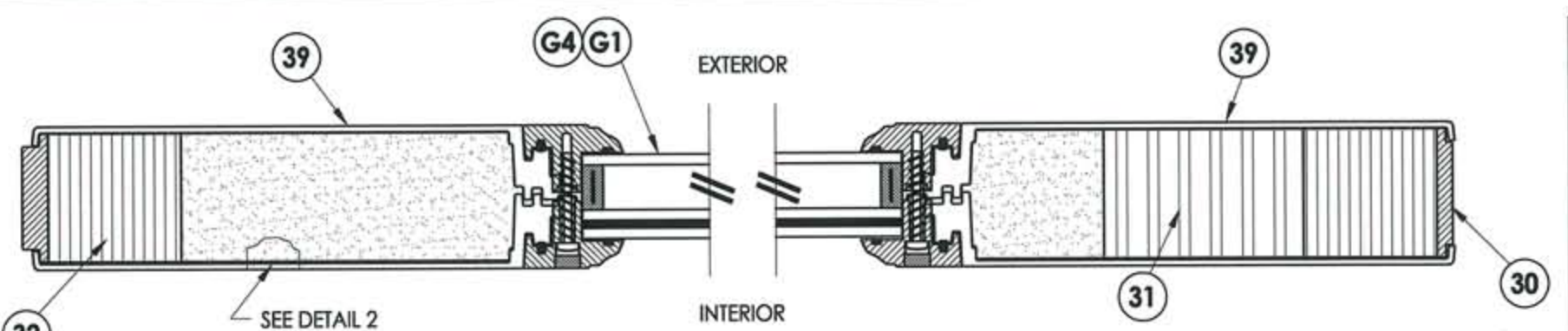
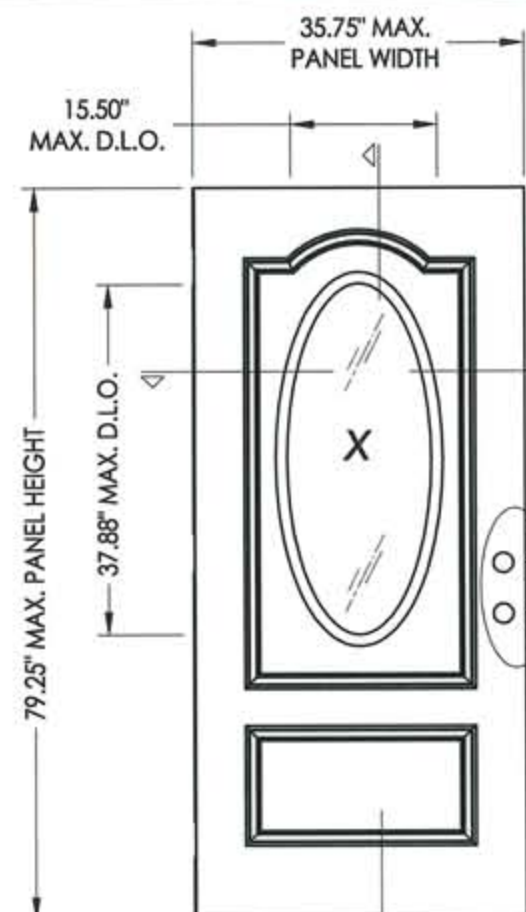
PRODUCT:
TRINITY GLASS INT'L
6\"/>

PART OR ASSEMBLY:
DOOR PANEL CONSTRUCTION
DETAILS AND GLAZING DETAILS
(RECTANGULAR)

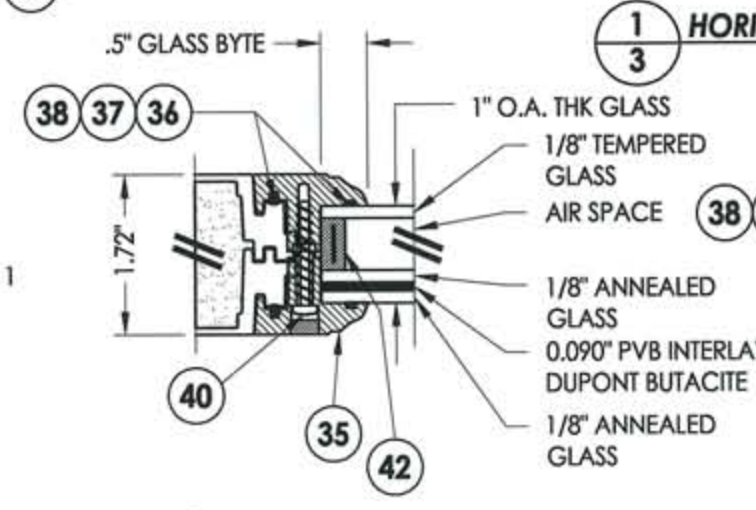
NO.	DATE	BY	REVISIONS
2	12/23/08	DWS	DIRECT TO MASONRY ANCHORING
1	09/29/08	JK	ADD OVAL LITED PANEL

DATE: 9/30/08
SCALE: N.T.S.
DWG. BY: JK
CHK. BY: LFS
DRAWING NO.: FL-7960.1
SHEET 2 of 11

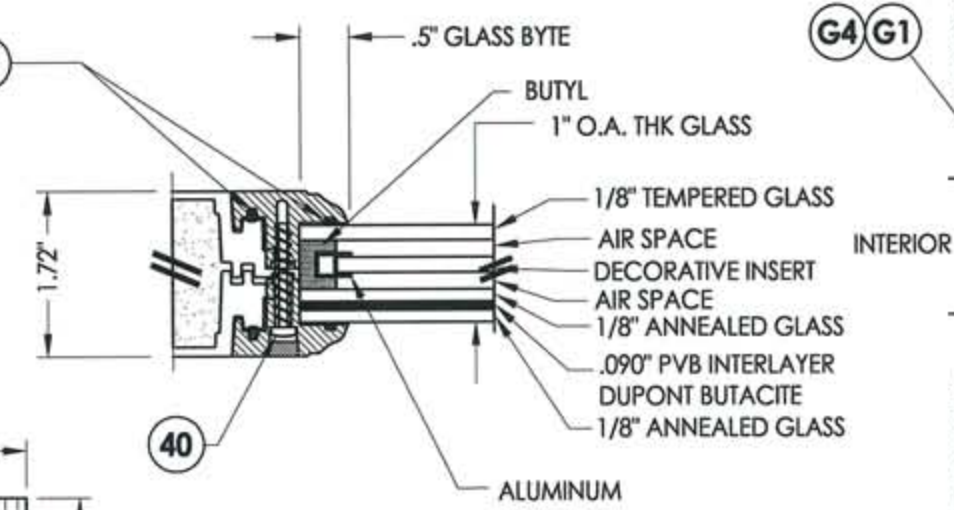
R:\A - Projects\Project Folders\Proj 1001-1100\p1088\D. RWBC Drawings\FL-7960-R1\VL-7960.1-7 REV1.dwg, Model



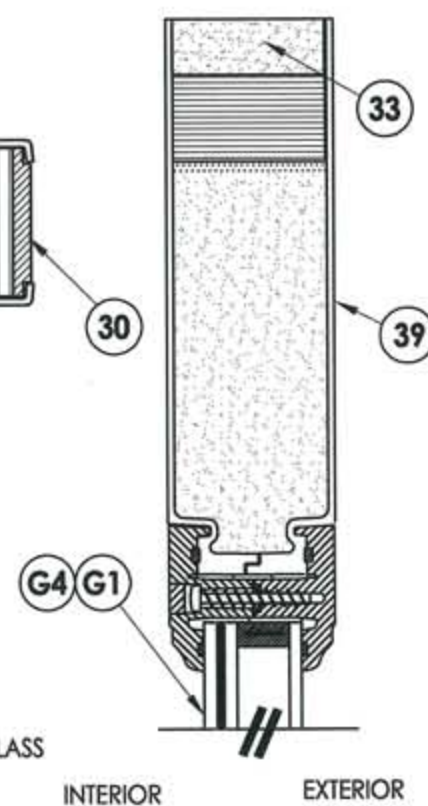
1
3 HORIZONTAL CROSS SECTION



G1 GLAZING DETAIL

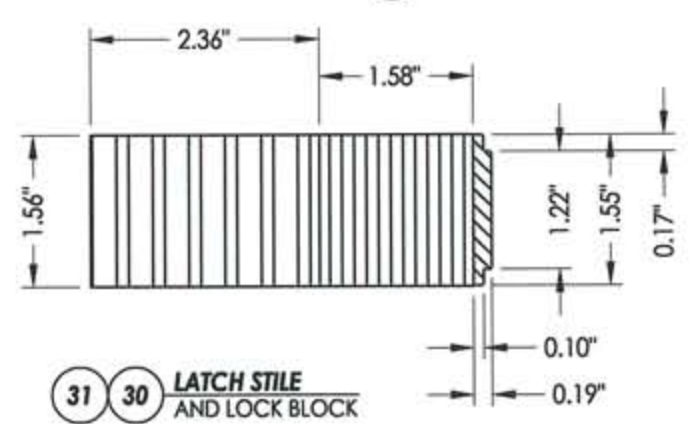
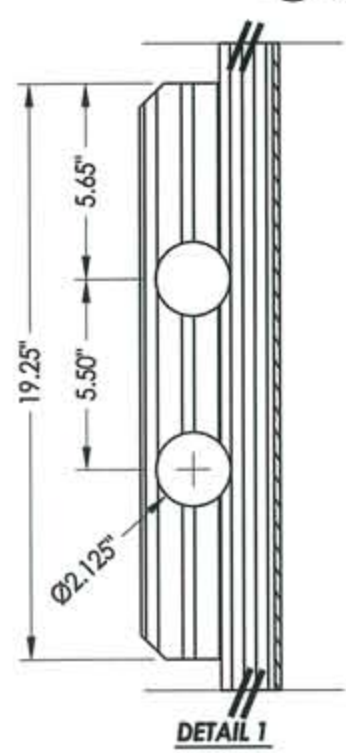


G4 GLAZING DETAIL

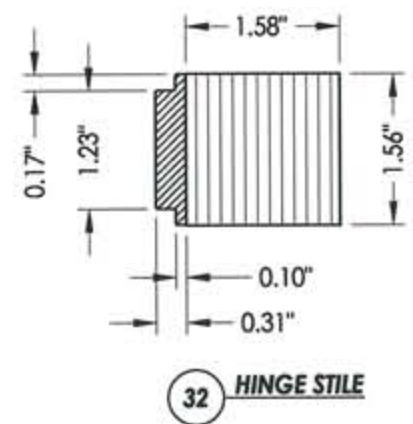


2
3 VERTICAL CROSS SECTION

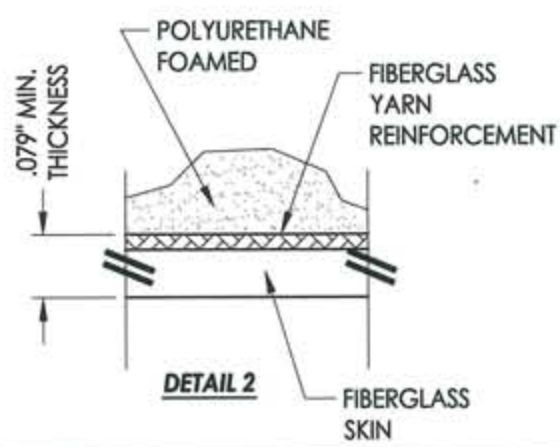
2
3
7 DOOR PANEL
Oval lite



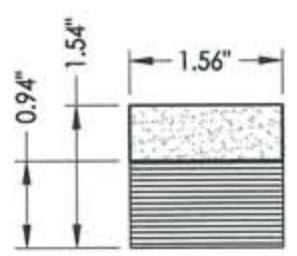
31 **30** LATCH STILE
AND LOCK BLOCK



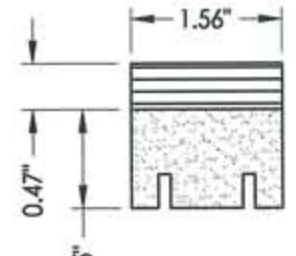
32 HINGE STILE



DETAIL 2



33 TOP RAIL

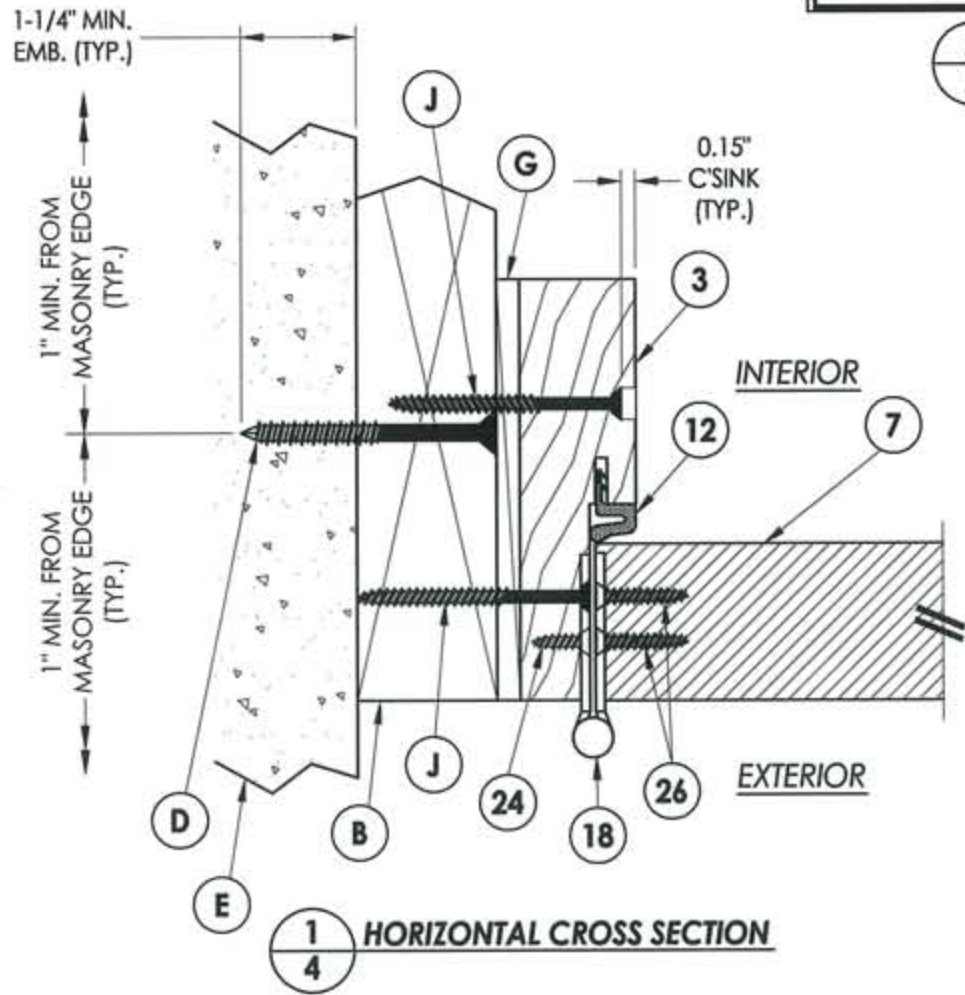


34 BOTTOM RAIL

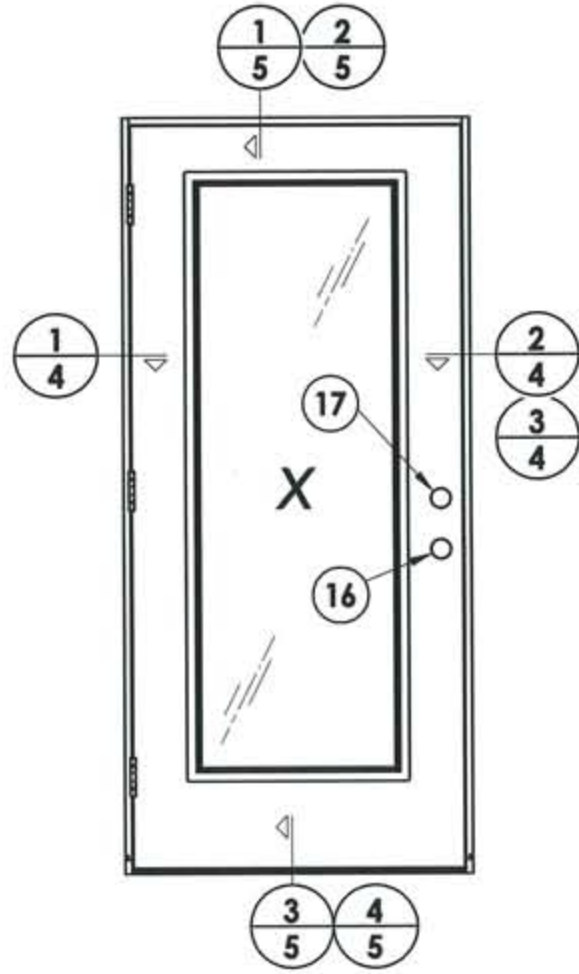
Documents Prepared By: **RW** BUILDING CONSULTANTS, INC.
P.O. Box 230 Vairco FL 33595
Phone No.: 813.659.9197
Florida Board of Professional Engineers
Certificate Of Authorization No. 9813
1-8-09
Lyndon F. Schmidt, P.E. No. 43409

PRODUCT:	TRINITY GLASS INT'L 6 8 FLUSH GLAZED
PART OR ASSEMBLY:	DOOR PANEL CONSTRUCTION DETAILS AND GLAZING DETAILS (OVAL)
DATE:	9/30/08
SCALE:	N.T.S.
DWG. BY:	JK
CHK. BY:	LFS
DRAWING NO.:	FL-7960.1
SHEET	3 of 11

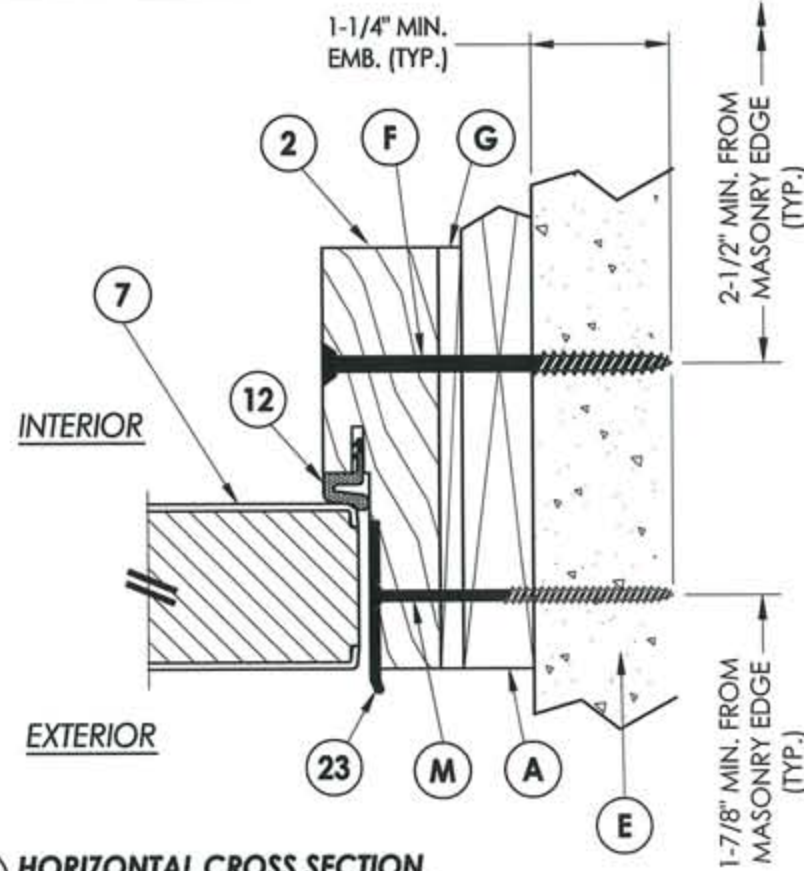
NO.	DATE	REVISIONS
2	12/23/08	DIRECT TO MASONRY ANCHORING
1	09/29/08	ADD OVAL LITED PANEL



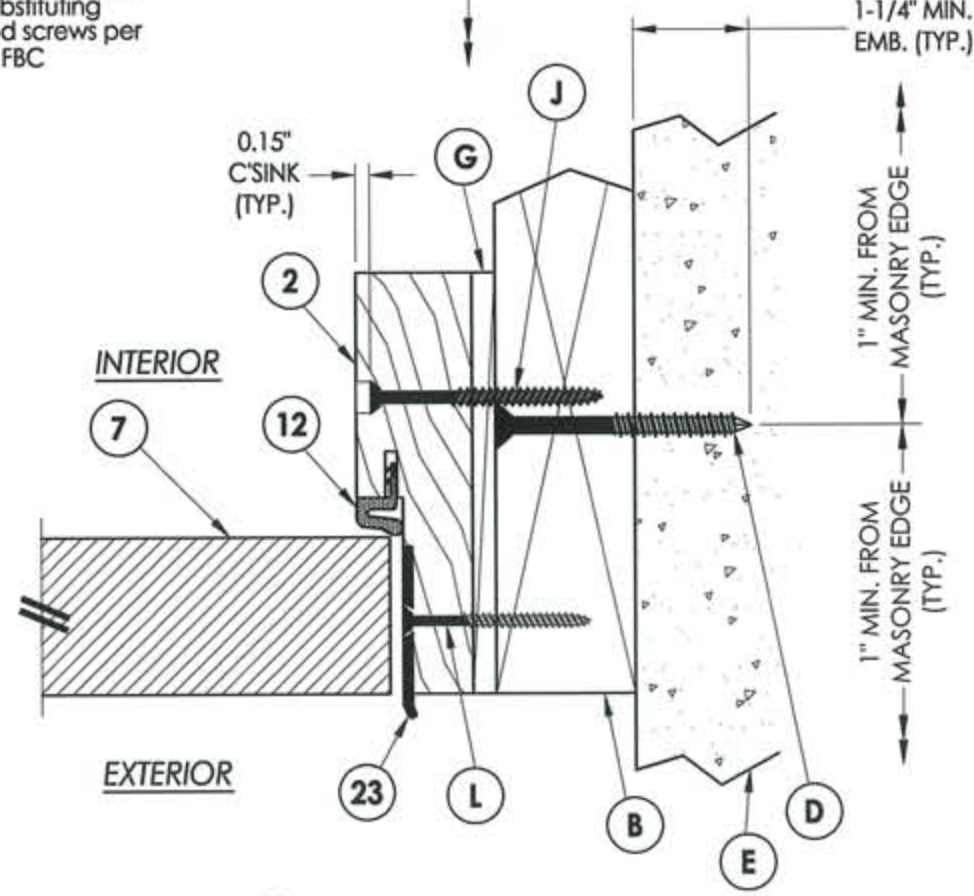
1
4 HORIZONTAL CROSS SECTION



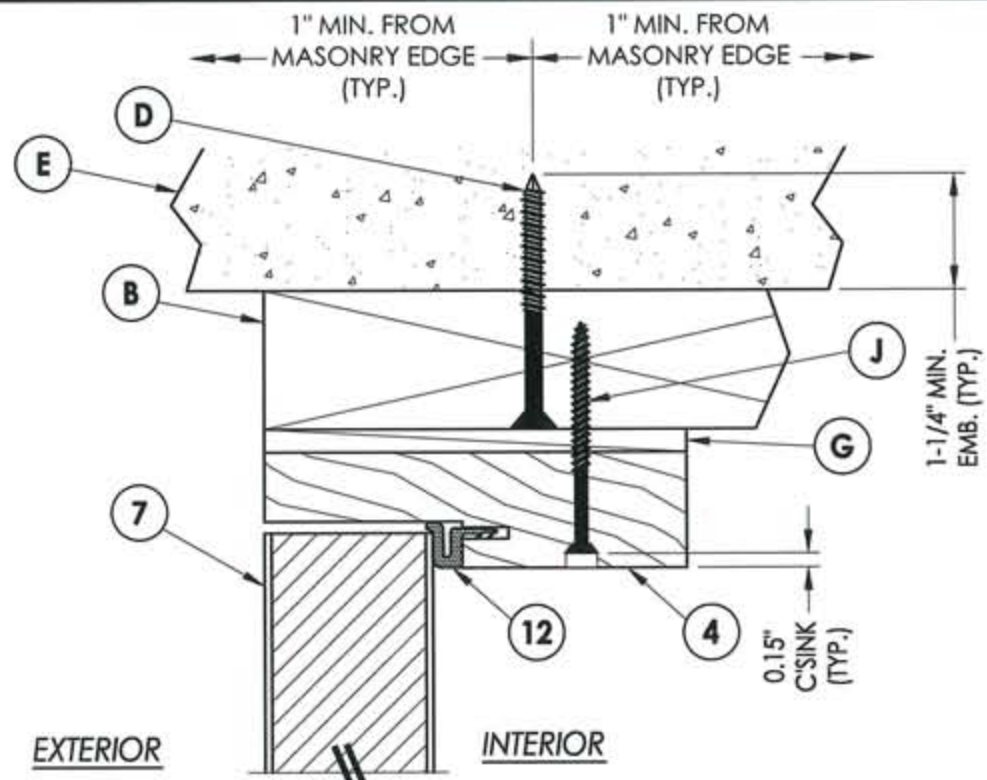
3
4 HORIZONTAL CROSS SECTION
Shown w/1X sub-buck substituting concrete screws for wood screws per Section 1714.5.4.2 of the FBC



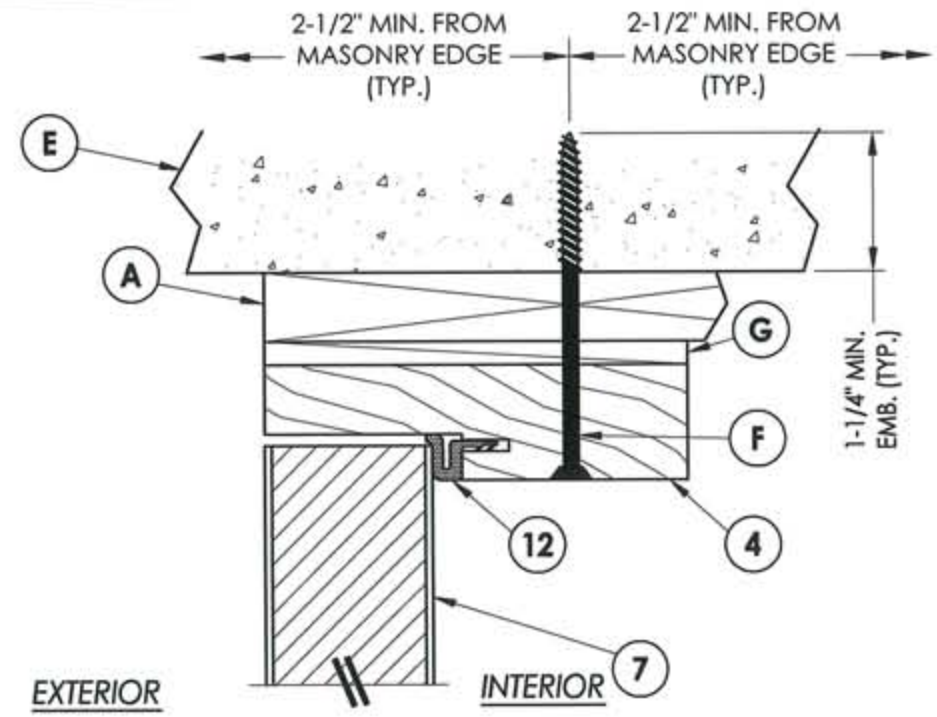
2
4 HORIZONTAL CROSS SECTION



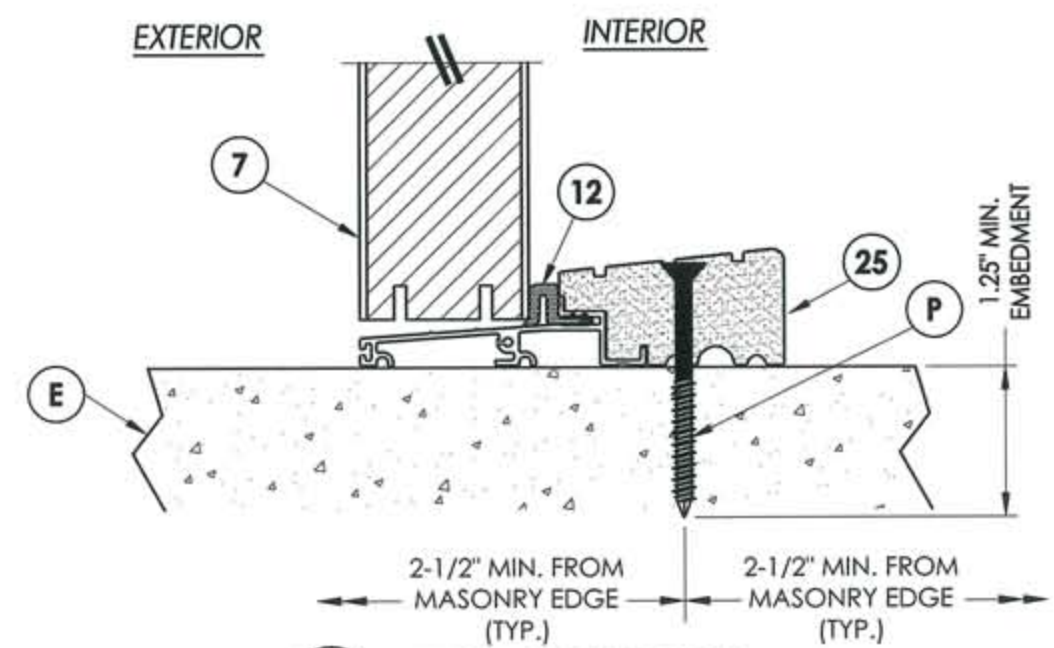
Documents Prepared By:		R.W. BUILDING CONSULTANTS, INC. P.O. Box 230 Vairico FL 33595 Phone No.: 813.659.9197	
PRODUCT:		TRINITY GLASS INT'L 6"8 FLUSH GLAZED	
PART OR ASSEMBLY:		HORIZONTAL CROSS SECTIONS	
DATE:	9/30/08	NO.	DATE
SCALE:	N.T.S.	NO.	DATE
DWG. BY:	JK	NO.	DATE
CHK. BY:	LFS	NO.	DATE
DRAWING NO.:	FL-7960.1	NO.	DATE
SHEET	4 of 11	NO.	DATE



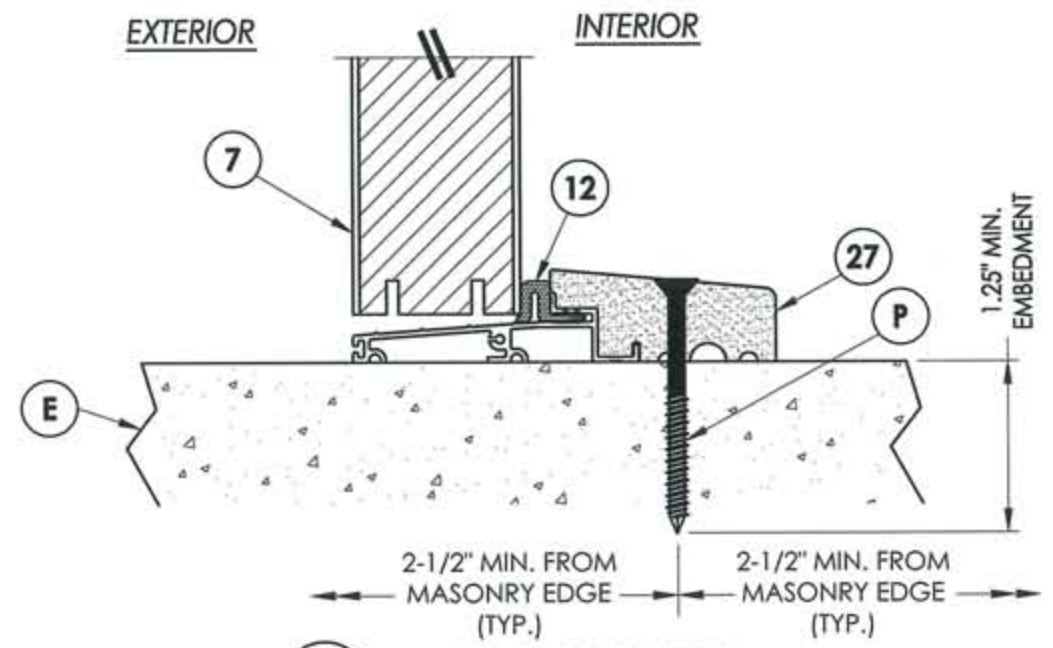
1 VERTICAL CROSS SECTION
5



2 VERTICAL CROSS SECTION
5 Shown w/1X sub-buck substituting concrete screws for wood screws per Section 1714.5.4.2 of the FBC

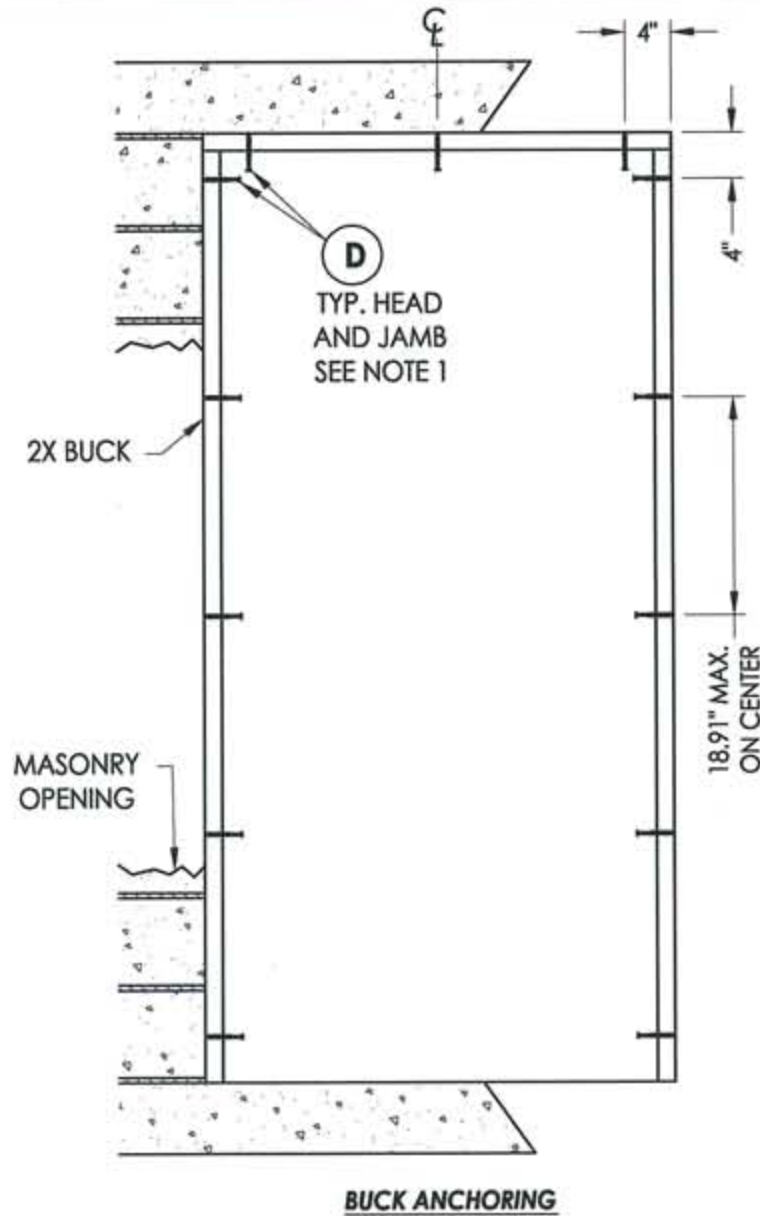


3 VERTICAL CROSS SECTION
5 Outswing sill - high dam

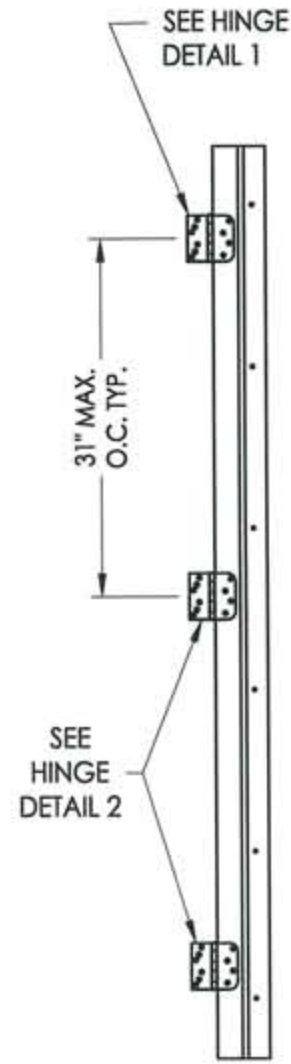


4 VERTICAL CROSS SECTION
5 Outswing sill

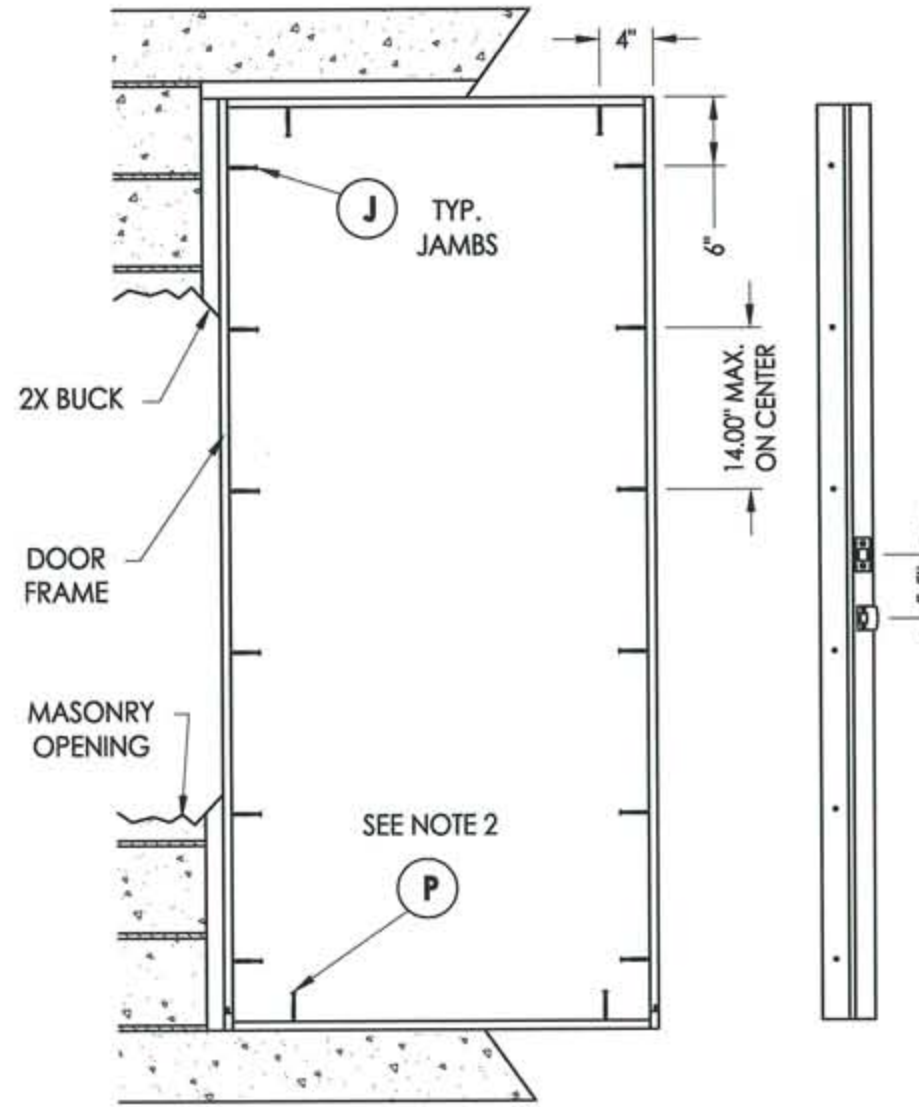
Documents Prepared By:		RW BUILDING CONSULTANTS, INC. P.O. Box 230 Valrico FL 33595 Phone No.: 813.659.9197										
PRODUCT:		TRINITY GLASS INT'L 6 8 FLUSH GLAZED										
PART OR ASSEMBLY:		VERTICAL CROSS SECTIONS										
DATE:		9/30/08										
SCALE:		N.T.S.										
DWG. BY:		JK										
CHK. BY:		LFS										
DRAWING NO.:		FL-7960.1										
SHEET		5 OF 11										
REVISIONS		<table border="1"> <thead> <tr> <th>NO.</th> <th>DATE</th> <th>BY</th> </tr> </thead> <tbody> <tr> <td>2.</td> <td>12/23/08</td> <td>DWS</td> </tr> <tr> <td>1</td> <td>09/29/08</td> <td>JK</td> </tr> </tbody> </table>		NO.	DATE	BY	2.	12/23/08	DWS	1	09/29/08	JK
NO.	DATE	BY										
2.	12/23/08	DWS										
1	09/29/08	JK										
Florida Board of Professional Engineers Certificate of Authorization No. 9813		1-8-09 Lyndon F. Schmidt, P.E. No. 43409										



BUCK ANCHORING

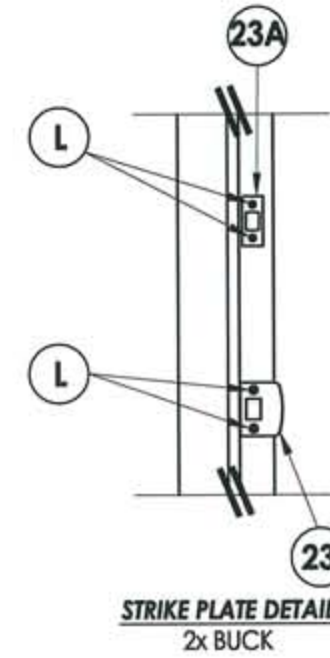


HINGE JAMB

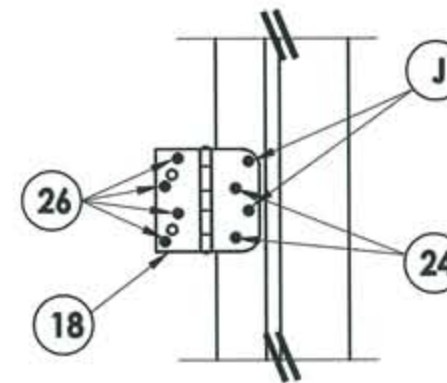


FRAME ANCHORING
Masonry 2X buck construction

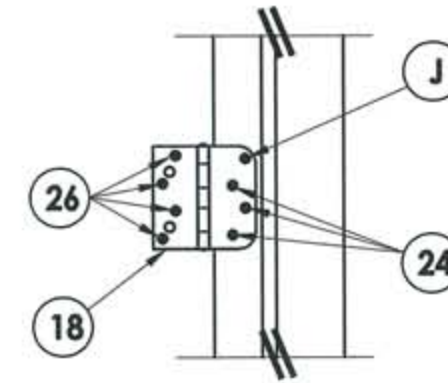
STRIKE JAMB



STRIKE PLATE DETAIL
2x BUCK



HINGE DETAIL 1



HINGE DETAIL 2

NOTES:

1. 1/4" Elco Concrete screws anchoring 2x buck require a minimum 1" clearance to masonry edges, a 1-1/4" minimum embedment and a minimum 4" clearance to adjacent concrete screws. Substitution of equal concrete screws from a different supplier may have different edge distance and center distance requirements. Concrete screw locations at the corners may be adjusted to maintain the minimum edge distance to mortar joints. If Concrete screw locations noted as "MAX. ON CENTER" must be adjusted to maintain the minimum edge distance to mortar joints, additional Concrete screws may be required to ensure the maximum on center dimension is not exceeded.
2. 1/4" ITW concrete screws anchoring frame and/or sill require a minimum 2-1/2" clearance to masonry edges, a 1-1/4" minimum embedment and a minimum 3" clearance to adjacent concrete screws. Substitution of equal concrete screws from a different supplier may have different edge distance and center distance requirements. Concrete screw locations at the corners may be adjusted to maintain the minimum edge distance to mortar joints. If Concrete screw locations noted as "MAX. ON CENTER" must be adjusted to maintain the minimum edge distance to mortar joints, additional Concrete screws may be required to ensure the maximum on center dimension is not exceeded.

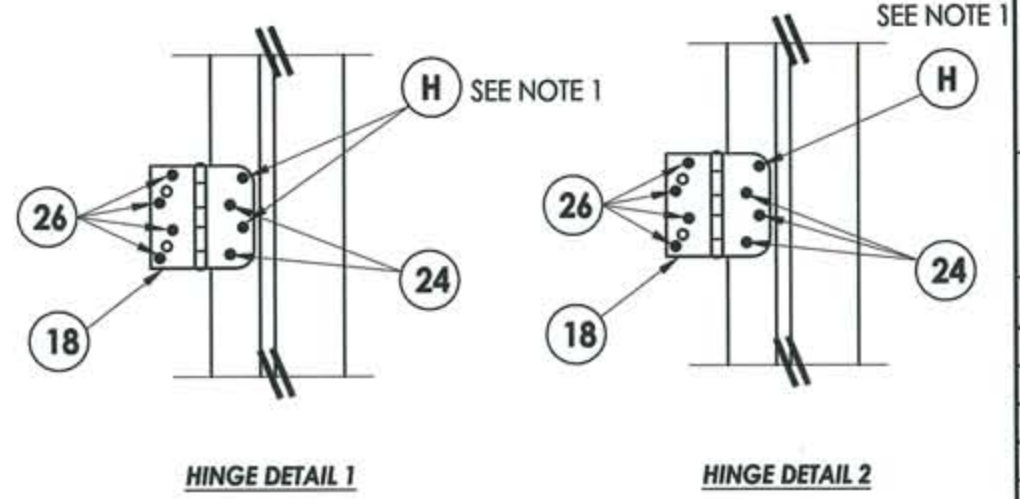
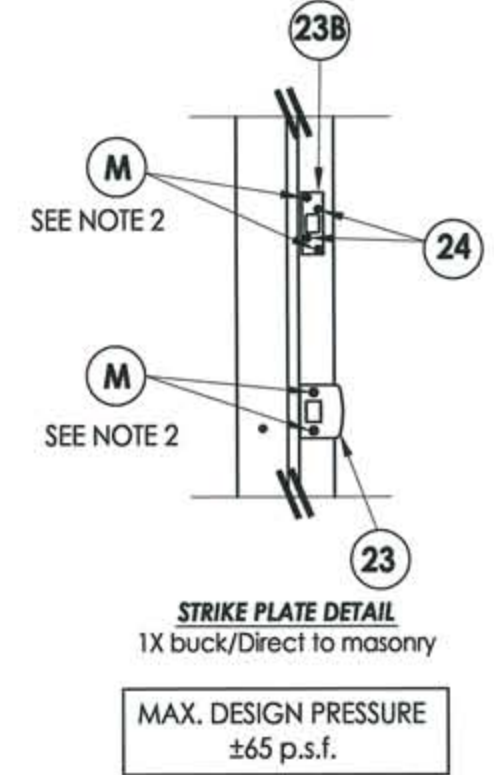
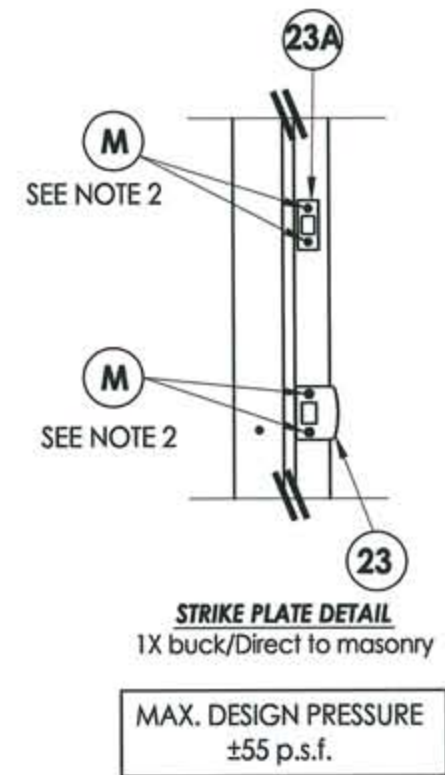
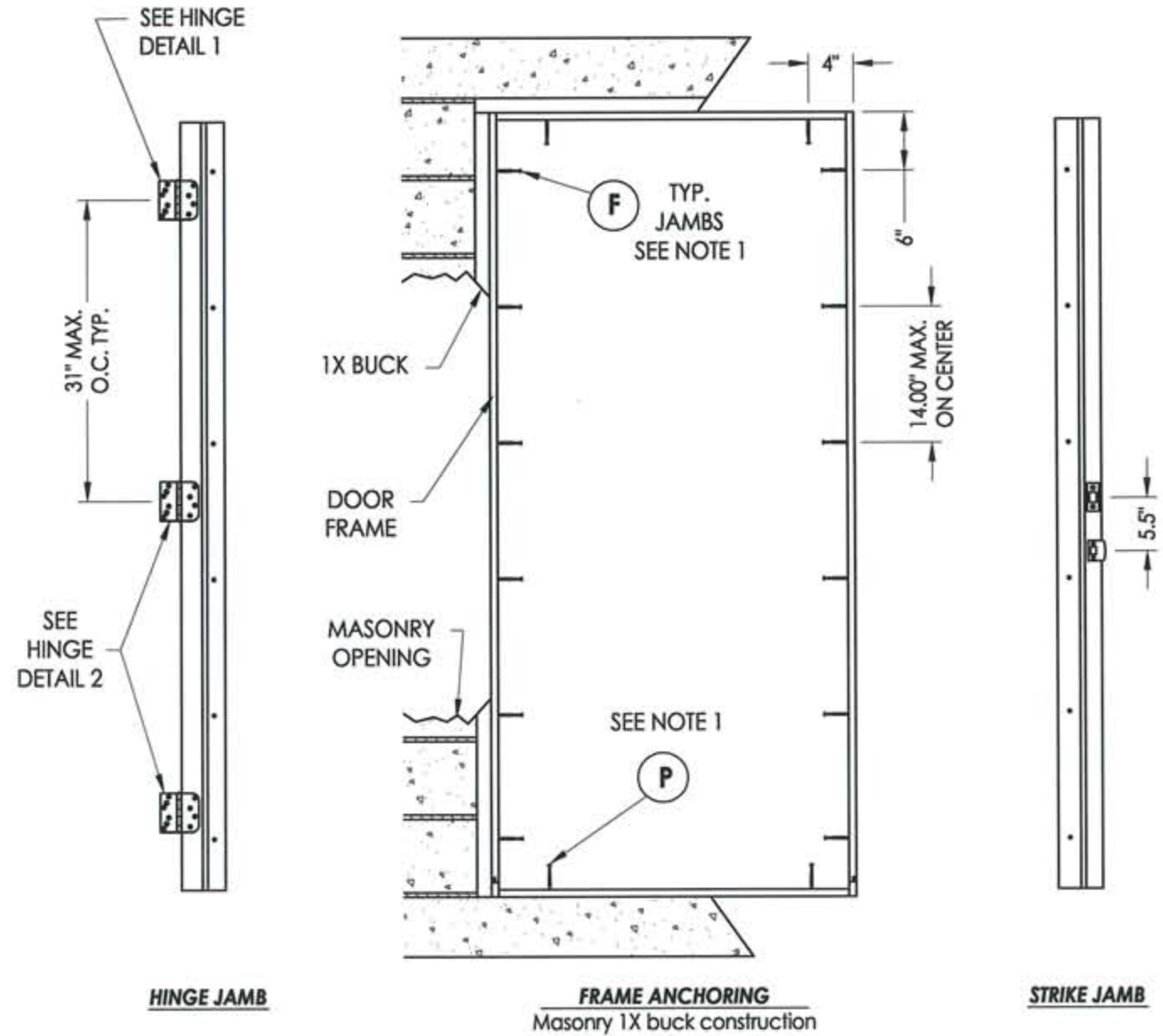
PRODUCT:	TRINITY GLASS INT'L 6"8 FLUSH GLAZED
PART OR ASSEMBLY:	BUCK AND FRAME ANCHORING 2X BUCK MASONRY CONSTRUCTION

NO.	DATE	BY	REVISIONS
1	09/29/08	JK	ADD OVAL LITED PANEL
2	12/23/08	DWS	DIRECT TO MASONRY ANCHORING

DATE:	9/30/08
SCALE:	N.T.S.
DWG. BY:	JK
CHK. BY:	LFS
DRAWING NO.:	FL-7960.1
SHEET	8 of 11

Documents Prepared By:
RW BUILDING CONSULTANTS, INC.
 P.O. Box 230 Vairico FL 33595
 Phone No.: 813.659.9197
 Florida Board of Professional Engineers
 Certificate of Authorization No. 9813
 1-8-09
 Lyndon F. Schmidt, P.E. No. 43409

R:\A - Projects\Project Folders\Proj 1001-1100\p1088\D. RWBC Drawings\FL-7960-R1\FL-7960.1-7 REV1.dwg, Model



NOTES:

- 1/4" ITW concrete screws anchoring frame and/or sill require a minimum 2-1/2" clearance to masonry edges, a 1-1/4" minimum embedment and a minimum 3" clearance to adjacent concrete screws. Substitution of equal concrete screws from a different supplier may have different edge distance and center distance requirements. Concrete screw locations at the corners may be adjusted to maintain the minimum edge distance to mortar joints. If Concrete screw locations noted as "MAX. ON CENTER" must be adjusted to maintain the minimum edge distance to mortar joints, additional Concrete screws may be required to ensure the maximum on center dimension is not exceeded.
- 3/16" ITW concrete screws anchoring frame and/or sill require a minimum 1-7/8" clearance to masonry edges, a 1-1/4" minimum embedment and a minimum 2-1/4" clearance to adjacent concrete screws unless otherwise noted by concrete screw manufacturer.

Documents Prepared By:
RW BUILDING CONSULTANTS, INC.
 P.O. Box 230 Valrico FL 33595
 Phone No.: 813.659.9197
 Florida Board of Professional Engineers
 Certificate Of Authorization No. 9813
 1-8-09
 Lyndon F. Schmidt, P.E. No. 43409

PRODUCT: TRINITY GLASS INT'L 6 8 FLUSH GLAZED
 PART OR ASSEMBLY: FRAME ANCHORING
 1X BUCK MASONRY CONSTRUCTION

NO.	DATE	BY	REVISIONS
2.	12/23/08	DWS	DIRECT TO MASONRY ANCHORING
1	09/29/08	JK	ADD OVAL LITED PANEL

DATE: 9/30/08
 SCALE: N.T.S.
 DWG. BY: JK
 CHK. BY: LFS
 DRAWING NO.: FL-7960.1
 SHEET 9 OF 11

