



4621 192nd STREET EAST TACOMA, WA 98446
 TEL: 253-875-7300 FAX: 253-875-7301

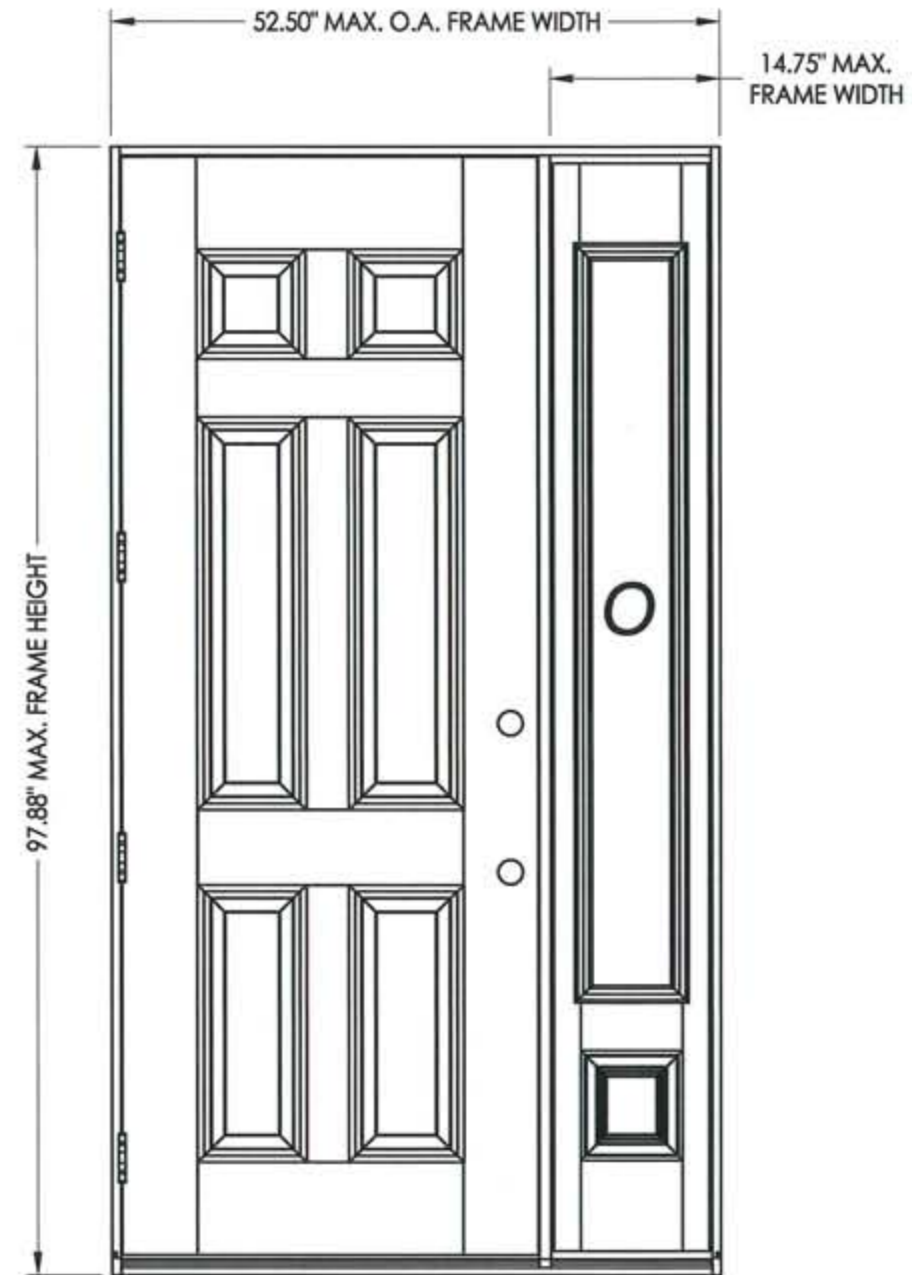
PREMIUM OPAQUE FIBERGLASS "IMPACT" DOOR WITH "NON-IMPACT" SIDELITE INSWING / OUTSWING

GENERAL NOTES

1. This product has been evaluated and is in compliance with the 2007 Florida Building Code (FBC) structural requirements excluding the "High Velocity Hurricane Zone" (HVHZ).
2. Product anchors shall be as listed and spaced as shown on details. Anchor embedment to base material shall be beyond wall dressing or stucco.
3. When used in areas requiring wind borne debris protection the opaque door complies with Section 1609.1.2 of the 2007 FBC and does not need to be protected with an impact resistant covering. The sidelite is req'd to be protected with an impact resistant covering that complies with Section 1609.1.2 of the 2007 FBC.
4. For 2x stud framing construction, anchoring of these units shall be the same as that shown for 2x buck masonry construction.
5. Site conditions that deviate from the details of this drawing require further engineering analysis by a licensed engineer or registered architect.

TABLE OF CONTENTS

| SHEET # | DESCRIPTION |
|---------|---|
| 1 | Typical elevations, design pressures & general notes |
| 2 | Door panel construction details |
| 3 | Sidelite panel construction details & glazing details |
| 4 | Horizontal cross sections |
| 5 | Vertical cross sections |
| 6 | Vertical cross sections |
| 7 | Buck anchoring |
| 8 | Frame anchoring - 2X buck masonry construction |
| 9 | Frame anchoring - 1X buck masonry construction |
| 10 | Components |
| 11 | Bill of materials |



CONTINUOUS HEADER AND SILL

| SWING | MAX. FRAME DIMENSION | GLASS TYPE | DESIGN PRESSURE (PSF) | |
|----------|----------------------|------------|-----------------------|----------|
| | | | POSITIVE | NEGATIVE |
| INSWING | 52.50" x 97.88" | G1 | +47.0 | -47.0 |
| OUTSWING | 52.50" x 96.75" | | +47.0 | -47.0 |

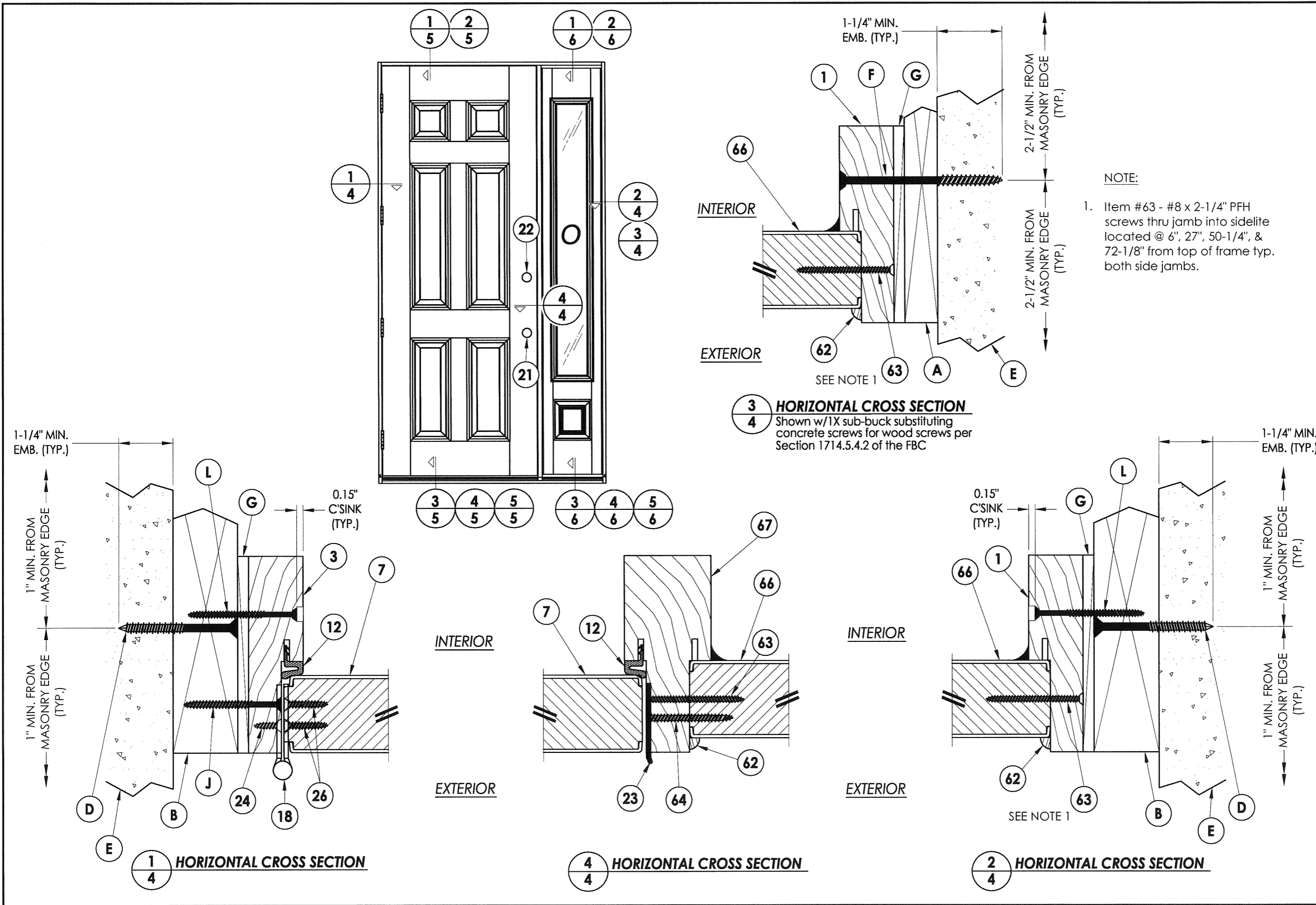
Documents Prepared By:

R.W. BUILDING CONSULTANTS, INC.
 P.O. Box 230 Valrico FL 33595
 Phone No.: 813.659.9197
 Florida Board of Professional Engineers
 Certificate Of Authorization No. 9813
Wendell W. Horley 7-18-08
 Wendell W. Horley, P.E. No. 54158

PRODUCT: TRINITY GLASS INT'L
 8'0" PREMIUM OPAQUE
 PART OR ASSEMBLY:
 TYPICAL ELEVATION, DESIGN PRESSURES & GENERAL NOTES

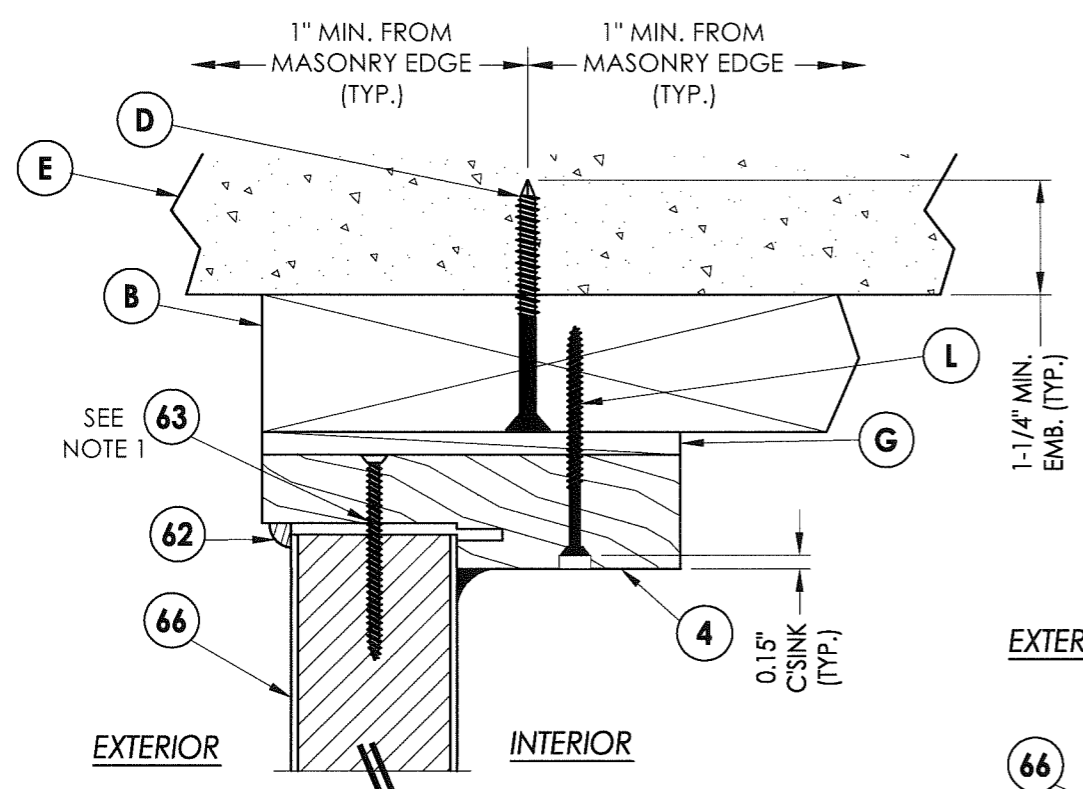
| NO. | DATE | BY | REVISIONS |
|-----|------|----|-----------|
| | | | |
| | | | |
| | | | |
| | | | |

DATE: 5/07/08
 SCALE: N.T.S.
 DWG. BY: YV
 CHK. BY: WWH
 DRAWING NO.: FL-5750.2
 SHEET 1 OF 11



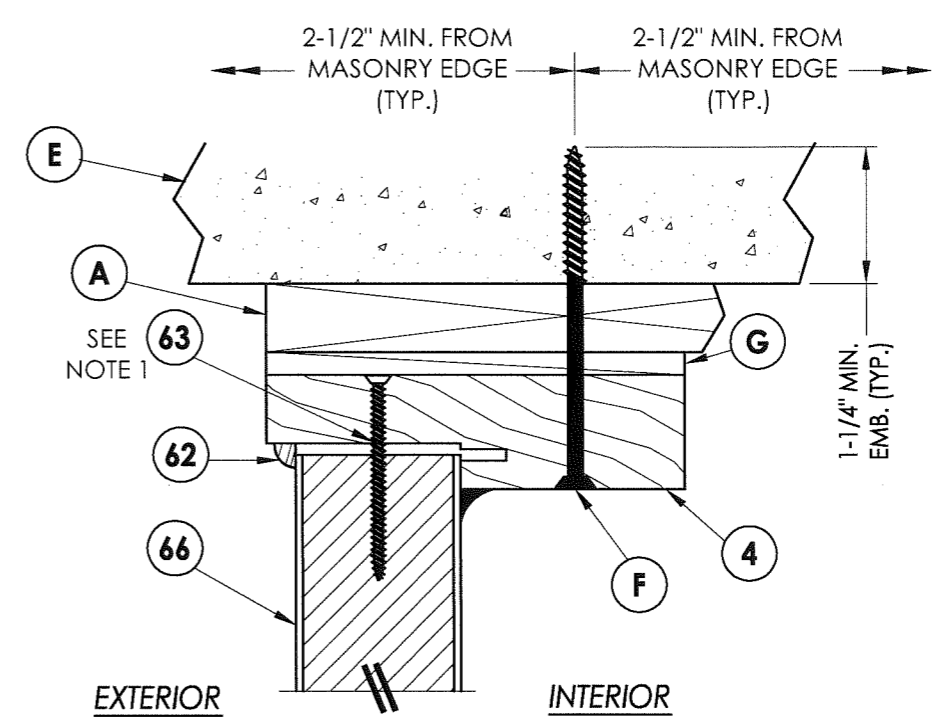
| | | | |
|------------------------|--|---|--|
| Documents Prepared By: | | BUILDING CONSULTANTS, INC. P.O. Box 230 Vairico FL 33595 Phone No.: 813.659.9197 Florida Board of Professional Engineers Certificate Of Authorization No. 9813 <i>Wendell W. Hapley</i> 7-18-08 Wendell W. Hapley, P.E. No. 54158 | |
| PRODUCT: | TRINITY GLASS INT'L 8'0" PREMIUM OPAQUE | PART OR ASSEMBLY: | |
| | | HORIZONTAL CROSS SECTIONS | |
| NO. | DATE | BY | |
| | | REVISIONS | |
| DATE: 5/07/08 | | SCALE: N.T.S. | |
| DWG. BY: YV | | CHK. BY: WWH | |
| DRAWING NO.: FL-5750.2 | | | |
| SHEET 4 OF 11 | | | |

R:\A - Projects\Project Folders\Proj 801 - 900\p826\FL-5750\1-5.DWG, Model

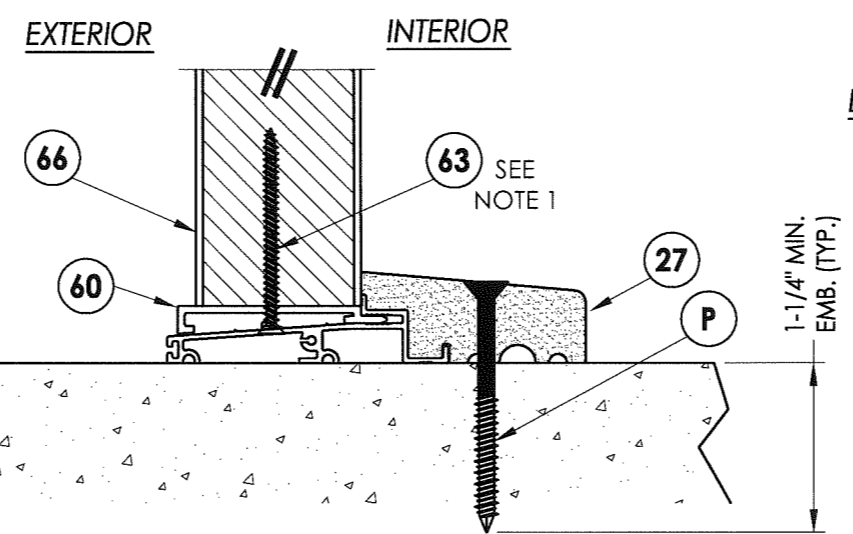


1
6 VERTICAL CROSS SECTION

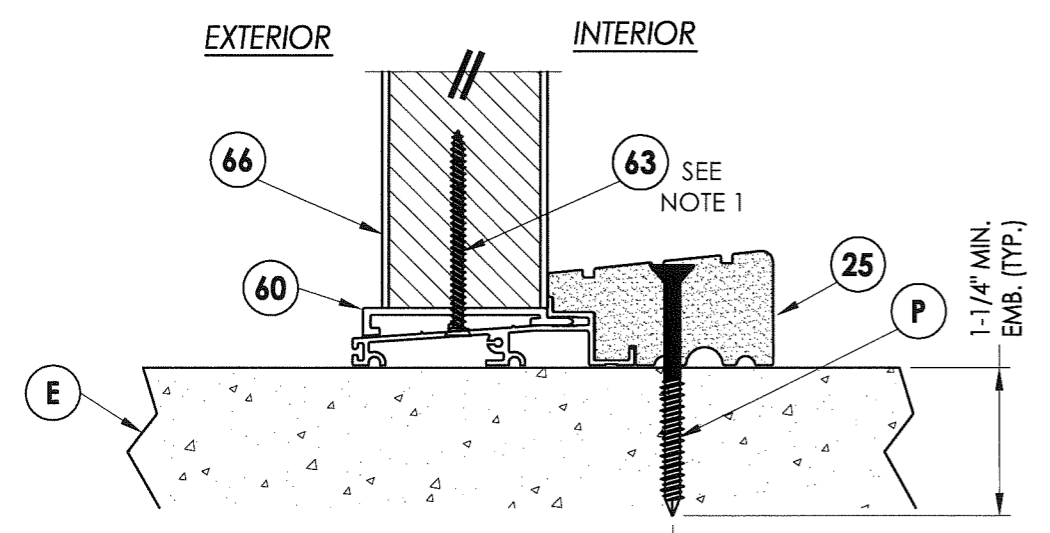
NOTE:
1. Screws thru head and sill jamb located 3" from each end and on center line.



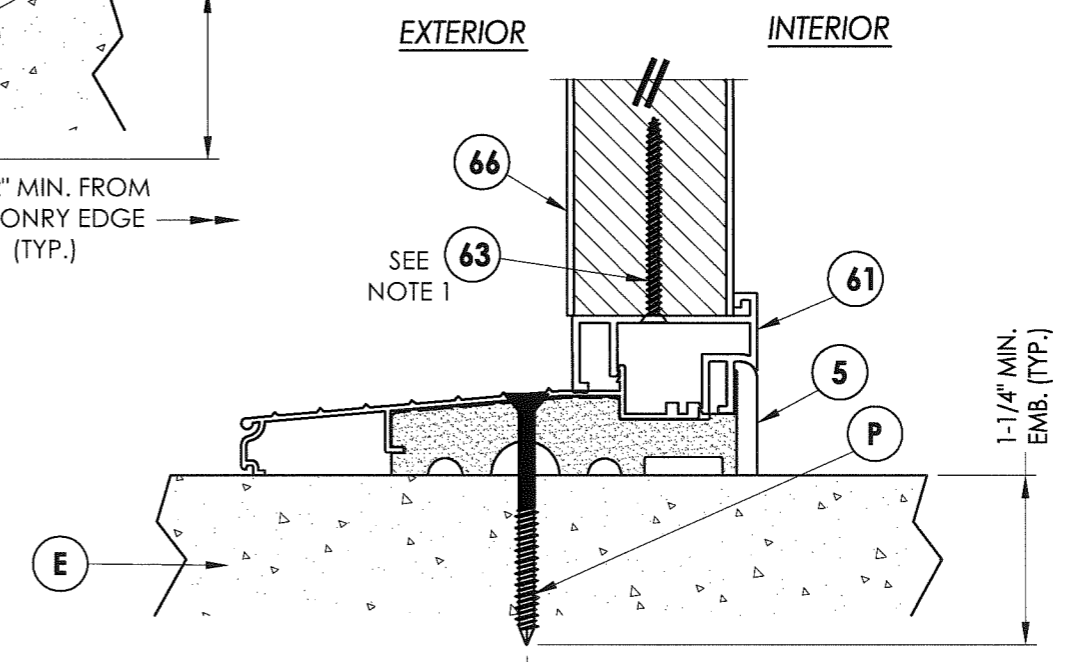
2
6 VERTICAL CROSS SECTION
Shown w/1X sub-buck substituting concrete screws for wood screws per Section 1714.5.4.2 of the FBC



4
6 VERTICAL CROSS SECTION
Outswing sill



3
6 VERTICAL CROSS SECTION
Outswing sill - high dam



5
6 VERTICAL CROSS SECTION
Inswing sill

Documents Prepared By:
RW BUILDING CONSULTANTS, INC.
P.O. Box 230 Valrico FL 33595
Phone No.: 813.659.9197
Florida Board of Professional Engineers
Certificate Of Authorization No. 9813
Wendell W. Herjesty P.E. No. 54158

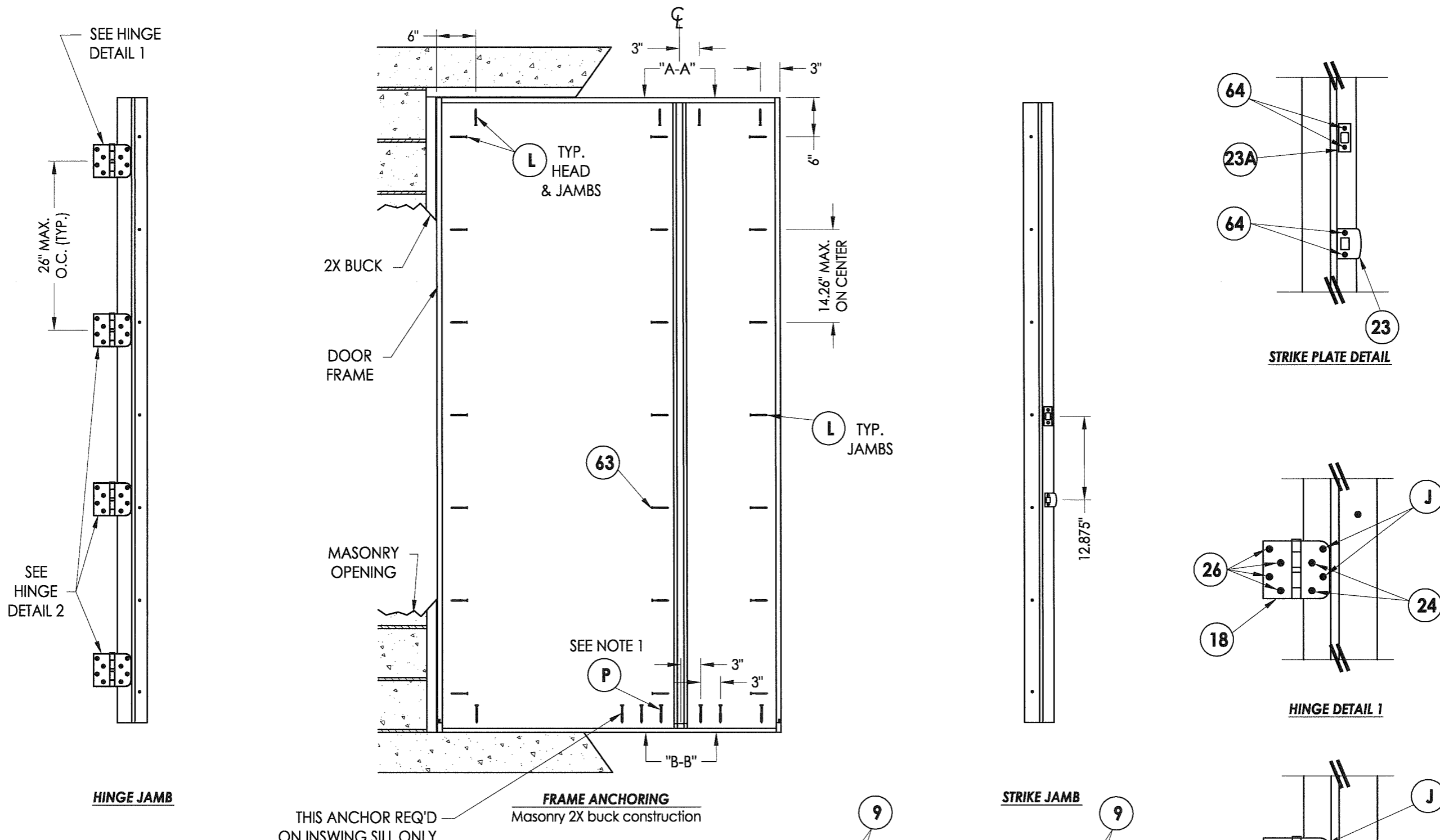
PRODUCT:
TRINITY GLASS INT'L
80 PREMIUM OPAQUE

PART OR ASSEMBLY:
VERTICAL CROSS SECTIONS

| NO. | DATE | BY | REVISIONS |
|-----|------|----|-----------|
| | | | |
| | | | |
| | | | |

DATE: 5/07/08
SCALE: N.T.S.
DWG. BY: YV
CHK. BY: WWH
DRAWING NO.: FL-5750.2
SHEET 6 OF 11

R:\A - Projects\Project Folders\Proj 801 - 900\p826\FL-5750\FL-5750.1-5.DWG, Model



NOTES:

1. 1/4" ITW concrete screws anchoring frame and/or sill require a minimum 2-1/2" clearance to masonry edges, a 1-1/4" minimum embedment and a minimum 3" clearance to adjacent concrete screws. Substitution of equal concrete screws from a different supplier may have different edge distance and center distance requirements. Concrete screw locations at the corners and at mullion centerlines may be adjusted to maintain the minimum edge distance to mortar joints. If Concrete screw locations noted as "MAX. ON CENTER" must be adjusted to maintain the minimum edge distance to mortar joints, additional Concrete screws may be required to ensure the maximum on center dimension is not exceeded.

Documents Prepared By:
RW BUILDING CONSULTANTS, INC.
 P.O. Box 230 Valrico FL 33595
 Phone No.: 813.659.9197
 Florida Board of Professional Engineers
 Certificate of Authorization No. 9813
 Wendell W. Harper, P.E. No. 5415B
 7-18-08

PRODUCT: TRINITY GLASS INT'L
 80 PREMIUM OPAQUE
 PART OR ASSEMBLY: FRAME ANCHORING
 2X BUCK MASONRY CONSTRUCTION

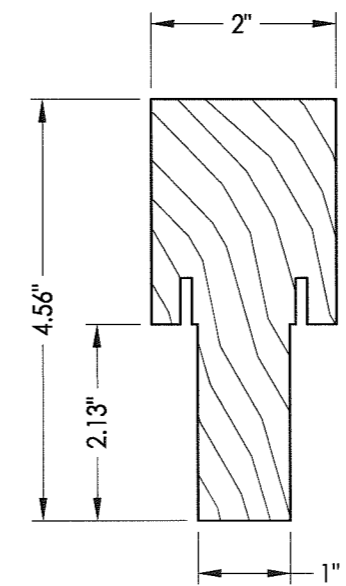
| NO. | DATE | BY | REVISIONS |
|-----|------|----|-----------|
| | | | |
| | | | |
| | | | |
| | | | |

DATE: 5/07/08
 SCALE: N.T.S.
 DWG. BY: YV
 CHK. BY: WWH
 DRAWING NO.: FL-5750.2
 SHEET 8 OF 11

© 2008 R.W. BUILDING CONSULTANTS INC.

R:\A - Projects\Project Folders\Proj 801 - 900\p826\FL-5750\1-5.DWG, Model

| BILL OF MATERIALS | | | BILL OF MATERIALS | | |
|-------------------|--|--------------|-------------------|---|--------------|
| ITEM | DESCRIPTION | MATERIAL | ITEM | DESCRIPTION | MATERIAL |
| A | 1X BUCK SG>=0.55 | WOOD | 39 | FIBERGLASS SKIN 0.079" MIN. THICKNESS (Fy = 5,203 PSI MIN.) | FIBERGLASS |
| B | 2X BUCK SG >= 0.55 | WOOD | 40 | #8 X 1-1/8" SELF THREADING SCREW | STEEL |
| D | 1/4" X 2-3/4" ELCO PFH CONCRETE SCREW | STEEL | 42 | ALUMINUM & BUTYL SPACER SYSTEM | ALUM./BUTYL |
| E | MASONRY - 3,192 PSI MIN. CONCRETE CONFORMING TO ACI 301 OR HOLLOW BLOCK CONFORMING TO ASTM C90 | CONCRETE | 44 | HOT MELT SEALANT | - |
| F | 1/4" X 3-3/4" ITW PFH CONCRETE SCREW | STEEL | 45 | LITE FRAME | ABS |
| G | MAX. 1/4" SHIM SPACE | WOOD | 46 | DOOR PANEL CORE FOAMED | POLYURETHANE |
| H | 1/4" X 3-1/4" ITW PFH CONCRETE SCREW | STEEL | 60 | SIDELITE SPACER - OUTSWING | PVC |
| J | #9 X 2-1/4" PFH WS | STEEL | 61 | SIDELITE SPACER - INSWING | PVC |
| L | #8 X 2-1/2" PFH WS | STEEL | 62 | QUARTER ROUND | WOOD |
| P | 1/4" X 2-3/4" ITW PFH CONCRETE SCREW | STEEL | 63 | #8 x 2-1/4" PFH SCREW | STEEL |
| 1 | SIDELITE JAMB - FINGER-JOINT PINE - SG >= 0.42 | WOOD | 64 | #8 x 2" PFH SCREW | STEEL |
| 3 | HINGE JAMB - FINGER-JOINT PINE - SG >= 0.42 | WOOD | 66 | SIDELITE PANEL - SEE SIDELITE PANEL DETAIL SHEET FOR CONSTRUCTION DETAILS | - |
| 4 | HEAD - FINGER-JOINT PINE - SG >= 0.42 | WOOD | 67 | INTEGRAL MULLION - FINGER JOINT PINE (SG >= 0.42) | WOOD |
| 5 | INSWING THRESHOLD ALUMINUM W/ COMPOSITE SUBSTRATE | ALUMINUM | 69 | MULLION BASE KIT | PC/ASA |
| 6 | DOOR BOTTOM SWEEP | PVC | 73 | LVL SIDELITE TOP RAIL (FULL LITE) | POPLAR |
| 7 | DOOR PANEL - SEE DOOR PANEL DETAIL SHEET FOR CONSTRUCTION DETAILS | - | 74 | LVL SIDELITE BOTTOM RAIL (FULL LITE) | POPLAR |
| 8 | #6 X 1-1/4 PFH DRYWALL SCREW | STEEL | 75 | LVL SIDELITE STILE (FULL LITE) | POPLAR |
| 9 | #9 X 2-1/4" PFH SMS | STEEL | | | |
| 12 | WEATHER STRIP QEBD650 Q-LON | - | | | |
| 18 | 3.983" X 4.0" HINGE MIN 0.098" THICK | STEEL | | | |
| 19 | SILLKEY | PC/ASA | | | |
| 21 | KWIKSET LOCK -SERIES 200 PASSAGE | STEEL | | | |
| 22 | KWIKSET DEADBOLT -SERIES 600 | STEEL | | | |
| 23 | STRIKE PLATE | STEEL | | | |
| 23A | DEADBOLT PLATE | STEEL | | | |
| 24 | #9 X 5/8" PFH WS | STEEL | | | |
| 25 | OUTSWING HIGH-DAM THRESHOLD ALUMINUM W/ COMPOSITE SUBSTRATE | ALUM./ COMP. | | | |
| 26 | #9 X 1.0" PFH WS | STEEL | | | |
| 27 | OUTSWING THRESHOLD ALUMINUM W/ COMPOSITE SUBSTRATE | ALUM./ COMP. | | | |
| 30 | LATCH STILE - SG >= 0.42 | LVL/PVC | | | |
| 31 | LVL LOCK BLOCK | POPLAR | | | |
| 32 | HINGE STILE - SG >= 0.42 | LVL/PVC | | | |
| 33 | TOP RAIL - POPLAR LVL & WPC COMBINATION | POPLAR/WPC | | | |
| 34 | BOTTOM RAIL - POPLAR LVL & WPC COMBINATION | POPLAR/WPC | | | |



67 INTEGRAL MULLION

Documents Prepared By: **RW** BUILDING CONSULTANTS, INC.
P.O. Box 230 Vairico FL 33595
Phone No.: 813.659.9197

Florida Board of Professional Engineers
Certificate of Authorization No. 9813
Wendell W. Haney, P.E. No. 54158

PRODUCT: TRINITY GLASS INT'L
80 PREMIUM OPAQUE

PART OR ASSEMBLY: BILL OF MATERIALS

| NO. | DATE | BY | REVISIONS |
|-----|------|----|-----------|
| | | | |
| | | | |
| | | | |
| | | | |

DATE: 5/07/08
SCALE: N.T.S.
DWG. BY: YV
CHK. BY: WWH
DRAWING NO.: FL-5750.2
SHEET 11 OF 11

© 2008 R.W. BUILDING CONSULTANTS INC.