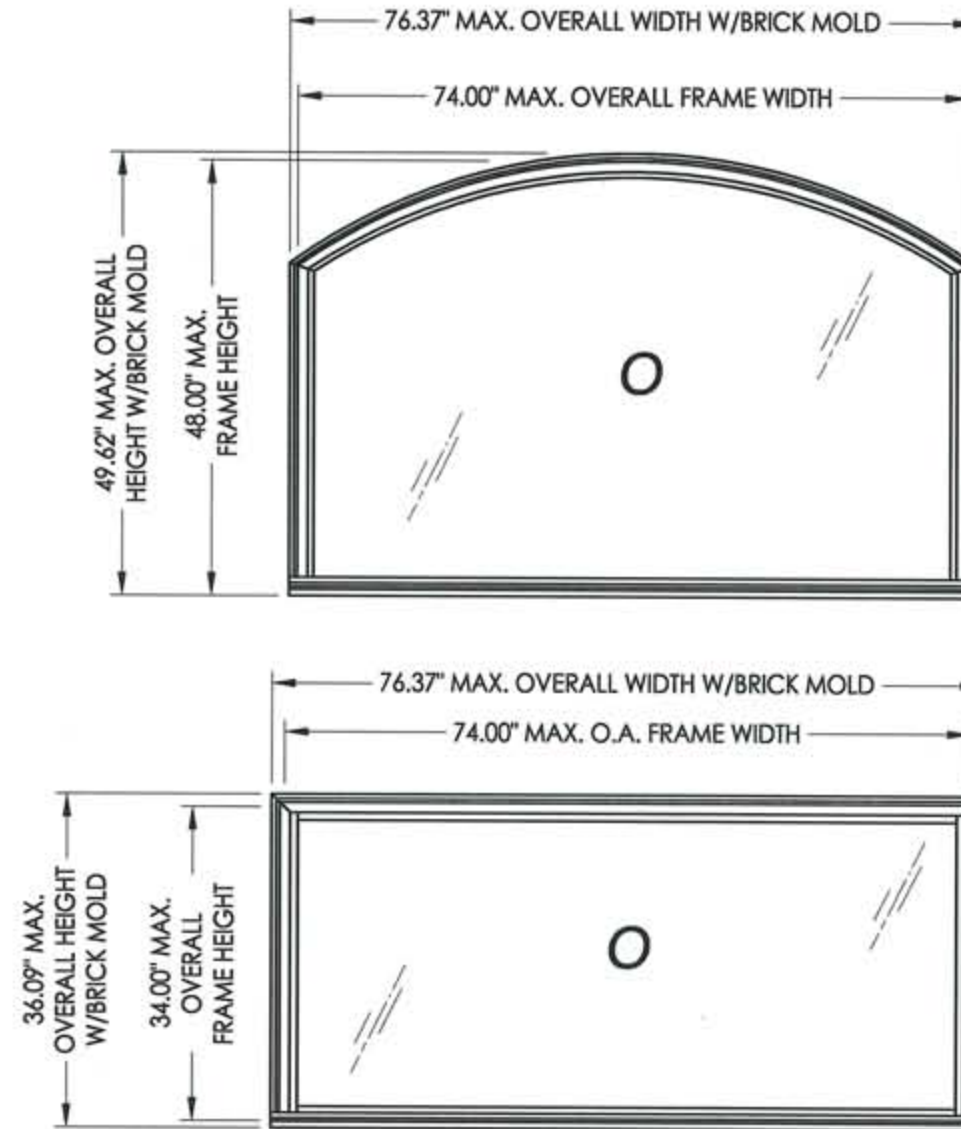


## TRANSOM / FIXED LITE "NON-IMPACT"

### GENERAL NOTES

1. This product has been evaluated and is in compliance with the 2007 Florida Building Code (FBC) structural requirements excluding the "High Velocity Hurricane Zone" (HVHZ).
2. Product anchors shall be as listed and spaced as shown on details. Anchor embedment to base material shall be beyond wall dressing or stucco.
3. When used in areas requiring wind borne debris protection this product is required to be protected with an impact resistant covering that complies with Section 1609.1.2 of the 2007 FBC.
4. For 2x stud framing construction, anchoring of these units shall be the same as that shown for 2x buck masonry construction.
5. Site conditions that deviate from the details of this drawing require further engineering analysis by a licensed engineer or registered architect.



| TABLE OF CONTENTS |   |
|-------------------|---|
| SHEET #           | DESCRIPTION   |
| 1                 | Typical elevation, design pressures & general notes |
| 2                 | Horizontal and vertical cross sections              |
| 3                 | Buck & frame anchoring (Radius)                     |
| 4                 | Buck & frame anchoring (Rectangular)                |
| 5                 | Bill of materials, glazing details & components     |

| UNIT TYPE   | OVERALL FRAME DIMENSION | OVERALL D.L.O. DIMENSION | GLASS TYPE | DESIGN PRESSURE (PSF) |          |
|-------------|-------------------------|--------------------------|------------|-----------------------|----------|
|             |                         |                          |            | POSITIVE              | NEGATIVE |
| RADIUS      | 74.00" x 48.00"         | 71.00" x 44.87"          | G1         | +65.0                 | -65.0    |
| RECTANGULAR | 74.00" x 34.00"         | 70.87" x 30.87"          | G2         | +65.0                 | -65.0    |

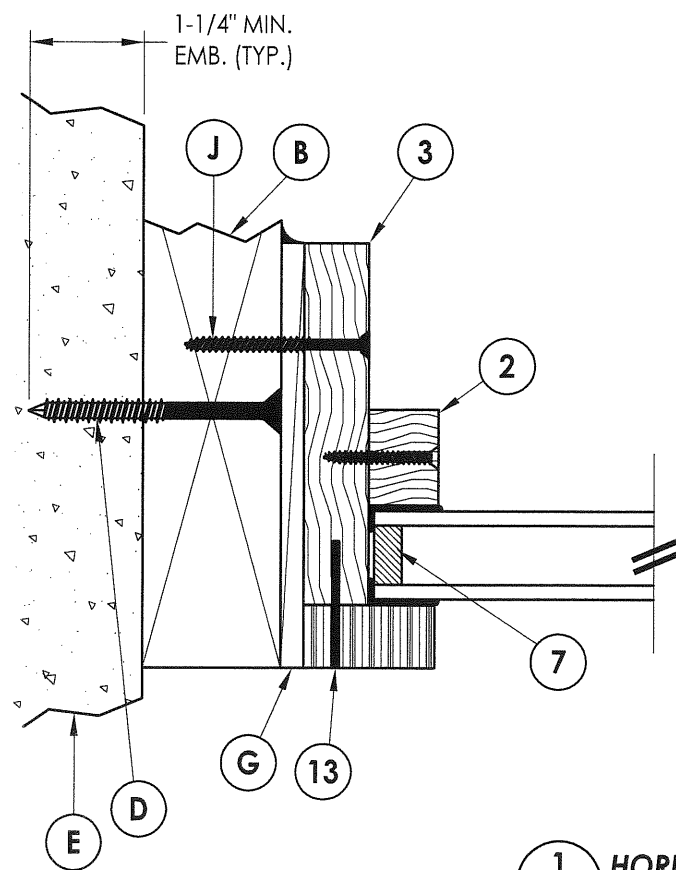
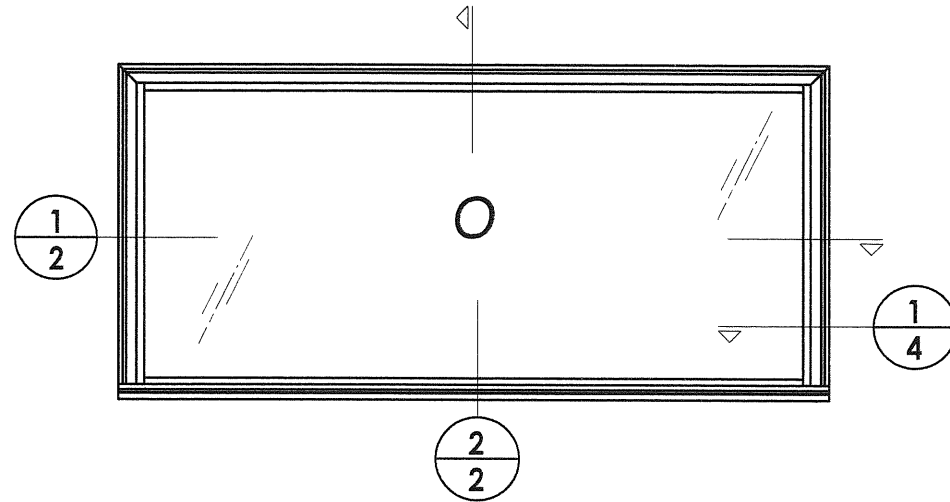
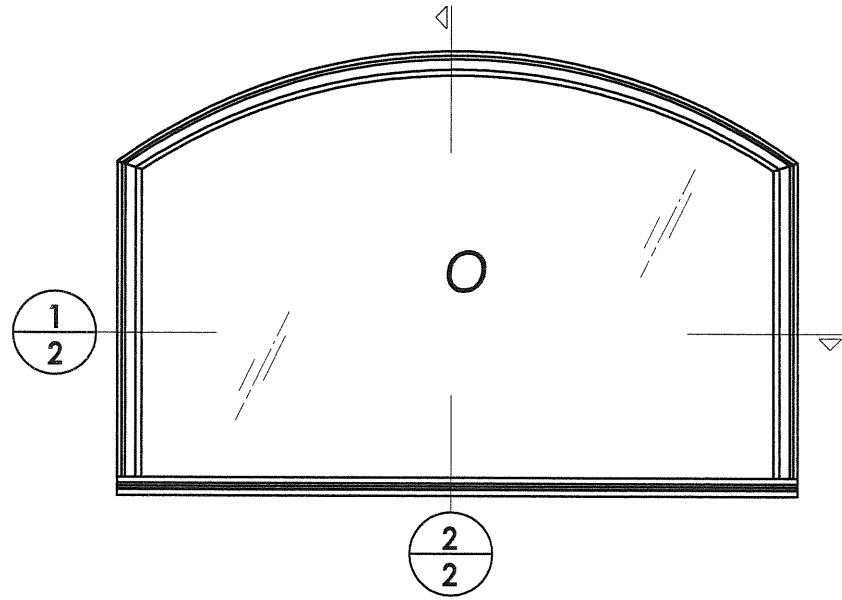
Documents Prepared By:

**RW** BUILDING CONSULTANTS, INC.  
P.O. Box 230 Valrico FL 33595  
Phone No.: 813.659.9197  
Florida Board of Professional Engineers  
Certificate of Authorization No. 9813  
*RW* 12.16.08  
Lyndon F. Schmidt, P.E. No. 43409

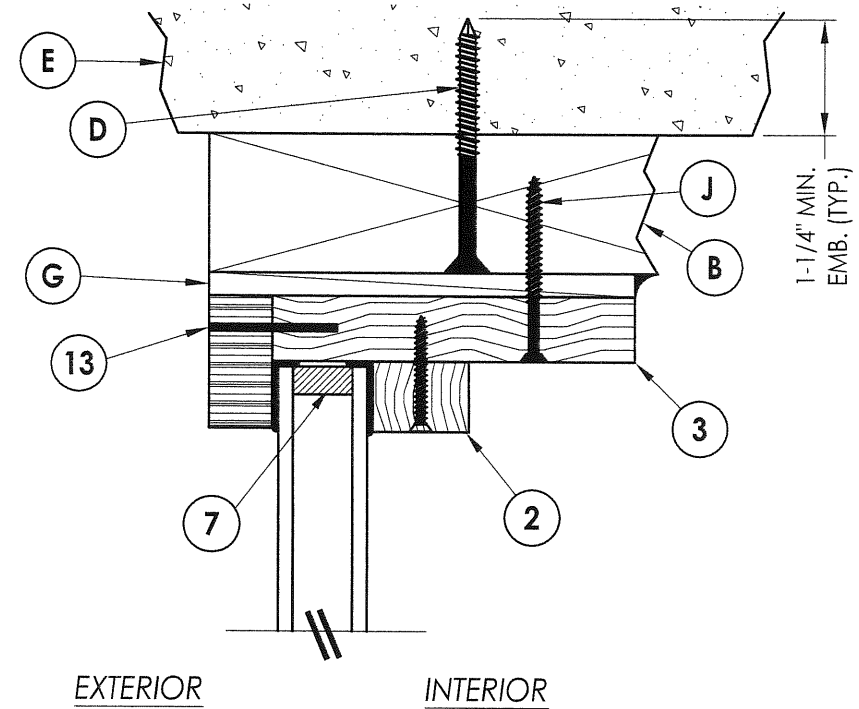
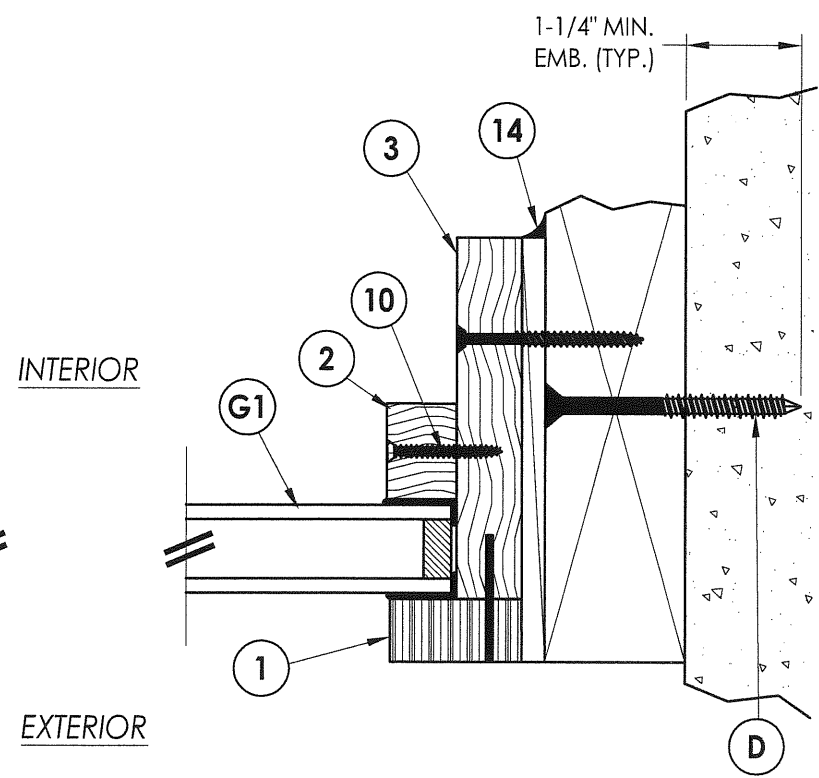
PRODUCT: TRINITY  
TRANSOM / FIXED LITE  
PART OR ASSEMBLY:  
TYPICAL ELEVATION, DESIGN PRESSURES & GENERAL NOTES

| NO. | DATE | BY | REVISIONS |
|-----|------|----|-----------|
|     |      |    |           |
|     |      |    |           |
|     |      |    |           |

DATE: 12/11/08  
SCALE: N.T.S.  
DWG. BY: AL  
CHK. BY: LFS  
DRAWING NO.: FL-5016.1  
SHEET 1 OF 5



**1**  
**2** HORIZONTAL CROSS SECTION



**2**  
**2** VERTICAL CROSS SECTION

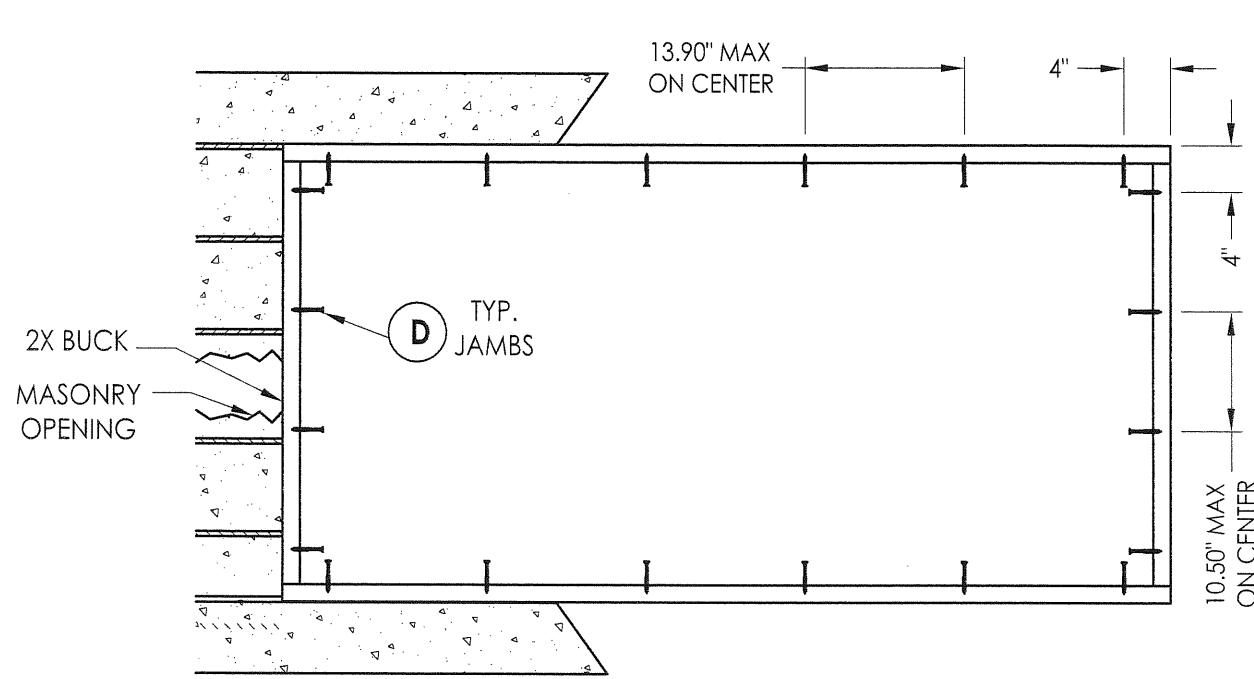
Documents Prepared By:  
**RW** BUILDING CONSULTANTS, INC.  
 P.O. Box 230 Valrico FL 33595  
 Phone No.: 813.659.9197  
 Florida Board of Professional Engineers  
 Certificate of Authorization No. 9813  
*LFS* 12.6.08  
 Lyndon F. Schmidt, P.E. No. 43409

PRODUCT: TRINITY / FIXED LITE  
 PART OR ASSEMBLY: HORIZONTAL AND VERTICAL CROSS SECTIONS

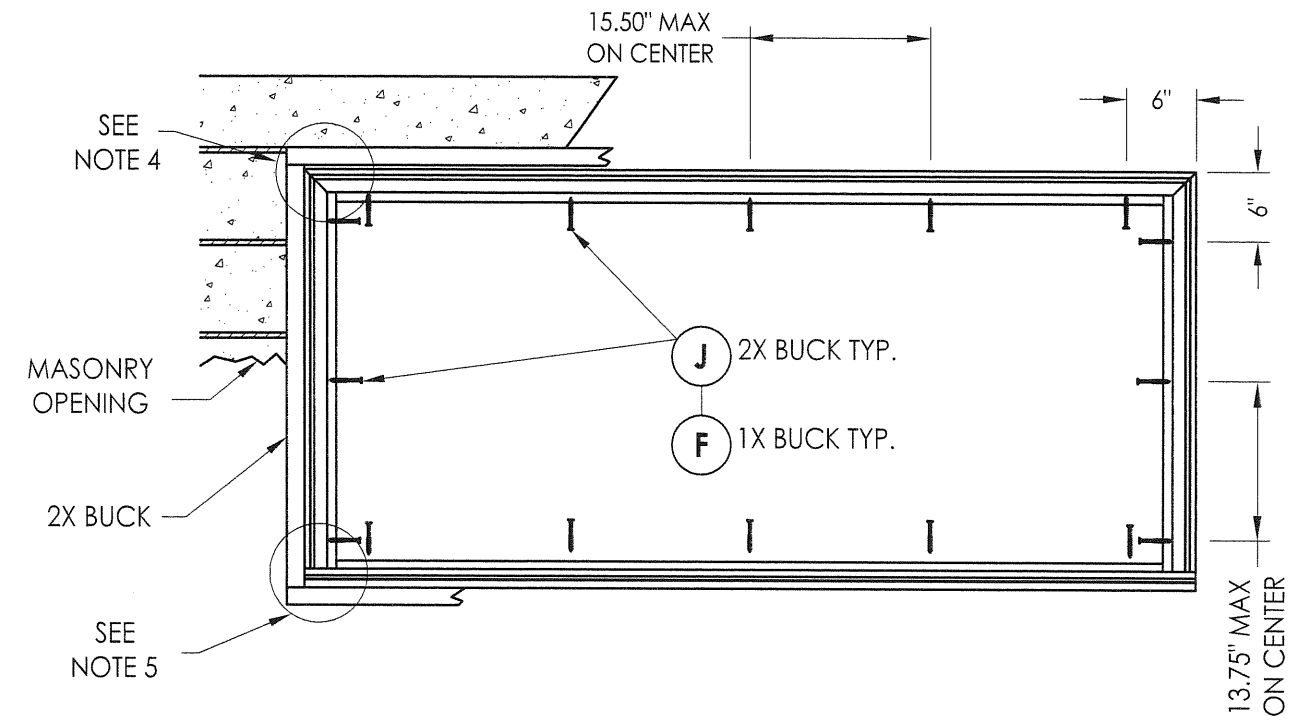
| NO. | DATE | BY | REVISIONS |
|-----|------|----|-----------|
|     |      |    |           |
|     |      |    |           |
|     |      |    |           |
|     |      |    |           |

DATE: 12/11/08  
 SCALE: N.T.S.  
 DWG. BY: AL  
 CHK. BY: LFS  
 DRAWING NO.: FL-5016.1  
 SHEET 2 OF 5

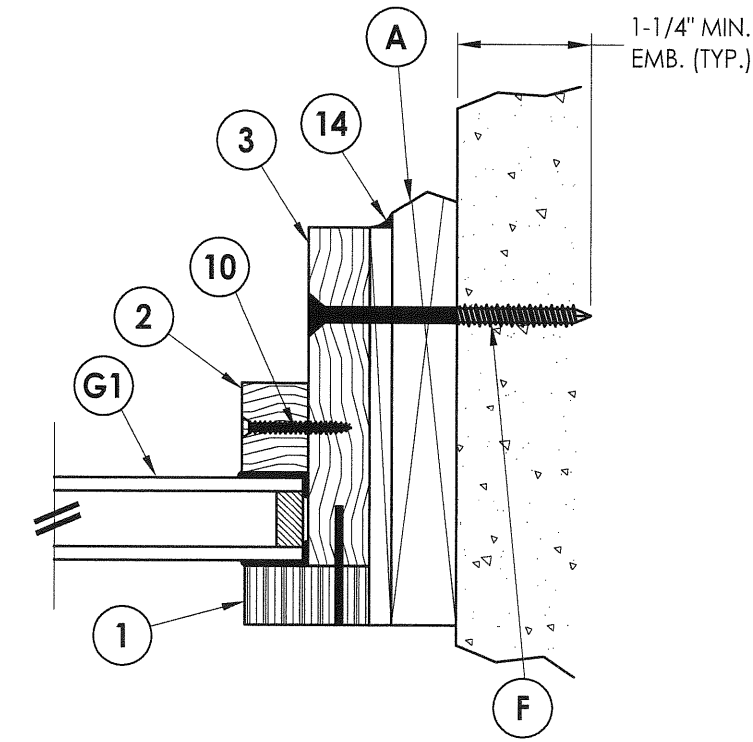




**BUCK ANCHORING**



**FRAME ANCHORING**  
Masonry 2X buck construction



**1** **HORIZONTAL CROSS SECTION**  
**4** Shown w/1X sub-buck substituting concrete screws for wood screws per Section 1714.5.4.2 of the FBC Typical at head, sill and jamb

**CONCRETE ANCHOR NOTES:**

1. Substitution of equal concrete screws from a different supplier may have different edge distance and center distance requirements.
2. Concrete screw locations at the corners may be adjusted to maintain the minimum edge distance to mortar joints. If concrete screw locations noted as "MAX. ON CENTER" must be adjusted to maintain the minimum edge distance to mortar joints, additional concrete screws may be required to ensure the maximum on center dimension is not exceeded.
3. Concrete anchor table:

| ANCHOR TYPE | ANCHOR SIZE | MINIMUM EMBEDMENT | MINIMUM CLEARANCE TO MASONRY EDGE | MINIMUM CLEARANCE TO ADJACENT ANCHOR |
|-------------|-------------|-------------------|-----------------------------------|--------------------------------------|
| ITW         | 1/4"        | 1-1/4"            | 2-1/2"                            | 3"                                   |
| ELCO        | 1/4"        | 1-1/4"            | 1"                                | 4"                                   |

4. Head jamb attached to side jamb w/ (3) #8 x 2-1/2" drywall screws from the head into side jamb.
5. Sill jamb attached to side jamb w/ (3) #8 x 2-1/2" drywall screws from the sill into side jamb.

Documents Prepared By:  
**RW** BUILDING CONSULTANTS, INC.  
 P.O. Box 230 Vairico FL 33595  
 Phone No.: 813.659.9197  
 Florida Board of Professional Engineers  
 Certificate of Authorization No. 9813  
*LFS* 12.16.08  
 Lyndon F. Schmidt, P.E. No. 43409

PRODUCT: TRINITY TRANSOM / FIXED LITE  
 PART OR ASSEMBLY: BUCK & FRAME ANCHORING (RECTANGULAR)

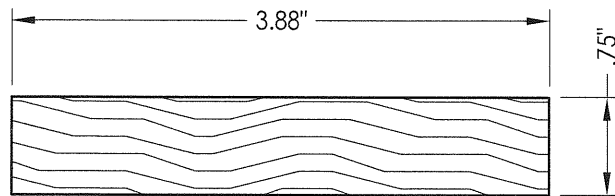
| NO. | DATE | BY | REVISIONS |
|-----|------|----|-----------|
|     |      |    |           |
|     |      |    |           |
|     |      |    |           |

DATE: 12/11/08  
 SCALE: N.T.S.  
 DWG. BY: AL  
 CHK. BY: LFS  
 DRAWING NO.: FL-5016.1  
 SHEET 4 OF 5

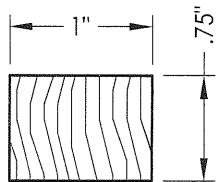
© 2008 R.W. BUILDING CONSULTANTS INC.

R:\A - Projects\Project Folders\proj 650 - 800\p7888\FL-5016\FL-5016.1.dwg, Model

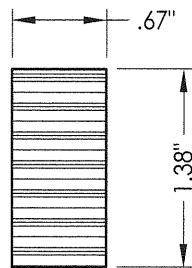
| BILL OF MATERIALS |  |          |
|-------------------|--|----------|
| ITEM              | DESCRIPTION  | MATERIAL |
| A                 | 1X BUCK  | WOOD     |
| B                 | 2X BUCK SG >= 0.55   | WOOD     |
| D                 | 1/4" X 2-3/4" ELCO OR ITW CONCRETE SCREW   | STEEL    |
| E                 | MASONRY - 3,192 PSI MIN. CONCRETE CONFORMING TO ACI 301 OR HOLLOW BLOCK CONFORMING TO ASTM C90 | CONCRETE |
| F                 | 1/4" X 3-1/4" ELCO OR ITW CONCRETE SCREW   | STEEL    |
| G                 | MAX. 1/4" SHIM SPACE   | -        |
| J                 | #8 X 2" PFH WOOD SCREW   | STEEL    |
| 1                 | EXTERIOR GLASS STOP  | PVC      |
| 2                 | INTERIOR GLASS STOP (POPLAR: SG = .39 OR BETTER)   | WOOD     |
| 3                 | FRAME (POPLAR: SG = .39 OR BETTER)   | WOOD     |
| 6                 | #8 X 3" PFH WOOD SCREW   | STEEL    |
| 7                 | GLAZING SPACER .250" THICK SWIGGLE (TRUSEAL)   | -        |
| 10                | #8 X 1-1/4" PFH WOOD SCREW   | STEEL    |
| 12                | GLAZING COMPOUND   | SILICONE |
| 13                | 1/8" X 1-3/8" 18ga STAPLE  | STEEL    |
| 14                | LATEX CAULK  | -        |



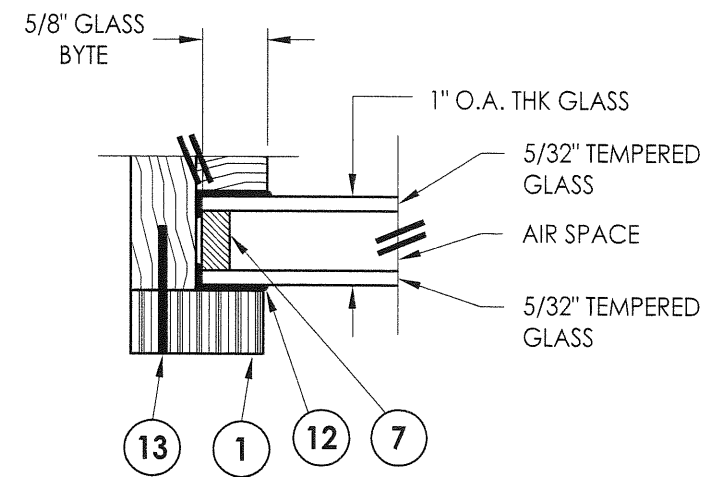
3 FRAME



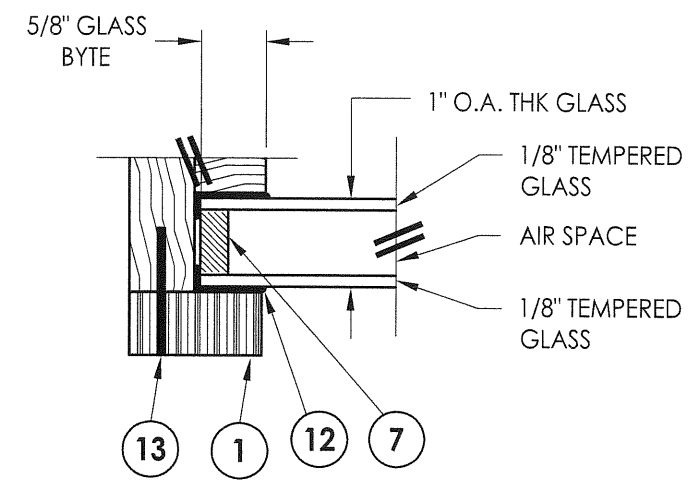
2 INTERIOR GLASS STOP



1 EXTERIOR GLASS STOP



G1 GLAZING DETAIL



G2 GLAZING DETAIL

Documents Prepared By: **RW** BUILDING CONSULTANTS, INC.  
P.O. Box 230 Valrico FL 33595  
Phone No.: 813.659.9197  
Florida Board of Professional Engineers  
Certificate of Authorization No. 9813  
**RW** 12.16.08  
Lyndon F. Schmidt, P.E. No. 43409

PRODUCT: TRINITY / FIXED LITE  
TRANSOM /

PART OR ASSEMBLY: BILL OF MATERIALS, GLAZING DETAIL & COMPONENTS

| NO. | DATE | BY | REVISIONS |
|-----|------|----|-----------|
|     |      |    |           |
|     |      |    |           |
|     |      |    |           |

DATE: 12/11/08  
SCALE: N.T.S.  
DWG. BY: JK  
CHK. BY: LFS  
DRAWING NO.: FL-5016.1  
SHEET 5 OF 5

© 2008 R.W. BUILDING CONSULTANTS INC.