



4621 192nd STREET EAST TACOMA, WA 98446
 TEL: 253-875-7300 FAX: 253-875-7301

PREMIUM OPAQUE FIBERGLASS INSWING / OUTSWING "IMPACT" DOOR WITH "NON-IMPACT" SIDELITES

GENERAL NOTES

1. This product has been evaluated and is in compliance with the 2007 Florida Building Code (FBC) structural requirements excluding the "High Velocity Hurricane Zone" (HVHZ).
2. Product anchors shall be as listed and spaced as shown on details. Anchor embedment to base material shall be beyond wall dressing or stucco.
3. When used in areas requiring wind borne debris protection the opaque door complies with Section 1609.1.2 of the 2007 FBC and does not need to be protected with an impact resistant covering. The sidelite is req'd to be protected with an impact resistant covering that complies with Section 1609.1.2 of the 2007 FBC.
4. For 2x stud framing construction, anchoring of these units shall be the same as that shown for 2x buck masonry construction.
5. Site conditions that deviate from the details of this drawing require further engineering analysis by a licensed engineer or registered architect.

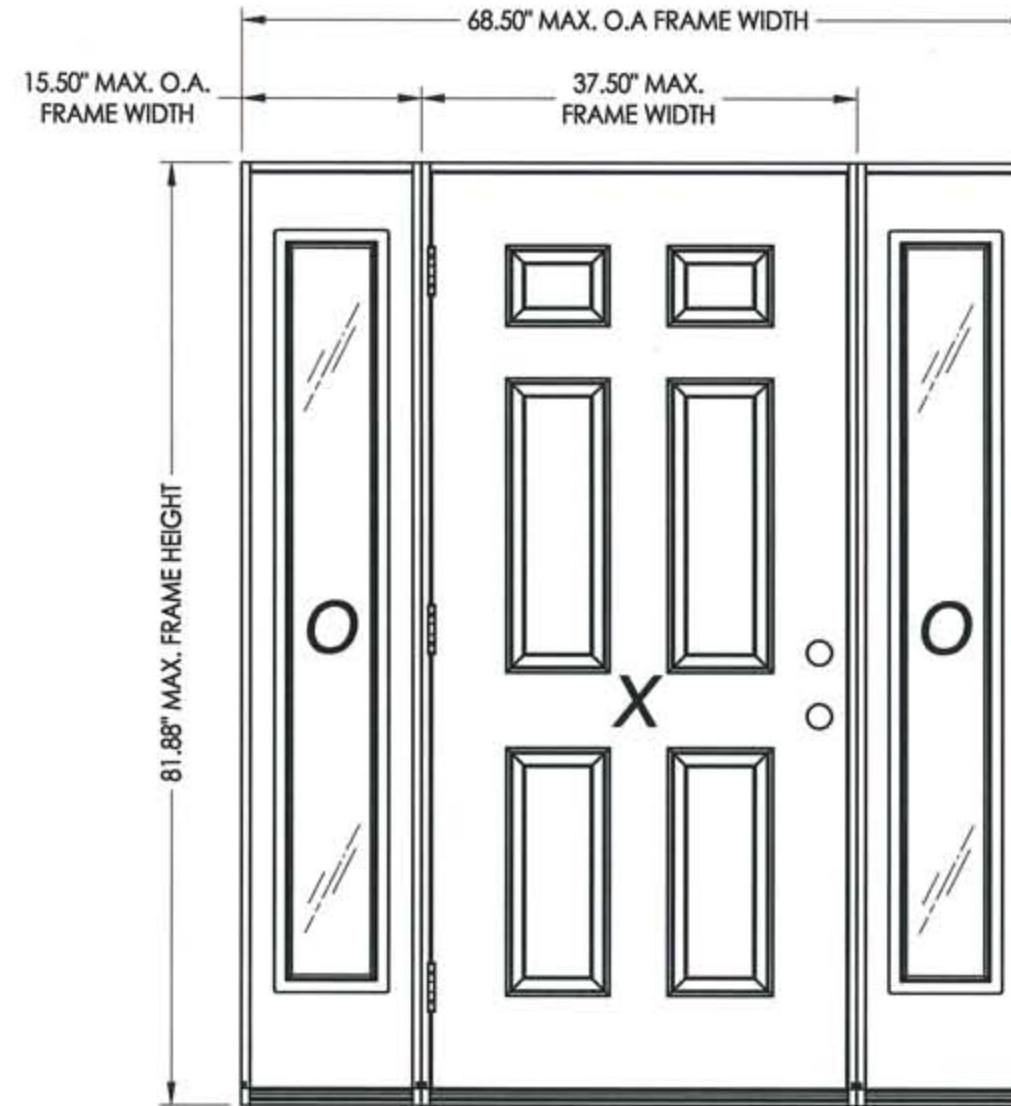


TABLE OF CONTENTS	
SHEET #	DESCRIPTION
1	Typical elevations, design pressures & general notes
2	Door panel construction details
3	Sidelite panel construction details & glazing details
4	Horizontal cross sections
5	Vertical cross sections
6	Vertical cross sections
7	Buck anchoring
8	Frame anchoring - 2X buck masonry construction
9	Frame anchoring - 1X buck masonry construction
10	Components
11	Bill of materials

SWING	MAX. FRAME DIMENSION	GLASS TYPE	DESIGN PRESSURE (PSF)	
			POSITIVE	NEGATIVE
INSWING	68.50" x 81.88"	G1	+55.0	-55.0
OUTSWING	68.50" x 80.75"		+55.0	-55.0

Documents Prepared By:

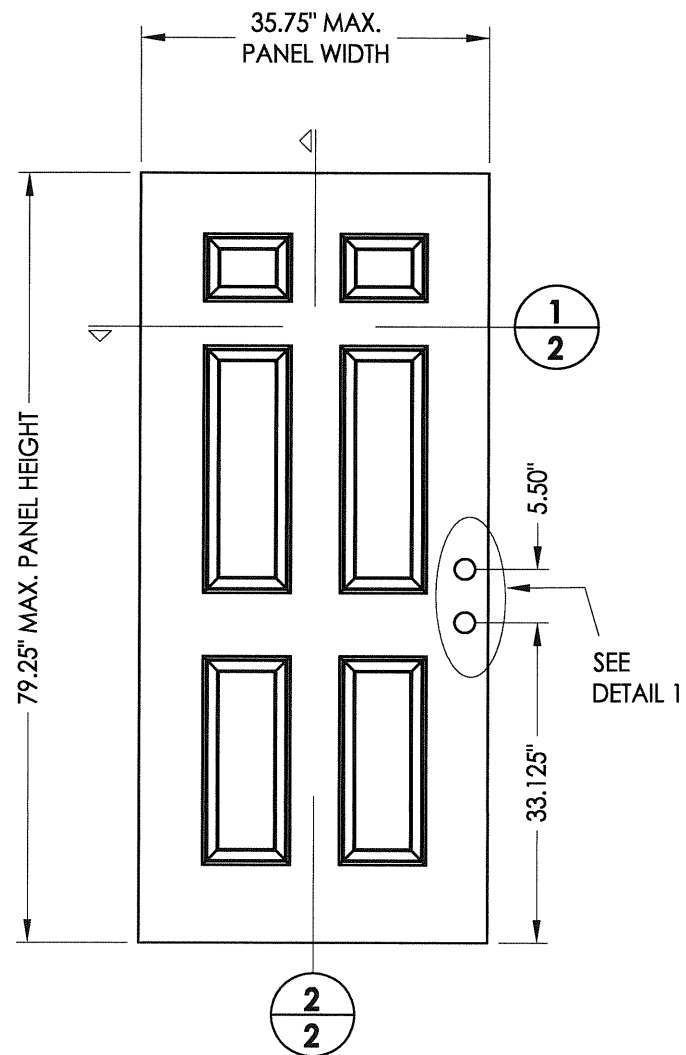
RW BUILDING CONSULTANTS, INC.
 P.O. Box 230 Valrico FL 33595
 Phone No.: 813.659.9197
 Florida Board of Professional Engineers
 Certificate Of Authorization No. 9813
 7-11-08
 Wendell W. Haney, P.E. No. 54158

PRODUCT: TRINITY GLASS INT'L
 6'8" PREMIUM OPAQUE

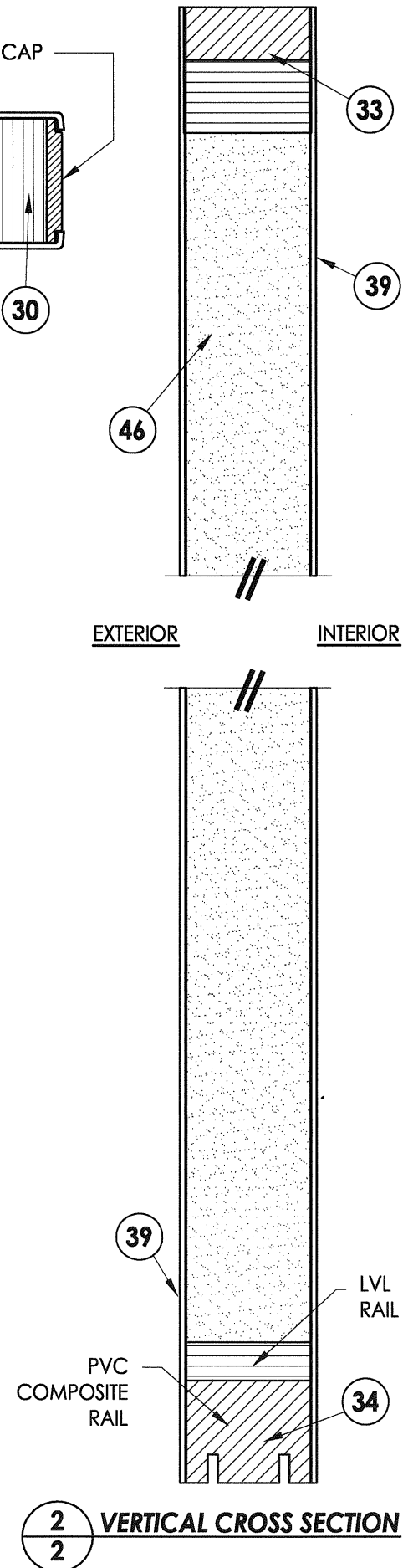
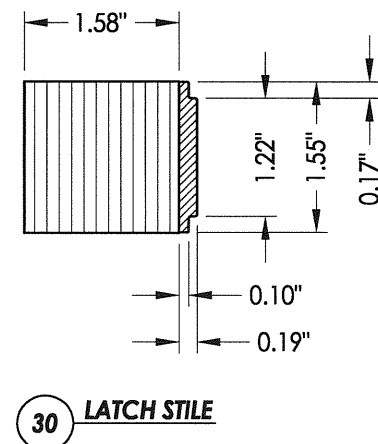
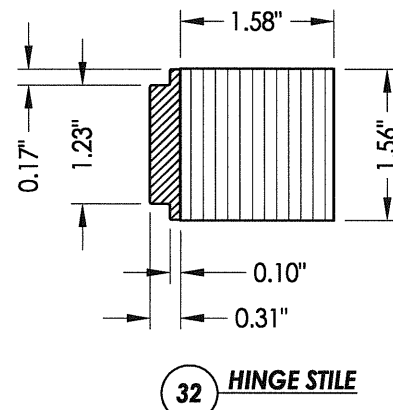
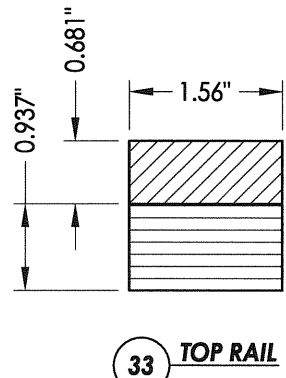
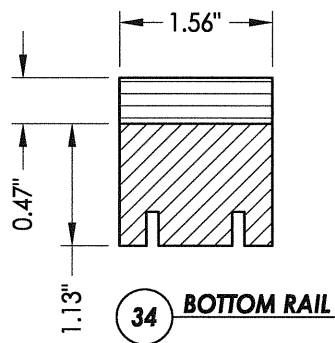
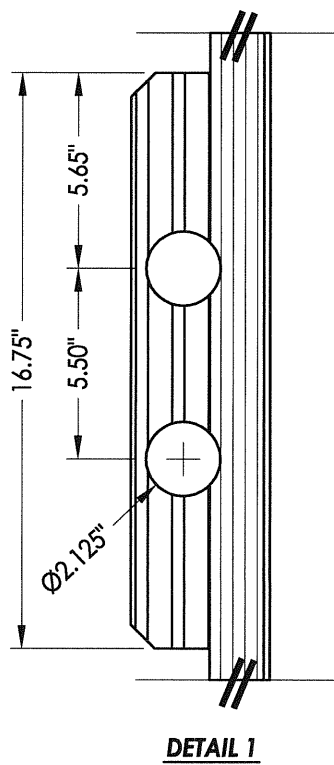
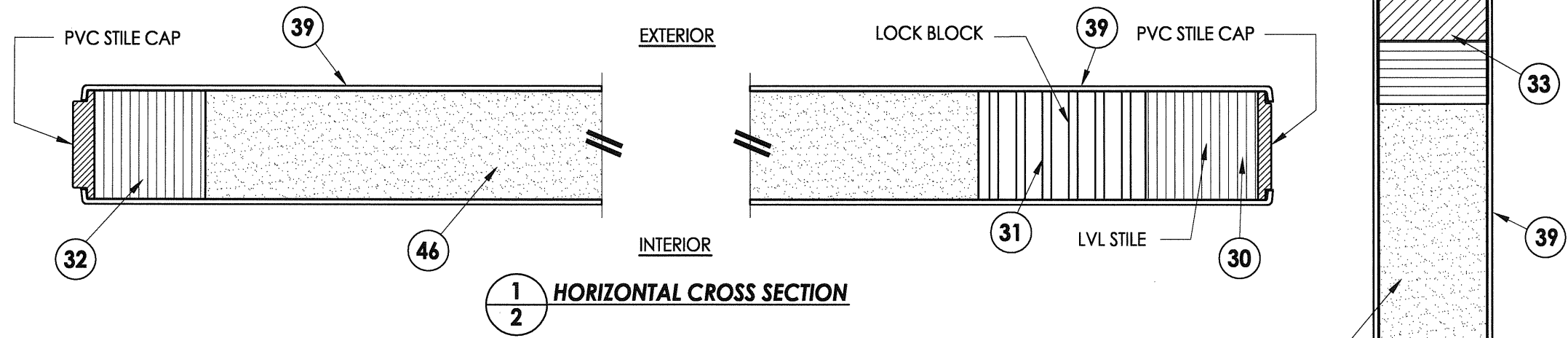
PART OR ASSEMBLY:
 TYPICAL ELEVATION, DESIGN
 PRESSURES & GENERAL NOTES

NO.	DATE	BY	REVISIONS

DATE: 4/29/08
 SCALE: N.T.S.
 DWG. BY: YV
 CHK. BY: WWH
 DRAWING NO.: FL-4366.3
 SHEET 1 OF 11



7 PREMIUM OPAQUE DOOR "IMPACT"

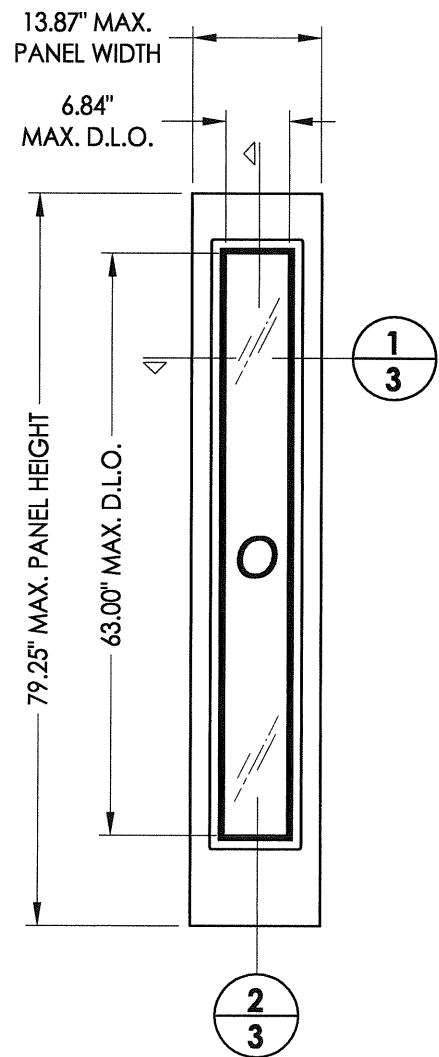


Documents Prepared By: **RW** BUILDING CONSULTANTS, INC.
P.O. Box 230 Valrico FL 33595
Phone No.: 813.659.9197
Florida Board of Professional Engineers
Certificate Of Authorization No. 9813
Wendell W. Heney 7-11-08
Wendell W. Heney, P.E. No. 54158

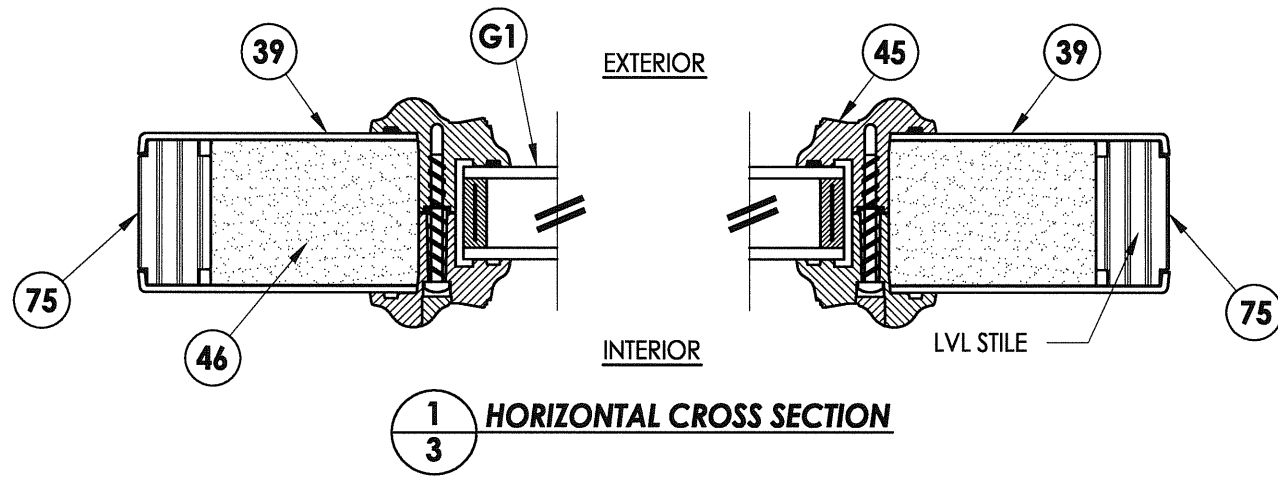
PRODUCT:	TRINITY GLASS INT'L 6 8 PREMIUM OPAQUE
PART OR ASSEMBLY:	DOOR PANEL CONSTRUCTION DETAILS

NO.	DATE	BY	REVISIONS

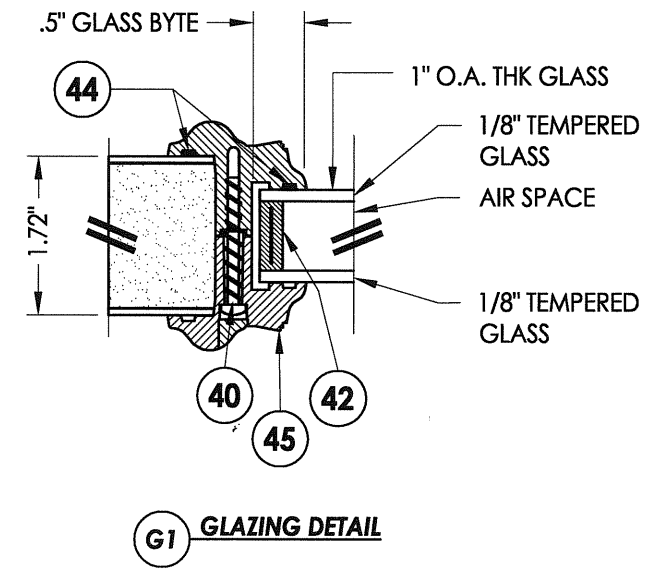
DATE:	4/29/08
SCALE:	N.T.S.
DWG. BY:	YV
CHK. BY:	WWH
DRAWING NO.:	FL-4366.3



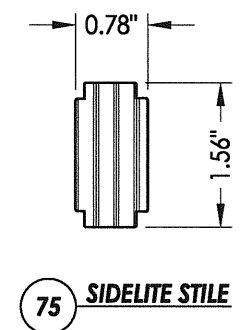
66 FIBERGLASS SIDELITE
"NON-IMPACT"



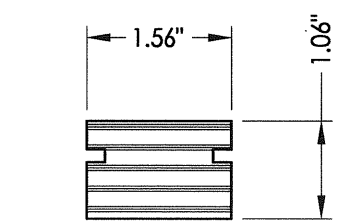
1
3 HORIZONTAL CROSS SECTION



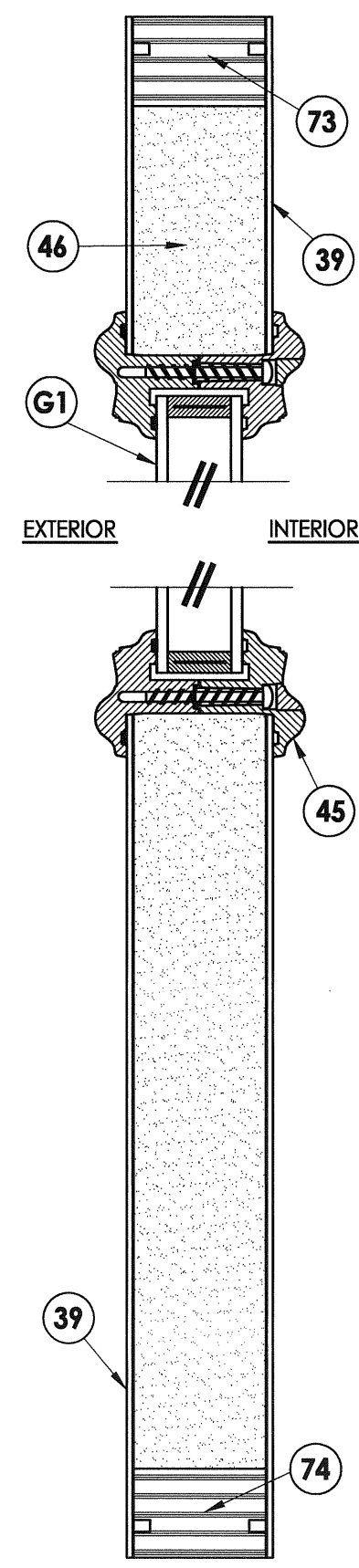
G1 GLAZING DETAIL



75 SIDELITE STILE



74 73 TOP & BOTTOM RAIL
SIDELITE



2
3 VERTICAL CROSS SECTION

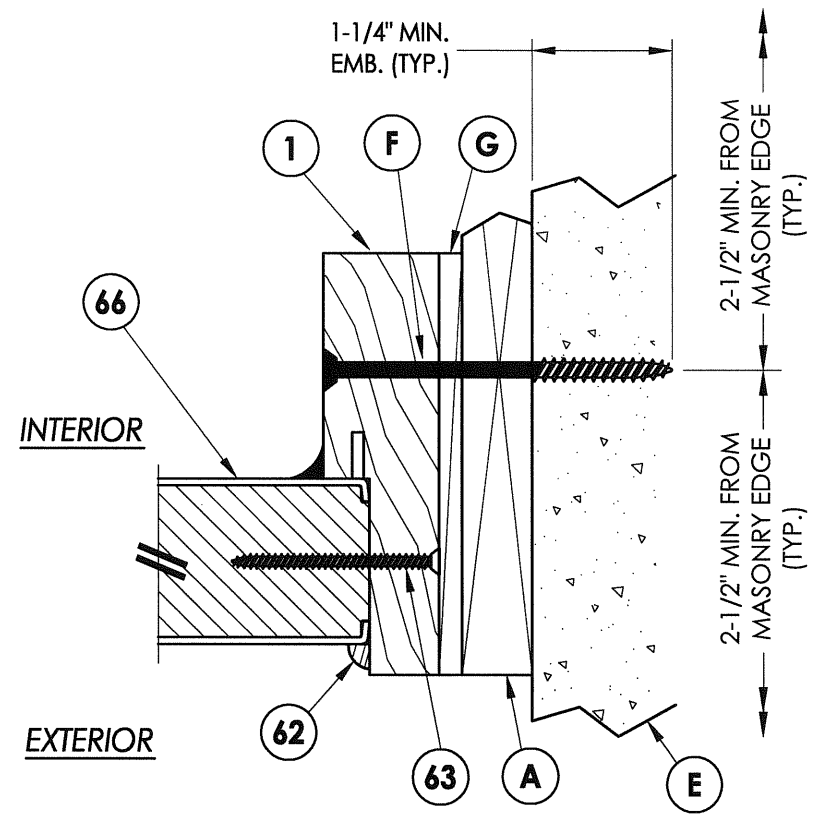
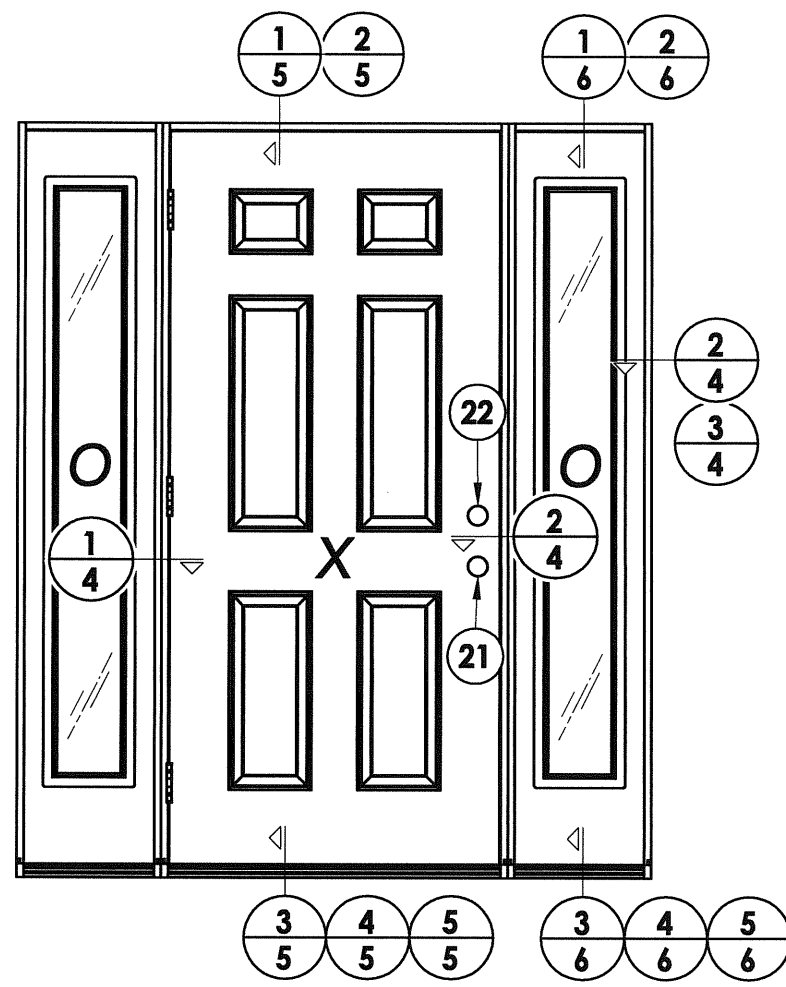
PRODUCT:	TRINITY GLASS INT'L 6 8 PREMIUM OPAQUE
PART OR ASSEMBLY:	SIDELITE PANEL CONSTRUCTION DETAILS AND GLAZING DETAILS

NO.	DATE	BY	REVISIONS

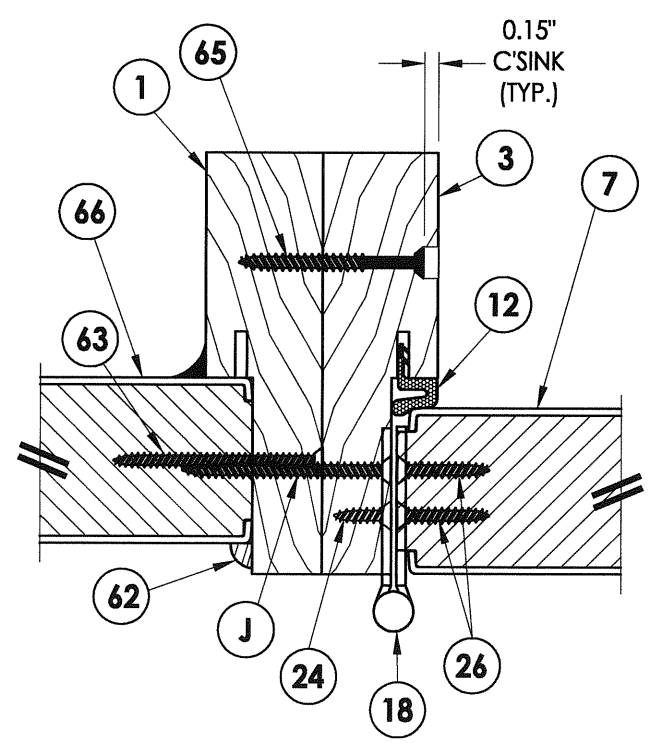
DATE:	4/29/08
SCALE:	N.T.S.
DWG. BY:	YV
CHK. BY:	WWH
DRAWING NO.:	FL-4366.3
SHEET	3 OF 11

Documents Prepared By:
RW BUILDING CONSULTANTS, INC.
 P.O. Box 230 Valrico FL, 33595
 Phone No.: 813.659.9197
 Florida Board of Professional Engineers
 Certificate Of Authorization No. 9813
Wendell W. Hapey 7-11-08
 Wendell W. Hapey, P.E. No. 54158

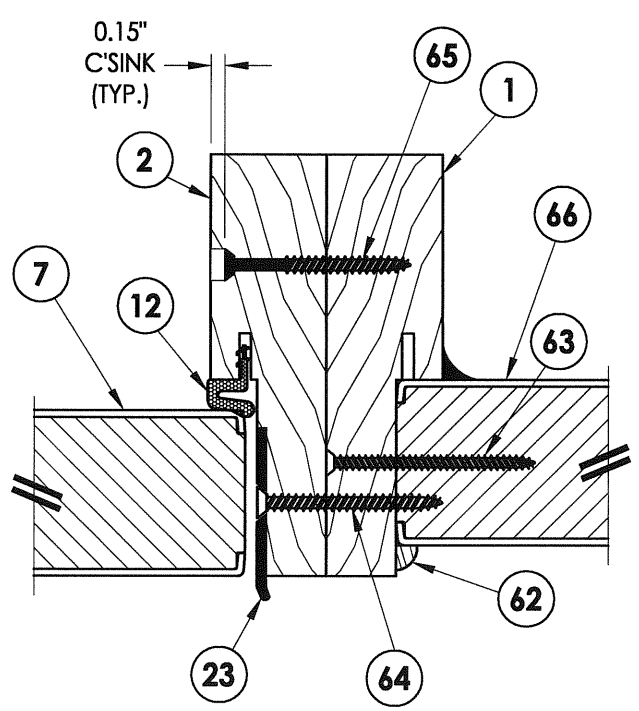
R:\A - Projects\Project Folders\proj 650 - 800\pf742\FL-4366\FL-4366.1-7.DWG, Model



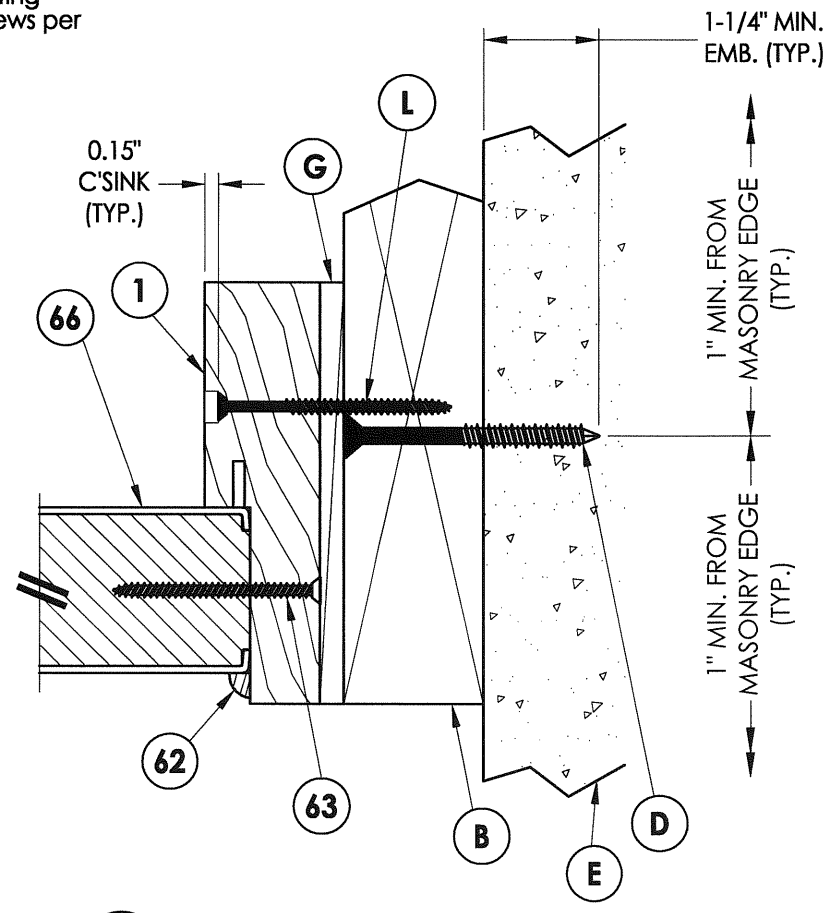
3 HORIZONTAL CROSS SECTION
4 Shown w/1X sub-buck substituting concrete screws for wood screws per Section 1714.5.4.2 of the FBC



1 HORIZONTAL CROSS SECTION
4



4 HORIZONTAL CROSS SECTION
4



2 HORIZONTAL CROSS SECTION
4

Documents Prepared By:
RW BUILDING CONSULTANTS, INC.
 P.O. Box 230 Vairico FL 33595
 Phone No.: 813.659.9197
 Florida Board of Professional Engineers
 Certificate Of Authorization No. 9813
Wendell W. Haney 7-11-08
 Wendell W. Haney, P.E. No. 54158

PRODUCT: TRINITY GLASS INT'L
 6'8" PREMIUM OPAQUE

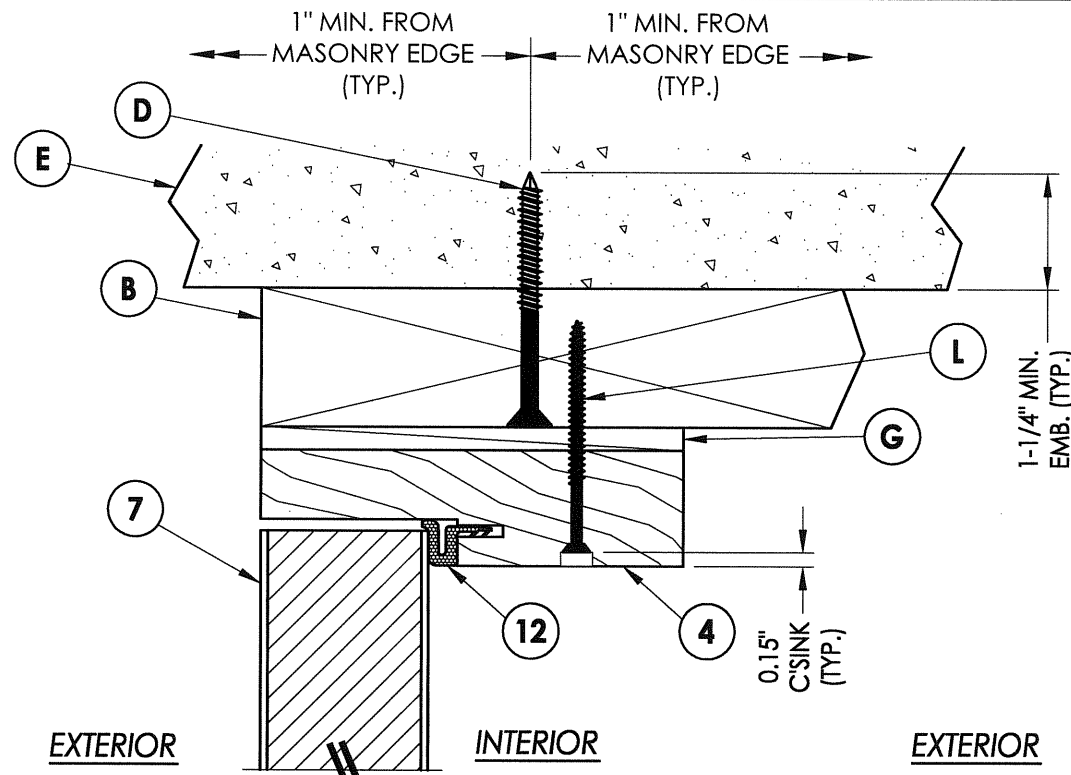
PART OR ASSEMBLY: HORIZONTAL CROSS SECTION

NO.	DATE	BY	REVISIONS

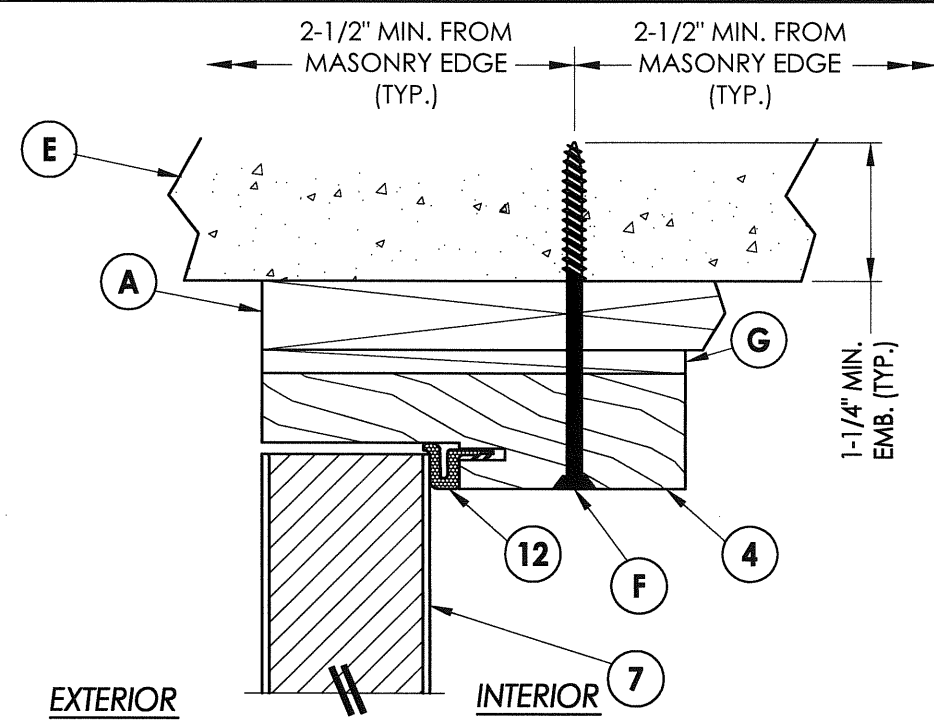
DATE: 4/29/08
 SCALE: N.T.S.
 DWG. BY: YV
 CHK. BY: WWH
 DRAWING NO.: FL-4366.3
 SHEET 4 OF 11

© 2008 R.W. BUILDING CONSULTANTS INC.

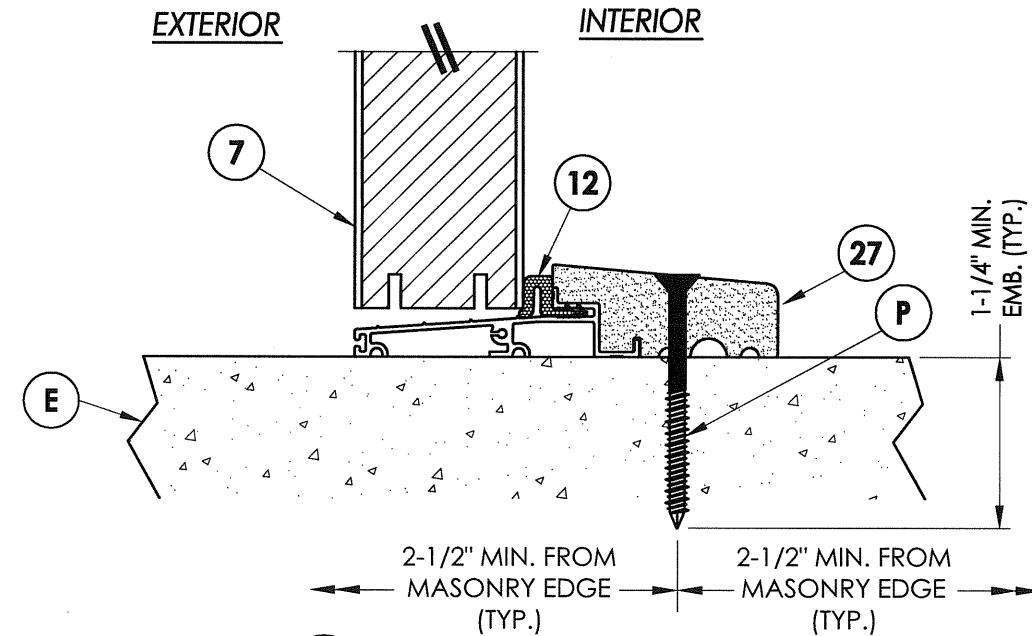
R:\A - Projects\Folders\proj 650 - 800\p742\FL-4366\FL-4366.1-7.DWG, Model



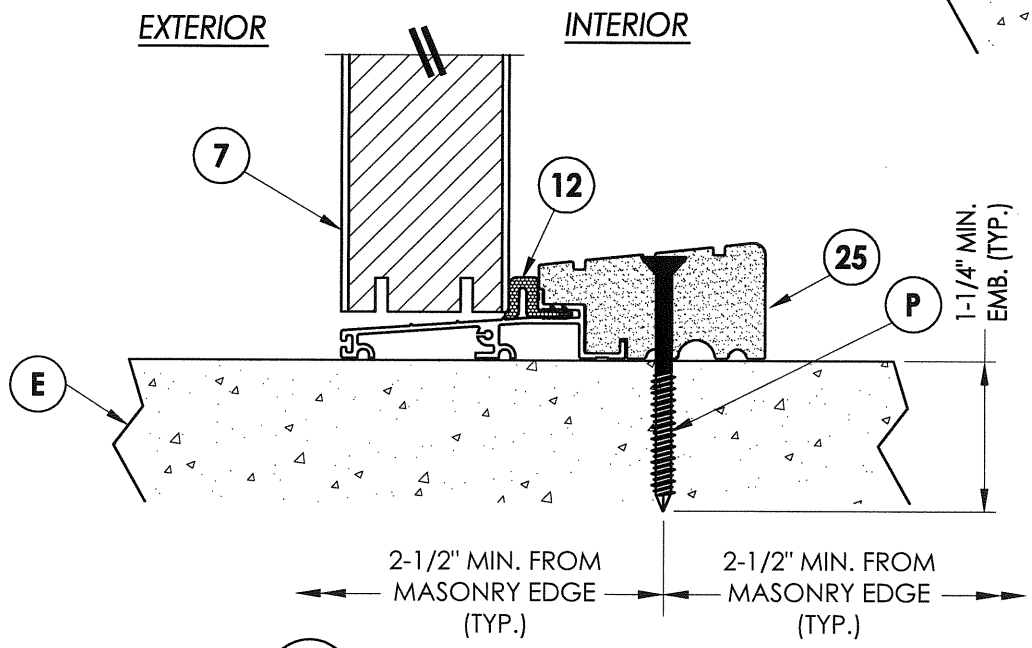
1 VERTICAL CROSS SECTION
5 Outswing shown
 Inswing also approved



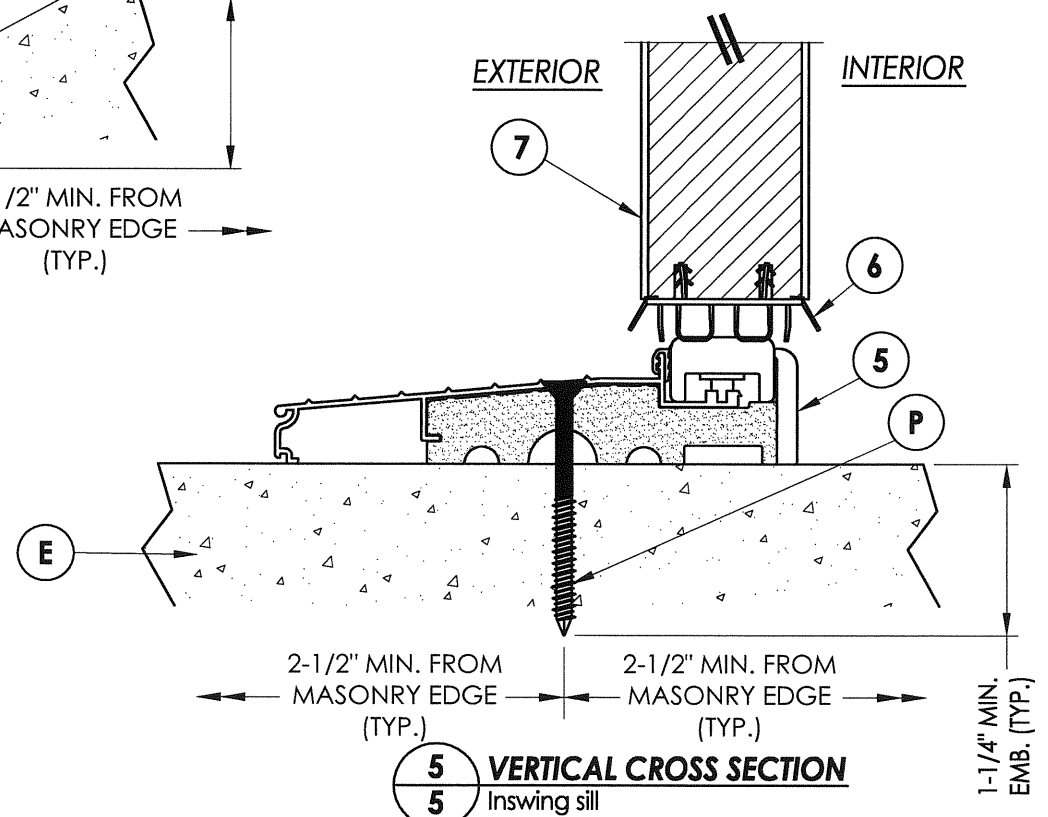
2 VERTICAL CROSS SECTION
5 Shown w/1X sub-buck substituting
 concrete screws for wood screws per
 Section 1714.5.4.2 of the FBC



4 VERTICAL CROSS SECTION
5 Outswing sill



3 VERTICAL CROSS SECTION
5 Outswing sill - high dam



5 VERTICAL CROSS SECTION
5 Inswing sill

Documents Prepared By: **RW BUILDING CONSULTANTS, INC.**
 P.O. Box 230 Vairico FL. 33595
 Phone No.: 813.659.9197
 Florida Board of Professional Engineers
 Certificate Of Authorization No. 9813
Wendell W. Harney
 Wendell W. Harney, P.E. No. 54158

PRODUCT: **TRINITY GLASS INT'L
 6 8 PREMIUM OPAQUE**

PART OR ASSEMBLY: **VERTICAL CROSS SECTIONS**

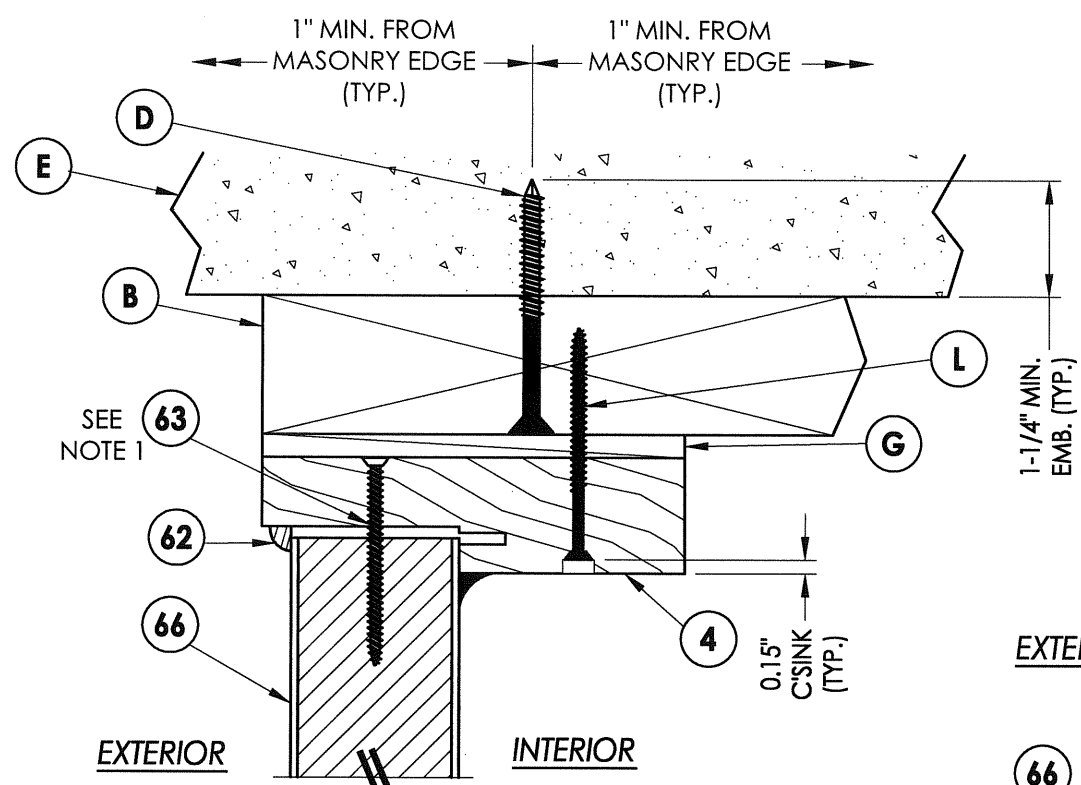
NO.	DATE	BY

REVISIONS

DATE: 4/29/08
 SCALE: N.T.S.
 DWG. BY: YV
 CHK. BY: WWH
 DRAWING NO.: FL-4366.3
 SHEET 5 OF 11

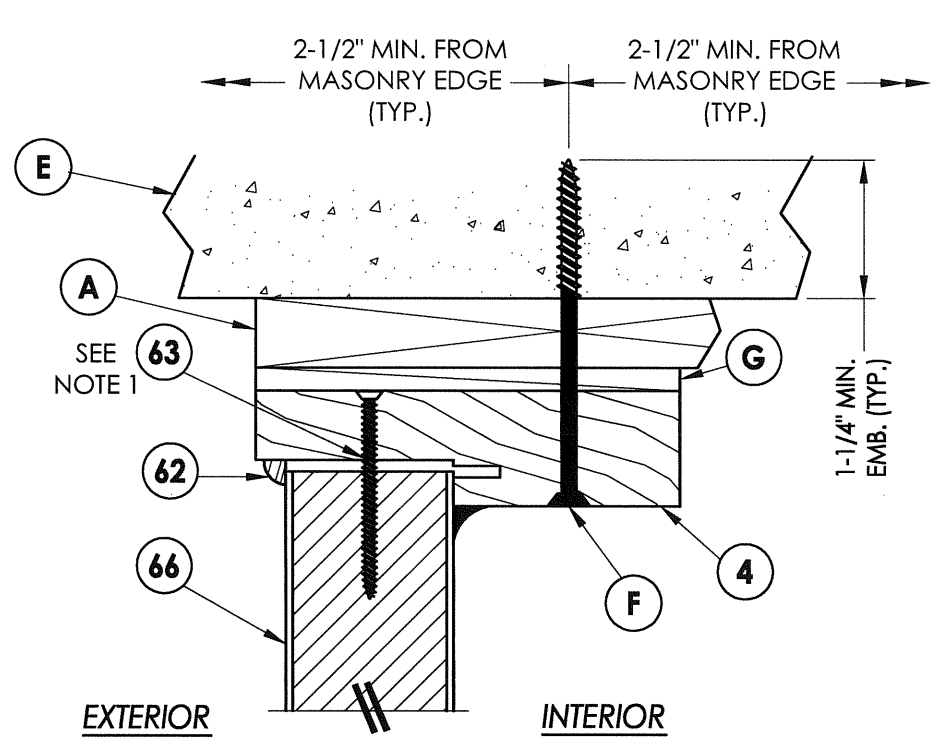
© 2008 R.W. BUILDING CONSULTANTS INC.

R:\A - Projects\Project Folders\proj 650 - 800\p742\FL-4366\FL-4366.1-7.DWG, Model

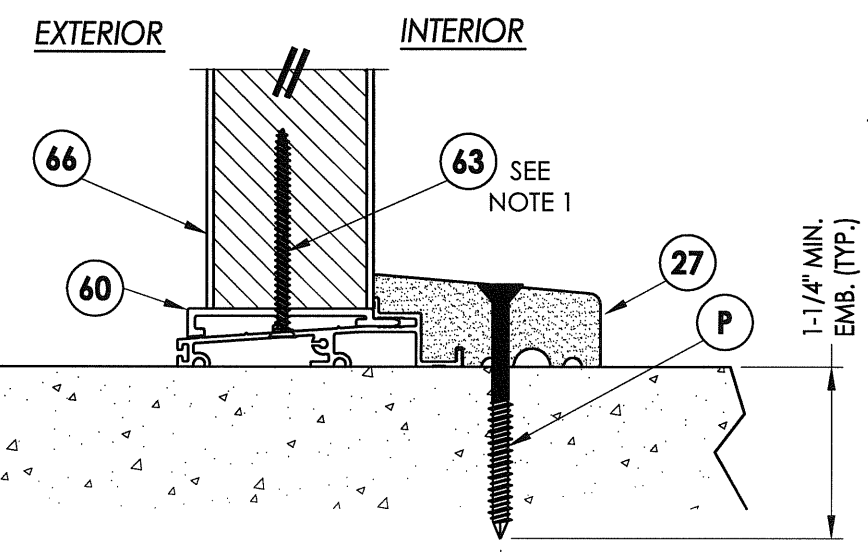


1
6 VERTICAL CROSS SECTION

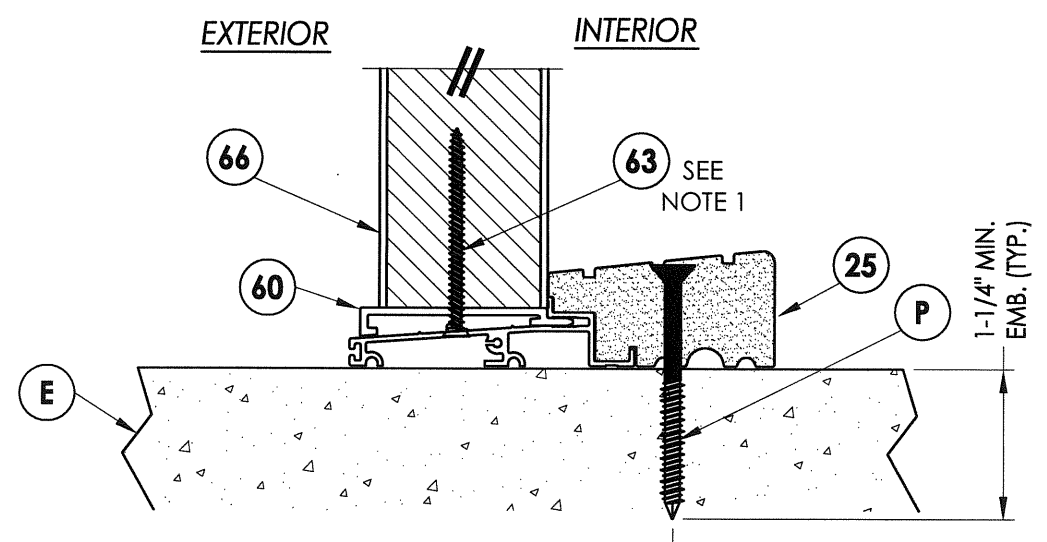
NOTE:
1. Screws thru head and sill jamb located 3" from each end and on center line.



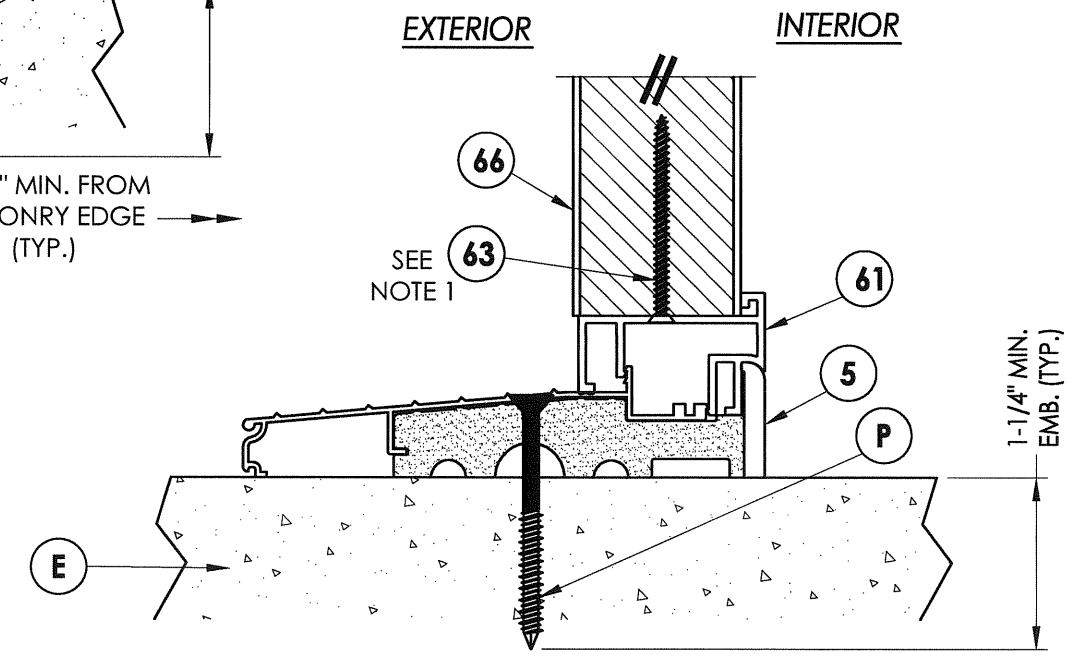
2
6 VERTICAL CROSS SECTION
Shown w/1X sub-buck substituting concrete screws for wood screws per Section 1714.5.4.2 of the FBC



4
6 VERTICAL CROSS SECTION
Outswing sill



3
6 VERTICAL CROSS SECTION
Outswing sill - high dam



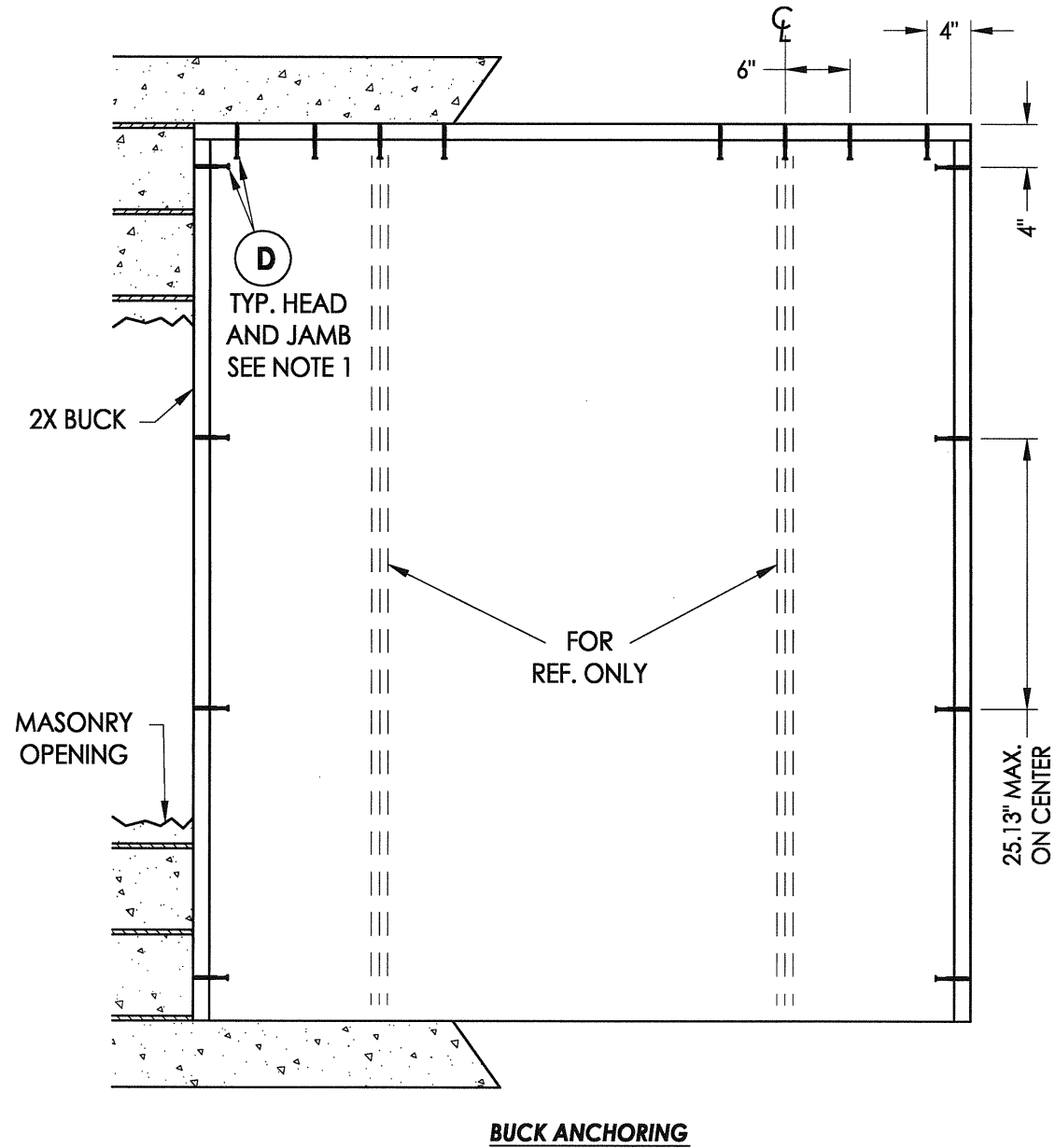
5
6 VERTICAL CROSS SECTION
Inswing sill

Documents Prepared By:
RW BUILDING CONSULTANTS, INC.
P.O. Box 230 Vairico FL 33595
Phone No.: 813.659.9197
Florida Board of Professional Engineers
Certificate Of Authorization No. 9813
Wendell W. Harney 7/11-08
Wendell W. Harney, P.E. No. 54158

PRODUCT:
TRINITY GLASS INT'L
6 8 PREMIUM OPAQUE
PART OR ASSEMBLY:
VERTICAL CROSS SECTIONS

NO.	DATE	BY	REVISIONS

DATE: 4/29/08
SCALE: N.T.S.
DWG. BY: YV
CHK. BY: WWH
DRAWING NO.: FL-4366.3
SHEET 6 OF 11



NOTES:

1. 1/4" Elco Concrete screws anchoring 2x buck require a minimum 1" clearance to masonry edges, a 1-1/4" minimum embedment and a minimum 4" clearance to adjacent concrete screws. Substitution of equal concrete screws from a different supplier may have different edge distance and center distance requirements. Concrete screw locations at the corners and at mullion centerlines may be adjusted to maintain the minimum edge distance to mortar joints. If Concrete screw locations noted as "MAX. ON CENTER" must be adjusted to maintain the minimum edge distance to mortar joints, additional Concrete screws may be required to ensure the maximum on center dimension is not exceeded.

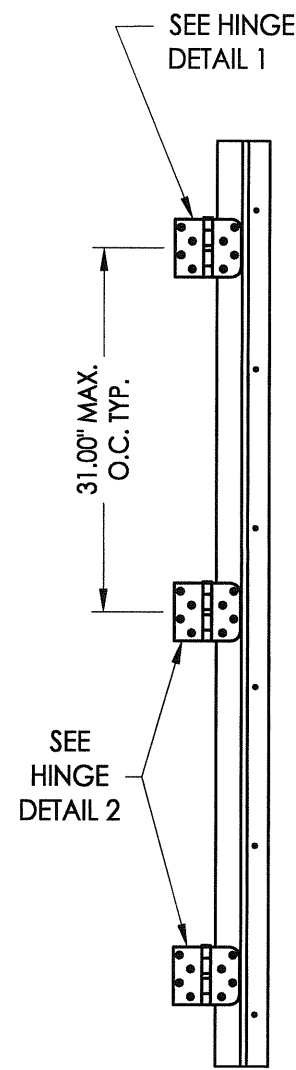
Documents Prepared By:
RW BUILDING CONSULTANTS, INC.
 P.O. Box 230 Vairico FL 33595
 Phone No.: 813.659.9197
 Florida Board of Professional Engineers
 Certificate Of Authorization No. 9813
Wendell W. Hapley 7-11-08
 Wendell W. Hapley, P.E. No. 54158

PRODUCT:
 TRINITY GLASS INT'L
 6 8 PREMIUM OPAQUE

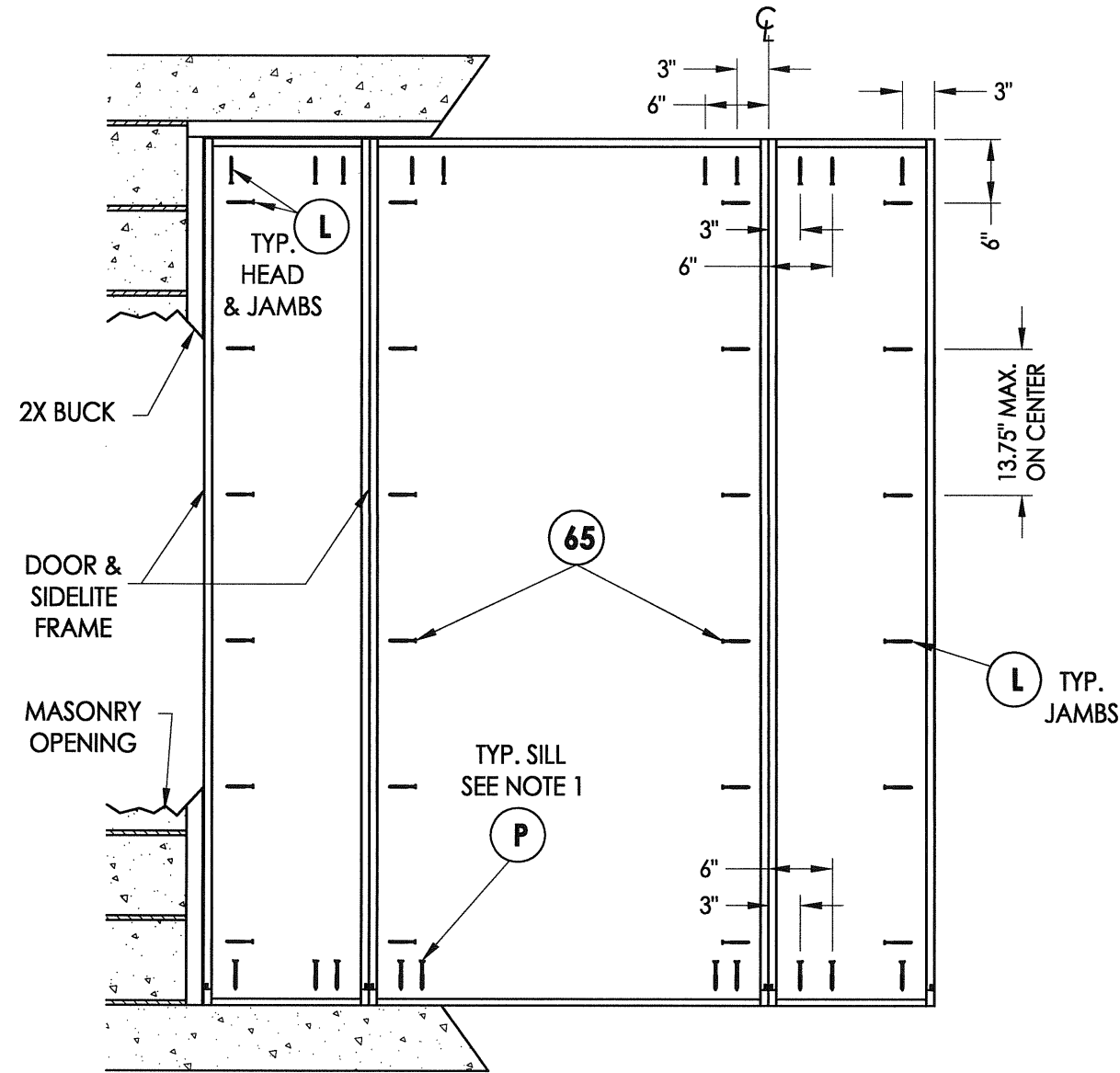
PART OR ASSEMBLY:
 BUCK ANCHORING

NO.	DATE	BY

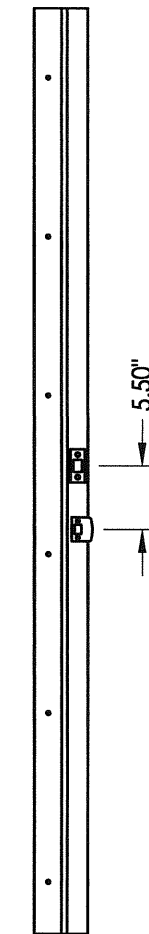
DATE: 4/29/08
 SCALE: N.T.S.
 DWG. BY: YV
 CHK. BY: WWH
 DRAWING NO.:
 FL-4366.3
 SHEET 7 OF 11



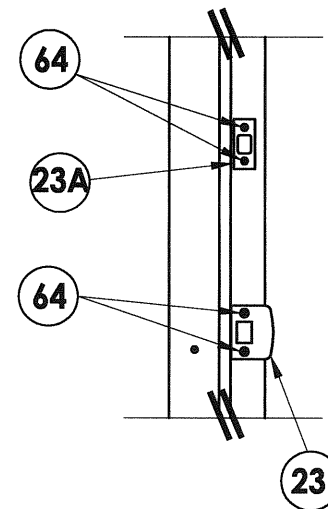
HINGE JAMB



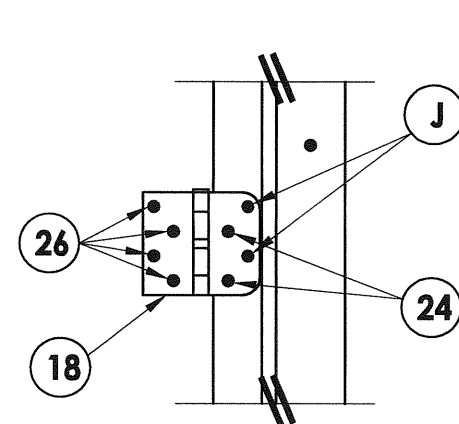
FRAME ANCHORING
Masonry 2X buck construction



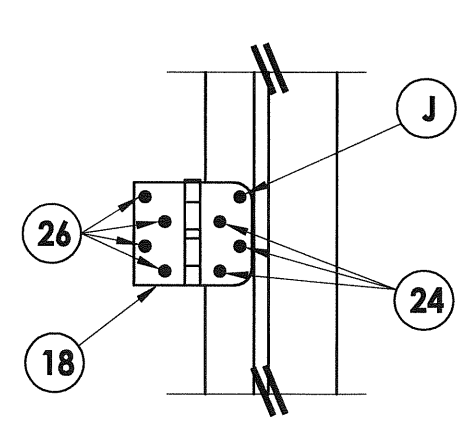
STRIKE JAMB



STRIKE PLATE DETAIL



HINGE DETAIL 1



HINGE DETAIL 2

NOTES:

- 1/4" ITW concrete screws anchoring frame and/or sill require a minimum 2-1/2" clearance to masonry edges, a 1-1/4" minimum embedment and a minimum 3" clearance to adjacent concrete screws. Substitution of equal concrete screws from a different supplier may have different edge distance and center distance requirements. Concrete screw locations at the corners and at mullion centerlines may be adjusted to maintain the minimum edge distance to mortar joints. If Concrete screw locations noted as "MAX. ON CENTER" must be adjusted to maintain the minimum edge distance to mortar joints, additional Concrete screws may be required to ensure the maximum on center dimension is not exceeded.

PRODUCT:	TRINITY GLASS INT'L 6 8 PREMIUM OPAQUE
PART OR ASSEMBLY:	FRAME ANCHORING 2X BUCK MASONRY CONSTRUCTION

NO.	DATE	BY	REVISIONS

DATE:	4/29/08
SCALE:	N.T.S.
DWG. BY:	YV
CHK. BY:	WWH
DRAWING NO.:	FL-4366.3
SHEET	8 OF 11

Documents Prepared By:
RW BUILDING CONSULTANTS, INC.
 P.O. Box 230 Vairico FL. 33595
 Phone No.: 813.659.9197
 Florida Board of Professional Engineers
 Certificate Of Authorization No. 9813
 7-11-03
 Wendell W. Haney, P.E. No. 54158

R:\A - Projects\Project Folders\proj 650 - 800\p742\FL-4366\FL-4366.1-7.DWG, Model

BILL OF MATERIALS			BILL OF MATERIALS		
ITEM	DESCRIPTION	MATERIAL	ITEM	DESCRIPTION	MATERIAL
A	1X BUCK SG >= 0.55	WOOD	39	FIBERGLASS SKIN 0.079" MIN. THICKNESS (Fy = 5,203 PSI MIN.)	FIBERGLASS
B	2X BUCK SG >= 0.55	WOOD	40	#8 X 1-1/8" SELF THREADING SCREW	STEEL
D	1/4" X 2-3/4" ELCO PFH CONCRETE SCREW	STEEL	42	ALUMINUM & BUTYL SPACER SYSTEM	ALUM./BUTYL
E	MASONRY - 3,192 PSI MIN. CONCRETE CONFORMING TO ACI 301 OR HOLLOW BLOCK CONFORMING TO ASTM C90	CONCRETE	44	HOT MELT SEALANT / SILICONE	-
F	1/4" X 3-3/4" ITW PFH CONCRETE SCREW	STEEL	45	LITE FRAME	PC/ASA
G	MAX. 1/4" SHIM SPACE	WOOD	60	SIDELITE SPACER - OUTSWING	PVC
H	1/4" X 3-1/4" ITW PFH CONCRETE SCREW	STEEL	61	SIDELITE SPACER - INSWING	PVC
J	#9 X 2-1/4" PFH WS	STEEL	62	QUARTER ROUND	WOOD
L	#8 X 2-1/2" PFH WS	STEEL	63	#8 x 2-1/4" PFH SCREW	STEEL
P	1/4" X 2-3/4" ITW PFH CONCRETE SCREW	STEEL	64	#8 x 2" PFH SCREW	STEEL
1	SIDELITE JAMB - FINGER-JOINT PINE - SG >= 0.42	WOOD	65	#10 x 2" PFH SCREW	STEEL
2	STRIKE JAMB - FINGER-JOINT PINE - SG >= 0.42	WOOD	66	SIDELITE PANEL - SEE SIDELITE PANEL DETAIL SHEET FOR CONSTRUCTION DETAILS	-
3	HINGE JAMB - FINGER-JOINT PINE - SG >= 0.42	WOOD	73	LVL SIDELITE TOP RAIL (FULL LITE)	POPLAR
4	HEAD - FINGER-JOINT PINE - SG >= 0.42	WOOD	74	LVL SIDELITE BOTTOM RAIL (FULL LITE)	POPLAR
5	INSWING THRESHOLD ALUMINUM W/ COMPOSITE SUBSTRATE	ALUMINUM	75	LVL SIDELITE STILE (FULL LITE)	POPLAR
6	DOOR BOTTOM SWEEP	PVC			
7	DOOR PANEL - SEE DOOR PANEL DETAIL SHEET FOR CONSTRUCTION DETAILS	-			
8	#6 X 1-1/4 PFH DRYWALL SCREW	STEEL			
12	WEATHER STRIP QEBD650 Q-LON	-			
18	3.983" X 4.0" HINGE MIN 0.098" THICK	STEEL			
19	SILLKEY	PC/ASA			
21	KWIKSET LOCK -SERIES 200 PASSAGE	STEEL			
22	KWIKSET DEADBOLT -SERIES 600	STEEL			
23	STRIKE PLATE	STEEL			
23A	DEADBOLT PLATE	STEEL			
24	#9 X 5/8" PFH WS	STEEL			
25	OUTSWING HIGH-DAM THRESHOLD ALUMINUM W/ COMPOSITE SUBSTRATE	ALUM./ COMP.			
26	#9 X 1.0" PFH WS	STEEL			
27	OUTSWING THRESHOLD ALUMINUM W/ COMPOSITE SUBSTRATE	ALUM./ COMP.			
30	LATCH STILE - SG >= 0.42	LVL/PVC			
31	LVL LOCK BLOCK	POPLAR			
32	HINGE STILE - SG >= 0.42	LVL/PVC			
33	TOP RAIL - POPLAR LVL & WPC COMBINATION	POPLAR/WPC			
34	BOTTOM RAIL - POPLAR LVL & WPC COMBINATION	POPLAR/WPC			

Documents Prepared By: *RW*
 BUILDING CONSULTANTS, INC.
 P.O. Box 230 Valrico FL 33595
 Phone No.: 813.659.9197
 Florida Board of Professional Engineers
 Certificate Of Authorization No. 9813
Wendell W. Halsey 7-11-08
 Wendell W. Halsey, P.E. No. 54158

PRODUCT: TRINITY GLASS INT'L 6'8" PREMIUM OPAQUE	PART OR ASSEMBLY: BILL OF MATERIALS
NO.	DATE
NO.	BY
REVISIONS	
DATE: 4/29/08	
SCALE: N.T.S.	
DWG. BY: YV	
CHK. BY: WWH	
DRAWING NO.: FL-4366.3	
SHEET 11 OF 11	