



Trinity Glass
INTERNATIONAL

4621 192nd STREET E. TACOMA, WA 98446

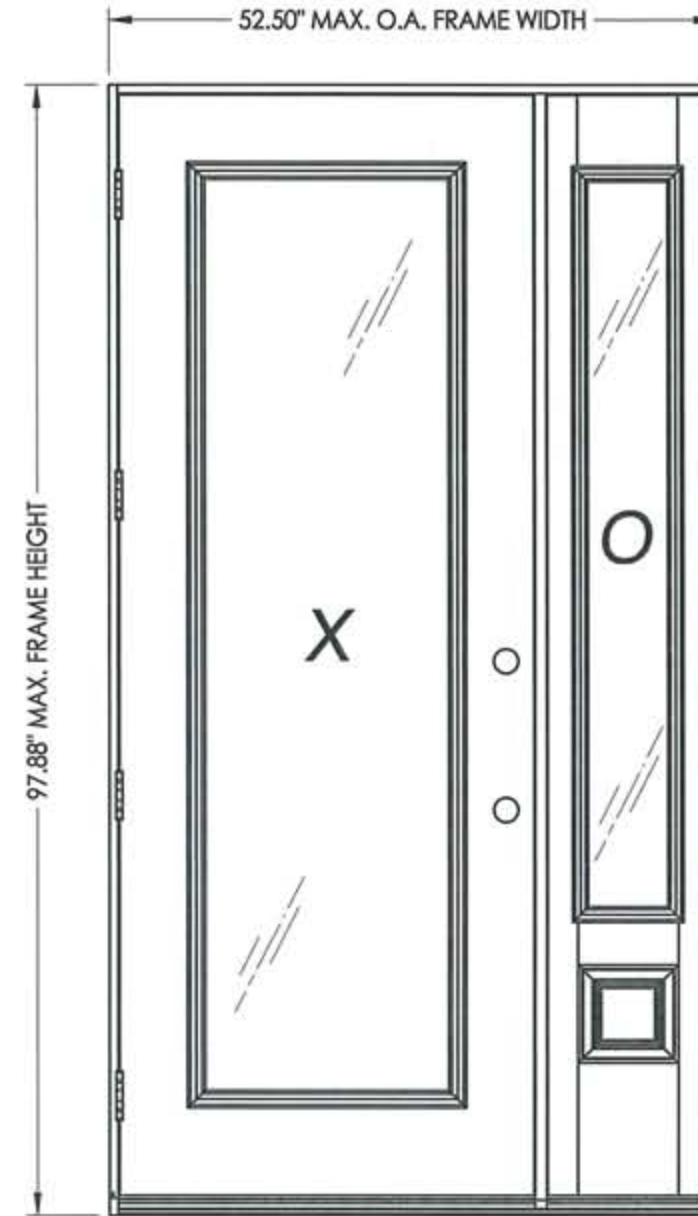
GLAZED PREMIUM FIBERGLASS DOOR IN SWING / OUT SWING "NON-IMPACT"

GENERAL NOTES

1. This product has been evaluated and is in compliance with the 2007 Florida Building Code (FBC) structural requirements including the "High Velocity Hurricane Zone" (HVHZ).
2. Product anchors shall be as listed and spaced as shown on details. Anchor embedment to base material shall be beyond wall dressing or stucco.
3. When used in the "HVHZ" this product is required to be protected with an impact resistant covering that complies with Section 1626 of the 2007 FBC.
4. When used in areas outside of the "HVHZ" requiring wind borne debris protection this product is required to be protected with an impact resistant covering that complies with Section 1609.1.2 of the FBC.
5. For 2x stud framing construction, anchoring of these units shall be the same as that shown for 2x buck masonry construction.
6. Site conditions that deviate from the details of this drawing require further engineering analysis by a licensed engineer or registered architect.
7. Outswing configuration using threshold item #25 meet water infiltration requirements for "HVHZ".
8. Inswing configurations and outswing configuration using threshold item #27 do not meet the water infiltration requirements for the "HVHZ" and shall be installed only in non-habitable areas or at habitable locations protected by an overhang or canopy such that the angle between the edge of canopy or overhang to sill is less than 45 degrees.

TABLE OF CONTENTS

SHEET #	DESCRIPTION
1	Typical elevations, design pressures & general notes
2	Door panel construction details & glazing details
3	Sidelite panel construction details & glazing details
4	Horizontal cross sections
5	Vertical cross sections
6	Vertical cross sections
7	Buck anchoring
8	Frame anchoring - 2X buck masonry construction
9	Frame anchoring - 1X buck masonry construction
10	Components
11	Bill of materials



CONTINUOUS HEADER AND SILL

SWING	MAX. FRAME DIMENSION	GLASS TYPE	DESIGN PRESSURE (PSF)	
			POSITIVE	NEGATIVE
IN SWING	52.50" x 97.88"	G1	+47.0	-47.0
OUT SWING	52.50" x 96.75"		+47.0	-47.0

Documents Prepared By:

RW BUILDING CONSULTANTS, INC.
P.O. Box 230 Valrico FL 33595
Phone No.: 813.659.9197
Florida Board of Professional Engineers
Certificate of Authorization No. 9813
LFS 4-8-09
Lyndon F. Schmidt, P.E. No. 43409

PRODUCT:
TRINITY GLASS INT'L
PREMIUM LITE FIBERGLASS

PART OR ASSEMBLY:
TYPICAL ELEVATION, DESIGN PRESSURES & GENERAL NOTES

NO.	DATE	BY	REVISIONS

DATE: 5/20/08

SCALE: N.T.S.

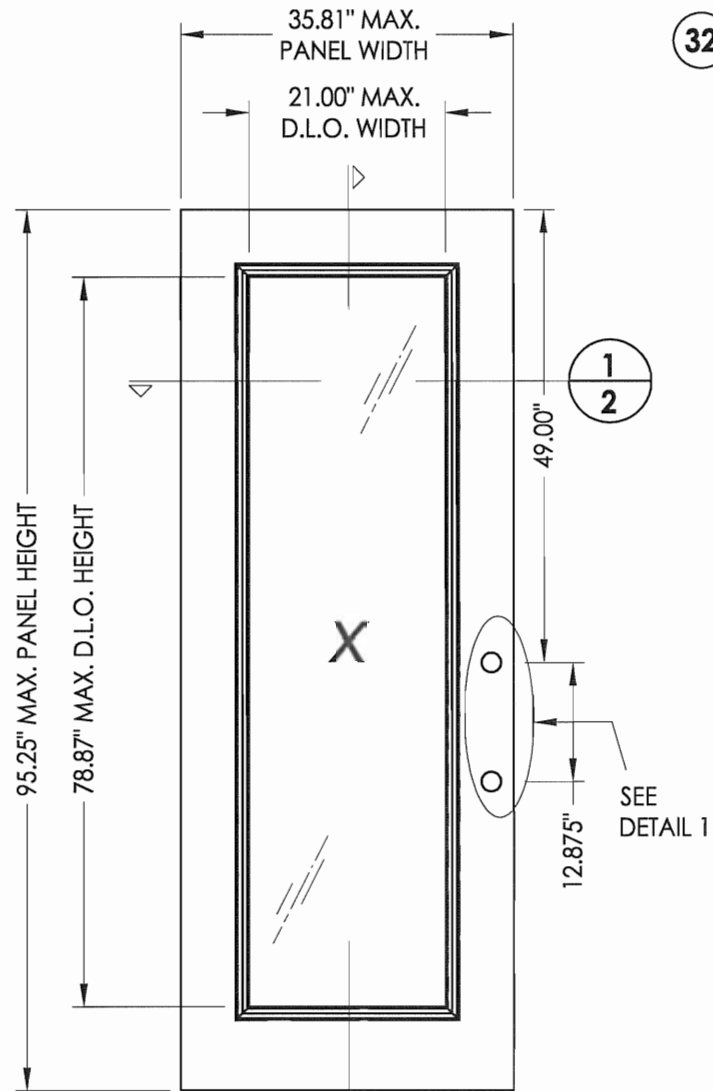
DWG. BY: YV

CHK. BY: LFS

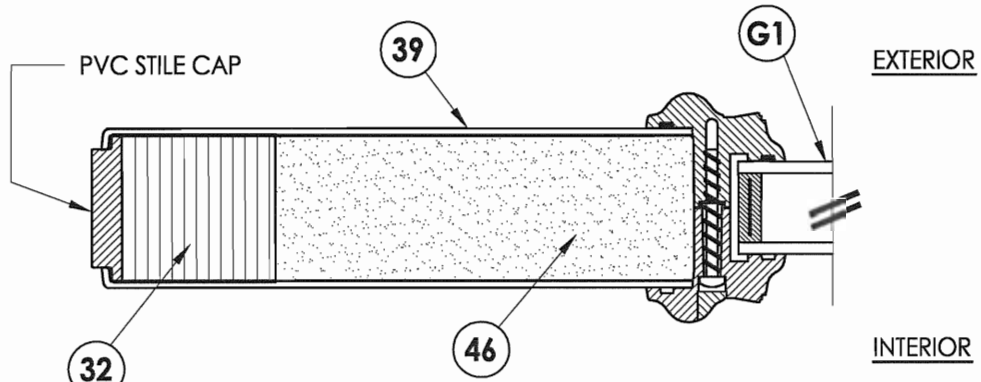
DRAWING NO.:

FL-11174.2

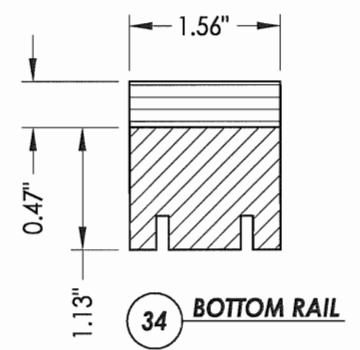
SHEET 1 OF 11



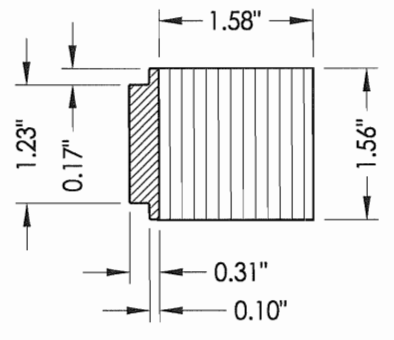
7 PREMIUM LIPLITE FIBERGLASS DOOR



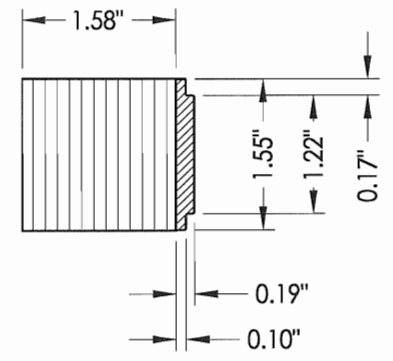
1 HORIZONTAL CROSS SECTION



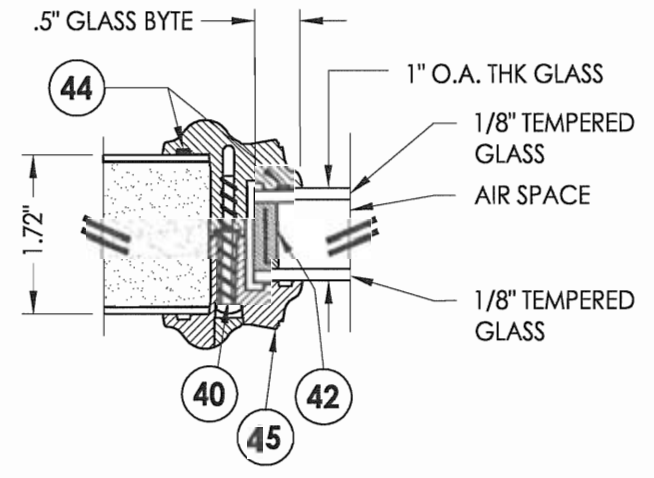
34 BOTTOM RAIL



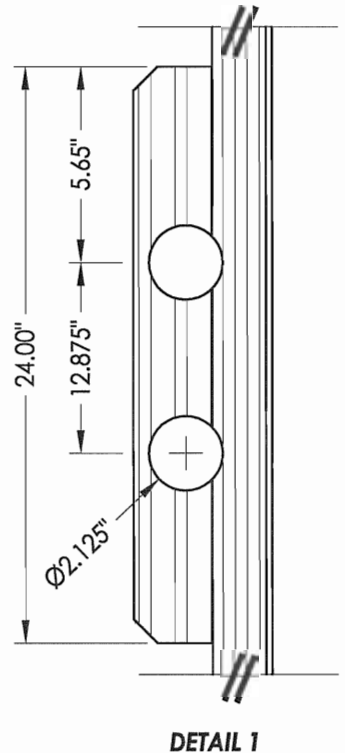
32 HINGE STILE



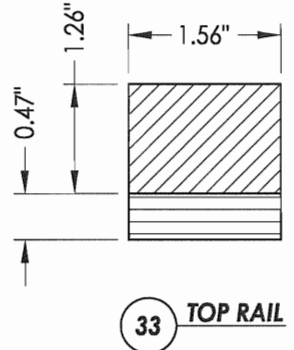
30 LATCH STILE



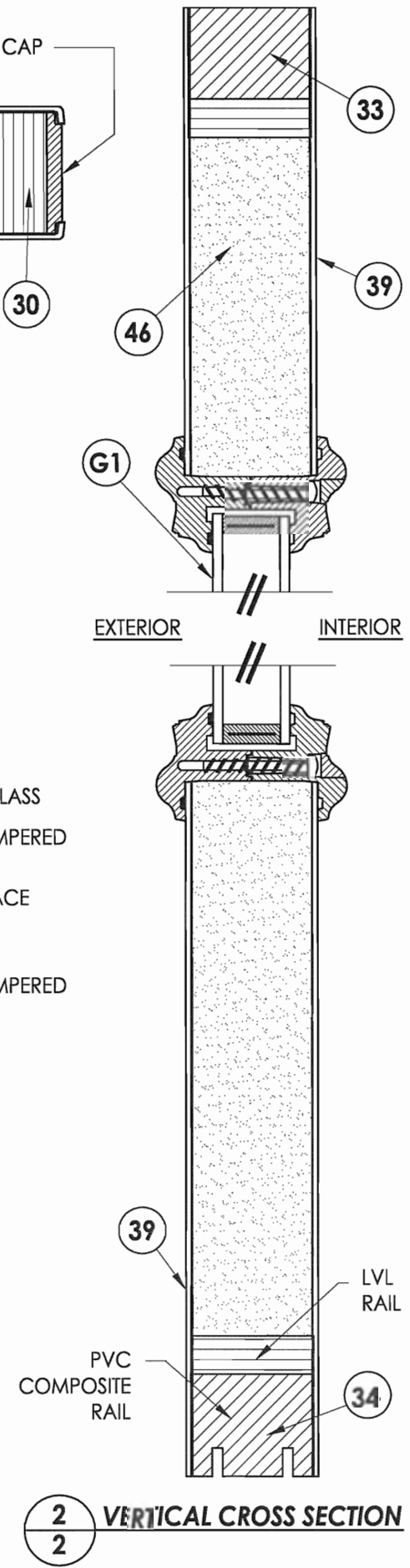
G1 GLAZING DETAIL



DETAIL 1



33 TOP RAIL



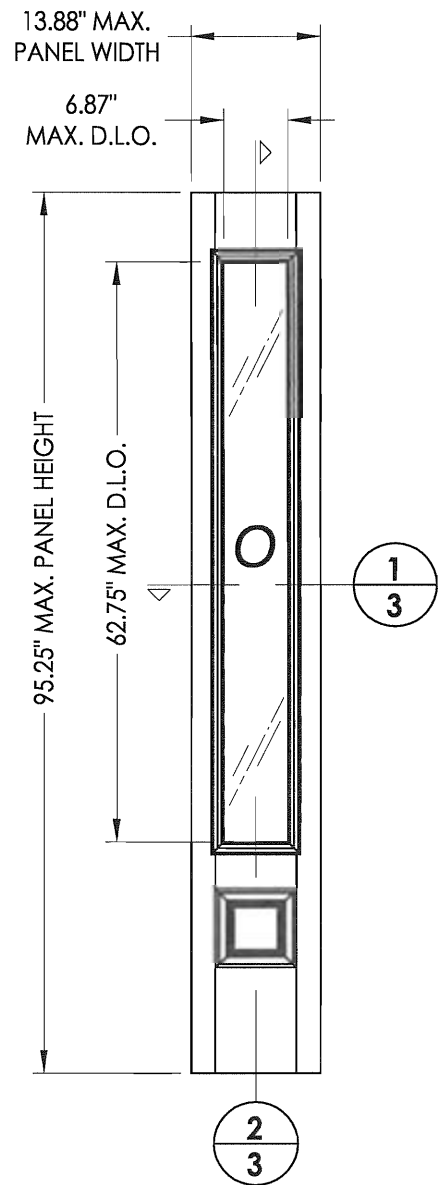
2 VERTICAL CROSS SECTION

Documents Prepared By:
RW BUILDING CONSULTANTS, INC.
 P.O. Box 230 Valrico FL 33595
 Phone No.: 813.659.9197
 Florida Board of Professional Engineers
 Certificate of Authorization No. 9813
 Lyndon F. Schmidt, P.E. No. 43409

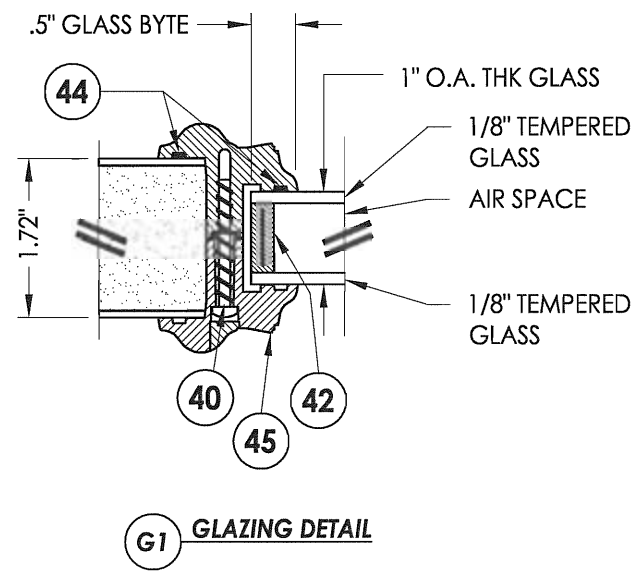
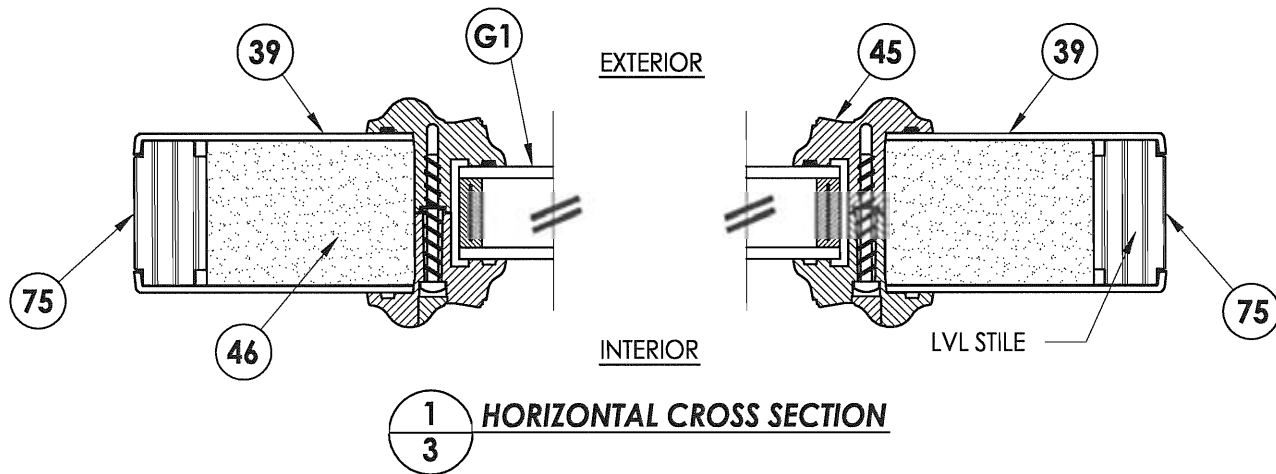
PRODUCT:
 TRINITY GLASS INT'L
 PREMIUM LIPLITE FIBERGLASS
 PART OR ASSEMBLY:
 DOOR PANEL CONSTRUCTION
 DETAILS AND GLAZING DETAILS

NO.	DATE	BY	REVISIONS

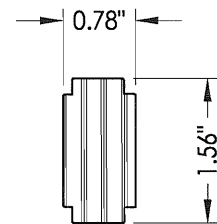
DATE: 5/20/08
 SCALE: N.T.S.
 DWG. BY: YV
 CHK. BY: LFS
 DRAWING NO.: FL-11174.2
 SHEET 2 OF 11



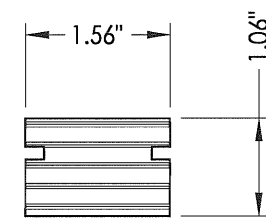
66 PREMIUM LIPLITE FIBERGLASS SIDELITE



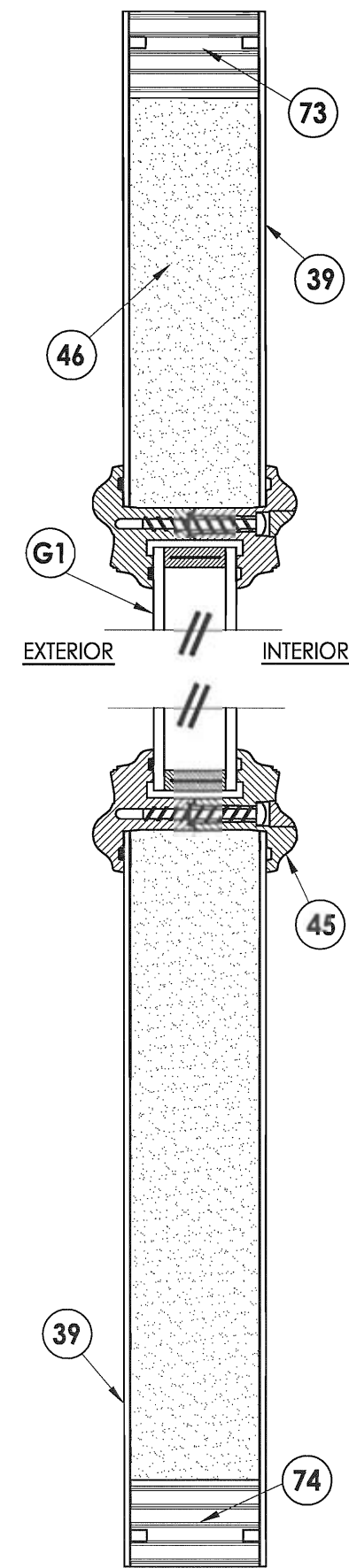
G1 GLAZING DETAIL



75 SIDELITE STILE



74 73 TOP & BOTTOM RAIL SIDELITE



2/3 VERTICAL CROSS SECTION

PRODUCT: TRINITY GLASS INT'L PREMIUM LIPLITE FIBERGLASS
 PART OR ASSEMBLY: SIDELITE PANEL CONSTRUCTION DETAILS AND GLAZING DETAILS

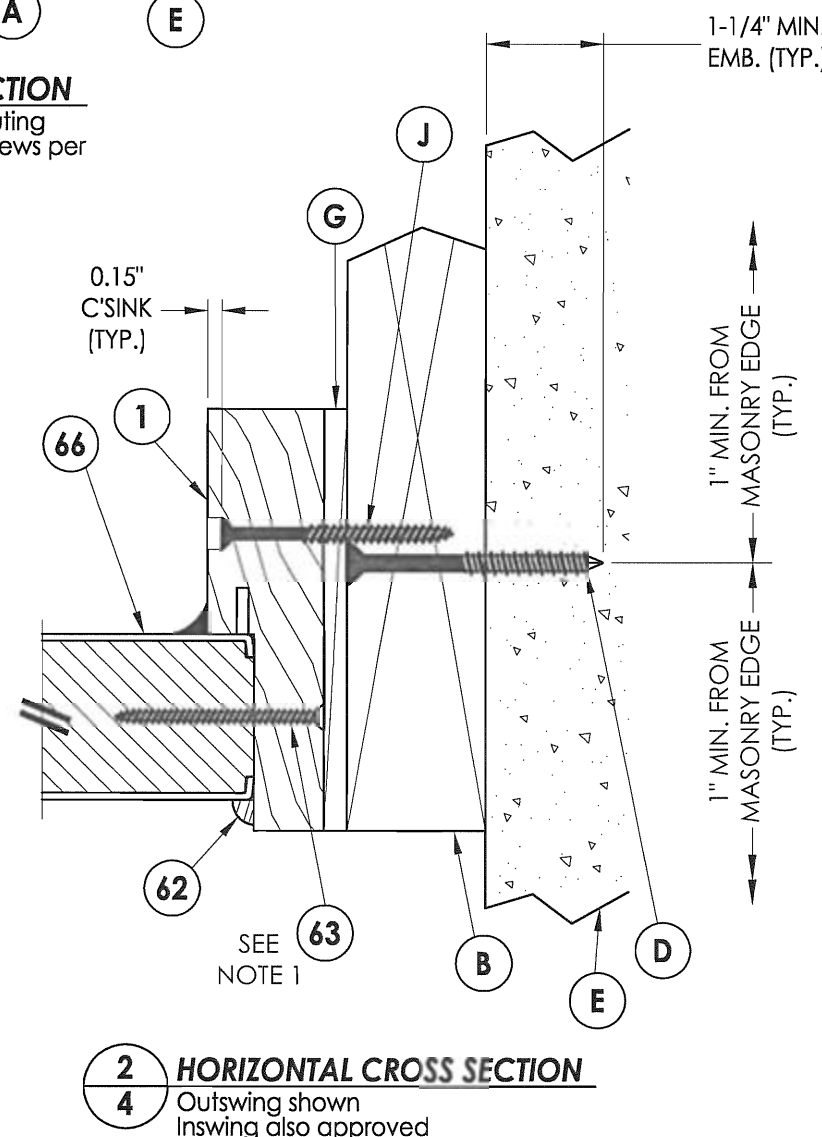
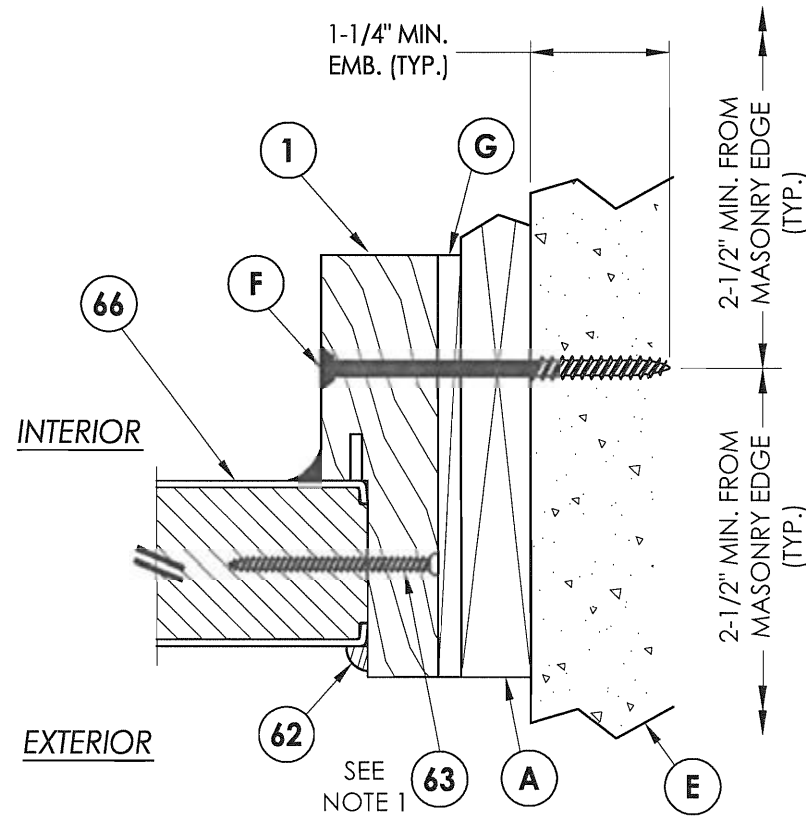
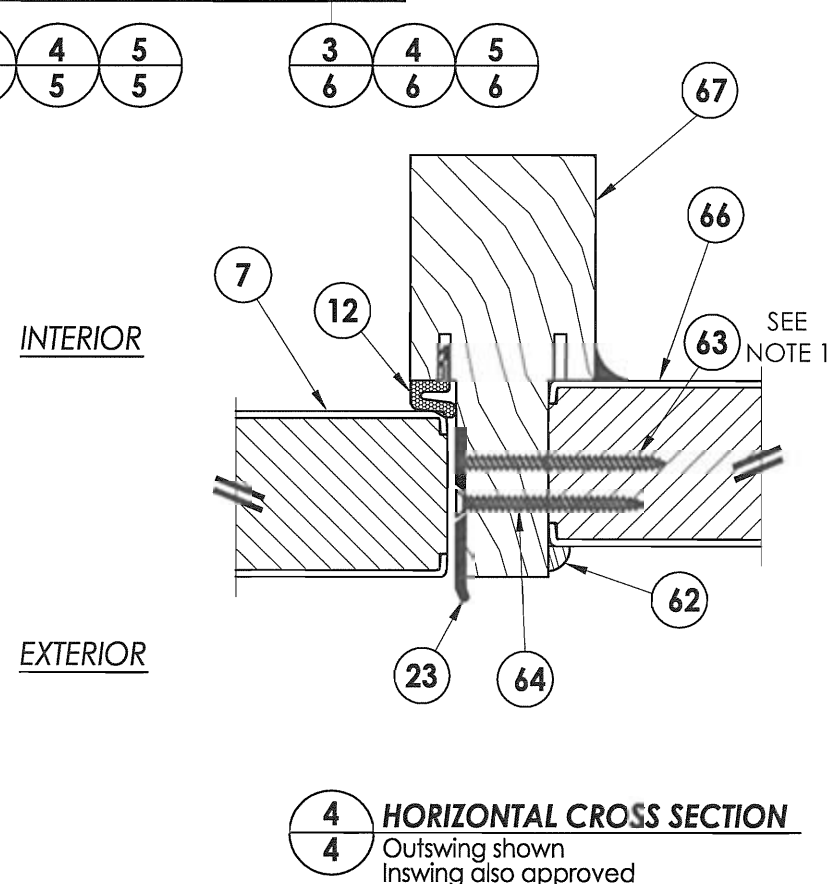
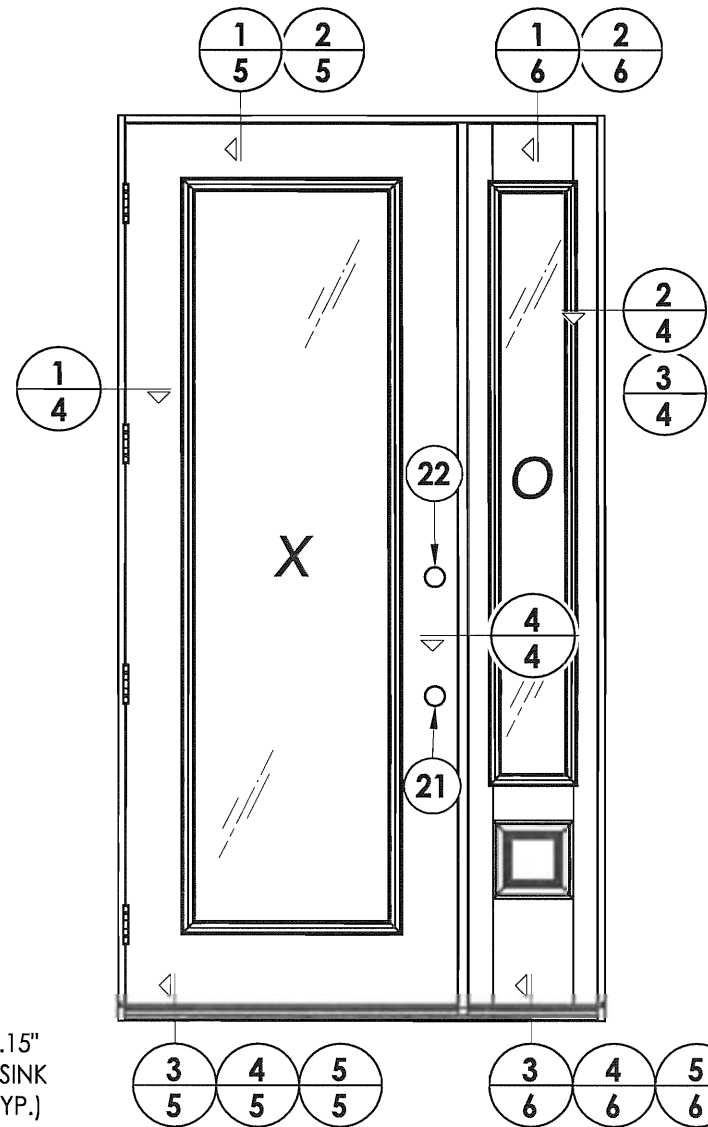
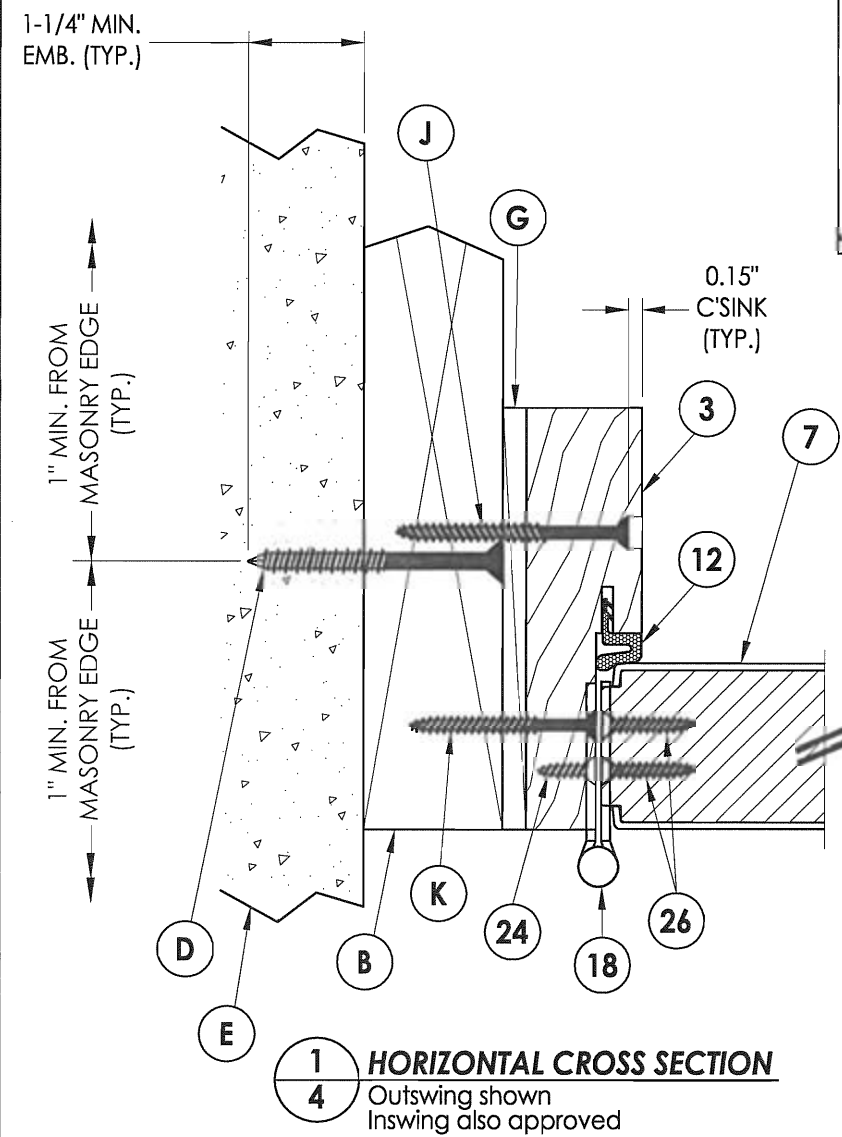
NO.	DATE	BY

DATE: 5/20/08
 SCALE: N.T.S.
 DWG. BY: YV
 CHK. BY: LFS
 DRAWING NO.: FL-11174.2
 SHEET 3 OF 11

Documents Prepared By:

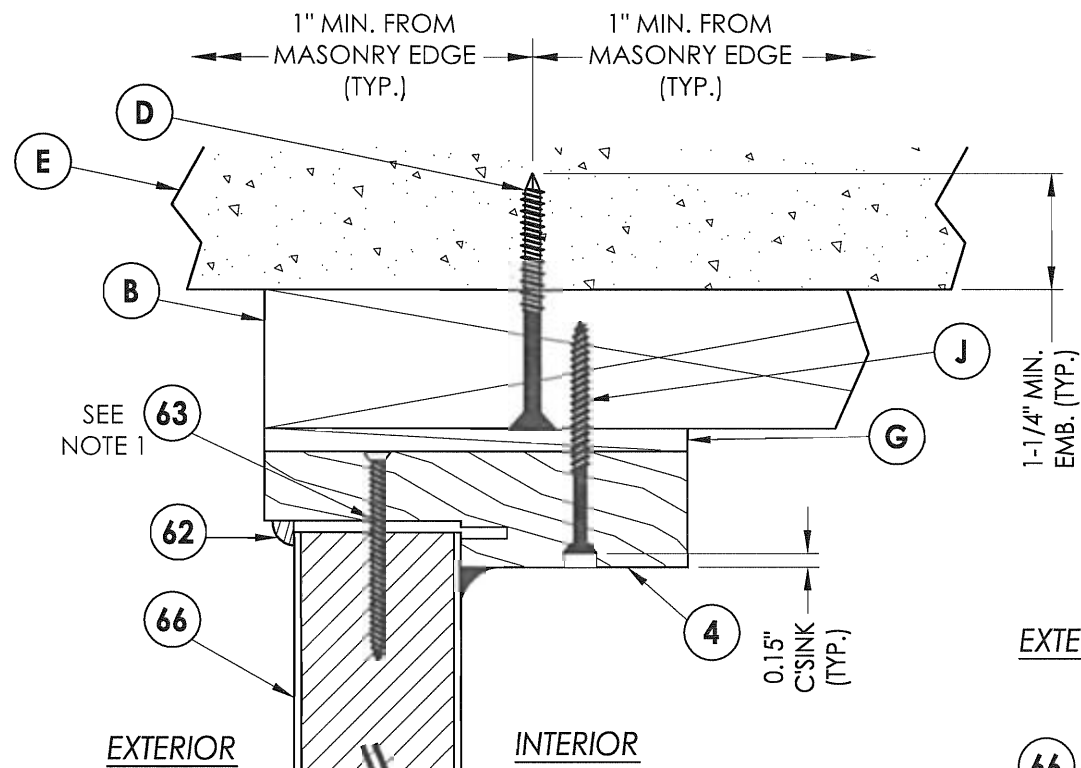
RW BUILDING CONSULTANTS, INC.
 P.O. Box 230 Valrico FL 33595
 Phone No.: 813.659.9197
 Florida Board of Professional Engineers
 Certificate of Authorization No. 9813
RWSL 4.5.09
 Lyndon F. Schmidt, P.E. No. 43409

NOTE:
 1. Sidelite ass'y fastener; 6" from each end and 6 more screws equally spaced between. (8 screws total per jamb.)



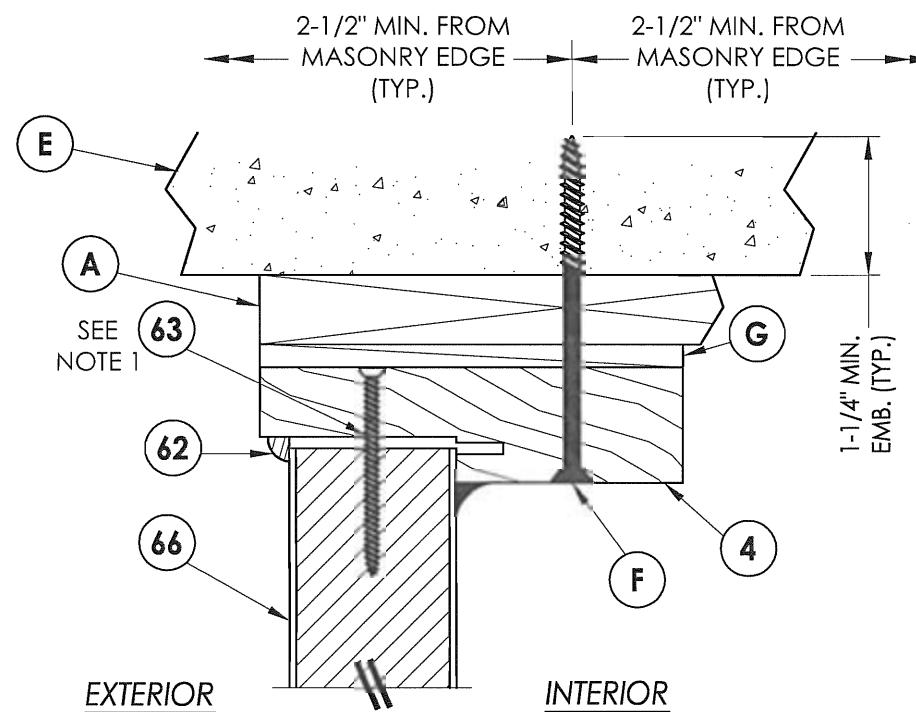
Documents Prepared By:		BUILDING CONSULTANTS, INC. P.O. Box 230 Valrico FL, 33595 Phone No.: 813.659.9197 Florida Board of Professional Engineers Certificate of Authorization No. 9813 1752-4809 Lyndon F. Schmidt, P.E. No. 43409	
PRODUCT:	TRINITY GLASS INT'L PREMIUM LIPLITE FIBERGLASS	PART OR ASSEMBLY: HORIZONTAL CROSS SECTIONS	
DATE:	5/20/08	NO.	DATE
SCALE:	N.T.S.	BY	REVISIONS
DWG. BY:	YV		
CHK. BY:	LFS		
DRAWING NO.:	FL-11174.2		
SHEET	4	OF	11

R:\A - Projects\Project Folders\Proj 1101 - 1200\p1160\DWG Drawings\FL-11174\FL-11174-1-7.dwg, Model

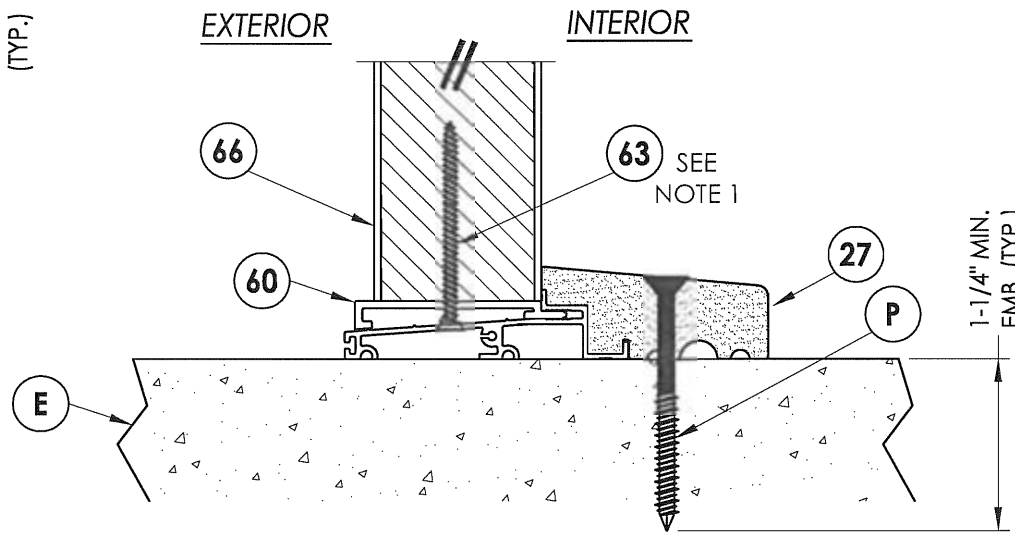


1
6 VERTICAL CROSS SECTION

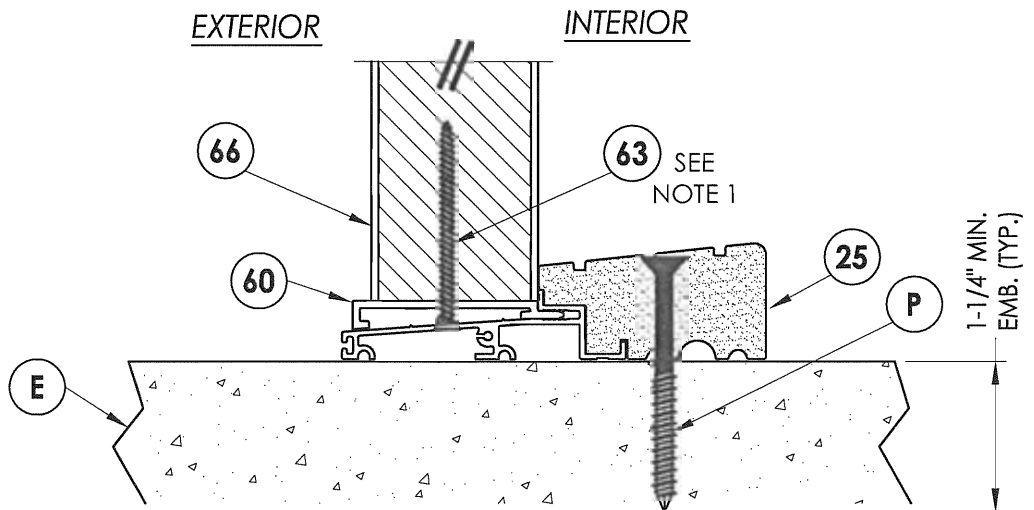
NOTE:
1. Screws thru head and sill jamb located 3" from each end and on center line.



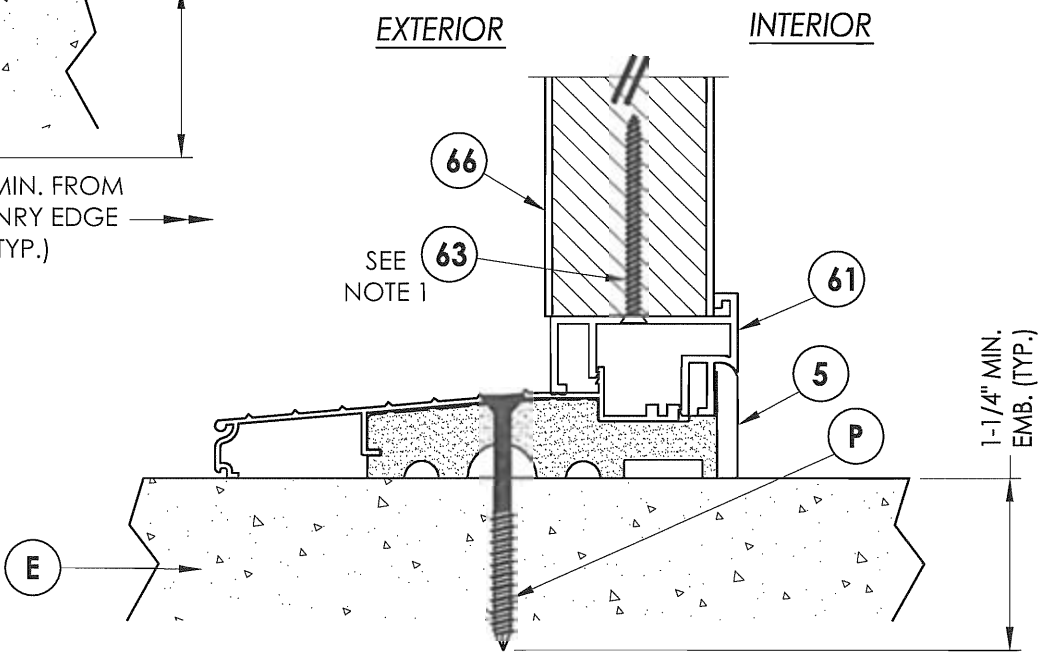
2
6 VERTICAL CROSS SECTION
Shown w/1X sub-buck substituting concrete screws for wood screws per Section 1714.5.4.2 of the FBC



4
6 VERTICAL CROSS SECTION
Outswing sill



3
6 VERTICAL CROSS SECTION
Outswing sill - high dam



5
6 VERTICAL CROSS SECTION
Inswing sill

Documents Prepared By:

RW BUILDING CONSULTANTS, INC.
P.O. Box 230 Valrico FL, 33595
Phone No.: 813.659.9197
Florida Board of Professional Engineers
Certificate Of Authorization No. 9813
Lyndon F. Schmiat, P.E. No. 43409

PRODUCT:
TRINITY GLASS INT'L
PREMIUM LIPLITE FIBERGLASS

PART OR ASSEMBLY:
VERTICAL CROSS SECTIONS

NO.	DATE	BY	REVISIONS

DATE: 5/20/08

SCALE: N.T.S.

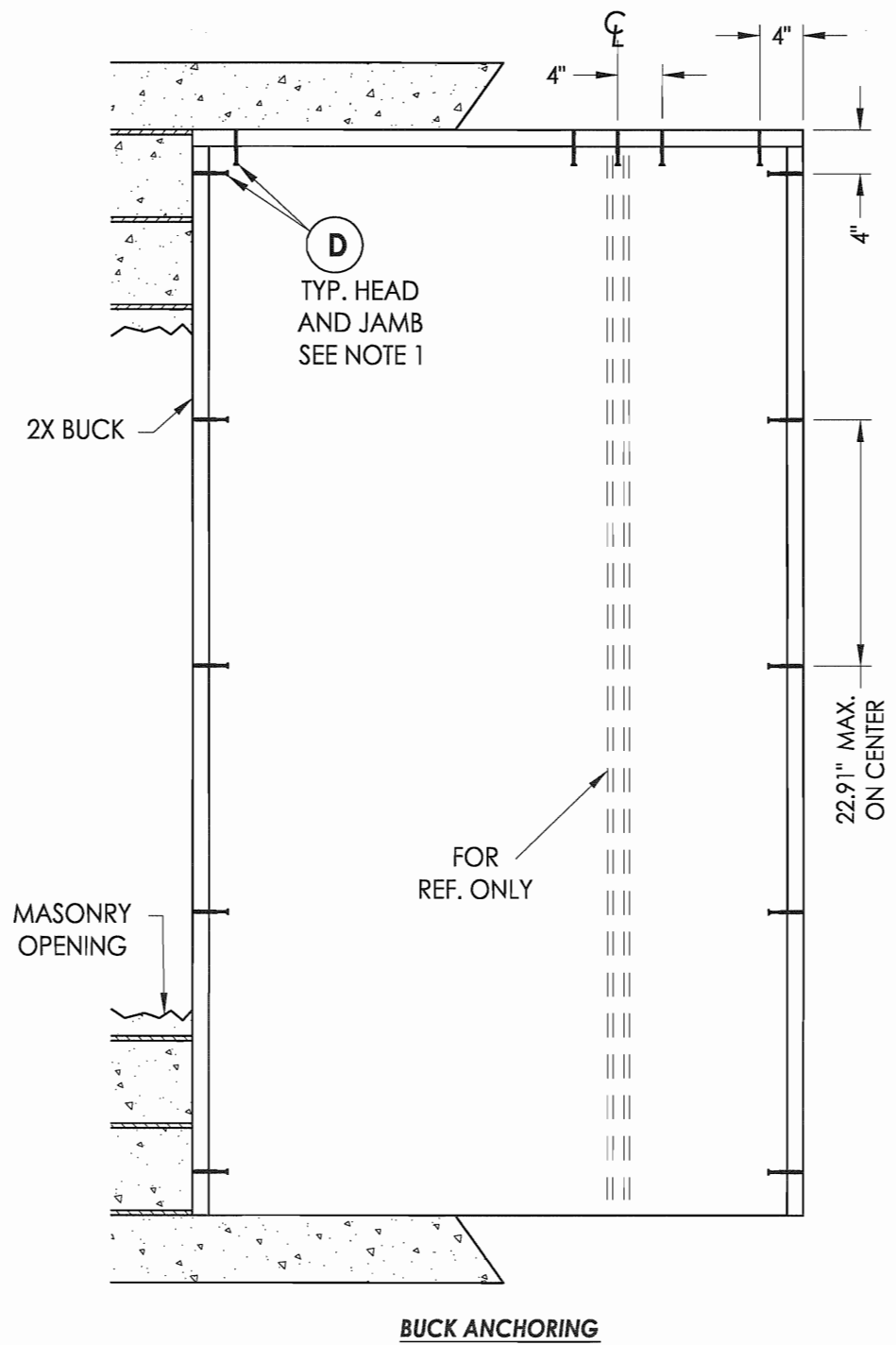
DWG. BY: YV

CHK. BY: LFS

DRAWING NO.:

FL-11174.2

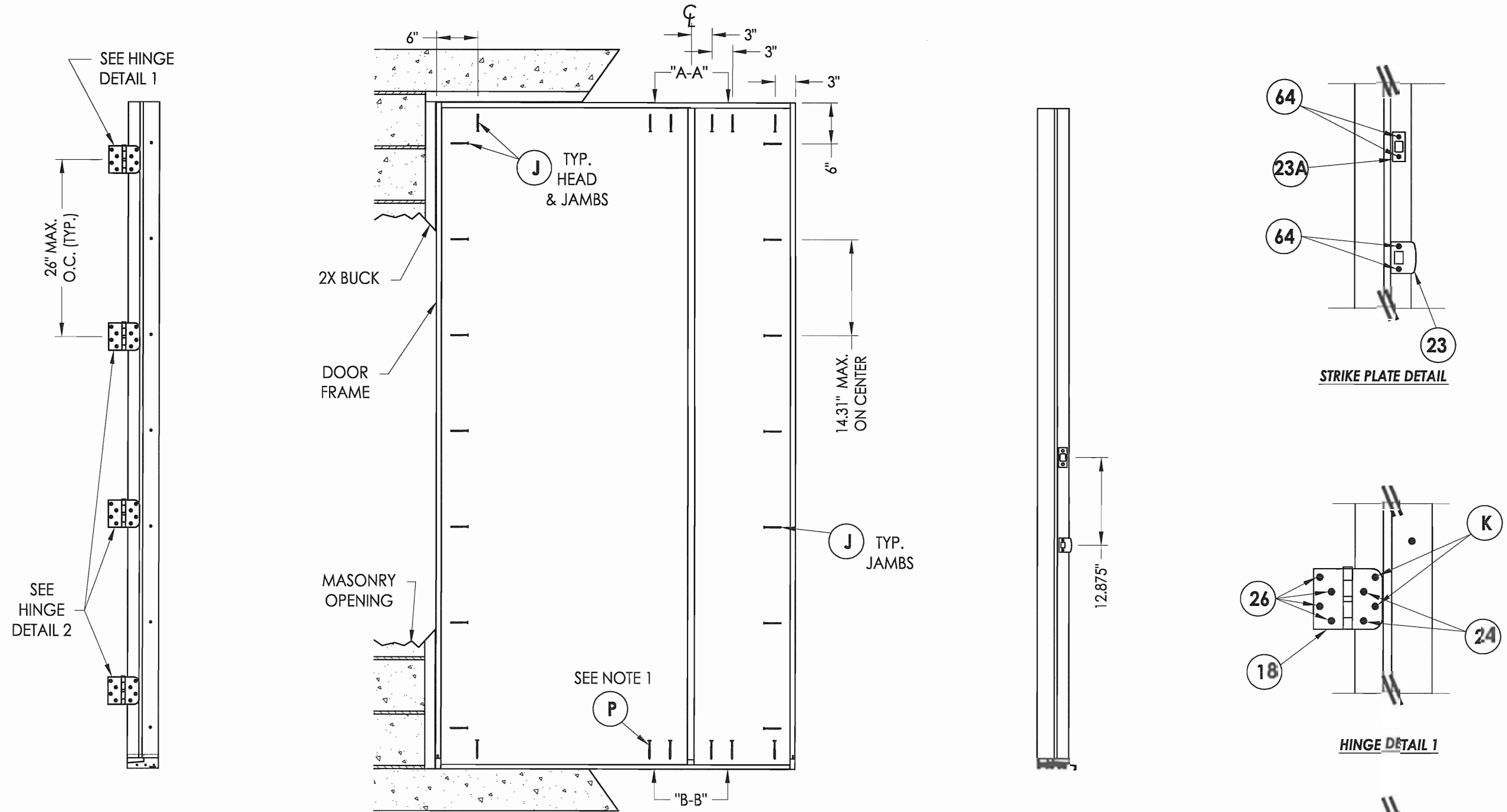
SHEET 6 OF 11



NOTES:

1. 1/4" Elco Concrete screws anchoring 2x buck require a minimum 1" clearance to masonry edges, a 1-1/4" minimum embedment and a minimum 4" clearance to adjacent concrete screws. Substitution of equal concrete screws from a different supplier may have different edge distance and center distance requirements. Concrete screw locations at the corners and at mullion centerlines may be adjusted to maintain the minimum edge distance to mortar joints. If Concrete screw locations noted as "MAX. ON CENTER" must be adjusted to maintain the minimum edge distance to mortar joints, additional Concrete screws may be required to ensure the maximum on center dimension is not exceeded.

Documents Prepared By: RW BUILDING CONSULTANTS, INC. P.O. Box 230 Valrico FL 33595 Phone No.: 813.659.9197 Florida Board of Professional Engineers Certificate of Authorization No. 9813 Lyndon F. Schmidt, P.E. No. 43409	
PRODUCT: TRINITY GLASS INT'L PREMIUM LIPLITE FIBERGLASS	PART OR ASSEMBLY: BUCK ANCHORING
	REVISIONS
	NO. DATE BY
DATE: 5/20/08	
SCALE: N.T.S.	
DWG. BY: YV	
CHK. BY: LFS	
DRAWING NO.: FL-11174.2	
SHEET 7 OF 11	



HINGE JAMB

FRAME ANCHORING
Masonry 2X buck construction

STRIKE MULLION

HINGE DETAIL 1

HINGE DETAIL 2

VIEW A-A
Head to mullion attachment

VIEW B-B
Sill to mullion attachment

NOTES:

- 1/4" ITW concrete screws anchoring frame and/or sill require a minimum 2-1/2" clearance to masonry edges, a 1-1/4" minimum embedment and a minimum 3" clearance to adjacent concrete screws. Substitution of equal concrete screws from a different supplier may have different edge distance and center distance requirements. Concrete screw locations at the corners and at mullion centerlines may be adjusted to maintain the minimum edge distance to mortar joints. If Concrete screw locations noted as "MAX. ON CENTER" must be adjusted to maintain the minimum edge distance to mortar joints, additional Concrete screws may be required to ensure the maximum on center dimension is not exceeded.

Documents Prepared By:

RW BUILDING CONSULTANTS, INC.
P.O. Box 230 Valrico FL 33595
Phone No.: 813.659.9197
Florida Board of Professional Engineers
Certificate Of Authorization No. 9813
LF 4.8.09
Lyndon F. Schmidt, P.E. No. 45409

PRODUCT: TRINITY GLASS INT'L PREMIUM LIPLITE FIBERGLASS

PART OR ASSEMBLY: FRAME ANCHORING 2X BUCK MASONRY CONSTRUCTION

NO.	DATE	BY	REVISIONS

DATE: 5/20/08

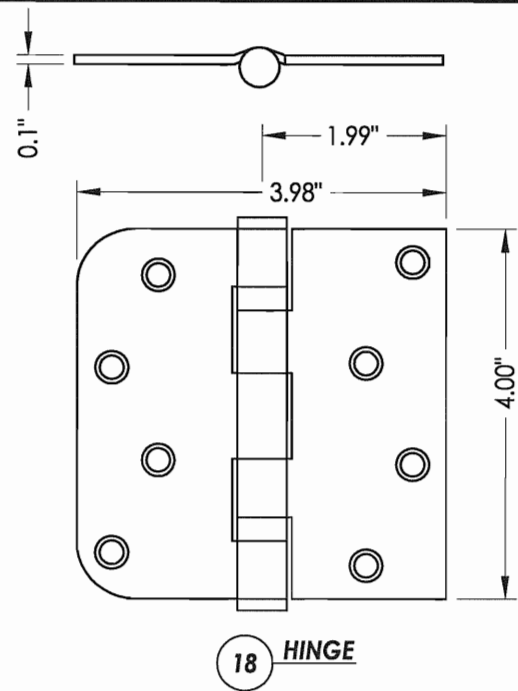
SCALE: N.T.S.

DWG. BY: YV

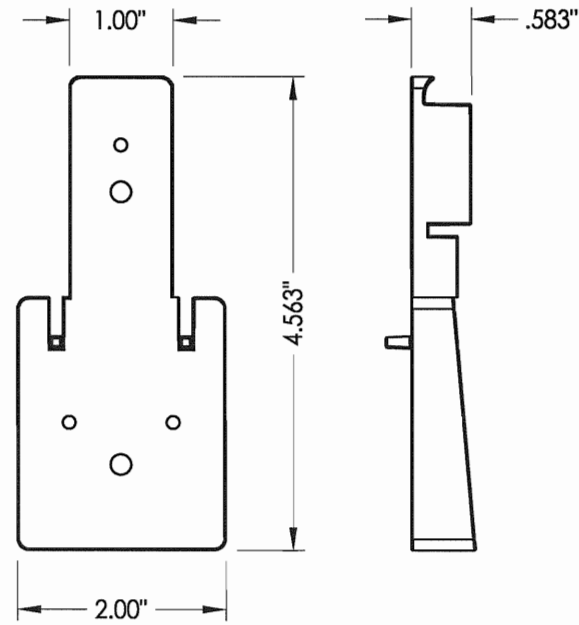
CHK. BY: LFS

DRAWING NO.: FL-11174.2

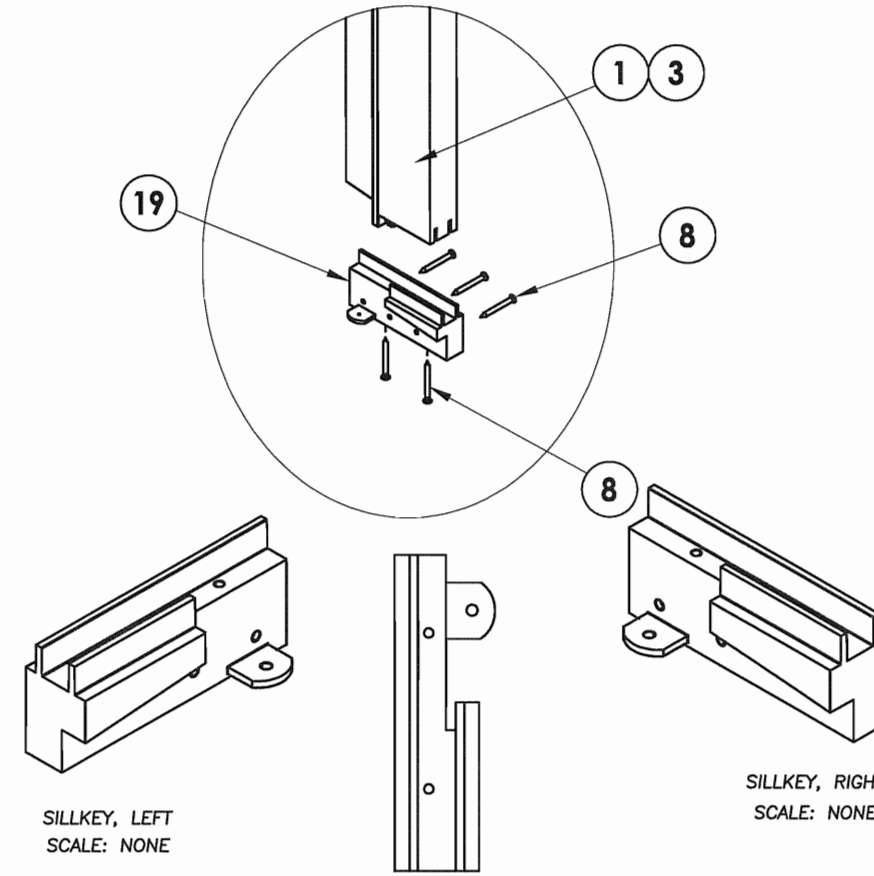
SHEET 8 OF 11



18 HINGE

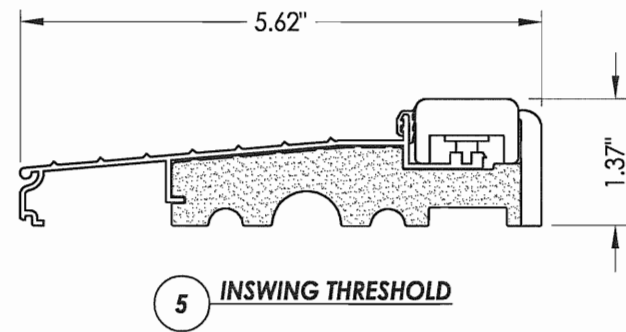


69 MULLION BASE KIT
Optional

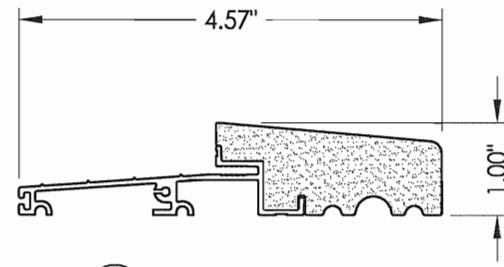


SILLKEY, LEFT
SCALE: NONE

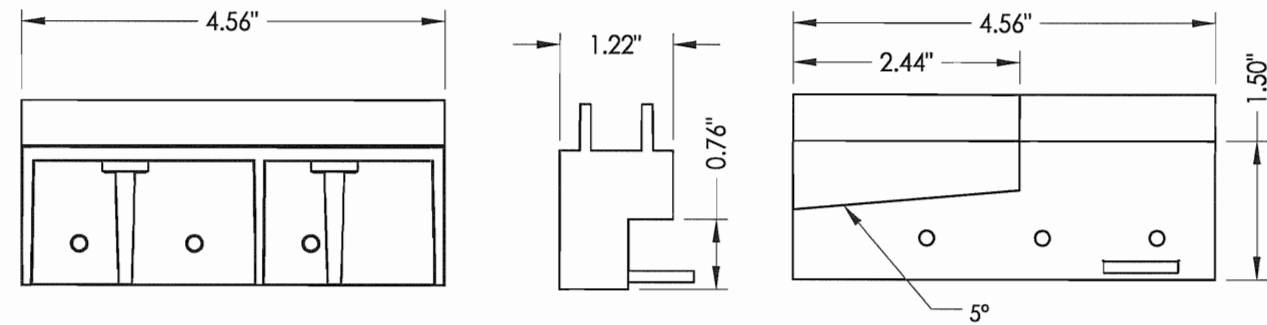
SILLKEY, RIGHT
SCALE: NONE



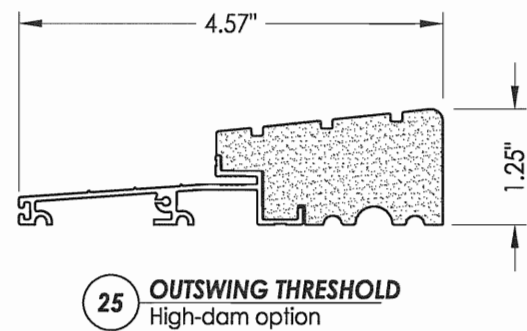
5 INSWING THRESHOLD



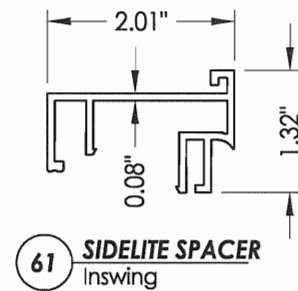
27 OUTSWING THRESHOLD



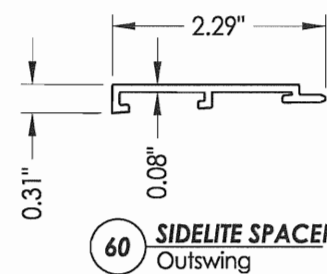
19 SILLKEY DETAILS
Optional



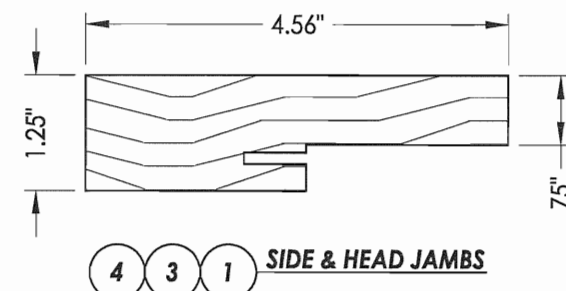
25 OUTSWING THRESHOLD
High-dam option



61 SIDELITE SPACER
Inswing



60 SIDELITE SPACER
Outswing



4 3 1 SIDE & HEAD JAMBS

PRODUCT:

TRINITY GLASS INT'L
PREMIUM LIPLITE FIBERGLASS

PART OR ASSEMBLY:

COMPONENTS

Documents Prepared By:

RW BUILDING CONSULTANTS, INC.
P.O. Box 230 Vairico FL 33595
Phone No.: 813.659.9197
Florida Board of Professional Engineers
Certificate of Authorization No. 9813
Lyndon F. Schmidt
Lyndon F. Schmidt, P.E. No. 43409

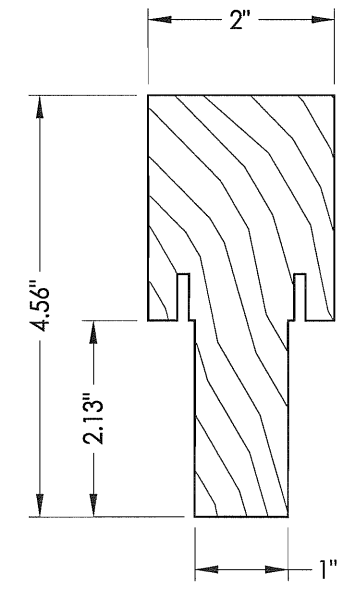
NO.	DATE	BY

REVISIONS

DATE: 5/20/08
SCALE: N.T.S.
DWG. BY: YV
CHK. BY: LFS
DRAWING NO.:
FL-11174.2
SHEET 10 OF 11

BILL OF MATERIALS		
ITEM	DESCRIPTION	MATERIAL
A	1X BUCK SG >= 0.55	WOOD
B	2X BUCK SG >= 0.55	WOOD
D	1/4" X 2-3/4" ELCO PFH CONCRETE SCREW	STEEL
E	MASONRY - 3,192 PSI MIN. CONCRETE CONFORMING TO ACI 301 OR HOLLOW BLOCK CONFORMING TO ASTM C90	CONCRETE
F	1/4" X 3-3/4" ITW PFH CONCRETE SCREW	STEEL
G	MAX. 1/4" SHIM SPACE	WOOD
H	1/4" X 3-1/4" ITW PFH CONCRETE SCREW	STEEL
J	#10 X 2-1/2" PFH WS	STEEL
K	#9 X 2" PFH WS	STEEL
P	1/4" X 2-3/4" ITW PFH CONCRETE SCREW	STEEL
1	SIDELITE JAMB - FINGER-JOINT PINE - SG >= 0.42	WOOD
3	HINGE JAMB - FINGER-JOINT PINE - SG >= 0.42	WOOD
4	HEAD - FINGER-JOINT PINE - SG >= 0.42	WOOD
5	INSWING THRESHOLD ALUMINUM W/ COMPOSITE SUBSTRATE	ALUMINUM
6	DOOR BOTTOM SWEEP	PVC
7	DOOR PANEL - SEE DOOR PANEL DETAIL SHEET FOR CONSTRUCTION DETAILS	-
8	#6 X 1-1/4" PFH DRYWALL SCREW	STEEL
9	#9 X 2-1/4" PFH WOOD SCREW	STEEL
12	WEATHER STRIP QEBD650 Q-LON	-
18	3.983" X 4" HINGE MIN 0.098" THICK	STEEL
19	SILLKEY	PC/ASA
21	KWIKSET LOCK -SERIES 200 PASSAGE	STEEL
22	KWIKSET DEADBOLT -SERIES 600	STEEL
23	STRIKE PLATE	STEEL
23A	DEADBOLT PLATE	STEEL
24	#9 X 5/8" PFH SCREW	STEEL
25	OUTSWING HIGH-DAM THRESHOLD ALUMINUM W/ COMPOSITE SUBSTRATE	ALUM./ COMP.
26	#9 X 1" PFH SCREW	STEEL
27	OUTSWING THRESHOLD ALUMINUM W/ COMPOSITE SUBSTRATE	ALUM./ COMP.
30	LATCH STILE - SG >= 0.42	LVL/PVC
31	LVL LOCK BLOCK	POPLAR
32	HINGE STILE - SG >= 0.42	LVL/PVC
33	TOP RAIL - POPLAR LVL & WPC COMBINATION	POPLAR/WPC
34	BOTTOM RAIL - POPLAR LVL & WPC COMBINATION	POPLAR/WPC

BILL OF MATERIALS		
ITEM	DESCRIPTION	MATERIAL
39	FIBERGLASS SKIN 0.079" MIN. THICKNESS (Fy = 5,203 PSI MIN.)	FIBERGLASS
40	#8 X 1-1/8" SELF THREADING SCREW	STEEL
42	ALUMINUM & BUTYL SPACER SYSTEM	ALUM./BUTYL
44	HOT MELT SEALANT / SILICONE	-
45	LITE FRAME	PC/ASA
46	INSULATING FOAM CORE	POLYURETHANE
60	SIDELITE SPACER - OUTSWING	PVC
61	SIDELITE SPACER - INSWING	PVC
62	QUARTER ROUND	WOOD
63	#8 X 2-1/4" PFH SCREW	STEEL
64	#8 X 2" PFH SCREW	STEEL
66	SIDELITE PANEL - SEE SIDELITE PANEL DETAIL SHEET FOR CONSTRUCTION DETAILS	-
67	INTEGRAL MULLION - FINGER JOINT PINE (SG >= 0.42)	WOOD
69	MULLION BASE KIT	PC/ASA
73	LVL SIDELITE TOP RAIL	POPLAR
74	LVL SIDELITE BOTTOM RAIL	POPLAR
75	LVL SIDELITE STILE	POPLAR



67 INTEGRAL MULLION

Documents Prepared By: **RW** BUILDING CONSULTANTS, INC.
P.O. Box 230 Valrico FL, 33595
Phone No.: 813.659.9197

Florida Board of Professional Engineers
Certificate Of Authorization No. 9813
Lyndon F. Schmidt, P.E. No. 43409

PRODUCT: TRINITY GLASS INT'L PREMIUM LIPLITE FIBERGLASS
PART OR ASSEMBLY: BILL OF MATERIALS

NO.	DATE	BY	REVISIONS

DATE: 5/20/08
SCALE: N.T.S.
DWG. BY: YV
CHK. BY: LFS
DRAWING NO.: FL-11174.2
SHEET 11 OF 11

© 2008 R.W. BUILDING CONSULTANTS INC.