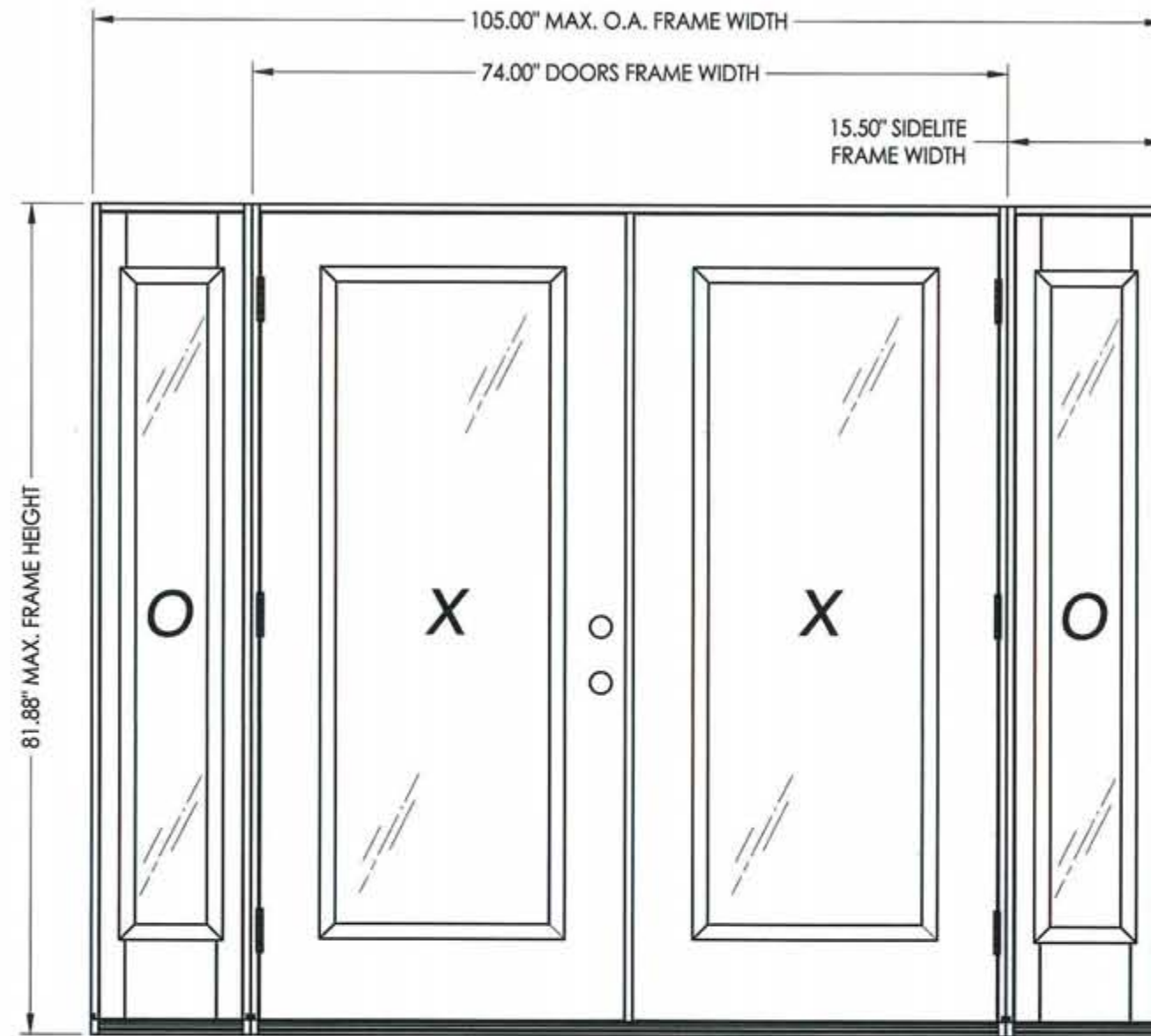


**PREMIUM LIPLITE
FIBERGLASS DOOR
IN SWING / OUT SWING
"NON-IMPACT"**

GENERAL NOTES

1. This product has been evaluated and is in compliance with the 2007 Florida Building Code (FBC) structural requirements including the "High Velocity Hurricane Zone" (HVHZ).
2. Product anchors shall be as listed and spaced as shown on details. Anchor embedment to base material shall be beyond wall dressing or stucco.
3. When used in the "HVHZ" this product is required to be protected with an impact resistant covering that complies with Section 1626 of the 2007 FBC.
4. When used in areas outside of the "HVHZ" requiring wind borne debris protection this product is required to be protected with an impact resistant covering that complies with Section 1609.1.2 of the FBC.
5. For 2x stud framing construction, anchoring of these units shall be the same as that shown for 2x buck masonry construction.
6. Site conditions that deviate from the details of this drawing require further engineering analysis by a licensed engineer or registered architect.
7. Outswing configuration using threshold item #25 meet water infiltration requirements for "HVHZ".
8. Inswing configurations and outswing configuration using threshold item #27 do not meet the water infiltration requirements for the "HVHZ" and shall be installed only in non-habitable areas or at habitable locations protected by an overhang or canopy such that the angle between the edge of canopy or overhang to sill is less than 45 degrees.



DOUBLE with BOXED SIDELITES

TABLE OF CONTENTS	
SHEET #	DESCRIPTION
1	Typical elevations, design pressures & general notes
2	Door panel construction details & glazing details
3	Sidelite panel construction details & glazing details
4	Horizontal cross sections
5	Vertical cross sections
6	Vertical cross sections
7	Buck anchoring
8	Frame anchoring - 2X buck masonry construction
9	Frame anchoring - 1X buck masonry construction
10	Components
11	Endura astragal details
12	Trinity astragal details
13	PVC astragal details
14	Bill of materials

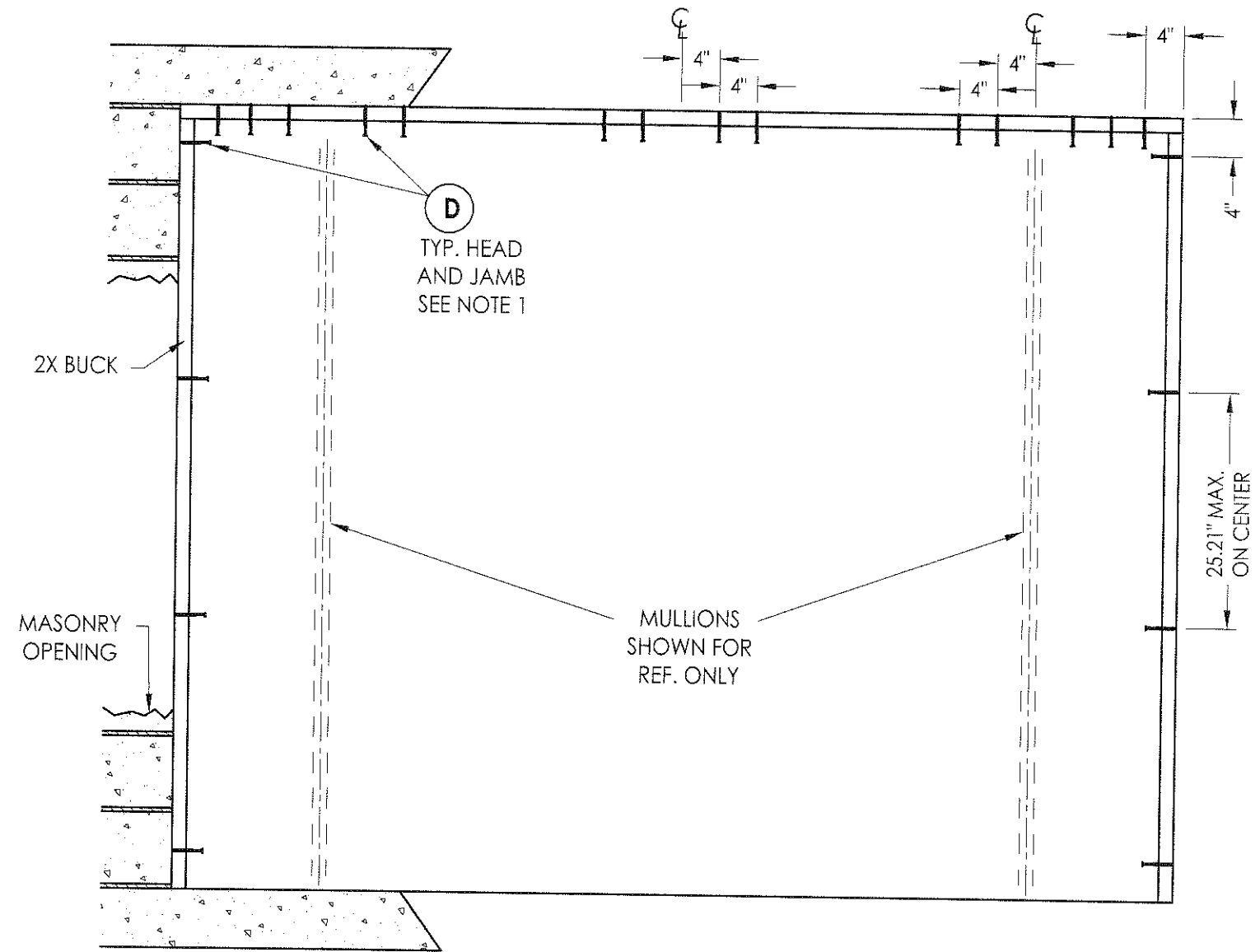
ASTRAGAL TYPE	SWING	MAX. FRAME DIMENSION	GLASS TYPE	DESIGN PRESSURE (PSF)	
				POSITIVE	NEGATIVE
ENDURA	IN SWING	105.00" x 81.88"	G1	+47.0	-47.0
	OUT SWING	105.00" x 80.75"		+47.0	-47.0
TRC	IN SWING	105.00" x 81.88"	G1	+47.0	-47.0
	OUT SWING	105.00" x 80.75"		+47.0	-47.0
PVC	IN SWING	105.00" x 81.88"	G1	+43.0	-47.0
	OUT SWING	105.00" x 80.75"		+43.0	-43.0

Documents Prepared By:
RW BUILDING CONSULTANTS, INC.
 P.O. Box 230 Valrico FL 33595
 Phone No.: 813.659.9197
 Florida Board of Professional Engineers
 Certificate Of Authorization No. 9813
Wendell W. Honey, P.E. B-1-08
 No. 54158

PRODUCT:
 TRINITY GLASS INT'L
 PREMIUM LIPLITE FIBERGLASS
 PART OR ASSEMBLY:
 TYPICAL ELEVATION, DESIGN
 PRESSURES & GENERAL NOTES

NO.	DATE	BY	REVISIONS

DATE: 5/09/08
 SCALE: N.T.S.
 DWG. BY: YV
 CHK. BY: WWH
 DRAWING NO.: FL-11165.7
 SHEET 1 OF 14



BUCK ANCHORING

NOTES:

1. 1/4" Elco Concrete screws anchoring 2x buck require a minimum 1" clearance to masonry edges, a 1-1/4" minimum embedment and a minimum 4" clearance to adjacent concrete screws. Substitution of equal concrete screws from a different supplier may have different edge distance and center distance requirements. Concrete screw locations at the corners, mullion and astragal may be adjusted to maintain the minimum edge distance to mortar joints. If concrete screw locations noted as "MAX. ON CENTER" must be adjusted to maintain the minimum edge distance to mortar joints, additional concrete screws may be required to ensure the maximum on center dimension is not exceeded.

Documents Prepared By:
RW BUILDING CONSULTANTS, INC.
 P.O. Box 230 Valrico FL, 33595
 Phone No.: 813.659.9197
 Florida Board of Professional Engineers
 Certificate Of Authorization No. 9813
Wendell W. Hines
 Wendell W. Hines, P.E. No. 54158

PRODUCT: TRINITY GLASS INT'L PREMIUM LIPLITE FIBERGLASS
 PART OR ASSEMBLY: BUCK ANCHORING

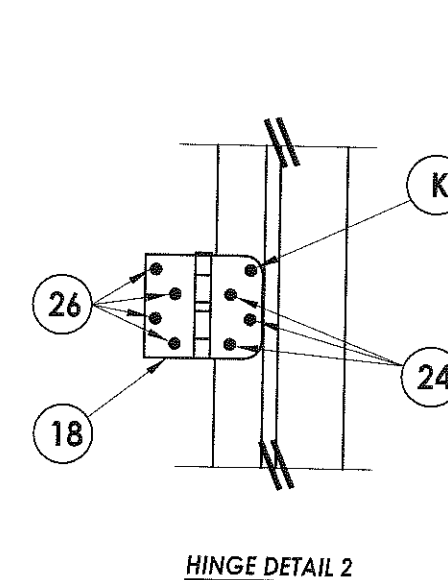
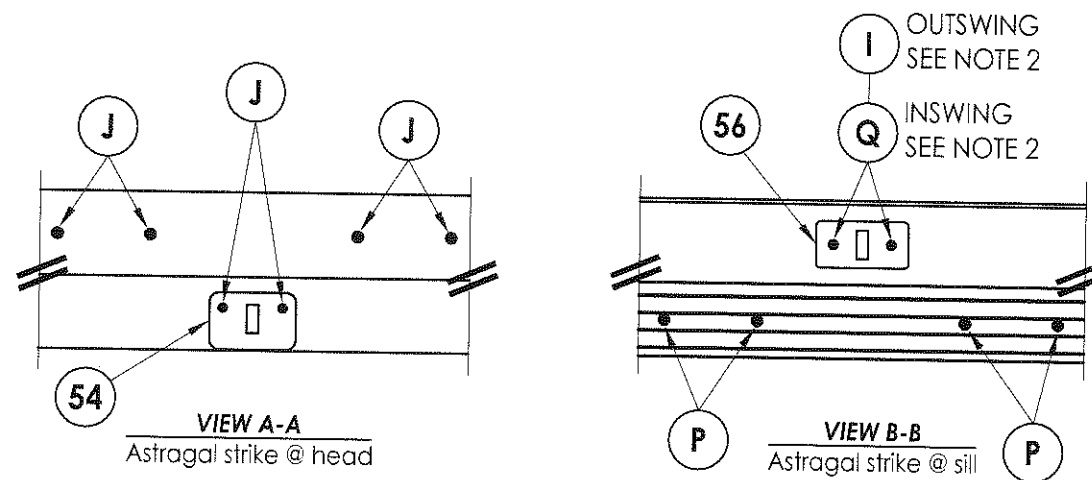
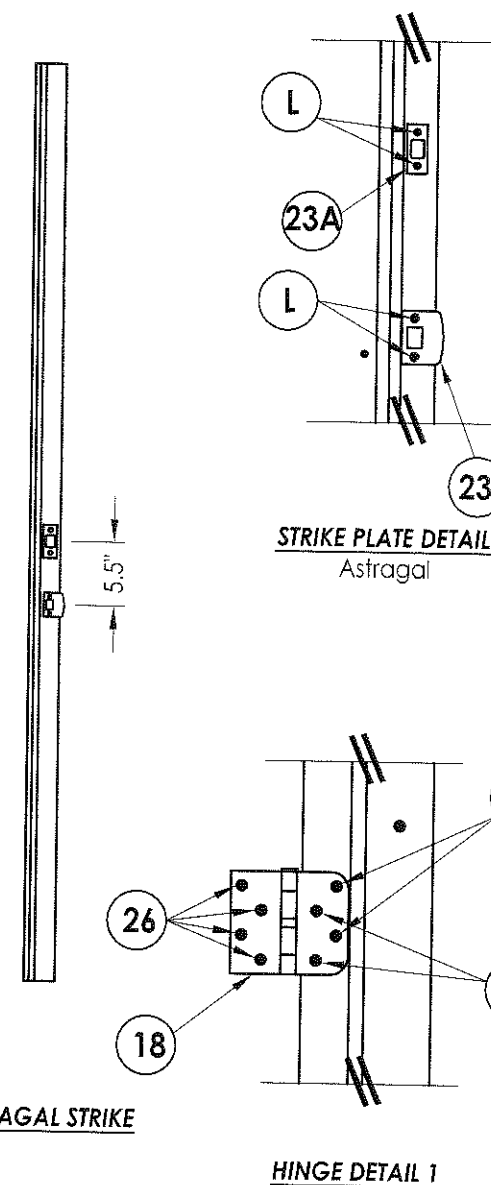
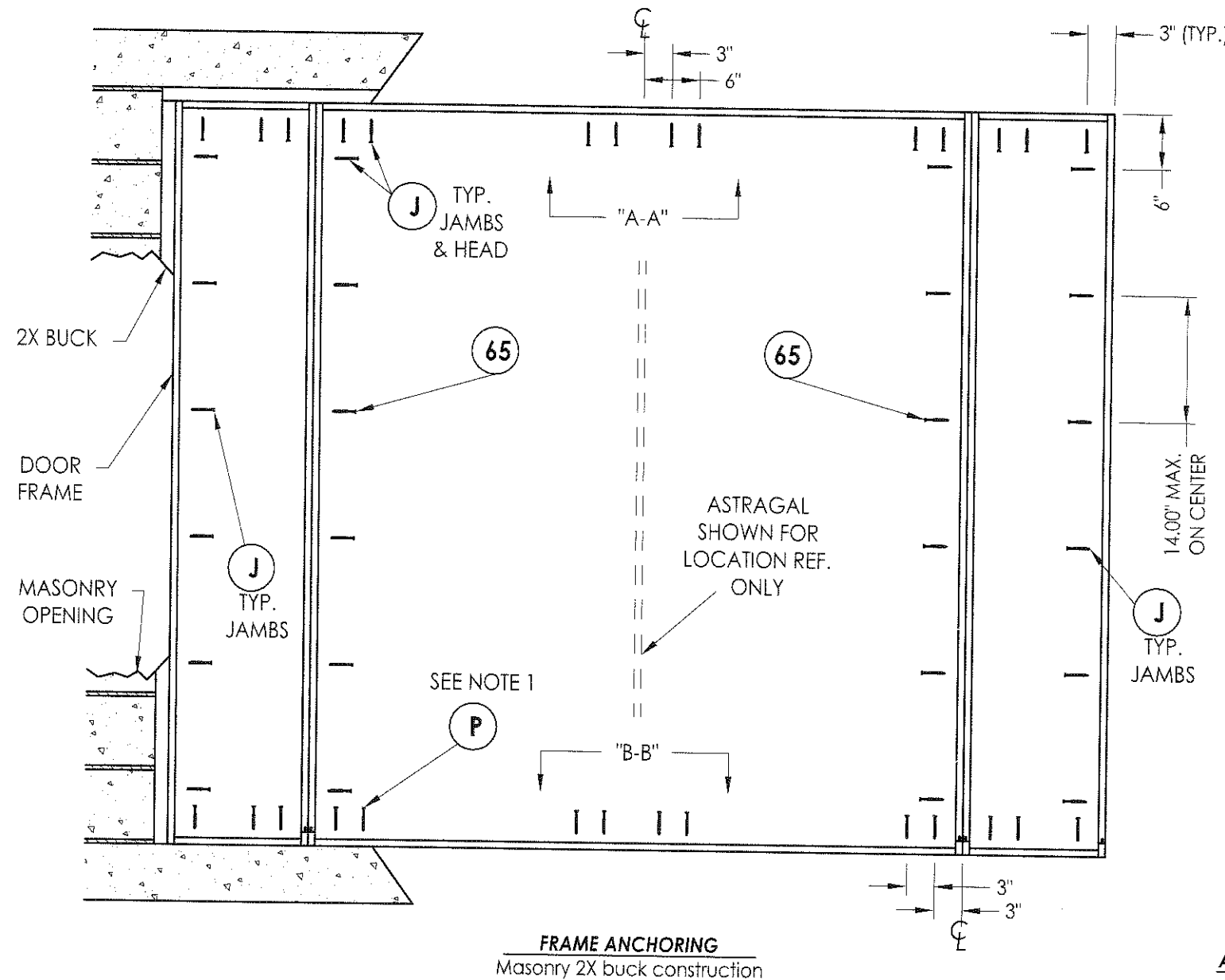
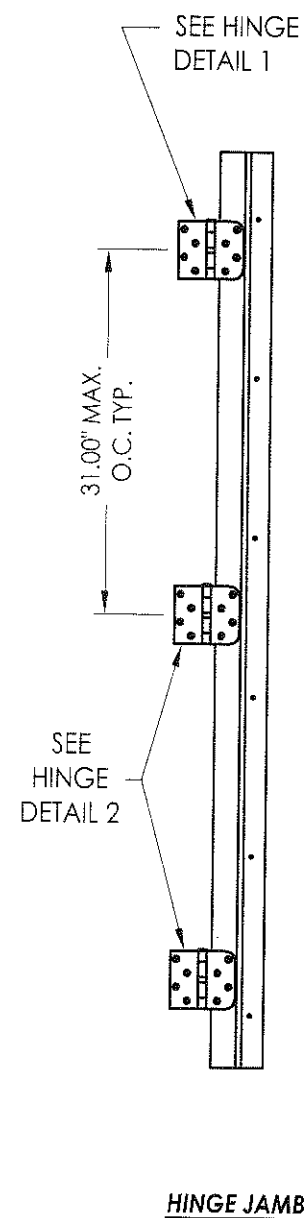
NO.	DATE	BY

REVISIONS

DATE: 5/09/08
 SCALE: N.T.S.
 DWG. BY: YV
 CHK. BY: WWH
 DRAWING NO.: FL-11165.7
 SHEET 7 of 14

© 2008 R.W. BUILDING CONSULTANTS INC.

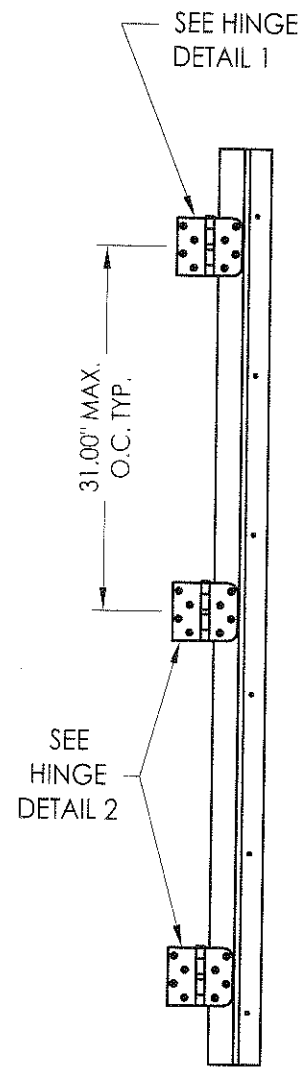
N:\Projects\11165\11165.dwg, Model
 1101 - 1200\PT1122\U. RWBC Drawings\FL-11165\FL-11165.1-7.dwg, Model



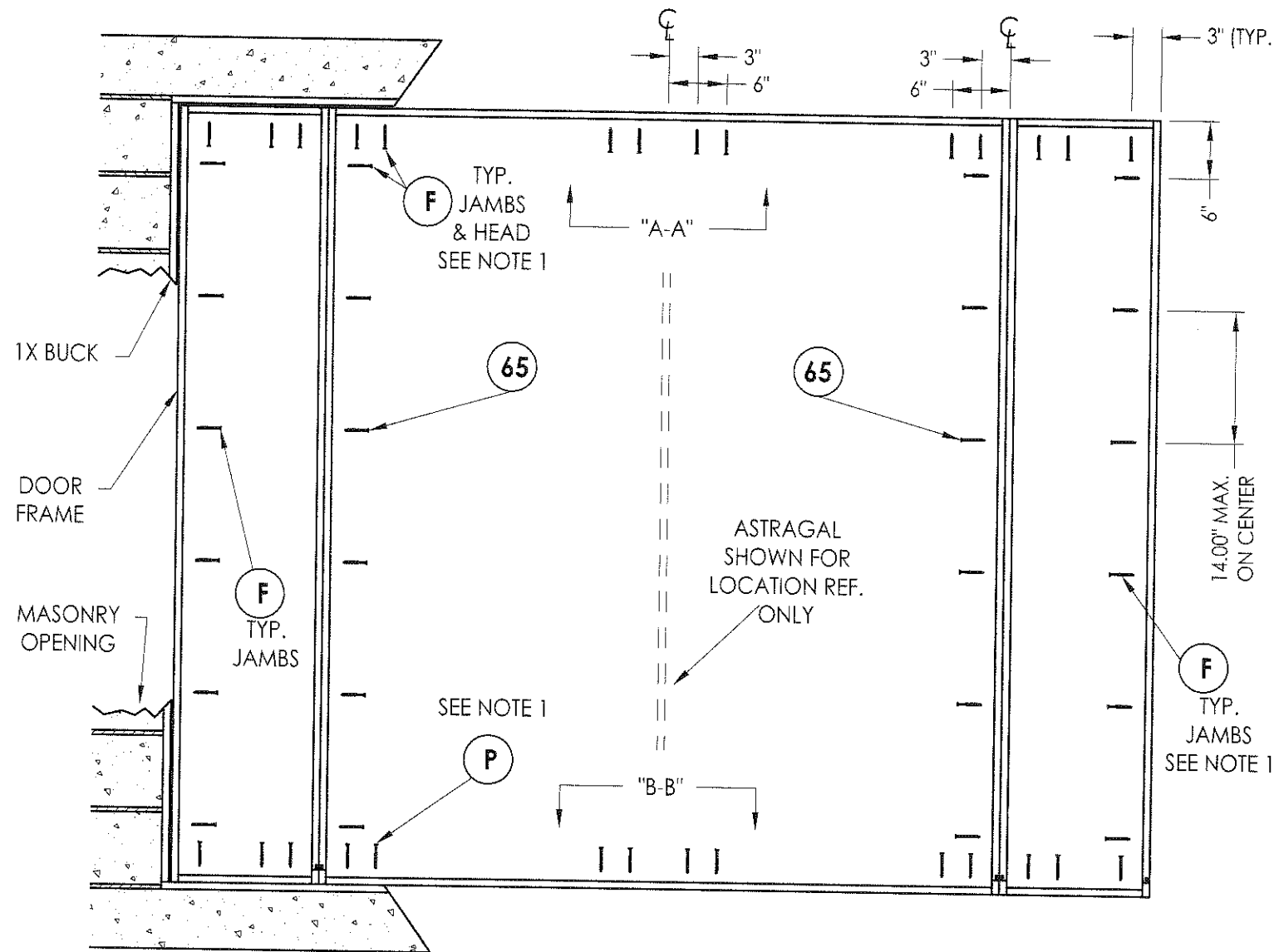
NOTES:

- 1/4" ITW concrete screws anchoring frame and/or sill require a minimum 2-1/2" clearance to masonry edges, a 1-1/4" minimum embedment and a minimum 3" clearance to adjacent concrete screws. Substitution of equal concrete screws from a different supplier may have different edge distance and center distance requirements. Concrete screw locations at the corners, at mullions and at astragal locations may be adjusted to maintain the minimum edge distance to mortar joints. If concrete screw locations noted as "MAX. ON CENTER" must be adjusted to maintain the minimum edge distance to mortar joints, additional concrete screws may be required to ensure the maximum on center dimension is not exceeded.
- 3/16" ITW concrete screws anchoring frame and/or sill require a minimum 2-5/8" clearance to masonry edges, a 1-1/4" minimum embedment and a minimum 2-1/4" clearance to adjacent concrete screws unless otherwise noted by concrete screw manufacturer.

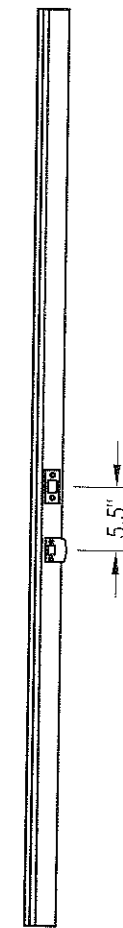
Documents Prepared By: RW BUILDING CONSULTANTS, INC. P.O. Box 230 Vairico FL 33595 Phone No.: 813.659.9197 Florida Board of Professional Engineers Certificate Of Authorization No. 9813 <i>Wendell W. Barney</i> 8-1-08 Wendell W. Barney, P.E. No. 54158																																									
PRODUCT: TRINITY GLASS INT'L PREMIUM LIPLITE FIBERGLASS	PART OR ASSEMBLY: FRAME ANCHORING 2X BUCK MASONRY CONSTRUCTION																																								
REVISIONS <table border="1" style="width: 100%; border-collapse: collapse;"> <thead> <tr> <th style="width: 10%;">NO.</th> <th style="width: 10%;">DATE</th> <th style="width: 10%;">BY</th> <th style="width: 10%;">REVISIONS</th> </tr> </thead> <tbody> <tr> <td> </td> <td> </td> <td> </td> <td> </td> </tr> <tr> <td> </td> <td> </td> <td> </td> <td> </td> </tr> <tr> <td> </td> <td> </td> <td> </td> <td> </td> </tr> <tr> <td> </td> <td> </td> <td> </td> <td> </td> </tr> <tr> <td> </td> <td> </td> <td> </td> <td> </td> </tr> <tr> <td> </td> <td> </td> <td> </td> <td> </td> </tr> <tr> <td> </td> <td> </td> <td> </td> <td> </td> </tr> <tr> <td> </td> <td> </td> <td> </td> <td> </td> </tr> <tr> <td> </td> <td> </td> <td> </td> <td> </td> </tr> </tbody> </table>	NO.	DATE	BY	REVISIONS																																					DATE: 5/09/08 SCALE: N.T.S. DWG. BY: YV CHK. BY: WWH DRAWING NO.: FL-11165.7 SHEET 8 OF 14
NO.	DATE	BY	REVISIONS																																						



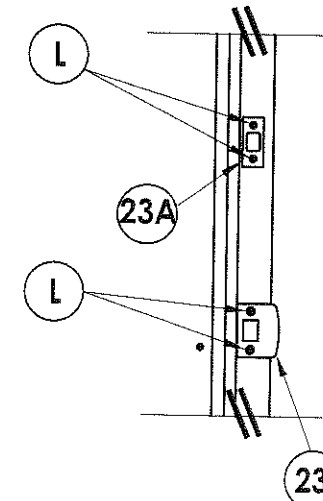
HINGE JAMB



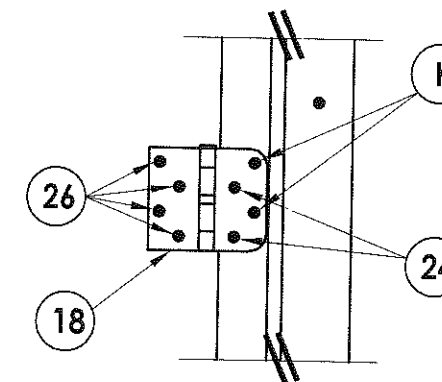
FRAME ANCHORING
Masonry 2X buck construction



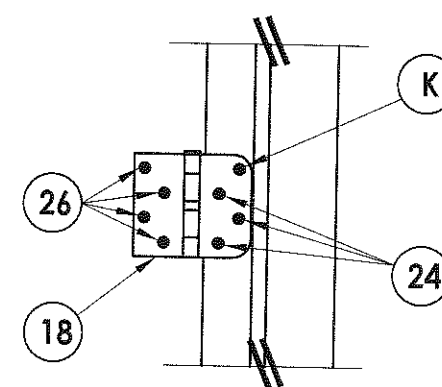
ASTRAGAL STRIKE



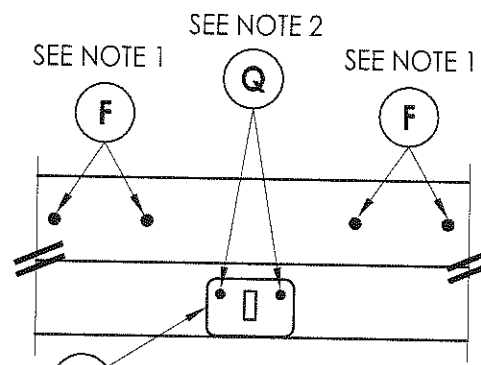
STRIKE PLATE DETAIL
Astragal



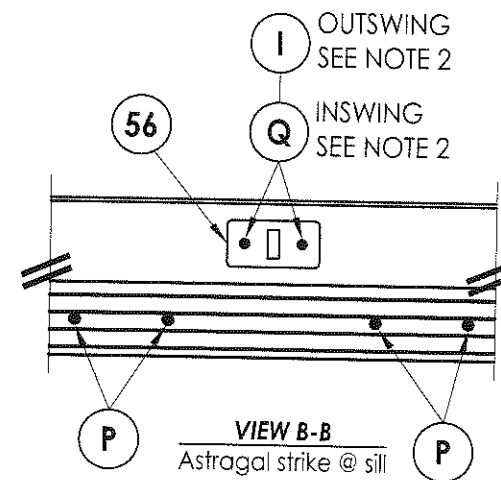
HINGE DETAIL 1



HINGE DETAIL 2



VIEW A-A
Astragal strike @ head



VIEW B-B
Astragal strike @ sill

NOTES:

- 1/4" ITW concrete screws anchoring frame and/or sill require a minimum 2-1/2" clearance to masonry edges, a 1-1/4" minimum embedment and a minimum 3" clearance to adjacent concrete screws. Substitution of equal concrete screws from a different supplier may have different edge distance and center distance requirements. Concrete screw locations at the corners, at mullions and at astragal locations may be adjusted to maintain the minimum edge distance to mortar joints. If concrete screw locations noted as "MAX. ON CENTER" must be adjusted to maintain the minimum edge distance to mortar joints, additional concrete screws may be required to ensure the maximum on center dimension is not exceeded.
- 3/16" ITW concrete screws anchoring frame and/or sill require a minimum 2-5/8" clearance to masonry edges, a 1-1/4" minimum embedment and a minimum 2-1/4" clearance to adjacent concrete screws unless otherwise noted by concrete screw manufacturer.

Documents Prepared By:

RW BUILDING CONSULTANTS, INC.
P.O. Box 230 Vairico FL, 33595
Phone No.: 813.659.9197
Florida Board of Professional Engineers
Certificate of Authorization No. 9813

Wendell W. Hangul
Wendell W. Hangul P.E. No. 54158

PRODUCT:
TRINITY GLASS INT'L
PREMIUM LIPLITE FIBERGLASS

PART OR ASSEMBLY:
FRAME ANCHORING
1X BUCK MASONRY CONSTRUCTION

NO.	DATE	BY	REVISIONS

DATE: 5/09/08

SCALE: N.T.S.

DWG. BY: YV

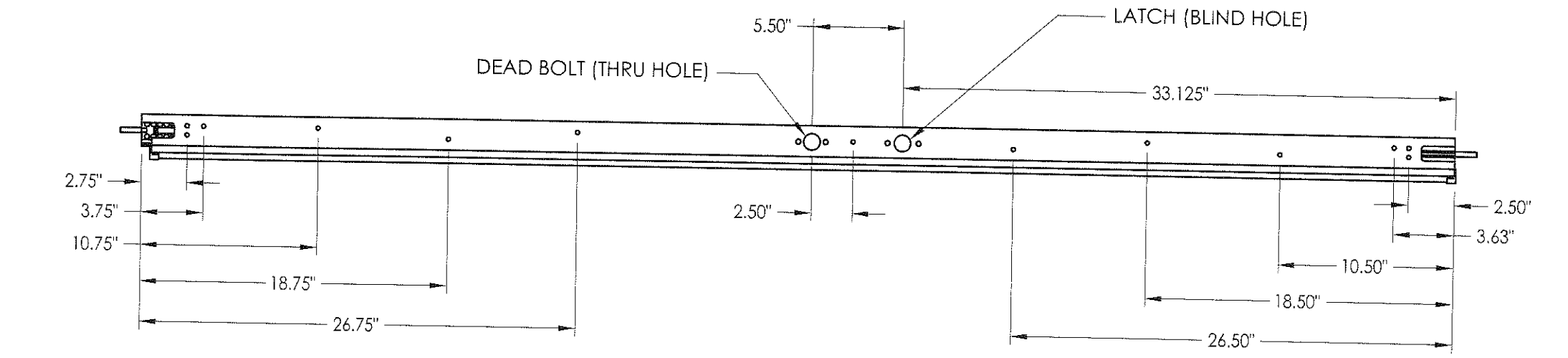
CHK. BY: WWH

DRAWING NO.:

FL-11165.7

SHEET 9 OF 14

C:\Users\jg\Documents\Projects\1101 - 1200\111124\1101 - 1200\Drawings\FL-11165\FL-11165.1-7.dwg, Model

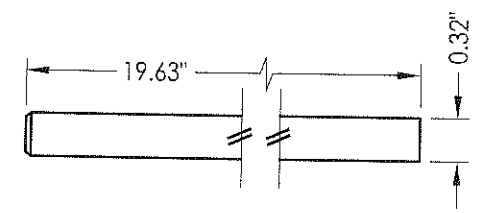


TOP

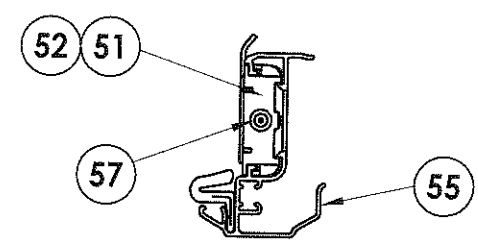
BOTTOM

A-A

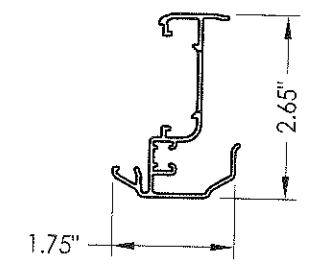
6'8 ALUMINUM ASTRAGAL ASSEMBLY
By Endura Product



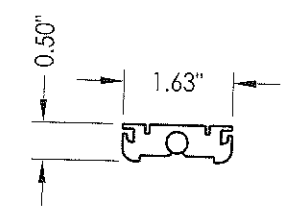
57 SLIDE BOLT ROD
MATL: Steel



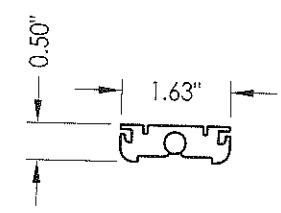
VIEW A-A
Aluminum Astragal Assembly



55 ALUMINUM ASTRAGAL
By Endura Product



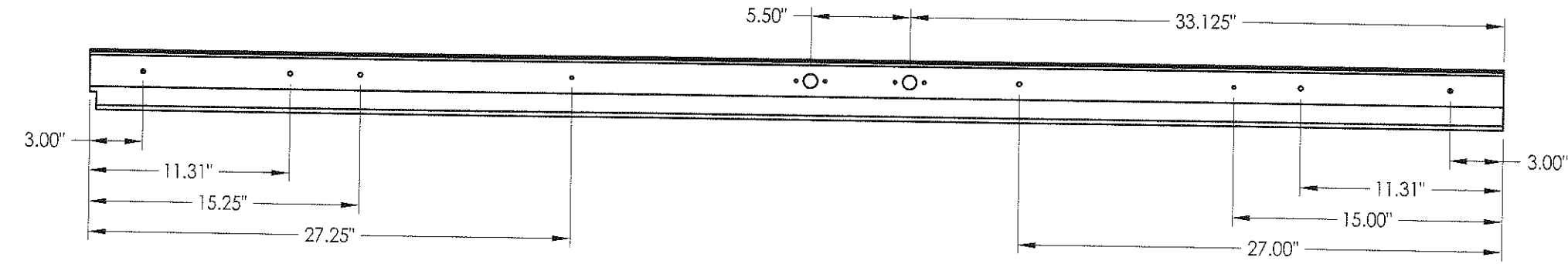
52 TOP BOLT RETAINER
MATL: 9-3/4" Long Aluminum



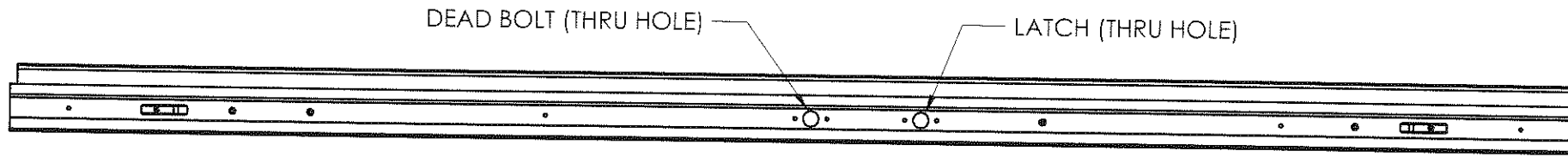
51 TOP BOLT RETAINER
MATL: 4-3/4" Long HDPE

Documents Prepared By: RW BUILDING CONSULTANTS, INC. P.O. Box 230 Valrico FL, 33595 Phone No.: 813.659.9197 Florida Board of Professional Engineers Certificate Of Authorization No. 9813 <i>Wendell W. Henney</i> B-1-08 Wendell W. Henney, P.E. No. 54158	
PRODUCT: TRINITY GLASS INT'L PREMIUM LIPLITE FIBERGLASS PART OR ASSEMBLY: ENDURA ASTRAGAL DETAILS	
	REVISIONS NO. DATE BY
DATE: 5/09/08 SCALE: N.T.S. DWG. BY: YV CHK. BY: WWH DRAWING NO.: FL-11165.7 SHEET 11 OF 14	

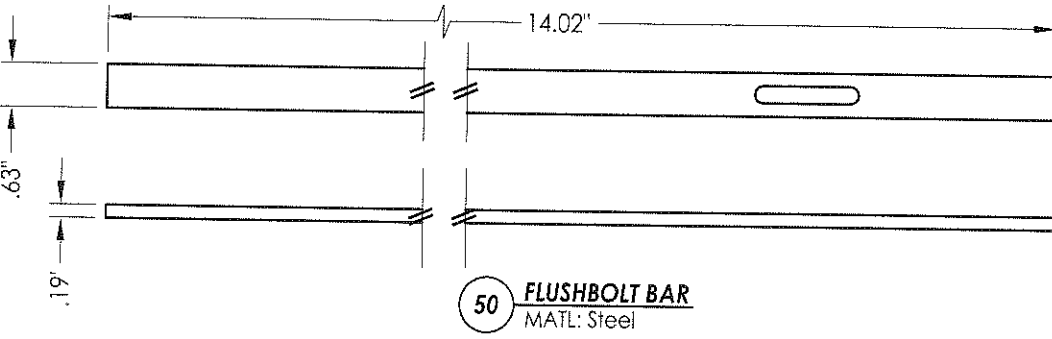
TOP



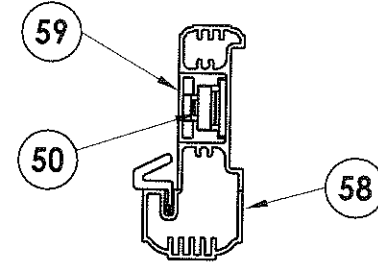
BOTTOM



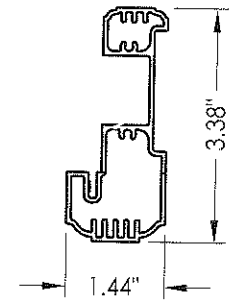
6'8 ALUMINUM ASTRAGAL ASSEMBLY
By TRC



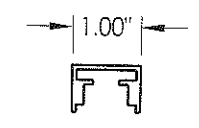
50 FLUSHBOLT BAR
MATL: Steel



VIEW B-B
Aluminum Astragal Assembly



58 ALUMINUM ASTRAGAL
BY TRC



59 ASTRAGAL CHANNEL
BY TRC

Documents Prepared By:
RW BUILDING CONSULTANTS, INC.
 P.O. Box 230 Valrico FL 33595
 Phone No.: 813.659.9197
 Florida Board of Professional Engineers
 Certificate Of Authorization No. 9813
Wendell W. Haggerty B-1-08
 Wendell W. Haggerty, P.E. No. 54158

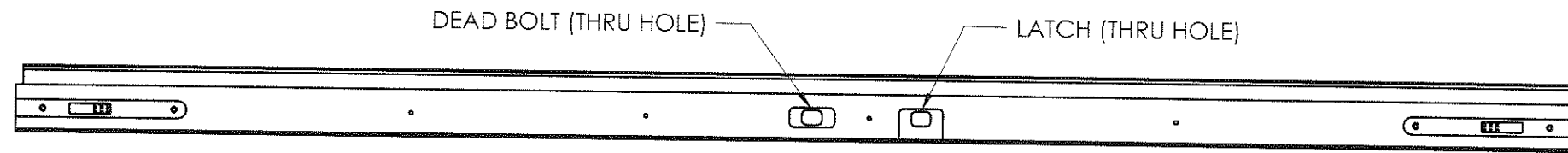
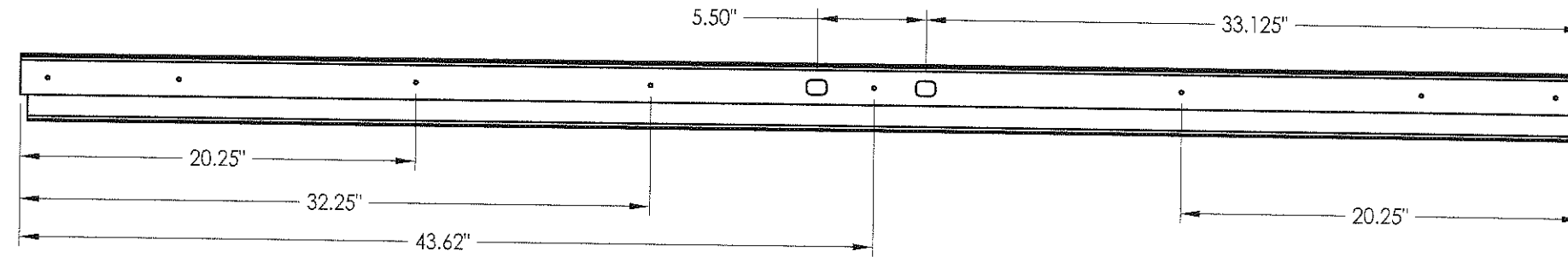
PRODUCT:
 TRINITY GLASS INT'L
 PREMIUM LIPLITE FIBERGLASS
 PART OR ASSEMBLY:
 TRINITY ASTRAGAL DETAILS

NO.	DATE	BY	REVISIONS

DATE: 5/09/08
 SCALE: N.T.S.
 DWG. BY: YV
 CHK. BY: WWH
 DRAWING NO.: FL-11165.7
 SHEET 12 OF 14

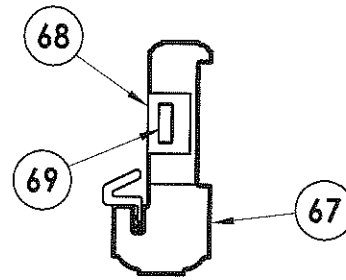
TOP

BOTTOM

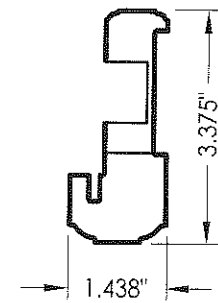


6'8 PVC ASTRAGAL ASSEMBLY
By TRC

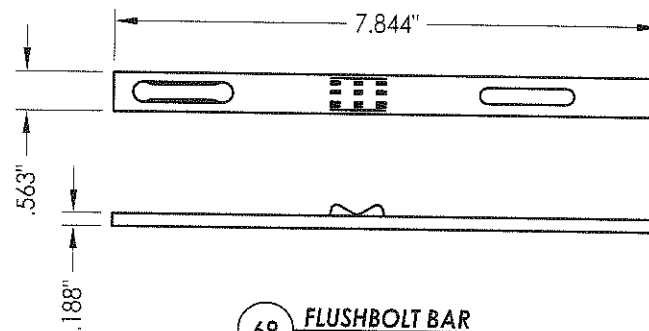
C-C



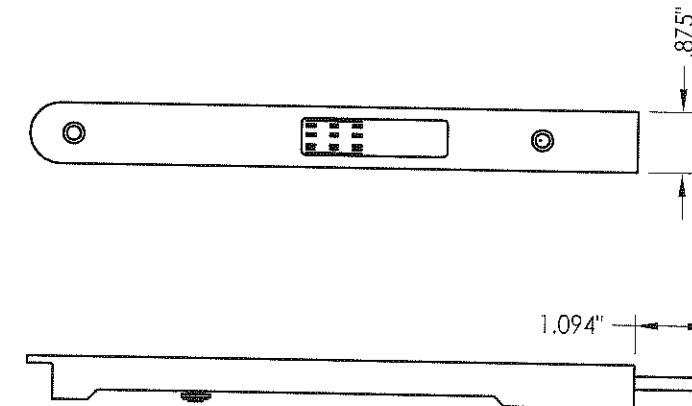
VIEW C-C
PVC ASTRAGAL ASSEMBLY



67 PVC ASTRAGAL
BY TRC



69 FLUSHBOLT BAR
MATL: DIE CAST ZINC



68 FLUSHBOLT
MATL: 8.75" DIE CAST ZINC

Documents Prepared By: RW BUILDING CONSULTANTS, INC. P.O. Box 230 Valrico FL 33595 Phone No.: 813.659.9197 Florida Board of Professional Engineers Certificate Of Authorization No. 9813 <i>Wendell W. Haney</i> P.E. No. 54158	
PRODUCT: TRINITY GLASS INT'L PREMIUM LIPLITE FIBERGLASS	PART OR ASSEMBLY: PVC ASTRAGAL DETAILS
NO.	DATE
BY	REVISIONS
DATE: 5/09/08	
SCALE: N.T.S.	
DWG. BY: YV	
CHK. BY: WWH	
DRAWING NO.: FL-11165.7	
SHEET 13 OF 14	

BILL OF MATERIALS			BILL OF MATERIALS		
ITEM	DESCRIPTION	MATERIAL	ITEM	DESCRIPTION	MATERIAL
A	1X BUCK SG >= 0.55	WOOD	39	FIBERGLASS SKIN 0.079" MIN. THICKNESS (Fy = 5,203 PSI MIN.)	FIBERGLASS
B	2X BUCK SG >= 0.55	WOOD	40	#8 X 1-1/8" SELF THREADING SCREW	STEEL
D	1/4" X 2-3/4" ELCO PFH CONCRETE SCREW	STEEL	42	ALUMINUM & BUTYL SPACER SYSTEM	ALUM./BUTYL
E	MASONRY - 3,192 PSI MIN. CONCRETE CONFORMING TO ACI 301 OR HOLLOW BLOCK CONFORMING TO ASTM C90	CONCRETE	44	HOT MELT SEALANT / SILICONE	-
F	1/4" X 3-3/4" ITW PFH CONCRETE SCREW	STEEL	45	LITE FRAME	PC/ASA
G	MAX. 1/4" SHIM SPACE	WOOD	46	FOAM CORE	POLYURETHANE
I	3/16" X 1-3/4" ITW PFH CONCRETE SCREW	STEEL	50	FLUSHBOLT BAR	STEEL
J	#10 X 2-1/2" PFH WS	STEEL	51	4-3/4" LENGTH TOP BOLT RETAINER	HDPE
K	#9 X 2" PFH WS	STEEL	52	9-3/4" LENGTH TOP BOLT RETAINER	ALUMINUM
L	#8 X 2-1/2" PFH WS	STEEL	53	#8 X 1-3/4" FPH SMS	STEEL
P	1/4" X 2-3/4" ITW PFH CONCRETE SCREW	STEEL	54	ASTRAGAL STRIKE @ HEAD	STEEL
Q	3/16" X 3-1/4" ITW CONCRETE SCREW	STEEL	55	ASTRAGAL BY ENDURA PRODUCT	ALUMINUM
1	SIDELITE JAMB - FINGER-JOINT PINE - SG >= 0.42	STEEL	56	ASTRAGAL STRIKE @ SILL	STEEL
3	HINGE JAMB - FINGER-JOINT PINE - SG >= 0.42	WOOD	57	SLIDE BOLT ROD	STEEL
4	HEAD - FINGER-JOINT PINE - SG >= 0.42	WOOD	58	ASTRAGAL BY TRC	ALUMINUM
5	INSWING THRESHOLD ALUMINUM W/ COMPOSITE SUBSTRATE	WOOD	59	ASTRAGAL CHANNEL BY TRC	ALUMINUM
6	DOOR BOTTOM SWEEP	ALUMINUM	60	SIDELITE SPACER - OUTSWING	PVC
7	DOOR PANEL - SEE DOOR PANEL DETAIL SHEET FOR CONSTRUCTION DETAILS	PVC	61	SIDELITE SPACER - INSWING	PVC
8	#6 X 1-1/4" PFH DRYWALL SCREW	-	62	QUARTER ROUND	WOOD
12	WEATHER STRIP QEBD650 Q-LON	STEEL	63	#8 X 2-1/4" PFH SCREW	STEEL
18	3.983" X 4.0" HINGE MIN 0.098" THICK	-	65	#10 X 2" PFH SCREW	STEEL
19	SILLKEY	STEEL	66	SIDELITE PANEL - SEE SIDELITE PANEL DETAIL SHEET FOR CONSTRUCTION DETAILS	-
21	KWIKSET LOCK -SERIES 200 PASSAGE	PC/ASA	67	PVC ASTRAGAL BY TRC	PVC
22	KWIKSET DEADBOLT -SERIES 600	STEEL	68	ASTRAGAL CHANNEL BY TRC	DIE CAST ZINC
23	STRIKE PLATE	STEEL	69	#8 X 2" PFH SCREW	DIE CAST ZINC
23A	DEADBOLT PLATE	STEEL	73	LVL SIDELITE TOP RAIL (FULL LITE)	POPLAR
24	#9 X 5/8" PFH SCREW	STEEL	74	LVL SIDELITE BOTTOM RAIL (FULL LITE)	POPLAR
25	OUTSWING HIGH-DAM THRESHOLD ALUMINUM W/ COMPOSITE SUBSTRATE	STEEL	75	LVL SIDELITE STILE (FULL LITE)	POPLAR
26	#9 X 1" PFH SCREW	ALUM./ COMP.			
27	OUTSWING THRESHOLD ALUMINUM W/ COMPOSITE SUBSTRATE	STEEL			
30	LATCH STILE - SG >= 0.42	ALUM./ COMP.			
31	LVL LOCK BLOCK	LVL/PVC			
32	HINGE STILE - SG >= 0.42	POPLAR			
33	TOP RAIL - POPLAR LVL & WPC COMBINATION	LVL/PVC			
34	BOTTOM RAIL - POPLAR LVL & WPC COMBINATION	POPLAR/WPC			
		POPLAR/WPC			

Documents Prepared By:
RW BUILDING CONSULTANTS, INC.
P.O. Box 230 Vairico FL 33595
Phone No.: 813.659.9197
Florida Board of Professional Engineers
Certificate Of Authorization No. 9813
Wendell W. Maney, P.E.
No. 54158

PRODUCT: TRINITY GLASS INT'L PREMIUM LITE FIBERGLASS
PART OR ASSEMBLY: BILL OF MATERIALS

NO.	DATE	BY	REVISIONS

DATE: 5/09/08
SCALE: N.T.S.
DWG. BY: YV
CHK. BY: WWH
DRAWING NO.: FL-11165.7
SHEET 14 of 14