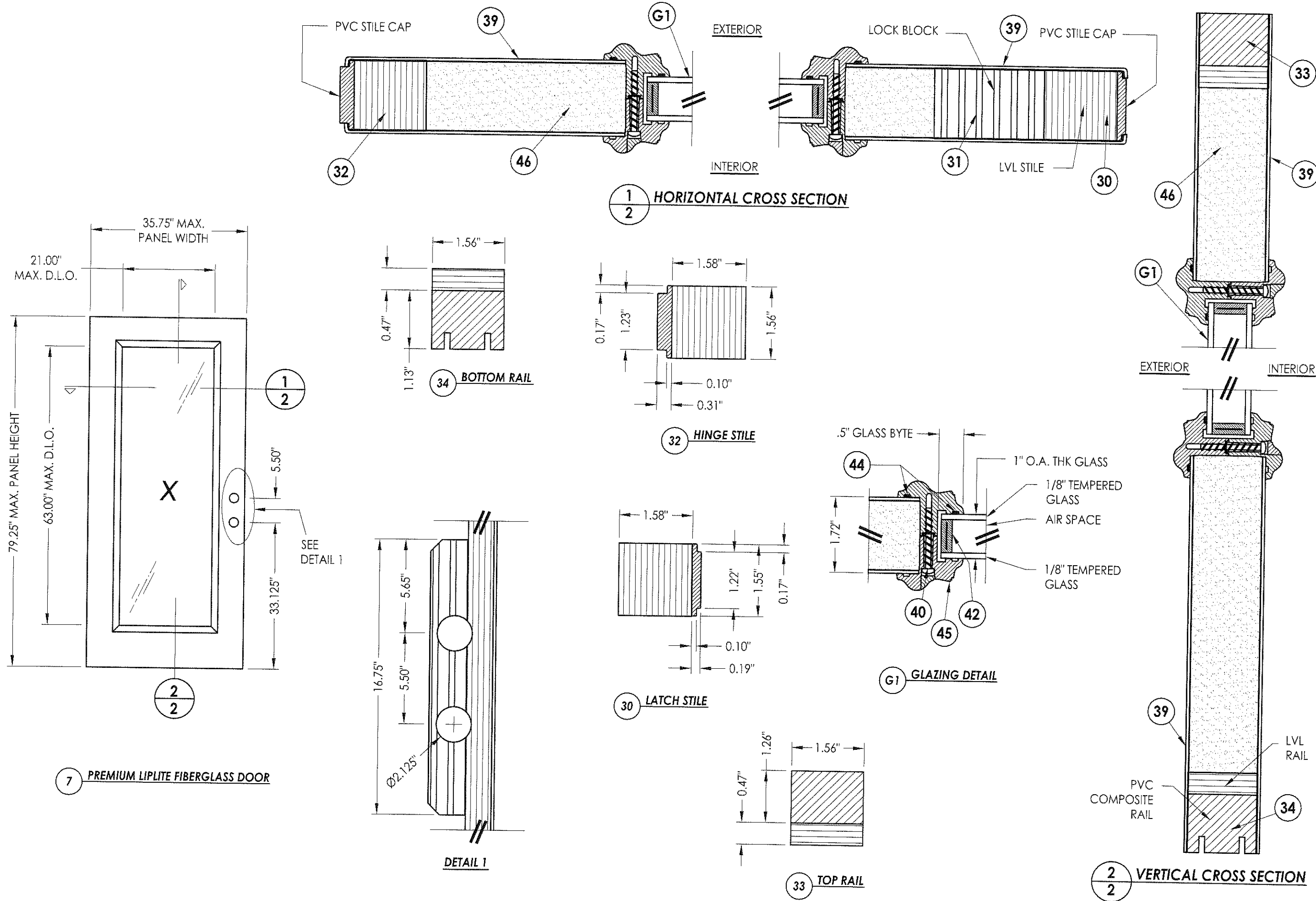


N:\Projects\Projects\Projects\1101 - 1200\PT1122\DWG\KWB\Drawings\FL-11165\FL-11165.1-7.dwg, Model



Documents Prepared By:

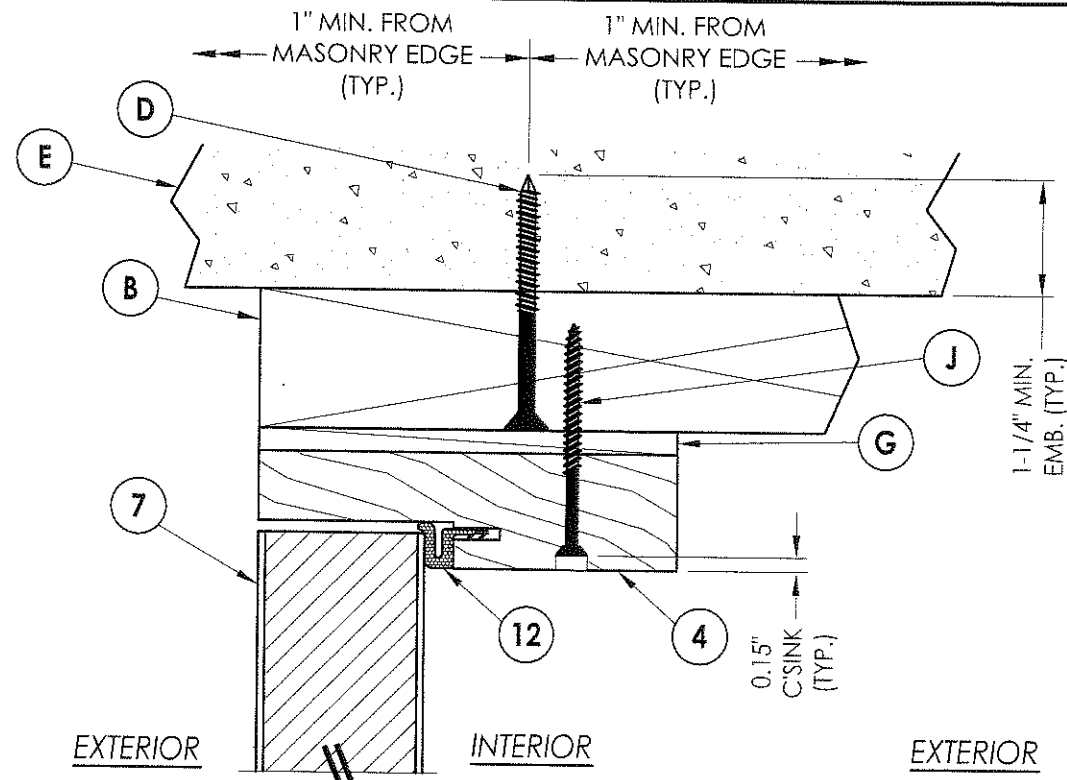
RW BUILDING CONSULTANTS, INC.
 P.O. Box 230 Valrico FL 33595
 Phone No.: 813.659.9197

Florida Board of Professional Engineers
 Certificate Of Authorization No. 9813
Wendell W. Haney B-1-08
 Wendell W. Haney, P.E. No. 54158

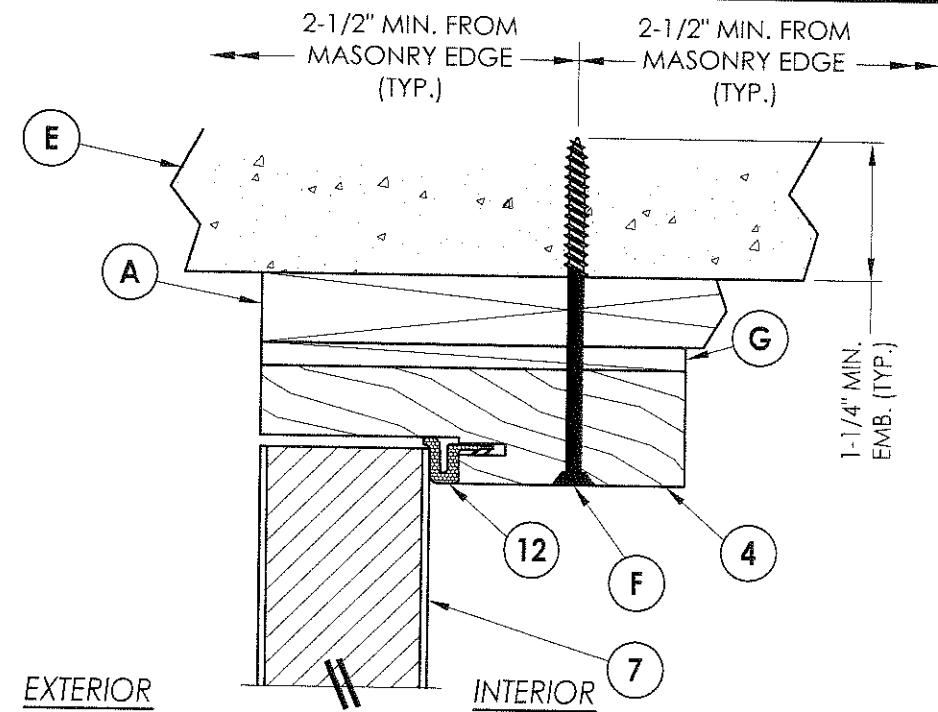
PRODUCT:	TRINITY GLASS INT'L PREMIUM LIPLITE FIBERGLASS	
PART OR ASSEMBLY:	DOOR PANEL CONSTRUCTION DETAILS AND GLAZING DETAILS	
NO.	DATE	BY
REVISIONS		
DATE:	5/09/08	
SCALE:	N.T.S.	
DWG. BY:	YV	
CHK. BY:	WWH	
DRAWING NO.:	FL-11165.6	
SHEET	2 OF 12	

© 2008 R.W. BUILDING CONSULTANTS INC.

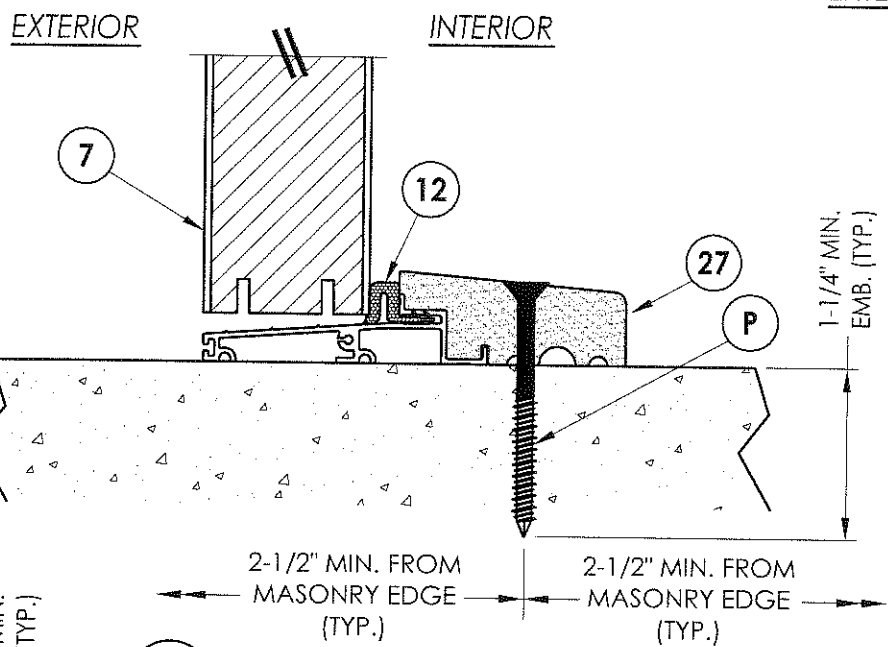
R:\Projects\Project folders\PROJ 1101 - 1200\p1112\1D - RWBC Drawings\FL-11165\FL-11165.1-7.dwg, Model



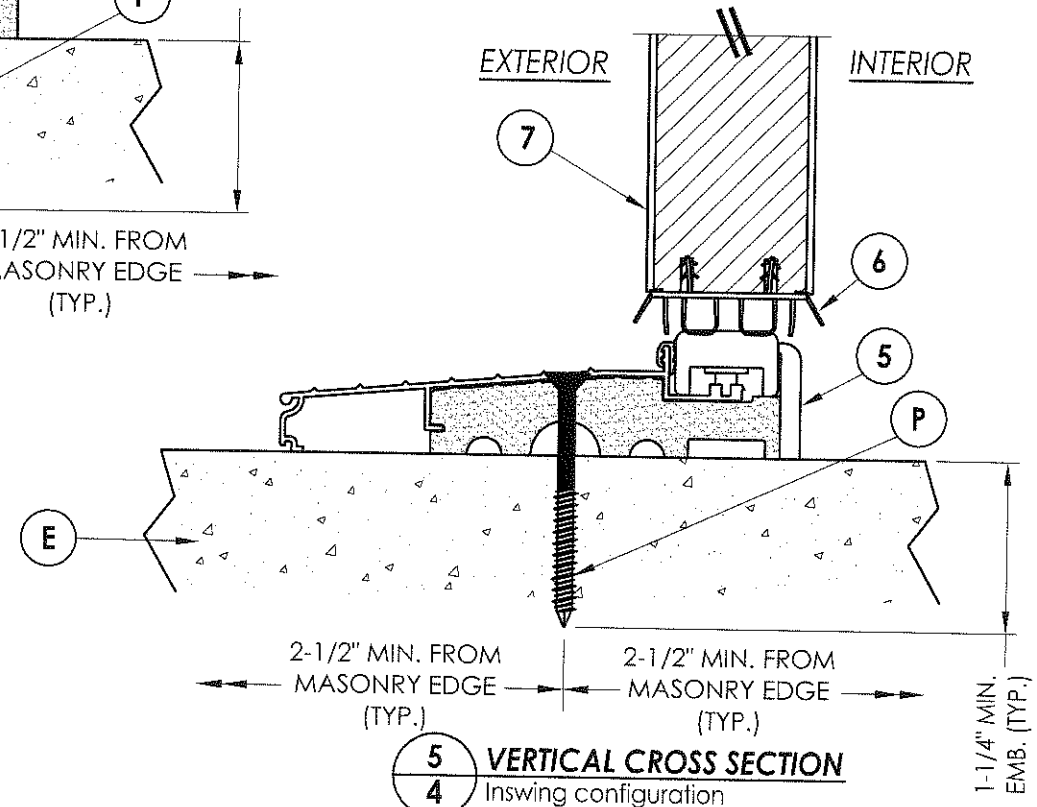
1 VERTICAL CROSS SECTION
 4 Outswing shown
 Inswing also approved



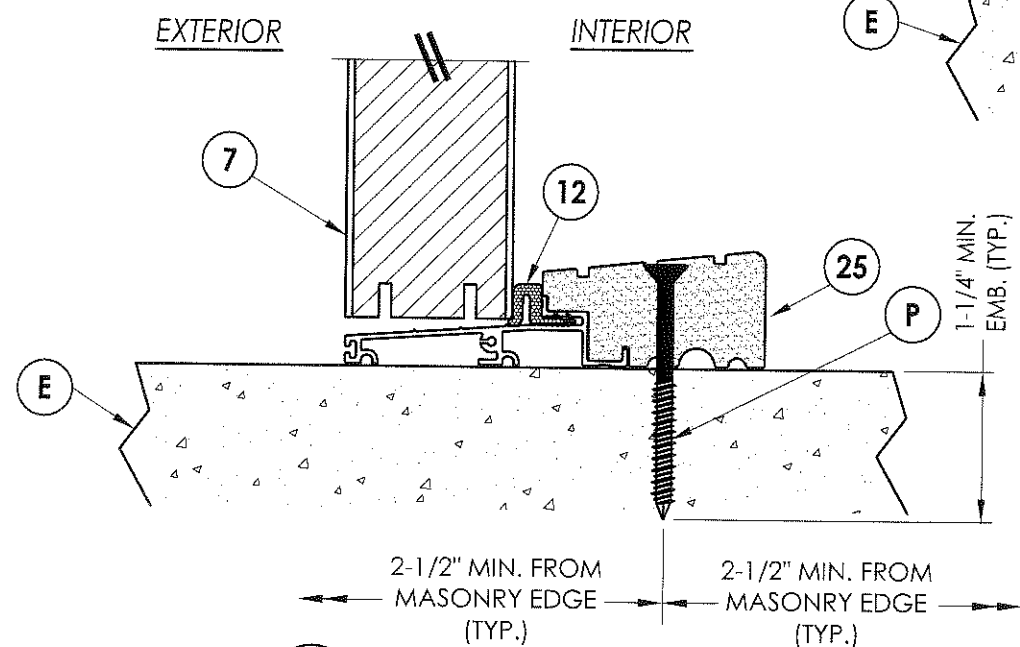
2 VERTICAL CROSS SECTION
 4 Shown w/1X sub-buck substituting
 concrete screws for wood screws per
 Section 1714.4.4.2 of the FBC



3 VERTICAL CROSS SECTION
 4 Outswing configuration
 see general notes, sheet 1
 for "HVHZ" water infiltration
 requirements



4 VERTICAL CROSS SECTION
 4 Inswing configuration
 see general notes, sheet 1
 for "HVHZ" water infiltration
 requirements



5 VERTICAL CROSS SECTION
 4 Outswing configuration
 see general notes, sheet 1
 for "HVHZ" water infiltration
 requirements

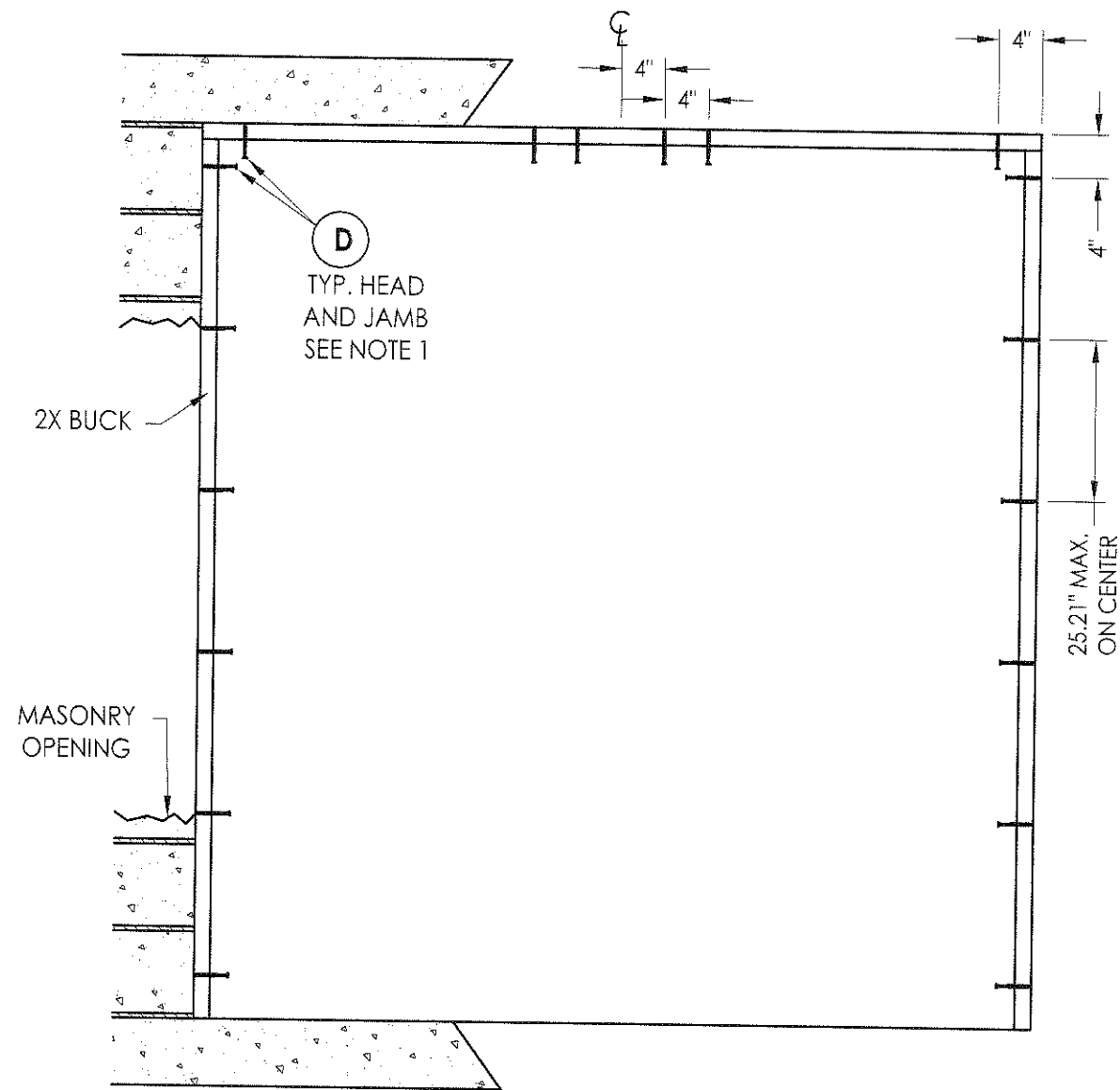
Documents Prepared By:
RW BUILDING CONSULTANTS, INC.
 P.O. Box 230 Valrico FL, 33595
 Phone No.: 813.659.9197
 Florida Board of Professional Engineers
 Certificate Of Authorization No. 9813
Wendell W. Hepler, P.E.
 No. 54158

PRODUCT: TRINITY GLASS INT'L PREMIUM LIPLITE FIBERGLASS
 PART OR ASSEMBLY: VERTICAL CROSS SECTIONS

NO.	DATE	BY	REVISIONS

DATE: 5/09/08
 SCALE: N.T.S.
 DWG. BY: YV
 CHK. BY: WWH
 DRAWING NO.: FL-11165.6
 SHEET 4 OF 12

© 2008 R.W. BUILDING CONSULTANTS INC.

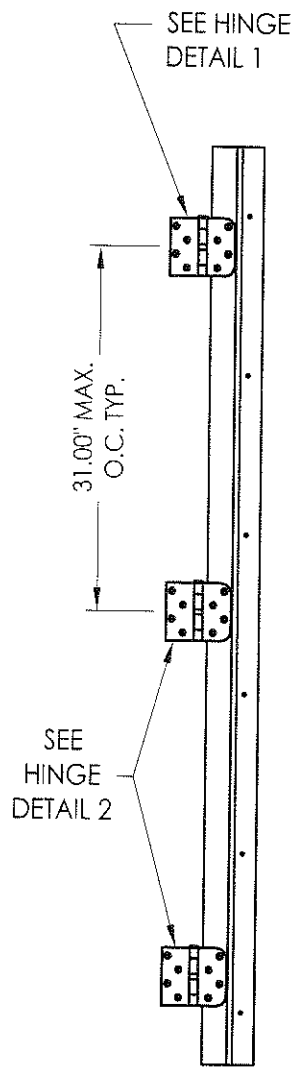


BUCK ANCHORING

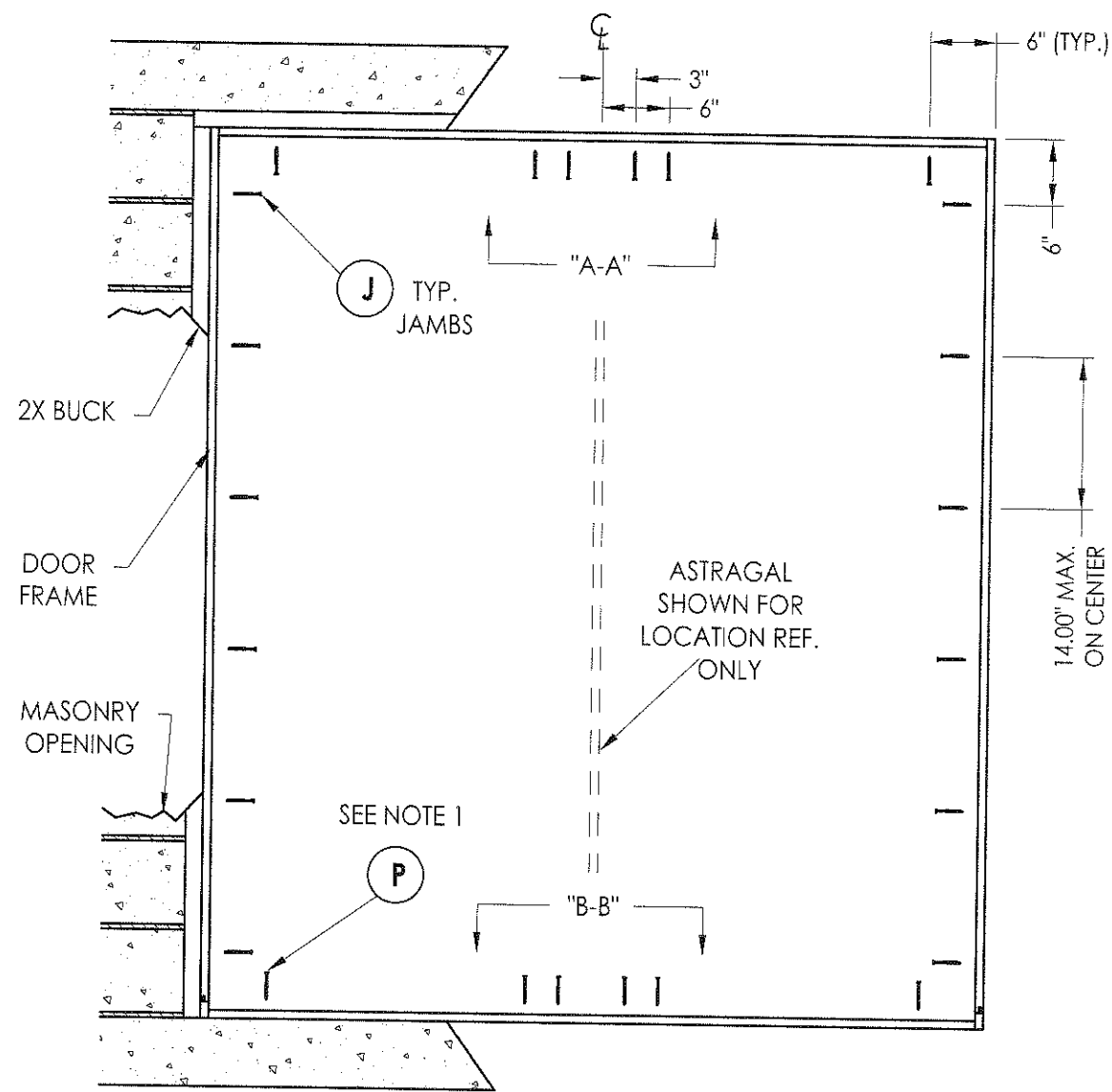
NOTES:

1. 1/4" Elco concrete screws anchoring 2x buck require a minimum 1" clearance to masonry edges, a 1-1/4" minimum embedment and a minimum 4" clearance to adjacent concrete screws. Substitution of equal concrete screws from a different supplier may have different edge distance and center distance requirements. Concrete screw locations at the corners and astragal may be adjusted to maintain the minimum edge distance to mortar joints. If concrete screw locations noted as "MAX. ON CENTER" must be adjusted to maintain the minimum edge distance to mortar joints, additional concrete screws may be required to ensure the maximum on center dimension is not exceeded.

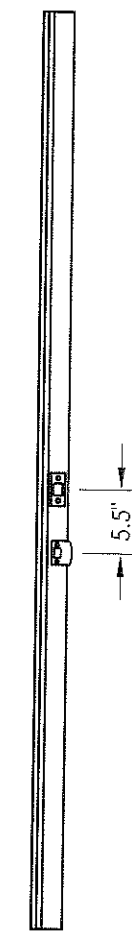
Documents Prepared By: RW BUILDING CONSULTANTS, INC. P.O. Box 230 Valrico FL 33595 Phone No.: 813.659.9197 Florida Board of Professional Engineers Certificate Of Authorization No. 9813 <i>Wendell W. Mabey</i> B-1-08 Wendell W. Mabey, P.E. No. 54158	
PRODUCT: TRINITY GLASS INT'L PREMIUM LIPLITE FIBERGLASS	PART OR ASSEMBLY: BUCK ANCHORING
NO.	DATE
REVISIONS	BY
DATE: 5/09/08	
SCALE: N.T.S.	
DWG. BY: YV	
CHK. BY: WWH	
DRAWING NO.: FL-11165.6	
SHEET 5 of 12	



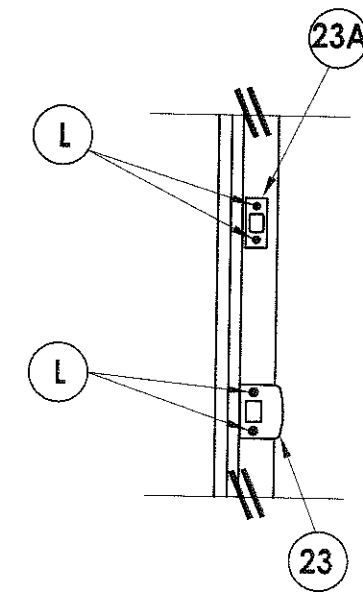
HINGE JAMB



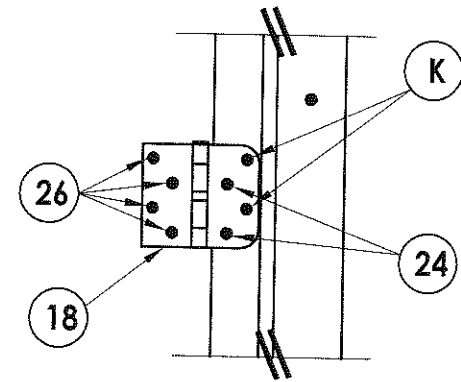
FRAME ANCHORING
Masonry 2X buck construction



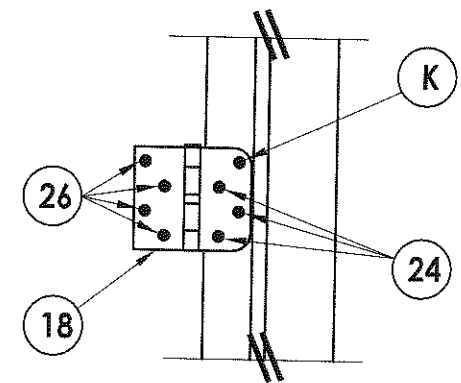
ASTRAGAL STRIKE



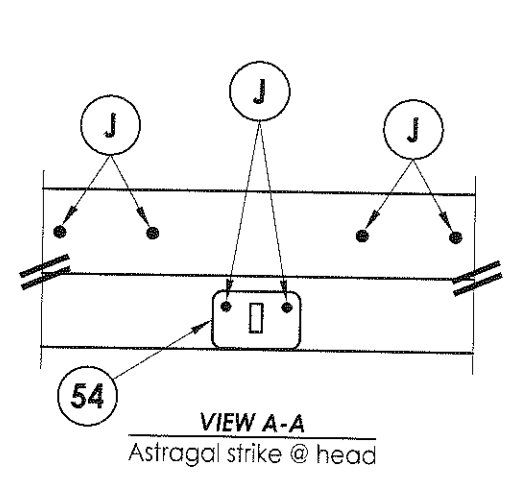
STRIKE PLATE DETAIL
Astragal



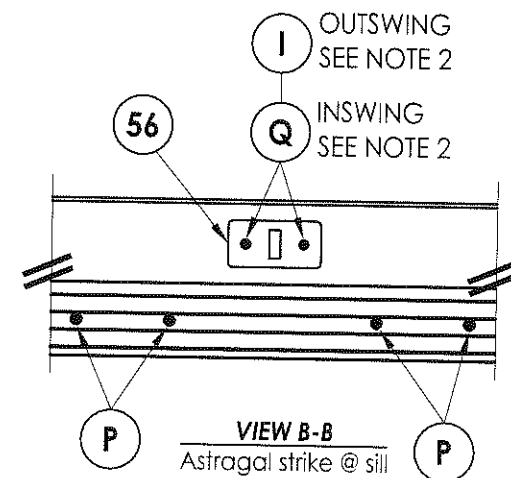
HINGE DETAIL 1



HINGE DETAIL 2



VIEW A-A
Astragal strike @ head

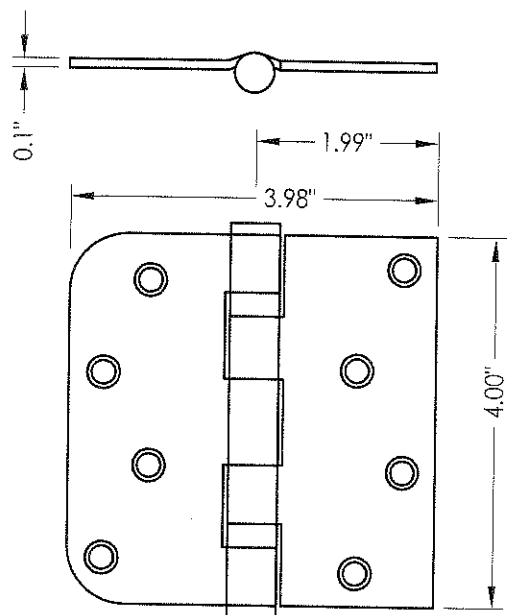


VIEW B-B
Astragal strike @ sill

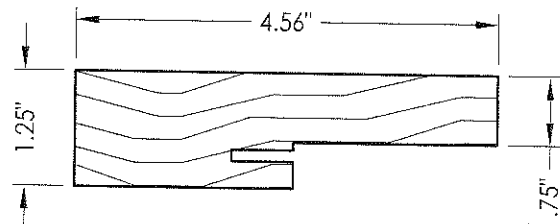
NOTES:

- 1/4" ITW concrete screws anchoring frame and/or sill require a minimum 2-1/2" clearance to masonry edges, a 1-1/4" minimum embedment and a minimum 3" clearance to adjacent concrete screws. Substitution of equal concrete screws from a different supplier may have different edge distance and center distance requirements. Concrete screw locations at the corners and at astragal locations may be adjusted to maintain the minimum edge distance to mortar joints. If concrete screw locations noted as "MAX. ON CENTER" must be adjusted to maintain the minimum edge distance to mortar joints, additional concrete screws may be required to ensure the maximum on center dimension is not exceeded.
- 3/16" ITW concrete screws anchoring frame and/or sill require a minimum 2-5/8" clearance to masonry edges, a 1-1/4" minimum embedment and a minimum 2-1/4" clearance to adjacent concrete screws unless otherwise noted by concrete screw manufacturer.

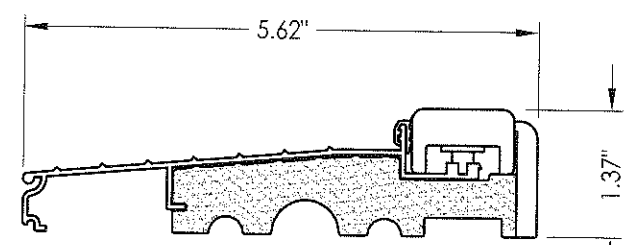
Documents Prepared By: RW BUILDING CONSULTANTS, INC. P.O. Box 230 Valrico FL 33595 Phone No.: 813.659.9197	
Florida Board of Professional Engineers Certificate Of Authorization No. 9813 <i>Wendell W. Honey</i> B-1-08 Wendell W. Honey, P.E. No. 54158	
PRODUCT: TRINITY GLASS INT'L PREMIUM LIPLITE FIBERGLASS	PART OR ASSEMBLY: FRAME ANCHORING 2X BUCK MASONRY CONSTRUCTION
NO.	DATE
BY	REVISIONS
DATE: 5/09/08	
SCALE: N.T.S.	
DWG. BY: YV	
CHK. BY: WWH	
DRAWING NO.: FL-11165.6	
SHEET 6 OF 12	



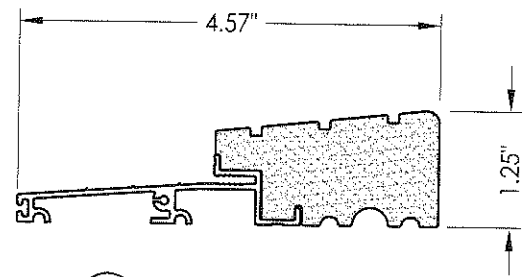
18 HINGE



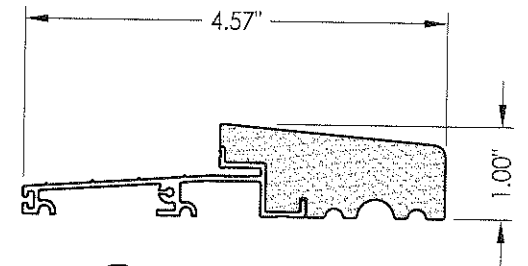
4 3 SIDE & HEAD JAMBS



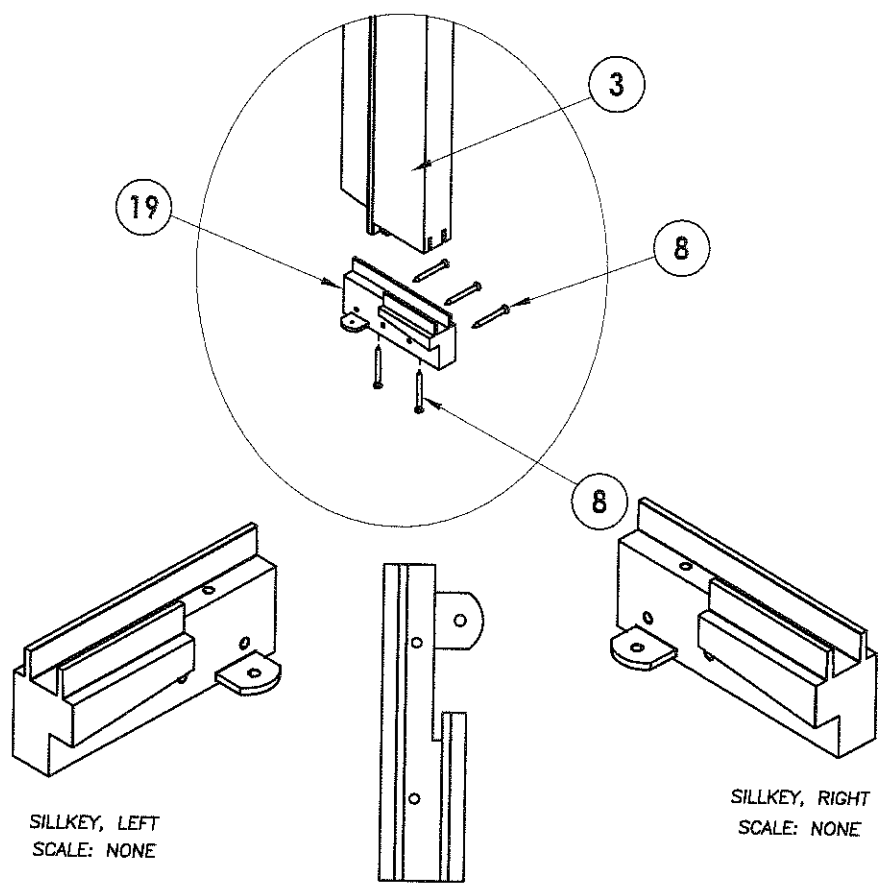
5 INSWING THRESHOLD



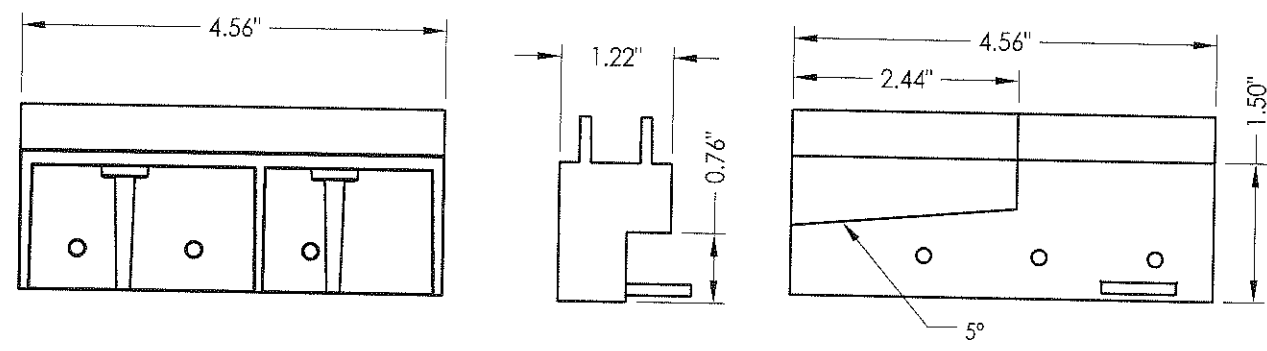
25 OUTSWING THRESHOLD
High-dam option



27 OUTSWING THRESHOLD



19 SILLKEY DETAILS
Optional

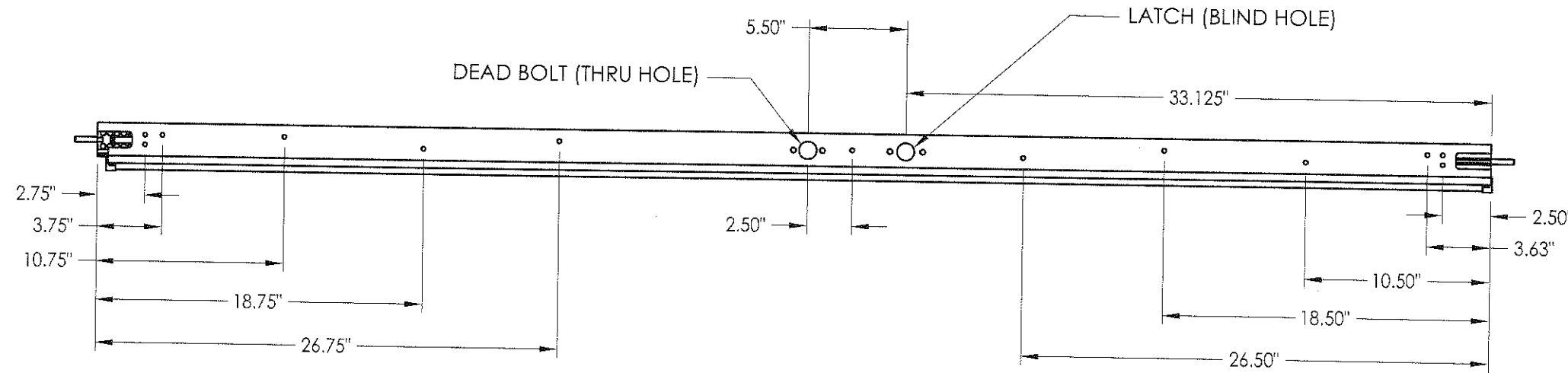


Documents Prepared By:
RW BUILDING CONSULTANTS, INC.
 P.O. Box 230 Vairico FL 33595
 Phone No.: 813.659.9197
 Florida Board of Professional Engineers
 Certificate of Authorization No. 9813
Wendell W. Haney B-1-08
 Wendell W. Haney, P.E. No. 54158

PRODUCT: TRINITY GLASS INT'L
 PREMIUM LIPLITE FIBERGLASS
 PART OR ASSEMBLY: COMPONENTS

NO.	DATE	REVISIONS	BY

DATE: 5/09/08
 SCALE: N.T.S.
 DWG. BY: YV
 CHK. BY: WWH
 DRAWING NO.: FL-11165.6
 SHEET 8 OF 12



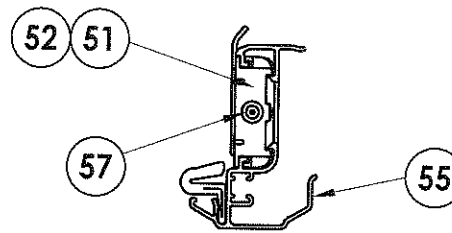
TOP

BOTTOM

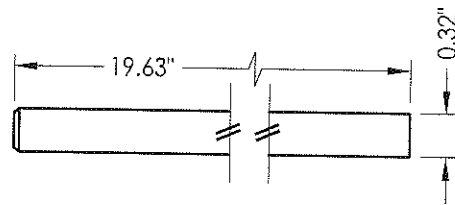


A-A

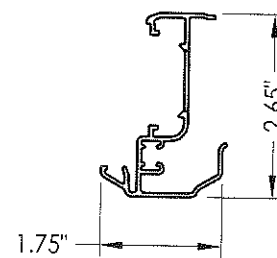
6'8 ALUMINUM ASTRAGAL ASSEMBLY
By Endura Product



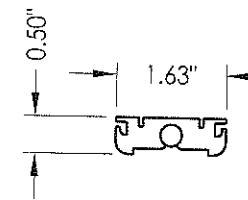
VIEW A-A
Aluminum Astragal Assembly



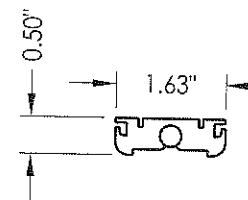
57 SLIDE BOLT ROD
MATL: Steel



55 ALUMINUM ASTRAGAL
By Endura Product



52 TOP BOLT RETAINER
MATL: 9-3/4\"/>



51 TOP BOLT RETAINER
MATL: 4-3/4\"/>

Documents Prepared By:
RW BUILDING CONSULTANTS, INC.
P.O. Box 230 Vairico FL 33595
Phone No.: 813.659.9197
Florida Board of Professional Engineers
Certificate of Authorization No. 9813
Wendell W. Hodges B-1-08
Wendell W. Hodges, P.E. No. 54158

PRODUCT:
TRINITY GLASS INT'L
PREMIUM LIPLITE FIBERGLASS
PART OR ASSEMBLY:
ENDURA ASTRAGAL DETAILS

NO.	DATE	BY	REVISIONS

DATE: 5/09/08
SCALE: N.T.S.
DWG. BY: YV
CHK. BY: WWH
DRAWING NO.: FL-11165.6
SHEET 9 OF 12

C:\p11165.6\DWG\11165.6.dwg, Model

BILL OF MATERIALS			BILL OF MATERIALS		
ITEM	DESCRIPTION	MATERIAL	ITEM	DESCRIPTION	MATERIAL
A	1X BUCK SG >= 0.55	WOOD	50	FLUSHBOLT BAR	STEEL
B	2X BUCK SG >= 0.55	WOOD	51	4-3/4" LENGTH TOP BOLT RETAINER	HDPE
D	1/4" X 2-3/4" ELCO PFH CONCRETE SCREW	STEEL	52	9-3/4" LENGTH TOP BOLT RETAINER	ALUMINUM
E	MASONRY - 3,192 PSI MIN. CONCRETE CONFORMING TO ACI 301 OR HOLLOW BLOCK CONFORMING TO ASTM C90	CONCRETE	53	#8 X 1-3/4" PFH SMS	STEEL
F	1/4" X 3-3/4" ITW PFH CONCRETE SCREW	STEEL	54	ASTRAGAL STRIKE @ HEAD	STEEL
G	MAX. 1/4" SHIM SPACE	WOOD	55	ASTRAGAL BY ENDURA PRODUCT	ALUMINUM
H	1/4" X 3-1/4" ITW PFH CONCRETE SCREW	STEEL	56	ASTRAGAL STRIKE @ SILL	STEEL
I	3/16" X 1-3/4" ITW PFH CONCRETE SCREW	STEEL	57	SLIDE BOLT ROD	STEEL
J	#10 X 2-1/2" PFH WS	STEEL	58	ASTRAGAL BY TRC	ALUMINUM
K	#9 X 2" PFH WS	STEEL	59	ASTRAGAL CHANNEL BY TRC	ALUMINUM
L	#8 X 2-1/2" PFH WS	STEEL	67	PVC ASTRAGAL BY TRC	PVC
P	1/4" X 2-3/4" ITW PFH CONCRETE SCREW	STEEL	68	ASTRAGAL CHANNEL BY TRC	DIE CAST ZINC
Q	3/16" X 3-1/4" ITW CONCRETE SCREW	STEEL	69	#8 X 2" PFH SCREW	DIE CAST ZINC
3	HINGE JAMB - FINGER-JOINT PINE - SG >= 0.42	WOOD			
4	HEAD - FINGER-JOINT PINE - SG >= 0.42	WOOD			
5	INSWING THRESHOLD ALUMINUM W/ COMPOSITE SUBSTRATE	ALUMINUM			
6	DOOR BOTTOM SWEEP	PVC			
7	DOOR PANEL - SEE DOOR PANEL DETAIL SHEET FOR CONSTRUCTION DETAILS	-			
8	#6 X 1-1/4" PFH DRYWALL SCREW	STEEL			
12	WEATHER STRIP QEBD650 Q-LON	-			
18	3.983" X 4.0" HINGE MIN 0.098" THICK	STEEL			
19	SILLKEY	PC/ASA			
21	KWIKSET LOCK -SERIES 200 PASSAGE	STEEL			
22	KWIKSET DEADBOLT -SERIES 600	STEEL			
23	STRIKE PLATE	STEEL			
23A	DEADBOLT PLATE	STEEL			
24	#9 X 5/8" PFH SCREW	STEEL			
25	OUTSWING HIGH-DAM THRESHOLD ALUMINUM W/ COMPOSITE SUBSTRATE	ALUM./ COMP.			
26	#9 X 1" PFH SCREW	STEEL			
27	OUTSWING THRESHOLD ALUMINUM W/ COMPOSITE SUBSTRATE	ALUM./ COMP.			
30	LATCH STILE - SG >= 0.42	LVL/PVC			
31	LVL LOCK BLOCK	POPLAR			
32	HINGE STILE - SG >= 0.42	LVL/PVC			
33	TOP RAIL - POPLAR LVL & WPC COMBINATION	POPLAR/WPC			
34	BOTTOM RAIL - POPLAR LVL & WPC COMBINATION	POPLAR/WPC			
39	FIBERGLASS SKIN 0.079" MIN. THICKNESS (Fy = 5,203 PSI MIN.)	FIBERGLASS			
40	#8 X 1-1/8" SELF THREADING SCREW	STEEL			
42	ALUMINUM & BUTYL SPACER SYSTEM	ALUM./BUTYL			
44	HOT MELT SEALANT / SILICONE	-			
45	LITE FRAME	PC/ASA			
46	FOAM CORE	POLYURETHANE			

Documents Prepared By:

RW BUILDING CONSULTANTS, INC.
P.O. Box 230 Valrico FL 33595
Phone No.: 813.659.9197
Florida Board of Professional Engineers
Certificate Of Authorization No. 9813

Wendell W. Harty, P.E.
Wendell W. Harty, P.E. No. 54158

PRODUCT:
TRINITY GLASS INT'L
PREMIUM LIPLITE FIBERGLASS

PART OR ASSEMBLY:
BILL OF MATERIALS

NO.	DATE	BY	REVISIONS

DATE: 5/09/08
SCALE: N.T.S.
DWG. BY: YV
CHK. BY: WWH
DRAWING NO.:
FL-11165.6
SHEET 12 OF 12