



4621 192nd STREET EAST TACOMA, WA 98446

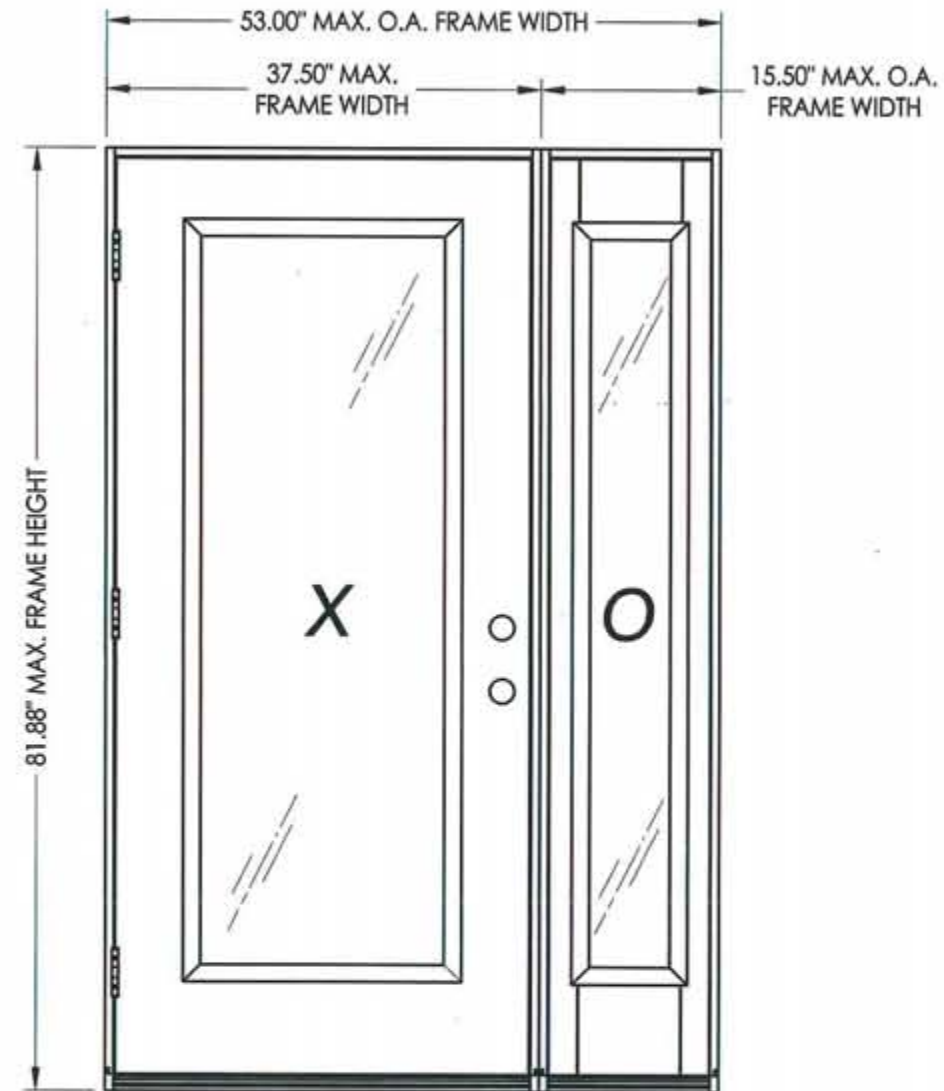
## PREMIUM LIPLITE FIBERGLASS DOOR INSWING / OUTSWING "NON-IMPACT"

### GENERAL NOTES

1. This product has been evaluated and is in compliance with the 2007 Florida Building Code (FBC) structural requirements including the "High Velocity Hurricane Zone" (HVHZ).
2. Product anchors shall be as listed and spaced as shown on details. Anchor embedment to base material shall be beyond wall dressing or stucco.
3. When used in the "HVHZ" this product is required to be protected with an impact resistant covering that complies with Section 1626 of the 2007 FBC.
4. When used in areas outside of the "HVHZ" requiring wind borne debris protection this product is required to be protected with an impact resistant covering that complies with Section 1609.1.2 of the FBC.
5. For 2x stud framing construction, anchoring of these units shall be the same as that shown for 2x buck masonry construction.
6. Site conditions that deviate from the details of this drawing require further engineering analysis by a licensed engineer or registered architect.
7. Outswing configuration using threshold item #25 meet water infiltration requirements for "HVHZ".
8. Inswing configurations and outswing configuration using threshold item #27 do not meet the water infiltration requirements for the "HVHZ" and shall be installed only in non-habitable areas or at habitable locations protected by an overhang or canopy such that the angle between the edge of canopy or overhang to sill is less than 45 degrees.

### TABLE OF CONTENTS

SHEET #	DESCRIPTION
1	Typical elevations, design pressures & general notes
2	Door panel construction details & glazing details
3	Sidelite panel construction details & glazing details
4	Horizontal cross sections
5	Vertical cross sections
6	Vertical cross sections
7	Buck and frame anchoring - 2X buck masonry construction
8	Frame anchoring - 1X buck masonry construction
9	Components
10	Bill of materials



SINGLE with BOXED SIDELITE

SWING	MAX. FRAME DIMENSION	GLASS TYPE	DESIGN PRESSURE (PSF)	
			POSITIVE	NEGATIVE
INSWING	53.00" x 81.88"	G1	+47.0	-47.0
OUTSWING	53.00" x 80.75"		+47.0	-47.0

Documents Prepared By:  
**RW** BUILDING CONSULTANTS, INC.  
 P.O. Box 230 Valrico FL 33595  
 Phone No.: 813.659.9197  
 Florida Board of Professional Engineers  
 Certificate Of Authorization No. 9813  
*Wendell W. Hays, P.E.* No. 54158

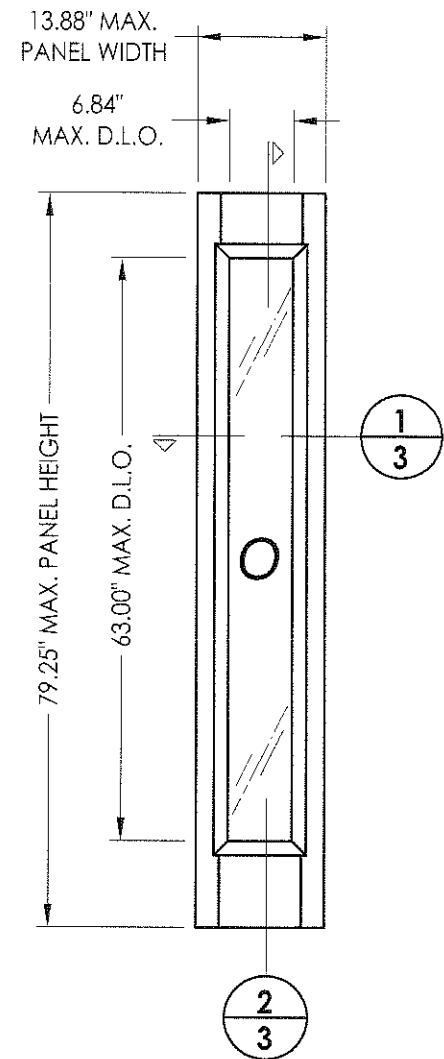
PRODUCT: TRINITY GLASS INT'L  
 PREMIUM LIPLITE FIBERGLASS  
 PART OR ASSEMBLY:  
 TYPICAL ELEVATION, DESIGN PRESSURES & GENERAL NOTES

NO.	DATE	BY	REVISIONS

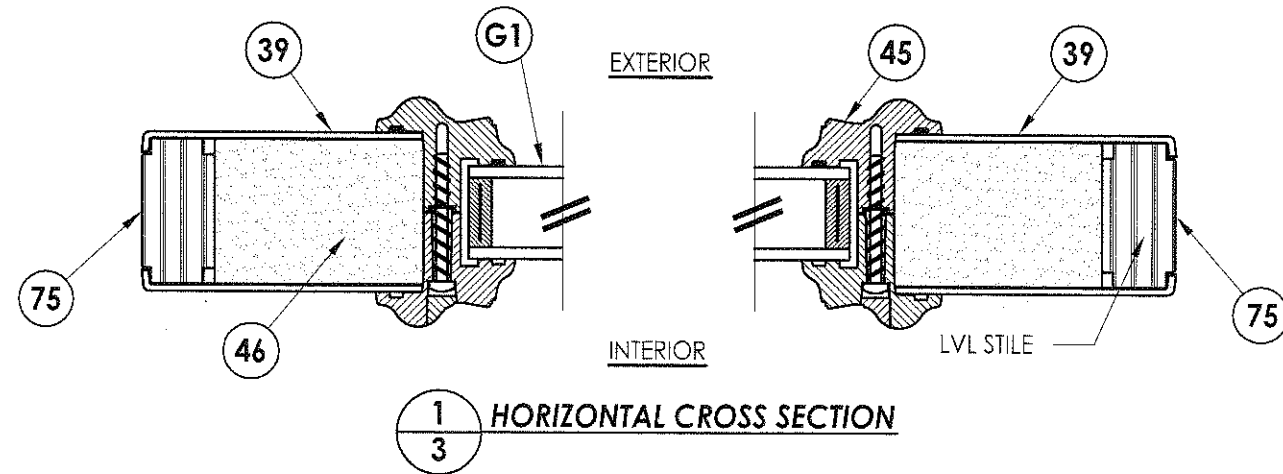
DATE: 5/09/08  
 SCALE: N.T.S.  
 DWG. BY: YV  
 CHK. BY: WWH  
 DRAWING NO.: FL-11165.3  
 SHEET 1 of 10



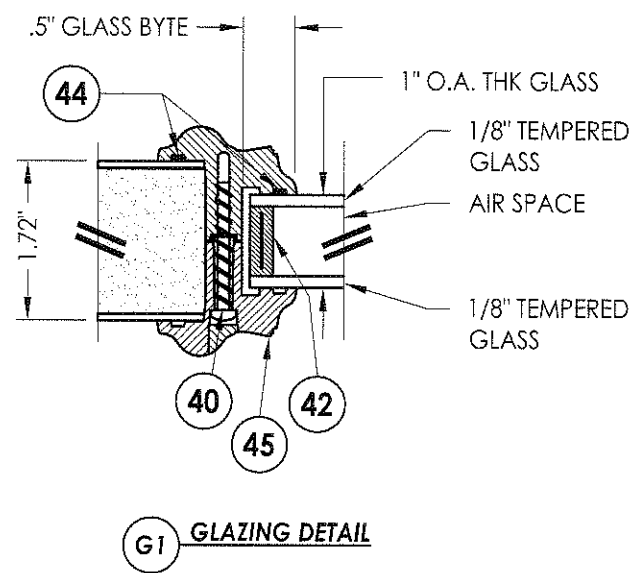
K:\VA - Project\Project folders\Proj 1101 - 1200\PR1124\DWG Drawings\FL-11165\1-L-11165.1-7.dwg, Model



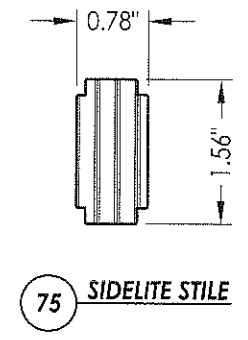
66 PREMIUM LIPLITE FIBERGLASS SIDELITE



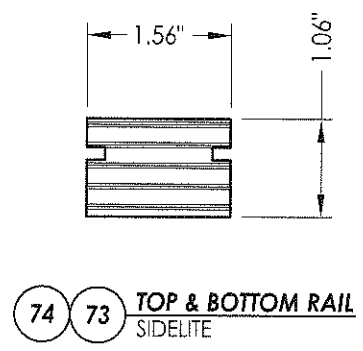
1/3 HORIZONTAL CROSS SECTION



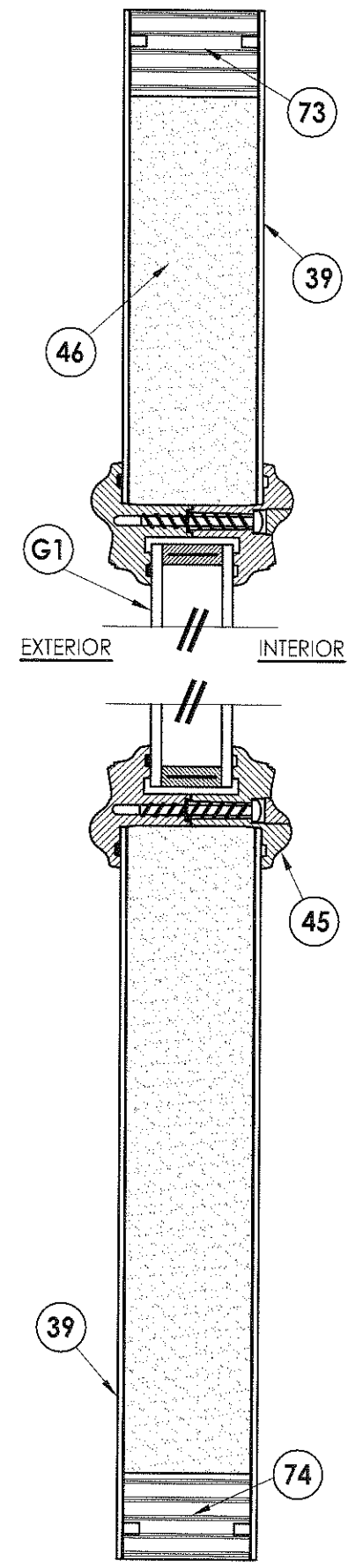
G1 GLAZING DETAIL



75 SIDELITE STILE



74 73 TOP & BOTTOM RAIL SIDELITE



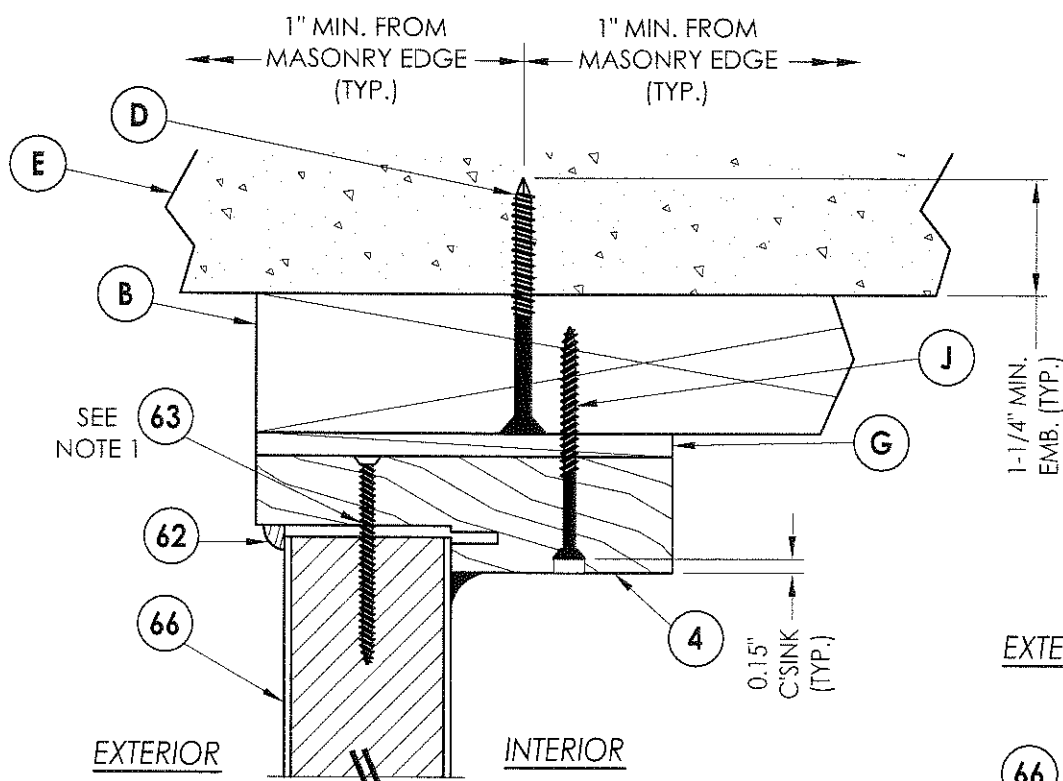
2/3 VERTICAL CROSS SECTION

Documents Prepared By: **RW** BUILDING CONSULTANTS, INC.  
P.O. Box 230 Valrico FL 33595  
Phone No.: 813.659.9197  
Florida Board of Professional Engineers  
Certificate of Authorization No. 9813  
Wendell W. Haney, P.E. No. 54158

PRODUCT:	TRINITY GLASS INT'L PREMIUM LIPLITE FIBERGLASS	
PART OR ASSEMBLY:	SIDELITE PANEL CONSTRUCTION DETAILS AND GLAZING DETAILS	
NO.	DATE	BY
REVISIONS		
DATE: 5/09/08		
SCALE: N.T.S.		
DWG. BY: YV		
CHK. BY: WWH		
DRAWING NO.: FL-11165.3		
SHEET 3 OF 10		

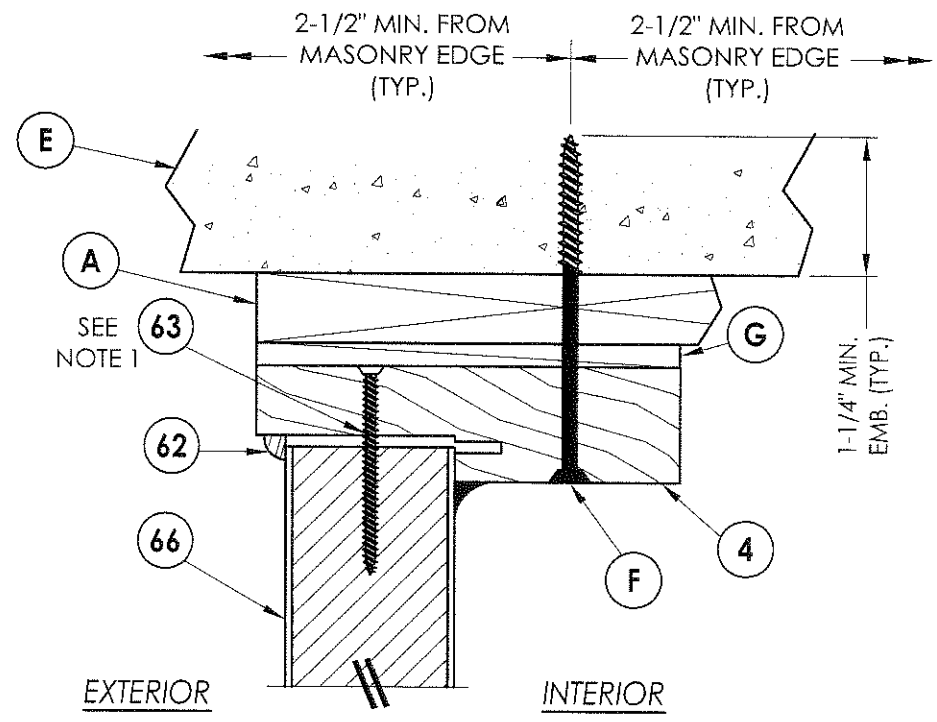




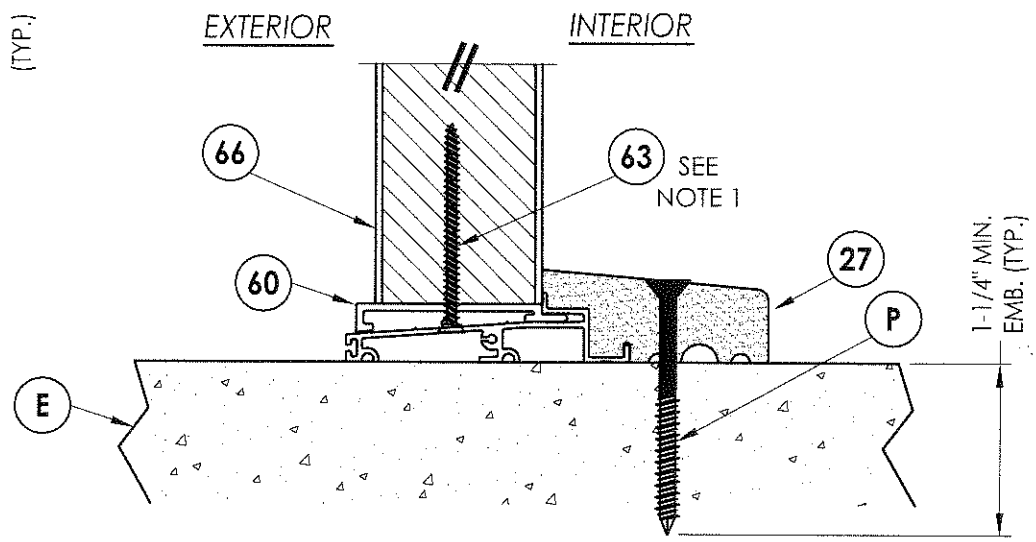


**1** VERTICAL CROSS SECTION  
**6**

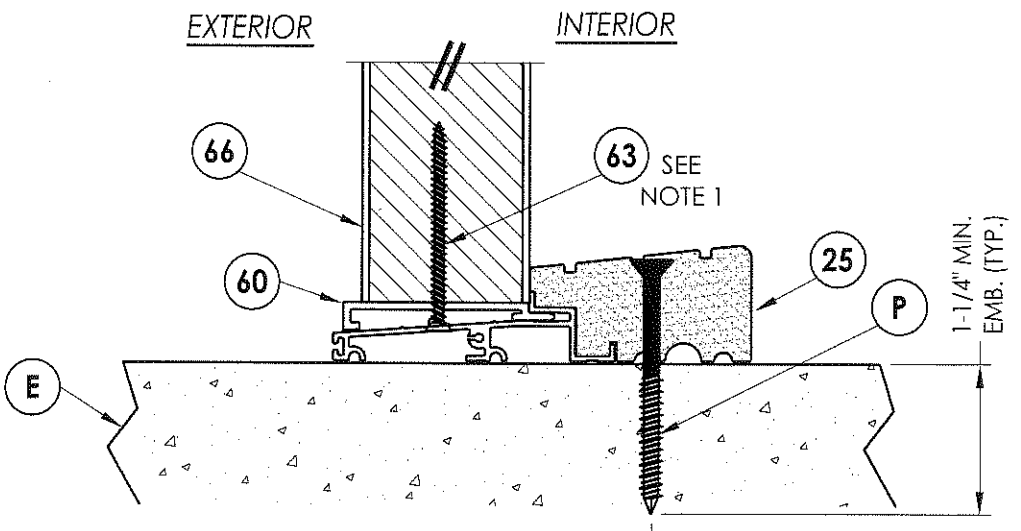
NOTE:  
1. Screws thru head and sill jamb located 3" from each end and on center line.



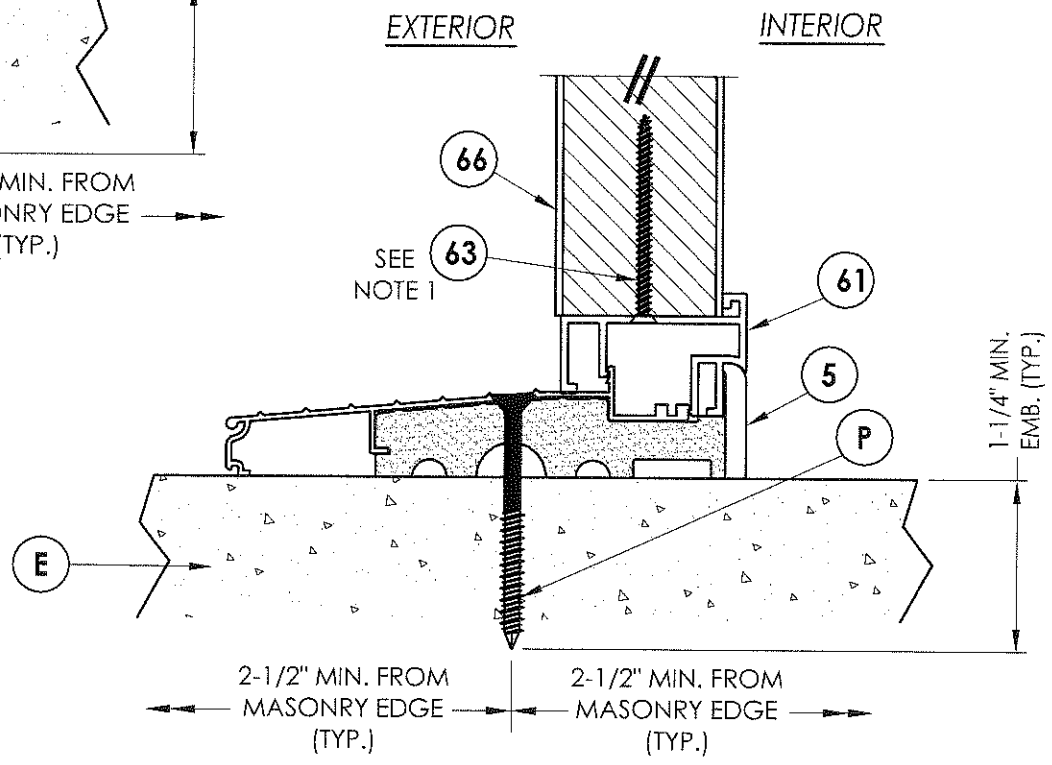
**2** VERTICAL CROSS SECTION  
**6** Shown w/1X sub-buck substituting concrete screws for wood screws per Section 1714.5.4.2 of the FBC



**4** VERTICAL CROSS SECTION  
**6** Outswing sill



**3** VERTICAL CROSS SECTION  
**6** Outswing sill - high dam



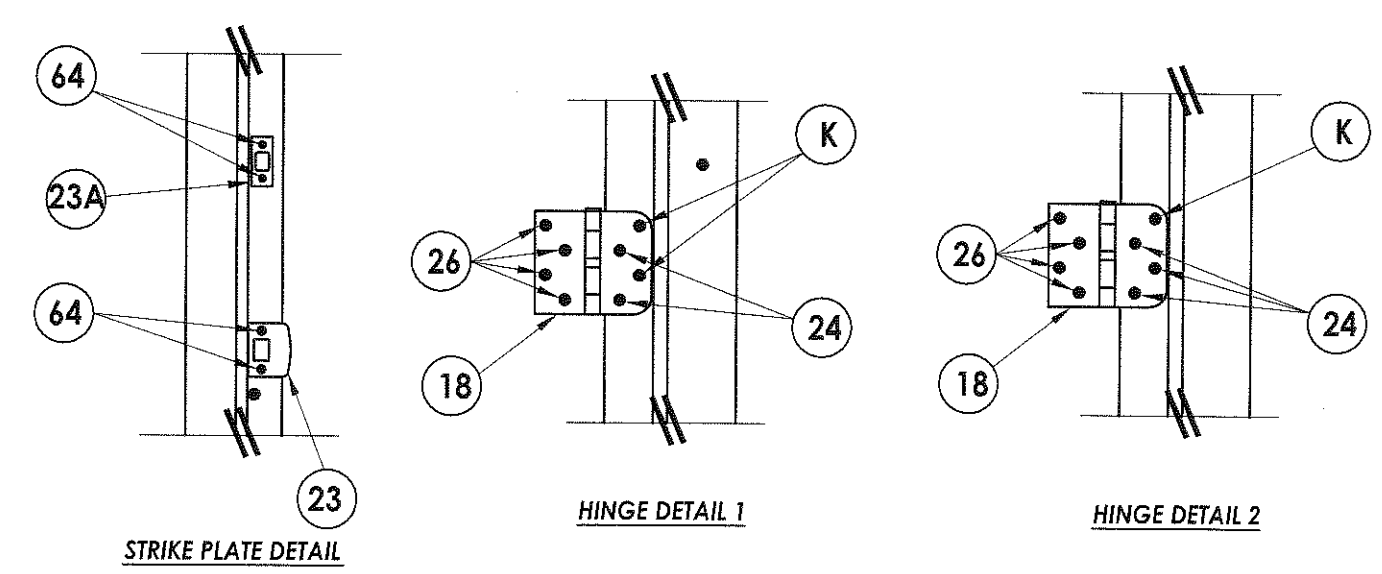
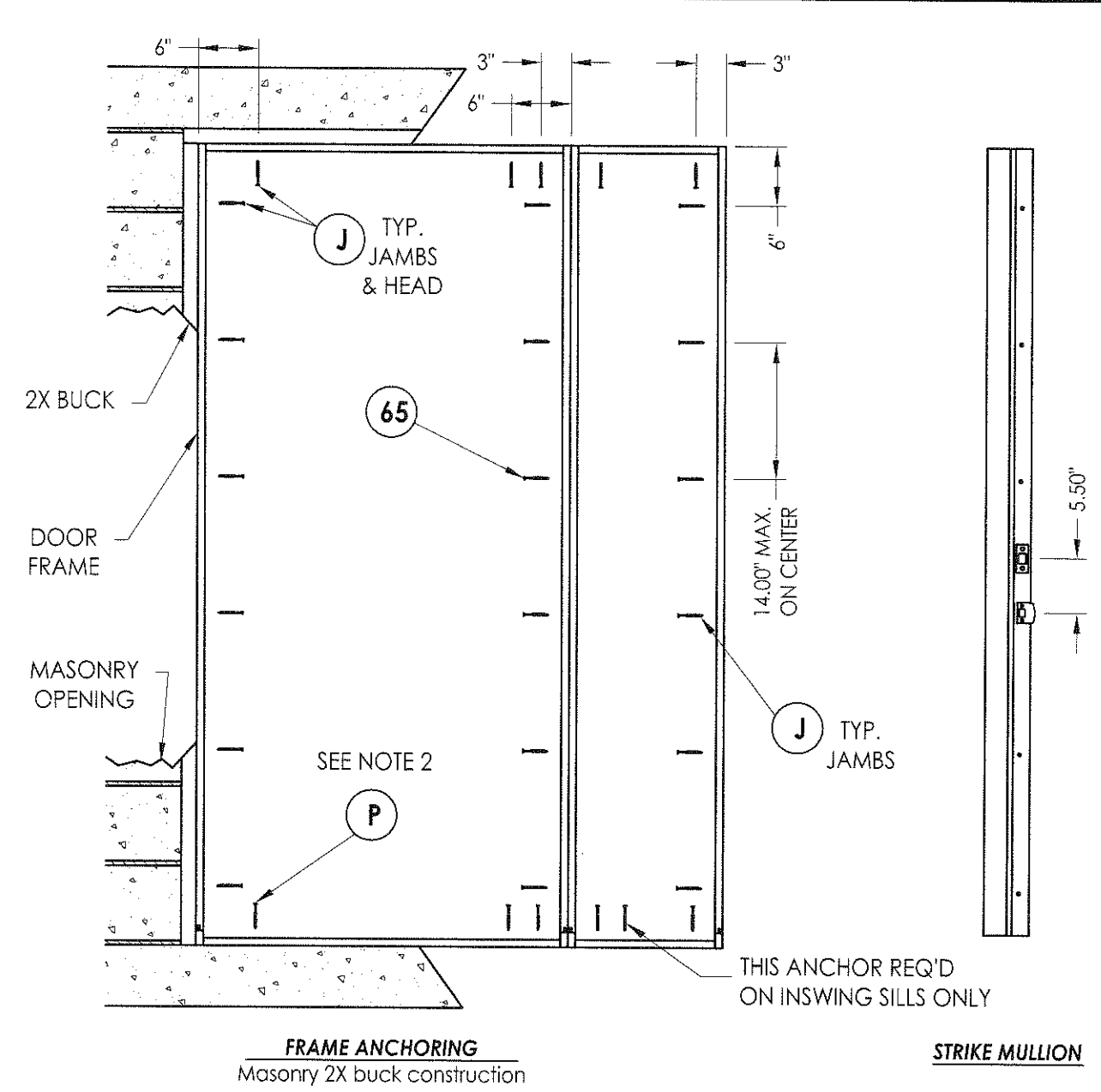
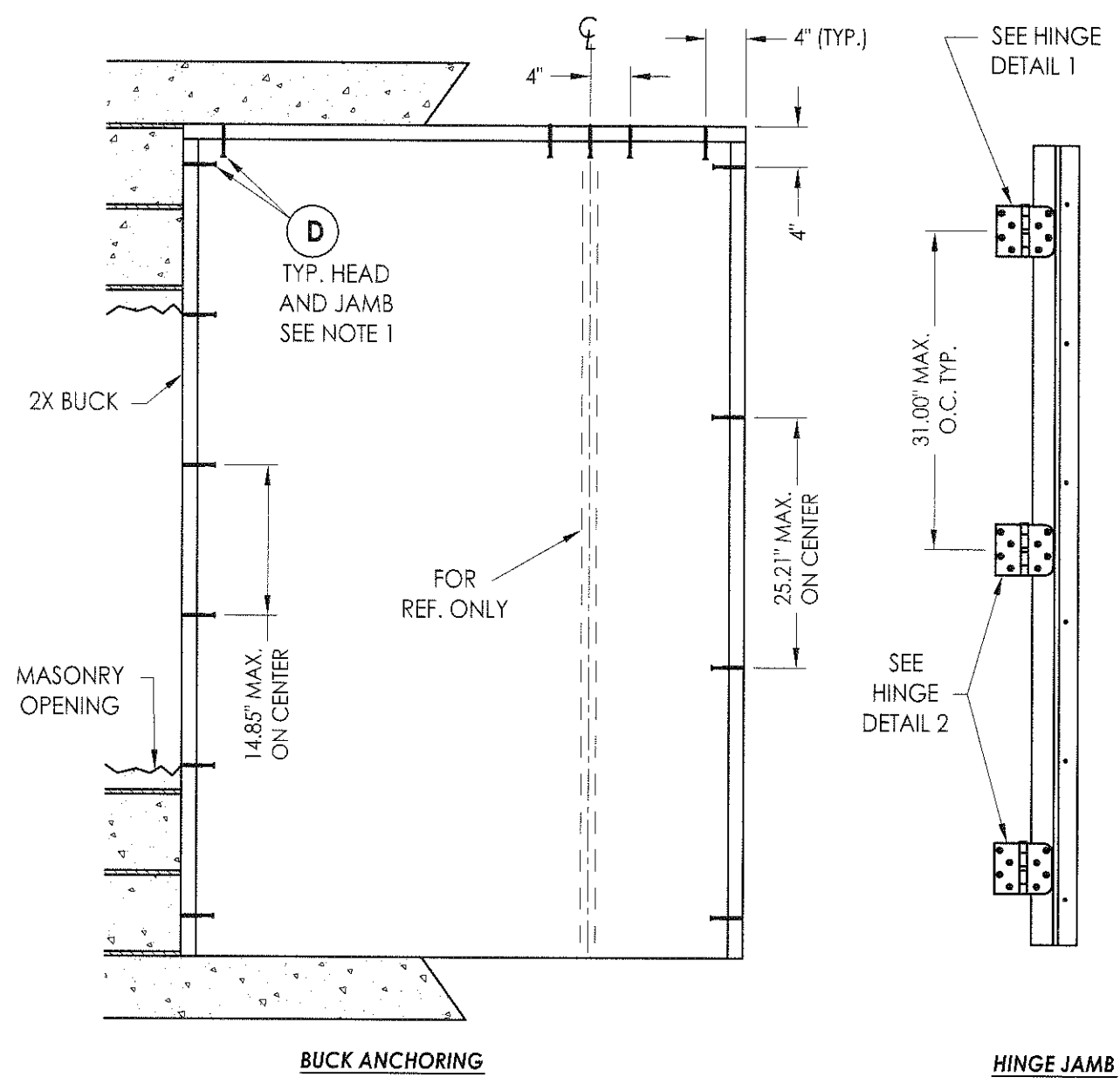
**5** VERTICAL CROSS SECTION  
**6** Inswing sill

Documents Prepared By:  
**RW** BUILDING CONSULTANTS, INC.  
P.O. Box 230 Vairico FL 33595  
Phone No.: 813.659.9197  
Florida Board of Professional Engineers  
Certificate Of Authorization No. 9813  
*Wendell W. Haney* 8-1-08  
Wendell W. Haney, P.E. No. 54158

PRODUCT: TRINITY GLASS INT'L PREMIUM LIPLITE FIBERGLASS  
PART OR ASSEMBLY: VERTICAL CROSS SECTIONS

NO.	DATE	BY	REVISIONS

DATE: 5/09/08  
SCALE: N.T.S.  
DWG. BY: YV  
CHK. BY: WWH  
DRAWING NO.: FL-11165.3  
SHEET 6 OF 10



- NOTES:**
- 1/4" Elco Concrete screws anchoring 2x buck require a minimum 1" clearance to masonry edges, a 1-1/4" minimum embedment and a minimum 4" clearance to adjacent concrete screws. Substitution of equal concrete screws from a different supplier may have different edge distance and center distance requirements. Concrete screw locations at the corners and may be adjusted to maintain the minimum edge distance to mortar joints. If concrete screw locations noted as "MAX. ON CENTER" must be adjusted to maintain the minimum edge distance to mortar joints, additional concrete screws may be required to ensure the maximum on center dimension is not exceeded.
  - 1/4" ITW concrete screws anchoring frame and/or sill require a minimum 2-1/2" clearance to masonry edges, a 1-1/4" minimum embedment and a minimum 3" clearance to adjacent concrete screws. Substitution of equal concrete screws from a different supplier may have different edge distance and center distance requirements. Concrete screw locations at the corners and mullion may be adjusted to maintain the minimum edge distance to mortar joints. If concrete screw locations noted as "MAX. ON CENTER" must be adjusted to maintain the minimum edge distance to mortar joints, additional concrete screws may be required to ensure the maximum on center dimension is not exceeded.

Documents Prepared By:		R.W. BUILDING CONSULTANTS, INC. P.O. Box 230 Vairico FL 33595 Phone No.: 813.659.9197	
PRODUCT:		TRINITY GLASS INT'L PREMIUM LITE FIBERGLASS	
PART OR ASSEMBLY:		BUCK AND FRAME ANCHORING 2X BUCK MASONRY CONSTRUCTION	
NO.	DATE	BY	REVISIONS
DATE: 5/09/08			
SCALE: N.T.S.			
DWG. BY: YV			
CHK. BY: WWH			
DRAWING NO.:		FL-11165.3	
SHEET 7 OF 10			





