

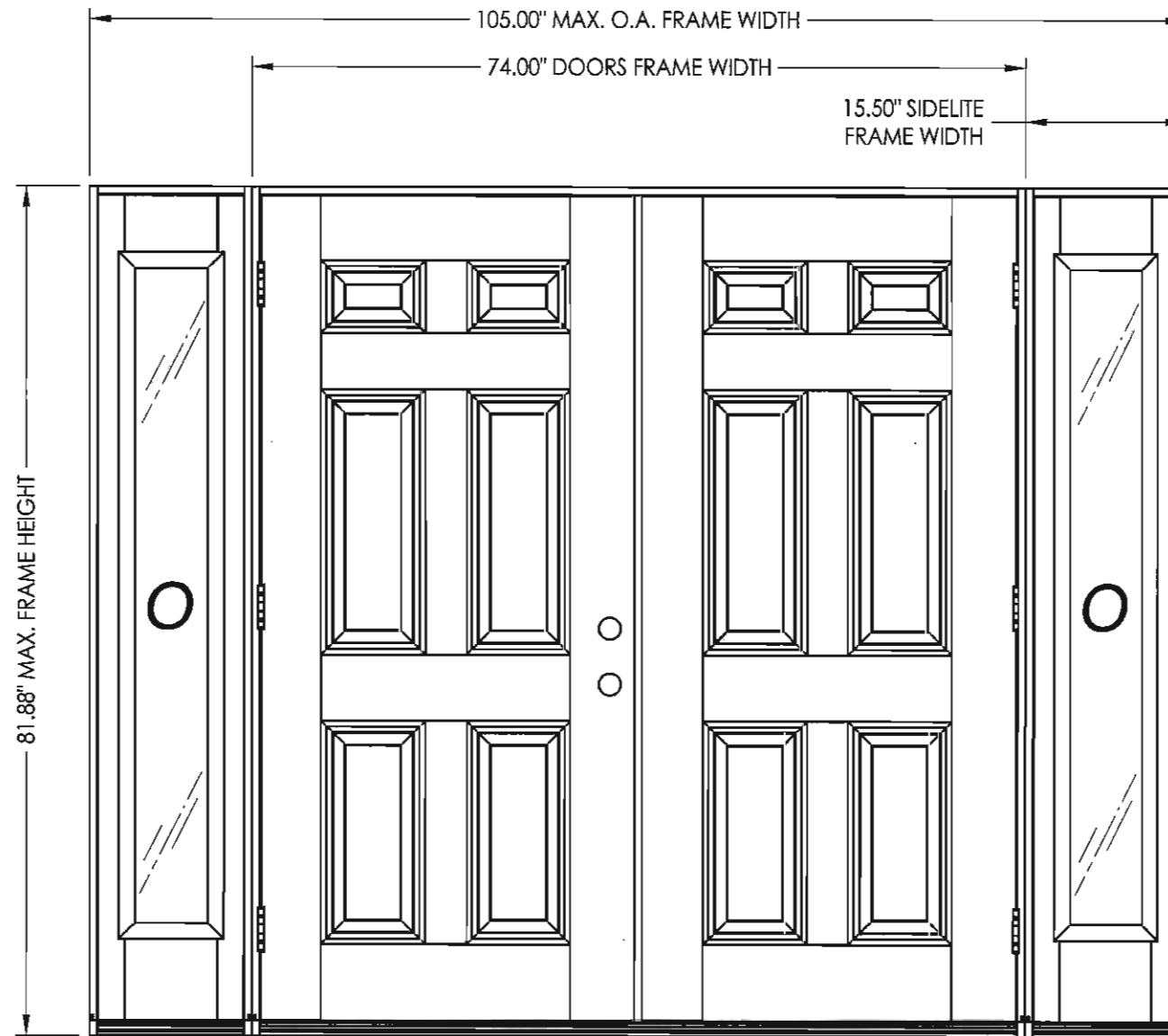


4621 192nd STREET EAST TACOMA, WA 98446

# PREMIUM OPAQUE FIBERGLASS DOOR IN SWING / OUT SWING "NON-IMPACT"

### GENERAL NOTES

1. This product has been evaluated and is in compliance with the 2007 Florida Building Code (FBC) structural requirements including the "High Velocity Hurricane Zone" (HVHZ).
2. Product anchors shall be as listed and spaced as shown on details. Anchor embedment to base material shall be beyond wall dressing or stucco.
3. When used in the "HVHZ" this product is required to be protected with an impact resistant covering that complies with Section 1626 of the 2007 FBC.
4. When used in areas outside of the "HVHZ" requiring wind borne debris protection this product is required to be protected with an impact resistant covering that complies with Section 1609.1.2 of the FBC.
5. For 2x stud framing construction, anchoring of these units shall be the same as that shown for 2x buck masonry construction.
6. Site conditions that deviate from the details of this drawing require further engineering analysis by a licensed engineer or registered architect.
7. Outswing configuration using threshold item #25 meet water infiltration requirements for "HVHZ".
8. Inswing configurations and outswing configuration using threshold item #27 do not meet the water infiltration requirements for the "HVHZ" and shall be installed only in non-habitable areas or at habitable locations protected by an overhang or canopy such that the angle between the edge of canopy or overhang to sill is less than 45 degrees.



DOUBLE with BOXED SIDELITES

TABLE OF CONTENTS	
SHEET #	DESCRIPTION
1	Typical elevations, design pressures & general notes
2	Door panel construction details
3	Sidelite panel construction details & glazing details
4	Horizontal cross sections
5	Vertical cross sections
6	Vertical cross sections
7	Buck anchoring
8	Frame anchoring - 2X buck masonry construction
9	Frame anchoring - 1X buck masonry construction
10	Components
11	Endura astragal details
12	Trinity astragal details
13	PVC astragal details
14	Bill of materials

ASTRAGAL TYPE	SWING	MAX. FRAME DIMENSION	GLASS TYPE	DESIGN PRESSURE (PSF)	
				POSITIVE	NEGATIVE
ENDURA	IN SWING	105.00" x 81.88"	G1	+55.0	-55.0
	OUT SWING	105.00" x 80.75"		+55.0	-55.0
TRC	IN SWING	105.00" x 81.88"	G1	+55.0	-55.0
	OUT SWING	105.00" x 80.75"		+55.0	-55.0
PVC	IN SWING	105.00" x 81.88"	G1	+43.0	-47.0
	OUT SWING	105.00" x 80.75"		+43.0	-43.0

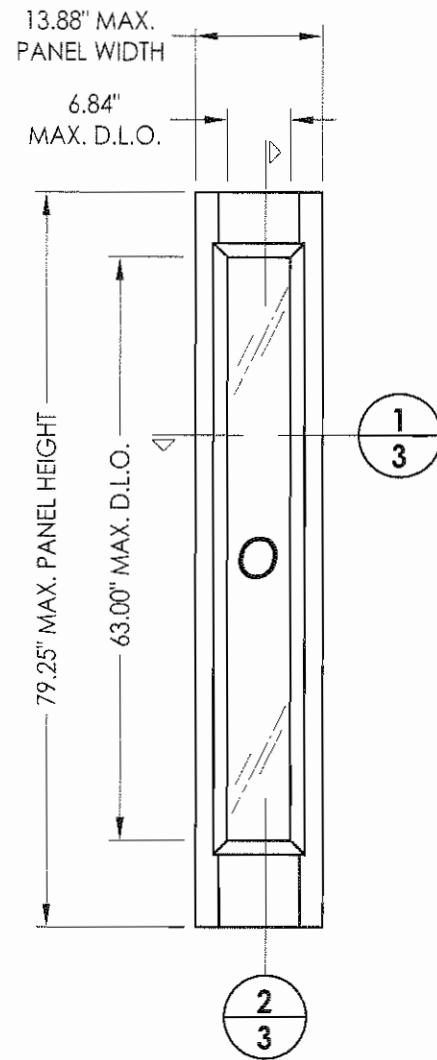
Documents Prepared By:  
**RW** BUILDING CONSULTANTS, INC.  
 P.O. Box 230 Valrico FL 33595  
 Phone No.: 813.659.9197  
 Florida Board of Professional Engineers  
 Certificate Of Authorization No. 9813  
*Wendell W. Haney* 5-1-08  
 Wendell W. Haney, P.E. No. 54158

PRODUCT: TRINITY GLASS INT'L  
 PREMIUM OPAQUE FIBERGLASS  
 PART OR ASSEMBLY:  
 TYPICAL ELEVATION, DESIGN PRESSURES & GENERAL NOTES

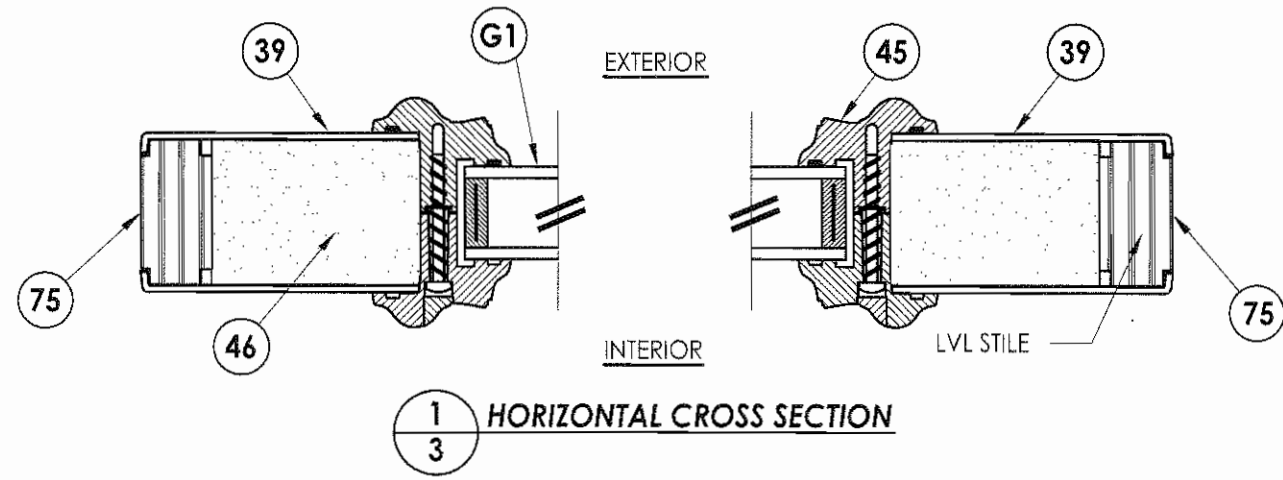
NO.	DATE	BY	REVISIONS

DATE: 5/15/08  
 SCALE: N.T.S.  
 DWG. BY: YV  
 CHK. BY: WWH  
 DRAWING NO.: FL-11165.14  
 SHEET 1 OF 14

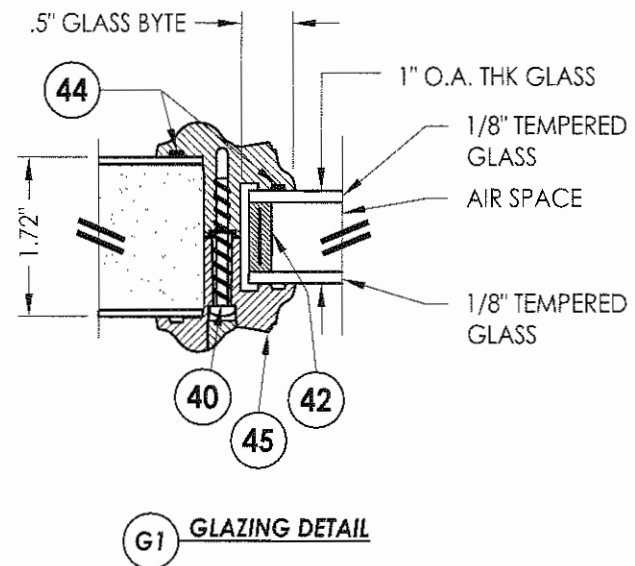




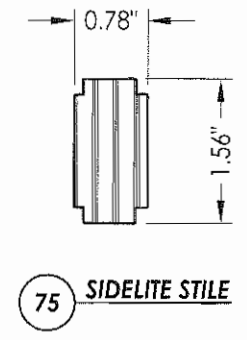
66 PREMIUM LIPLITE FIBERGLASS SIDELITE



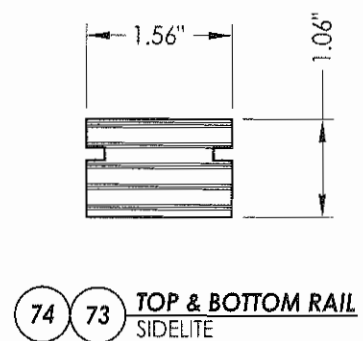
1/3 HORIZONTAL CROSS SECTION



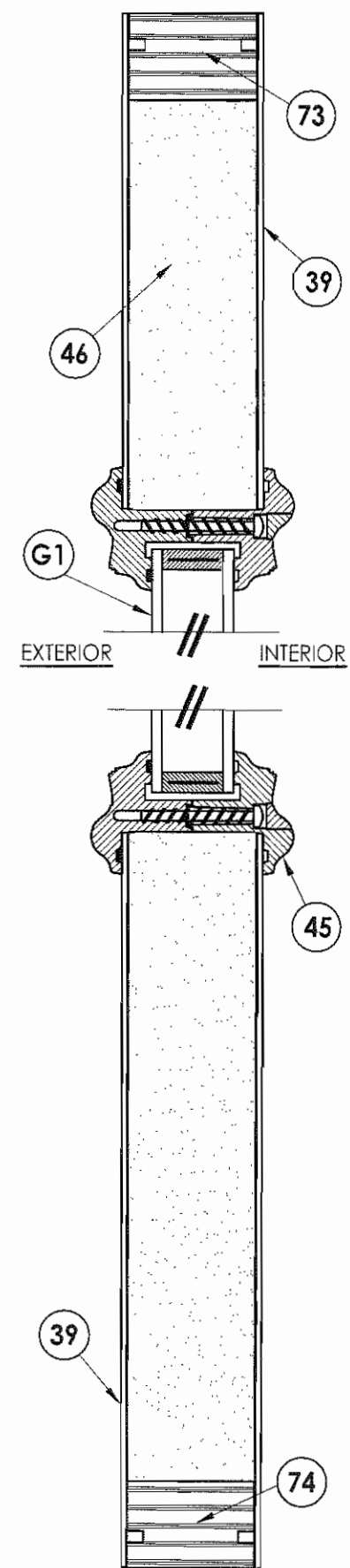
G1 GLAZING DETAIL



75 SIDELITE STILE



74 73 TOP & BOTTOM RAIL SIDELITE

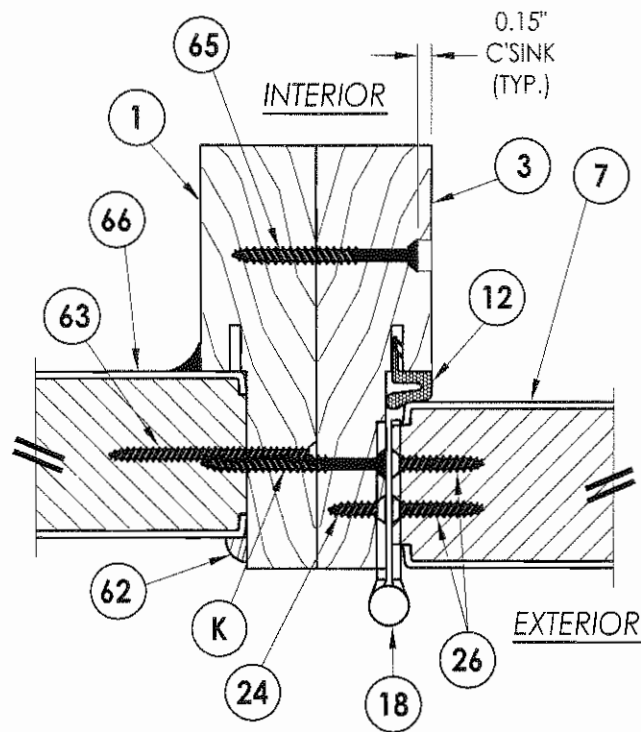


2/3 VERTICAL CROSS SECTION

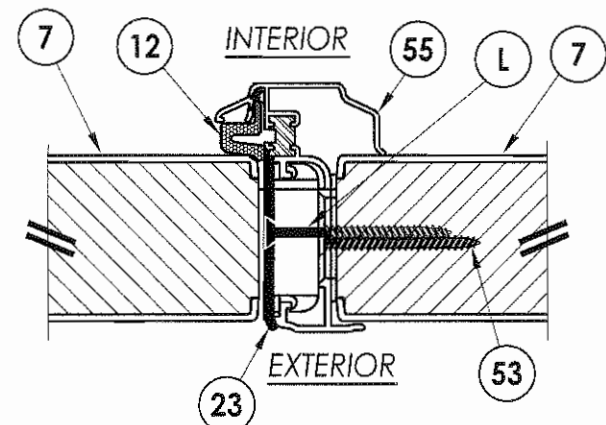
DATE:	5/15/08
SCALE:	N.T.S.
DWG. BY:	YV
CHK. BY:	WWH
DRAWING NO.:	FL-11165.14
SHEET	3 OF 14

PRODUCT:	TRINITY GLASS INT'L PREMIUM OPAQUE FIBERGLASS	
PART OR ASSEMBLY:	SIDELITE PANEL CONSTRUCTION DETAILS AND GLAZING DETAILS	
NO.	DATE	BY
REVISIONS		

Documents Prepared By:  
**RW** BUILDING CONSULTANTS, INC.  
 P.O. Box 230 Valrico FL 33595  
 Phone No.: 813.659.9197  
 Florida Board of Professional Engineers  
 Certificate of Authorization No. 9813  
*Wendell W. Higley* B-1-08  
 Wendell W. Higley P.E. No. 54158

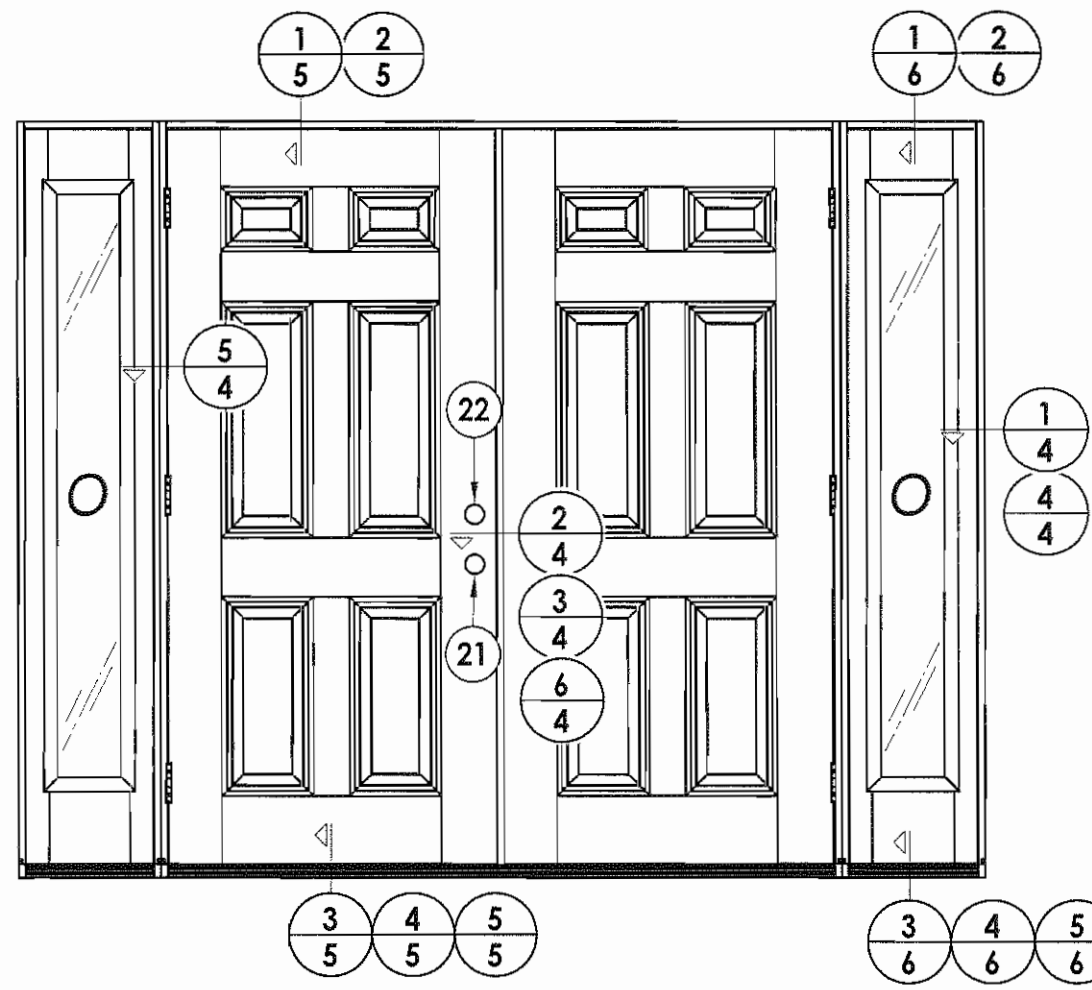


**5** HORIZONTAL CROSS SECTION  
**4** Outswing shown  
 Inswing also approved

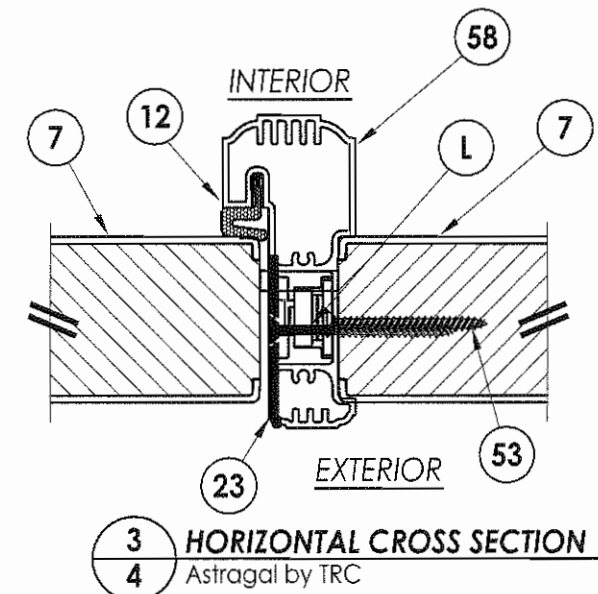


**2** HORIZONTAL CROSS SECTION  
**4** Endura astragal

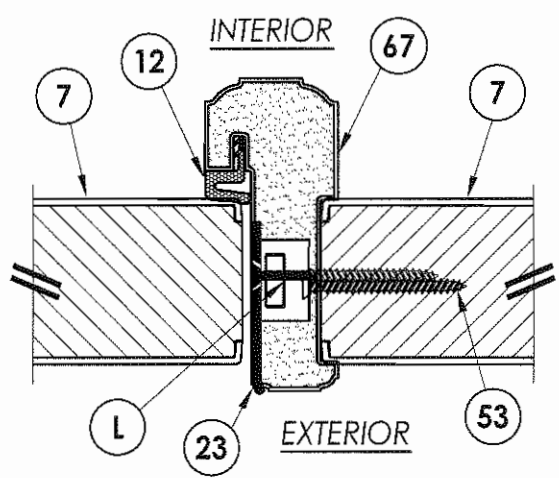
NOTE:  
 1. Sidelite ass'y fastener; 6" from each end and 4 more screws equally spaced between. (6 screws total per jamb.)



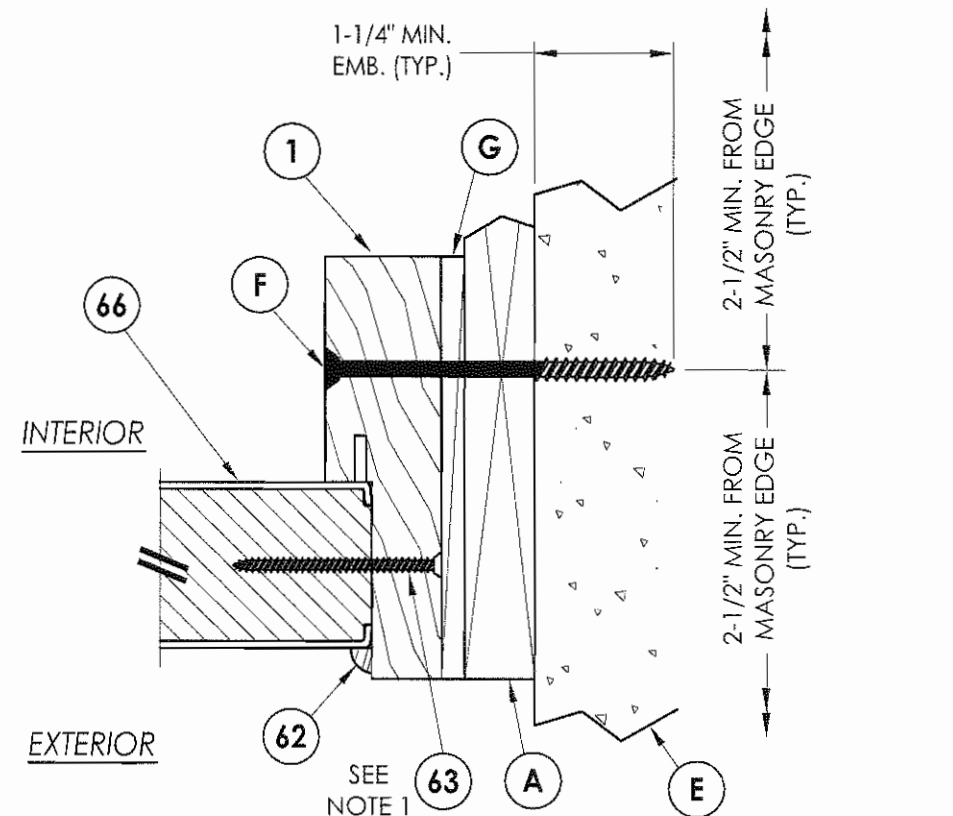
**4** HORIZONTAL CROSS SECTION  
**4** Shown w/1X sub-buck substituting concrete screws for wood screws per Section 1714.5.4.2 of the FBC



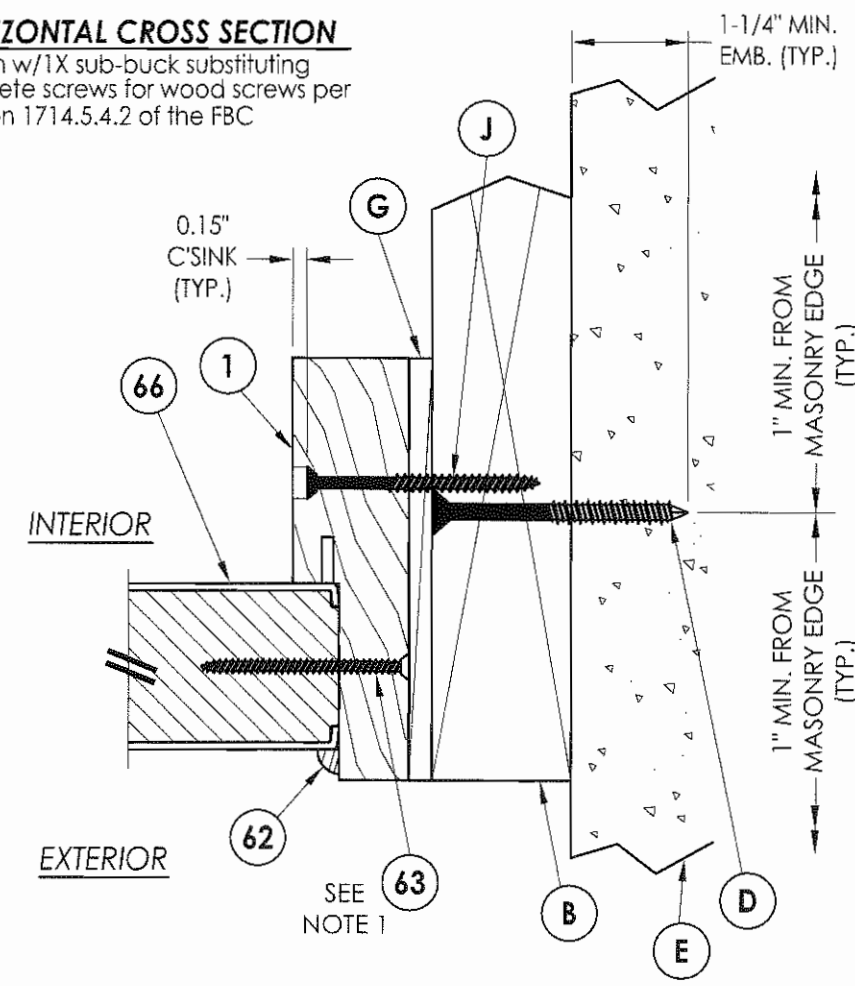
**3** HORIZONTAL CROSS SECTION  
**4** Astragal by TRC



**6** HORIZONTAL CROSS SECTION  
**4** PVC astragal



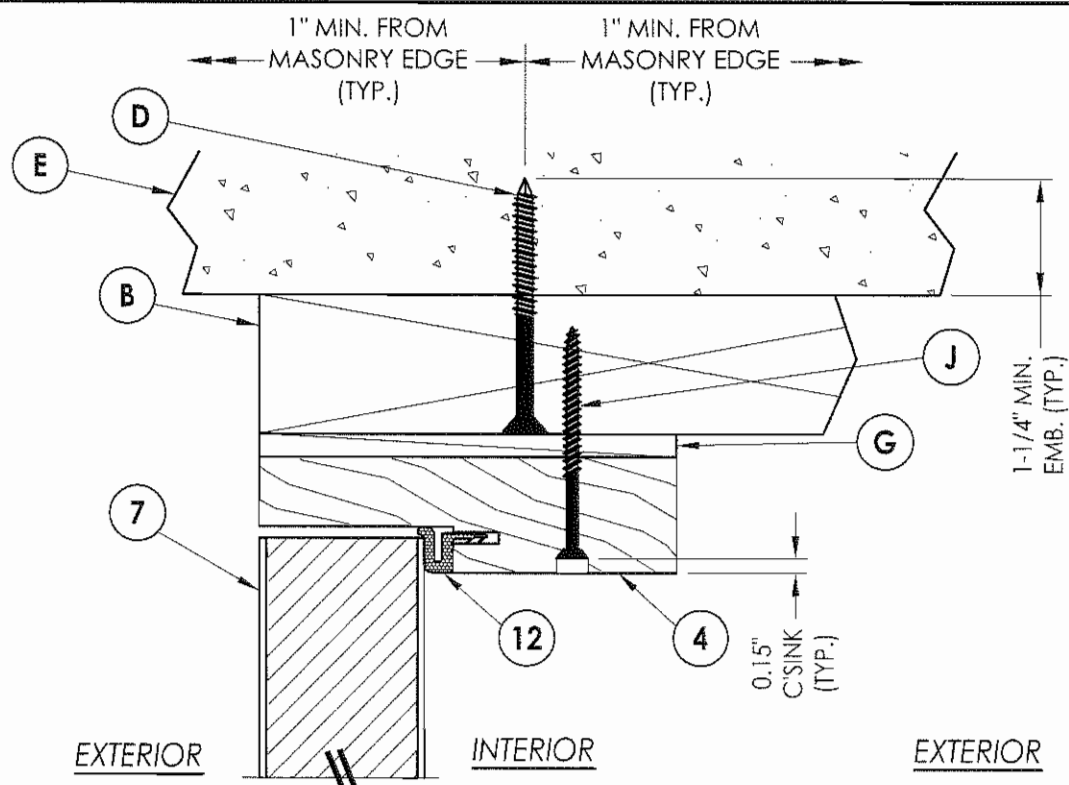
**1** HORIZONTAL CROSS SECTION  
**4** Outswing shown  
 Inswing also approved



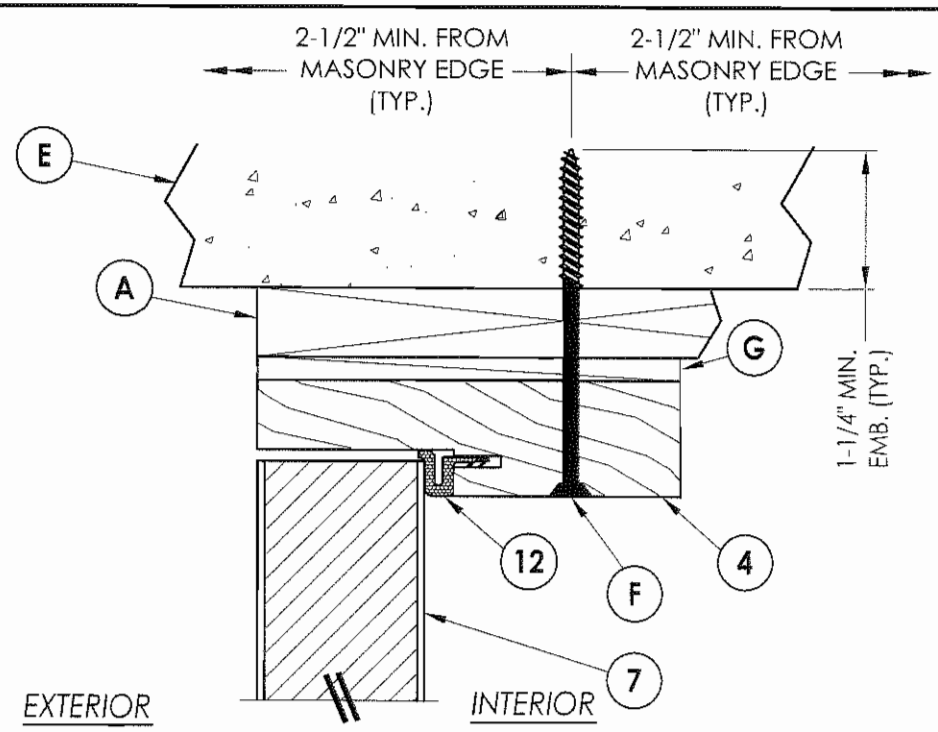
Documents Prepared By:  
**RW** BUILDING CONSULTANTS, INC.  
 P.O. Box 230 Vairico FL 33595  
 Phone No.: 813.659.9197  
 Florida Board of Professional Engineers  
 Certificate Of Authorization No. 9813  
*Wendell W. Hapley, P.E.*  
 No. 54158

PRODUCT:	TRINITY GLASS INT'L PREMIUM OPAQUE FIBERGLASS
PART OR ASSEMBLY:	HORIZONTAL CROSS SECTIONS
NO.	DATE
BY	REVISIONS
DATE:	5/15/08
SCALE:	N.T.S.
DWG. BY:	YV
CHK. BY:	WWH
DRAWING NO.:	FL-11165.14
SHEET	4 OF 14

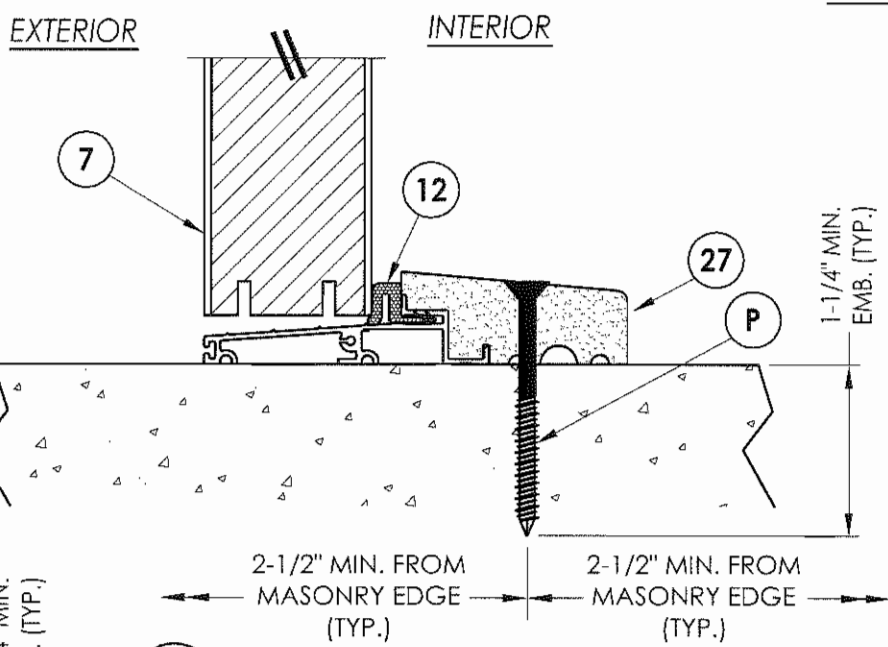
K:\A - Projects\Project Folders\Proj 1101 - 1200\p1122\1.D. RWBC Drawings\FL-11165\FL-11165.8-14.dwg, Model



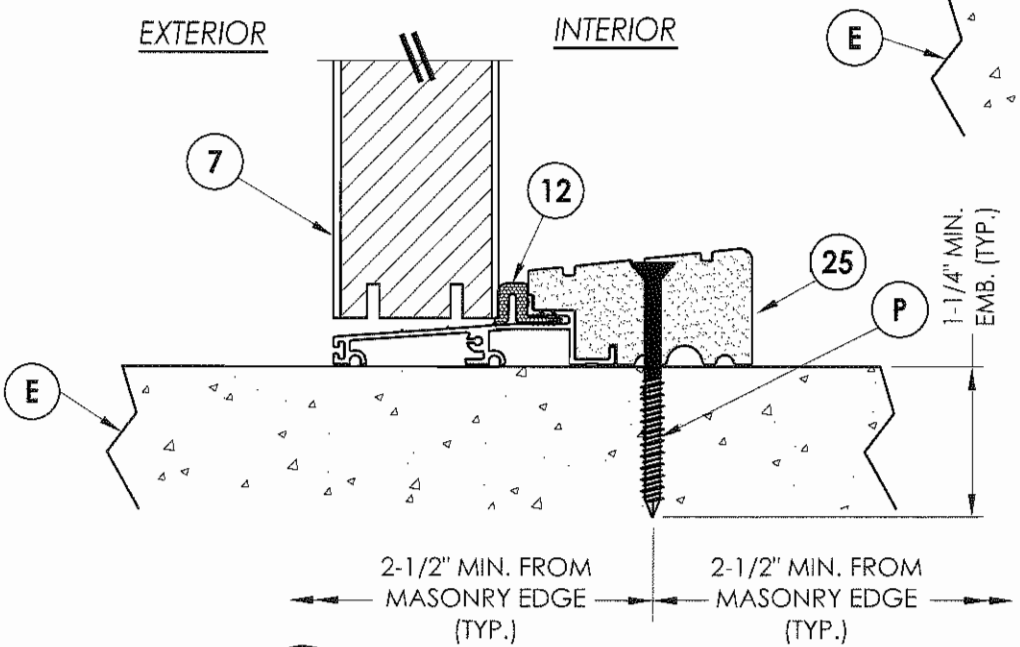
**1 VERTICAL CROSS SECTION**  
**5** Outswing shown  
 Inswing also approved



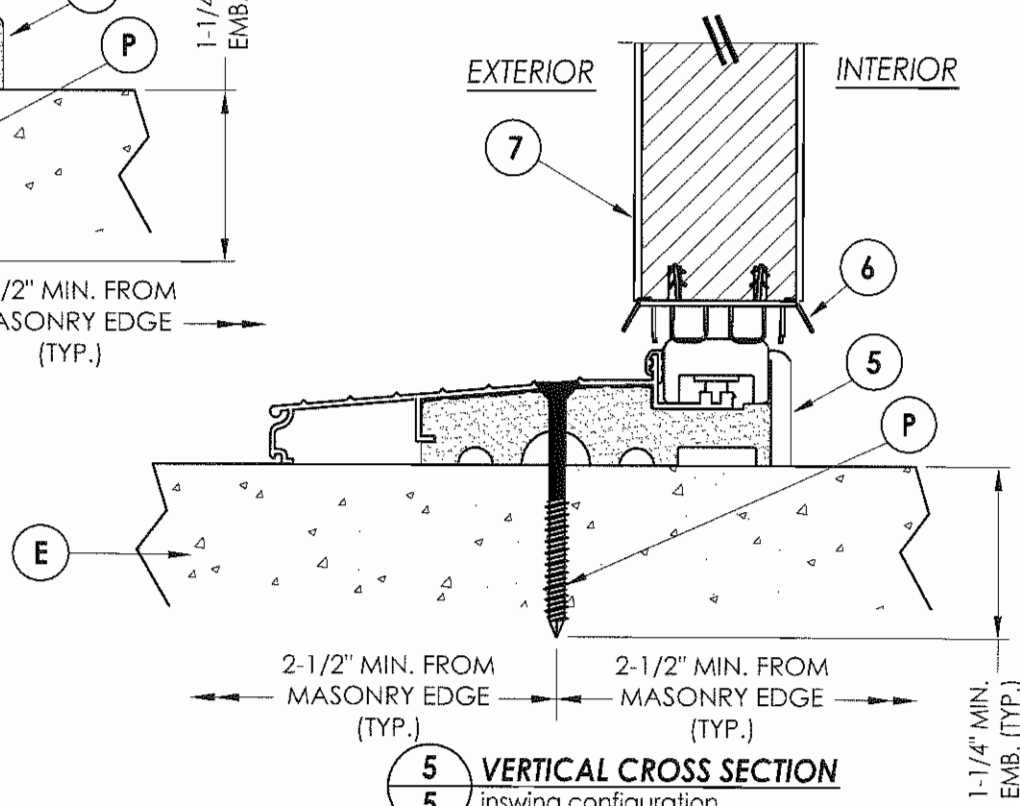
**2 VERTICAL CROSS SECTION**  
**5** Shown w/1X sub-buck substituting  
 concrete screws for wood screws per  
 Section 1714.5.4.2 of the FBC



**4 VERTICAL CROSS SECTION**  
**5** Outswing configuration  
 see general notes, sheet 1  
 for "HVHZ" water infiltration  
 requirements



**3 VERTICAL CROSS SECTION**  
**5** Outswing configuration  
 see general notes, sheet 1  
 for "HVHZ" water infiltration  
 requirements



**5 VERTICAL CROSS SECTION**  
**5** inswing configuration  
 see general notes, sheet 1  
 for "HVHZ" water infiltration  
 requirements

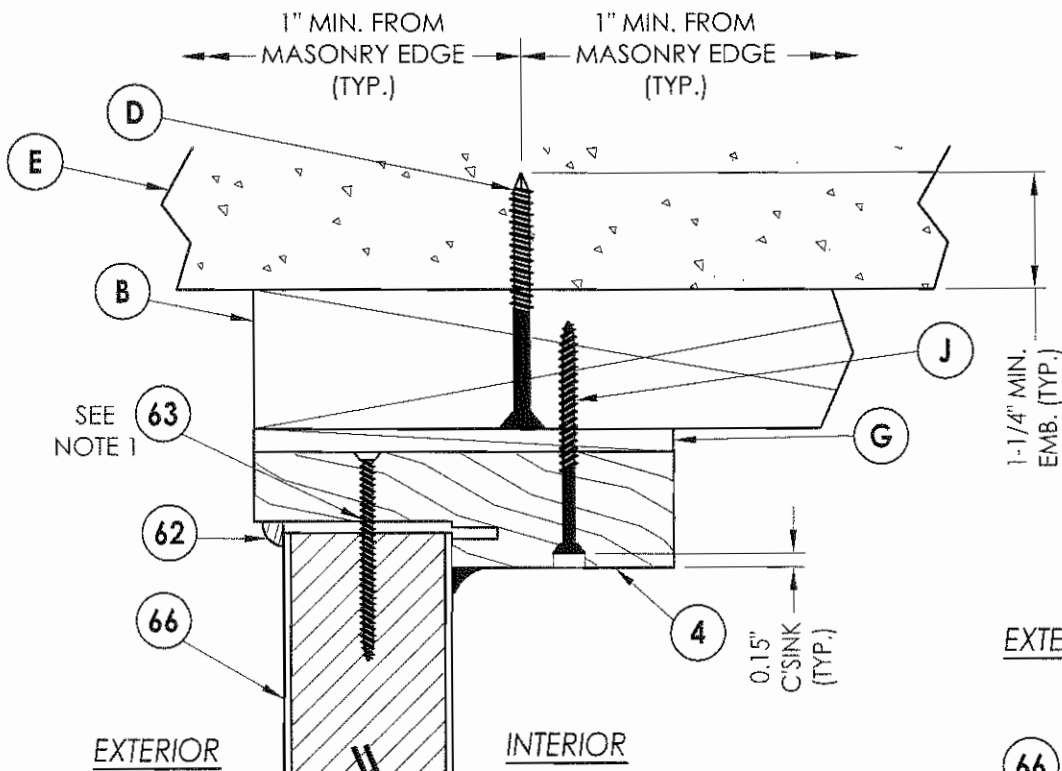
Documents Prepared By:  
**RW** BUILDING CONSULTANTS, INC.  
 P.O. Box 230 Valrico FL 33595  
 Phone No.: 813.659.9197  
 Florida Board of Professional Engineers  
 Certificate Of Authorization No. 9813  
*Wendell W. Haney* B-1-08  
 Wendell W. Haney, P.E. No. 54158

PRODUCT: TRINITY GLASS INT'L PREMIUM OPAQUE FIBERGLASS  
 PART OR ASSEMBLY: VERTICAL CROSS SECTIONS

NO.	DATE	BY	REVISIONS

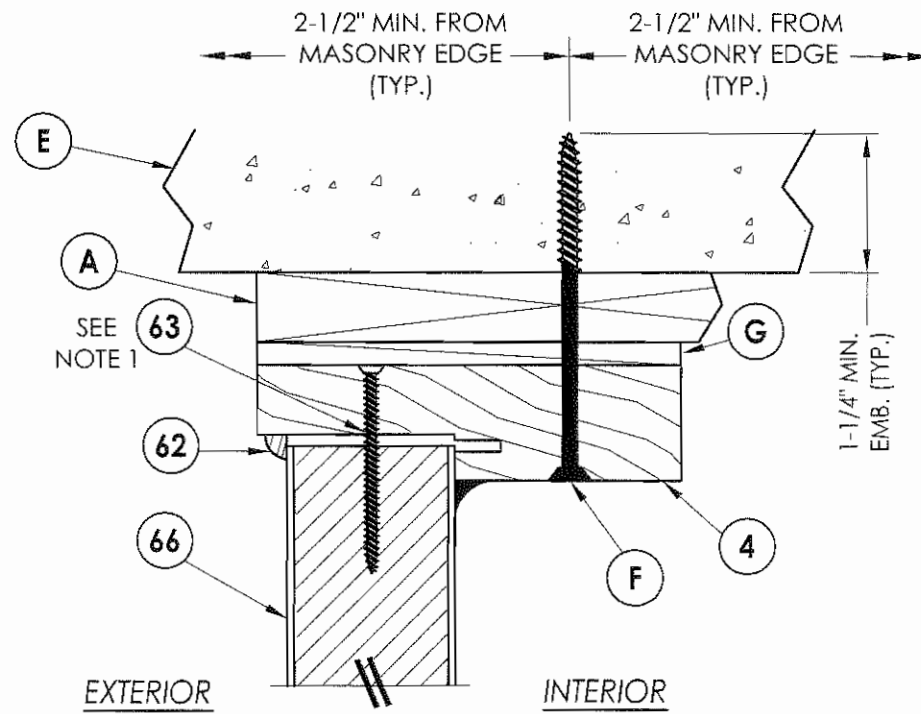
DATE: 5/15/08  
 SCALE: N.T.S.  
 DWG. BY: YV  
 CHK. BY: WWH  
 DRAWING NO.: FL-11165.14  
 SHEET 5 OF 14

© 2008 R.W. BUILDING CONSULTANTS INC.

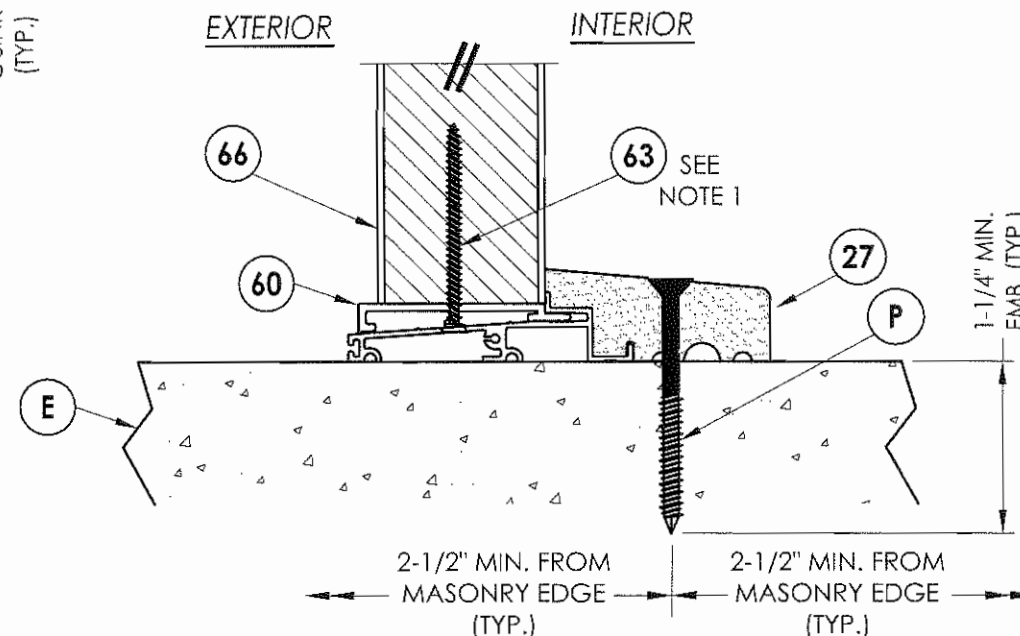


**1 VERTICAL CROSS SECTION**  
6

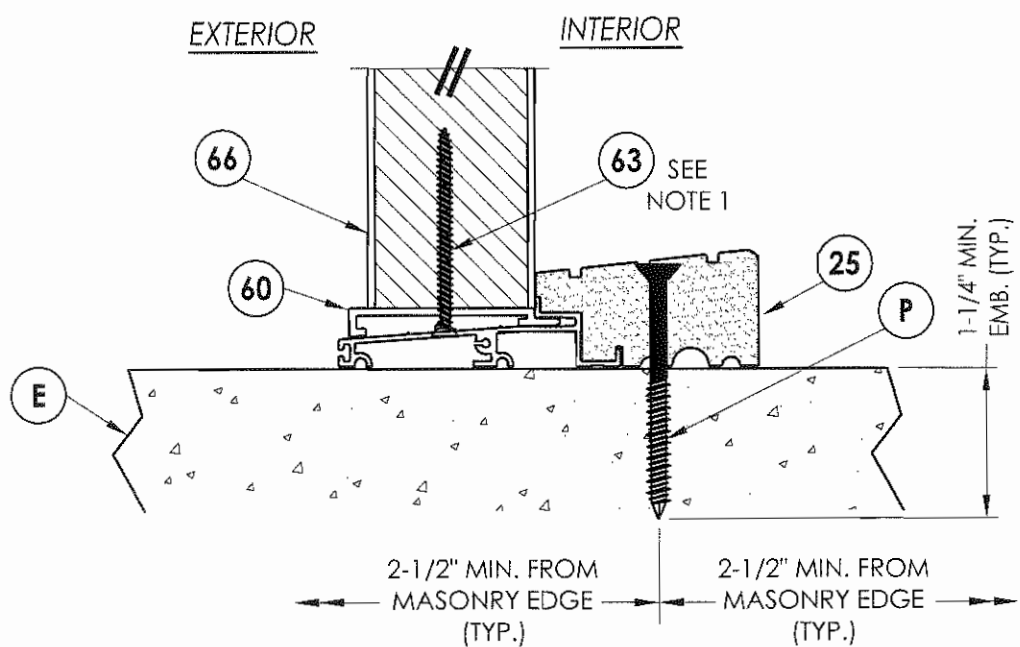
**NOTE:**  
1. Screws thru head and sill jamb located 3" from each end and on center line.



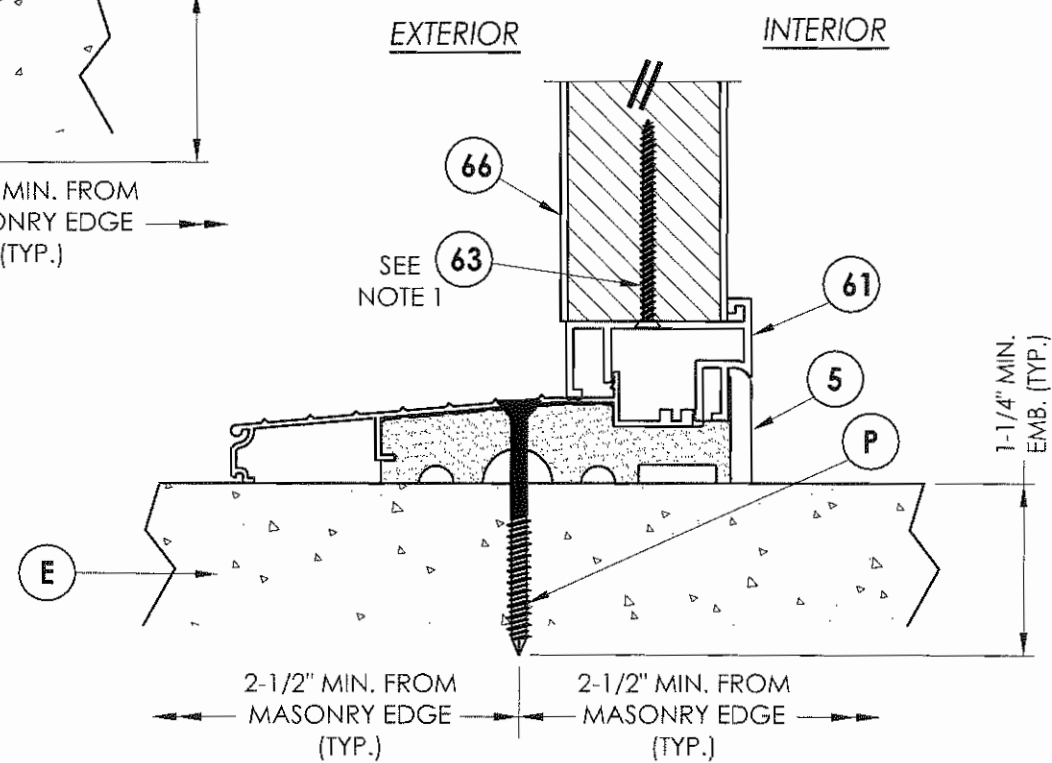
**2 VERTICAL CROSS SECTION**  
6  
Shown w/1X sub-buck substituting concrete screws for wood screws per Section 1714.5.4.2 of the FBC



**4 VERTICAL CROSS SECTION**  
6  
Outswing sill



**3 VERTICAL CROSS SECTION**  
6  
Outswing sill - high dam



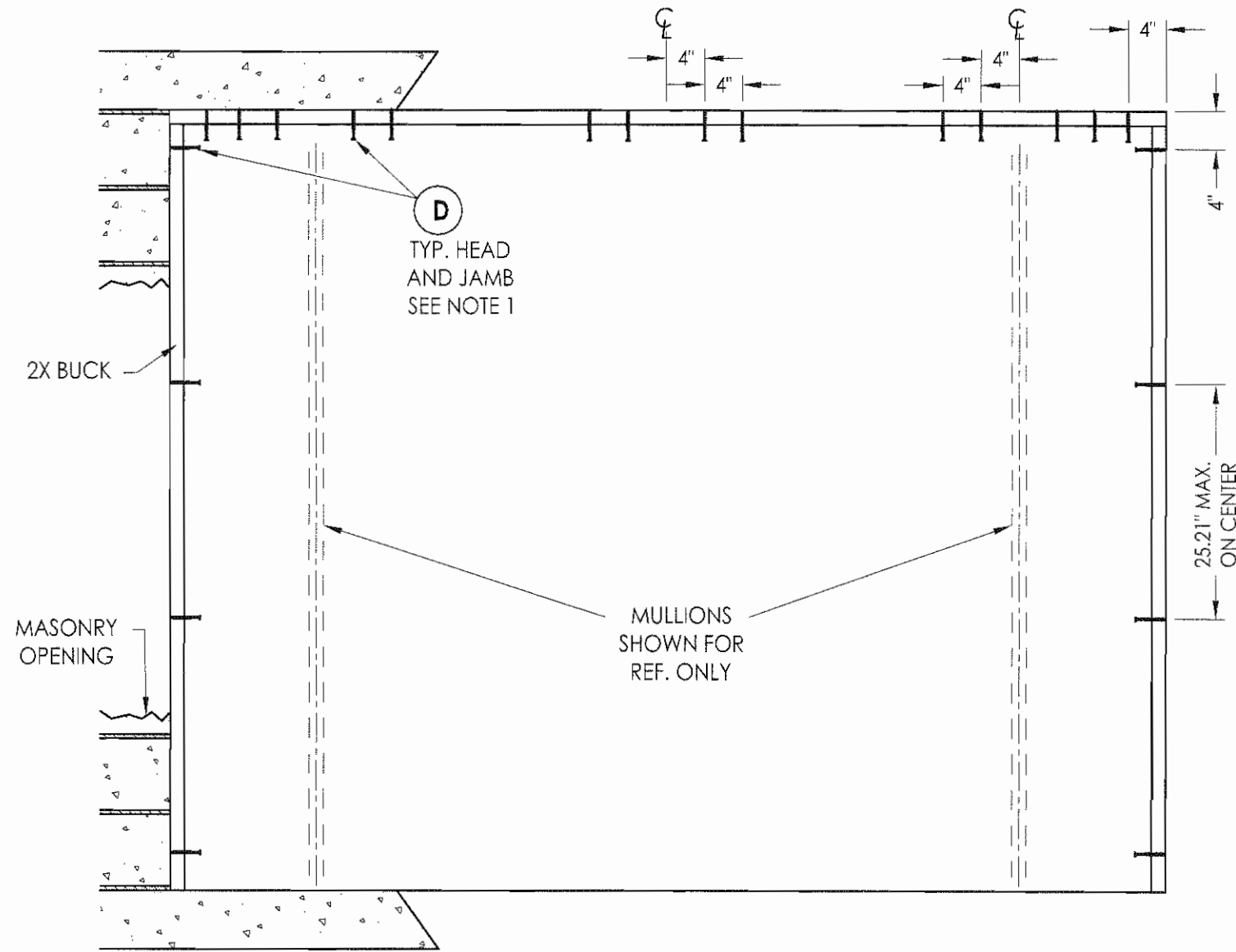
**5 VERTICAL CROSS SECTION**  
6  
Inswing sill

Documents Prepared By:  
**RW** BUILDING CONSULTANTS, INC.  
P.O. Box 230 Vairico FL 33595  
Phone No.: 813.659.9197  
Florida Board of Professional Engineers  
Certificate Of Authorization No. 9813  
*Wendell W. Hines*  
Wendell W. Hines, P.E. No. 54158

PRODUCT: TRINITY GLASS INT'L PREMIUM OPAQUE FIBERGLASS  
PART OR ASSEMBLY: VERTICAL CROSS SECTIONS

NO.	DATE	BY	REVISIONS

DATE: 5/15/08  
SCALE: N.T.S.  
DWG. BY: YV  
CHK. BY: WWH  
DRAWING NO.: FL-11165.14  
SHEET 6 OF 14



D  
TYP. HEAD  
AND JAMB  
SEE NOTE 1

2X BUCK

MASONRY  
OPENING

MULLIONS  
SHOWN FOR  
REF. ONLY

BUCK ANCHORING

25.21" MAX.  
ON CENTER

NOTES:

1. 1/4" Elco Concrete screws anchoring 2x buck require a minimum 1" clearance to masonry edges, a 1-1/4" minimum embedment and a minimum 4" clearance to adjacent concrete screws. Substitution of equal concrete screws from a different supplier may have different edge distance and center distance requirements. Concrete screw locations at the corners, mullion and astragal may be adjusted to maintain the minimum edge distance to mortar joints. If concrete screw locations noted as "MAX. ON CENTER" must be adjusted to maintain the minimum edge distance to mortar joints, additional concrete screws may be required to ensure the maximum on center dimension is not exceeded.

Documents Prepared By:

**RW** BUILDING CONSULTANTS, INC.  
P.O. Box 230 Valrico FL 33595  
Phone No.: 813.659.9197

Florida Board of Professional Engineers  
Certificate Of Authorization No. 9813

*Wendell W. Heney* P.E. No. 54158

PRODUCT:  
TRINITY GLASS INT'L  
PREMIUM OPAQUE FIBERGLASS

PART OR ASSEMBLY:  
BUCK ANCHORING

NO.	DATE	BY	REVISIONS

DATE: 5/15/08

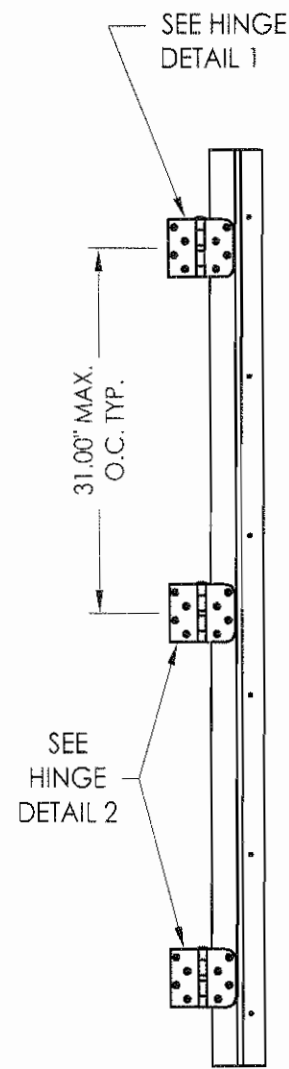
SCALE: N.T.S.

DWG. BY: YV

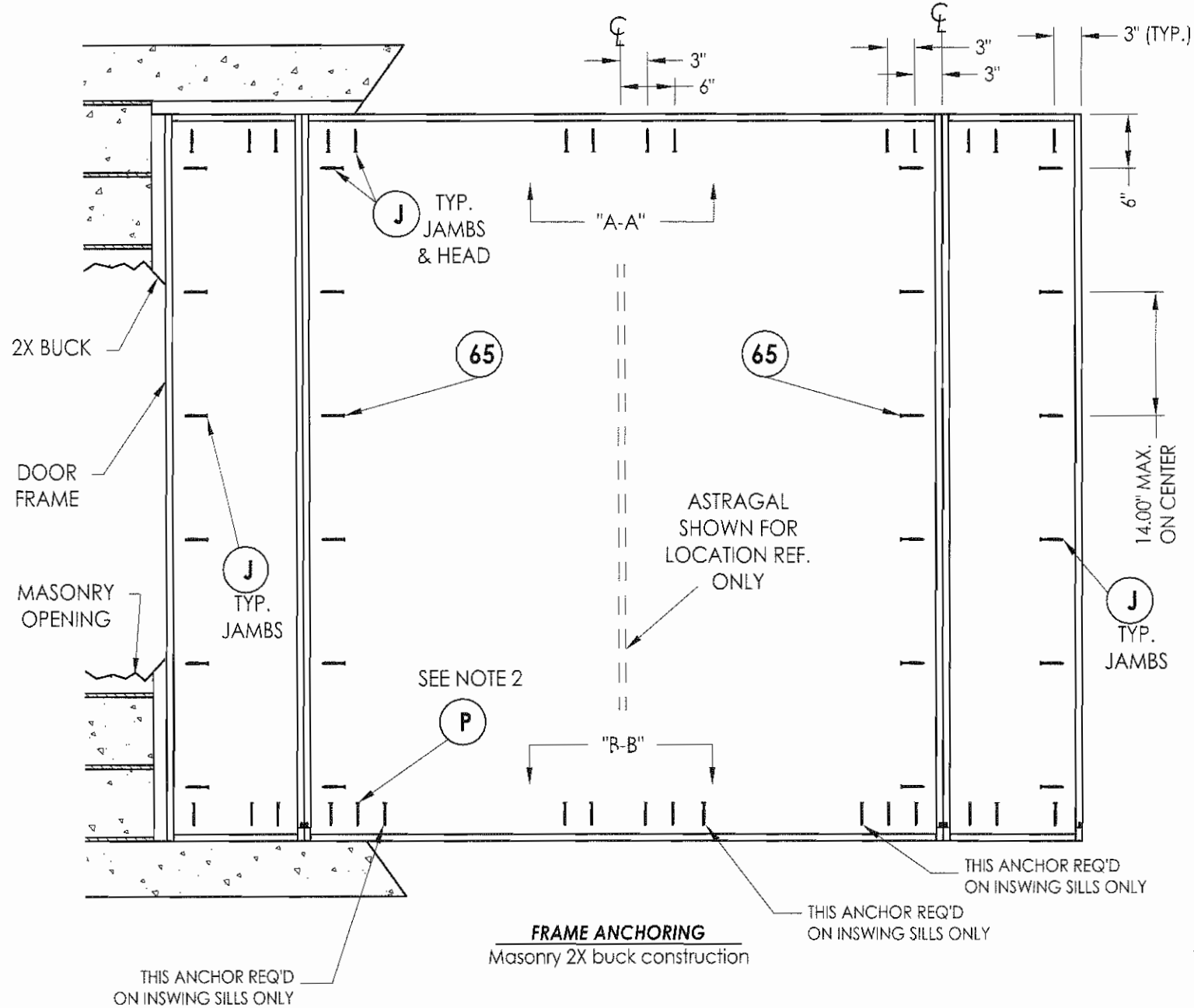
CHK. BY: WWH

DRAWING NO.:  
FL-11165.14

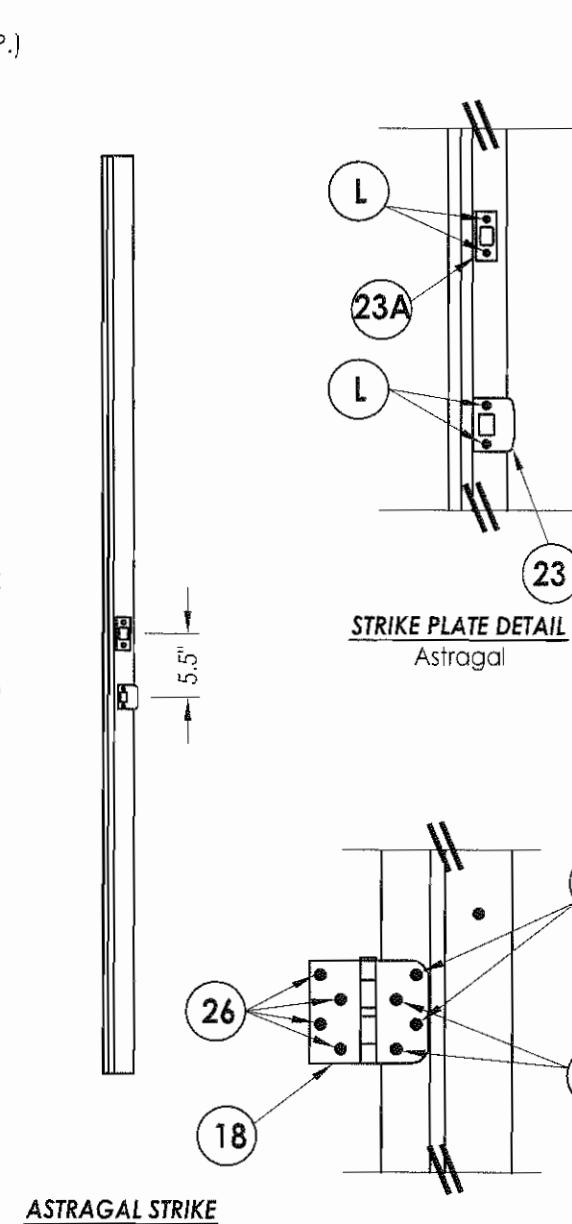
SHEET 7 OF 14



**HINGE JAMB**

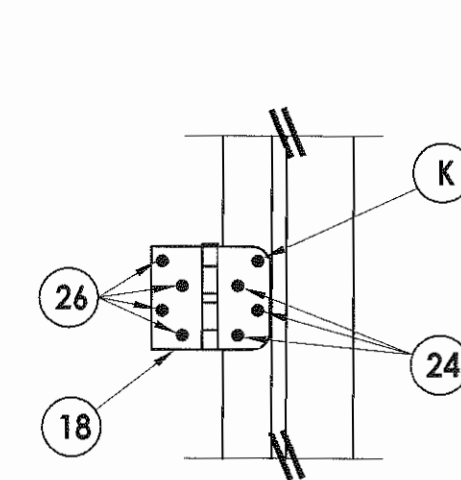


**FRAME ANCHORING**  
Masonry 2X buck construction

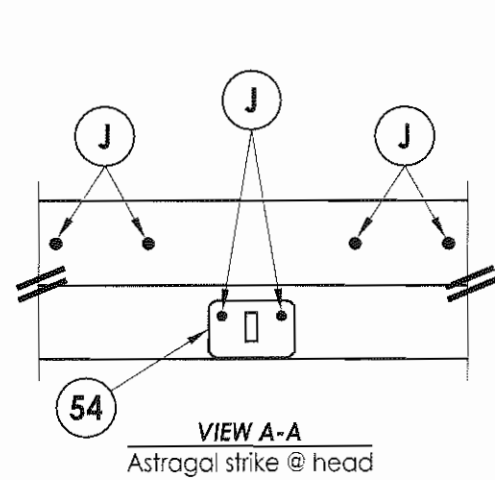


**ASTRAGAL STRIKE**

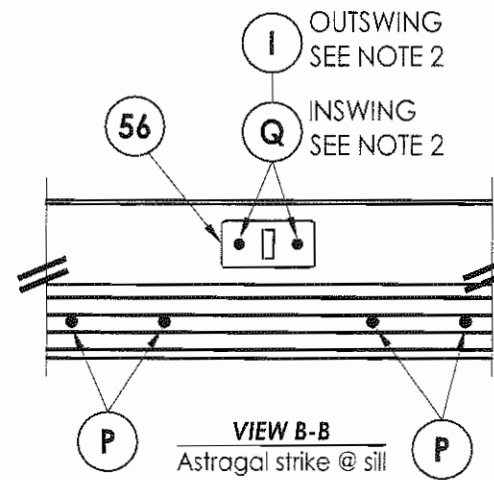
**HINGE DETAIL 1**



**HINGE DETAIL 2**



**VIEW A-A**  
Astragal strike @ head



**VIEW B-B**  
Astragal strike @ sill

**NOTES:**

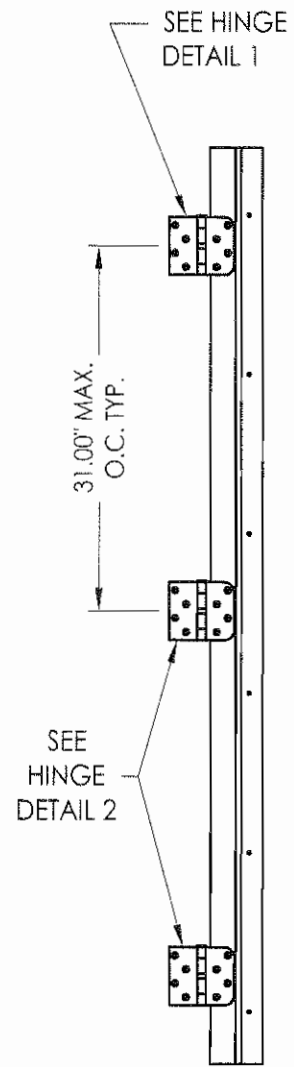
- 1/4" ITW concrete screws anchoring frame and/or sill require a minimum 2-1/2" clearance to masonry edges, a 1-1/4" minimum embedment and a minimum 3" clearance to adjacent concrete screws. Substitution of equal concrete screws from a different supplier may have different edge distance and center distance requirements. Concrete screw locations at the corners, at mullions and at astragal locations may be adjusted to maintain the minimum edge distance to mortar joints. If concrete screw locations noted as "MAX. ON CENTER" must be adjusted to maintain the minimum edge distance to mortar joints, additional concrete screws may be required to ensure the maximum on center dimension is not exceeded.
- 3/16" ITW concrete screws anchoring frame and/or sill require a minimum 2-5/8" clearance to masonry edges, a 1-1/4" minimum embedment and a minimum 2-1/4" clearance to adjacent concrete screws unless otherwise noted by concrete screw manufacturer.

Documents Prepared By:  
**R.W.** BUILDING CONSULTANTS, INC.  
 P.O. Box 230 Valrico FL 33595  
 Phone No.: 813.659.9197  
 Florida Board of Professional Engineers  
 Certificate of Authorization No. 9813  
*Wendell W. Henney, P.E.*  
 No. 5-1-88  
 Wendell W. Henney, P.E. No. 54158

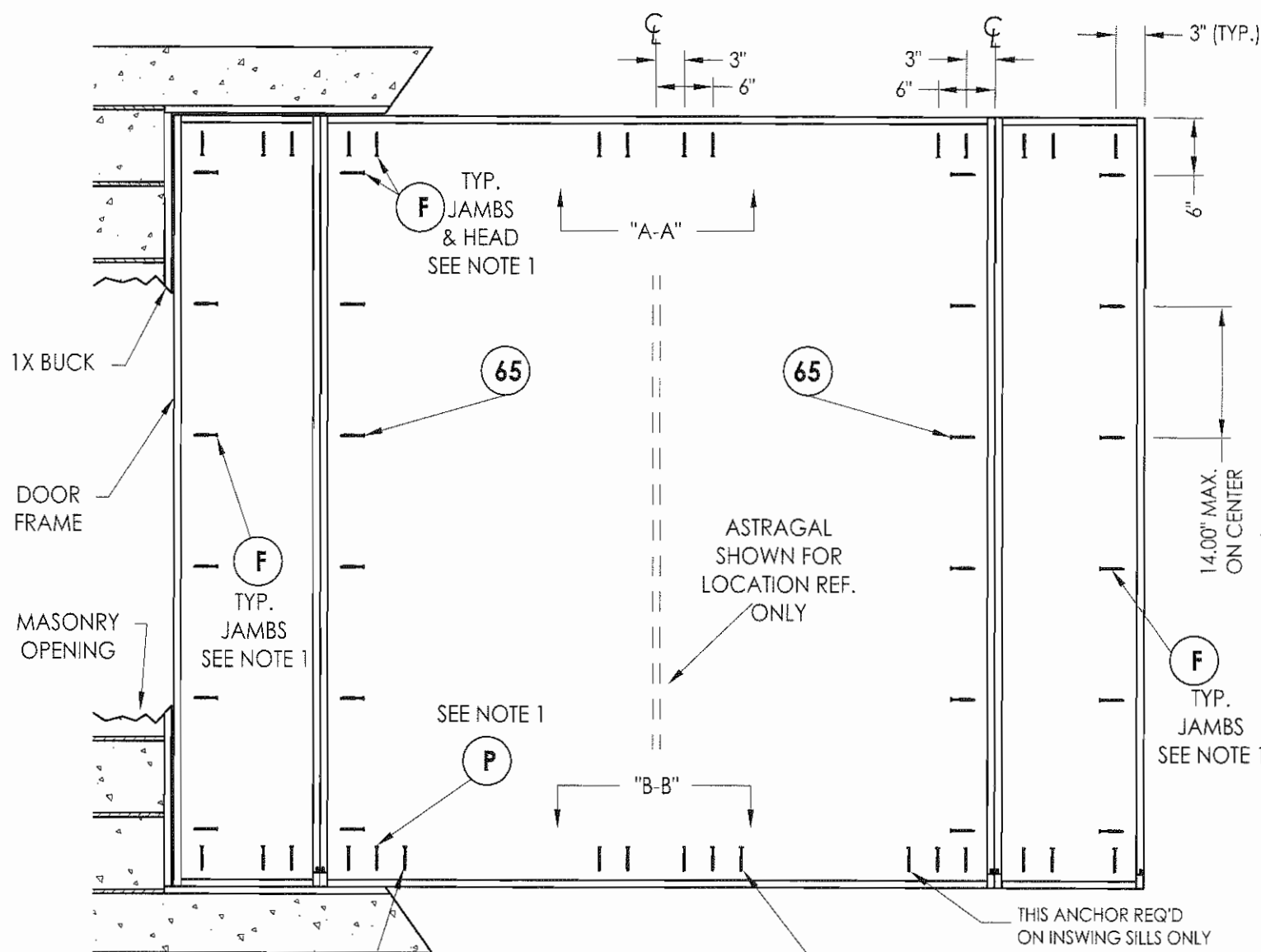
PRODUCT: TRINITY GLASS INT'L PREMIUM OPAQUE FIBERGLASS  
 PART OR ASSEMBLY: FRAME ANCHORING 2X BUCK MASONRY CONSTRUCTION

NO.	DATE	BY	REVISIONS

DATE: 5/15/08  
 SCALE: N.T.S.  
 DWG. BY: YV  
 CHK. BY: WWH  
 DRAWING NO.: FL-11165.14  
 SHEET 8 OF 14

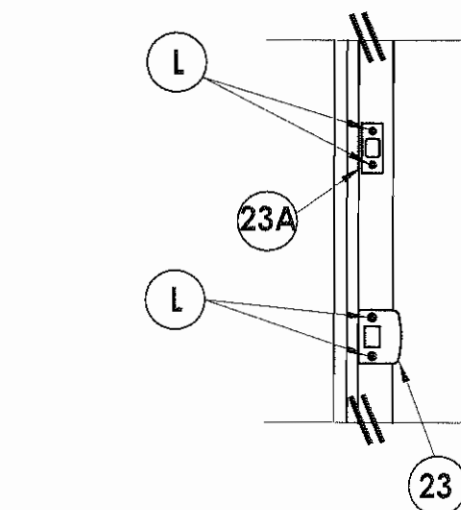


**HINGE JAMB**

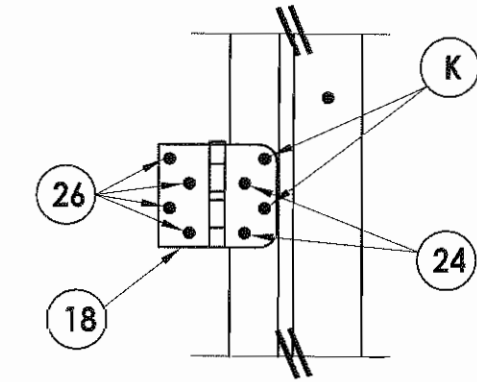


**FRAME ANCHORING**  
Masonry 2X buck construction

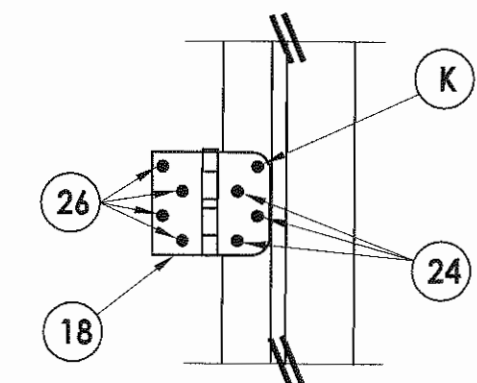
**ASTRAGAL STRIKE**



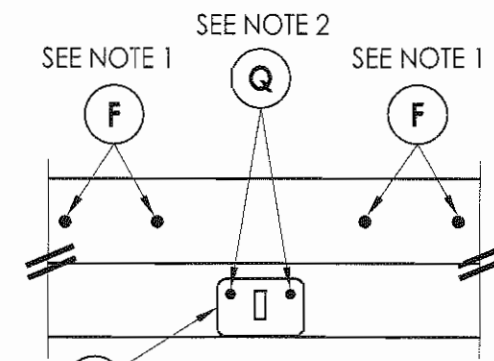
**STRIKE PLATE DETAIL**  
Astragal



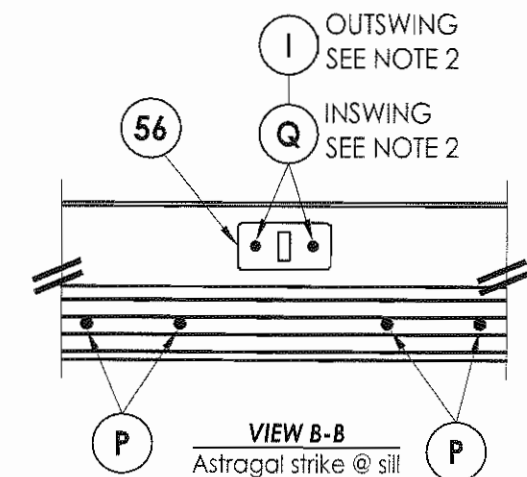
**HINGE DETAIL 1**



**HINGE DETAIL 2**



**VIEW A-A**  
Astragal strike @ head



**VIEW B-B**  
Astragal strike @ sill

**NOTES:**

- 1/4" ITW concrete screws anchoring frame and/or sill require a minimum 2-1/2" clearance to masonry edges, a 1-1/4" minimum embedment and a minimum 3" clearance to adjacent concrete screws. Substitution of equal concrete screws from a different supplier may have different edge distance and center distance requirements. Concrete screw locations at the corners, at mullions and at astragal locations may be adjusted to maintain the minimum edge distance to mortar joints. If concrete screw locations noted as "MAX. ON CENTER" must be adjusted to maintain the minimum edge distance to mortar joints, additional concrete screws may be required to ensure the maximum on center dimension is not exceeded.
- 3/16" ITW concrete screws anchoring frame and/or sill require a minimum 2-5/8" clearance to masonry edges, a 1-1/4" minimum embedment and a minimum 2-1/4" clearance to adjacent concrete screws unless otherwise noted by concrete screw manufacturer.

Documents Prepared By:

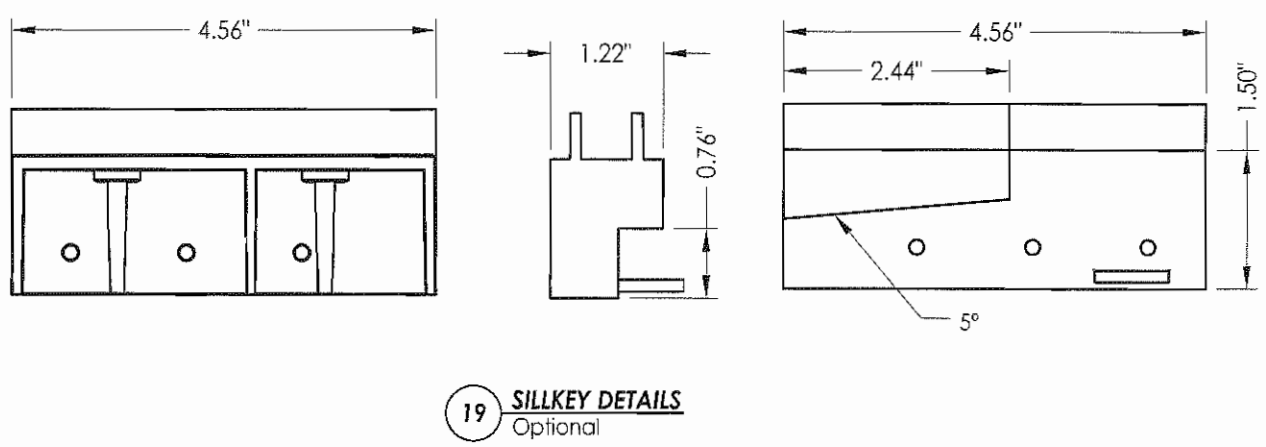
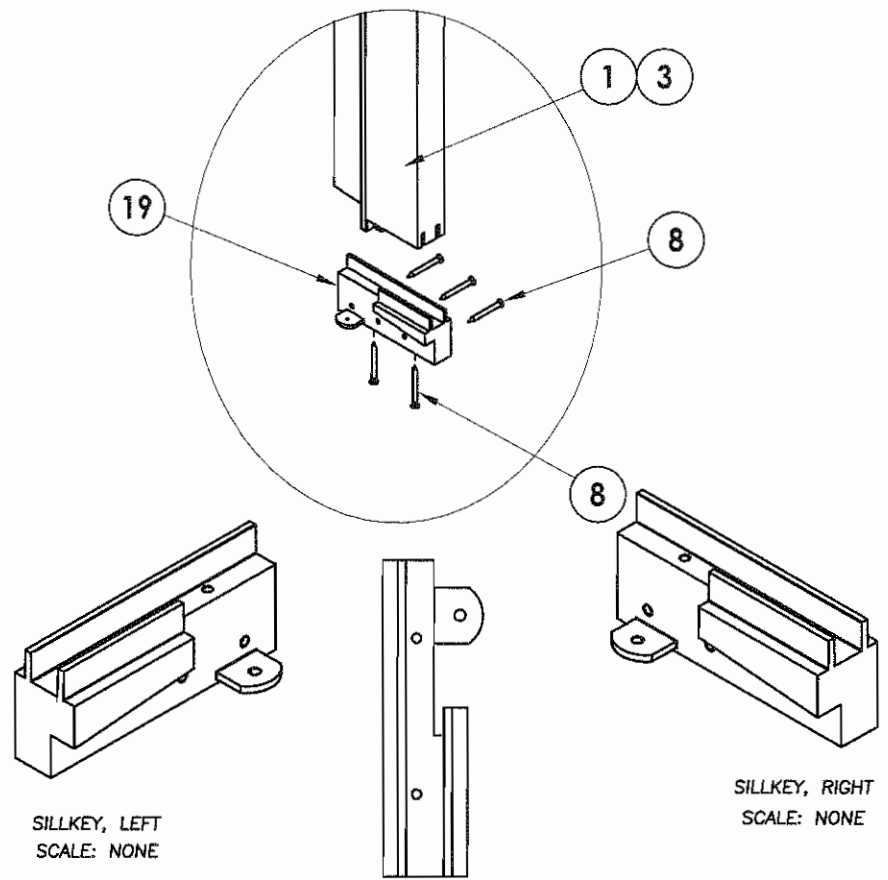
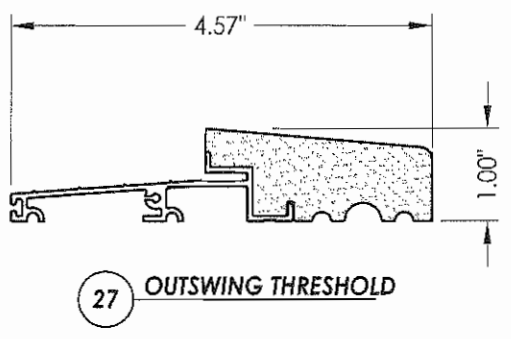
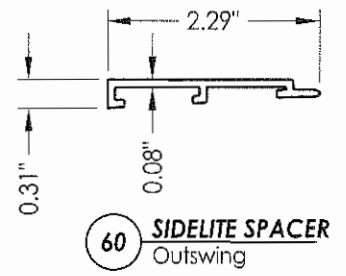
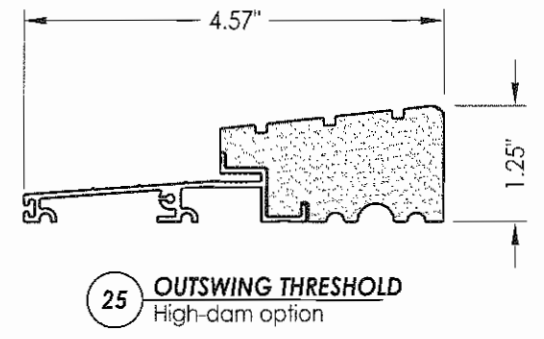
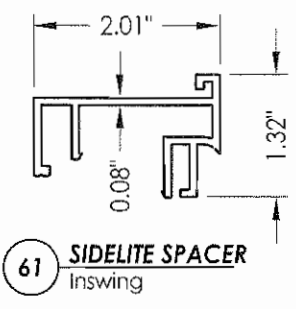
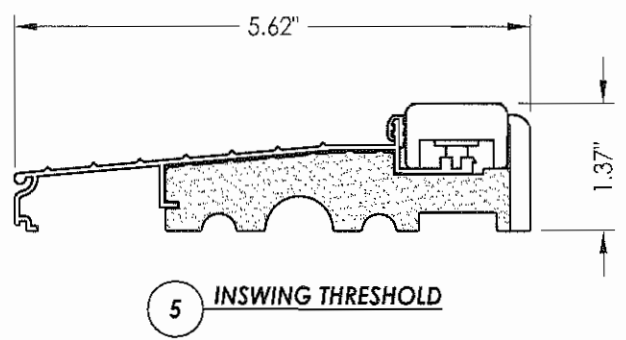
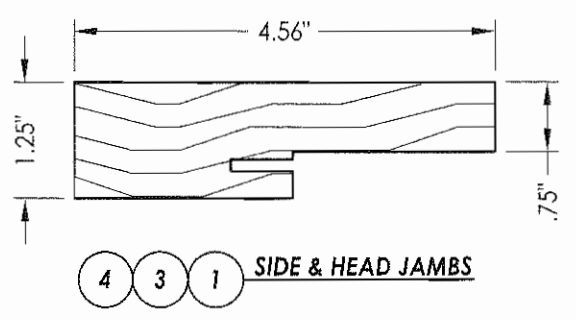
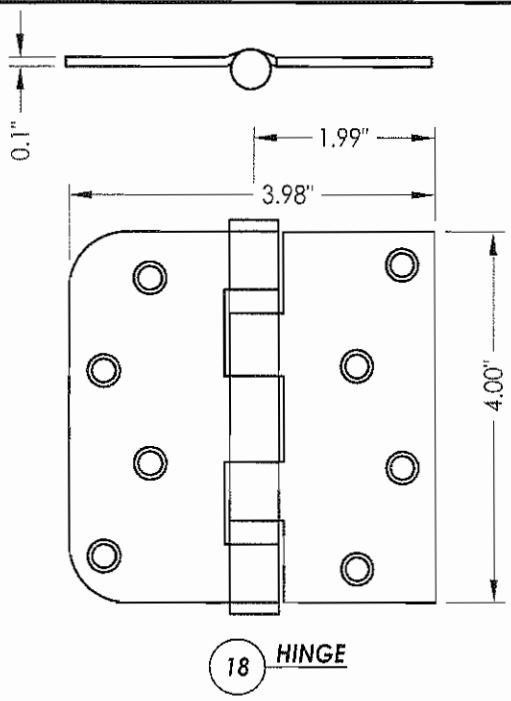
**R.W. BUILDING CONSULTANTS, INC.**  
P.O. Box 230 Vairico FL 33595  
Phone No.: 813.659.9197  
Florida Board of Professional Engineers  
Certificate Of Authorization No. 9813  
*Wendell W. Haney, P.E.*  
Wendell W. Haney, P.E. No. 54158

PRODUCT: TRINITY GLASS INT'L PREMIUM OPAQUE FIBERGLASS  
PART OR ASSEMBLY: FRAME ANCHORING 1X BUCK MASONRY CONSTRUCTION

NO.	DATE	BY	REVISIONS

DATE: 5/15/08  
SCALE: N.T.S.  
DWG. BY: YV  
CHK. BY: WWH  
DRAWING NO.: FL-11165.14  
SHEET 9 OF 14

K:\A - Projects\Project Folders\Proj 1101 - 1200\pt112\ID. RWBC Drawings\FL-11165\FL-11165.8-.14.dwg, Model

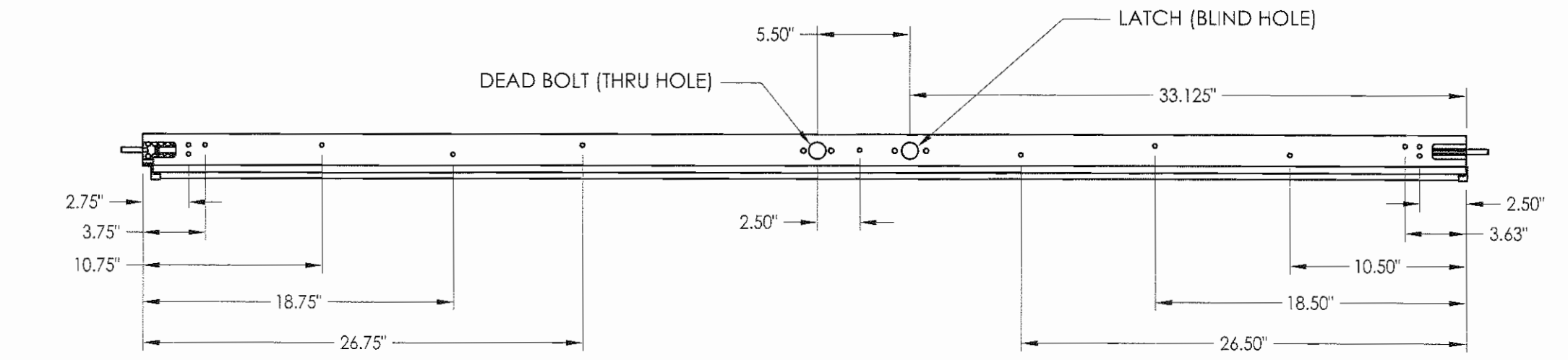


Documents Prepared By:  
**RW** BUILDING CONSULTANTS, INC.  
 P.O. Box 230 Valrico FL, 33595  
 Phone No.: 813.659.9197  
 Florida Board of Professional Engineers  
 Certificate of Authorization No. 9813  
*Wendell W. Hargis* 5-1-08  
 Wendell W. Hargis, P.E. No. 54158

PRODUCT: TRINITY GLASS INT'L PREMIUM OPAQUE FIBERGLASS  
 PART OR ASSEMBLY: COMPONENTS

NO.	DATE	BY	REVISIONS

DATE: 5/15/08  
 SCALE: N.T.S.  
 DWG. BY: YV  
 CHK. BY: WWH  
 DRAWING NO.: FL-11165.14  
 SHEET 10 OF 14



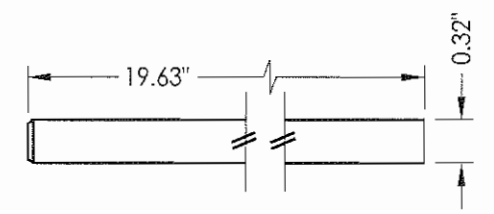
TOP

BOTTOM

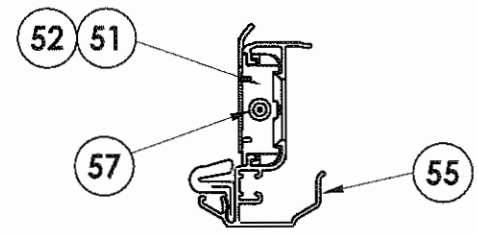


A-A

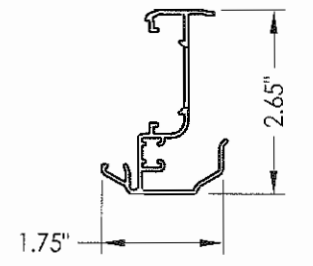
**6'8 ALUMINUM ASTRAGAL ASSEMBLY**  
By Endura Product



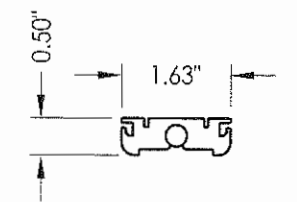
**57 SLIDE BOLT ROD**  
MATL: Steel



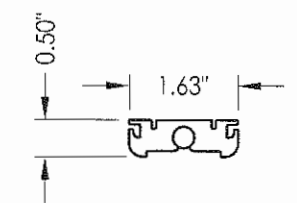
**VIEW A-A**  
Aluminum Astragal Assembly



**55 ALUMINUM ASTRAGAL**  
By Endura Product



**52 TOP BOLT RETAINER**  
MATL: 9-3/4" Long Aluminum



**51 TOP BOLT RETAINER**  
MATL: 4-3/4" Long HDPE

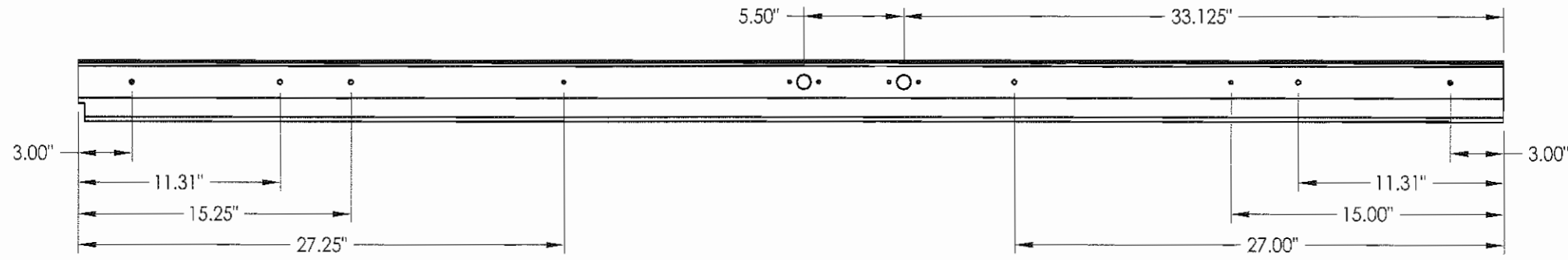
Documents Prepared By:  
**RW** BUILDING CONSULTANTS, INC.  
P.O. Box 230 Valrico FL 33595  
Phone No.: 813.659.9197  
Florida Board of Professional Engineers  
Certificate of Authorization No. 9813  
*Wendell W. Heney* 5-1-08  
Wendell W. Heney, P.E. No. 54158

PRODUCT:  
TRINITY GLASS INT'L  
PREMIUM OPAQUE FIBERGLASS  
PART OR ASSEMBLY:  
ENDURA ASTRAGAL DETAILS

NO.	DATE	BY	REVISIONS

DATE: 5/15/08  
SCALE: N.T.S.  
DWG. BY: YV  
CHK. BY: WWH  
DRAWING NO.: FL-11165.14  
SHEET 11 OF 14

TOP



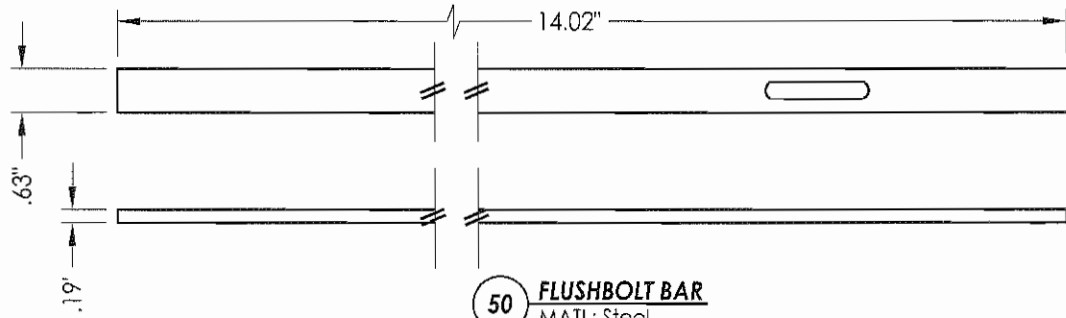
BOTTOM

DEAD BOLT (THRU HOLE) LATCH (THRU HOLE)

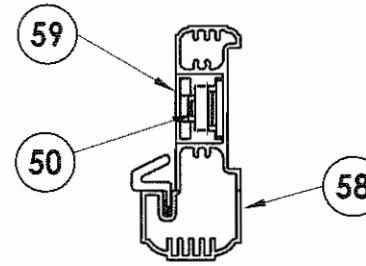


6'8 ALUMINUM ASTRAGAL ASSEMBLY  
By TRC

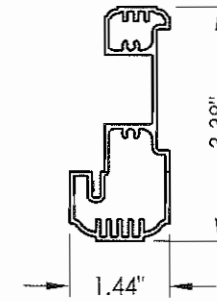
B-B



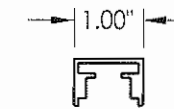
50 FLUSHBOLT BAR  
MATL: Steel



VIEW B-B  
Aluminum Astragal Assembly



58 ALUMINUM ASTRAGAL  
BY TRC



59 ASTRAGAL CHANNEL  
BY TRC

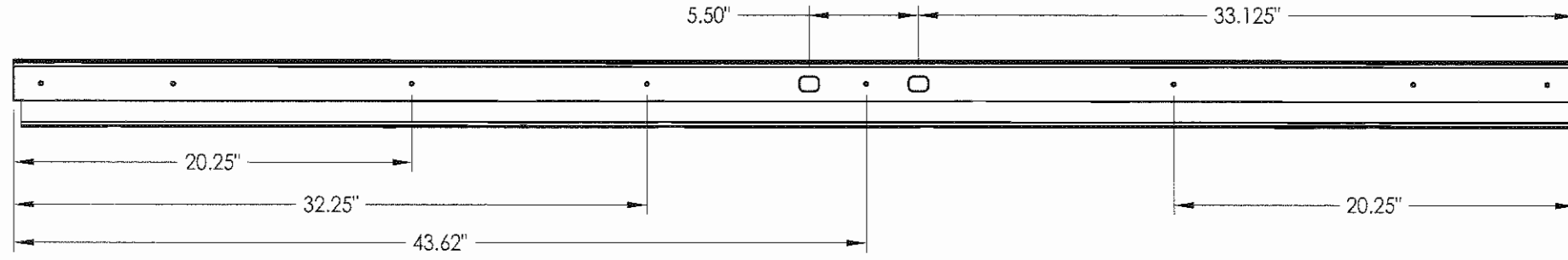
Documents Prepared By:  
**RW** BUILDING CONSULTANTS, INC.  
 P.O. Box 230 Vairico FL. 33595  
 Phone No.: 813.659.9197  
 Florida Board of Professional Engineers  
 Certificate Of Authorization No. 9813  
*Wendell W. Haney* B-1-08  
 Wendell W. Haney, P.E. No. 54158

PRODUCT:  
 TRINITY GLASS INT'L  
 PREMIUM OPAQUE FIBERGLASS  
 PART OR ASSEMBLY:  
 TRINITY ASTRAGAL DETAILS

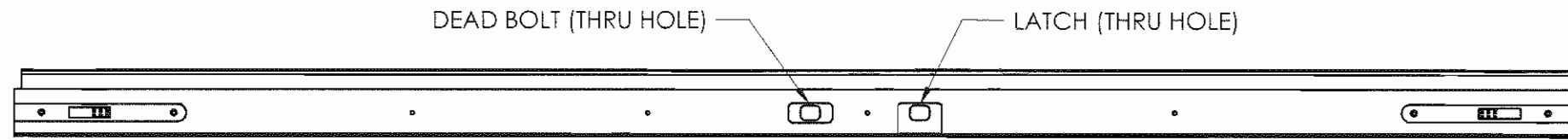
NO.	DATE	BY	REVISIONS

DATE: 5/15/08  
 SCALE: N.T.S.  
 DWG. BY: YV  
 CHK. BY: WWH  
 DRAWING NO.:  
 FL-11165.14  
 SHEET 12 of 14

TOP

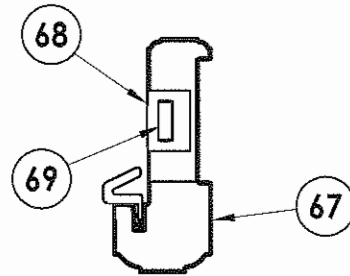


BOTTOM

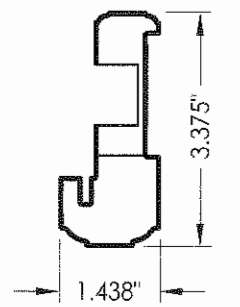


6'8 PVC ASTRAGAL ASSEMBLY  
By TRC

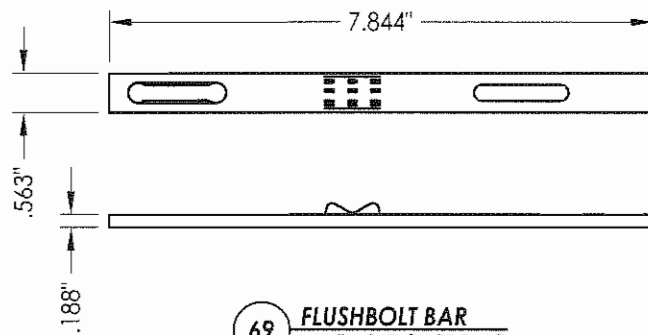
C-C



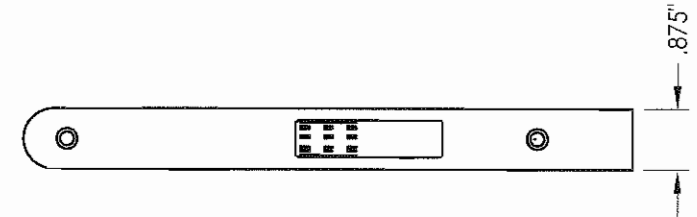
VIEW C-C  
PVC ASTRAGAL ASSEMBLY



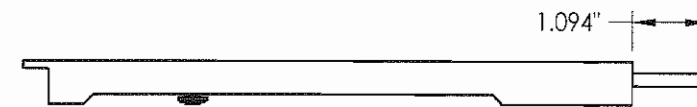
67 PVC ASTRAGAL  
BY TRC



69 FLUSHBOLT BAR  
MATL: DIE CAST ZINC



68 FLUSHBOLT  
MATL: 8.75" DIE CAST ZINC



Documents Prepared By:  
**RW** BUILDING CONSULTANTS, INC.  
 P.O. Box 230 Valrico FL 33595  
 Phone No.: 813.659.9197  
 Florida Board of Professional Engineers  
 Certificate Of Authorization No. 9813  
*Wendell W. Henry*  
 Wendell W. Henry, P.E. No. 54158

PRODUCT:  
 TRINITY GLASS INT'L  
 PREMIUM OPAQUE FIBERGLASS

PART OR ASSEMBLY:  
 PVC ASTRAGAL DETAILS

NO.	DATE	BY	REVISIONS

DATE: 5/09/08  
 SCALE: N.T.S.  
 DWG. BY: YV  
 CHK. BY: WWH  
 DRAWING NO.: FL-11165.14  
 SHEET 13 OF 14

BILL OF MATERIALS			BILL OF MATERIALS		
ITEM	DESCRIPTION	MATERIAL	ITEM	DESCRIPTION	MATERIAL
A	1X BUCK SG >= 0.55	WOOD	39	FIBERGLASS SKIN 0.079" MIN. THICKNESS (Fy = 5,203 PSI MIN.)	FIBERGLASS
B	2X BUCK SG >= 0.55	WOOD	40	#8 X 1-1/8" SELF THREADING SCREW	STEEL
D	1/4" X 2-3/4" ELCO PFH CONCRETE SCREW	STEEL	42	ALUMINUM & BUTYL SPACER SYSTEM	ALUM./BUTYL
E	MASONRY - 3,192 PSI MIN. CONCRETE CONFORMING TO ACI 301 OR HOLLOW BLOCK CONFORMING TO ASTM C90	CONCRETE	44	HOT MELT SEALANT / SILICONE	-
F	1/4" X 3-3/4" ITW PFH CONCRETE SCREW	STEEL	45	LITE FRAME	PC/ASA
G	MAX. 1/4" SHIM SPACE	WOOD	46	FOAM CORE	POLYURETHANE
I	3/16" X 1-3/4" ITW PFH CONCRETE SCREW	STEEL	50	FLUSHBOLT BAR	STEEL
J	#10 X 2-1/2" PFH WS	STEEL	51	4-3/4" LENGTH TOP BOLT RETAINER	HDPE
K	#9 X 2" PFH WS	STEEL	52	9-3/4" LENGTH TOP BOLT RETAINER	ALUMINUM
L	#8 X 2-1/2" PFH WS	STEEL	53	#8 X 1-3/4" FPH SMS	STEEL
P	1/4" X 2-3/4" ITW PFH CONCRETE SCREW	STEEL	54	ASTRAGAL STRIKE @ HEAD	STEEL
Q	3/16" X 3-1/4" ITW CONCRETE SCREW	STEEL	55	ASTRAGAL BY ENDURA PRODUCT	ALUMINUM
1	SIDELITE JAMB - FINGER-JOINT PINE - SG >= 0.42	WOOD	56	ASTRAGAL STRIKE @ SILL	STEEL
3	HINGE JAMB - FINGER-JOINT PINE - SG >= 0.42	WOOD	57	SLIDE BOLT ROD	STEEL
4	HEAD - FINGER-JOINT PINE - SG >= 0.42	WOOD	58	ASTRAGAL BY TRC	ALUMINUM
5	INSWING THRESHOLD ALUMINUM W/ COMPOSITE SUBSTRATE	ALUMINUM	59	ASTRAGAL CHANNEL BY TRC	ALUMINUM
6	DOOR BOTTOM SWEEP	PVC	60	SIDELITE SPACER - OUTSWING	PVC
7	DOOR PANEL - SEE DOOR PANEL DETAIL SHEET FOR CONSTRUCTION DETAILS	-	61	SIDELITE SPACER - INSWING	PVC
8	#6 X 1-1/4" PFH DRYWALL SCREW	STEEL	62	QUARTER ROUND	WOOD
12	WEATHER STRIP QEBD650 Q-LON	-	63	#8 X 2-1/4" PFH SCREW	STEEL
18	3.983" X 4.0" HINGE MIN 0.098" THICK	STEEL	65	#10 X 2" PFH SCREW	STEEL
19	SILLKEY	PC/ASA	66	SIDELITE PANEL - SEE SIDELITE PANEL DETAIL SHEET FOR CONSTRUCTION DETAILS	-
21	KWIKSET LOCK -SERIES 200 PASSAGE	STEEL	67	PVC ASTRAGAL BY TRC	PVC
22	KWIKSET DEADBOLT -SERIES 600	STEEL	68	ASTRAGAL CHANNEL BY TRC	DIE CAST ZINC
23	STRIKE PLATE	STEEL	69	#8 X 2" PFH SCREW	DIE CAST ZINC
23A	DEADBOLT PLATE	STEEL	73	LVL SIDELITE TOP RAIL (FULL LITE)	POPLAR
24	#9 X 5/8" PFH SCREW	STEEL	74	LVL SIDELITE BOTTOM RAIL (FULL LITE)	POPLAR
25	OUTSWING HIGH-DAM THRESHOLD ALUMINUM W/ COMPOSITE SUBSTRATE	ALUM./ COMP.	75	LVL SIDELITE STILE (FULL LITE)	POPLAR
26	#9 X 1" PFH SCREW	STEEL			
27	OUTSWING THRESHOLD ALUMINUM W/ COMPOSITE SUBSTRATE	ALUM./ COMP.			
30	LATCH STILE - SG >= 0.42	LVL/PVC			
31	LVL LOCK BLOCK	POPLAR			
32	HINGE STILE - SG >= 0.42	LVL/PVC			
33	TOP RAIL - POPLAR LVL & WPC COMBINATION	POPLAR/WPC			
34	BOTTOM RAIL - POPLAR LVL & WPC COMBINATION	POPLAR/WPC			

Documents Prepared By:  
**RW** BUILDING CONSULTANTS, INC.  
P.O. Box 230 Valrico FL 33595  
Phone No.: 813.659.9197  
Florida Board of Professional Engineers  
Certificate of Authorization No. 9813  
*Wendell W. Hargreaves* 5-1-08  
Wendell W. Hargreaves, P.E. No. 54158

PRODUCT:  
TRINITY GLASS INT'L  
PREMIUM OPAQUE FIBERGLASS

PART OR ASSEMBLY:  
BILL OF MATERIALS

NO.	DATE	BY	REVISIONS

DATE: 5/15/08  
SCALE: N.T.S.  
DWG. BY: YV  
CHK. BY: WWH  
DRAWING NO.:  
FL-11165.14  
SHEET 14 OF 14