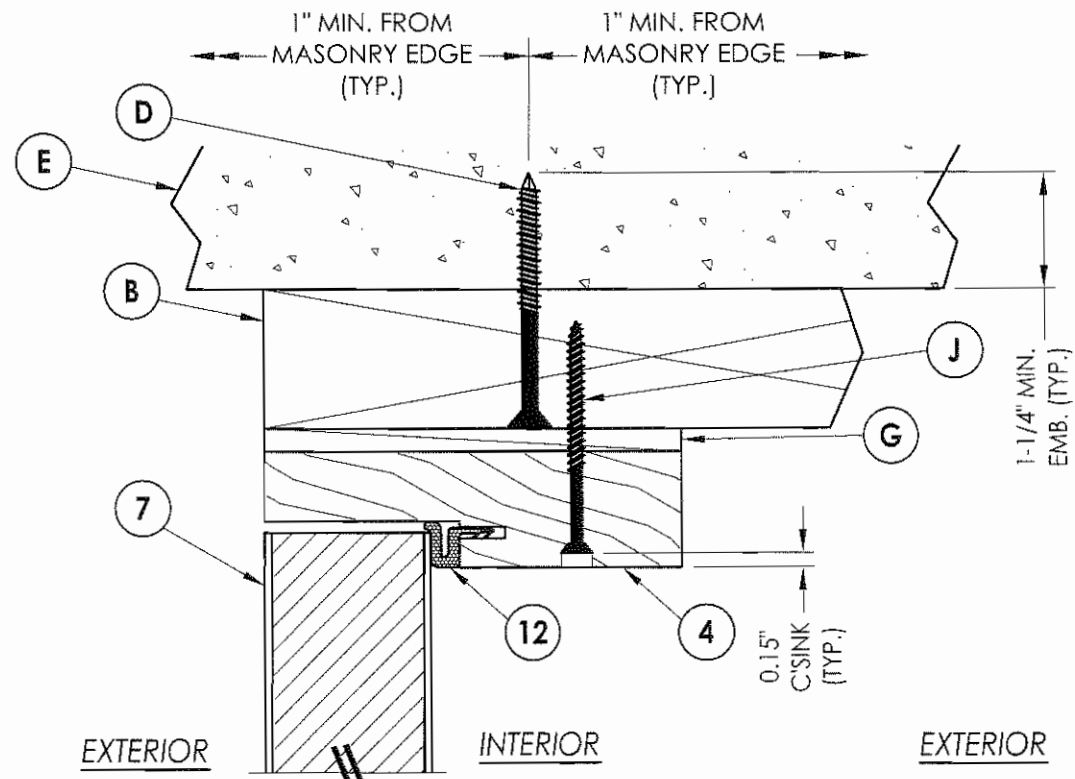




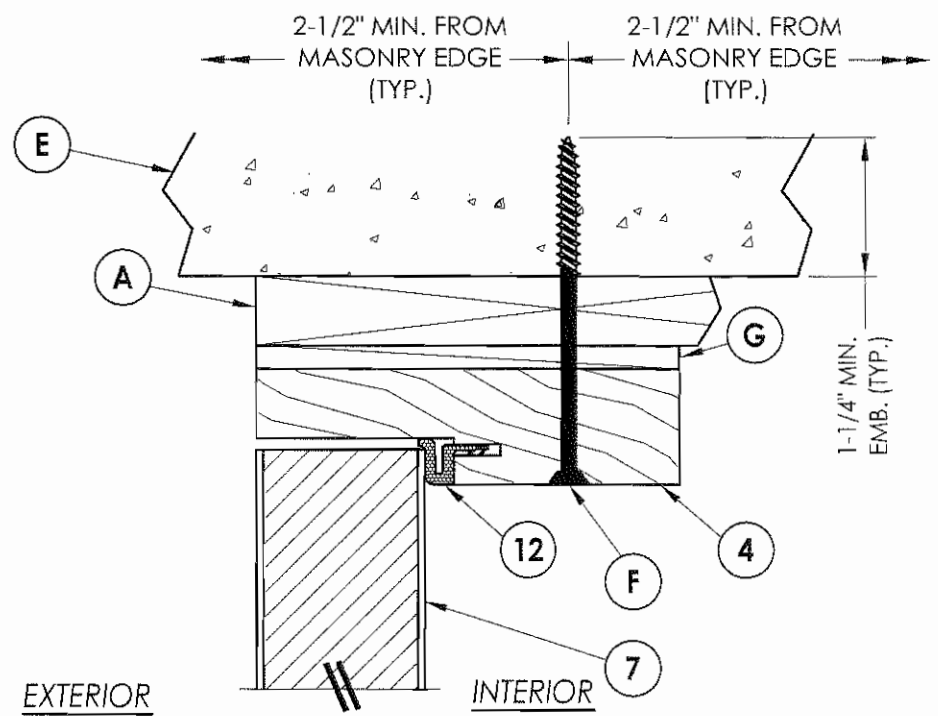




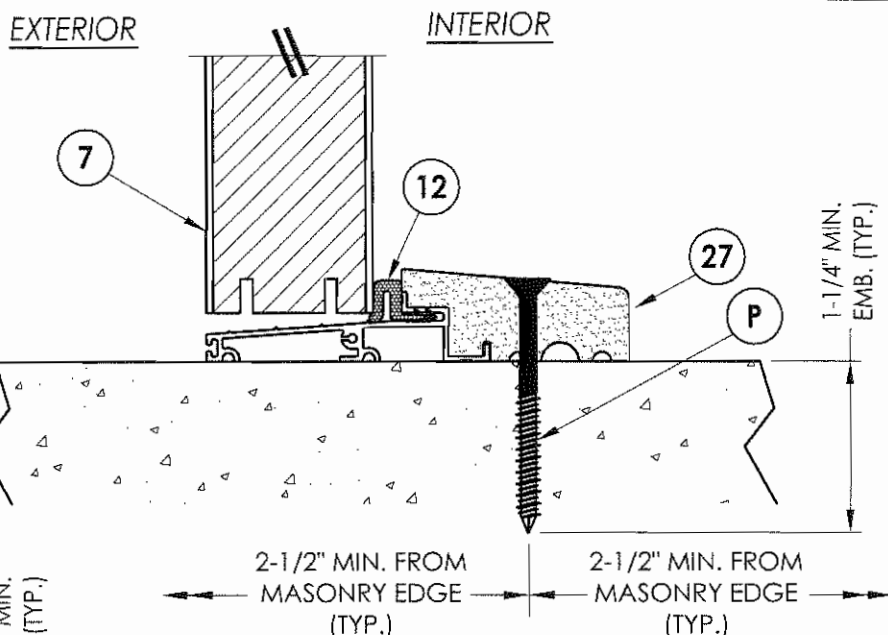
R:\A - Projects\Project Folders\Proj 1101 - 1200\pf1122\D. RWBC Drawings\FL-11165\FL-11165.8-14.dwg, Model



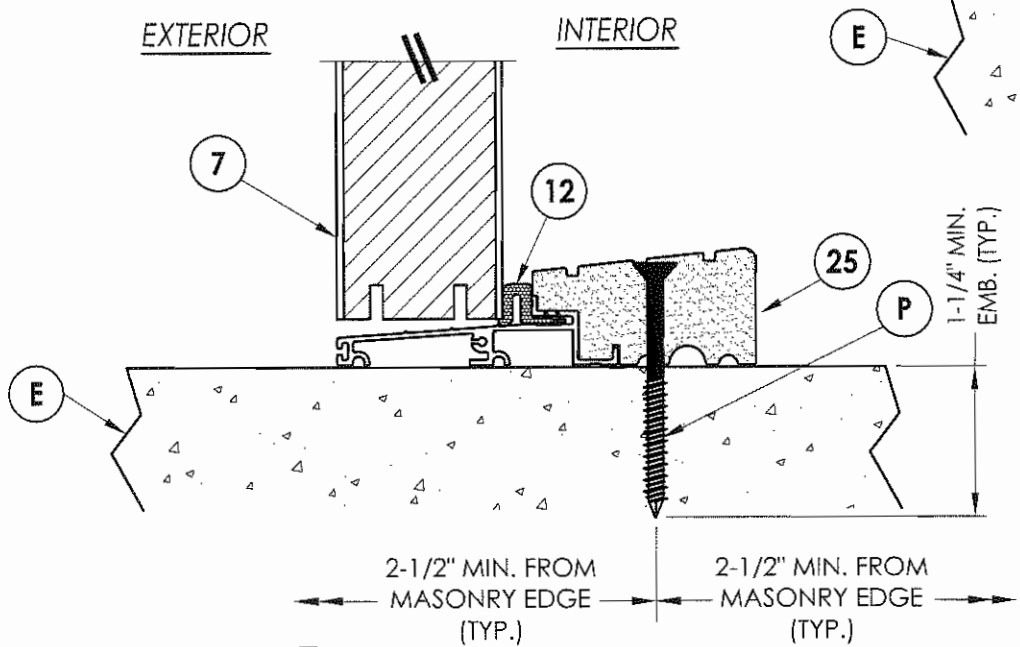
**1 VERTICAL CROSS SECTION**  
**4** Outswing shown  
 Inswing also approved



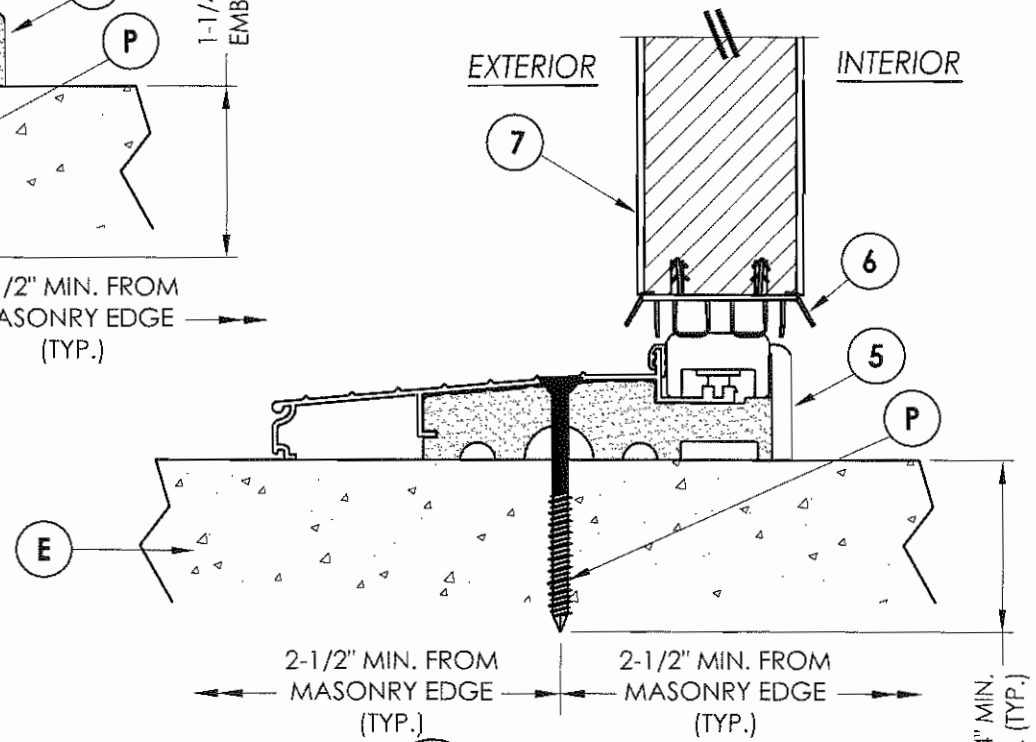
**2 VERTICAL CROSS SECTION**  
**4** Shown w/1X sub-buck substituting  
 concrete screws for wood screws per  
 Section 1714.4.4.2 of the FBC



**4 VERTICAL CROSS SECTION**  
**4** Outswing configuration  
 see general notes, sheet 1  
 for "HVHZ" water infiltration  
 requirements



**3 VERTICAL CROSS SECTION**  
**4** Outswing configuration  
 see general notes, sheet 1  
 for "HVHZ" water infiltration  
 requirements



**5 VERTICAL CROSS SECTION**  
**4** inswing configuration  
 see general notes, sheet 1  
 for "HVHZ" water infiltration  
 requirements

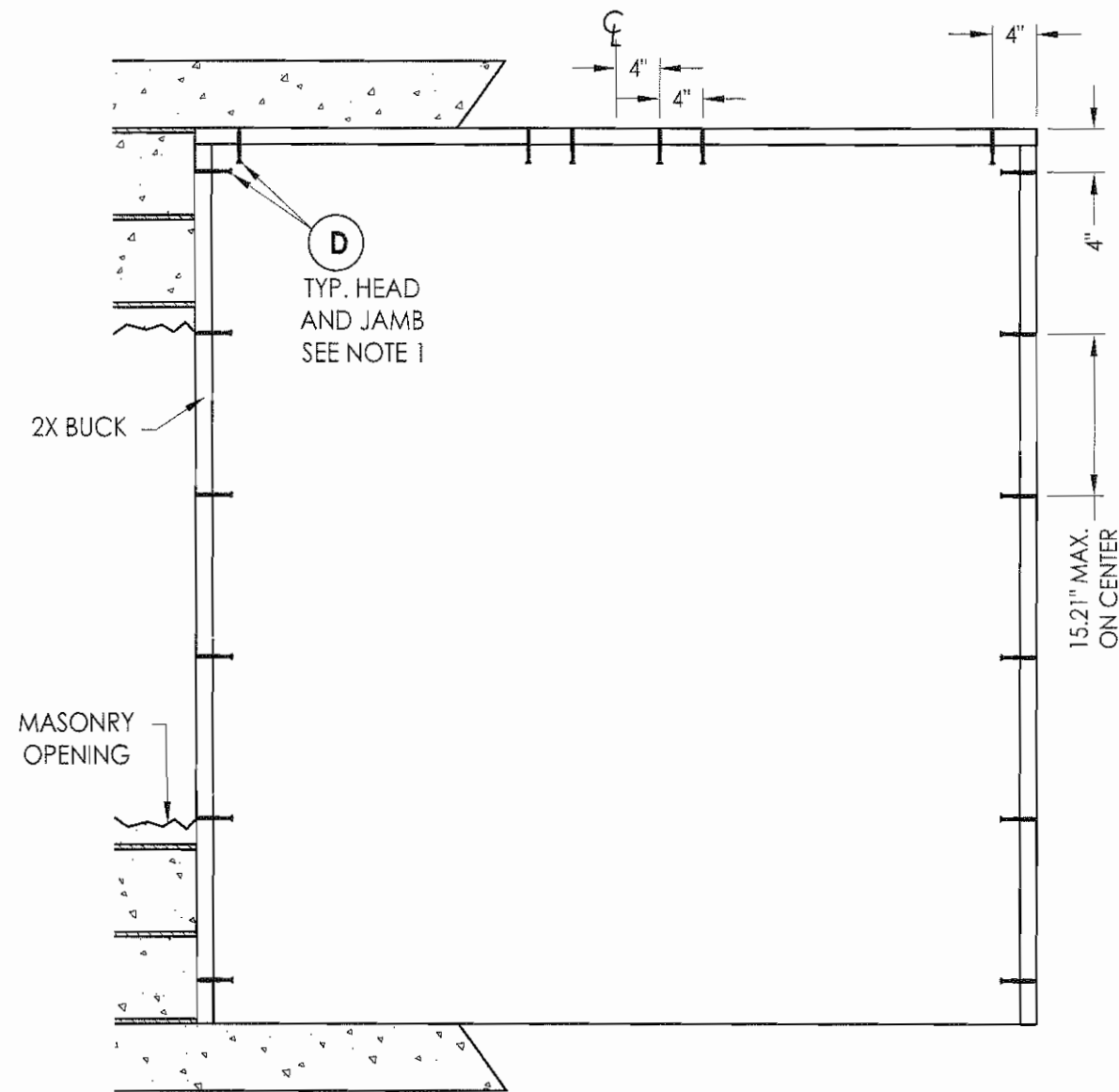
Documents Prepared By:  
**RW** BUILDING CONSULTANTS, INC.  
 P.O. Box 230 Valrico FL 33595  
 Phone No.: 813.659.9197  
 Florida Board of Professional Engineers  
 Certificate Of Authorization No. 9813  
*Wendell W. Honey* B-1-08  
 Wendell W. Honey, P.E. No. 54158

PRODUCT: TRINITY GLASS INT'L PREMIUM OPAQUE FIBERGLASS  
 PART OR ASSEMBLY: VERTICAL CROSS SECTIONS

NO.	DATE	BY	REVISIONS

DATE: 5/15/08  
 SCALE: N.T.S.  
 DWG. BY: YV  
 CHK. BY: WWH  
 DRAWING NO.: FL-11165.13  
 SHEET 4 OF 12

© 2008 R.W. BUILDING CONSULTANTS INC.



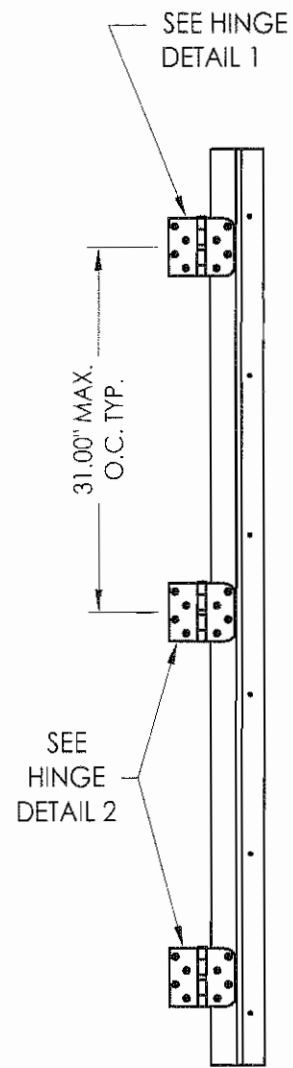
**BUCK ANCHORING**

**NOTES:**

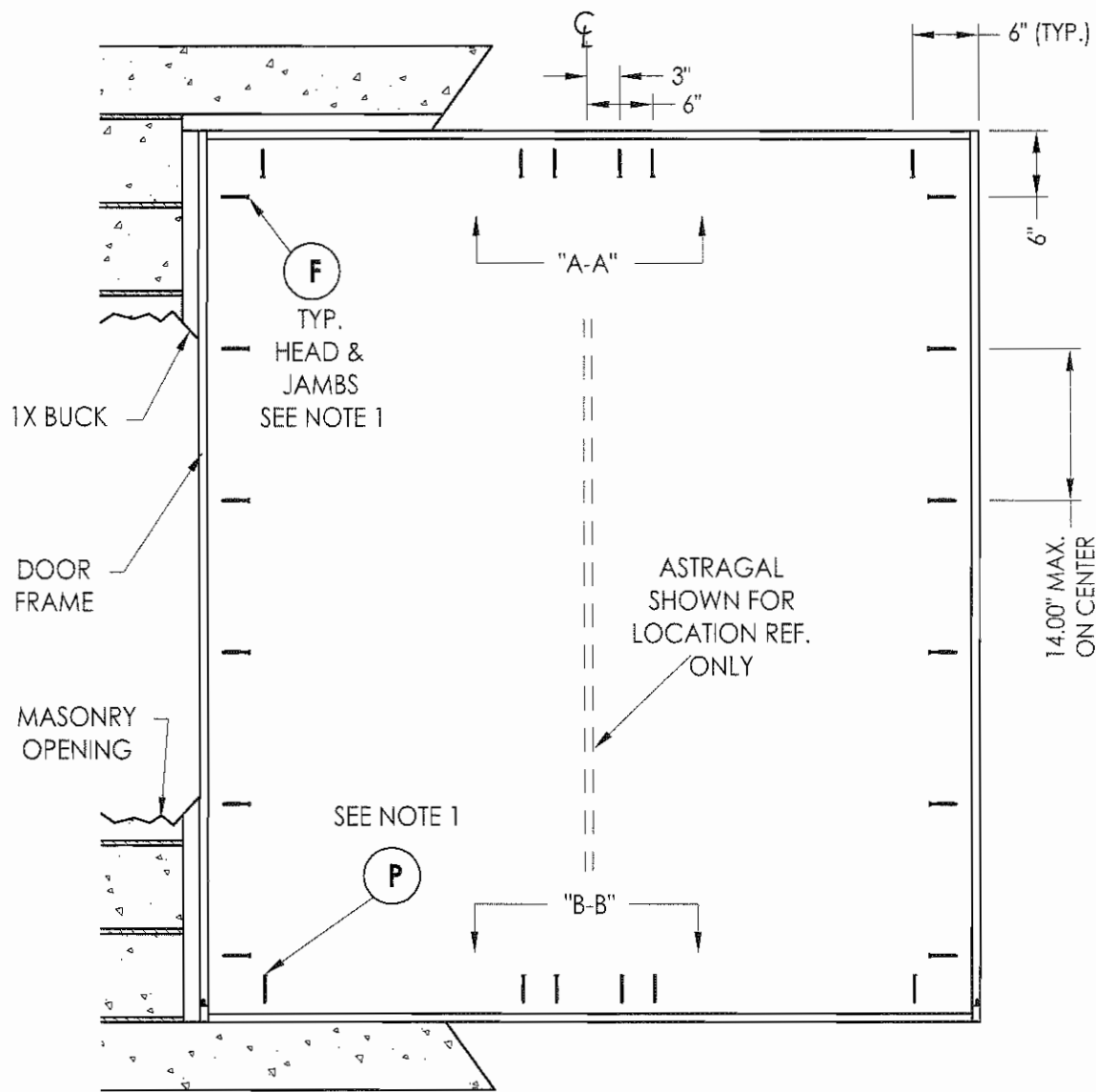
1. 1/4" Elco Concrete screws anchoring 2x buck require a minimum 1" clearance to masonry edges, a 1-1/4" minimum embedment and a minimum 4" clearance to adjacent concrete screws. Substitution of equal concrete screws from a different supplier may have different edge distance and center distance requirements. Concrete screw locations at the corners and astragal may be adjusted to maintain the minimum edge distance to mortar joints. If concrete screw locations noted as "MAX. ON CENTER" must be adjusted to maintain the minimum edge distance to mortar joints, additional concrete screws may be required to ensure the maximum on center dimension is not exceeded.

Documents Prepared By: <b>RW</b> BUILDING CONSULTANTS, INC. P.O. Box 230 Valrico FL 33595 Phone No.: 813.659.9197 Florida Board of Professional Engineers Certificate Of Authorization No. 9813 <i>Wendell W. Wagner</i> 8-1-08 Wendell W. Wagner, P.E. No. 54158		
PRODUCT: TRINITY GLASS INT'L PREMIUM OPAQUE FIBERGLASS	PART OR ASSEMBLY: BUCK ANCHORING	
NO.	DATE	BY
REVISIONS		
DATE: 5/15/08		
SCALE: N.T.S.		
DWG. BY: YV		
CHK. BY: WWH		
DRAWING NO.: FL-11165.13		
SHEET 5 OF 12		

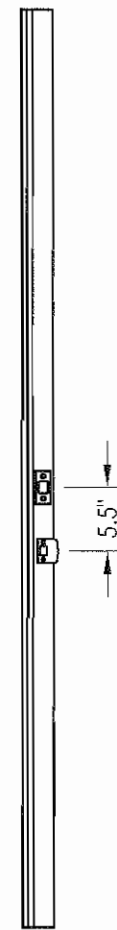




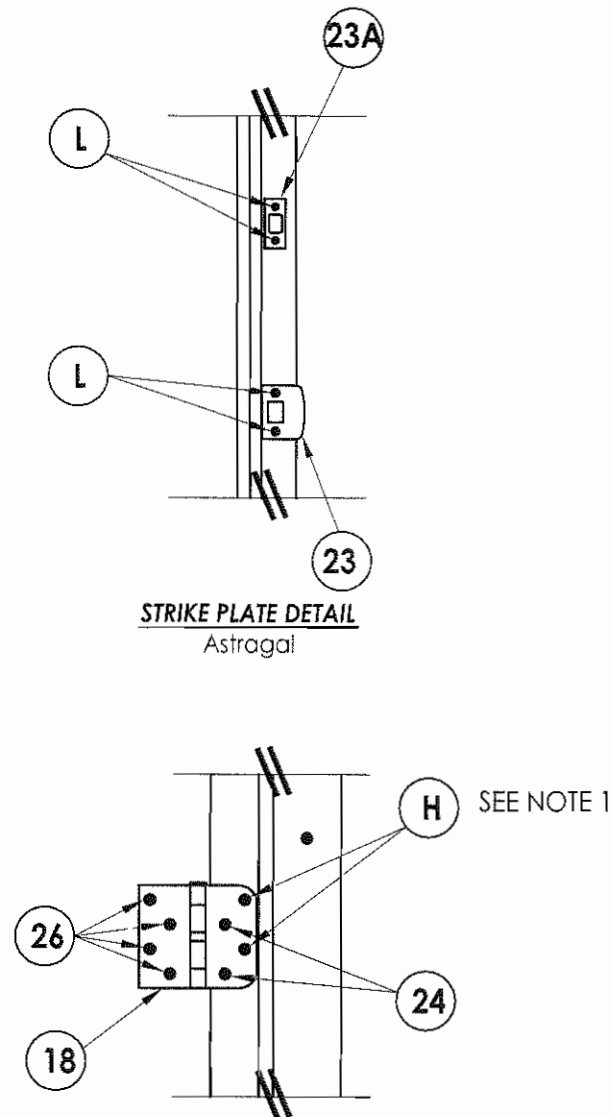
**HINGE JAMB**



**FRAME ANCHORING**  
Masonry 1X buck construction

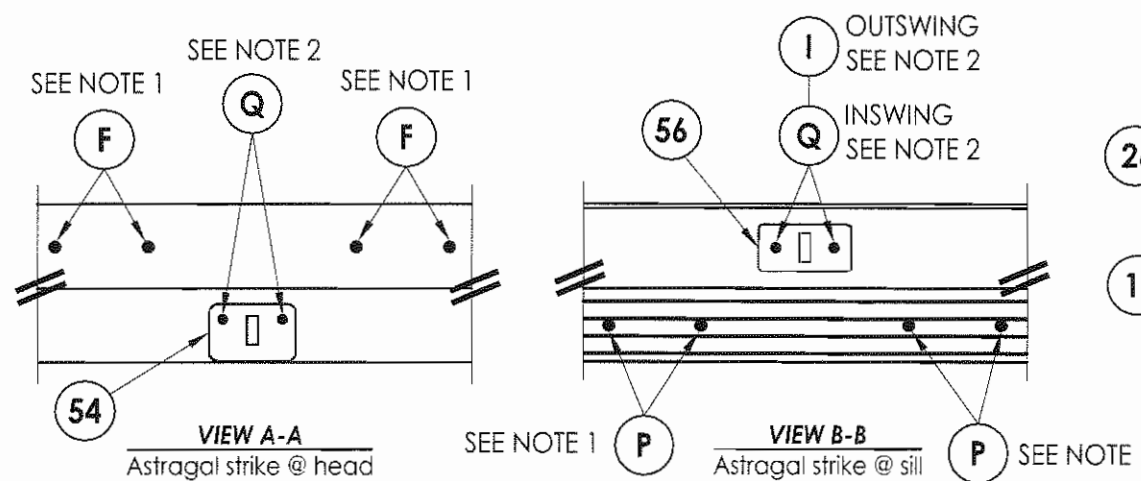


**ASTRAGAL STRIKE**



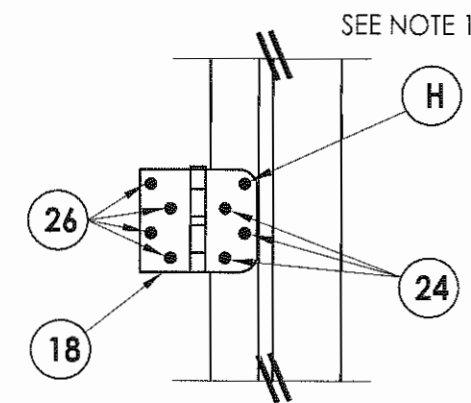
**STRIKE PLATE DETAIL**  
Astragal

**HINGE DETAIL 1**



**VIEW A-A**  
Astragal strike @ head

**VIEW B-B**  
Astragal strike @ sill



**HINGE DETAIL 2**

**NOTES:**

- 1/4" ITW concrete screws anchoring frame and/or sill require a minimum 2-1/2" clearance to masonry edges, a 1-1/4" minimum embedment and a minimum 3" clearance to adjacent concrete screws. Substitution of equal concrete screws from a different supplier may have different edge distance and center distance requirements. Concrete screw locations at the corners and at astragal locations may be adjusted to maintain the minimum edge distance to mortar joints. If concrete screw locations noted as "MAX. ON CENTER" must be adjusted to maintain the minimum edge distance to mortar joints, additional concrete screws may be required to ensure the maximum on center dimension is not exceeded.
- 3/16" ITW concrete screws anchoring frame and/or sill require a minimum 2-5/8" clearance to masonry edges, a 1-1/4" minimum embedment and a minimum 2-1/4" clearance to adjacent concrete screws unless otherwise noted by concrete screw manufacturer.

Documents Prepared By:  
**RW** BUILDING CONSULTANTS, INC.  
 P.O. Box 230 Valrico FL 33595  
 Phone No.: 813.659.9197  
 Florida Board of Professional Engineers  
 Certificate Of Authorization No. 9813  
*Wendell W. Hyatt, P.E.*  
 No. 54158

PRODUCT: TRINITY GLASS INT'L PREMIUM OPAQUE FIBERGLASS  
 PART OR ASSEMBLY: FRAME ANCHORING 1X BUCK MASONRY CONSTRUCTION

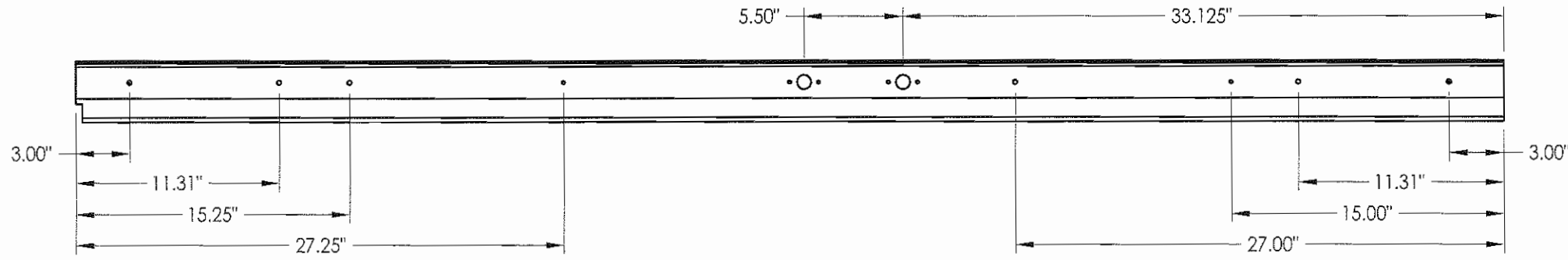
NO.	DATE	BY	REVISIONS

DATE: 5/15/08  
 SCALE: N.T.S.  
 DWG. BY: YV  
 CHK. BY: WWH  
 DRAWING NO.: FL-11165.13  
 SHEET 7 OF 12



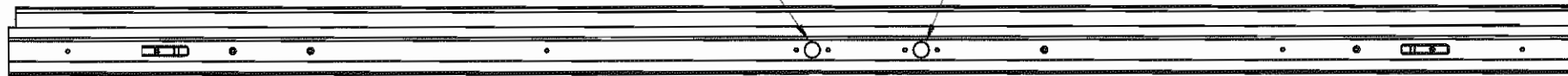


TOP



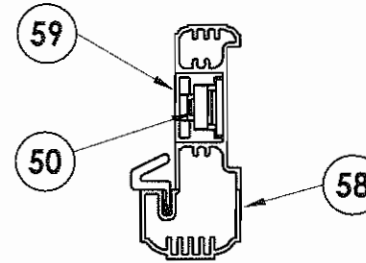
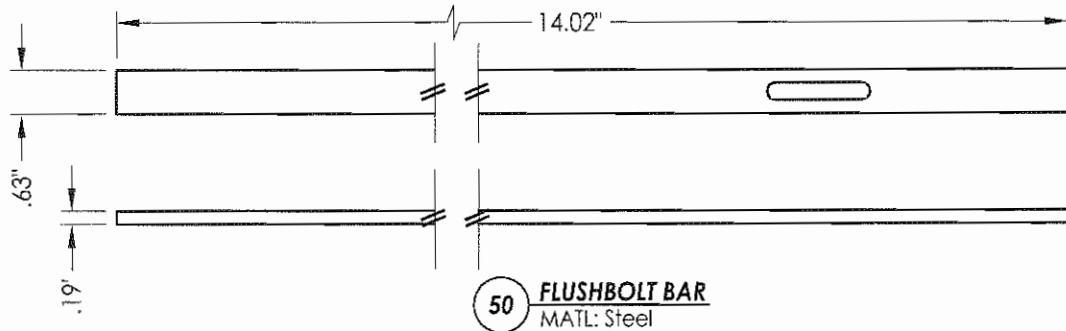
BOTTOM

DEAD BOLT (THRU HOLE) LATCH (THRU HOLE)

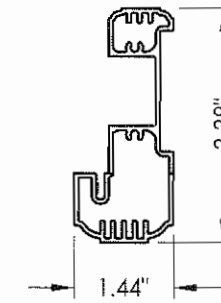


**6'8 ALUMINUM ASTRAGAL ASSEMBLY**  
By TRC

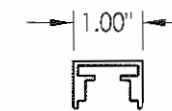
B-B



**VIEW B-B**  
Aluminum Astragal Assembly



**58 ALUMINUM ASTRAGAL**  
BY TRC



**59 ASTRAGAL CHANNEL**  
BY TRC

Documents Prepared By:

**RW** BUILDING CONSULTANTS, INC.  
P.O. Box 230 Vairico FL 33595  
Phone No.: 813.659.9197  
Florida Board of Professional Engineers  
Certificate Of Authorization No. 9813  
*Wendell W. Harey* B-1-08  
Wendell W. Harey, P.E. No. 54158

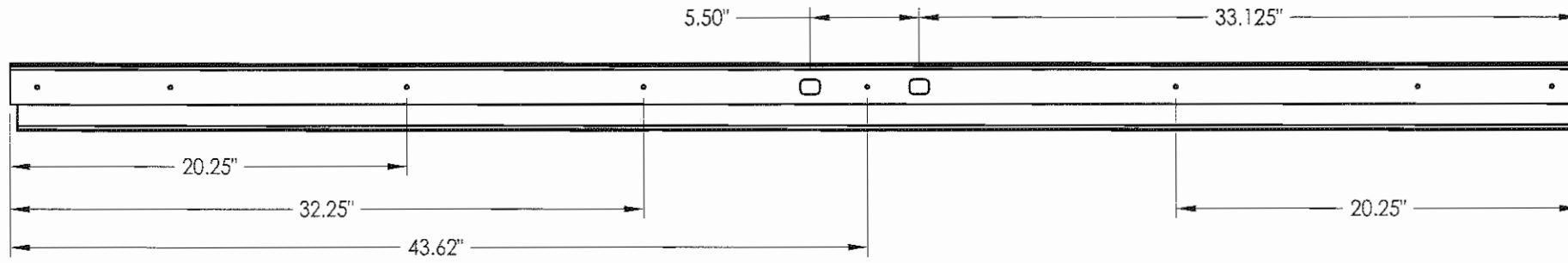
PRODUCT: TRINITY GLASS INT'L PREMIUM OPAQUE FIBERGLASS

PART OR ASSEMBLY: TRINITY ASTRAGAL DETAILS

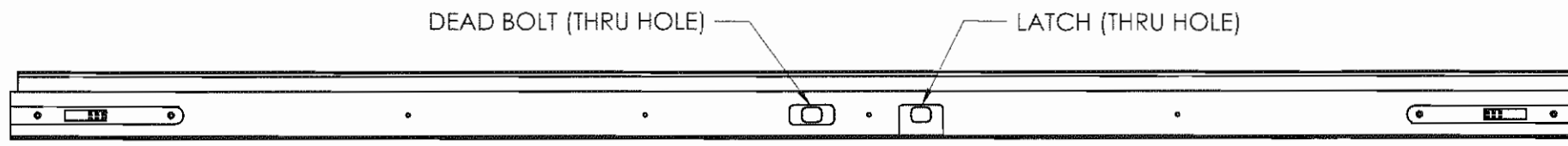
NO.	DATE	BY	REVISIONS

DATE: 5/15/08  
SCALE: N.T.S.  
DWG. BY: YV  
CHK. BY: WWH  
DRAWING NO.: FL-11165.13  
SHEET 10 OF 12

TOP

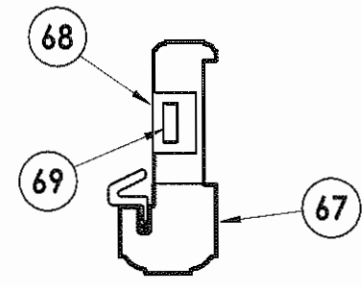


BOTTOM

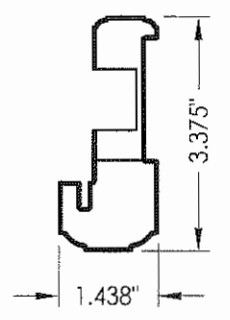


6'8 PVC ASTRAGAL ASSEMBLY  
By TRC

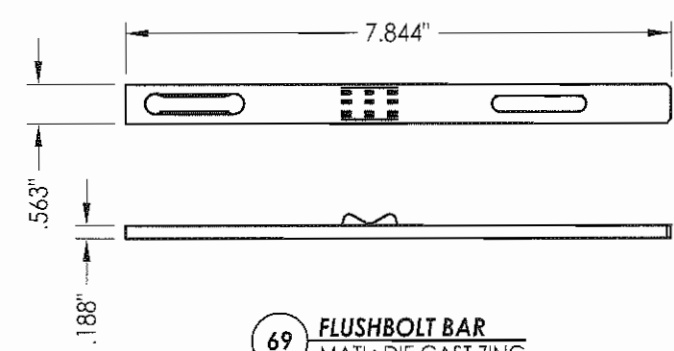
C-C



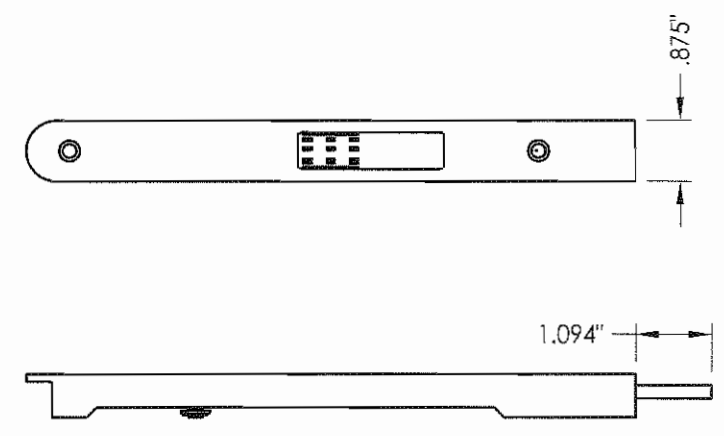
VIEW C-C  
PVC ASTRAGAL ASSEMBLY



67 PVC ASTRAGAL  
BY TRC



69 FLUSHBOLT BAR  
MATL: DIE CAST ZINC



68 FLUSHBOLT  
MATL: 8.75" DIE CAST ZINC

PRODUCT:  
TRINITY GLASS INT'L  
PREMIUM OPAQUE FIBERGLASS

PART OR ASSEMBLY:  
PVC ASTRAGAL DETAILS

NO.	DATE	BY	REVISIONS

DATE: 5/09/08  
 SCALE: N.T.S.  
 DWG. BY: YV  
 CHK. BY: WWH  
 DRAWING NO.: FL-11165.13  
 SHEET 11 OF 12

Documents Prepared By:  
**RW** BUILDING CONSULTANTS, INC.  
 P.O. Box 230 Valrico FL 33595  
 Phone No.: 813.659.9197  
 Florida Board of Professional Engineers  
 Certificate Of Authorization No. 9813  
*Wendell W. Hapley* B-1-08  
 Wendell W. Hapley P.E. No. 54158

BILL OF MATERIALS			BILL OF MATERIALS		
ITEM	DESCRIPTION	MATERIAL	ITEM	DESCRIPTION	MATERIAL
A	1X BUCK SG >= 0.55	WOOD	50	FLUSHBOLT BAR	STEEL
B	2X BUCK SG >= 0.55	WOOD	51	4-3/4" LENGTH TOP BOLT RETAINER	HDPE
D	1/4" X 2-3/4" ELCO PFH CONCRETE SCREW	STEEL	52	9-3/4" LENGTH TOP BOLT RETAINER	ALUMINUM
E	MASONRY - 3,192 PSI MIN. CONCRETE CONFORMING TO ACI 301 OR HOLLOW BLOCK CONFORMING TO ASTM C90	CONCRETE	53	#8 X 1-3/4" PFH SMS	STEEL
F	1/4" X 3-3/4" ITW PFH CONCRETE SCREW	STEEL	54	ASTRAGAL STRIKE @ HEAD	STEEL
G	MAX. 1/4" SHIM SPACE	WOOD	55	ASTRAGAL BY ENDURA PRODUCT	ALUMINUM
H	1/4" X 3-1/4" ITW PFH CONCRETE SCREW	STEEL	56	ASTRAGAL STRIKE @ SILL	STEEL
I	3/16" X 1-3/4" ITW PFH CONCRETE SCREW	STEEL	57	SLIDE BOLT ROD	STEEL
J	#10 X 2-1/2" PFH WS	STEEL	58	ASTRAGAL BY TRC	ALUMINUM
K	#9 X 2" PFH WS	STEEL	59	ASTRAGAL CHANNEL BY TRC	ALUMINUM
L	#8 X 2-1/2" PFH WS	STEEL	67	PVC ASTRAGAL BY TRC	PVC
P	1/4" X 2-3/4" ITW PFH CONCRETE SCREW	STEEL	68	ASTRAGAL CHANNEL BY TRC	DIE CAST ZINC
Q	3/16" X 3-1/4" ITW CONCRETE SCREW	STEEL	69	#8 X 2" PFH SCREW	DIE CAST ZINC
3	HINGE JAMB - FINGER-JOINT PINE - SG >= 0.42	WOOD			
4	HEAD - FINGER-JOINT PINE - SG >= 0.42	WOOD			
5	IN SWING THRESHOLD ALUMINUM W/ COMPOSITE SUBSTRATE	ALUMINUM			
6	DOOR BOTTOM SWEEP	PVC			
7	DOOR PANEL - SEE DOOR PANEL DETAIL SHEET FOR CONSTRUCTION DETAILS	-			
8	#6 X 1-1/4" PFH DRYWALL SCREW	STEEL			
12	WEATHER STRIP QEBD650 Q-LON	-			
18	3.983" X 4.0" HINGE MIN 0.098" THICK	STEEL			
19	SILLKEY	PC/ASA			
21	KWIKSET LOCK -SERIES 200 PASSAGE	STEEL			
22	KWIKSET DEADBOLT -SERIES 600	STEEL			
23	STRIKE PLATE	STEEL			
23A	DEADBOLT PLATE	STEEL			
24	#9 X 5/8" PFH SCREW	STEEL			
25	OUTSWING HIGH-DAM THRESHOLD ALUMINUM W/ COMPOSITE SUBSTRATE	ALUM./ COMP.			
26	#9 X 1" PFH SCREW	STEEL			
27	OUTSWING THRESHOLD ALUMINUM W/ COMPOSITE SUBSTRATE	ALUM./ COMP.			
30	LATCH STILE - SG >= 0.42	LVL/PVC			
31	LVL LOCK BLOCK	POPLAR			
32	HINGE STILE - SG >= 0.42	LVL/PVC			
33	TOP RAIL - POPLAR LVL & WPC COMBINATION	POPLAR/WPC			
34	BOTTOM RAIL - POPLAR LVL & WPC COMBINATION	POPLAR/WPC			
39	FIBERGLASS SKIN 0.079" MIN. THICKNESS (Fy = 5,203 PSI MIN.)	FIBERGLASS			
46	FOAM CORE	POLYURETHANE			

Documents Prepared By:  
**RW** BUILDING CONSULTANTS, INC.  
P.O. Box 230 Valrico FL 33595  
Phone No.: 813.659.9197  
Florida Board of Professional Engineers  
Certificate of Authorization No. 9813  
*Wendell W. Wiley* 5-1-08  
Wendell W. Wiley, P.E. No. 54158

PRODUCT:  
TRINITY GLASS INT'L  
PREMIUM OPAQUE FIBERGLASS  
PART OR ASSEMBLY:  
BILL OF MATERIALS

NO.	DATE	BY	REVISIONS

DATE: 5/15/08  
SCALE: N.T.S.  
DWG. BY: YV  
CHK. BY: WWH  
DRAWING NO.:  
FL-11165.13  
SHEET 12 OF 12

R.W. BUILDING CONSULTANTS INC. 1101 14TH ST. N. W. WASHINGTON, DC 20004